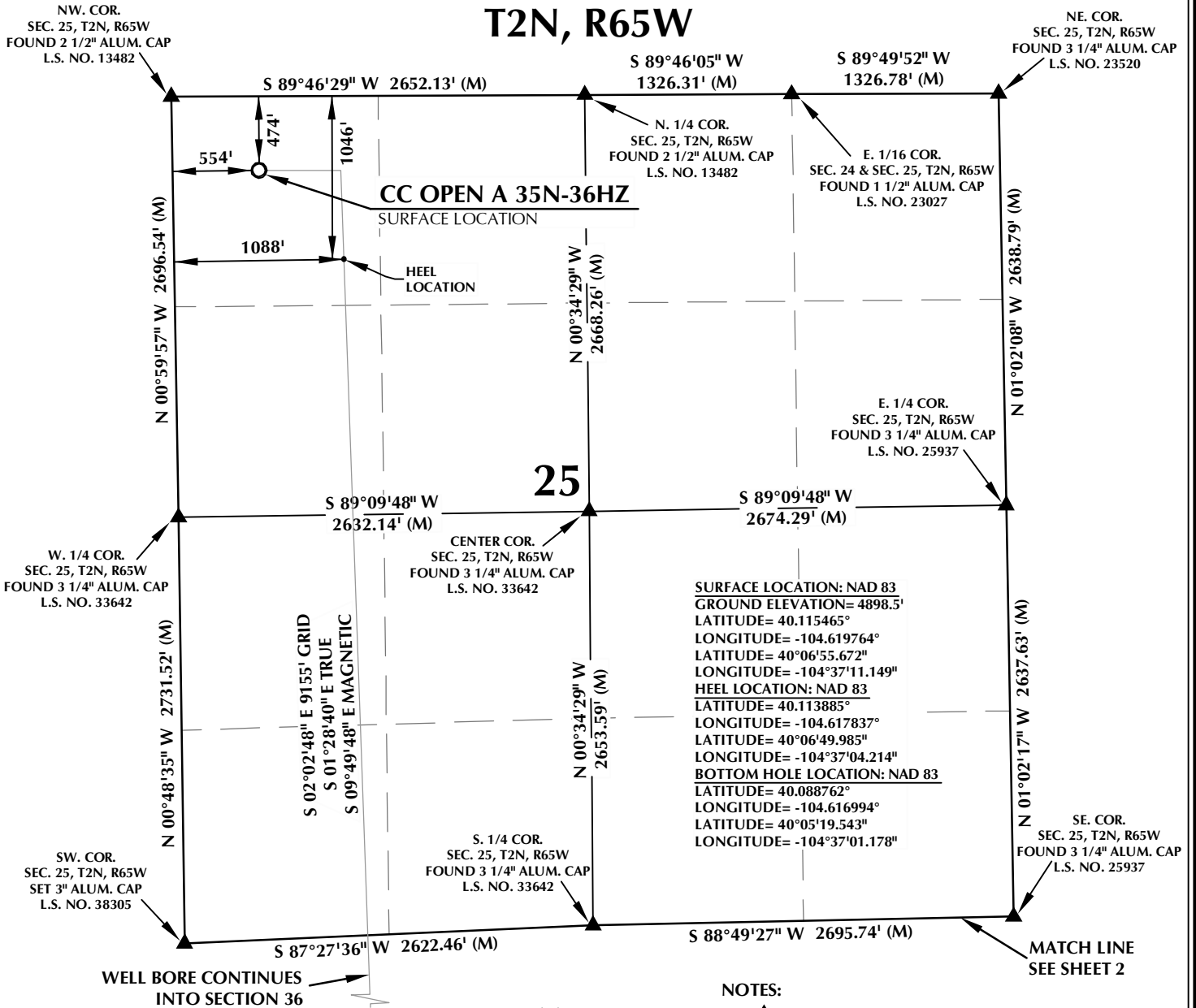
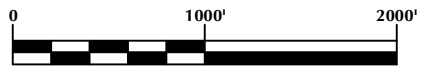


T2N, R65W



NOTES:

- ▲ INDICATES FOUND SECTION CORNER
- INDICATES CALCULATED CORNER
- ELEVATION BASED ON NAVD88 (GEOID09)
- BASIS OF BEARING DERIVED FROM COLORADO COORDINATE SYSTEM 1983 NORTH ZONE UNLESS OTHERWISE NOTED.
- ALL MEASURED DISTANCES ARE GRID.
COMBINED SCALE FACTOR: .99972280
- OPERATOR: ROB WILSON / PDOP = 1.3
- SEE ADDENDUM TO WELL LOCATION CERTIFICATE FOR EXISTING IMPROVEMENTS WITHIN 500' OF THE WELL PAD.
- WELL FOOTAGES ARE MEASURED AT RIGHT ANGLES TO THE SECTION LINES.
- THE BOTTOM OF HOLE BEARS S02°02'48" E 9155' FROM THE HEEL LOCATION.



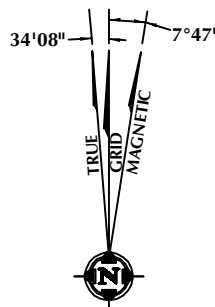
CERTIFICATE OF SURVEYOR:

THIS IS TO CERTIFY THAT THE ABOVE PLAT WAS PREPARED FROM FIELD NOTES OF ACTUAL SURVEY MADE BY ME OR UNDER MY SUPERVISION AND THAT THE SAME ARE TRUE AND CORRECT TO THE BEST OF MY KNOWLEDGE AND BELIEF. THIS CERTIFICATE DOES NOT REPRESENT A LAND SURVEY PLAT OR IMPROVEMENT SURVEY PLAT AS DEFINED BY C.S. 38-51-102 AND CANNOT BE RELIED UPON TO DETERMINE OWNERSHIP.

Benjamin J. Reenders
PROFESSIONAL LAND SURVEYOR
38305

BENJAMIN J. REENDERS
PROFESSIONAL LAND SURVEYOR
COLORADO REGISTRATION NUMBER 183305

NOTICE:
ACCORDING TO COLORADO STATE LAW YOU MUST COMMENCE ANY LEGAL ACTION BASED UPON ANY DEFECT IN THIS SURVEY WITHIN THREE YEARS AFTER YOU FIRST DISCOVER SUCH DEFECT. IN NO EVENT MAY ANY ACTION BASED UPON ANY DEFECT IN THIS SURVEY BE COMMENCED MORE THAN TEN YEARS FROM THE DATE ON THE CERTIFICATION SHOWN HEREON.



NOTE:
MAGNETIC NORTH IS CURRENT AS OF 1/27/2015.
MAGNETIC NORTH CHANGES WEST 0°06' PER YEAR.

WELL PAD - CC OPEN A 13C-36HZ

CC OPEN A 35N-36HZ
WELL LOCATION CERTIFICATE
474' FNL & 554' FWL NWNW (SURFACE)
1046' FNL & 1088' FWL NWNW (HEEL)
LOCATED IN SECTION 25
461' FSL & 1254' FWL SWSW (BOTTOM)
LOCATED IN SECTION 36
T2N, R65W, 6TH P.M.
WELD COUNTY, COLORADO

Kerr-McGee Oil & Gas Onshore L.P.
1099 18th Street
Denver, Colorado 80202



CONSULTING, LLC

SHERIDAN OFFICE
1095 Saberton Avenue
Sheridan, Wyoming 82801
Phone 307-674-0609

LOVELAND OFFICE
1635 Foxtrail Drive, Suite 204
Loveland, Colorado 80538
Phone 970-776-4331

DRAFTED BY:	LMO	CHECKED BY:	BJR	SHEET NO:
DATE DRAFTED:	1/30/15	DATE SURVEYED:	1/24/15	1
REVISED:	5/7/15	FILE NAME:	14-73	1 OF 2

T2N, R65W

N. 1/4 COR.
SEC. 36, T2N, R65W
FOUND 3 1/4" ALUM. CAP
L.S. NO. 33642
S 88°49'27" W 2695.74' (M)

MATCH LINE
SEE SHEET 1

NW. COR.
SEC. 36, T2N, R65W
SET 3" ALUM. CAP
L.S. NO. 38305

NE. COR.
SEC. 36, T2N, R65W
FOUND 3 1/4" ALUM. CAP
L.S. NO. 25937

SURFACE LOCATION: NAD 83
GROUND ELEVATION= 4898.5'
LATITUDE= 40.115465°
LONGITUDE= -104.619764°
LATITUDE= 40°06'55.672"
LONGITUDE= -104°37'11.149"
HEEL LOCATION: NAD 83
LATITUDE= 40.113885°
LONGITUDE= -104.617837°
LATITUDE= 40°06'49.985"
LONGITUDE= -104°37'04.214"
BOTTOM HOLE LOCATION: NAD 83
LATITUDE= 40.088762°
LONGITUDE= -104.616994°
LATITUDE= 40°05'19.543"
LONGITUDE= -104°37'01.178"

S 87°27'36" W 2622.46' (M)

N 01°07'50" W 2601.68' (M)

S 02°02'48" E 9155' GRID
S 01°28'40" E TRUE
S 09°49'48" E MAGNETIC

N 01°11'03" W
2677.88' (C)

N 00°29'19" W 2692.04' (M)

36

S 89°07'28" W
2624.19' (C)

S 89°07'28" W
2663.10' (C)

W. 1/4 COR.
SEC. 36, T2N, R65W
FOUND 3 1/4" ALUM. CAP
L.S. NO. 37890

E. 1/4 COR.
SEC. 36, T2N, R65W
FOUND 3 1/4" ALUM. CAP
L.S. NO. 23027

N 01°06'43" W 2626.63' (M)

N 00°26'02" W 2692.74' (M)

2181'

BOTTOM OF HOLE:
461' FSL & 1254' FWL

1254'

1373'

59'

S. 1/4 COR.
SEC. 36, T2N, R65W
FOUND 2 1/2" ALUM. CAP
L.S. NO. 38345

S 89°50'38" W 2627.89' (M)

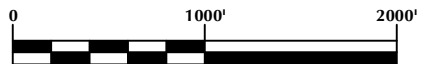
S 89°50'43" W 2628.22' (M)

SW. COR.
SEC. 36, T2N, R65W
FOUND 3 1/4" ALUM. CAP
L.S. NO. 37890

SE. COR.
SEC. 36, T2N, R65W
FOUND 2" ALUM. CAP
L.S. NO. 25937

NOTES:

- ▲ INDICATES FOUND SECTION CORNER
- INDICATES CALCULATED CORNER
- ELEVATION BASED ON NAVD88 (GEOID09)
- BASIS OF BEARING DERIVED FROM COLORADO COORDINATE SYSTEM 1983 NORTH ZONE UNLESS OTHERWISE NOTED.
- ALL MEASURED DISTANCES ARE GRID.
COMBINED SCALE FACTOR: .99972280
- OPERATOR: ROB WILSON / PDOP = 1.3
- SEE ADDENDUM TO WELL LOCATION CERTIFICATE FOR EXISTING IMPROVEMENTS WITHIN 500' OF THE WELL PAD.
- WELL FOOTAGES ARE MEASURED AT RIGHT ANGLES TO THE SECTION LINES.
- THE BOTTOM OF HOLE BEARS S02°02'48" E 9155' FROM THE HEEL LOCATION.



SCALE: 1" = 1000'

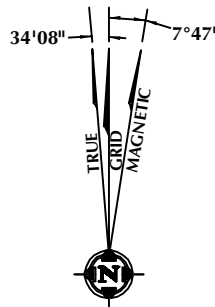
CERTIFICATE OF SURVEYOR:

THIS IS TO CERTIFY THAT THE ABOVE PLAT WAS PREPARED FROM FIELD NOTES OF ACTUAL SURVEY MADE BY ME OR UNDER MY SUPERVISION AND THAT THE SAME ARE TRUE AND CORRECT TO THE BEST OF MY KNOWLEDGE AND BELIEF. THIS CERTIFICATE DOES NOT REPRESENT A LAND SURVEY PLAT OR IMPROVEMENT SURVEY PLAT AS DEFINED BY C.S. 38-51-102 AND CANNOT BE RELIED UPON TO DETERMINE OWNERSHIP.

Benjamin J. Reenders
PROFESSIONAL LAND SURVEYOR
38305

BENJAMIN J. REENDERS
PROFESSIONAL LAND SURVEYOR
COLORADO REGISTRATION NUMBER 13333

NOTICE:
ACCORDING TO COLORADO STATE LAW YOU MUST COMMENCE ANY LEGAL ACTION BASED UPON ANY DEFECT IN THIS SURVEY WITHIN THREE YEARS AFTER YOU FIRST DISCOVER SUCH DEFECT. IN NO EVENT MAY ANY ACTION BASED UPON ANY DEFECT IN THIS SURVEY BE COMMENCED MORE THAN TEN YEARS FROM THE DATE ON THE CERTIFICATION SHOWN HEREON.



NOTE:
MAGNETIC NORTH IS CURRENT AS OF 1/27/2015.
MAGNETIC NORTH CHANGES WEST 0°06' PER YEAR.

WELL PAD - CC OPEN A 13C-36HZ

CC OPEN A 35N-36HZ
WELL LOCATION CERTIFICATE
474' FNL & 554' FWL NWNW (SURFACE)
1046' FNL & 1088' FWL NWNW (HEEL)
LOCATED IN SECTION 25
461' FSL & 1254' FWL SWSW (BOTTOM)
LOCATED IN SECTION 36
T2N, R65W, 6TH P.M.
WELD COUNTY, COLORADO

**Kerr-McGee Oil &
Gas Onshore L.P.**
1099 18th Street
Denver, Colorado 80202



CONSULTING, LLC

SHERIDAN OFFICE
1095 Saberton Avenue
Sheridan, Wyoming 82801
Phone 307-674-0609

LOVELAND OFFICE
1635 Foxtrail Drive, Suite 204
Loveland, Colorado 80538
Phone 970-776-4331

DRAFTED BY:	LMO	CHECKED BY:	BJR	SHEET NO:
DATE DRAFTED:	1/30/15	DATE SURVEYED:	1/24/15	2
REVISED:	5/7/15	FILE NAME:	14-73	2 OF 2