

**STATE OF
COLORADO****Fischer - DNR, Alex <alex.fischer@state.co.us>**

RE: Updated maps for Encana-Caerus water share

1 message

Natalie Naeve <nnaeve@caerusoilandgas.com>

Thu, Sep 10, 2015 at 8:10 AM

To: "Fischer - DNR, Alex" <alex.fischer@state.co.us>, "JevinRobert.Croteau@encana.com" <JevinRobert.Croteau@encana.com>

Alex,

Attached is a map of the Middle Fork Water Facility, which is where the MDFK DAF water analysis came from. I do not have a map of the North Parachute Ranch location, nor can I confirm that the pond in the first attached map is the HIM Upper Pond North. However, from my understanding, both facilities referenced (Upper Pond North and North Parachute Ranch) gather to the Middle Fork Water Facility and are transported via Encana's existing 12" buried water line. In the sundries we have submitted, Appendix A references these facilities.

The second map is the entire route from Encana's Middle Fork Water Facility to the Mesa H2 pad.

Thanks,

Natalie

From: Fischer - DNR, Alex [mailto:alex.fischer@state.co.us]**Sent:** Thursday, September 10, 2015 7:29 AM**To:** Natalie Naeve <nnaeve@caerusoilandgas.com>; JevinRobert.Croteau@encana.com**Subject:** Re: Updated maps for Encana-Caerus water share

Natalie,

Thanks for the information last evening. Both Sundry's do not provide the Encana Facilities where the Fluids are coming from. Your email last evening provided Encana's HIM Upper Pond North (Facility ID 149013) and North Parachute Ranch Facility ID 120803.

- Are these the two Encana Facilities where the fluids will be coming from? If so, then a diagram illustrating these locations is needed. The diagram provided last evening showed the Encana/Caerus Transfer Point, WPX Starky Pit, and Mesa H2 Pad.

Both Sundry's provide the same analytical from the MDFK DAF which is not from the two facilities referenced above above.

- Please clarify?

Thanks

Alex

On Thu, Sep 10, 2015 at 2:41 AM, Natalie Naeve <nnaeve@caerusoilandgas.com> wrote:

Alex,

Per your request, attached is a summary of the operations proposed for the water share agreement between Encana and Caerus. I've also attached a map showing the Custody Transfer Point (located near the Caerus Yard) and the temporary 6" flexsteel line that will be used to transfer water to the pump operations at WPX's Starkey location. The pump that was designed for transferring water up WPX's existing 12" steel line will be used to move Encana water to the Mesa H2 pad. Water will enter the Mesa H2 pad via the riser installed at the location entrance and a temporary 12" poly line will complete the transfer to the tanks on location for storage during completion operations.

Again, I do apologize for the short notice on this revised plan for water. WPX and I had been working for months to create an optimal design for both parties, and within the last two weeks determined they did not have enough water to accommodate their own revised completion program and ours. The updated water share agreement with Encana has been worked through after extensive discussion and cooperation between all three companies – Caerus, WPX, and Encana. In summary, this is an Encana and Caerus water share, with WPX allowing use of their existing pipeline in order to facilitate the transfer. Please call me if you have any questions.

Thanks,

Natalie Naeve

Operations Engineer

Caerus Oil and Gas, LLC

600 17th Street, Suite 1600N

Denver, CO 80202

Cell: [720-505-6080](tel:720-505-6080)



Alex Fischer, P.G.

Environmental Supervisor, Western Colorado



COLORADO

**Oil & Gas Conservation
Commission**

Department of Natural Resources

P 303.894.2100 x5138 | F 303.894.2109

1120 Lincoln Street, Suite 801, Denver, CO 80203

| alex.fischer@state.co.us www.colorado.gov/cogcc

2 attachments



**Encana-Caerus Water Share - Encana origin to Caerus
destination.jpg**

389K

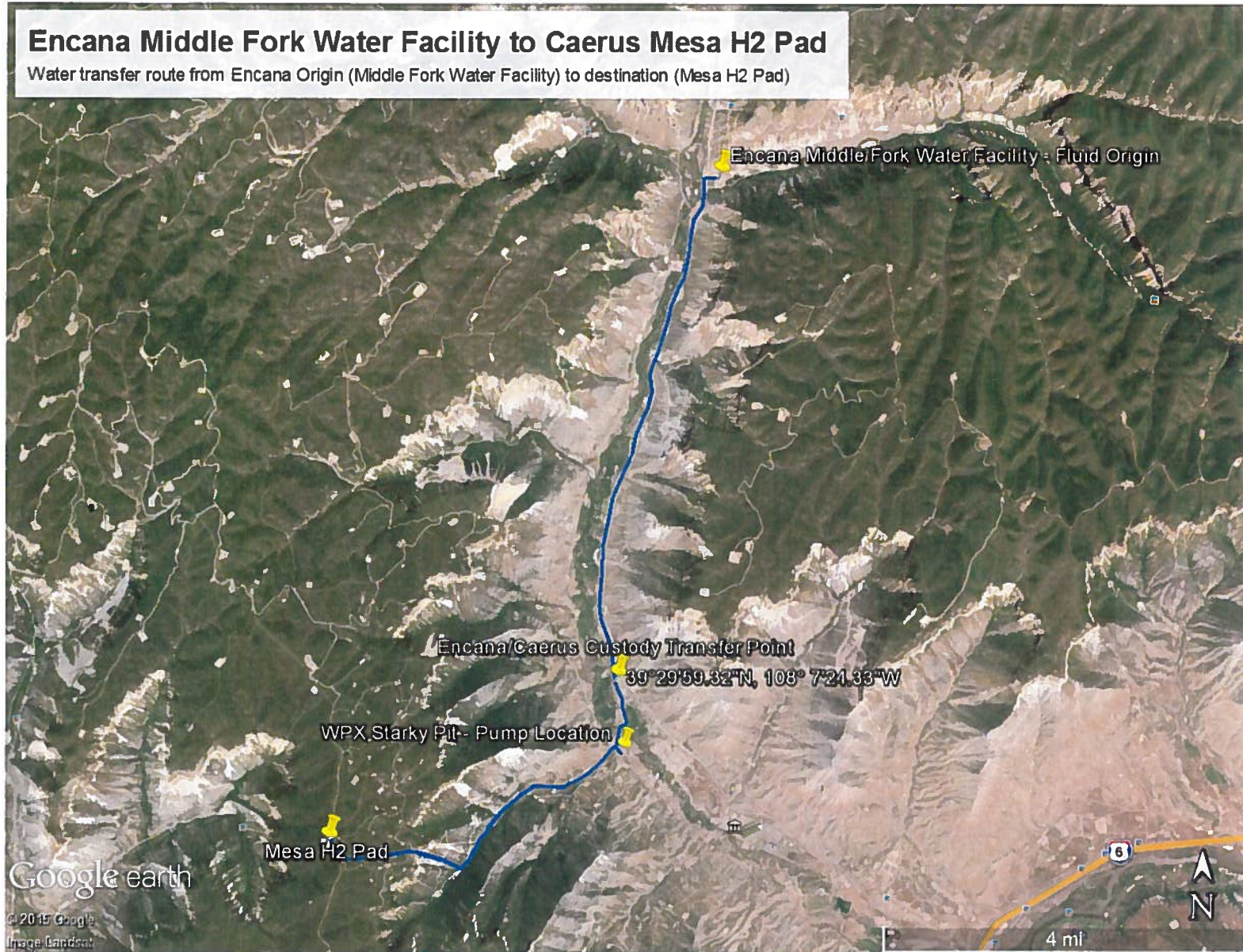


MiddleForkWaterDistribution_LGibson_20150909.pdf

316K

Encana Middle Fork Water Facility to Caerus Mesa H2 Pad

Water transfer route from Encana Origin (Middle Fork Water Facility) to destination (Mesa H2 Pad)



Middle Fork Water Facility *Origin

(Longitude: -108.1057, Latitude:39.5794)

Distance to Custody Transfer: 6.18 Miles

Basin 12" Water Line (Lined)

Basin 12" Water Line (Lined)

