



# Kerr-McGee Oil & Gas Onshore LP

A subsidiary of Anadarko Petroleum Corporation

1099 18<sup>th</sup> Street  
Denver, CO 80202  
720-929-6000

September 2, 2015

Matt Lepore  
Director, Colorado Oil and Gas Conservation Commission  
Department of Natural Resources  
The Chancery Building  
1120 Lincoln Street, Suite 801  
Denver, CO 80203

Re: **30 Day Certification Letter - 318A.e**  
CC OPEN A 13C-36HZ (Doc No. 400893565)  
Township 2 North, Range 65 West  
Section 25: NWNW  
Unit Acreage: 320 acres  
Unit Spacing: 02N65W SEC 25 W2W2  
02N65W SEC 36 W2W2  
Weld County, Colorado

Dear Director Lepore:

Kerr-McGee Oil and Gas Onshore LP ("KMG") hereby certifies that a thirty (30) day notice has been given by certified mail to all mineral owners in the proposed wellbore spacing unit. We have not received any objections to such well location, proposed spacing unit, or additional producing formation. KMG hereby respectfully requests approval of this boundary well.

If you have any questions or issues regarding this permit, please contact our office.

Sincerely,

**Kerr-McGee Oil and Gas Onshore LP**

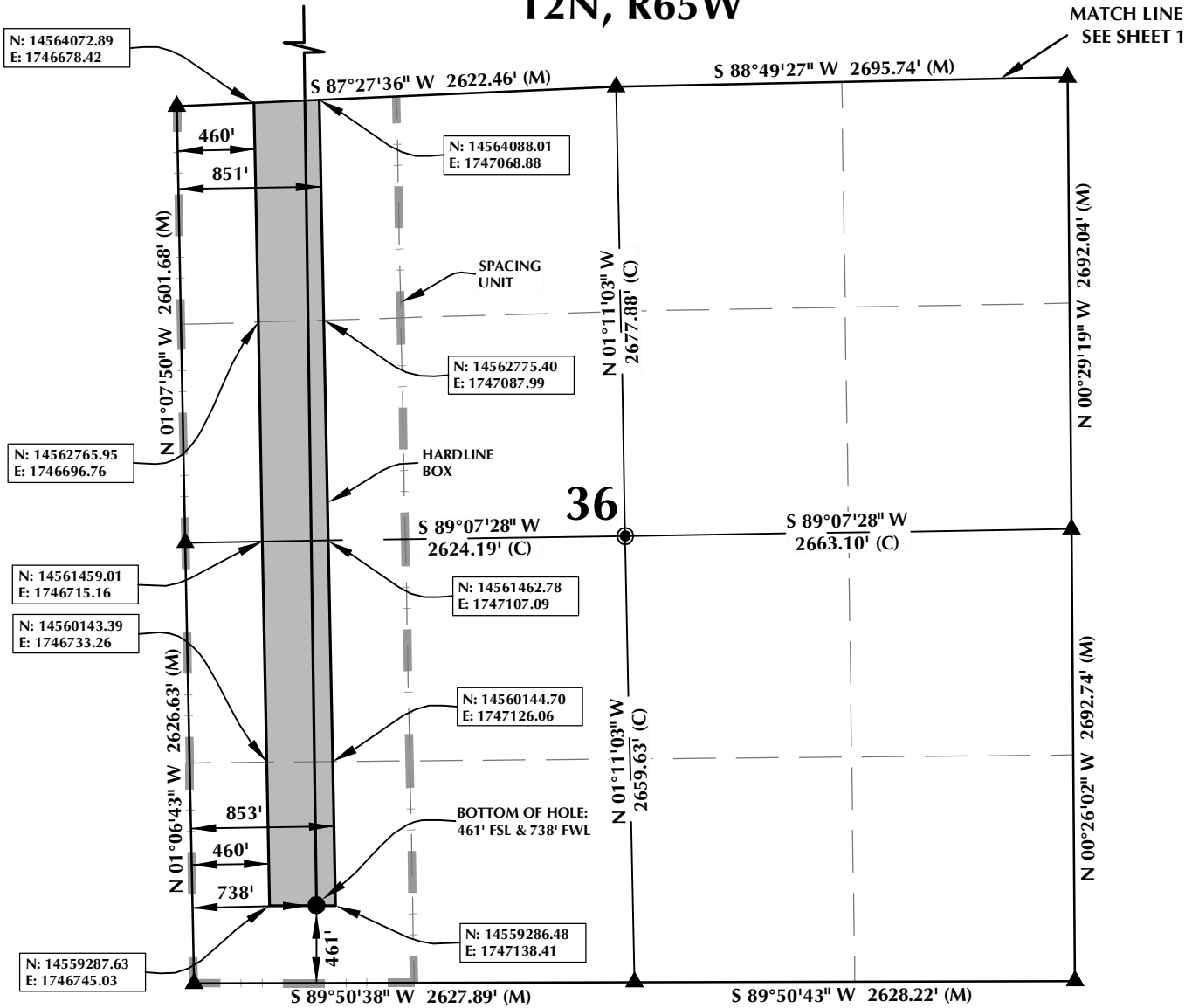
A handwritten signature in blue ink that reads 'R Powers'.

Ronett Powers  
Regulatory Analyst II

Enclosure



# SPACING UNIT: CC OPEN A 13C-36HZ T2N, R65W



### HEEL LOCATION

N: 14,568,438.02'  
E: 1,746,943.87'

LATITUDE= 40.113901°  
LONGITUDE= -104.618982°

LATITUDE= 40°06'50.043"  
LONGITUDE= -104°37'08.334"

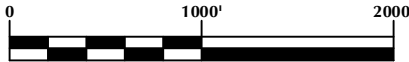
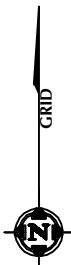
AVAILABLE FOOTAGE  
9736'

### BOTTOM HOLE LOCATION

N: 14,559,287.92'  
E: 1,747,023.22'

LATITUDE= 40.088773°  
LONGITUDE= -104.618838°

LATITUDE= 40°05'19.583"  
LONGITUDE= -104°37'07.817"



SCALE: 1" = 1000'

### NOTES:

- ▲ INDICATES FOUND SECTION CORNER
- INDICATES CALCULATED CORNER
- BASIS OF BEARING DERIVED FROM COLORADO COORDINATE SYSTEM 1983 NORTH ZONE UNLESS OTHERWISE NOTED.
- DRAWING NORTHING / EASTING COORDINATES ARE BASED ON COLORADO COORDINATE SYSTEM 1983 NORTH ZONE UNLESS OTHERWISE NOTED.
- COMBINED SCALE FACTOR: .99972880
- N / E COORDINATES ARE BASED ON UTM COORDINATE SYSTEM NAD83, ZONE 13
- THIS EXHIBIT DOES NOT REPRESENT A LAND SURVEY PLAT OR IMPROVEMENT SURVEY PLAT AS DEFINED BY C.R.S. 38-51-102 AND CANNOT BE RELIED UPON TO DETERMINE OWNERSHIP.

## WELL PAD - CC OPEN A 13C-36HZ

CC OPEN A 13C-36HZ  
SPACING UNIT EXHIBIT  
1042' FNL & 768' FWL NWNW (HEEL)  
LOCATED IN SECTION 25  
461' FSL & 738' FWL SWSW (BOTTOM)  
LOCATED IN SECTION 36  
T2N, R65W, 6TH P.M.  
WELD COUNTY, COLORADO

**Kerr-McGee Oil &  
Gas Onshore L.P.**  
1099 18th Street  
Denver, Colorado 80202



## CONSULTING, LLC

SHERIDAN OFFICE  
1095 Saberton Avenue  
Sheridan, Wyoming 82801  
Phone 307-674-0609

LOVELAND OFFICE  
1635 Foxtrail Drive, Suite 204  
Loveland, Colorado 80538  
Phone 970-776-4331

DRAFTED BY:	LMO	CHECKED BY:	BJR	SHEET NO:
DATE DRAFTED:	1/30/15	DATE SURVEYED:	1/24/15	2
REVISED:		FILE NAME:	14-73	2 OF 2