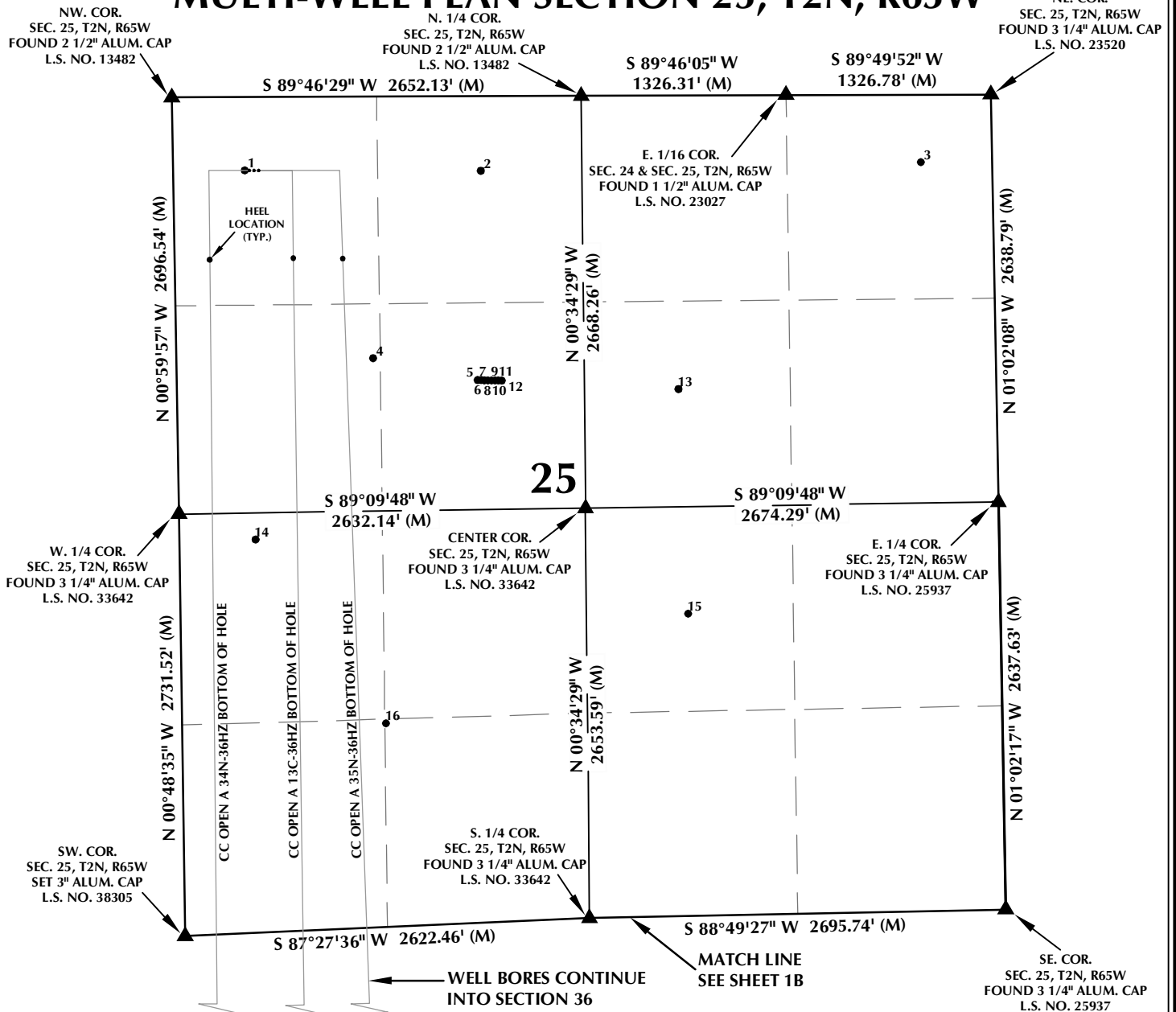


# MULTI-WELL PLAN SECTION 25, T2N, R65W



## WELL NOTES:

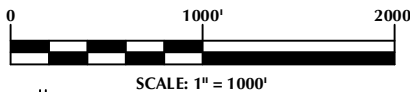
CC OPEN A 34N-36HZ  
SURFACE: 473' FNL, 494' FWL  
BOTTOM HOLE: 460' FSL, 158' FWL

CC OPEN A 13C-36HZ  
SURFACE: 474' FNL, 524' FWL  
BOTTOM HOLE: 461' FSL, 738' FWL

CC OPEN A 35N-36HZ  
SURFACE: 474' FNL, 554' FWL  
BOTTOM HOLE: 461' FSL, 1254' FWL

## NOTES:

- ▲ INDICATES FOUND SECTION CORNER
- INDICATES CALCULATED CORNER
- BASIS OF BEARING DERIVED FROM COLORADO COORDINATE SYSTEM 1983 NORTH ZONE UNLESS OTHERWISE NOTED.
- ALL MEASURED DISTANCES ARE GRID. COMBINED SCALE FACTOR: .99972880
- WELL FOOTAGES ARE MEASURED AT RIGHT ANGLES TO THE SECTION LINES.



## WELL PAD - CC OPEN A 13C-36HZ

MULTI-WELL PLAN  
CC OPEN A 34N-36HZ,  
CC OPEN A 13C-36HZ &  
CC OPEN A 35N-36HZ  
LOCATED IN SECTIONS 25 & 36  
T2N, R65W, 6TH P.M.  
WELD COUNTY, COLORADO

**Kerr-McGee Oil &  
Gas Onshore L.P.**

1099 18th Street  
Denver, Colorado 80202



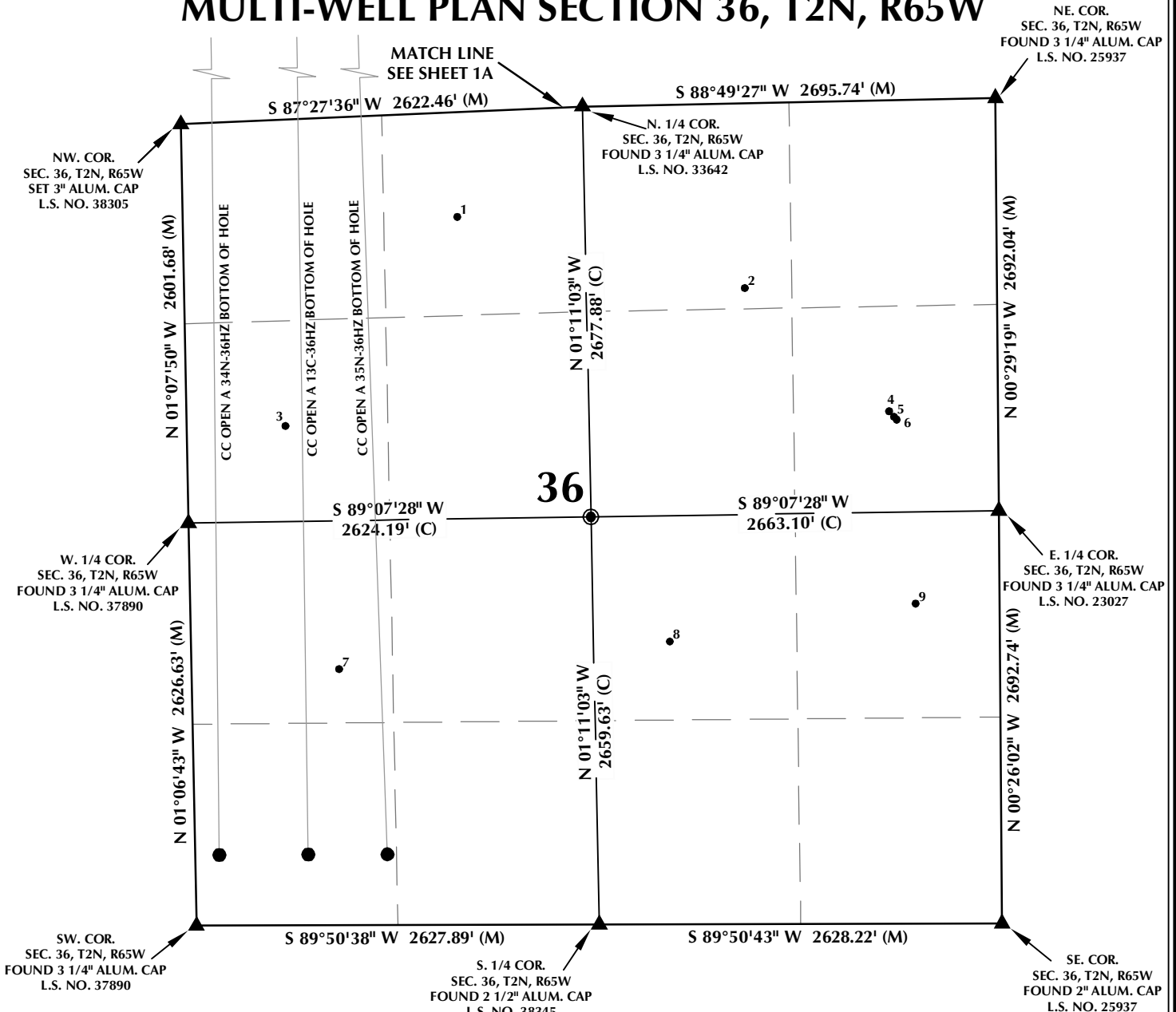
## CONSULTING, LLC

SHERIDAN OFFICE  
1095 Saberton Avenue  
Sheridan, Wyoming 82801  
Phone 307-674-0609

LOVELAND OFFICE  
1635 Foxtrail Drive, Suite 204  
Loveland, Colorado 80538  
Phone 970-776-4331

DRAFTED BY: LMO	CHECKED BY: BJR	SHEET NO: <b>1A</b> 1A OF 2
DATE DRAFTED: 1/30/15	DATE SURVEYED: 1/24/15	
REVISED: 5/7/15	FILE NAME: 14-73	

# MULTI-WELL PLAN SECTION 36, T2N, R65W



**WELL NOTES:**

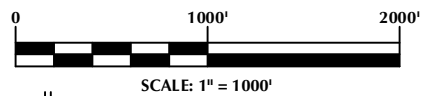
CC OPEN A 34N-36HZ  
 SURFACE: 473' FNL, 494' FWL  
 BOTTOM HOLE: 460' FSL, 158' FWL

CC OPEN A 13C-36HZ  
 SURFACE: 474' FNL, 524' FWL  
 BOTTOM HOLE: 461' FSL, 738' FWL

CC OPEN A 35N-36HZ  
 SURFACE: 474' FNL, 554' FWL  
 BOTTOM HOLE: 461' FSL, 1254' FWL

**NOTES:**

- ▲ INDICATES FOUND SECTION CORNER
- INDICATES CALCULATED CORNER
- BASIS OF BEARING DERIVED FROM COLORADO COORDINATE SYSTEM 1983 NORTH ZONE UNLESS OTHERWISE NOTED.
- ALL MEASURED DISTANCES ARE GRID. COMBINED SCALE FACTOR: .99972880
- WELL FOOTAGES ARE MEASURED AT RIGHT ANGLES TO THE SECTION LINES.



**WELL PAD - CC OPEN A 13C-36HZ**

MULTI-WELL PLAN  
 CC OPEN A 34N-36HZ,  
 CC OPEN A 13C-36HZ &  
 CC OPEN A 35N-36HZ  
 LOCATED IN SECTIONS 25 & 36  
 T2N, R65W, 6TH P.M.  
 WELD COUNTY, COLORADO

**Kerr-McGee Oil &  
 Gas Onshore L.P.**

1099 18th Street  
 Denver, Colorado 80202



**CONSULTING, LLC**

**SHERIDAN OFFICE**  
 1095 Saberton Avenue  
 Sheridan, Wyoming 82801  
 Phone 307-674-0609

**LOVELAND OFFICE**  
 1635 Foxtrail Drive, Suite 204  
 Loveland, Colorado 80538  
 Phone 970-776-4331

DRAFTED BY: LMO	CHECKED BY: BJR	SHEET NO: <b>1B</b> 1B OF 2
DATE DRAFTED: 1/30/15	DATE SURVEYED: 1/24/15	
REVISED: 5/7/15	FILE NAME: 14-73	

K:\ADARKO\2014\2014\_73\_CC\_OPEN\_A\_13C-36HZ\PLAT\36\_OPEN\_A\_13C-36HZ\CC\_OPEN\_A\_13C-36HZ\MULTI-WELL PLAN SHEET 1.dwg, 5/7/2015 2:11:31 PM, samuel

# MULTI-WELL PLAN SECTION 25, T2N, R65W

NUMBER	WELL NAME	API NUMBER	LATITUDE (NAD 83)	LONGITUDE (NAD 83)	SURFACE ELEVATION	TOTAL DEPTH
1	CC Open A 11-25	05-123-25613	40.115467	-104.620086	4902.1	7773
2	CC OPEN A 21-25	05-123-22222	40.115418	-104.614616	4900.6	7747
3	SHAKLEE 41-25	05-123-21549	40.115493	-104.604423	4901.2	7735
4	CC OPEN USX X 25-5	05-123-14442	40.112108	-104.617156	4911.1	7780
5	SHAKLEE USX X25-05D	05-123-33986	40.111699	-104.614740	4906.1	7513
6	SHAKLEE USX X25-29D	05-123-33984	40.111698	-104.614661	4907.4	7698
7	SHAKLEE USX X25-20D	05-123-33997	40.111696	-104.614583	4907.2	7930
8	SHAKLEE USX X25-02D	05-123-34310	40.111693	-104.614501	4906.6	8110
9	SHAKLEE USX X25-06	05-123-33989	40.111691	-104.614421	4907.3	7360
10	SHAKLEE USX X25-18D	05-123-33990	40.111689	-104.614341	4907.0	7468
11	SHAKLEE USX X25-17D	05-123-34324	40.111689	-104.614260	4906.6	7743
12	SHAKLEE USX X25-08D	05-123-34321	40.111686	-104.614179	4907.3	8315
13	SHAKLEE 32-25	05-123-21558	40.111506	-104.610088	4900.5	7921
14	*HSR-ZELDA 13-25	05-123-20381	40.108906	-104.619919	N/A	594
15	OPEN 10-25	05-123-20969	40.107510	-104.609918	4905.3	7786
16	HSR-SHAKLEE 13-25	05-123-19954	40.105617	-104.616944	4918.2	7935

**NOTES:**

- \* INDICATES EXISTING WELLS THAT WERE NOT SURVEYED BUT DERIVED FROM COLORADO OIL AND GAS CONSERVATION COMMISSION (COGCC).

**EXISTING WELL EXHIBIT  
SECTION 25, T2N, R65W, 6TH P.M.  
WELD COUNTY, COLORADO**

**Kerr-McGee Oil &  
Gas Onshore L.P.  
1099 18th Street  
Denver, Colorado 80202**



**CONSULTING, LLC**

<b>SHERIDAN OFFICE</b> 1095 Saberton Avenue Sheridan, Wyoming 82801 Phone 307-674-0609	<b>LOVELAND OFFICE</b> 1635 Foxtrail Drive, Suite 204 Loveland, Colorado 80538 Phone 970-776-4331
---	--

DRAFTED BY:	LMO	CHECKED BY:	BJR	<b>SHEET NO: 2A</b>
DATE DRAFTED:	1/28/15	DATE SURVEYED:	1/24/15	
REVISED:		FILE NAME:	14-73	

# MULTI-WELL PLAN SECTION 36, T2N, R65W

NUMBER	WELL NAME	API NUMBER	LATITUDE (NAD 83)	LONGITUDE (NAD 83)	SURFACE ELEVATION	TOTAL DEPTH
1	WILLARD STATE X 36-3	05-123-25442	40.100167	-104.615215	4921.0	7808
2	ACCO-TERRA-STATE 24	05-123-07675	40.098840	-104.608530	4921.7	7755
3	WILLARD STATE X 36-5	05-123-25443	40.096451	-104.619272	4928.6	7807
4	DPC STATE X 36-08	05-123-25744	40.096607	-104.605189	4920.4	7761
5	HUDSON STATE X 36-07D	05-123-33560	40.096508	-104.605080	4920.8	7997
6	HUDSON STATE X 36-01D	05-123-33561	40.096458	-104.605019	4921.2	7783
7	ACCO-TERRA-STATE 3	05-123-07558	40.092087	-104.618078	4933.4	7828
8	DPC STATE X 36-10	05-123-26942	40.092524	-104.610362	4932.1	7772
9	DPC State X 36-09	05-123-25781	40.093160	-104.604619	4926.5	7764

**NOTES:**

- \* INDICATES EXISTING WELLS THAT WERE NOT SURVEYED BUT DERIVED FROM COLORADO OIL AND GAS CONSERVATION COMMISSION (COGCC).

**EXISTING WELL EXHIBIT  
SECTION 36, T2N, R65W, 6TH P.M.  
WELD COUNTY, COLORADO**

**Kerr-McGee Oil &  
Gas Onshore L.P.  
1099 18th Street  
Denver, Colorado 80202**



**CONSULTING, LLC**

<b>SHERIDAN OFFICE</b> 1095 Saberton Avenue Sheridan, Wyoming 82801 Phone 307-674-0609	<b>LOVELAND OFFICE</b> 1635 Foxtrail Drive, Suite 204 Loveland, Colorado 80538 Phone 970-776-4331
---	--

DRAFTED BY:	LMO	CHECKED BY:	BJR	<b>SHEET NO: 2B</b>
DATE DRAFTED:	1/28/15	DATE SURVEYED:	1/24/15	
REVISED:		FILE NAME:	14-73	