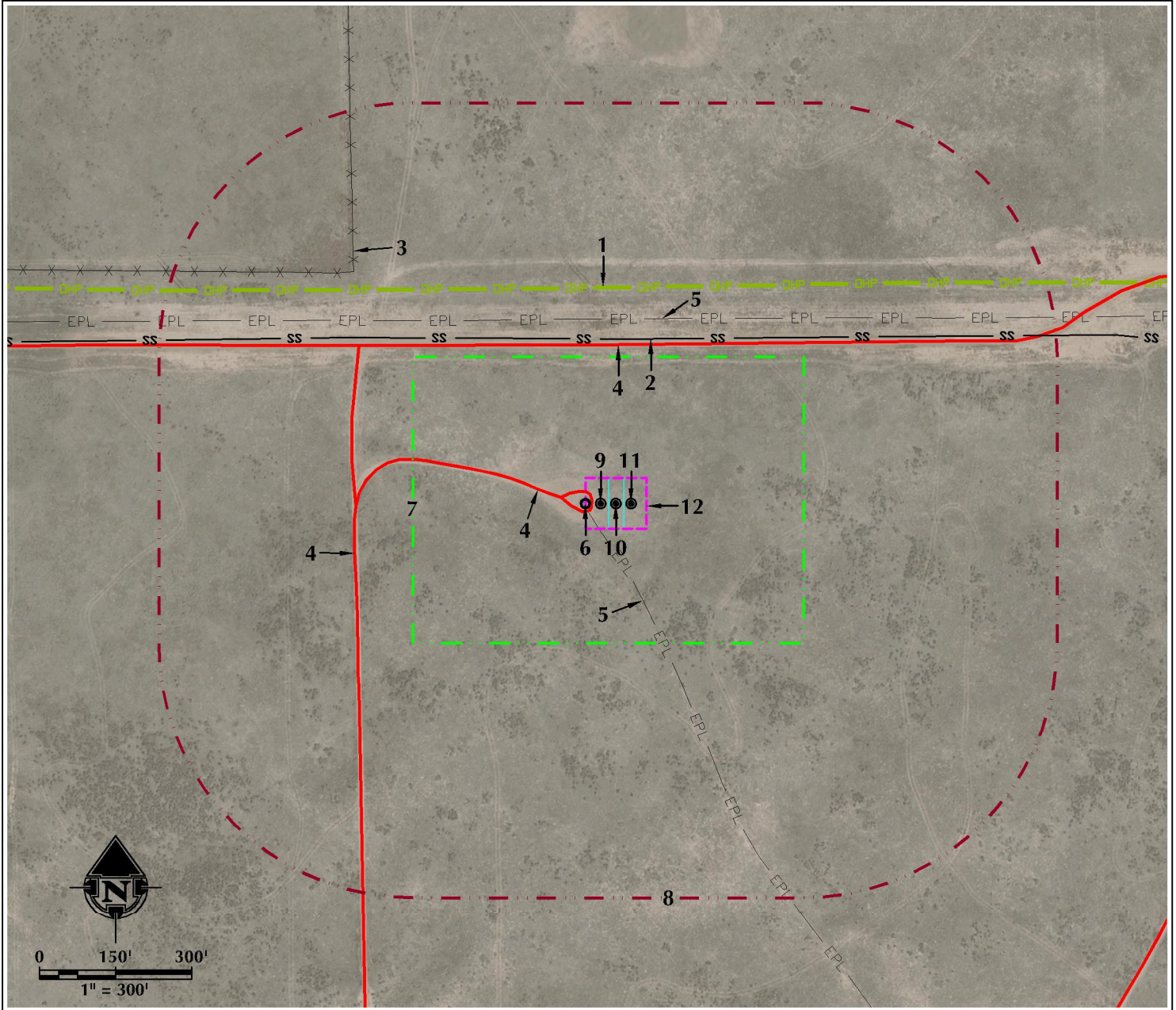


LOCATION DRAWING CC OPEN A 13C-36HZ

HORIZONTAL MULTI-WELL PAD

NW1/4 NW1/4 SECTION 25, TOWNSHIP 2 NORTH, RANGE 65 WEST, 6TH P.M.



- | | | |
|--|--|--|
| <p>1. OVERHEAD POWER LINES ARE ±426' N.</p> <p>2. SANITARY SEWER IS ±325' N.</p> <p>3. EXISTING FENCE IS ±690' NW.</p> <p>4. EXISTING PRIVATE ROADS ARE ±47' W, ±314' N AND ±513' W.</p> | <p>5. EXISTING BURIED PIPELINES ARE ±60' W AND ±365' N.</p> <p>6. EXISTING WELL: CC Open A 11-25 IS ±60' W.</p> <p>7. OPERATIONAL DISTURBANCE AREA</p> <p>8. 500' BUFFER</p> | <p>9. PROPOSED WELL: CC OPEN A 34N-36HZ</p> <p>10. PROPOSED WELL: CC OPEN A 13C-36HZ</p> <p>11. PROPOSED WELL: CC OPEN A 35N-36HZ</p> <p>12. PUMP JACK OPERATIONS AREA</p> |
|--|--|--|

LEGEND

- | | | |
|---|---|---|
| <ul style="list-style-type: none"> ● EXISTING WELL ○ PROPOSED WELL ⊙ WATER WELL ⊗ EXISTING FENCE — PUBLIC ROAD — PRIVATE ROAD | <ul style="list-style-type: none"> - - - 500' BUFFER - - - DISTURBANCE AREA - - - PUMP JACK AREA - - - PROPOSED FACILITY - - - EXISTING PIPELINE - - - DITCH/CANAL/DRAINAGE | <ul style="list-style-type: none"> — DHP OVERHEAD POWER LINE — UGP BURIED POWER LINE — SS SANITARY SEWER — EXISTING FACILITY — EXISTING BUILDINGS — RESIDENCE/BUILDING UNIT |
|---|---|---|

*** REFERENCE LOCATION ***
 ALL MEASUREMENTS ARE MADE FROM
 REFERENCE WELL: CC OPEN A 13C-36HZ
 LAT: 40.115465° LONG: -104.619871° (NAD83)
 EXISTING GROUND ELEVATION = 4899.4'
 WELL FOOTAGES: 474' FNL & 524' FWL

SURFACE USE: RANGELAND

NEAREST BUILDING UNIT: ±2537' NE

PREPARED FOR:
Kerr-McGee Oil & Gas Onshore L.P.



DATE SURVEYED: 1/24/15
 DATE: 1/27/15
 DRAFTER: JFE
 REVISED:

DATA SOURCES:
 - AERIAL COURTESY OF ESRI, INC.
 - WATER WELLS COURTESY OF COLORADO DIVISION OF WATER RESOURCES