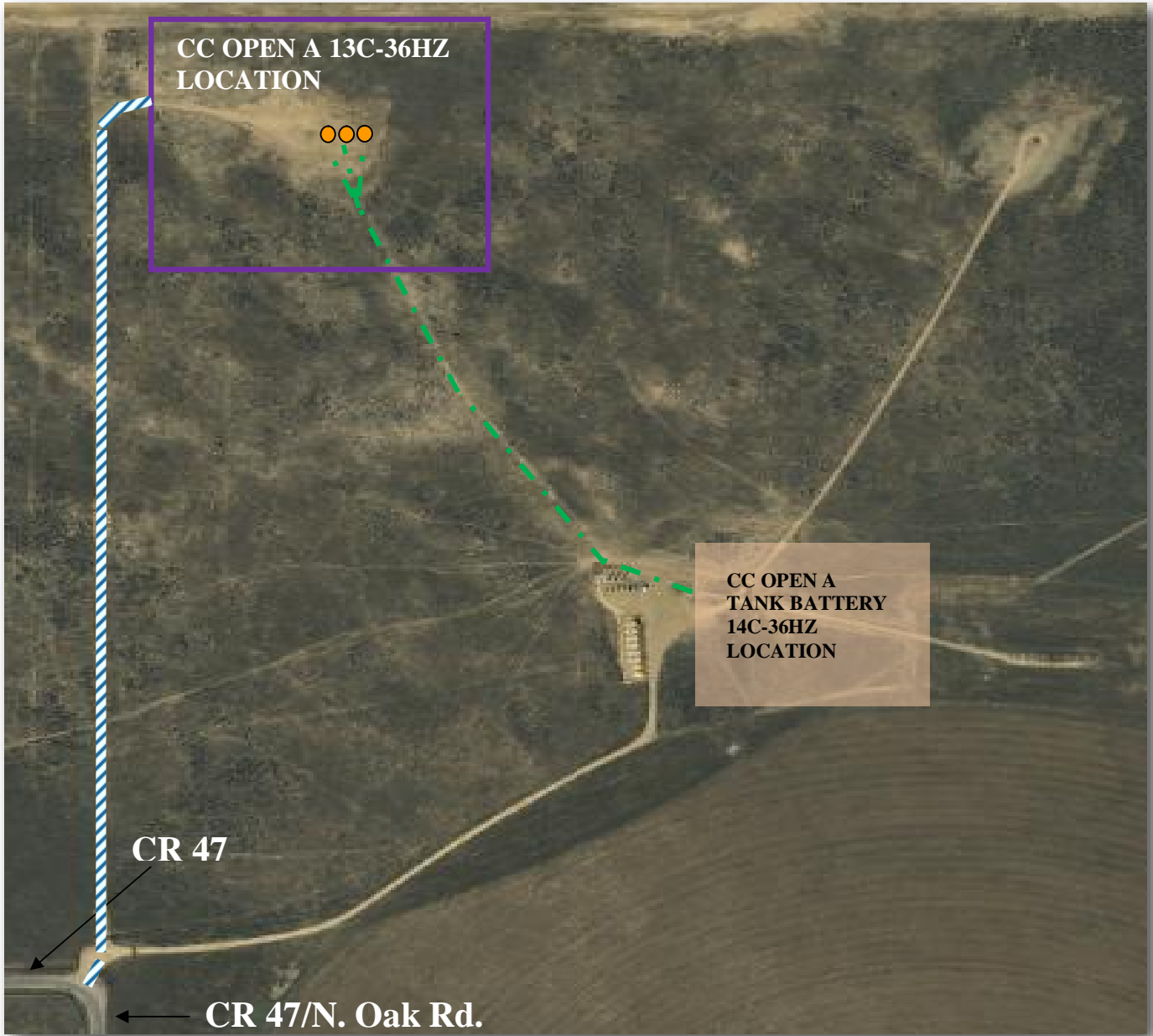









CC OPEN A 13C-36HZ ACCESS ROAD MAP



		Permanent Access Road (post-operations)
		Disturbance Area
		Proposed Facility location
		Surface Hole Location
		Proposed flowline routes
		CC Open A 13C-36HZ Access Map Sec.25-T2N-R65W Weld County, CO
	Edited By: Paul Ratliff	Last Edited: 9/1/2015