

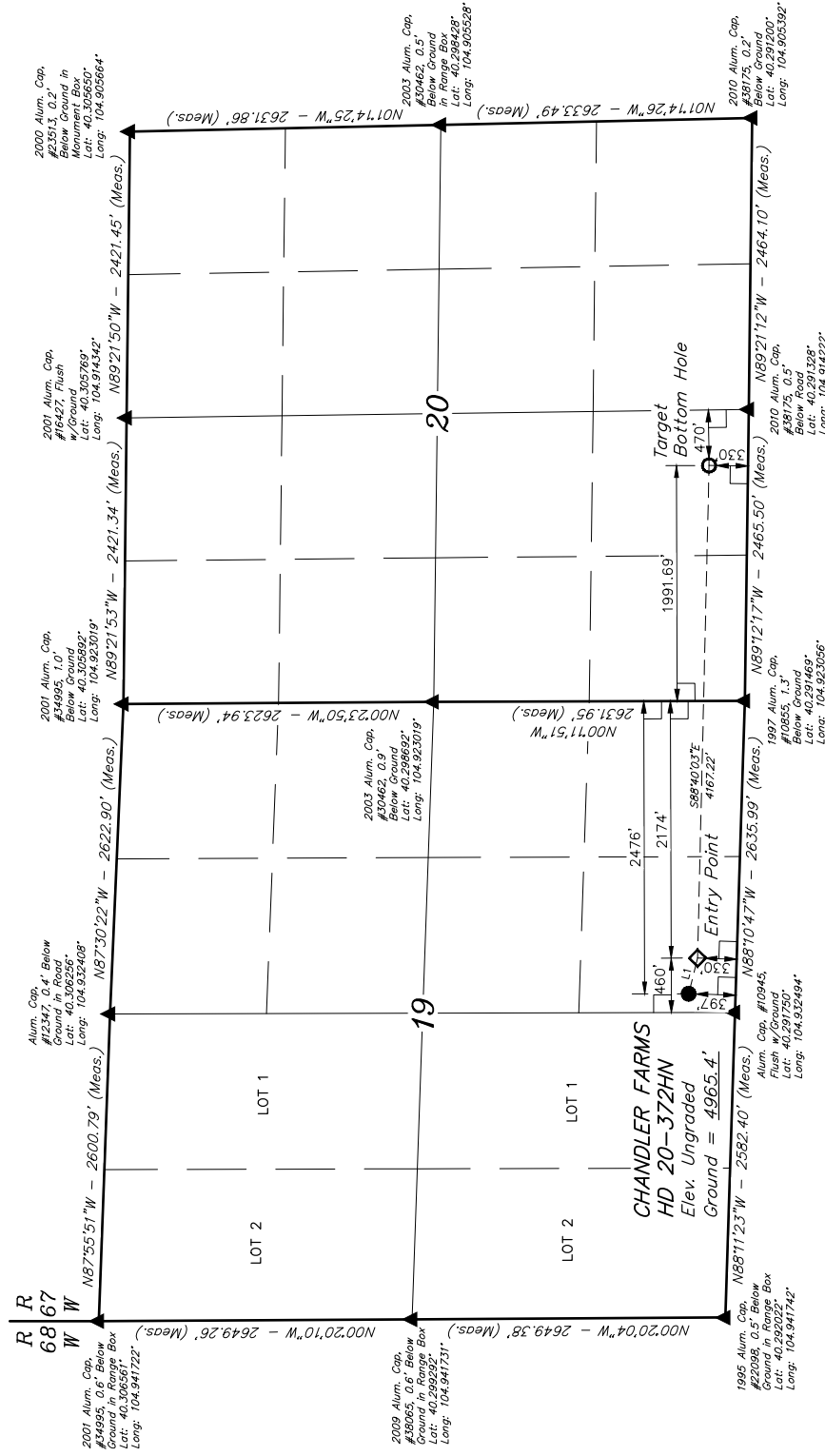
GREAT WESTERN OPERATING COMPANY

**CHANDLER FARMS HD 20-372HN
SW 1/4 SE 1/4, SECTION 19, T4N, R67W, 6th P.M.
WELD COUNTY, COLORADO**

BASIS OF BEARINGS

BASIS OF ELEVATION

USGS COOPERATIVE BASE NETWORK CONTROL STATION,
DESIGNATION "VERMIL YEA", NGS DATA SHEET LISTS THE
NAVD 88 ELEVATION AS BEING 5026 FEET.



LINE TABLE		
LINE	DIRECTION	LENGTH
L1	S75°50'41"E	311.44'

THIS IS TO CERTIFY THAT THE ABOVE
NOTES OF ACTUAL SURVEYS MADE
ACCORDING TO THE PRESENTED
KNOWLEDGE AND BELIEF.



UELS, LLC
Corporate Office * 85 South 200 East
Vernal, UT 84078 * (435) 789-1017

SURVEYED BY: GREG WEIMER, C.J.	DATE: 09-03-14
DRAWN BY: J.W.	DATE DRAWN: 09-16-14
SCALE: 1" = 1000'	REVISED: 09-02-15 J.J.

WELL LOCATION PLAT

LEGEND:

 = 90° SYMBOL

● = PROPOSED WELLHEAD.

◆ = ENTRY POINT.

 = TARGET BOTTOM HOLE.

▲ = SECTION CORNERS LOCATED.