

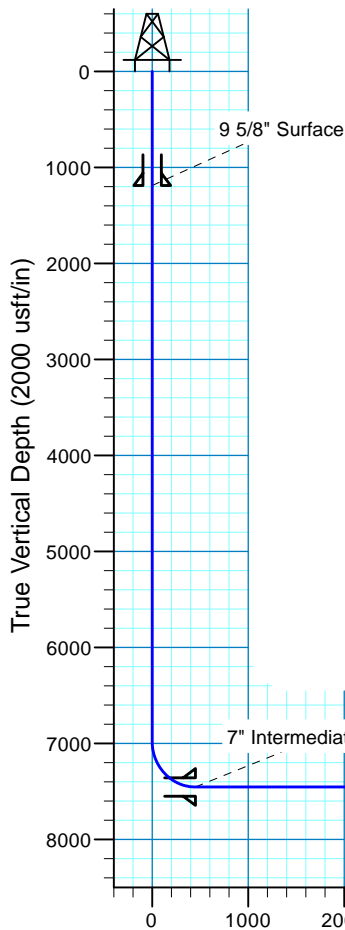
Critter Creek 507-1411H

Sec.14-T11N-R63W
Weld County, Colorado

Surface Location

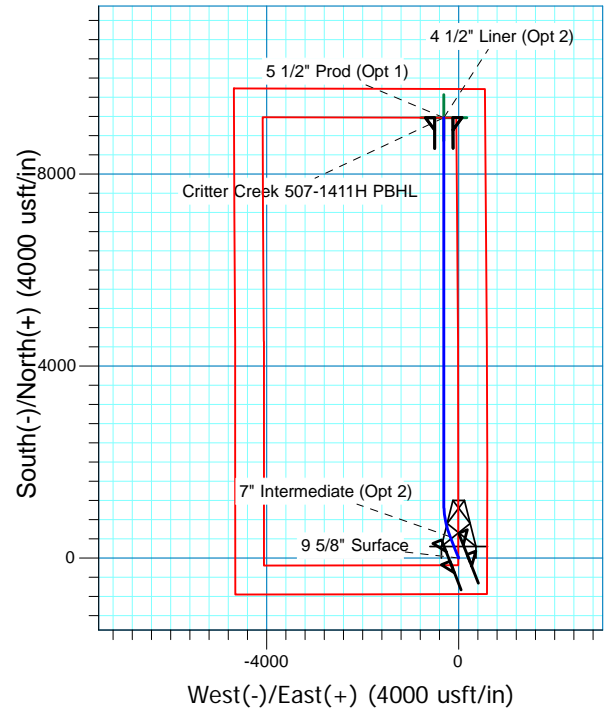
NAD 1927 (NADCON CONUS) Colorado North 501
Ground Elevation: 5234.0 RKB @ 5259.0usft (KB GL+25')

Northing	Easting	Latitude	Longitude
578933.13	2306184.89	40° 55' 2.341 N	104° 23' 31.850 W

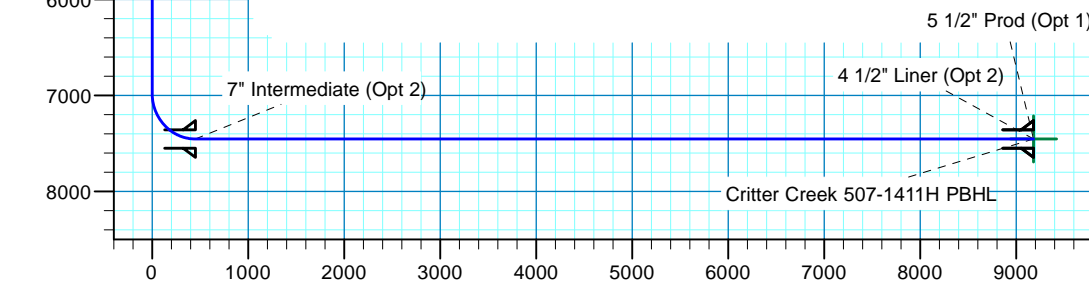


Azimuths to True North
Magnetic North: 8.27°

Magnetic Field
Strength: 52923.1snT
Dip Angle: 67.38°
Date: 6/18/2015
Model: IGRF2015



Project: DJ - Hereford Ranch
Site: Critter Creek C14 SESE Pad
Well: Critter Creek 507-1411H
Plan: APD Plan (Plat Cert 4/17/15)



Vertical Section at 358.08° (2000 usft/in)

SECTION DETAILS

Sec	MD	Inc	Azi	TVD	+N/-S	+E/-W	Dleg	TFace	VSect	Target
1	0.0	0.00	0.00	0.0	0.0	0.0	0.00	0.00	0.0	
2	6977.5	0.00	0.00	6977.5	0.0	0.0	0.00	0.00	0.0	
3	7727.5	90.00	338.55	7455.0	444.4	-174.6	12.00	338.55	450.0	Critter Creek 507-1411H PBHL
4	8442.5	90.00	360.00	7455.0	1142.8	-306.9	3.00	90.00	1152.4	Critter Creek 507-1411H PBHL
5	16475.2	90.00	360.00	7455.0	9175.5	-307.1	0.00	0.00	9180.7	Critter Creek 507-1411H PBHL

TARGET DETAILS

Name	TVD	+N/-S	+E/-W	Northing	Easting	Latitude	Longitude	Shape
Critter Creek 507-1411H PBHL	7455.0	9175.5	-307.1	588104.12	2305763.19	40° 56' 33.001 N	104° 23' 35.851 W	Point

Denver Division- Colorado

**DJ - Hereford Ranch
Critter Creek C14 SESE Pad
Critter Creek 507-1411H**

OH

Plan: APD Plan (Plat Cert 4/17/15)

Standard Planning Report

18 June, 2015

EOG Resources, Inc.

Planning Report

Database:	EDM_DENVER	Local Co-ordinate Reference:	Well Critter Creek 507-1411H
Company:	Denver Division- Colorado	TVD Reference:	RKB @ 5259.0usft (KB GL+25')
Project:	DJ - Hereford Ranch	MD Reference:	RKB @ 5259.0usft (KB GL+25')
Site:	Critter Creek C14 SESE Pad	North Reference:	True
Well:	Critter Creek 507-1411H	Survey Calculation Method:	Minimum Curvature
Wellbore:	OH		
Design:	APD Plan (Plat Cert 4/17/15)		

Project	DJ - Hereford Ranch, Weld County		
Map System:	US State Plane 1927 (Exact solution)	System Datum:	Mean Sea Level
Geo Datum:	NAD 1927 (NADCON CONUS)		
Map Zone:	Colorado North 501		

Site	Critter Creek C14 SESE Pad		
Site Position:		Northing:	578,750.00 usft
From:	Map	Easting:	2,306,150.00 usft
Position Uncertainty:	0.0 usft	Slot Radius:	13-3/16 "
		Latitude:	40° 55' 0.536 N
		Longitude:	104° 23' 32.334 W
		Grid Convergence:	0.72 °

Well	Critter Creek 507-1411H		
Well Position	+N/-S	182.7 usft	Northing:
	+E/-W	37.2 usft	Easting:
Position Uncertainty	0.0 usft	Wellhead Elevation:	0.0 usft
		Latitude:	40° 55' 2.341 N
		Longitude:	104° 23' 31.850 W
		Ground Level:	5,234.0 usft

Wellbore	OH				
Magnetics	Model Name	Sample Date	Declination (°)	Dip Angle (°)	Field Strength (nT)
	IGRF2015	6/18/2015	8.26	67.38	52,923

Design	APD Plan (Plat Cert 4/17/15)			
Audit Notes:				
Version:	Phase:	PROTOTYPE	Tie On Depth:	0.0
Vertical Section:	Depth From (TVD) (usft)	+N/-S (usft)	+E/-W (usft)	Direction (°)
	0.0	0.0	0.0	358.08

Plan Sections										
Measured Depth (usft)	Inclination (°)	Azimuth (°)	Vertical Depth (usft)	+N/-S (usft)	+E/-W (usft)	Dogleg Rate (°/100usft)	Build Rate (°/100usft)	Turn Rate (°/100usft)	TFO (°)	Target
0.0	0.00	0.00	0.0	0.0	0.0	0.00	0.00	0.00	0.00	
6,977.5	0.00	0.00	6,977.5	0.0	0.0	0.00	0.00	0.00	0.00	
7,727.5	90.00	338.55	7,455.0	444.4	-174.6	12.00	12.00	0.00	338.55	
8,442.4	90.00	360.00	7,455.0	1,142.8	-306.9	3.00	0.00	3.00	90.00	Critter Creek 507-141
16,475.2	90.00	360.00	7,455.0	9,175.5	-307.1	0.00	0.00	0.00	0.00	Critter Creek 507-141

EOG Resources, Inc.

Planning Report

Database:	EDM_DENVER	Local Co-ordinate Reference:	Well Critter Creek 507-1411H
Company:	Denver Division- Colorado	TVD Reference:	RKB @ 5259.0usft (KB GL+25')
Project:	DJ - Hereford Ranch	MD Reference:	RKB @ 5259.0usft (KB GL+25')
Site:	Critter Creek C14 SESE Pad	North Reference:	True
Well:	Critter Creek 507-1411H	Survey Calculation Method:	Minimum Curvature
Wellbore:	OH		
Design:	APD Plan (Plat Cert 4/17/15)		

Planned Survey									
Measured Depth (usft)	Inclination (°)	Azimuth (°)	Vertical Depth (usft)	+N/-S (usft)	+E/-W (usft)	Vertical Section (usft)	Dogleg Rate (°/100usft)	Build Rate (°/100usft)	Turn Rate (°/100usft)
0.0	0.00	0.00	0.0	0.0	0.0	0.0	0.00	0.00	0.00
100.0	0.00	0.00	100.0	0.0	0.0	0.0	0.00	0.00	0.00
200.0	0.00	0.00	200.0	0.0	0.0	0.0	0.00	0.00	0.00
300.0	0.00	0.00	300.0	0.0	0.0	0.0	0.00	0.00	0.00
400.0	0.00	0.00	400.0	0.0	0.0	0.0	0.00	0.00	0.00
500.0	0.00	0.00	500.0	0.0	0.0	0.0	0.00	0.00	0.00
600.0	0.00	0.00	600.0	0.0	0.0	0.0	0.00	0.00	0.00
700.0	0.00	0.00	700.0	0.0	0.0	0.0	0.00	0.00	0.00
800.0	0.00	0.00	800.0	0.0	0.0	0.0	0.00	0.00	0.00
900.0	0.00	0.00	900.0	0.0	0.0	0.0	0.00	0.00	0.00
1,000.0	0.00	0.00	1,000.0	0.0	0.0	0.0	0.00	0.00	0.00
1,100.0	0.00	0.00	1,100.0	0.0	0.0	0.0	0.00	0.00	0.00
1,189.0	0.00	0.00	1,189.0	0.0	0.0	0.0	0.00	0.00	0.00
9 5/8" Surface									
1,200.0	0.00	0.00	1,200.0	0.0	0.0	0.0	0.00	0.00	0.00
1,300.0	0.00	0.00	1,300.0	0.0	0.0	0.0	0.00	0.00	0.00
1,400.0	0.00	0.00	1,400.0	0.0	0.0	0.0	0.00	0.00	0.00
1,500.0	0.00	0.00	1,500.0	0.0	0.0	0.0	0.00	0.00	0.00
1,600.0	0.00	0.00	1,600.0	0.0	0.0	0.0	0.00	0.00	0.00
1,700.0	0.00	0.00	1,700.0	0.0	0.0	0.0	0.00	0.00	0.00
1,800.0	0.00	0.00	1,800.0	0.0	0.0	0.0	0.00	0.00	0.00
1,900.0	0.00	0.00	1,900.0	0.0	0.0	0.0	0.00	0.00	0.00
2,000.0	0.00	0.00	2,000.0	0.0	0.0	0.0	0.00	0.00	0.00
2,100.0	0.00	0.00	2,100.0	0.0	0.0	0.0	0.00	0.00	0.00
2,200.0	0.00	0.00	2,200.0	0.0	0.0	0.0	0.00	0.00	0.00
2,300.0	0.00	0.00	2,300.0	0.0	0.0	0.0	0.00	0.00	0.00
2,400.0	0.00	0.00	2,400.0	0.0	0.0	0.0	0.00	0.00	0.00
2,500.0	0.00	0.00	2,500.0	0.0	0.0	0.0	0.00	0.00	0.00
2,600.0	0.00	0.00	2,600.0	0.0	0.0	0.0	0.00	0.00	0.00
2,700.0	0.00	0.00	2,700.0	0.0	0.0	0.0	0.00	0.00	0.00
2,800.0	0.00	0.00	2,800.0	0.0	0.0	0.0	0.00	0.00	0.00
2,900.0	0.00	0.00	2,900.0	0.0	0.0	0.0	0.00	0.00	0.00
3,000.0	0.00	0.00	3,000.0	0.0	0.0	0.0	0.00	0.00	0.00
3,100.0	0.00	0.00	3,100.0	0.0	0.0	0.0	0.00	0.00	0.00
3,200.0	0.00	0.00	3,200.0	0.0	0.0	0.0	0.00	0.00	0.00
3,300.0	0.00	0.00	3,300.0	0.0	0.0	0.0	0.00	0.00	0.00
3,400.0	0.00	0.00	3,400.0	0.0	0.0	0.0	0.00	0.00	0.00
3,500.0	0.00	0.00	3,500.0	0.0	0.0	0.0	0.00	0.00	0.00
3,600.0	0.00	0.00	3,600.0	0.0	0.0	0.0	0.00	0.00	0.00
3,700.0	0.00	0.00	3,700.0	0.0	0.0	0.0	0.00	0.00	0.00
3,800.0	0.00	0.00	3,800.0	0.0	0.0	0.0	0.00	0.00	0.00
3,900.0	0.00	0.00	3,900.0	0.0	0.0	0.0	0.00	0.00	0.00
4,000.0	0.00	0.00	4,000.0	0.0	0.0	0.0	0.00	0.00	0.00
4,100.0	0.00	0.00	4,100.0	0.0	0.0	0.0	0.00	0.00	0.00
4,200.0	0.00	0.00	4,200.0	0.0	0.0	0.0	0.00	0.00	0.00
4,300.0	0.00	0.00	4,300.0	0.0	0.0	0.0	0.00	0.00	0.00
4,400.0	0.00	0.00	4,400.0	0.0	0.0	0.0	0.00	0.00	0.00
4,500.0	0.00	0.00	4,500.0	0.0	0.0	0.0	0.00	0.00	0.00
4,600.0	0.00	0.00	4,600.0	0.0	0.0	0.0	0.00	0.00	0.00
4,700.0	0.00	0.00	4,700.0	0.0	0.0	0.0	0.00	0.00	0.00
4,800.0	0.00	0.00	4,800.0	0.0	0.0	0.0	0.00	0.00	0.00
4,900.0	0.00	0.00	4,900.0	0.0	0.0	0.0	0.00	0.00	0.00
5,000.0	0.00	0.00	5,000.0	0.0	0.0	0.0	0.00	0.00	0.00
5,100.0	0.00	0.00	5,100.0	0.0	0.0	0.0	0.00	0.00	0.00

EOG Resources, Inc.

Planning Report

Database:	EDM_DENVER	Local Co-ordinate Reference:	Well Critter Creek 507-1411H
Company:	Denver Division- Colorado	TVD Reference:	RKB @ 5259.0usft (KB GL+25')
Project:	DJ - Hereford Ranch	MD Reference:	RKB @ 5259.0usft (KB GL+25')
Site:	Critter Creek C14 SESE Pad	North Reference:	True
Well:	Critter Creek 507-1411H	Survey Calculation Method:	Minimum Curvature
Wellbore:	OH		
Design:	APD Plan (Plat Cert 4/17/15)		

Planned Survey									
Measured Depth (usft)	Inclination (°)	Azimuth (°)	Vertical Depth (usft)	+N/-S (usft)	+E/-W (usft)	Vertical Section (usft)	Dogleg Rate (°/100usft)	Build Rate (°/100usft)	Turn Rate (°/100usft)
5,200.0	0.00	0.00	5,200.0	0.0	0.0	0.0	0.00	0.00	0.00
5,300.0	0.00	0.00	5,300.0	0.0	0.0	0.0	0.00	0.00	0.00
5,400.0	0.00	0.00	5,400.0	0.0	0.0	0.0	0.00	0.00	0.00
5,500.0	0.00	0.00	5,500.0	0.0	0.0	0.0	0.00	0.00	0.00
5,600.0	0.00	0.00	5,600.0	0.0	0.0	0.0	0.00	0.00	0.00
5,700.0	0.00	0.00	5,700.0	0.0	0.0	0.0	0.00	0.00	0.00
5,800.0	0.00	0.00	5,800.0	0.0	0.0	0.0	0.00	0.00	0.00
5,900.0	0.00	0.00	5,900.0	0.0	0.0	0.0	0.00	0.00	0.00
6,000.0	0.00	0.00	6,000.0	0.0	0.0	0.0	0.00	0.00	0.00
6,100.0	0.00	0.00	6,100.0	0.0	0.0	0.0	0.00	0.00	0.00
6,200.0	0.00	0.00	6,200.0	0.0	0.0	0.0	0.00	0.00	0.00
6,300.0	0.00	0.00	6,300.0	0.0	0.0	0.0	0.00	0.00	0.00
6,400.0	0.00	0.00	6,400.0	0.0	0.0	0.0	0.00	0.00	0.00
6,500.0	0.00	0.00	6,500.0	0.0	0.0	0.0	0.00	0.00	0.00
6,600.0	0.00	0.00	6,600.0	0.0	0.0	0.0	0.00	0.00	0.00
6,700.0	0.00	0.00	6,700.0	0.0	0.0	0.0	0.00	0.00	0.00
6,800.0	0.00	0.00	6,800.0	0.0	0.0	0.0	0.00	0.00	0.00
6,900.0	0.00	0.00	6,900.0	0.0	0.0	0.0	0.00	0.00	0.00
6,977.5	0.00	0.00	6,977.5	0.0	0.0	0.0	0.00	0.00	0.00
7,000.0	2.70	338.55	7,000.0	0.5	-0.2	0.5	12.00	12.00	0.00
7,100.0	14.70	338.55	7,098.7	14.5	-5.7	14.7	12.00	12.00	0.00
7,200.0	26.70	338.55	7,192.0	47.4	-18.6	48.0	12.00	12.00	0.00
7,300.0	38.70	338.55	7,276.0	97.6	-38.3	98.8	12.00	12.00	0.00
7,400.0	50.70	338.55	7,347.0	162.9	-64.0	165.0	12.00	12.00	0.00
7,500.0	62.70	338.55	7,401.8	240.6	-94.5	243.6	12.00	12.00	0.00
7,600.0	74.70	338.55	7,438.0	327.1	-128.5	331.2	12.00	12.00	0.00
7,700.0	86.70	338.55	7,454.2	418.8	-164.6	424.1	12.00	12.00	0.00
7,727.5	90.00	338.55	7,455.0	444.4	-174.6	450.0	12.00	12.00	0.00
7,728.0	90.00	338.57	7,455.0	444.9	-174.8	450.5	3.00	0.00	3.00
7" Intermediate (Opt 2)									
7,800.0	90.00	340.73	7,455.0	512.4	-199.8	518.8	3.00	0.00	3.00
7,900.0	90.00	343.73	7,455.0	607.6	-230.4	614.9	3.00	0.00	3.00
8,000.0	90.00	346.73	7,455.0	704.3	-255.9	712.4	3.00	0.00	3.00
8,100.0	90.00	349.73	7,455.0	802.1	-276.3	810.9	3.00	0.00	3.00
8,200.0	90.00	352.73	7,455.0	901.0	-291.5	910.2	3.00	0.00	3.00
8,300.0	90.00	355.73	7,455.0	1,000.4	-301.6	1,010.0	3.00	0.00	3.00
8,400.0	90.00	358.73	7,455.0	1,100.3	-306.4	1,109.9	3.00	0.00	3.00
8,442.4	90.00	360.00	7,455.0	1,142.8	-306.9	1,152.4	3.00	0.00	3.00
8,500.0	90.00	360.00	7,455.0	1,200.3	-306.9	1,209.9	0.00	0.00	0.00
8,600.0	90.00	360.00	7,455.0	1,300.3	-306.9	1,309.8	0.00	0.00	0.00
8,700.0	90.00	360.00	7,455.0	1,400.3	-306.9	1,409.8	0.00	0.00	0.00
8,800.0	90.00	360.00	7,455.0	1,500.3	-306.9	1,509.7	0.00	0.00	0.00
8,900.0	90.00	360.00	7,455.0	1,600.3	-306.9	1,609.7	0.00	0.00	0.00
9,000.0	90.00	360.00	7,455.0	1,700.3	-306.9	1,709.6	0.00	0.00	0.00
9,100.0	90.00	360.00	7,455.0	1,800.3	-306.9	1,809.6	0.00	0.00	0.00
9,200.0	90.00	360.00	7,455.0	1,900.3	-306.9	1,909.5	0.00	0.00	0.00
9,300.0	90.00	360.00	7,455.0	2,000.3	-306.9	2,009.5	0.00	0.00	0.00
9,400.0	90.00	360.00	7,455.0	2,100.3	-306.9	2,109.4	0.00	0.00	0.00
9,500.0	90.00	360.00	7,455.0	2,200.3	-306.9	2,209.3	0.00	0.00	0.00
9,600.0	90.00	360.00	7,455.0	2,300.3	-306.9	2,309.3	0.00	0.00	0.00
9,700.0	90.00	360.00	7,455.0	2,400.3	-306.9	2,409.2	0.00	0.00	0.00
9,800.0	90.00	360.00	7,455.0	2,500.3	-306.9	2,509.2	0.00	0.00	0.00
9,900.0	90.00	360.00	7,455.0	2,600.3	-306.9	2,609.1	0.00	0.00	0.00

EOG Resources, Inc.

Planning Report

Database:	EDM_DENVER	Local Co-ordinate Reference:	Well Critter Creek 507-1411H
Company:	Denver Division- Colorado	TVD Reference:	RKB @ 5259.0usft (KB GL+25')
Project:	DJ - Hereford Ranch	MD Reference:	RKB @ 5259.0usft (KB GL+25')
Site:	Critter Creek C14 SESE Pad	North Reference:	True
Well:	Critter Creek 507-1411H	Survey Calculation Method:	Minimum Curvature
Wellbore:	OH		
Design:	APD Plan (Plat Cert 4/17/15)		

Planned Survey									
Measured Depth (usft)	Inclination (°)	Azimuth (°)	Vertical Depth (usft)	+N/-S (usft)	+E/-W (usft)	Vertical Section (usft)	Dogleg Rate (°/100usft)	Build Rate (°/100usft)	Turn Rate (°/100usft)
10,000.0	90.00	360.00	7,455.0	2,700.3	-306.9	2,709.1	0.00	0.00	0.00
10,100.0	90.00	360.00	7,455.0	2,800.3	-306.9	2,809.0	0.00	0.00	0.00
10,200.0	90.00	360.00	7,455.0	2,900.3	-306.9	2,909.0	0.00	0.00	0.00
10,300.0	90.00	360.00	7,455.0	3,000.3	-306.9	3,008.9	0.00	0.00	0.00
10,400.0	90.00	360.00	7,455.0	3,100.3	-306.9	3,108.8	0.00	0.00	0.00
10,500.0	90.00	360.00	7,455.0	3,200.3	-306.9	3,208.8	0.00	0.00	0.00
10,600.0	90.00	360.00	7,455.0	3,300.3	-306.9	3,308.7	0.00	0.00	0.00
10,700.0	90.00	360.00	7,455.0	3,400.3	-306.9	3,408.7	0.00	0.00	0.00
10,800.0	90.00	360.00	7,455.0	3,500.3	-306.9	3,508.6	0.00	0.00	0.00
10,900.0	90.00	360.00	7,455.0	3,600.3	-307.0	3,608.6	0.00	0.00	0.00
11,000.0	90.00	360.00	7,455.0	3,700.3	-307.0	3,708.5	0.00	0.00	0.00
11,100.0	90.00	360.00	7,455.0	3,800.3	-307.0	3,808.5	0.00	0.00	0.00
11,200.0	90.00	360.00	7,455.0	3,900.3	-307.0	3,908.4	0.00	0.00	0.00
11,300.0	90.00	360.00	7,455.0	4,000.3	-307.0	4,008.3	0.00	0.00	0.00
11,400.0	90.00	360.00	7,455.0	4,100.3	-307.0	4,108.3	0.00	0.00	0.00
11,500.0	90.00	360.00	7,455.0	4,200.3	-307.0	4,208.2	0.00	0.00	0.00
11,600.0	90.00	360.00	7,455.0	4,300.3	-307.0	4,308.2	0.00	0.00	0.00
11,700.0	90.00	360.00	7,455.0	4,400.3	-307.0	4,408.1	0.00	0.00	0.00
11,800.0	90.00	360.00	7,455.0	4,500.3	-307.0	4,508.1	0.00	0.00	0.00
11,900.0	90.00	360.00	7,455.0	4,600.3	-307.0	4,608.0	0.00	0.00	0.00
12,000.0	90.00	360.00	7,455.0	4,700.3	-307.0	4,707.9	0.00	0.00	0.00
12,100.0	90.00	360.00	7,455.0	4,800.3	-307.0	4,807.9	0.00	0.00	0.00
12,200.0	90.00	360.00	7,455.0	4,900.3	-307.0	4,907.8	0.00	0.00	0.00
12,300.0	90.00	360.00	7,455.0	5,000.3	-307.0	5,007.8	0.00	0.00	0.00
12,400.0	90.00	360.00	7,455.0	5,100.3	-307.0	5,107.7	0.00	0.00	0.00
12,500.0	90.00	360.00	7,455.0	5,200.3	-307.0	5,207.7	0.00	0.00	0.00
12,600.0	90.00	360.00	7,455.0	5,300.3	-307.0	5,307.6	0.00	0.00	0.00
12,700.0	90.00	360.00	7,455.0	5,400.3	-307.0	5,407.6	0.00	0.00	0.00
12,800.0	90.00	360.00	7,455.0	5,500.3	-307.0	5,507.5	0.00	0.00	0.00
12,900.0	90.00	360.00	7,455.0	5,600.3	-307.0	5,607.4	0.00	0.00	0.00
13,000.0	90.00	360.00	7,455.0	5,700.3	-307.0	5,707.4	0.00	0.00	0.00
13,100.0	90.00	360.00	7,455.0	5,800.3	-307.0	5,807.3	0.00	0.00	0.00
13,200.0	90.00	360.00	7,455.0	5,900.3	-307.0	5,907.3	0.00	0.00	0.00
13,300.0	90.00	360.00	7,455.0	6,000.3	-307.0	6,007.2	0.00	0.00	0.00
13,400.0	90.00	360.00	7,455.0	6,100.3	-307.0	6,107.2	0.00	0.00	0.00
13,500.0	90.00	360.00	7,455.0	6,200.3	-307.0	6,207.1	0.00	0.00	0.00
13,600.0	90.00	360.00	7,455.0	6,300.3	-307.0	6,307.1	0.00	0.00	0.00
13,700.0	90.00	360.00	7,455.0	6,400.3	-307.0	6,407.0	0.00	0.00	0.00
13,800.0	90.00	360.00	7,455.0	6,500.3	-307.0	6,506.9	0.00	0.00	0.00
13,900.0	90.00	360.00	7,455.0	6,600.3	-307.0	6,606.9	0.00	0.00	0.00
14,000.0	90.00	360.00	7,455.0	6,700.3	-307.0	6,706.8	0.00	0.00	0.00
14,100.0	90.00	360.00	7,455.0	6,800.3	-307.0	6,806.8	0.00	0.00	0.00
14,200.0	90.00	360.00	7,455.0	6,900.3	-307.0	6,906.7	0.00	0.00	0.00
14,300.0	90.00	360.00	7,455.0	7,000.3	-307.0	7,006.7	0.00	0.00	0.00
14,400.0	90.00	360.00	7,455.0	7,100.3	-307.0	7,106.6	0.00	0.00	0.00
14,500.0	90.00	360.00	7,455.0	7,200.3	-307.0	7,206.6	0.00	0.00	0.00
14,600.0	90.00	360.00	7,455.0	7,300.3	-307.0	7,306.5	0.00	0.00	0.00
14,700.0	90.00	360.00	7,455.0	7,400.3	-307.0	7,406.4	0.00	0.00	0.00
14,800.0	90.00	360.00	7,455.0	7,500.3	-307.1	7,506.4	0.00	0.00	0.00
14,900.0	90.00	360.00	7,455.0	7,600.3	-307.1	7,606.3	0.00	0.00	0.00
15,000.0	90.00	360.00	7,455.0	7,700.3	-307.1	7,706.3	0.00	0.00	0.00
15,100.0	90.00	360.00	7,455.0	7,800.3	-307.1	7,806.2	0.00	0.00	0.00
15,200.0	90.00	360.00	7,455.0	7,900.3	-307.1	7,906.2	0.00	0.00	0.00
15,300.0	90.00	360.00	7,455.0	8,000.3	-307.1	8,006.1	0.00	0.00	0.00

EOG Resources, Inc.

Planning Report

Database:	EDM_DENVER	Local Co-ordinate Reference:	Well Critter Creek 507-1411H
Company:	Denver Division- Colorado	TVD Reference:	RKB @ 5259.0usft (KB GL+25')
Project:	DJ - Hereford Ranch	MD Reference:	RKB @ 5259.0usft (KB GL+25')
Site:	Critter Creek C14 SESE Pad	North Reference:	True
Well:	Critter Creek 507-1411H	Survey Calculation Method:	Minimum Curvature
Wellbore:	OH		
Design:	APD Plan (Plat Cert 4/17/15)		

Planned Survey										
Measured Depth (usft)	Inclination (°)	Azimuth (°)	Vertical Depth (usft)	+N/-S (usft)	+E/-W (usft)	Vertical Section (usft)	Dogleg Rate (°/100usft)	Build Rate (°/100usft)	Turn Rate (°/100usft)	
15,400.0	90.00	360.00	7,455.0	8,100.3	-307.1	8,106.0	0.00	0.00	0.00	
15,500.0	90.00	360.00	7,455.0	8,200.3	-307.1	8,206.0	0.00	0.00	0.00	
15,600.0	90.00	360.00	7,455.0	8,300.3	-307.1	8,305.9	0.00	0.00	0.00	
15,700.0	90.00	360.00	7,455.0	8,400.3	-307.1	8,405.9	0.00	0.00	0.00	
15,800.0	90.00	360.00	7,455.0	8,500.3	-307.1	8,505.8	0.00	0.00	0.00	
15,900.0	90.00	360.00	7,455.0	8,600.3	-307.1	8,605.8	0.00	0.00	0.00	
16,000.0	90.00	360.00	7,455.0	8,700.3	-307.1	8,705.7	0.00	0.00	0.00	
16,100.0	90.00	360.00	7,455.0	8,800.3	-307.1	8,805.7	0.00	0.00	0.00	
16,200.0	90.00	360.00	7,455.0	8,900.3	-307.1	8,905.6	0.00	0.00	0.00	
16,300.0	90.00	360.00	7,455.0	9,000.3	-307.1	9,005.5	0.00	0.00	0.00	
16,400.0	90.00	360.00	7,455.0	9,100.3	-307.1	9,105.5	0.00	0.00	0.00	
16,475.0	90.00	360.00	7,455.0	9,175.3	-307.1	9,180.4	0.00	0.00	0.00	
5 1/2" Prod (Opt 1) - 4 1/2" Liner (Opt 2)										
16,475.2	90.00	360.00	7,455.0	9,175.5	-307.1	9,180.7	0.00	0.00	0.00	

Design Targets										
Target Name	Dip Angle (°)	Dip Dir. (°)	TVD (usft)	+N/-S (usft)	+E/-W (usft)	Northing (usft)	Easting (usft)	Latitude	Longitude	
- hit/miss target										
- Shape										
Critter Creek 507-1411H	0.00	0.00	7,455.0	9,175.5	-307.1	588,104.12	2,305,763.19	40° 56' 33.001 N	104° 23' 35.851 W	
- plan hits target center										
- Point										

Casing Points					
Measured Depth (usft)	Vertical Depth (usft)	Name	Casing Diameter (")	Hole Diameter (")	
1,189.0	1,189.0	9 5/8" Surface	9-5/8	13-1/2	
7,728.0	7,455.0	7" Intermediate (Opt 2)	7	8-3/4	
16,475.0	7,455.0	5 1/2" Prod (Opt 1)	0	7-7/8	
16,475.0	7,455.0	4 1/2" Liner (Opt 2)	4-1/2	6-1/8	