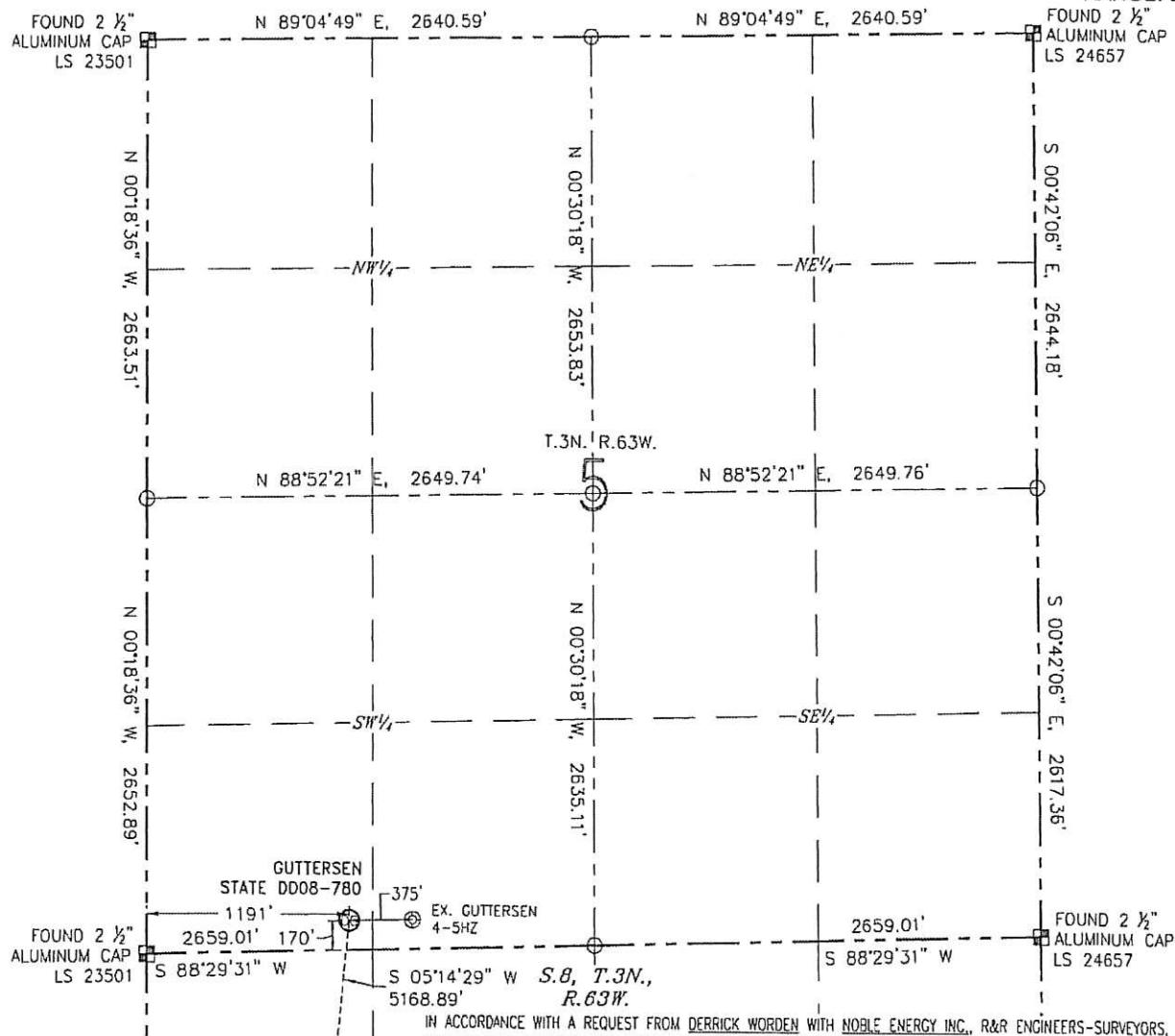


WELL LOCATION CERTIFICATE

GUTTERSEN STATE DD08-780
(SHEET 1 OF 2)

SECTION: 5
TOWNSHIP: 3N
RANGE: 63W

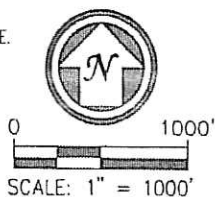


NOTES:

1. BEARINGS ARE GRID BEARINGS OF THE COLORADO STATE PLANE COORDINATE SYSTEM, NORTH ZONE, NAD 83. THE LINEAL DIMENSIONS SHOWN HEREON ARE BASED UPON THE "U.S. SURVEY FOOT".
2. GROUND ELEVATIONS ARE BASED UPON NGS OPUS SOLUTION NAVD 88 DATUM COMPUTED USING GEODIDS.
3. IMPROVEMENTS: SEE LOCATION DRAWING FOR ALL VISIBLE IMPROVEMENTS WITHIN 500' OF THE DISTURBED AREA.
4. SURFACE USE: RANGELAND.
5. INSTRUMENT OPERATOR: ANTONIO SMITH.
6. THE NEAREST EXISTING WELL: GUTTERSEN 4-5HZ, 375' E.

NEAREST CULTURAL ITEMS:

BUILDING:	5280'±
BUILDING UNIT:	5280'±
HIGH OCCUPANCY BUILDING UNIT:	5280'±
DESIGNATED OUTSIDE ACTIVITY AREA:	5280'±
PUBLIC ROAD (CR 57):	5280'±
ABOVEGROUND UTILITY:	5280'±
RAILROAD:	5280'±
PROPERTY LINE:	170' S



- LEGEND
- ⊙ PROPOSED WELL
 - ⊙ EXISTING WELL
 - ⊙ BOTTOM HOLE
 - ⊙ FOUND MONUMENT
 - CALCULATED POSITION

IN ACCORDANCE WITH A REQUEST FROM DERRICK WORDEN WITH NOBLE ENERGY INC., R&R ENGINEERS-SURVEYORS, INC. HAS DETERMINED THE SURFACE HOLE LOCATION OF THE GUTTERSEN STATE DD08-780 WELL TO BE 170' FROM THE SOUTH LINE AND 1191' FROM THE WEST LINE AS MEASURED AT RIGHT ANGLES FROM THE SECTION LINES OF SECTION 5, TOWNSHIP 3 NORTH, RANGE 63 WEST, AND THE BOTTOM HOLE LOCATION TO BE 330' FROM THE SOUTH LINE AND 660' FROM THE WEST LINE AS MEASURED AT RIGHT ANGLES FROM THE SECTION LINES OF SECTION 8, TOWNSHIP 3 NORTH, RANGE 63 WEST OF THE 6TH PRINCIPAL MERIDIAN, WELD COUNTY, COLORADO.

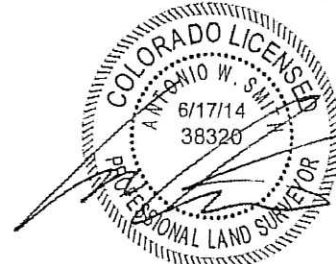
I HEREBY CERTIFY THAT THIS WELL LOCATION CERTIFICATE WAS PREPARED BY ME, OR UNDER MY DIRECT SUPERVISION, THAT THE FIELD WORK WAS COMPLETED ON 02/21/14, FOR AND ON BEHALF OF NOBLE ENERGY INC., THAT IT IS NOT A LAND SURVEY PLAT OR AN IMPROVEMENT SURVEY PLAT, AND THAT IT IS NOT TO BE RELIED UPON FOR ESTABLISHMENT OF FENCES, BUILDINGS, OR OTHER FUTURE IMPROVEMENT LINES.

SURFACE HOLE LOCATION

LATITUDE: N 40.24774'
LONGITUDE: W 104.46692'
POOP: 1.5
ELEVATION: 4869'
¼-¼: SW¼SW¼

BOTTOM HOLE LOCATION

LATITUDE: N 40.23363'
LONGITUDE: W 104.46882'

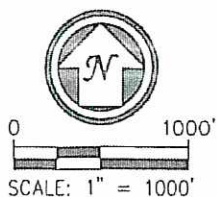
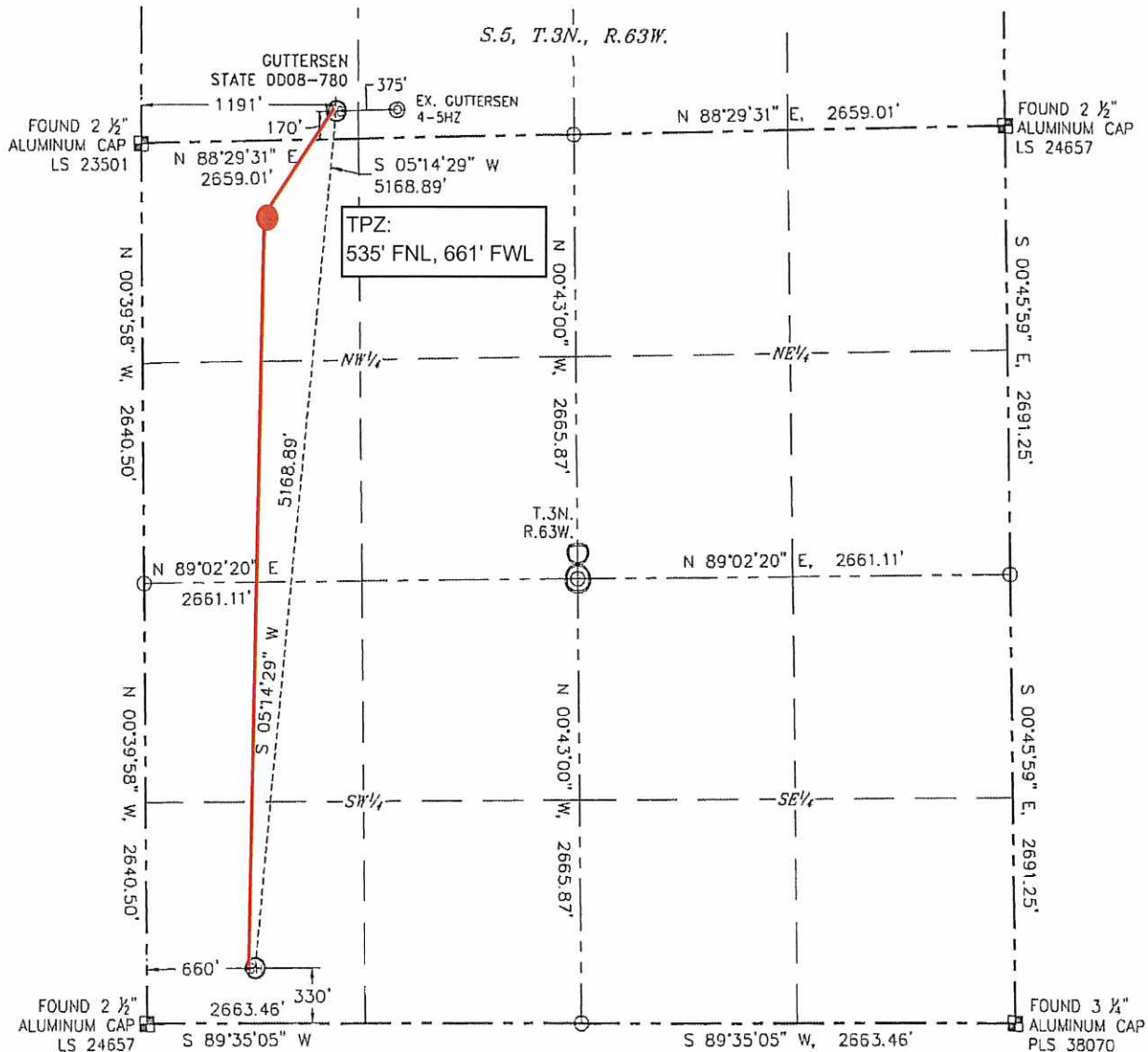


ANTONIO W. SMITH, PLS 38320
FOR AND ON BEHALF OF R&R ENGINEERS-SURVEYORS, INC. DATE: 06/17/2014
JOB NO.: NE14302.1

WELL LOCATION CERTIFICATE

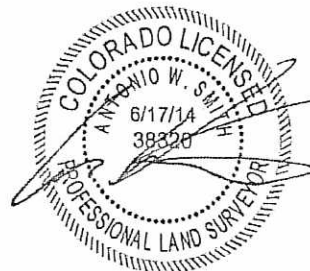
GUTTERSEN STATE DD08-780
(SHEET 2 OF 2)

SECTION: 5
TOWNSHIP: 3N
RANGE: 63W



LEGEND

- ⊙ PROPOSED WELL
- ⊙ BOTTOM HOLE
- ⊙ FOUND MONUMENT
- CALCULATED POSITION



ANTONIO W. SMITH, PLS 38320
FOR AND ON BEHALF OF R&R ENGINEERS-SURVEYORS, INC. DATE: 06/17/2014
JOB NO.: NE14302.1