

1625 Broadway
Suite 2000
Denver, CO 80202

Tel: 303.228.4000
Fax: 303.228.4280
www.nobleenergyinc.com



08/05/2015

Colorado Oil and Gas Conservation Commission
The Chancery Building
1120 Lincoln Street, Suite 801
Denver, CO 80203
Attn: Mr. Matt Lepore, Director

RE: Guttersen State DD08-780 (Doc#400754060)
Section 5: SW/4SW/4 Township 3 North, Range 63 West, 6th P.M.
Weld County, Colorado

Dear Director:

Noble Energy, Inc. ("NEI") is planning to drill the captioned boundary well in accordance with the provisions of COGCC Rule 318A.e.

NEI's proposed wellbore spacing unit consists of the W/2W/2 Sec 8, NW/4NW/4 Sec 17, T3N, R63W, creating a 200-acre wellbore spacing unit for the Niobrara formation. NEI is the only owner within the proposed wellbore spacing unit, therefore NEI hereby attests that no notice letters are required under COGCC Rule 318Ae.(5).

Enclosed are copies of the following documents to assist you in your review and approval of NEI's proposed APD for the captioned well:

- Map & plat illustrating proposed wellbore spacing unit.

Thank you for your attention to the enclosed. NEI respectfully requests that the COGCC review the enclosed information and approve the Application for Permit to Drill the captioned well.

Sincerely,

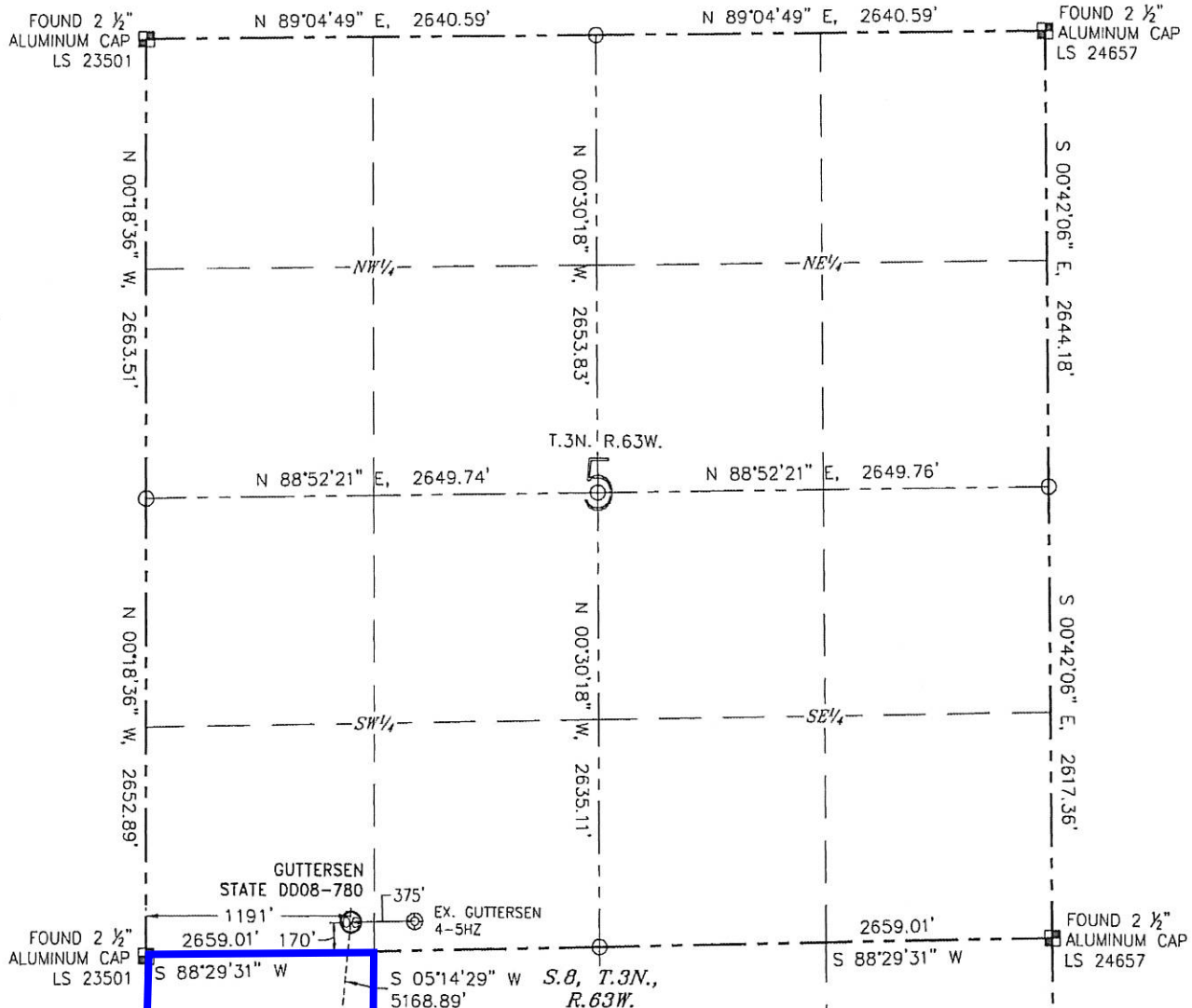
A handwritten signature in black ink that reads 'Andrea Rawson'.

Andrea Rawson
Regulatory Analyst
Noble Energy Inc.

WELL LOCATION CERTIFICATE

GUTTERSEN STATE DD08-780
(SHEET 1 OF 2)

SECTION: 5
TOWNSHIP: 3N
RANGE: 63W

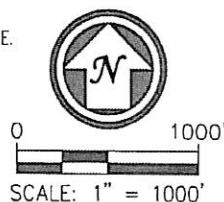


NOTES:

1. BEARINGS ARE GRID BEARINGS OF THE COLORADO STATE PLANE COORDINATE SYSTEM, NORTH ZONE, NAD 83. THE LINEAL DIMENSIONS SHOWN HEREON ARE BASED UPON THE "U.S. SURVEY FOOT".
2. GROUND ELEVATIONS ARE BASED UPON NGS OPUS SOLUTION NAVD 88 DATUM COMPUTED USING GEOID09.
3. IMPROVEMENTS: SEE LOCATION DRAWING FOR ALL VISIBLE IMPROVEMENTS WITHIN 500' OF THE DISTURBED AREA.
4. SURFACE USE: RANGELAND.
5. INSTRUMENT OPERATOR: ANTONIO SMITH.
6. THE NEAREST EXISTING WELL: GUTTERSEN 4-5HZ, 375' E.

NEAREST CULTURAL ITEMS:

BUILDING:	5280' +
BUILDING UNIT:	5280' +
HIGH OCCUPANCY BUILDING UNIT:	5280' +
DESIGNATED OUTSIDE ACTIVITY AREA:	5280' +
PUBLIC ROAD (CR 57):	5280' +
ABOVEGROUND UTILITY:	5280' +
RAILROAD:	5280' +
PROPERTY LINE:	170' S



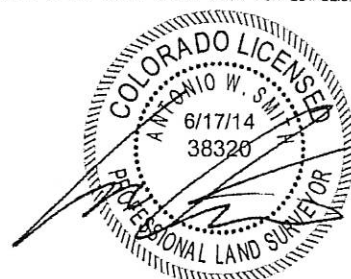
LEGEND		
⊙ PROPOSED WELL	⊙ BOTTOM HOLE	○ CALCULATED POSITION
⊙ EXISTING WELL	⊙ FOUND MONUMENT	

SURFACE HOLE LOCATION

LATITUDE: N 40.24774'
LONGITUDE: W 104.46692'
PDOP: 1.5
ELEVATION: 4869'
¼-¼: SW¼SW¼

BOTTOM HOLE LOCATION

LATITUDE: N 40.23363'
LONGITUDE: W 104.46882'

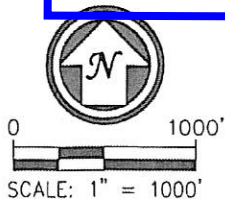
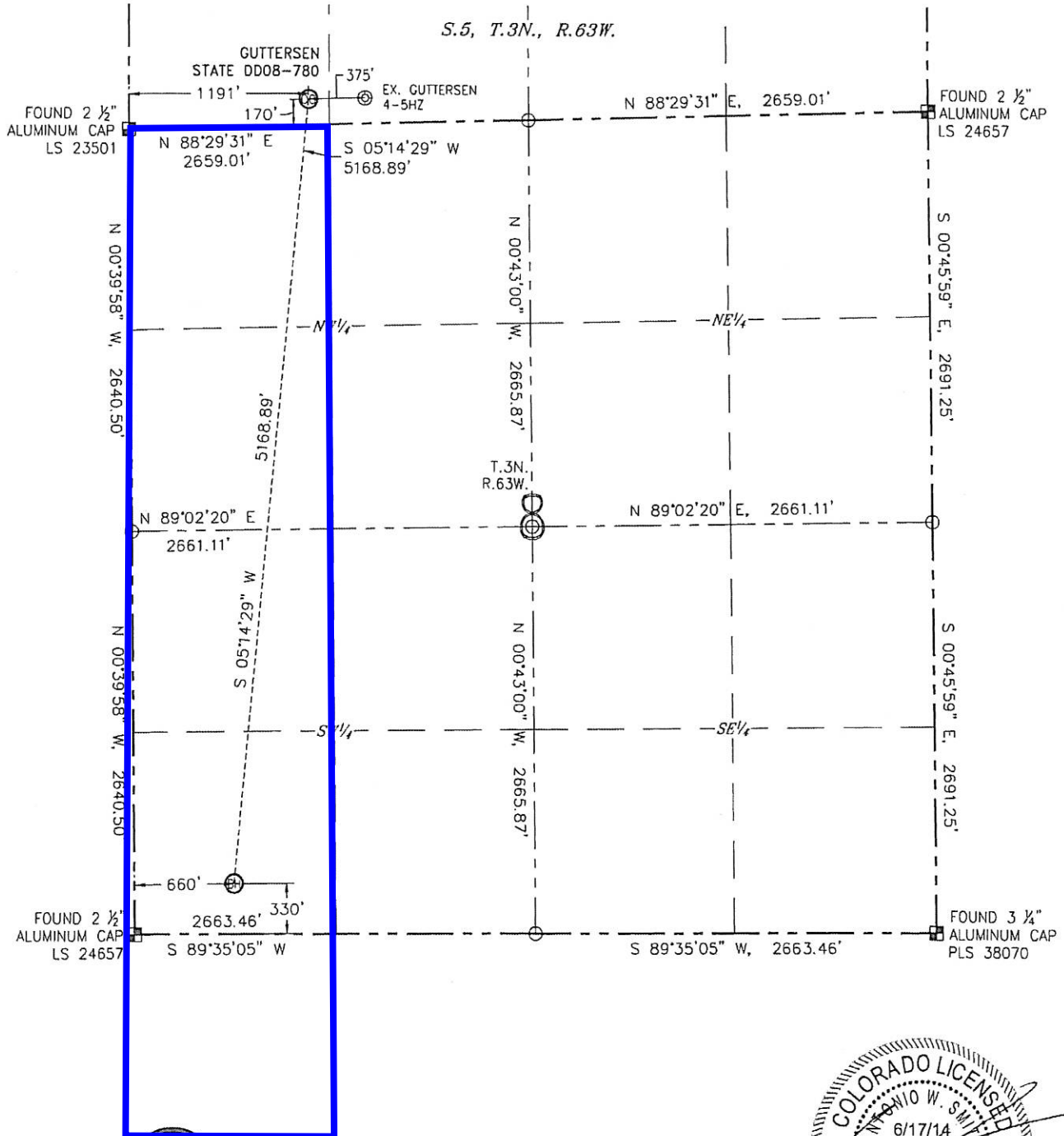


ANTONIO W. SMITH, PLS 38320
FOR AND ON BEHALF OF R&R ENGINEERS-SURVEYORS, INC. DATE: 06/17/2014
JOB NO.: NE14302.1

WELL LOCATION CERTIFICATE

GUTTERSEN STATE DD08-780
(SHEET 2 OF 2)

SECTION: 5
TOWNSHIP: 3N
RANGE: 63W



LEGEND

- ⊗ PROPOSED WELL
- ⊙ BOTTOM HOLE
- ▣ FOUND MONUMENT
- CALCULATED POSITION



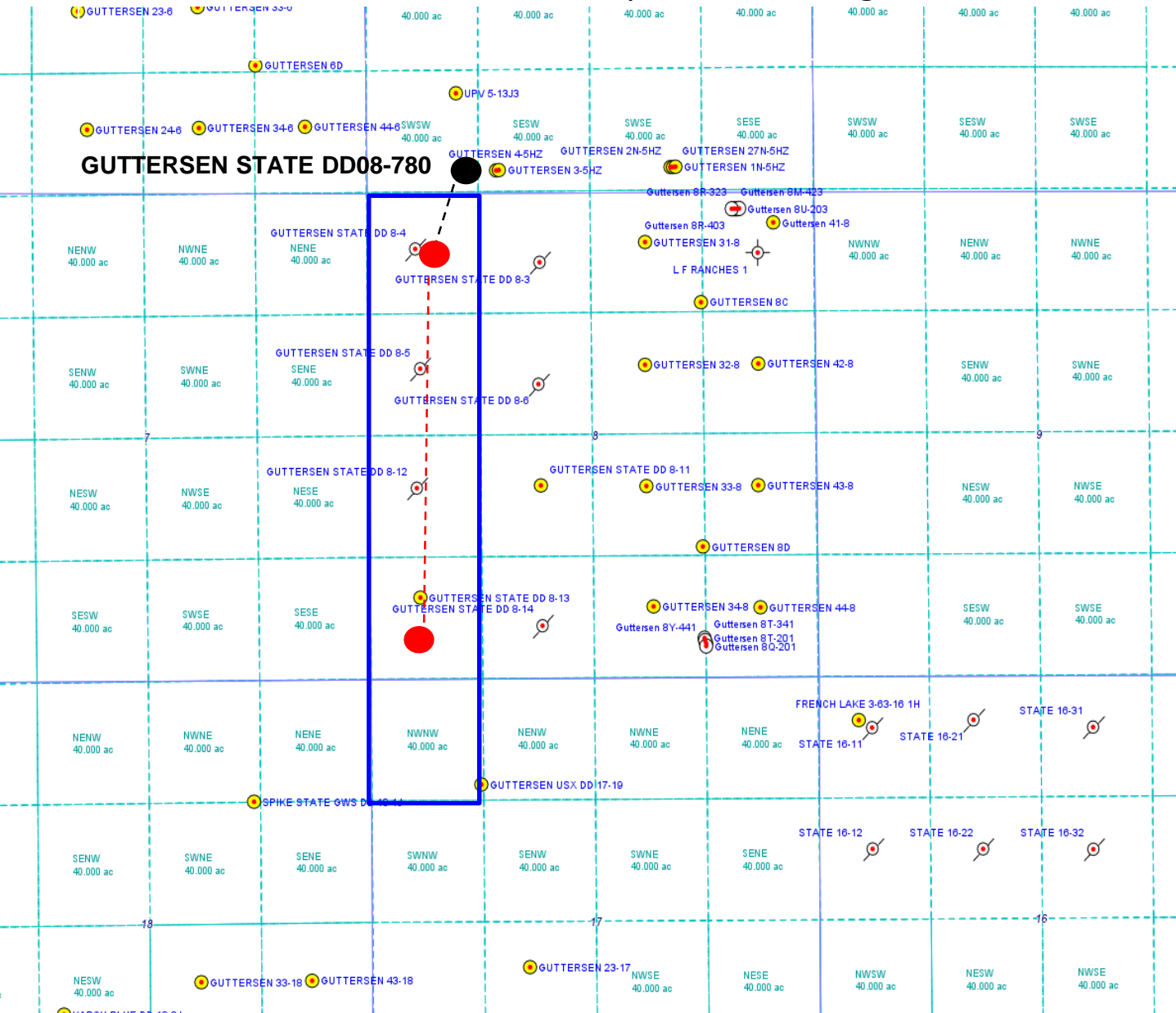
ANTONIO W. SMITH, PLS 38320
FOR AND ON BEHALF OF R&R DATE: 06/17/2014
ENGINEERS-SURVEYORS, INC. JOB NO.: NE14302.1

Guttersen State DD08-780

Proposed Spacing Unit – Noble Energy, Inc

W/2W/2 Section 8, Township 3 North, Range 63 West

NW/4NW/4 Section 17, Township 3 North, Range 63 West



Legend



Proposed 200.00± acre spacing unit



Bottom Hole Location