

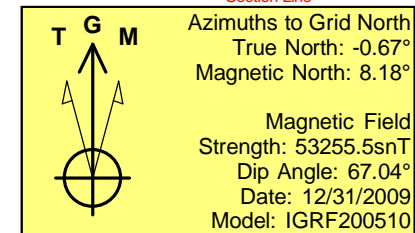
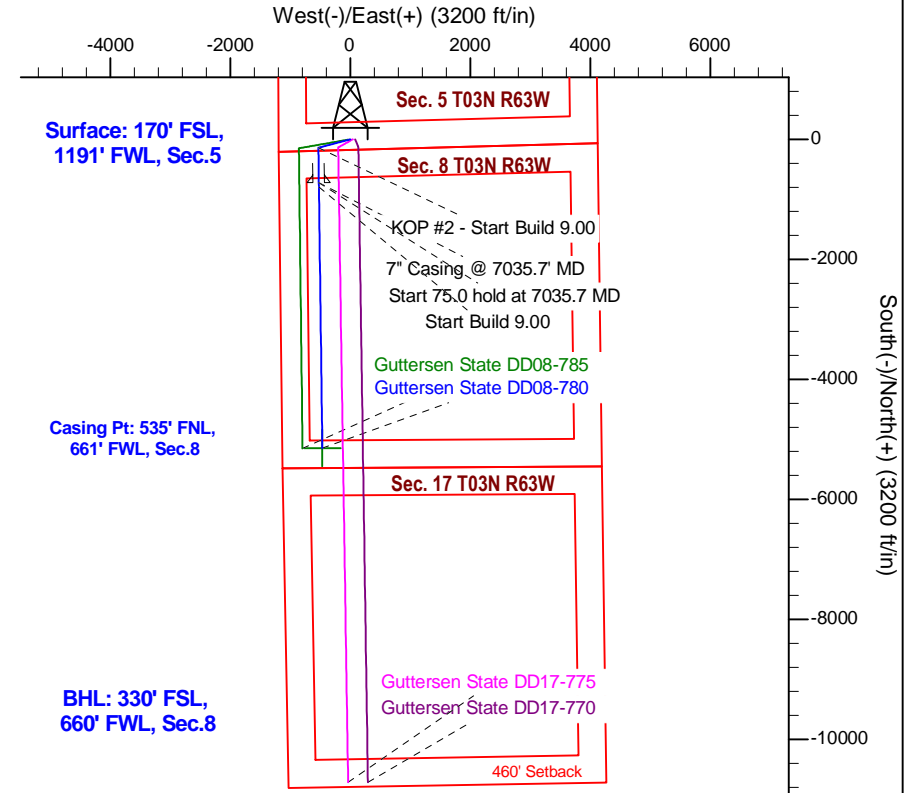
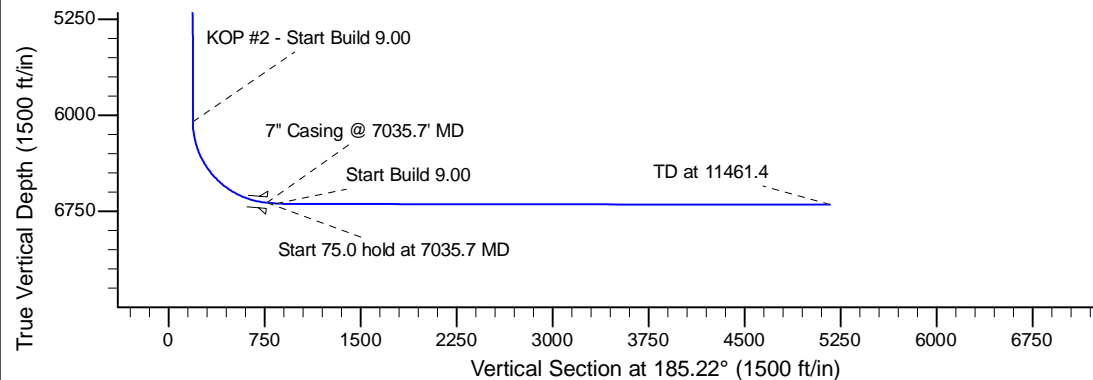
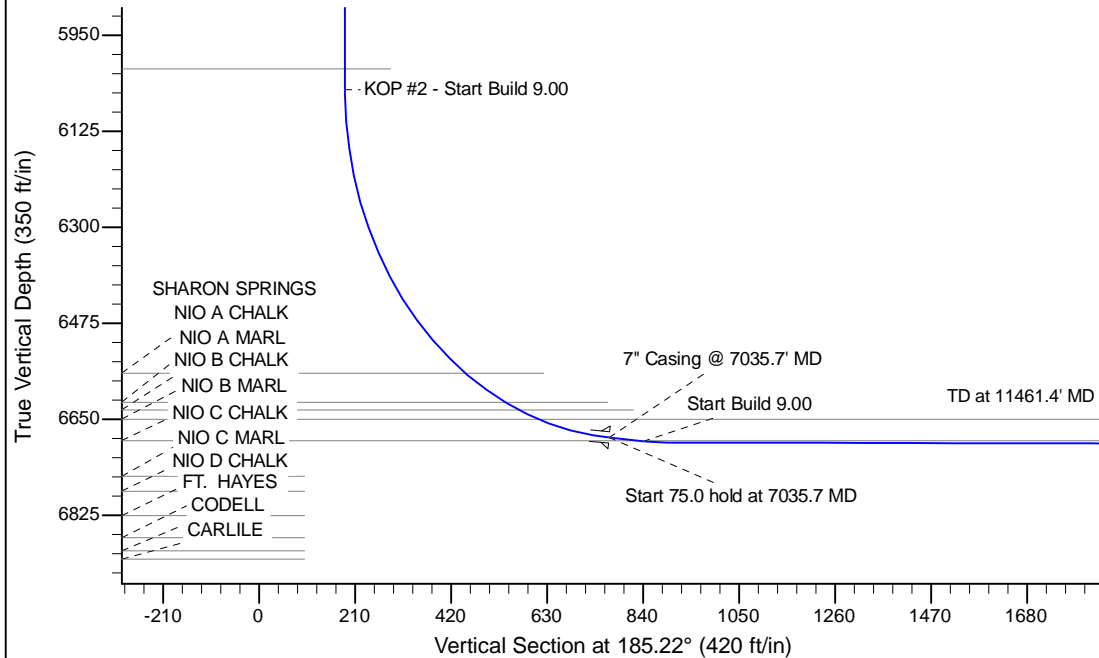
Project: Wattenberg Field
Site: DD (Sec.5-T03N-R63W) Weld County, CO
Well: Gutttersen State DD08-780
Wellbore: Original Drilling
Design: APD - Rev 0

Northern Region Drilling - Working

Geodetic System: US State Plane 1983
Datum: North American Datum 1983
Ellipsoid: GRS 1980
Zone: Colorado Northern Zone
System Datum: Mean Sea Level

SECTION DETAILS

Sec	MD	Inc	Azi	TVD	+N/-S	+E/-W	Dleg	TFace	VSec	Target
1	0.0	0.00	0.00	0.0	0.0	0.0	0.00	0.00	0.0	
2	1500.0	0.00	0.00	1500.0	0.0	0.0	0.00	0.00	0.0	
3	1952.6	9.05	255.34	1950.7	-9.0	-34.5	2.00	255.34	12.1	
4	5014.3	9.05	255.34	4974.3	-131.0	-500.5	0.00	0.00	176.0	
5	5466.9	0.00	0.00	5425.0	-140.0	-535.0	2.00	180.00	188.1	
6	6091.2	0.00	0.00	6049.3	-140.0	-535.0	0.00	0.00	188.1	
7	7035.7	85.00	179.26	6683.5	-721.1	-527.5	9.00	179.26	766.1	
8	7110.7	85.00	179.26	6690.1	-795.8	-526.6	0.00	0.00	840.4	
9	7165.1	89.90	179.26	6692.5	-850.2	-525.9	9.00	0.00	894.5	
10	11461.4	89.90	179.26	6700.0	-5146.1	-470.6	0.00	0.00	5167.6	Gutttersen State DD08-780 BHL 330'FSL, 660'FWL



WELL DETAILS: Gutttersen State DD08-780

Ground Level: 4869.0				
0.0	0.0	Northing	Easting	Latitude
0.0	0.0	1334773.17	3288363.16	40.247740
				Longitude
				-104.466920

Plan: APD - Rev 0 (Gutttersen State DD08-780/Original Drilling)

Created By: Shailey Jewell Date: 14:05, January 05 2015

OK to submit with 2A as per Noble Drilling
1/05/2015 2:59