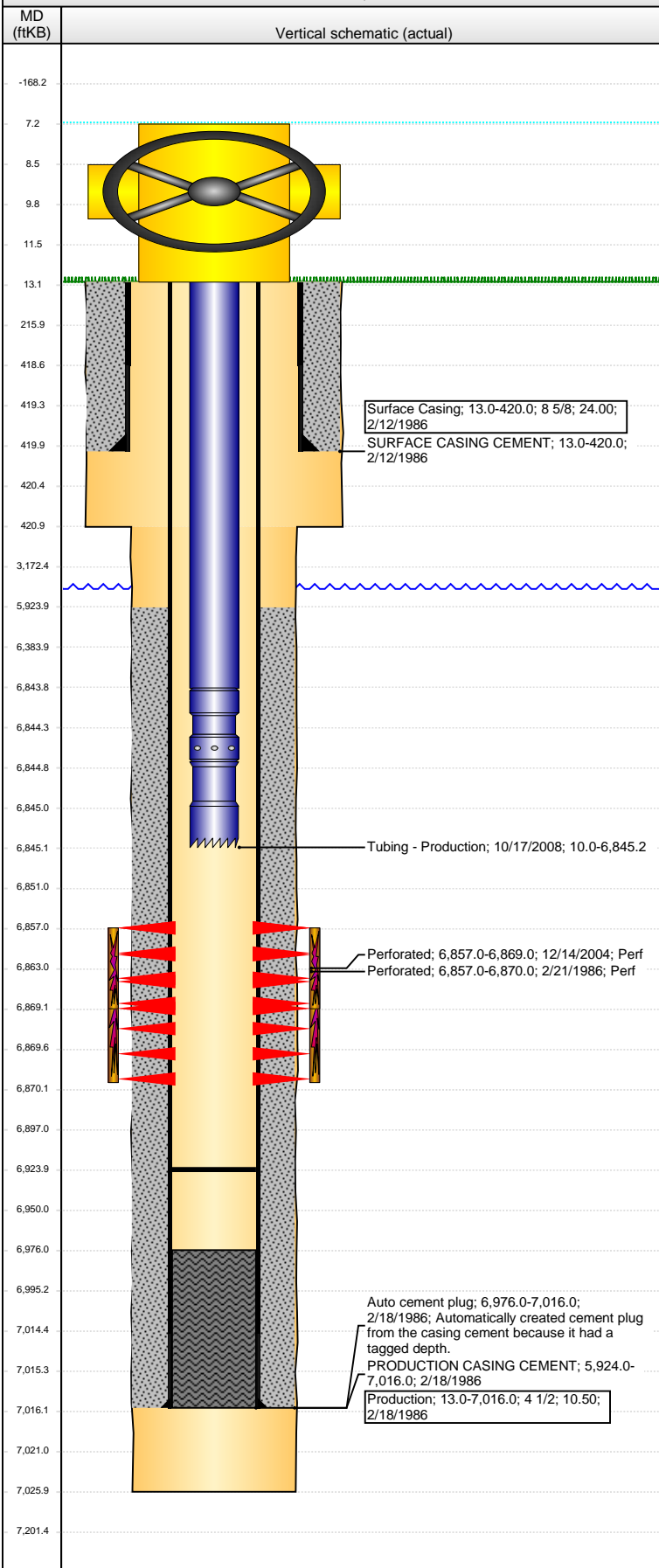


Well Name: RAY-GLO 04

VERTICAL - ORIGINAL HOLE, 9/4/2015 9:23:00 AM



Well Header									
API 05-123-12988		Business Unit DJ BASIN		District 15		Well Config VERTICAL			
Original KB Elevation (ft) 4,720.00		KB - GL / MSL (ftKB) 13.00		Spud Date 2/12/1986		P & A Date			
Comment									
Directions To Well 392 / RD 57 - N.5, E.45, NE INTO									
Congressional Location									
Quarter 1	Quarter 2	Quarter 3 SE	Quarter 4 NW	Section 14	Township 6 N	Twtnsh N...	Range 64	Rng E/W Dir W	
Bottom Hole Location									
North-South Distance (ft)			From N or S Line		East-West Distance (ft)			From E or W Line	
Plug Back Total Depths									
Date	Depth (ftKB)	Method			Com				
2/18/1986	6,976.0	CASED HOLE LOG							
2/18/1986	7,007.0	CASING TALLY							
10/17/2008	6,924.0	TAG							
Wellbore Sections									
Section Des			Size (in)	Act Top, MD (ftKB)		Act Btm, MD (ftKB)			
SURFACE			12 1/4	13.0		421.0			
PRODUCTION			7 7/8	421.0		7,026.0			
Zone Statuses									
Zone Name	Status Date	Status	Fluid Type	Job	Prod Method				
CODELL	4/9/1986	PR	Gas	DRILLING/CO...					
CODELL	9/1/2014	PR	Gas	DRILLING/CO...					
Casing Strings									
Surface Casing, 420.0ftKB									
Casing Description Surface Casing		Run Date 2/12/1986	OD (in) 8 5/8	Wt/Len (l...) 24.00	Grade	Top, MD (ft...) 13.0	MD (ftKB) 420.0		
Production, 7,016.0ftKB									
Casing Description Production		Run Date 2/18/1986	OD (in) 4 1/2	Wt/Len (l...) 10.50	Grade	Top, MD (ft...) 13.0	MD (ftKB) 7,016.0		
Cement									
Description SURFACE CASING CEMENT					Top Depth (ftKB) 13.0		Bottom Depth (ftKB) 420.0		
Description PRODUCTION CASING CEMENT					Top Depth (ftKB) 5,924.0		Bottom Depth (ftKB) 7,016.0		
Tubing Strings									
Tubing Description Tubing - Production		Run Date 12/22/2004	String... 4	ID (in) 2 3/8	Wt (lb/ft) 1.995	Grade 4.70 J-55	Len (ft) 6,830.00	Set De...	
Tubing Description Tubing - Production		Run Date 10/17/2008	String... 8	ID (in) 2 3/8	Wt (lb/ft) 1.995	Grade 4.70 J-55	Len (ft) 6,835.24	Set De...	
Tubing Components									
Item Des	OD (in)	Wt (lb/ft)	Grade	Jts	Len (ft)	Btm (ftKB)	Btm (TVD) (ftKB)		
Tubing	2 3/8	4.70	J-55	212	6,833.74	6,843.7			
Pump Seating Nipple	2 3/8	0.00	0	1	1.00	6,844.7			
Notched collar	2 3/8	0.00	0	1	0.50	6,845.2			
Perforation Data									
Zone		Bnch/St g	Entered Shot Total	Top (ftKB)	Btm (ftKB)	Date			
CODELL, ORIGINAL HOLE			48	6,857.00	6,869.00	12/14/2004			
CODELL, ORIGINAL HOLE			14	6,857.00	6,870.00	2/21/1986			
Stimulations & Treatments									
Date 3/11/1986	Zone CODELL, ORIGINAL HOLE			Primary Job Type DRILLING/COMPLETION - ORIGINAL					
Technical Result			Tech Result Details			Tech Result Note			
Comment									

Well Name: RAY-GLO 04

VERTICAL - ORIGINAL HOLE, 9/4/2015 9:23:02 AM

Stimulations & Treatments

Date	Zone	Primary Job Type
12/17/2004	CODELL, ORIGINAL HOLE	RE-FRAC
Technical Result	Tech Result Details	Tech Result Note
Comment		

Other In Hole

Run Date	Des	OD (in)	Top (ftKB)	Btm (ftKB)

Logs

Date	Type	Top, MD (ftKB)	Btm, MD (ftKB)
2/18/1986	Compensated Density	3,500.0	7,022.0
2/18/1986	Induction	420.0	7,022.0
2/21/1986	Cement Bond	5,380.0	6,970.0
4/15/2015	GYRO	13.0	6,800.0

