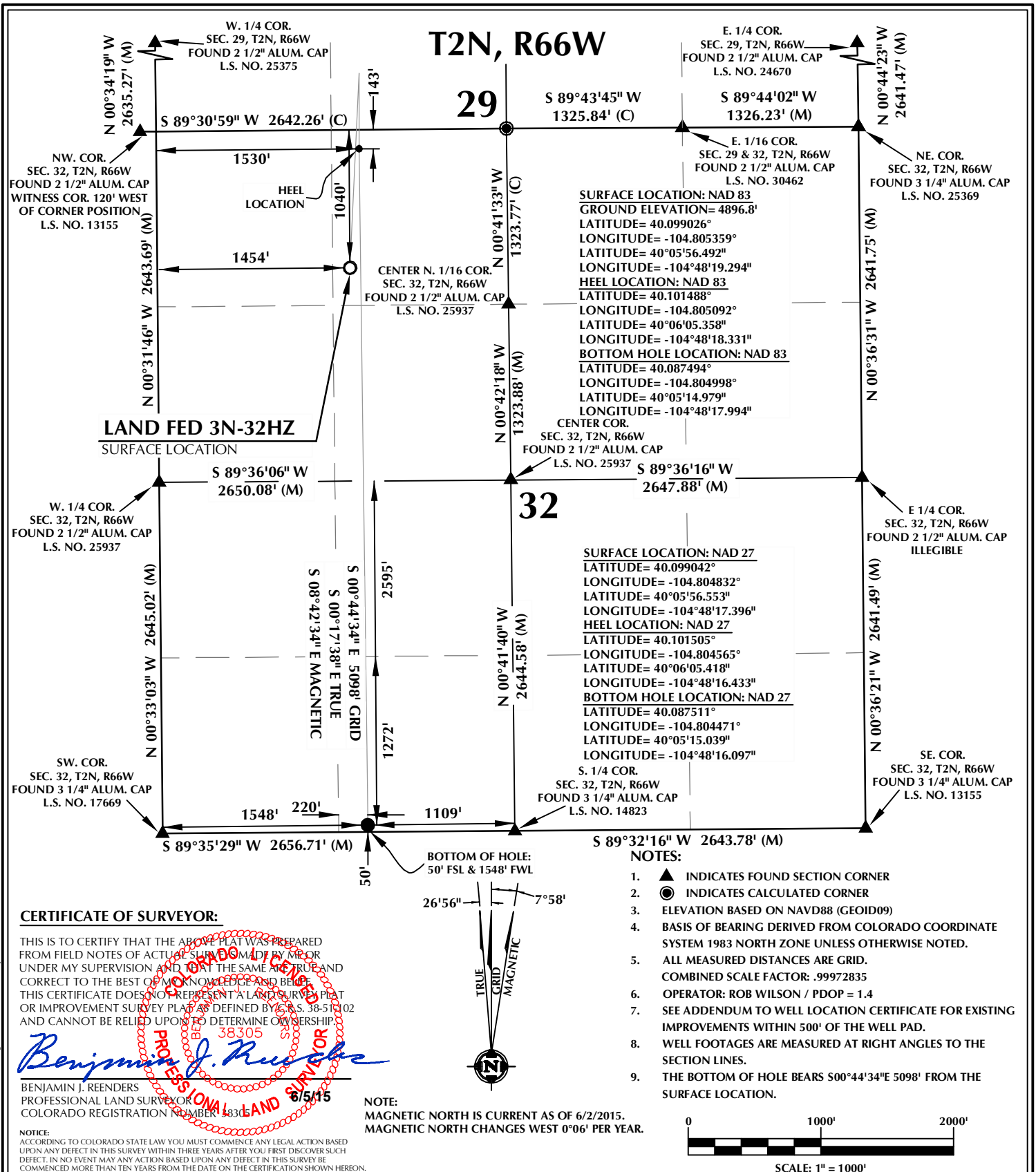


K:\ADARKO\2013\113 COLORADO T2N66W SEC32\PLATSLAND FED 13N-32HZ.dwg, 6/10/2015 11:45:54 PM, jake



WELL PAD - LAND FED 13N-32HZ

LAND FED 3N-32HZ
WELL LOCATION CERTIFICATE
1040' FNL & 1454' FWL NENW (SURFACE)
143' FNL & 1530' FWL NENW (HEEL)
50' FSL & 1548' FWL SESW (BOTTOM)
LOCATED IN SECTION 32
T2N, R66W, 6TH P.M.
WELD COUNTY, COLORADO

**Kerr-McGee Oil &
Gas Onshore L.P.**
1099 18th Street
Denver, Colorado 80202



CONSULTING, LLC

SHERIDAN OFFICE
1095 Saberton Avenue
Sheridan, Wyoming 82801
Phone 307-674-0609

LOVELAND OFFICE
1635 Foxtrail Drive, Suite 204
Loveland, Colorado 80538
Phone 970-776-4331

DRAFTED BY:	MDZ	CHECKED BY:	BJR
DATE DRAFTED:	6/5/15	DATE SURVEYED:	3/24/15
REVISED:		FILE NAME:	13-113