



Kerr-McGee Oil & Gas Onshore LP

A subsidiary of Anadarko Petroleum Corporation

1099 18th Street
Denver, CO 80202
720-929-6000

August 30, 2015

Matt Lepore
Director, Colorado Oil and Gas Conservation Commission
Department of Natural Resources
The Chancery Building
1120 Lincoln Street, Suite 801
Denver, CO 80203

Re: **30 Day Certification Letter - 318A.e**
LAND FED 35N-29HZ (Doc No. 400854585)
Township 2 North, Range 66 West
Section 32: NENW
Unit Acreage: 480 acres
Unit Spacing: 02N 66W SEC 20 S2SW
02N 66W SEC 29 W2
02N 66W SEC 32 N2NW
Weld County, Colorado

Dear Director Lepore:

Kerr-McGee Oil and Gas Onshore LP ("KMG") hereby certifies that a thirty (30) day notice has been given by certified mail to all mineral owners in the proposed wellbore spacing unit. We have not received any objections to such well location, proposed spacing unit, or additional producing formation. KMG hereby respectfully requests approval of this boundary well.

If you have any questions or issues regarding this permit, please contact our office.

Sincerely,

Kerr-McGee Oil and Gas Onshore LP

A handwritten signature in blue ink that reads 'RPowers'.

Ronett Powers
Regulatory Analyst II

Enclosure

T2N, R66W

E. 1/16 COR.
SEC. 29 & 32, T2N, R66W
FOUND 2 1/2" ALUM. CAP
L.S. NO. 30462

MATCH LINE
SEE SHEET 1B

WELL BORE
CONTINUES INTO
SECTION 29

S 89°43'45" W
1325.84' (C)

S 89°44'02" W
1326.23' (M)

NE. COR.
SEC. 32, T2N, R66W
FOUND 3 1/4" ALUM. CAP
L.S. NO. 25369

SURFACE LOCATION: NAD 83
GROUND ELEVATION= 4896.6'
LATITUDE= 40.099025°
LONGITUDE= -104.805306°
LATITUDE= 40°05'56.491"
LONGITUDE= -104°48'19.101"
HEEL LOCATION: NAD 83
LATITUDE= 40.101939°
LONGITUDE= -104.804721°
LATITUDE= 40°06'06.979"
LONGITUDE= -104°48'16.996"
BOTTOM HOLE LOCATION: NAD 83
LATITUDE= 40.116341°
LONGITUDE= -104.804589°
LATITUDE= 40°06'58.828"
LONGITUDE= -104°48'16.519"

CENTER N. 1/16 COR.
SEC. 32, T2N, R66W
FOUND 2 1/2" ALUM. CAP
L.S. NO. 25937

LAND FED 35N-29HZ
SURFACE LOCATION

32

SURFACE LOCATION: NAD 27
LATITUDE= 40.099042°
LONGITUDE= -104.804779°
LATITUDE= 40°05'56.551"
LONGITUDE= -104°48'17.203"
HEEL LOCATION: NAD 27
LATITUDE= 40.101955°
LONGITUDE= -104.804194°
LATITUDE= 40°06'07.040"
LONGITUDE= -104°48'15.098"
BOTTOM HOLE LOCATION: NAD 27
LATITUDE= 40.116358°
LONGITUDE= -104.804062°
LATITUDE= 40°06'58.889"
LONGITUDE= -104°48'14.622"

NW. COR.
SEC. 32, T2N, R66W
FOUND 2 1/2" ALUM. CAP
WITNESS COR. 120' WEST
OF CORNER POSITION
L.S. NO. 13155

W. 1/4 COR.
SEC. 32, T2N, R66W
FOUND 2 1/2" ALUM. CAP
L.S. NO. 25937

SW. COR.
SEC. 32, T2N, R66W
FOUND 3 1/4" ALUM. CAP
L.S. NO. 17669

CENTER COR.
SEC. 32, T2N, R66W
FOUND 2 1/2" ALUM. CAP
L.S. NO. 25937

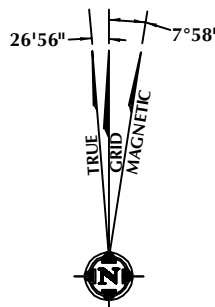
S. 1/4 COR.
SEC. 32, T2N, R66W
FOUND 3 1/4" ALUM. CAP
L.S. NO. 14823

E 1/4 COR.
SEC. 32, T2N, R66W
FOUND 2 1/2" ALUM. CAP
ILLEGIBLE

SE. COR.
SEC. 32, T2N, R66W
FOUND 3 1/4" ALUM. CAP
L.S. NO. 13155

NOTES:

- ▲ INDICATES FOUND SECTION CORNER
- INDICATES CALCULATED CORNER
- ELEVATION BASED ON NAVD88 (GEOID09)
- BASIS OF BEARING DERIVED FROM COLORADO COORDINATE SYSTEM 1983 NORTH ZONE UNLESS OTHERWISE NOTED.
- ALL MEASURED DISTANCES ARE GRID. COMBINED SCALE FACTOR: .99972835
- OPERATOR: ROB WILSON / PDOP = 1.4
- SEE ADDENDUM TO WELL LOCATION CERTIFICATE FOR EXISTING IMPROVEMENTS WITHIN 500' OF THE WELL PAD.
- WELL FOOTAGES ARE MEASURED AT RIGHT ANGLES TO THE SECTION LINES.
- THE BOTTOM OF HOLE BEARS N00°02'42"W 5247' FROM THE SURFACE LOCATION.



NOTE:
MAGNETIC NORTH IS CURRENT AS OF 6/2/2015.
MAGNETIC NORTH CHANGES WEST 0°06' PER YEAR.



SCALE: 1" = 1000'

CERTIFICATE OF SURVEYOR:

THIS IS TO CERTIFY THAT THE ABOVE PLAT WAS PREPARED FROM FIELD NOTES OF ACTUAL SURVEY MADE BY ME OR UNDER MY SUPERVISION AND THAT THE SAME ARE TRUE AND CORRECT TO THE BEST OF MY KNOWLEDGE AND BELIEF. THIS CERTIFICATE DOES NOT REPRESENT A LAND SURVEY PLAT OR IMPROVEMENT SURVEY PLAT AS DEFINED BY C.S. 38-513-02 AND CANNOT BE RELIED UPON TO DETERMINE OWNERSHIP.

Benjamin J. Reenders
PROFESSIONAL LAND SURVEYOR
6/5/15

BENJAMIN J. REENDERS
PROFESSIONAL LAND SURVEYOR
COLORADO REGISTRATION NUMBER 14336

NOTICE:
ACCORDING TO COLORADO STATE LAW YOU MUST COMMENCE ANY LEGAL ACTION BASED UPON ANY DEFECT IN THIS SURVEY WITHIN THREE YEARS AFTER YOU FIRST DISCOVER SUCH DEFECT. IN NO EVENT MAY ANY ACTION BASED UPON ANY DEFECT IN THIS SURVEY BE COMMENCED MORE THAN TEN YEARS FROM THE DATE ON THE CERTIFICATION SHOWN HEREON.

WELL PAD - LAND FED 13N-32HZ

LAND FED 35N-29HZ
WELL LOCATION CERTIFICATE
1040' FNL & 1469' FWL NENW (SURFACE)
LOCATED IN SECTION 32
21' FSL & 1634' FWL SESW (HEEL)
1' FNL & 1682' FWL NENW (BOTTOM)
LOCATED IN SECTION 29
T2N, R66W, 6TH P.M.
WELD COUNTY, COLORADO

Kerr-McGee Oil &
Gas Onshore L.P.
1099 18th Street
Denver, Colorado 80202



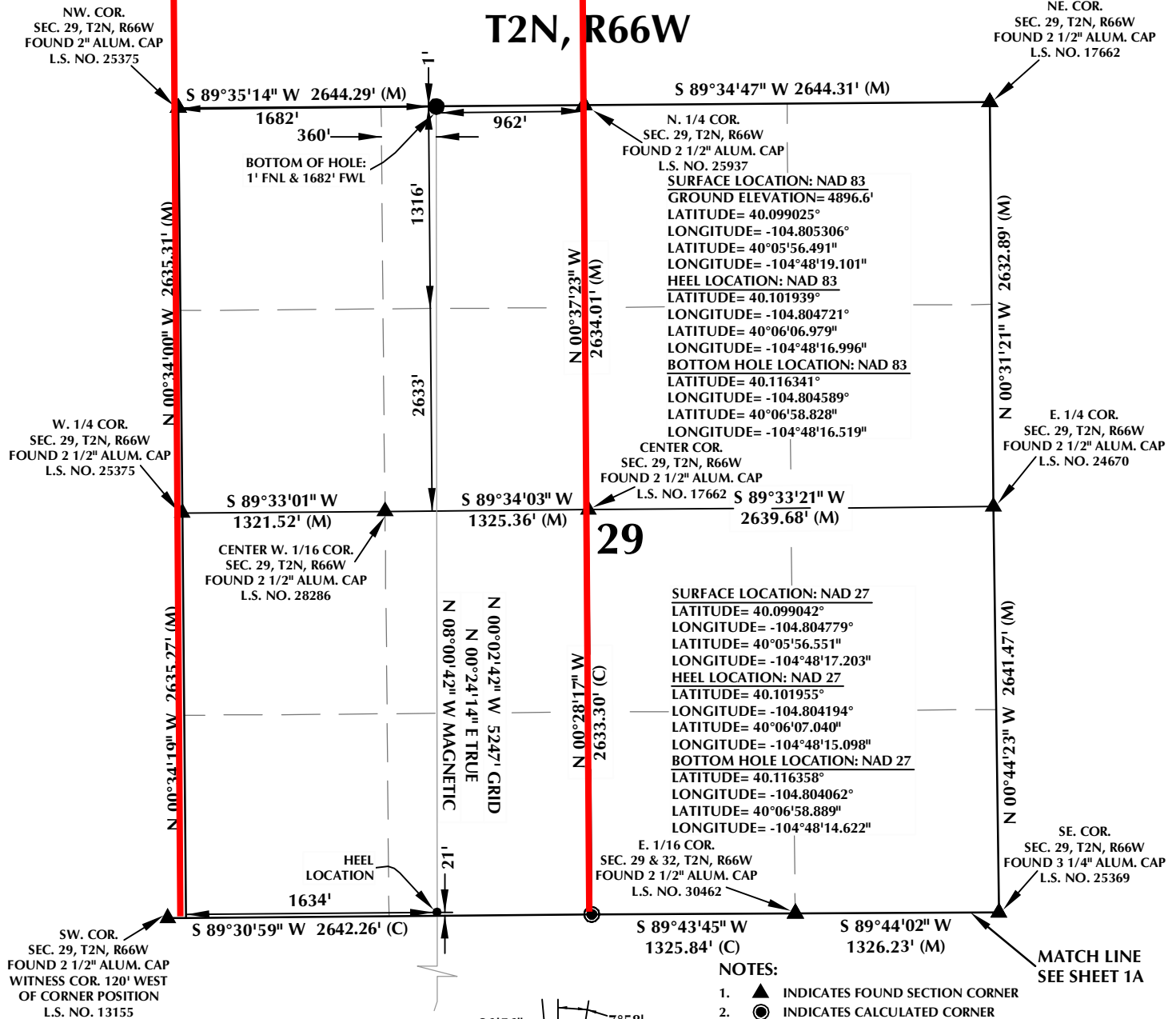
CONSULTING, LLC

SHERIDAN OFFICE
1095 Saberton Avenue
Sheridan, Wyoming 82801
Phone 307-674-0609

LOVELAND OFFICE
1635 Foxtrail Drive, Suite 204
Loveland, Colorado 80538
Phone 970-776-4331

DRAFTED BY:	MDZ	CHECKED BY:	BJR	SHEET NO:
DATE DRAFTED:	6/5/15	DATE SURVEYED:	3/24/15	1A
REVISED:		FILE NAME:	13-113	1A OF 1

T2N, R66W



CERTIFICATE OF SURVEYOR:

THIS IS TO CERTIFY THAT THE ABOVE PLAT WAS PREPARED FROM FIELD NOTES OF ACTUAL SURVEY MADE BY ME OR UNDER MY SUPERVISION AND THAT THE SAME ARE TRUE AND CORRECT TO THE BEST OF MY KNOWLEDGE AND BELIEF. THIS CERTIFICATE DOES NOT REPRESENT A LAND SURVEY PLAT OR IMPROVEMENT SURVEY PLAT AS DEFINED BY C.S. 38-51-102 AND CANNOT BE RELIED UPON TO DETERMINE OWNERSHIP.

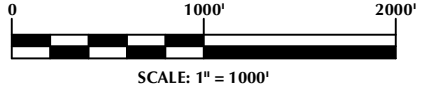
Benjamin J. Reenders
 BENJAMIN J. REENDERS
 PROFESSIONAL LAND SURVEYOR
 COLORADO REGISTRATION NUMBER 48305

NOTICE:
 ACCORDING TO COLORADO STATE LAW YOU MUST COMMENCE ANY LEGAL ACTION BASED UPON ANY DEFECT IN THIS SURVEY WITHIN THREE YEARS AFTER YOU FIRST DISCOVER SUCH DEFECT. IN NO EVENT MAY ANY ACTION BASED UPON ANY DEFECT IN THIS SURVEY BE COMMENCED MORE THAN TEN YEARS FROM THE DATE ON THE CERTIFICATION SHOWN HEREON.

NOTE:
 MAGNETIC NORTH IS CURRENT AS OF 6/2/2015.
 MAGNETIC NORTH CHANGES WEST 0°06' PER YEAR.

NOTES:

- ▲ INDICATES FOUND SECTION CORNER
- INDICATES CALCULATED CORNER
- ELEVATION BASED ON NAVD88 (GEOID09)
- BASIS OF BEARING DERIVED FROM COLORADO COORDINATE SYSTEM 1983 NORTH ZONE UNLESS OTHERWISE NOTED.
- ALL MEASURED DISTANCES ARE GRID. COMBINED SCALE FACTOR: .99972835
- OPERATOR: ROB WILSON / PDOP = 1.4
- SEE ADDENDUM TO WELL LOCATION CERTIFICATE FOR EXISTING IMPROVEMENTS WITHIN 500' OF THE WELL PAD.
- WELL FOOTAGES ARE MEASURED AT RIGHT ANGLES TO THE SECTION LINES.
- THE BOTTOM OF HOLE BEARS N00°02'42"W 5247' FROM THE SURFACE LOCATION.



WELL PAD - LAND FED 13N-32HZ

LAND FED 35N-29HZ
 WELL LOCATION CERTIFICATE
 1040' FNL & 1469' FWL NENW (SURFACE)
 LOCATED IN SECTION 32
 21' FSL & 1634' FWL SESW (HEEL)
 1' FNL & 1682' FWL NENW (BOTTOM)
 LOCATED IN SECTION 29
 T2N, R66W, 6TH P.M.
 WELD COUNTY, COLORADO

**Kerr-McGee Oil &
 Gas Onshore L.P.**
 1099 18th Street
 Denver, Colorado 80202



CONSULTING, LLC

SHERIDAN OFFICE 1095 Saberton Avenue
 Sheridan, Wyoming 82801
 Phone 307-674-0609
 LOVELAND OFFICE 1635 Foxtrail Drive, Suite 204
 Loveland, Colorado 80538
 Phone 970-776-4331

DRAFTED BY:	MDZ	CHECKED BY:	BJR	SHEET NO:
DATE DRAFTED:	6/5/15	DATE SURVEYED:	3/24/15	1B
REVISED:		FILE NAME:	13-113	1B OF 1