

K:\ADARKO\2013\113 COLORADO T2N R66W SEC 32 PLATS\LAND FED 13N-32HZ.dwg, 6/10/2015 11:46:14 PM, jake

T2N, R66W

E. 1/16 COR.  
SEC. 29 & 32, T2N, R66W  
FOUND 2 1/2" ALUM. CAP  
L.S. NO. 30462

MATCH LINE  
SEE SHEET 1B

WELL BORE  
CONTINUES INTO  
SECTION 29

S 89°43'45" W  
1325.84' (C)

S 89°44'02" W  
1326.23' (M)

NE COR.  
SEC. 32, T2N, R66W  
FOUND 3 1/4" ALUM. CAP  
L.S. NO. 25369

SURFACE LOCATION: NAD 83  
GROUND ELEVATION= 4896.6'  
LATITUDE= 40.099025°  
LONGITUDE= -104.805306°  
LATITUDE= 40°05'56.491"  
LONGITUDE= -104°48'19.101"  
HEEL LOCATION: NAD 83  
LATITUDE= 40.101939°  
LONGITUDE= -104.804721°  
LATITUDE= 40°06'06.979"  
LONGITUDE= -104°48'16.996"  
BOTTOM HOLE LOCATION: NAD 83  
LATITUDE= 40.116341°  
LONGITUDE= -104.804589°  
LATITUDE= 40°06'58.828"  
LONGITUDE= -104°48'16.519"

CENTER N. 1/16 COR.  
SEC. 32, T2N, R66W  
FOUND 2 1/2" ALUM. CAP  
L.S. NO. 25937

LAND FED 35N-29HZ  
SURFACE LOCATION

NW COR.  
SEC. 32, T2N, R66W  
FOUND 2 1/2" ALUM. CAP  
WITNESS COR. 120' WEST  
OF CORNER POSITION  
L.S. NO. 13155

1469'

N 00°31'46" W 2643.69' (M)

N 00°41'33" W 1323.77' (C)

N 00°42'18" W 1323.88' (M)

N 00°36'31" W 2641.75' (M)

W. 1/4 COR.  
SEC. 32, T2N, R66W  
FOUND 2 1/2" ALUM. CAP  
L.S. NO. 25937

CENTER COR.  
SEC. 32, T2N, R66W  
FOUND 2 1/2" ALUM. CAP  
L.S. NO. 25937

32

S 89°36'16" W  
2647.88' (M)

SURFACE LOCATION: NAD 27  
LATITUDE= 40.099042°  
LONGITUDE= -104.804779°  
LATITUDE= 40°05'56.551"  
LONGITUDE= -104°48'17.203"  
HEEL LOCATION: NAD 27  
LATITUDE= 40.101955°  
LONGITUDE= -104.804194°  
LATITUDE= 40°06'07.040"  
LONGITUDE= -104°48'15.098"  
BOTTOM HOLE LOCATION: NAD 27  
LATITUDE= 40.116358°  
LONGITUDE= -104.804062°  
LATITUDE= 40°06'58.889"  
LONGITUDE= -104°48'14.622"

E 1/4 COR.  
SEC. 32, T2N, R66W  
FOUND 2 1/2" ALUM. CAP  
ILLEGIBLE

N 00°36'21" W 2641.49' (M)

SW COR.  
SEC. 32, T2N, R66W  
FOUND 3 1/4" ALUM. CAP  
L.S. NO. 17669

S. 1/4 COR.  
SEC. 32, T2N, R66W  
FOUND 3 1/4" ALUM. CAP  
L.S. NO. 14823

SE COR.  
SEC. 32, T2N, R66W  
FOUND 3 1/4" ALUM. CAP  
L.S. NO. 13155

S 89°35'29" W 2656.71' (M)

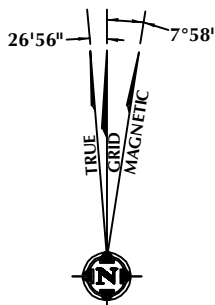
S 89°32'16" W 2643.78' (M)

### CERTIFICATE OF SURVEYOR:

THIS IS TO CERTIFY THAT THE ABOVE PLAT WAS PREPARED FROM FIELD NOTES OF ACTUAL SURVEY MADE BY ME OR UNDER MY SUPERVISION AND THAT THE SAME ARE TRUE AND CORRECT TO THE BEST OF MY KNOWLEDGE AND BELIEF. THIS CERTIFICATE DOES NOT REPRESENT A LAND SURVEY PLAT OR IMPROVEMENT SURVEY PLAT AS DEFINED BY C.S. 38-513-02 AND CANNOT BE RELIED UPON TO DETERMINE OWNERSHIP.

*Benjamin J. Reenders*  
BENJAMIN J. REENDERS  
PROFESSIONAL LAND SURVEYOR  
COLORADO REGISTRATION NUMBER 14336  
6/5/15

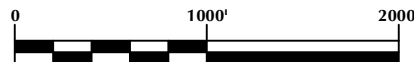
NOTICE:  
ACCORDING TO COLORADO STATE LAW YOU MUST COMMENCE ANY LEGAL ACTION BASED UPON ANY DEFECT IN THIS SURVEY WITHIN THREE YEARS AFTER YOU FIRST DISCOVER SUCH DEFECT. IN NO EVENT MAY ANY ACTION BASED UPON ANY DEFECT IN THIS SURVEY BE COMMENCED MORE THAN TEN YEARS FROM THE DATE ON THE CERTIFICATION SHOWN HEREON.



NOTE:  
MAGNETIC NORTH IS CURRENT AS OF 6/2/2015.  
MAGNETIC NORTH CHANGES WEST 0°06' PER YEAR.

### NOTES:

- ▲ INDICATES FOUND SECTION CORNER
- INDICATES CALCULATED CORNER
- ELEVATION BASED ON NAVD88 (GEOID09)
- BASIS OF BEARING DERIVED FROM COLORADO COORDINATE SYSTEM 1983 NORTH ZONE UNLESS OTHERWISE NOTED.
- ALL MEASURED DISTANCES ARE GRID.  
COMBINED SCALE FACTOR: .99972835
- OPERATOR: ROB WILSON / PDOP = 1.4
- SEE ADDENDUM TO WELL LOCATION CERTIFICATE FOR EXISTING IMPROVEMENTS WITHIN 500' OF THE WELL PAD.
- WELL FOOTAGES ARE MEASURED AT RIGHT ANGLES TO THE SECTION LINES.
- THE BOTTOM OF HOLE BEARS N00°02'42"W 5247' FROM THE SURFACE LOCATION.



SCALE: 1" = 1000'

### WELL PAD - LAND FED 13N-32HZ

LAND FED 35N-29HZ  
WELL LOCATION CERTIFICATE  
1040' FNL & 1469' FWL NENW (SURFACE)  
LOCATED IN SECTION 32  
21' FSL & 1634' FWL SESW (HEEL)  
1' FNL & 1682' FWL NENW (BOTTOM)  
LOCATED IN SECTION 29  
T2N, R66W, 6TH P.M.  
WELD COUNTY, COLORADO

Kerr-McGee Oil &  
Gas Onshore L.P.  
1099 18th Street  
Denver, Colorado 80202



### CONSULTING, LLC

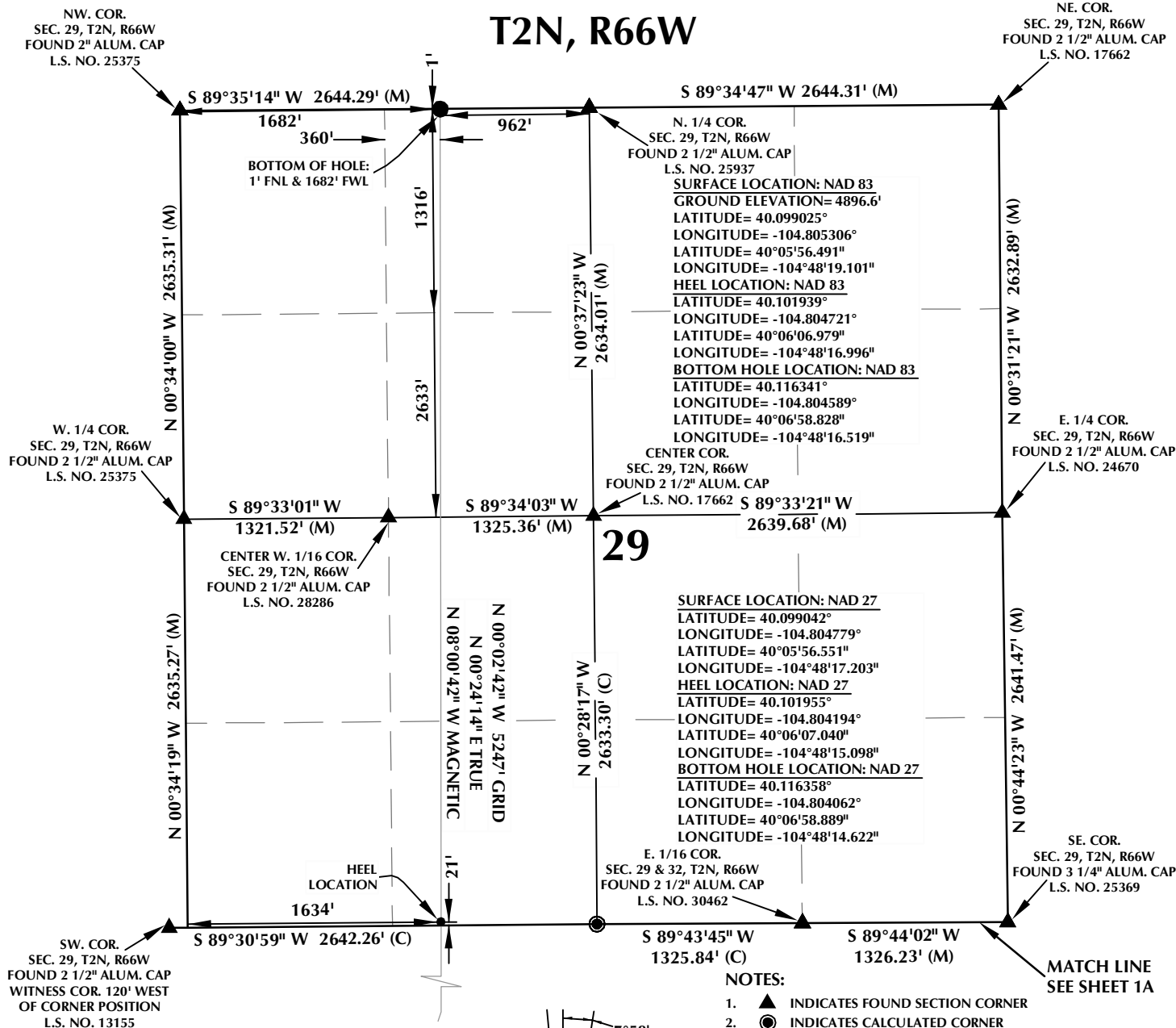
SHERIDAN OFFICE  
1095 Saberton Avenue  
Sheridan, Wyoming 82801  
Phone 307-674-0609

LOVELAND OFFICE  
1635 Foxtrail Drive, Suite 204  
Loveland, Colorado 80538  
Phone 970-776-4331

DRAFTED BY:	MDZ	CHECKED BY:	BJR	SHEET NO:
DATE DRAFTED:	6/5/15	DATE SURVEYED:	3/24/15	1A
REVISED:		FILE NAME:	13-113	1A OF 1

K:\AMADARKO\2013\113 COLORADO T2N66W SEC32\PLAN\LAND FED 13N-32HZ.dwg, 6/11/2015 7:35:16 PM, Ben

# T2N, R66W



## CERTIFICATE OF SURVEYOR:

THIS IS TO CERTIFY THAT THE ABOVE PLAT WAS PREPARED FROM FIELD NOTES OF ACTUAL SURVEY MADE BY ME OR UNDER MY SUPERVISION AND THAT THE SAME ARE TRUE AND CORRECT TO THE BEST OF MY KNOWLEDGE AND BELIEF. THIS CERTIFICATE DOES NOT REPRESENT A LAND SURVEY PLAT OR IMPROVEMENT SURVEY PLAT AS DEFINED BY C.S. 38-51-102 AND CANNOT BE RELIED UPON TO DETERMINE OWNERSHIP.

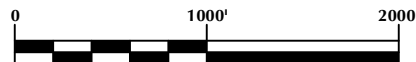
*Benjamin J. Reenders*  
BENJAMIN J. REENDERS  
PROFESSIONAL LAND SURVEYOR  
COLORADO REGISTRATION NUMBER 48305

NOTICE:  
ACCORDING TO COLORADO STATE LAW YOU MUST COMMENCE ANY LEGAL ACTION BASED UPON ANY DEFECT IN THIS SURVEY WITHIN THREE YEARS AFTER YOU FIRST DISCOVER SUCH DEFECT. IN NO EVENT MAY ANY ACTION BASED UPON ANY DEFECT IN THIS SURVEY BE COMMENCED MORE THAN TEN YEARS FROM THE DATE ON THE CERTIFICATION SHOWN HEREON.

NOTE:  
MAGNETIC NORTH IS CURRENT AS OF 6/2/2015.  
MAGNETIC NORTH CHANGES WEST 0°06' PER YEAR.

## NOTES:

- ▲ INDICATES FOUND SECTION CORNER
- INDICATES CALCULATED CORNER
- ELEVATION BASED ON NAVD88 (GEOID09)
- BASIS OF BEARING DERIVED FROM COLORADO COORDINATE SYSTEM 1983 NORTH ZONE UNLESS OTHERWISE NOTED.
- ALL MEASURED DISTANCES ARE GRID.  
COMBINED SCALE FACTOR: .99972835
- OPERATOR: ROB WILSON / PDOP = 1.4
- SEE ADDENDUM TO WELL LOCATION CERTIFICATE FOR EXISTING IMPROVEMENTS WITHIN 500' OF THE WELL PAD.
- WELL FOOTAGES ARE MEASURED AT RIGHT ANGLES TO THE SECTION LINES.
- THE BOTTOM OF HOLE BEARS N00°02'42\"W 5247' FROM THE SURFACE LOCATION.



SCALE: 1" = 1000'

## WELL PAD - LAND FED 13N-32HZ

LAND FED 35N-29HZ  
WELL LOCATION CERTIFICATE  
1040' FNL & 1469' FWL NENW (SURFACE)  
LOCATED IN SECTION 32  
21' FSL & 1634' FWL SESW (HEEL)  
1' FNL & 1682' FWL NENW (BOTTOM)  
LOCATED IN SECTION 29  
T2N, R66W, 6TH P.M.  
WELD COUNTY, COLORADO

**Kerr-McGee Oil &  
Gas Onshore L.P.**  
1099 18th Street  
Denver, Colorado 80202



## CONSULTING, LLC

SHERIDAN OFFICE  
1095 Saberton Avenue  
Sheridan, Wyoming 82801  
Phone 307-674-0609

LOVELAND OFFICE  
1635 Foxtrail Drive, Suite 204  
Loveland, Colorado 80538  
Phone 970-776-4331

DRAFTED BY:	MDZ	CHECKED BY:	BJR	SHEET NO:
DATE DRAFTED:	6/5/15	DATE SURVEYED:	3/24/15	<b>1B</b>
REVISED:		FILE NAME:	13-113	1B OF 1