



# Kerr-McGee Oil & Gas Onshore LP

A subsidiary of Anadarko Petroleum Corporation

1099 18<sup>th</sup> Street  
Denver, CO 80202  
720-929-6000

August 30, 2015

Matt Lepore  
Director, Colorado Oil and Gas Conservation Commission  
Department of Natural Resources  
The Chancery Building  
1120 Lincoln Street, Suite 801  
Denver, CO 80203

Re: **30 Day Certification Letter - 318A.e**  
LAND FED 35C-32HZ (Doc No. 400854584)  
Township 2 North, Range 66 West  
Section 32: NENW  
Unit Acreage: 480 acres  
Unit Spacing: 02N 66W SEC 29 S2SW  
02N 66W SEC 32 W2  
01N 66W SEC 05 N2NW  
Weld County, Colorado

Dear Director Lepore:

Kerr-McGee Oil and Gas Onshore LP ("KMG") hereby certifies that a thirty (30) day notice has been given by certified mail to all mineral owners in the proposed wellbore spacing unit. We have not received any objections to such well location, proposed spacing unit, or additional producing formation. KMG hereby respectfully requests approval of this boundary well.

If you have any questions or issues regarding this permit, please contact our office.

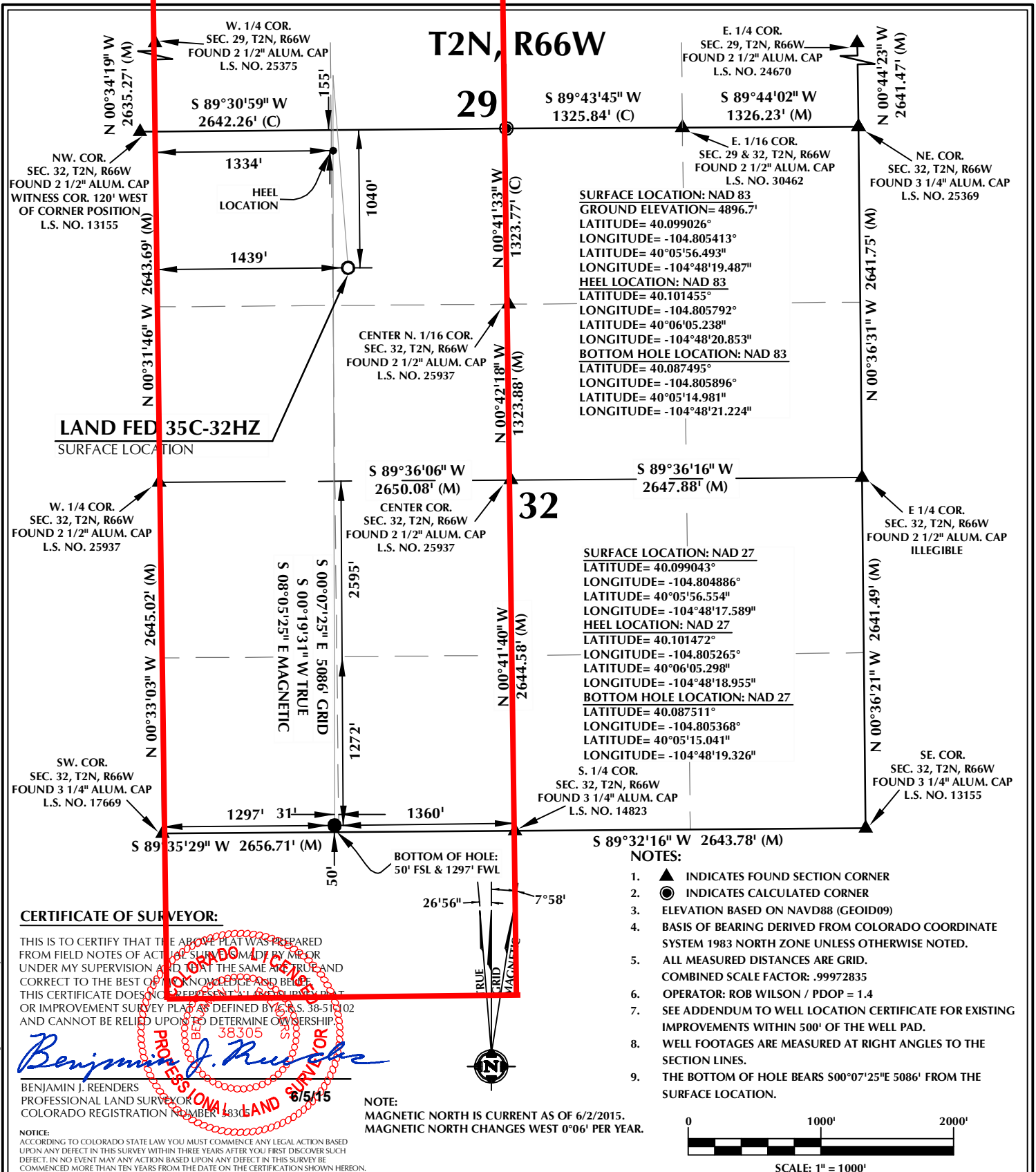
Sincerely,

**Kerr-McGee Oil and Gas Onshore LP**

A handwritten signature in blue ink that reads 'RPowers'.

Ronett Powers  
Regulatory Analyst II

Enclosure

**WELL PAD - LAND FED 13N-32HZ**

LAND FED 35C-32HZ  
WELL LOCATION CERTIFICATE  
1040' FNL & 1439' FWL NENW (SURFACE)  
155' FNL & 1334' FWL NENW (HEEL)  
50' FSL & 1297' FWL SWSW (BOTTOM)  
LOCATED IN SECTION 32  
T2N, R66W, 6TH P.M.  
WELD COUNTY, COLORADO

**Kerr-McGee Oil &  
Gas Onshore L.P.**  
1099 18th Street  
Denver, Colorado 80202

**CONSULTING, LLC**

**SHERIDAN OFFICE**  
1095 Saberton Avenue  
Sheridan, Wyoming 82801  
Phone 307-674-0609

**LOVELAND OFFICE**  
1635 Foxtrail Drive, Suite 204  
Loveland, Colorado 80538  
Phone 970-776-4331

DRAFTED BY:	MDZ	CHECKED BY:	BJR
DATE DRAFTED:	6/5/15	DATE SURVEYED:	3/24/15
REVISED:		FILE NAME:	13-113