

LEGEND:

PROPOSED LOCATION

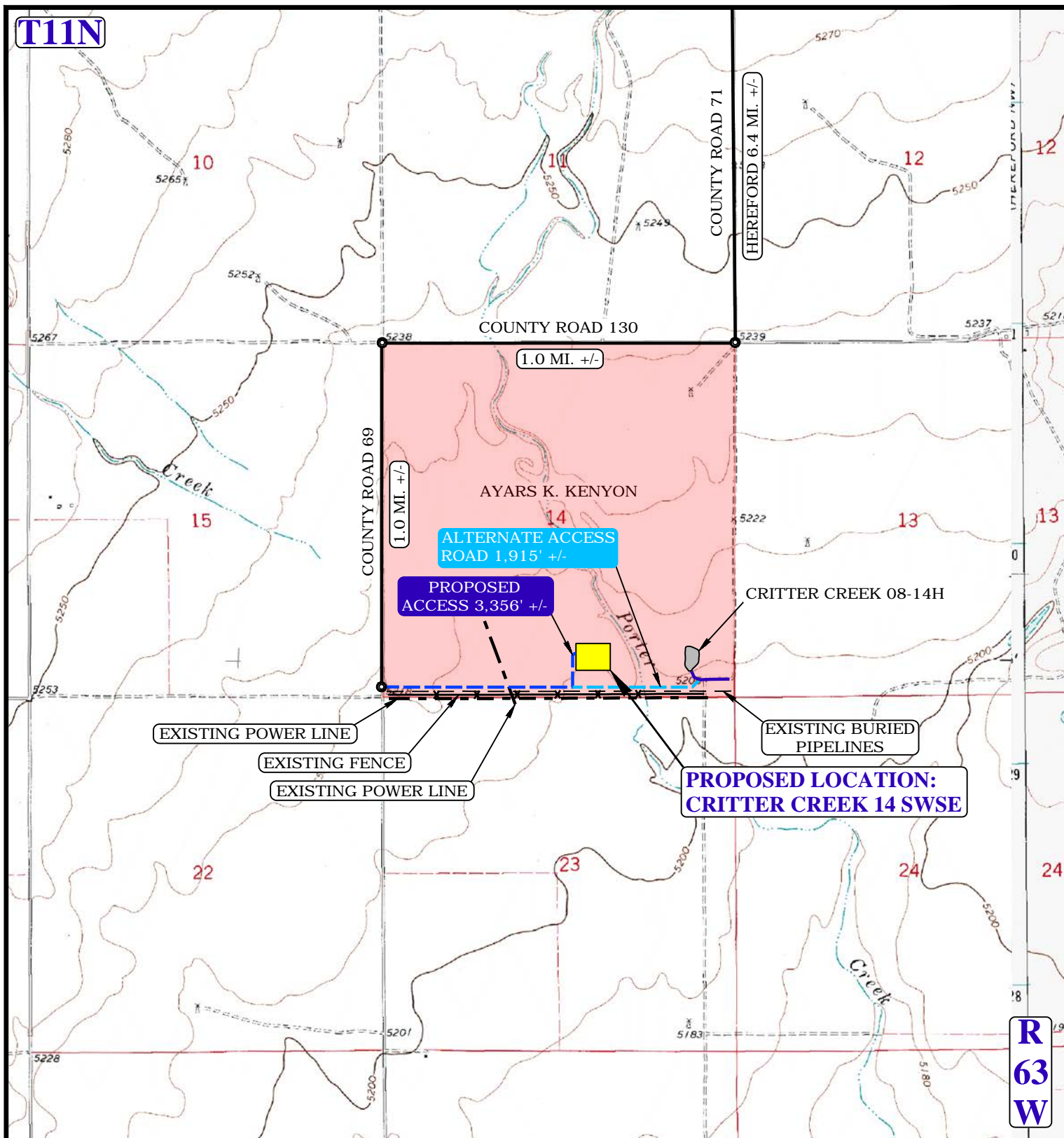
EOG RESOURCES, INC.

CRITTER CREEK 14 SWSE
 SW 1/4 SE 1/4, SECTION 14, T11N, R93W, 6th P.M.
 WELD COUNTY, COLORADO



UELS, LLC
 Corporate Office * 85 South 200 East
 Vernal, UT 84078 * (435) 789-1017

DRAWN BY: C.M.F.	DATE DRAWN: 04-09-15
SCALE: 1:100,000	REVISED: 00-00-00
ACCESS ROAD MAP	TOPO A



NOTE: PARCEL DATA SHOWN HAS BEEN OBTAINED FROM VARIOUS SOURCES AND SHOULD BE USED FOR MAPPING, GRAPHIC AND PLANNING PURPOSES ONLY. NO WARRANTY IS MADE BY UINTAH ENGINEERING AND LAND SURVEYING (UELS) FOR ACCURACY OF THE PARCEL DATA.

LEGEND:

	EXISTING ROAD
	PROPOSED ROAD
	EXISTING FENCE
	EXISTING POWERLINE
	EXISTING BURIED PIPELINE
	PROPOSED ALTERNATE ROUTE

EOG RESOURCES, INC.

CRITTER CREEK 14 SWSE
SW 1/4 SE 1/4, SECTION 14, T11N, R93W, 6th P.M.
WELD COUNTY, COLORADO

DRAWN BY: C.M.F.

DATE DRAWN: 04-09-15

SCALE: 1" = 2000'

REVISED: 00-00-00

ACCESS ROAD MAP

TOPO B



UELS, LLC
 Corporate Office * 85 South 200 East
 Vernal, UT 84078 * (435) 789-1017

