



# Kerr-McGee Oil & Gas Onshore LP

A subsidiary of Anadarko Petroleum Corporation

1099 18<sup>th</sup> Street  
Denver, CO 80202  
720-929-6000

August 30, 2015

Matt Lepore  
Director, Colorado Oil and Gas Conservation Commission  
Department of Natural Resources  
The Chancery Building  
1120 Lincoln Street, Suite 801  
Denver, CO 80203

Re: **30 Day Certification Letter - 318A.e**  
LAND FED 29C-29HZ (Doc No. 400854578)  
Township 2 North, Range 66 West  
Section 32: NENW  
Unit Acreage: 480 acres  
Unit Spacing: 02N 66W SEC 20 S2SW  
02N 66W SEC 29 W2  
02N 66W SEC 32 N2NW  
Weld County, Colorado

Dear Director Lepore:

Kerr-McGee Oil and Gas Onshore LP ("KMG") hereby certifies that a thirty (30) day notice has been given by certified mail to all mineral owners in the proposed wellbore spacing unit. We have not received any objections to such well location, proposed spacing unit, or additional producing formation. KMG hereby respectfully requests approval of this boundary well.

If you have any questions or issues regarding this permit, please contact our office.

Sincerely,

**Kerr-McGee Oil and Gas Onshore LP**

A handwritten signature in blue ink that reads 'RPowers'.

Ronett Powers  
Regulatory Analyst II

Enclosure

# PROPOSED SPACING UNIT

**T2N, R66W**

E. 1/16 COR.  
SEC. 29 & 32, T2N, R66W  
FOUND 2 1/2" ALUM. CAP  
L.S. NO. 30462

MATCH LINE  
SEE SHEET 1B

NW. COR.  
SEC. 32, T2N, R66W  
FOUND 2 1/2" ALUM. CAP  
WITNESS COR. 120' WEST  
OF CORNER POSITION  
L.S. NO. 13155

NE. COR.  
SEC. 32, T2N, R66W  
FOUND 3 1/4" ALUM. CAP  
L.S. NO. 25369

**SURFACE LOCATION: NAD 83**  
GROUND ELEVATION= 4896.9'  
LATITUDE= 40.099026°  
LONGITUDE= -104.805467°  
LATITUDE= 40°05'56.495"  
LONGITUDE= -104°48'19.680"  
**HEEL LOCATION: NAD 83**  
LATITUDE= 40.101913°  
LONGITUDE= -104.806079°  
LATITUDE= 40°06'06.888"  
LONGITUDE= -104°48'21.886"  
**BOTTOM HOLE LOCATION: NAD 83**  
LATITUDE= 40.116342°  
LONGITUDE= -104.806130°  
LATITUDE= 40°06'58.831"  
LONGITUDE= -104°48'22.067"

**SURFACE LOCATION: NAD 27**  
LATITUDE= 40.099043°  
LONGITUDE= -104.804940°  
LATITUDE= 40°05'56.555"  
LONGITUDE= -104°48'17.782"  
**HEEL LOCATION: NAD 27**  
LATITUDE= 40.101930°  
LONGITUDE= -104.805552°  
LATITUDE= 40°06'06.948"  
LONGITUDE= -104°48'19.988"  
**BOTTOM HOLE LOCATION: NAD 27**  
LATITUDE= 40.116359°  
LONGITUDE= -104.805603°  
LATITUDE= 40°06'58.891"  
LONGITUDE= -104°48'20.170"

W. 1/4 COR.  
SEC. 32, T2N, R66W  
FOUND 2 1/2" ALUM. CAP  
L.S. NO. 25937

CENTER COR.  
SEC. 32, T2N, R66W  
FOUND 2 1/2" ALUM. CAP  
L.S. NO. 25937

E. 1/4 COR.  
SEC. 32, T2N, R66W  
FOUND 2 1/2" ALUM. CAP  
ILLEGIBLE

SW. COR.  
SEC. 32, T2N, R66W  
FOUND 3 1/4" ALUM. CAP  
L.S. NO. 17669

S. 1/4 COR.  
SEC. 32, T2N, R66W  
FOUND 3 1/4" ALUM. CAP  
L.S. NO. 14823

SE. COR.  
SEC. 32, T2N, R66W  
FOUND 3 1/4" ALUM. CAP  
L.S. NO. 13155

**32**

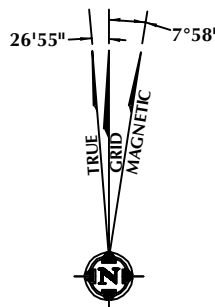
**LAND FED 29C-29HZ**  
SURFACE LOCATION

## CERTIFICATE OF SURVEYOR:

THIS IS TO CERTIFY THAT THE ABOVE PLAT WAS PREPARED FROM FIELD NOTES OF ACTUAL SURVEY MADE BY ME OR UNDER MY SUPERVISION AND THAT THE SAME ARE TRUE AND CORRECT TO THE BEST OF MY KNOWLEDGE AND BELIEF. THIS CERTIFICATE DOES NOT REPRESENT A LAND SURVEY PLAT OR IMPROVEMENT SURVEY PLAT AS DEFINED BY C.S. 38-513-02 AND CANNOT BE RELIED UPON TO DETERMINE OWNERSHIP.

*Benjamin J. Reenders*  
PROFESSIONAL LAND SURVEYOR  
COLORADO REGISTRATION NUMBER 14336

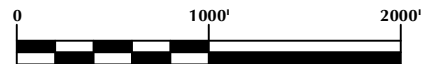
NOTICE:  
ACCORDING TO COLORADO STATE LAW YOU MUST COMMENCE ANY LEGAL ACTION BASED UPON ANY DEFECT IN THIS SURVEY WITHIN THREE YEARS AFTER YOU FIRST DISCOVER SUCH DEFECT. IN NO EVENT MAY ANY ACTION BASED UPON ANY DEFECT IN THIS SURVEY BE COMMENCED MORE THAN TEN YEARS FROM THE DATE ON THE CERTIFICATION SHOWN HEREON.



NOTE:  
MAGNETIC NORTH IS CURRENT AS OF 6/2/2015.  
MAGNETIC NORTH CHANGES WEST 0°06' PER YEAR.

## NOTES:

- ▲ INDICATES FOUND SECTION CORNER
- INDICATES CALCULATED CORNER
- ELEVATION BASED ON NAVD88 (GEOID09)
- BASIS OF BEARING DERIVED FROM COLORADO COORDINATE SYSTEM 1983 NORTH ZONE UNLESS OTHERWISE NOTED.
- ALL MEASURED DISTANCES ARE GRID.  
COMBINED SCALE FACTOR: .99972835
- OPERATOR: ROB WILSON / PDOP = 1.4
- SEE ADDENDUM TO WELL LOCATION CERTIFICATE FOR EXISTING IMPROVEMENTS WITHIN 500' OF THE WELL PAD.
- WELL FOOTAGES ARE MEASURED AT RIGHT ANGLES TO THE SECTION LINES.
- THE BOTTOM OF HOLE BEARS N00°36'07"W 5256' FROM THE SURFACE LOCATION.



SCALE: 1" = 1000'

## WELL PAD - LAND FED 13N-32HZ

LAND FED 29C-29HZ  
WELL LOCATION CERTIFICATE  
1040' FNL & 1424' FWL NENW (SURFACE)  
LOCATED IN SECTION 32  
12' FSL & 1254' FWL SWSW (HEEL)  
1' FNL & 1251' FWL NWNW (BOTTOM)  
LOCATED IN SECTION 29  
T2N, R66W, 6TH P.M.  
WELD COUNTY, COLORADO

**Kerr-McGee Oil &  
Gas Onshore L.P.**  
1099 18th Street  
Denver, Colorado 80202



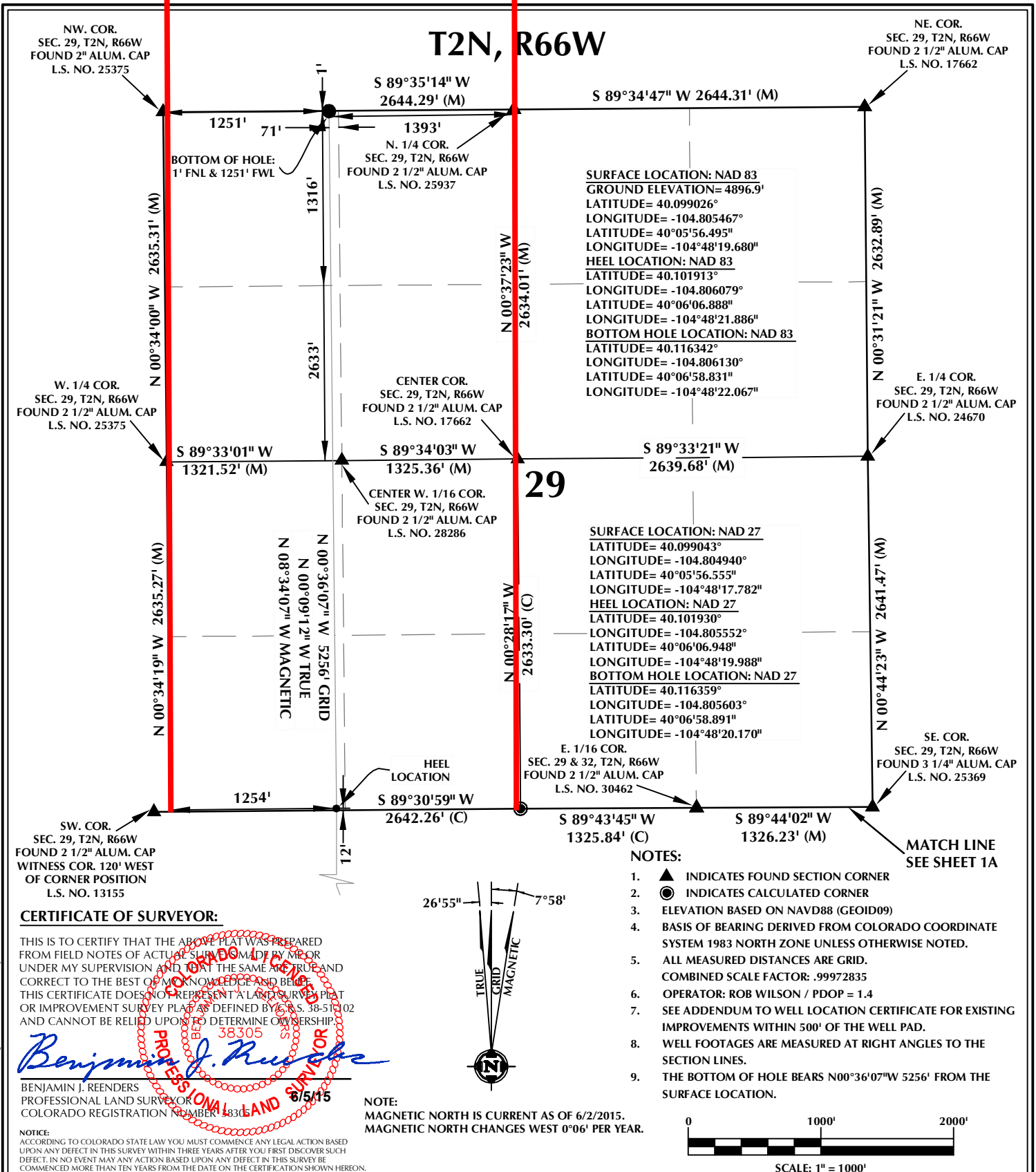
## CONSULTING, LLC

SHERIDAN OFFICE  
1095 Saberton Avenue  
Sheridan, Wyoming 82801  
Phone 307-674-0609

LOVELAND OFFICE  
1635 Foxtrail Drive, Suite 204  
Loveland, Colorado 80538  
Phone 970-776-4331

DRAFTED BY:	MDZ	CHECKED BY:	BJR	SHEET NO:
DATE DRAFTED:	6/5/15	DATE SURVEYED:	3/24/15	<b>1A</b>
REVISED:		FILE NAME:	13-113	1A OF 1

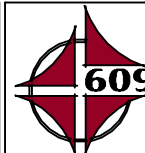
# PROPOSED SPACING UNIT



## WELL PAD - LAND FED 13N-32HZ

LAND FED 29C-29HZ  
WELL LOCATION CERTIFICATE  
1040' FNL & 1424' FWL NENW (SURFACE)  
LOCATED IN SECTION 32  
12' FSL & 1254' FWL SWSW (HEEL)  
1' FNL & 1251' FWL NWNW (BOTTOM)  
LOCATED IN SECTION 29  
T2N, R66W, 6TH P.M.  
WELD COUNTY, COLORADO

**Kerr-McGee Oil &  
Gas Onshore L.P.**  
1099 18th Street  
Denver, Colorado 80202



## CONSULTING, LLC

**SHERIDAN OFFICE**  
1095 Saberton Avenue  
Sheridan, Wyoming 82801  
Phone 307-674-0609

**LOVELAND OFFICE**  
1635 Foxtrail Drive, Suite 204  
Loveland, Colorado 80538  
Phone 970-776-4331

DRAFTED BY:	MDZ	CHECKED BY:	BJR	SHEET NO:
DATE DRAFTED:	6/5/15	DATE SURVEYED:	3/24/15	<b>1B</b>
REVISED:		FILE NAME:	13-113	1B OF 1