

K:\ADARKO\2013\113 COLORADO T2N R66W SEC 32 PLATS\LAND FED 13N-32HZ.dwg, 6/10/2015 11:46:03 PM, jake

T2N, R66W

E. 1/16 COR.
SEC. 29 & 32, T2N, R66W
FOUND 2 1/2" ALUM. CAP
L.S. NO. 30462

MATCH LINE
SEE SHEET 1B

NW. COR.
SEC. 32, T2N, R66W
FOUND 2 1/2" ALUM. CAP
WITNESS COR. 120' WEST
OF CORNER POSITION
L.S. NO. 13155

NE. COR.
SEC. 32, T2N, R66W
FOUND 3 1/4" ALUM. CAP
L.S. NO. 25369

SURFACE LOCATION: NAD 83
GROUND ELEVATION= 4896.9'
LATITUDE= 40.099026°
LONGITUDE= -104.805467°
LATITUDE= 40°05'56.495"
LONGITUDE= -104°48'19.680"
HEEL LOCATION: NAD 83
LATITUDE= 40.101913°
LONGITUDE= -104.806079°
LATITUDE= 40°06'06.888"
LONGITUDE= -104°48'21.886"
BOTTOM HOLE LOCATION: NAD 83
LATITUDE= 40.116342°
LONGITUDE= -104.806130°
LATITUDE= 40°06'58.831"
LONGITUDE= -104°48'22.067"

CENTER N. 1/16 COR.
SEC. 32, T2N, R66W
FOUND 2 1/2" ALUM. CAP
L.S. NO. 25937

LAND FED 29C-29HZ
SURFACE LOCATION

W. 1/4 COR.
SEC. 32, T2N, R66W
FOUND 2 1/2" ALUM. CAP
L.S. NO. 25937

CENTER COR.
SEC. 32, T2N, R66W
FOUND 2 1/2" ALUM. CAP
L.S. NO. 25937

E 1/4 COR.
SEC. 32, T2N, R66W
FOUND 2 1/2" ALUM. CAP
ILLEGIBLE

SW. COR.
SEC. 32, T2N, R66W
FOUND 3 1/4" ALUM. CAP
L.S. NO. 17669

S. 1/4 COR.
SEC. 32, T2N, R66W
FOUND 3 1/4" ALUM. CAP
L.S. NO. 14823

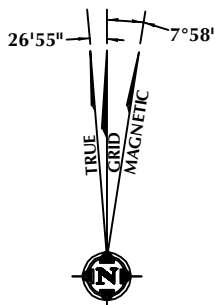
SE. COR.
SEC. 32, T2N, R66W
FOUND 3 1/4" ALUM. CAP
L.S. NO. 13155

CERTIFICATE OF SURVEYOR:

THIS IS TO CERTIFY THAT THE ABOVE PLAT WAS PREPARED FROM FIELD NOTES OF ACTUAL SURVEY MADE BY ME OR UNDER MY SUPERVISION AND THAT THE SAME ARE TRUE AND CORRECT TO THE BEST OF MY KNOWLEDGE AND BELIEF. THIS CERTIFICATE DOES NOT REPRESENT A LAND SURVEY PLAT OR IMPROVEMENT SURVEY PLAT AS DEFINED BY C.S. 38-51-102 AND CANNOT BE RELIED UPON TO DETERMINE OWNERSHIP.

Benjamin J. Reenders
BENJAMIN J. REENDERS
PROFESSIONAL LAND SURVEYOR
COLORADO REGISTRATION NUMBER 18306
6/5/15

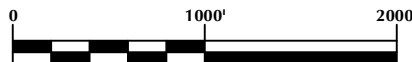
NOTICE:
ACCORDING TO COLORADO STATE LAW YOU MUST COMMENCE ANY LEGAL ACTION BASED UPON ANY DEFECT IN THIS SURVEY WITHIN THREE YEARS AFTER YOU FIRST DISCOVER SUCH DEFECT. IN NO EVENT MAY ANY ACTION BASED UPON ANY DEFECT IN THIS SURVEY BE COMMENCED MORE THAN TEN YEARS FROM THE DATE ON THE CERTIFICATION SHOWN HEREON.



NOTE:
MAGNETIC NORTH IS CURRENT AS OF 6/2/2015.
MAGNETIC NORTH CHANGES WEST 0°06' PER YEAR.

NOTES:

- ▲ INDICATES FOUND SECTION CORNER
- INDICATES CALCULATED CORNER
- ELEVATION BASED ON NAVD88 (GEOID09)
- BASIS OF BEARING DERIVED FROM COLORADO COORDINATE SYSTEM 1983 NORTH ZONE UNLESS OTHERWISE NOTED.
- ALL MEASURED DISTANCES ARE GRID.
COMBINED SCALE FACTOR: .99972835
- OPERATOR: ROB WILSON / PDOP = 1.4
- SEE ADDENDUM TO WELL LOCATION CERTIFICATE FOR EXISTING IMPROVEMENTS WITHIN 500' OF THE WELL PAD.
- WELL FOOTAGES ARE MEASURED AT RIGHT ANGLES TO THE SECTION LINES.
- THE BOTTOM OF HOLE BEARS N00°36'07"W 5256' FROM THE SURFACE LOCATION.



SCALE: 1" = 1000'

WELL PAD - LAND FED 13N-32HZ

LAND FED 29C-29HZ
WELL LOCATION CERTIFICATE
1040' FNL & 1424' FWL NENW (SURFACE)
LOCATED IN SECTION 32
12' FSL & 1254' FWL SWSW (HEEL)
1' FNL & 1251' FWL NWNW (BOTTOM)
LOCATED IN SECTION 29
T2N, R66W, 6TH P.M.
WELD COUNTY, COLORADO

**Kerr-McGee Oil &
Gas Onshore L.P.**
1099 18th Street
Denver, Colorado 80202



CONSULTING, LLC

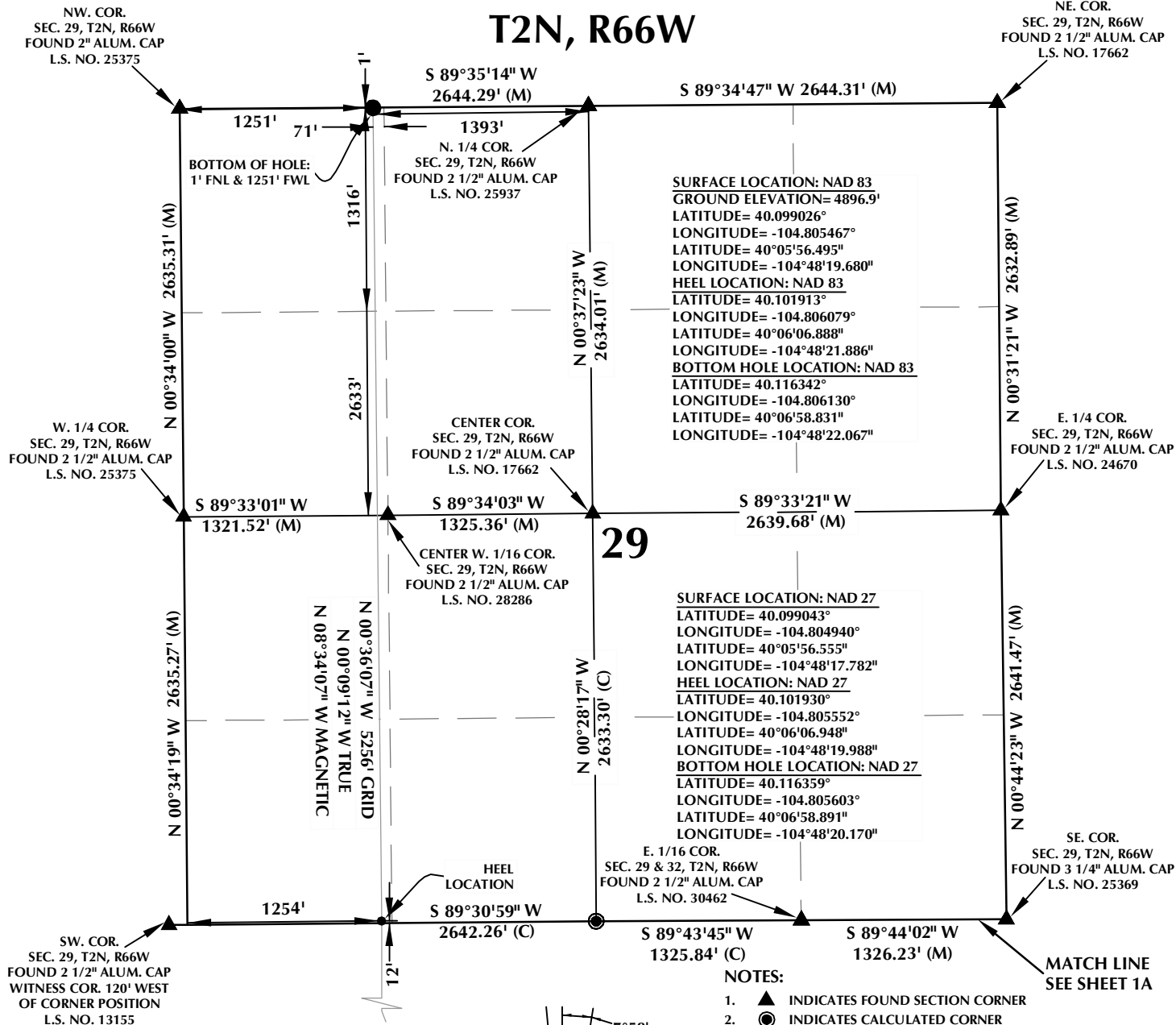
SHERIDAN OFFICE
1095 Saberton Avenue
Sheridan, Wyoming 82801
Phone 307-674-0609

LOVELAND OFFICE
1635 Foxtrail Drive, Suite 204
Loveland, Colorado 80538
Phone 970-776-4331

DRAFTED BY:	MDZ	CHECKED BY:	BJR	SHEET NO:
DATE DRAFTED:	6/5/15	DATE SURVEYED:	3/24/15	1A
REVISED:		FILE NAME:	13-113	1A OF 1

K:\ADARKO\2013\113 COLORADO T2N66W SEC32PLAT132H2.dwg, 6/10/2015 11:45:18 PM, jake

T2N, R66W



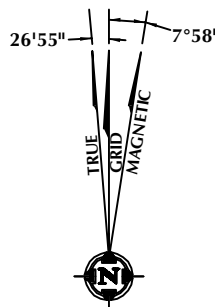
CERTIFICATE OF SURVEYOR:

THIS IS TO CERTIFY THAT THE ABOVE PLAT WAS PREPARED FROM FIELD NOTES OF ACTUAL SURVEY MADE BY ME OR UNDER MY SUPERVISION AND THAT THE SAME ARE TRUE AND CORRECT TO THE BEST OF MY KNOWLEDGE AND BELIEF. THIS CERTIFICATE DOES NOT REPRESENT A LAND SURVEY PLAT OR IMPROVEMENT SURVEY PLAT AS DEFINED BY C.S. 38-51-102 AND CANNOT BE RELIED UPON TO DETERMINE OWNERSHIP.

Benjamin J. Reenders
BENJAMIN J. REENDERS
PROFESSIONAL LAND SURVEYOR
COLORADO REGISTRATION NUMBER 48306 6/5/15

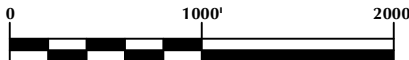
NOTICE:
ACCORDING TO COLORADO STATE LAW YOU MUST COMMENCE ANY LEGAL ACTION BASED UPON ANY DEFECT IN THIS SURVEY WITHIN THREE YEARS AFTER YOU FIRST DISCOVER SUCH DEFECT. IN NO EVENT MAY ANY ACTION BASED UPON ANY DEFECT IN THIS SURVEY BE COMMENCED MORE THAN TEN YEARS FROM THE DATE ON THE CERTIFICATION SHOWN HEREON.

NOTE:
MAGNETIC NORTH IS CURRENT AS OF 6/2/2015.
MAGNETIC NORTH CHANGES WEST 0°06' PER YEAR.



NOTES:

- ▲ INDICATES FOUND SECTION CORNER
- INDICATES CALCULATED CORNER
- ELEVATION BASED ON NAVD88 (GEOID09)
- BASIS OF BEARING DERIVED FROM COLORADO COORDINATE SYSTEM 1983 NORTH ZONE UNLESS OTHERWISE NOTED.
- ALL MEASURED DISTANCES ARE GRID.
COMBINED SCALE FACTOR: .99972835
- OPERATOR: ROB WILSON / PDOP = 1.4
- SEE ADDENDUM TO WELL LOCATION CERTIFICATE FOR EXISTING IMPROVEMENTS WITHIN 500' OF THE WELL PAD.
- WELL FOOTAGES ARE MEASURED AT RIGHT ANGLES TO THE SECTION LINES.
- THE BOTTOM OF HOLE BEARS N00°36'07"W 5256' FROM THE SURFACE LOCATION.



SCALE: 1" = 1000'

WELL PAD - LAND FED 13N-32HZ

LAND FED 29C-29HZ
WELL LOCATION CERTIFICATE
1040' FNL & 1424' FWL NENW (SURFACE)
LOCATED IN SECTION 32
12' FSL & 1254' FWL SWSW (HEEL)
1' FNL & 1251' FWL NWNW (BOTTOM)
LOCATED IN SECTION 29
T2N, R66W, 6TH P.M.
WELD COUNTY, COLORADO

**Kerr-McGee Oil &
Gas Onshore L.P.**
1099 18th Street
Denver, Colorado 80202



CONSULTING, LLC

SHERIDAN OFFICE
1095 Saberton Avenue
Sheridan, Wyoming 82801
Phone 307-674-0609

LOVELAND OFFICE
1635 Foxtrail Drive, Suite 204
Loveland, Colorado 80538
Phone 970-776-4331

DRAFTED BY:	MDZ	CHECKED BY:	BJR	SHEET NO:
DATE DRAFTED:	6/5/15	DATE SURVEYED:	3/24/15	1B
REVISED:		FILE NAME:	13-113	1B OF 1