



Kerr-McGee Oil & Gas Onshore LP

A subsidiary of Anadarko Petroleum Corporation

1099 18th Street
Denver, CO 80202
720-929-6000

August 30, 2015

Matt Lepore
Director, Colorado Oil and Gas Conservation Commission
Department of Natural Resources
The Chancery Building
1120 Lincoln Street, Suite 801
Denver, CO 80203

Re: **30 Day Certification Letter - 318A.e**
LAND FED 13N-32HZ (Doc No. 400854574)
Township 2 North, Range 66 West
Section 32: NENW
Unit Acreage: 480 acres
Unit Spacing: 02N 66W SEC 29 S2SW
02N 66W SEC 32 W2
01N 66W SEC 05 N2NW
Weld County, Colorado

Dear Director Lepore:

Kerr-McGee Oil and Gas Onshore LP ("KMG") hereby certifies that a thirty (30) day notice has been given by certified mail to all mineral owners in the proposed wellbore spacing unit. We have not received any objections to such well location, proposed spacing unit, or additional producing formation. KMG hereby respectfully requests approval of this boundary well.

If you have any questions or issues regarding this permit, please contact our office.

Sincerely,

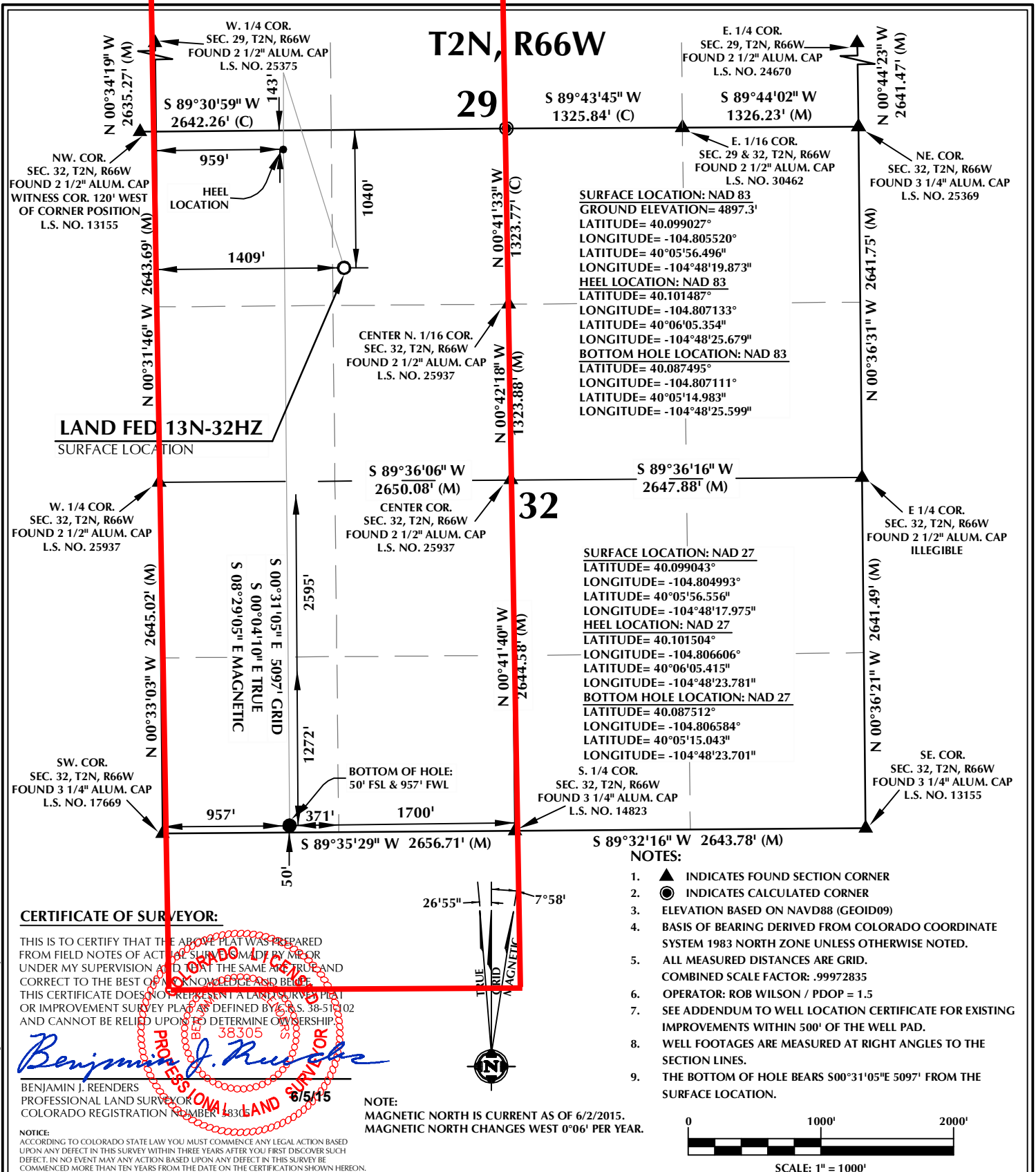
Kerr-McGee Oil and Gas Onshore LP

A handwritten signature in blue ink that reads 'RPowers'.

Ronett Powers
Regulatory Analyst II

Enclosure

PROPOSED SPACING UNIT



WELL PAD - LAND FED 13N-32HZ

LAND FED 13N-32HZ
WELL LOCATION CERTIFICATE
1040' FNL & 1409' FWL NENW (SURFACE)
143' FNL & 959' FWL NWNW (HEEL)
50' FSL & 957' FWL SWSW (BOTTOM)
LOCATED IN SECTION 32
T2N, R66W, 6TH P.M.
WELD COUNTY, COLORADO

**Kerr-McGee Oil &
Gas Onshore L.P.**
1099 18th Street
Denver, Colorado 80202



CONSULTING, LLC

SHERIDAN OFFICE
1095 Saberton Avenue
Sheridan, Wyoming 82801
Phone 307-674-0609

LOVELAND OFFICE
1635 Foxtrail Drive, Suite 204
Loveland, Colorado 80538
Phone 970-776-4331

DRAFTED BY:	MDZ	CHECKED BY:	BJR
DATE DRAFTED:	6/5/15	DATE SURVEYED:	3/24/15
REVISED:		FILE NAME:	13-113