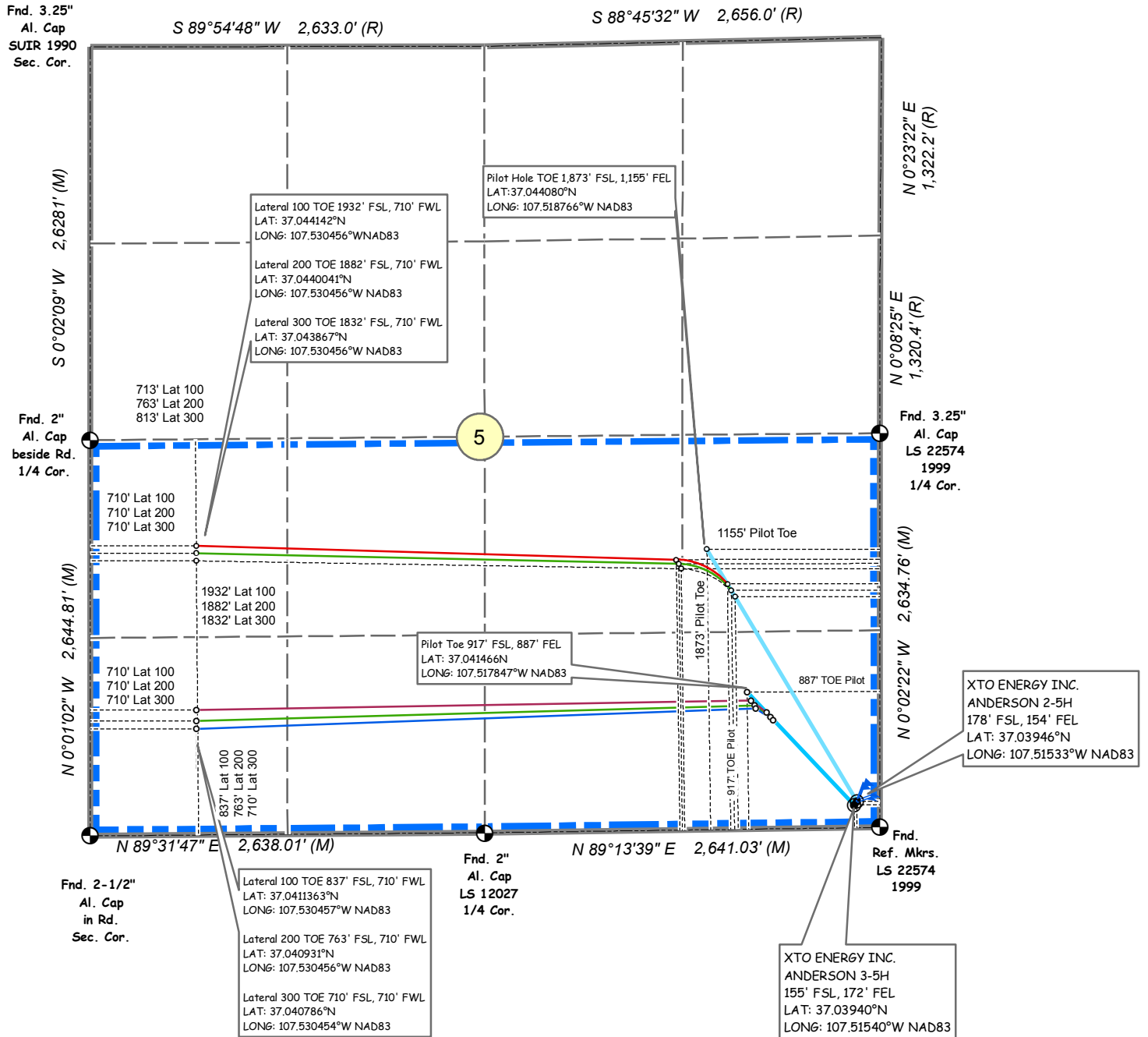


XTO ENERGY INC.

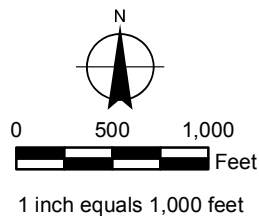
ANDERSON 2-5H SURFACE HOLE: 178' FSL, 154' FEL
ANDERSON 3-5H SURFACE HOLE: 155' FSL, 172' FEL
SECTION 5, T-32-N, R-06-W, N.M.P.M.,
LA PLATA COUNTY, COLORADO



MULTI WELL PLAN

Legend

- STAKED LOCATION
- DRILL PATH NODE
- LEASE AREA



XEN1552_3MULTIWELL.MXD 20150904

JMAS

JOHNSON MAPPING AND SURVEYING, LLC
PO BOX 2174
FARMINGTON NM 87499-2174
505-360-8029
ALEX@JOHNSONMAPPING.BIZ