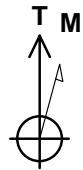
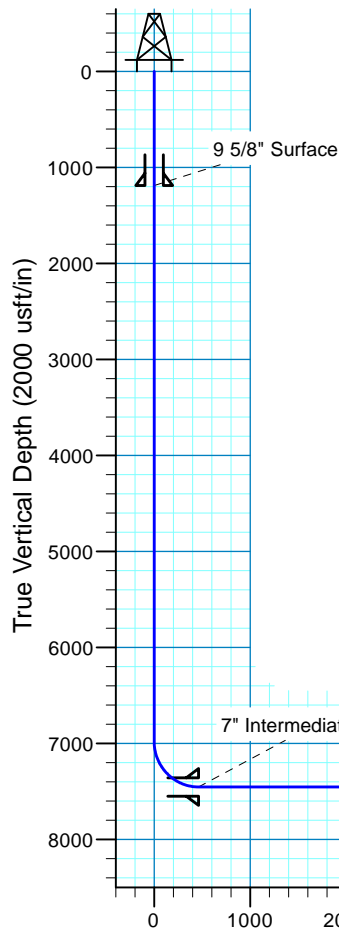


Critter Creek 509-1411H

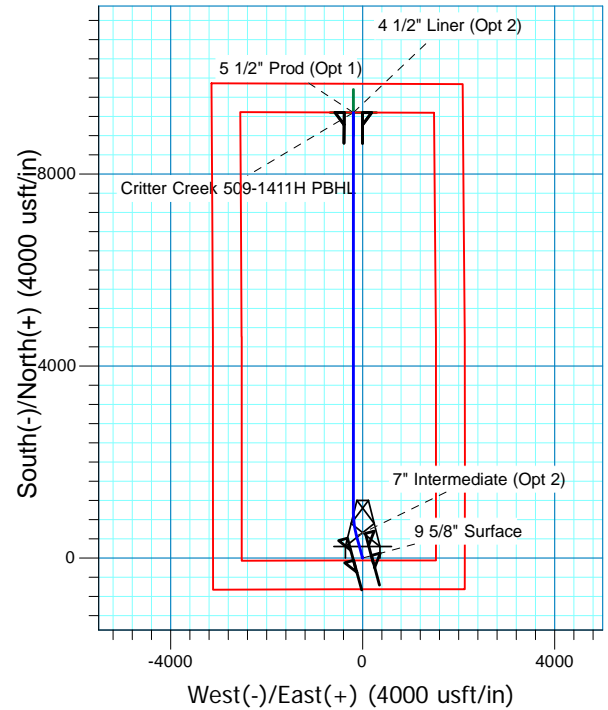
Sec.14-T11N-R63W
Weld County, Colorado

Surface Location

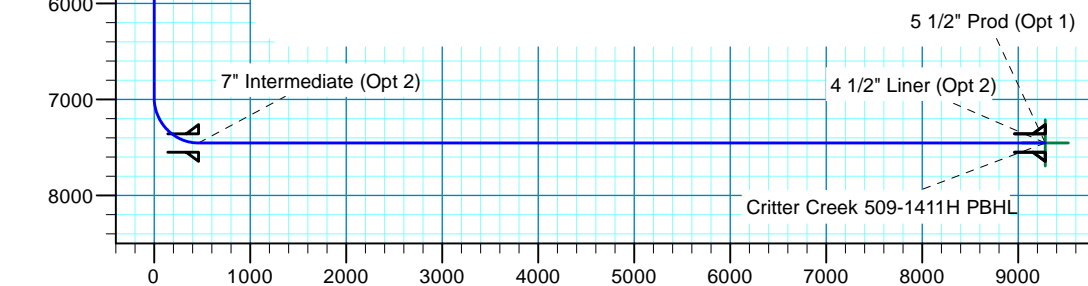
NAD 1927 (NADCON CONUS) Colorado North 501
Ground Elevation: 5208.0 RKB @ 5233.0usft (KB GL+25')
Northing 578811.99 Easting 2304648.69 Latitude 40° 55' 1.334 N Longitude 104° 23' 51.877 W



Azimuths to True North
Magnetic North: 8.27°
Magnetic Field
Strength: 52922.3snT
Dip Angle: 67.38°
Date: 6/19/2015
Model: IGRF2015



Project: DJ - Hereford Ranch
Site: Critter Creek C14 SWSE Pad
Well: Critter Creek 509-1411H
Plan: AAPD Plan (Plat Cert 4/16/15)



Vertical Section at 358.83° (2000 usft/in)

SECTION DETAILS										
Sec	MD	Inc	Azi	TVD	+N/-S	+E/-W	Dleg	TFace	VSect	Target
1	0.0	0.00	0.00	0.0	0.0	0.0	0.00	0.00	0.0	
2	6977.5	0.00	0.00	6977.5	0.0	0.0	0.00	0.00	0.0	
3	7727.5	90.00	344.90	7455.0	461.0	-124.4	12.00	344.90	463.4	
4	8230.9	90.00	0.00	7455.0	958.6	-190.3	3.00	90.00	962.3	Critter Creek 509-1411H PBHL
5	16553.8	90.00	0.00	7455.0	9281.5	-189.8	0.00	0.00	9283.4	Critter Creek 509-1411H PBHL
TARGET DETAILS										
Name	TVD	+N/-S	+E/-W	Northing	Easting	Latitude	Longitude	Shape		
Critter Creek 509-1411H PBHL	7455.0	9281.5	-189.8	588090.40	2304343.50	40° 56' 33.041 N	104° 23' 54.350 W	Point		

Denver Division- Colorado

**DJ - Hereford Ranch
Crittter Creek C14 SWSE Pad
Crittter Creek 509-1411H**

OH

Plan: AAPD Plan (Plat Cert 4/16/15)

Standard Planning Report

19 June, 2015

EOG Resources, Inc.

Planning Report

Database:	EDM_DENVER	Local Co-ordinate Reference:	Well Critter Creek 509-1411H
Company:	Denver Division- Colorado	TVD Reference:	RKB @ 5233.0usft (KB GL+25')
Project:	DJ - Hereford Ranch	MD Reference:	RKB @ 5233.0usft (KB GL+25')
Site:	Critter Creek C14 SWSE Pad	North Reference:	True
Well:	Critter Creek 509-1411H	Survey Calculation Method:	Minimum Curvature
Wellbore:	OH		
Design:	AAPD Plan (Plat Cert 4/16/15)		

Project	DJ - Hereford Ranch, Weld County		
Map System:	US State Plane 1927 (Exact solution)	System Datum:	Mean Sea Level
Geo Datum:	NAD 1927 (NADCON CONUS)		
Map Zone:	Colorado North 501		

Site	Critter Creek C14 SWSE Pad		
Site Position:		Northing:	578,800.00 usft
From:	Map	Easting:	2,304,550.00 usft
Position Uncertainty:	0.0 usft	Slot Radius:	13-3/16 "
		Latitude:	40° 55' 1.227 N
		Longitude:	104° 23' 53.164 W
		Grid Convergence:	0.71 °

Well	Critter Creek 509-1411H		
Well Position	+N/-S	10.8 usft	Northing:
	+E/-W	98.8 usft	Easting:
Position Uncertainty	0.0 usft	Wellhead Elevation:	0.0 usft
		Latitude:	40° 55' 1.334 N
		Longitude:	104° 23' 51.877 W
		Ground Level:	5,208.0 usft

Wellbore	OH		
Magnetics	Model Name	Sample Date	Declination
			(°)
	IGRF2015	6/19/2015	8.27
			Dip Angle
			(°)
			67.38
			Field Strength
			(nT)
			52,922

Design	AAPD Plan (Plat Cert 4/16/15)		
Audit Notes:			
Version:	Phase:	PROTOTYPE	Tie On Depth:
			0.0
Vertical Section:	Depth From (TVD)	+N/-S	+E/-W
	(usft)	(usft)	(usft)
	0.0	0.0	0.0
			Direction
			(°)
			358.83

Plan Sections										
Measured	Inclination	Azimuth	Vertical	+N/-S	+E/-W	Dogleg	Build	Turn	TFO	Target
Depth	(°)	(°)	Depth	(usft)	(usft)	Rate	Rate	Rate	(°)	
(usft)			(usft)			(°/100usft)	(°/100usft)	(°/100usft)		
0.0	0.00	0.00	0.0	0.0	0.0	0.00	0.00	0.00	0.00	
6,977.5	0.00	0.00	6,977.5	0.0	0.0	0.00	0.00	0.00	0.00	
7,727.5	90.00	344.90	7,455.0	461.0	-124.4	12.00	12.00	0.00	344.90	
8,230.9	90.00	0.00	7,455.0	958.6	-190.3	3.00	0.00	3.00	90.00	Critter Creek 509-141
16,553.8	90.00	0.00	7,455.0	9,281.5	-189.8	0.00	0.00	0.00	0.00	Critter Creek 509-141

EOG Resources, Inc.

Planning Report

Database:	EDM_DENVER	Local Co-ordinate Reference:	Well Critter Creek 509-1411H
Company:	Denver Division- Colorado	TVD Reference:	RKB @ 5233.0usft (KB GL+25')
Project:	DJ - Hereford Ranch	MD Reference:	RKB @ 5233.0usft (KB GL+25')
Site:	Critter Creek C14 SWSE Pad	North Reference:	True
Well:	Critter Creek 509-1411H	Survey Calculation Method:	Minimum Curvature
Wellbore:	OH		
Design:	AAPD Plan (Plat Cert 4/16/15)		

Planned Survey									
Measured Depth (usft)	Inclination (°)	Azimuth (°)	Vertical Depth (usft)	+N/-S (usft)	+E/-W (usft)	Vertical Section (usft)	Dogleg Rate (°/100usft)	Build Rate (°/100usft)	Turn Rate (°/100usft)
0.0	0.00	0.00	0.0	0.0	0.0	0.0	0.00	0.00	0.00
100.0	0.00	0.00	100.0	0.0	0.0	0.0	0.00	0.00	0.00
200.0	0.00	0.00	200.0	0.0	0.0	0.0	0.00	0.00	0.00
300.0	0.00	0.00	300.0	0.0	0.0	0.0	0.00	0.00	0.00
400.0	0.00	0.00	400.0	0.0	0.0	0.0	0.00	0.00	0.00
500.0	0.00	0.00	500.0	0.0	0.0	0.0	0.00	0.00	0.00
600.0	0.00	0.00	600.0	0.0	0.0	0.0	0.00	0.00	0.00
700.0	0.00	0.00	700.0	0.0	0.0	0.0	0.00	0.00	0.00
800.0	0.00	0.00	800.0	0.0	0.0	0.0	0.00	0.00	0.00
900.0	0.00	0.00	900.0	0.0	0.0	0.0	0.00	0.00	0.00
1,000.0	0.00	0.00	1,000.0	0.0	0.0	0.0	0.00	0.00	0.00
1,100.0	0.00	0.00	1,100.0	0.0	0.0	0.0	0.00	0.00	0.00
1,189.0	0.00	0.00	1,189.0	0.0	0.0	0.0	0.00	0.00	0.00
9 5/8" Surface									
1,200.0	0.00	0.00	1,200.0	0.0	0.0	0.0	0.00	0.00	0.00
1,300.0	0.00	0.00	1,300.0	0.0	0.0	0.0	0.00	0.00	0.00
1,400.0	0.00	0.00	1,400.0	0.0	0.0	0.0	0.00	0.00	0.00
1,500.0	0.00	0.00	1,500.0	0.0	0.0	0.0	0.00	0.00	0.00
1,600.0	0.00	0.00	1,600.0	0.0	0.0	0.0	0.00	0.00	0.00
1,700.0	0.00	0.00	1,700.0	0.0	0.0	0.0	0.00	0.00	0.00
1,800.0	0.00	0.00	1,800.0	0.0	0.0	0.0	0.00	0.00	0.00
1,900.0	0.00	0.00	1,900.0	0.0	0.0	0.0	0.00	0.00	0.00
2,000.0	0.00	0.00	2,000.0	0.0	0.0	0.0	0.00	0.00	0.00
2,100.0	0.00	0.00	2,100.0	0.0	0.0	0.0	0.00	0.00	0.00
2,200.0	0.00	0.00	2,200.0	0.0	0.0	0.0	0.00	0.00	0.00
2,300.0	0.00	0.00	2,300.0	0.0	0.0	0.0	0.00	0.00	0.00
2,400.0	0.00	0.00	2,400.0	0.0	0.0	0.0	0.00	0.00	0.00
2,500.0	0.00	0.00	2,500.0	0.0	0.0	0.0	0.00	0.00	0.00
2,600.0	0.00	0.00	2,600.0	0.0	0.0	0.0	0.00	0.00	0.00
2,700.0	0.00	0.00	2,700.0	0.0	0.0	0.0	0.00	0.00	0.00
2,800.0	0.00	0.00	2,800.0	0.0	0.0	0.0	0.00	0.00	0.00
2,900.0	0.00	0.00	2,900.0	0.0	0.0	0.0	0.00	0.00	0.00
3,000.0	0.00	0.00	3,000.0	0.0	0.0	0.0	0.00	0.00	0.00
3,100.0	0.00	0.00	3,100.0	0.0	0.0	0.0	0.00	0.00	0.00
3,200.0	0.00	0.00	3,200.0	0.0	0.0	0.0	0.00	0.00	0.00
3,300.0	0.00	0.00	3,300.0	0.0	0.0	0.0	0.00	0.00	0.00
3,400.0	0.00	0.00	3,400.0	0.0	0.0	0.0	0.00	0.00	0.00
3,500.0	0.00	0.00	3,500.0	0.0	0.0	0.0	0.00	0.00	0.00
3,600.0	0.00	0.00	3,600.0	0.0	0.0	0.0	0.00	0.00	0.00
3,700.0	0.00	0.00	3,700.0	0.0	0.0	0.0	0.00	0.00	0.00
3,800.0	0.00	0.00	3,800.0	0.0	0.0	0.0	0.00	0.00	0.00
3,900.0	0.00	0.00	3,900.0	0.0	0.0	0.0	0.00	0.00	0.00
4,000.0	0.00	0.00	4,000.0	0.0	0.0	0.0	0.00	0.00	0.00
4,100.0	0.00	0.00	4,100.0	0.0	0.0	0.0	0.00	0.00	0.00
4,200.0	0.00	0.00	4,200.0	0.0	0.0	0.0	0.00	0.00	0.00
4,300.0	0.00	0.00	4,300.0	0.0	0.0	0.0	0.00	0.00	0.00
4,400.0	0.00	0.00	4,400.0	0.0	0.0	0.0	0.00	0.00	0.00
4,500.0	0.00	0.00	4,500.0	0.0	0.0	0.0	0.00	0.00	0.00
4,600.0	0.00	0.00	4,600.0	0.0	0.0	0.0	0.00	0.00	0.00
4,700.0	0.00	0.00	4,700.0	0.0	0.0	0.0	0.00	0.00	0.00
4,800.0	0.00	0.00	4,800.0	0.0	0.0	0.0	0.00	0.00	0.00
4,900.0	0.00	0.00	4,900.0	0.0	0.0	0.0	0.00	0.00	0.00
5,000.0	0.00	0.00	5,000.0	0.0	0.0	0.0	0.00	0.00	0.00
5,100.0	0.00	0.00	5,100.0	0.0	0.0	0.0	0.00	0.00	0.00

EOG Resources, Inc.

Planning Report

Database:	EDM_DENVER	Local Co-ordinate Reference:	Well Critter Creek 509-1411H
Company:	Denver Division- Colorado	TVD Reference:	RKB @ 5233.0usft (KB GL+25')
Project:	DJ - Hereford Ranch	MD Reference:	RKB @ 5233.0usft (KB GL+25')
Site:	Critter Creek C14 SWSE Pad	North Reference:	True
Well:	Critter Creek 509-1411H	Survey Calculation Method:	Minimum Curvature
Wellbore:	OH		
Design:	AAPD Plan (Plat Cert 4/16/15)		

Planned Survey									
Measured Depth (usft)	Inclination (°)	Azimuth (°)	Vertical Depth (usft)	+N/-S (usft)	+E/-W (usft)	Vertical Section (usft)	Dogleg Rate (°/100usft)	Build Rate (°/100usft)	Turn Rate (°/100usft)
5,200.0	0.00	0.00	5,200.0	0.0	0.0	0.0	0.00	0.00	0.00
5,300.0	0.00	0.00	5,300.0	0.0	0.0	0.0	0.00	0.00	0.00
5,400.0	0.00	0.00	5,400.0	0.0	0.0	0.0	0.00	0.00	0.00
5,500.0	0.00	0.00	5,500.0	0.0	0.0	0.0	0.00	0.00	0.00
5,600.0	0.00	0.00	5,600.0	0.0	0.0	0.0	0.00	0.00	0.00
5,700.0	0.00	0.00	5,700.0	0.0	0.0	0.0	0.00	0.00	0.00
5,800.0	0.00	0.00	5,800.0	0.0	0.0	0.0	0.00	0.00	0.00
5,900.0	0.00	0.00	5,900.0	0.0	0.0	0.0	0.00	0.00	0.00
6,000.0	0.00	0.00	6,000.0	0.0	0.0	0.0	0.00	0.00	0.00
6,100.0	0.00	0.00	6,100.0	0.0	0.0	0.0	0.00	0.00	0.00
6,200.0	0.00	0.00	6,200.0	0.0	0.0	0.0	0.00	0.00	0.00
6,300.0	0.00	0.00	6,300.0	0.0	0.0	0.0	0.00	0.00	0.00
6,400.0	0.00	0.00	6,400.0	0.0	0.0	0.0	0.00	0.00	0.00
6,500.0	0.00	0.00	6,500.0	0.0	0.0	0.0	0.00	0.00	0.00
6,600.0	0.00	0.00	6,600.0	0.0	0.0	0.0	0.00	0.00	0.00
6,700.0	0.00	0.00	6,700.0	0.0	0.0	0.0	0.00	0.00	0.00
6,800.0	0.00	0.00	6,800.0	0.0	0.0	0.0	0.00	0.00	0.00
6,900.0	0.00	0.00	6,900.0	0.0	0.0	0.0	0.00	0.00	0.00
6,977.5	0.00	0.00	6,977.5	0.0	0.0	0.0	0.00	0.00	0.00
7,000.0	2.70	344.90	7,000.0	0.5	-0.1	0.5	12.00	12.00	0.00
7,100.0	14.70	344.90	7,098.7	15.1	-4.1	15.2	12.00	12.00	0.00
7,200.0	26.70	344.90	7,192.0	49.2	-13.3	49.4	12.00	12.00	0.00
7,300.0	38.70	344.90	7,276.0	101.2	-27.3	101.8	12.00	12.00	0.00
7,400.0	50.70	344.90	7,347.0	169.0	-45.6	169.9	12.00	12.00	0.00
7,500.0	62.70	344.90	7,401.8	249.6	-67.3	250.9	12.00	12.00	0.00
7,600.0	74.70	344.90	7,438.0	339.3	-91.6	341.1	12.00	12.00	0.00
7,700.0	86.70	344.90	7,454.2	434.4	-117.2	436.7	12.00	12.00	0.00
7,727.5	90.00	344.90	7,455.0	461.0	-124.4	463.4	12.00	12.00	0.00
7,728.0	90.00	344.92	7,455.0	461.5	-124.5	463.9	3.00	0.00	3.00
7" Intermediate (Opt 2)									
7,800.0	90.00	347.08	7,455.0	531.3	-141.9	534.1	3.00	0.00	3.00
7,900.0	90.00	350.08	7,455.0	629.3	-161.7	632.5	3.00	0.00	3.00
8,000.0	90.00	353.08	7,455.0	728.2	-176.4	731.7	3.00	0.00	3.00
8,100.0	90.00	356.08	7,455.0	827.8	-185.8	831.4	3.00	0.00	3.00
8,200.0	90.00	359.08	7,455.0	927.7	-190.1	931.4	3.00	0.00	3.00
8,230.9	90.00	0.00	7,455.0	958.6	-190.3	962.3	3.00	0.00	3.00
8,300.0	90.00	0.00	7,455.0	1,027.7	-190.3	1,031.3	0.00	0.00	0.00
8,400.0	90.00	0.00	7,455.0	1,127.7	-190.3	1,131.3	0.00	0.00	0.00
8,500.0	90.00	0.00	7,455.0	1,227.7	-190.3	1,231.3	0.00	0.00	0.00
8,600.0	90.00	0.00	7,455.0	1,327.7	-190.3	1,331.3	0.00	0.00	0.00
8,700.0	90.00	0.00	7,455.0	1,427.7	-190.3	1,431.3	0.00	0.00	0.00
8,800.0	90.00	0.00	7,455.0	1,527.7	-190.3	1,531.2	0.00	0.00	0.00
8,900.0	90.00	0.00	7,455.0	1,627.7	-190.3	1,631.2	0.00	0.00	0.00
9,000.0	90.00	0.00	7,455.0	1,727.7	-190.3	1,731.2	0.00	0.00	0.00
9,100.0	90.00	0.00	7,455.0	1,827.7	-190.3	1,831.2	0.00	0.00	0.00
9,200.0	90.00	0.00	7,455.0	1,927.7	-190.3	1,931.2	0.00	0.00	0.00
9,300.0	90.00	0.00	7,455.0	2,027.7	-190.3	2,031.1	0.00	0.00	0.00
9,400.0	90.00	0.00	7,455.0	2,127.7	-190.3	2,131.1	0.00	0.00	0.00
9,500.0	90.00	0.00	7,455.0	2,227.7	-190.2	2,231.1	0.00	0.00	0.00
9,600.0	90.00	0.00	7,455.0	2,327.7	-190.2	2,331.1	0.00	0.00	0.00
9,700.0	90.00	0.00	7,455.0	2,427.7	-190.2	2,431.1	0.00	0.00	0.00
9,800.0	90.00	0.00	7,455.0	2,527.7	-190.2	2,531.0	0.00	0.00	0.00
9,900.0	90.00	0.00	7,455.0	2,627.7	-190.2	2,631.0	0.00	0.00	0.00

EOG Resources, Inc.

Planning Report

Database:	EDM_DENVER	Local Co-ordinate Reference:	Well Critter Creek 509-1411H
Company:	Denver Division- Colorado	TVD Reference:	RKB @ 5233.0usft (KB GL+25')
Project:	DJ - Hereford Ranch	MD Reference:	RKB @ 5233.0usft (KB GL+25')
Site:	Critter Creek C14 SWSE Pad	North Reference:	True
Well:	Critter Creek 509-1411H	Survey Calculation Method:	Minimum Curvature
Wellbore:	OH		
Design:	AAPD Plan (Plat Cert 4/16/15)		

Planned Survey									
Measured Depth (usft)	Inclination (°)	Azimuth (°)	Vertical Depth (usft)	+N/-S (usft)	+E/-W (usft)	Vertical Section (usft)	Dogleg Rate (°/100usft)	Build Rate (°/100usft)	Turn Rate (°/100usft)
10,000.0	90.00	0.00	7,455.0	2,727.7	-190.2	2,731.0	0.00	0.00	0.00
10,100.0	90.00	0.00	7,455.0	2,827.7	-190.2	2,831.0	0.00	0.00	0.00
10,200.0	90.00	0.00	7,455.0	2,927.7	-190.2	2,931.0	0.00	0.00	0.00
10,300.0	90.00	0.00	7,455.0	3,027.7	-190.2	3,030.9	0.00	0.00	0.00
10,400.0	90.00	0.00	7,455.0	3,127.7	-190.2	3,130.9	0.00	0.00	0.00
10,500.0	90.00	0.00	7,455.0	3,227.7	-190.2	3,230.9	0.00	0.00	0.00
10,600.0	90.00	0.00	7,455.0	3,327.7	-190.2	3,330.9	0.00	0.00	0.00
10,700.0	90.00	0.00	7,455.0	3,427.7	-190.2	3,430.8	0.00	0.00	0.00
10,800.0	90.00	0.00	7,455.0	3,527.7	-190.2	3,530.8	0.00	0.00	0.00
10,900.0	90.00	0.00	7,455.0	3,627.7	-190.2	3,630.8	0.00	0.00	0.00
11,000.0	90.00	0.00	7,455.0	3,727.7	-190.2	3,730.8	0.00	0.00	0.00
11,100.0	90.00	0.00	7,455.0	3,827.7	-190.2	3,830.8	0.00	0.00	0.00
11,200.0	90.00	0.00	7,455.0	3,927.7	-190.1	3,930.7	0.00	0.00	0.00
11,300.0	90.00	0.00	7,455.0	4,027.7	-190.1	4,030.7	0.00	0.00	0.00
11,400.0	90.00	0.00	7,455.0	4,127.7	-190.1	4,130.7	0.00	0.00	0.00
11,500.0	90.00	0.00	7,455.0	4,227.7	-190.1	4,230.7	0.00	0.00	0.00
11,600.0	90.00	0.00	7,455.0	4,327.7	-190.1	4,330.7	0.00	0.00	0.00
11,700.0	90.00	0.00	7,455.0	4,427.7	-190.1	4,430.6	0.00	0.00	0.00
11,800.0	90.00	0.00	7,455.0	4,527.7	-190.1	4,530.6	0.00	0.00	0.00
11,900.0	90.00	0.00	7,455.0	4,627.7	-190.1	4,630.6	0.00	0.00	0.00
12,000.0	90.00	0.00	7,455.0	4,727.7	-190.1	4,730.6	0.00	0.00	0.00
12,100.0	90.00	0.00	7,455.0	4,827.7	-190.1	4,830.6	0.00	0.00	0.00
12,200.0	90.00	0.00	7,455.0	4,927.7	-190.1	4,930.5	0.00	0.00	0.00
12,300.0	90.00	0.00	7,455.0	5,027.7	-190.1	5,030.5	0.00	0.00	0.00
12,400.0	90.00	0.00	7,455.0	5,127.7	-190.1	5,130.5	0.00	0.00	0.00
12,500.0	90.00	0.00	7,455.0	5,227.7	-190.1	5,230.5	0.00	0.00	0.00
12,600.0	90.00	0.00	7,455.0	5,327.7	-190.1	5,330.4	0.00	0.00	0.00
12,700.0	90.00	0.00	7,455.0	5,427.7	-190.1	5,430.4	0.00	0.00	0.00
12,800.0	90.00	0.00	7,455.0	5,527.7	-190.1	5,530.4	0.00	0.00	0.00
12,900.0	90.00	0.00	7,455.0	5,627.7	-190.1	5,630.4	0.00	0.00	0.00
13,000.0	90.00	0.00	7,455.0	5,727.7	-190.0	5,730.4	0.00	0.00	0.00
13,100.0	90.00	0.00	7,455.0	5,827.7	-190.0	5,830.3	0.00	0.00	0.00
13,200.0	90.00	0.00	7,455.0	5,927.7	-190.0	5,930.3	0.00	0.00	0.00
13,300.0	90.00	0.00	7,455.0	6,027.7	-190.0	6,030.3	0.00	0.00	0.00
13,400.0	90.00	0.00	7,455.0	6,127.7	-190.0	6,130.3	0.00	0.00	0.00
13,500.0	90.00	0.00	7,455.0	6,227.7	-190.0	6,230.3	0.00	0.00	0.00
13,600.0	90.00	0.00	7,455.0	6,327.7	-190.0	6,330.2	0.00	0.00	0.00
13,700.0	90.00	0.00	7,455.0	6,427.7	-190.0	6,430.2	0.00	0.00	0.00
13,800.0	90.00	0.00	7,455.0	6,527.7	-190.0	6,530.2	0.00	0.00	0.00
13,900.0	90.00	0.00	7,455.0	6,627.7	-190.0	6,630.2	0.00	0.00	0.00
14,000.0	90.00	0.00	7,455.0	6,727.7	-190.0	6,730.2	0.00	0.00	0.00
14,100.0	90.00	0.00	7,455.0	6,827.7	-190.0	6,830.1	0.00	0.00	0.00
14,200.0	90.00	0.00	7,455.0	6,927.7	-190.0	6,930.1	0.00	0.00	0.00
14,300.0	90.00	0.00	7,455.0	7,027.7	-190.0	7,030.1	0.00	0.00	0.00
14,400.0	90.00	0.00	7,455.0	7,127.7	-190.0	7,130.1	0.00	0.00	0.00
14,500.0	90.00	0.00	7,455.0	7,227.7	-190.0	7,230.0	0.00	0.00	0.00
14,600.0	90.00	0.00	7,455.0	7,327.7	-190.0	7,330.0	0.00	0.00	0.00
14,700.0	90.00	0.00	7,455.0	7,427.7	-189.9	7,430.0	0.00	0.00	0.00
14,800.0	90.00	0.00	7,455.0	7,527.7	-189.9	7,530.0	0.00	0.00	0.00
14,900.0	90.00	0.00	7,455.0	7,627.7	-189.9	7,630.0	0.00	0.00	0.00
15,000.0	90.00	0.00	7,455.0	7,727.7	-189.9	7,729.9	0.00	0.00	0.00
15,100.0	90.00	0.00	7,455.0	7,827.7	-189.9	7,829.9	0.00	0.00	0.00
15,200.0	90.00	0.00	7,455.0	7,927.7	-189.9	7,929.9	0.00	0.00	0.00
15,300.0	90.00	0.00	7,455.0	8,027.7	-189.9	8,029.9	0.00	0.00	0.00

EOG Resources, Inc.

Planning Report

Database:	EDM_DENVER	Local Co-ordinate Reference:	Well Critter Creek 509-1411H
Company:	Denver Division- Colorado	TVD Reference:	RKB @ 5233.0usft (KB GL+25')
Project:	DJ - Hereford Ranch	MD Reference:	RKB @ 5233.0usft (KB GL+25')
Site:	Critter Creek C14 SWSE Pad	North Reference:	True
Well:	Critter Creek 509-1411H	Survey Calculation Method:	Minimum Curvature
Wellbore:	OH		
Design:	AAPD Plan (Plat Cert 4/16/15)		

Planned Survey										
Measured Depth (usft)	Inclination (°)	Azimuth (°)	Vertical Depth (usft)	+N/-S (usft)	+E/-W (usft)	Vertical Section (usft)	Dogleg Rate (°/100usft)	Build Rate (°/100usft)	Turn Rate (°/100usft)	
15,400.0	90.00	0.00	7,455.0	8,127.7	-189.9	8,129.9	0.00	0.00	0.00	
15,500.0	90.00	0.00	7,455.0	8,227.7	-189.9	8,229.8	0.00	0.00	0.00	
15,600.0	90.00	0.00	7,455.0	8,327.7	-189.9	8,329.8	0.00	0.00	0.00	
15,700.0	90.00	0.00	7,455.0	8,427.7	-189.9	8,429.8	0.00	0.00	0.00	
15,800.0	90.00	0.00	7,455.0	8,527.7	-189.9	8,529.8	0.00	0.00	0.00	
15,900.0	90.00	0.00	7,455.0	8,627.7	-189.9	8,629.8	0.00	0.00	0.00	
16,000.0	90.00	0.00	7,455.0	8,727.7	-189.9	8,729.7	0.00	0.00	0.00	
16,100.0	90.00	0.00	7,455.0	8,827.7	-189.9	8,829.7	0.00	0.00	0.00	
16,200.0	90.00	0.00	7,455.0	8,927.7	-189.9	8,929.7	0.00	0.00	0.00	
16,300.0	90.00	0.00	7,455.0	9,027.7	-189.9	9,029.7	0.00	0.00	0.00	
16,400.0	90.00	0.00	7,455.0	9,127.7	-189.8	9,129.6	0.00	0.00	0.00	
16,500.0	90.00	0.00	7,455.0	9,227.7	-189.8	9,229.6	0.00	0.00	0.00	
16,553.0	90.00	0.00	7,455.0	9,280.7	-189.8	9,282.6	0.00	0.00	0.00	
5 1/2" Prod (Opt 1) - 4 1/2" Liner (Opt 2)										
16,553.8	90.00	0.00	7,455.0	9,281.5	-189.8	9,283.4	0.00	0.00	0.00	

Design Targets										
Target Name	Dip Angle (°)	Dip Dir. (°)	TVD (usft)	+N/-S (usft)	+E/-W (usft)	Northing (usft)	Easting (usft)	Latitude	Longitude	
- hit/miss target										
- Shape										
Critter Creek 509-1411H	0.00	0.00	7,455.0	9,281.5	-189.8	588,090.40	2,304,343.50	40° 56' 33.041 N	104° 23' 54.350 W	
- plan hits target center										
- Point										

Casing Points						
Measured Depth (usft)	Vertical Depth (usft)	Name	Casing Diameter (")	Hole Diameter (")		
1,189.0	1,189.0	9 5/8" Surface	9-5/8	13-1/2		
7,728.0	7,455.0	7" Intermediate (Opt 2)	7	8-3/4		
16,553.0	7,455.0	5 1/2" Prod (Opt 1)	0	7-7/8		
16,553.0	7,455.0	4 1/2" Liner (Opt 2)	4-1/2	6-1/8		