


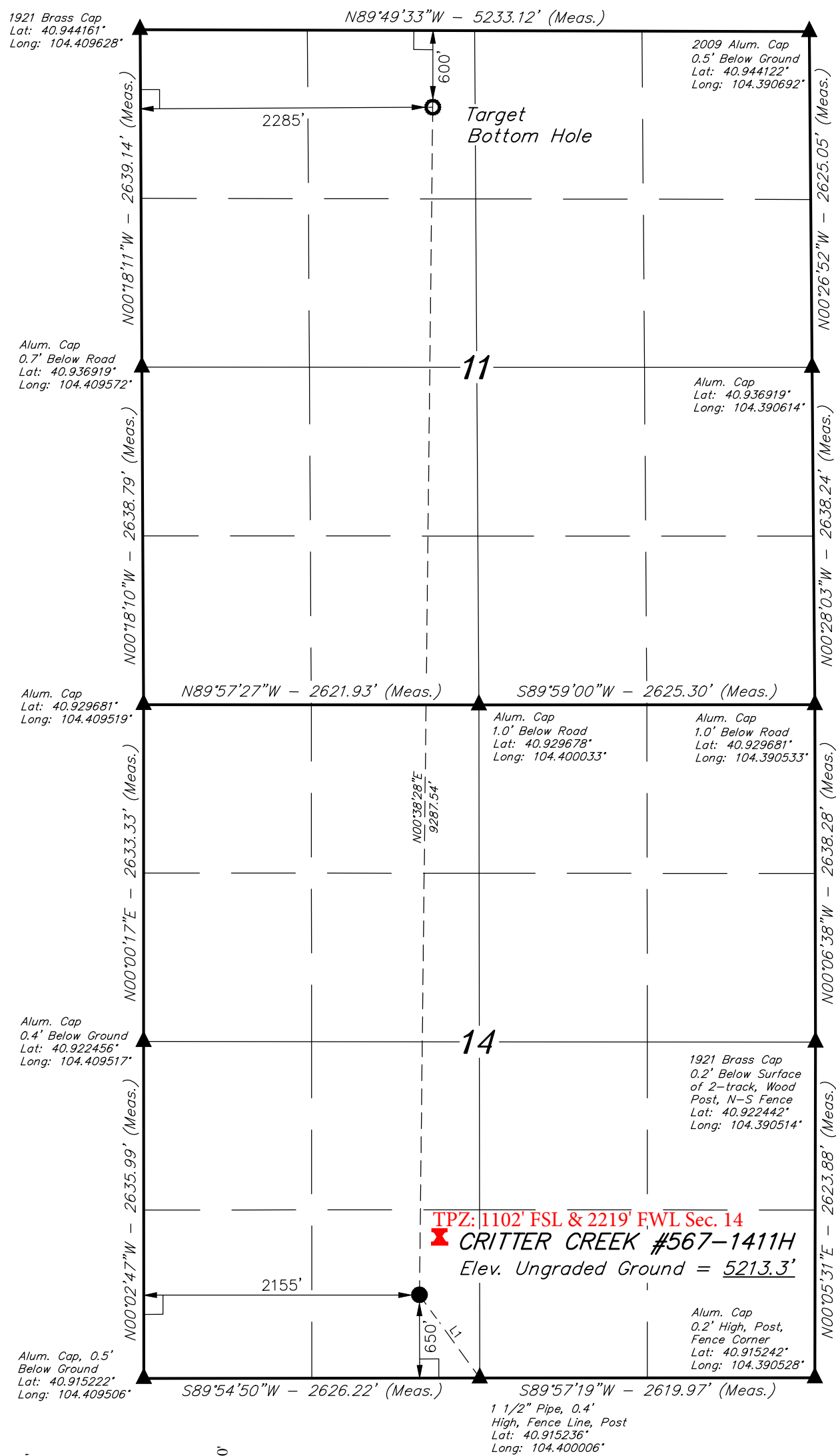


*T11N, R63W, 6th P.M.*

 = PROPOSED WELLHEAD.  
 = TARGET BOTTOM HOLE.  
 = SECTION CORNERS  
 LOCATED.



LINE TABLE		
LINE	DIRECTION	LENGTH
L1	N35°59'56"W	802.59'

**PDOP = 1.3**



<b>NAD 83 (TARGET BOTTOM HOLE)</b>	<b>NAD 83 (SURFACE LOCATION)</b>
LATITUDE = 40°56'33.00" (40.942500)	LATITUDE = 40°55'01.26" (40.917017)
LONGITUDE = 104°24'04.85" (104.401347)	LONGITUDE = 104°24'06.16" (104.401711)
<b>NAD 27 (TARGET BOTTOM HOLE)</b>	<b>NAD 27 (SURFACE LOCATION)</b>
LATITUDE = 40°56'33.06" (40.942517)	LATITUDE = 40°55'01.32" (40.917033)
LONGITUDE = 104°24'03.01" (104.400836)	LONGITUDE = 104°24'04.32" (104.401200)
<b>STATE PLANE NAD 83 (CO. NORTH)</b>	<b>STATE PLANE NAD 83 (CO. NORTH)</b>
N: 1588086.17 E: 3303529.84	N: 1578800.77 E: 3303543.92
<b>STATE PLANE NAD 27 (CO. NORTH)</b>	<b>STATE PLANE NAD 27 (CO. NORTH)</b>
N: 588083.98 E: 2303679.27	N: 578798.75 E: 2303693.29

# CERTIFICATE

THIS IS TO CERTIFY THAT THE ABOVE PLAT WAS PREPARED FROM FIELD  
NOTES OF ACTUAL SURVEYS MADE BY ME OR UNDER MY SUPERVISION  
AND THAT THE SAME ARE TRUE AND CORRECT TO THE BEST OF MY  
KNOWLEDGE AND BELIEF.

REGISTERED LAND SURVEYOR  
REGISTRATION NO. 28285  
STATE OF COLORADO

## BASIS OF BEARINGS

### BASIS OF BEARINGS IS A G.P.S. OBSERVATION

## BASIS OF ELEVATION

SPOT ELEVATION AT THE NORTHEAST CORNER OF SECTION 1, T11N, R63W, 6th P.M., TAKEN FROM THE HEREFORD, QUADRANGLE, COLORADO, WELD COUNTY, 7.5 MINUTE QUAD. (TOPOGRAPHIC MAP) PUBLISHED BY THE UNITED STATES DEPARTMENT OF THE INTERIOR, GEOLOGICAL SURVEY. SAID ELEVATION IS MARKED AS BEING 5352 FEET.



**UELS, LLC**  
Corporate Office \* 85 South 200 East  
Vernal, UT 84078 \* (435) 789-1017

**EOG RESOURCES, INC.**

**CRITTER CREEK #567-1411H**  
**SE 1/4 SW 1/4, SECTION 14, T11N, R63W, 6th P.M.**  
**WELD COUNTY, COLORADO**

SURVEYED BY: CHAD MEIERS, C.M.	DATE: 04-06-15
DRAWN BY: M.O.E.	DATE DRAWN: 04-08-15
SCALE: 1" = 1000'	REVISED: 00-00-00

## WELL LOCATION PLAT