

LEGEND:

 PROPOSED LOCATION

EOG RESOURCES, INC.

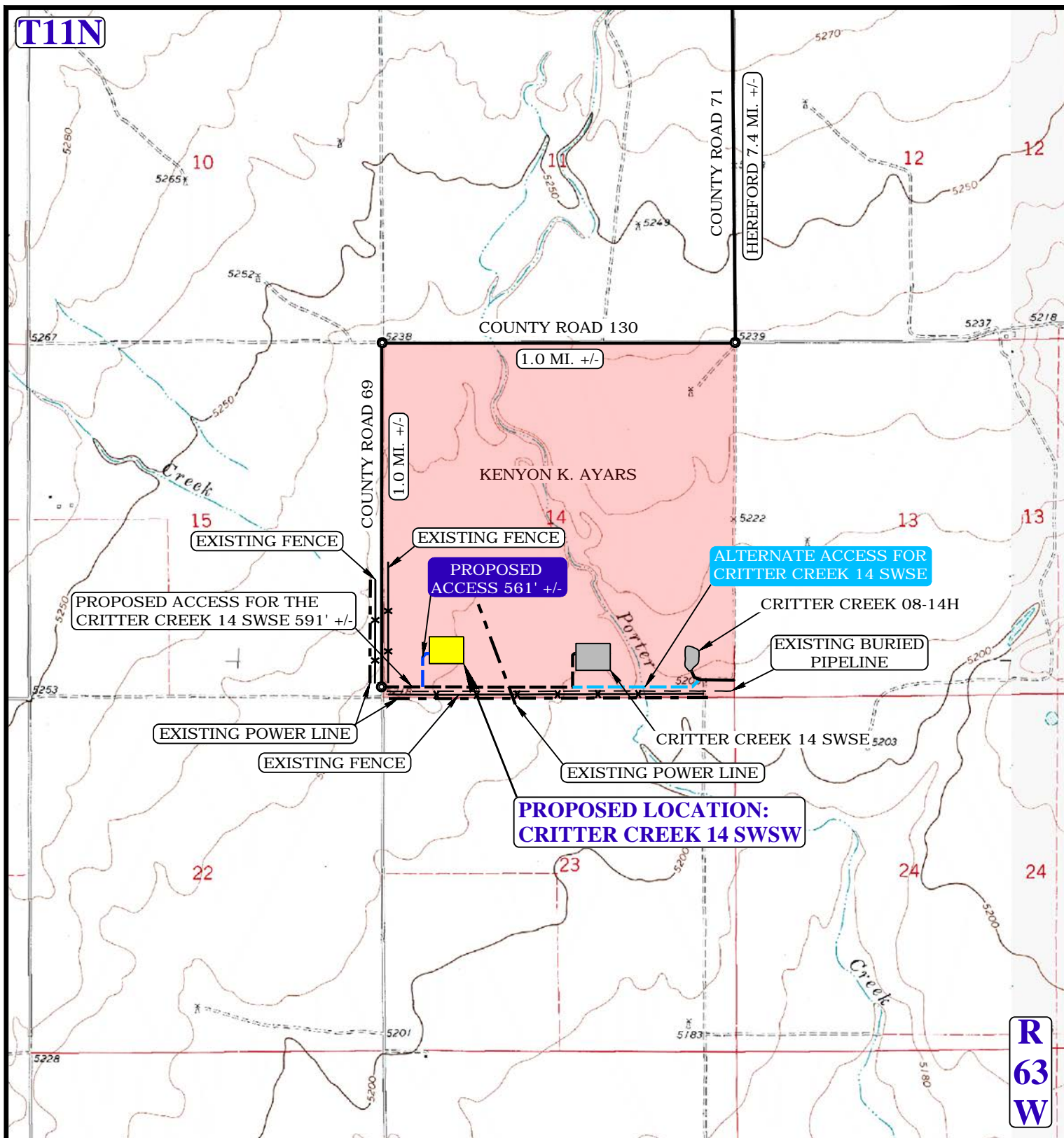
CRITTER CREEK 14 SWSW
SECTION 14, T11N, R63W, 6th P.M.
SW 1/4 SW 1/4
WELD COUNTY, COLORADO



UELS, LLC
 Corporate Office * 85 South 200 East
 Vernal, UT 84078 * (435) 789-1017



DRAWN BY: C.M.F.	DATE DRAWN: 04-10-15
SCALE: 1:100,000	REVISED: 00-00-00
ACCESS ROAD MAP	TOPO A



NOTE: PARCEL DATA SHOWN HAS BEEN OBTAINED FROM VARIOUS SOURCES AND SHOULD BE USED FOR MAPPING, GRAPHIC AND PLANNING PURPOSES ONLY. NO WARRANTY IS MADE BY UINTAH ENGINEERING AND LAND SURVEYING (UELS) FOR ACCURACY OF THE PARCEL DATA.

LEGEND:

	EXISTING ROAD
	PROPOSED ROAD
	EXISTING FENCE
	EXISTING POWERLINE
	EXISTING BURIED PIPELINE
	PROPOSED ALTERNATE ROUTE

EOG RESOURCES, INC.

CRITTER CREEK 14 SWSW
SECTION 14, T11N, R63W, 6th P.M.
SW 1/4 SW 1/4
WELD COUNTY, COLORADO



UELS, LLC
Corporate Office * 85 South 200 East
Vernal, UT 84078 * (435) 789-1017



DRAWN BY: C.M.F.	DATE DRAWN: 04-10-15
SCALE: 1" = 2000'	REVISED: 00-00-00
ACCESS ROAD MAP	TOPO B