

1801 Broadway
Suite 500
Denver, Colorado 80202



Allison Linz
Regulatory Technician
Tel: 303.398.0355
E-mail: alinz@gwogco.com

September 3, 2015

Colorado Oil and Gas Conservation Commission
1120 Lincoln Street, Suite 801
Denver, Colorado 80203

RE: **Proposed Wellbore Spacing Unit**
Schneider HD 11-352HN

Niobrara New Drill
Township 4 North, Range 66 West, 6th P.M.
SWSW Section 7
Weld County, Colorado

Dear Director:

Great Western Operating Company, LLC is planning to drill the above captioned well in accordance with the provisions of COGCC Rule 318A.e.

Great Western proposed wellbore spacing unit consists of:

- **SE/4 Section 11, S/2 Section 12**
- **480 Acres**

The 30 day notification time period has passed and we have not received any objections to such well locations or proposed spacing unit, therefore Great Western hereby requests the Director to approve the above mentioned well. Great Western Operating Company, LLC respectfully requests that the COGCC review the enclosed map illustrating the proposed wellbore spacing unit.

Respectfully,

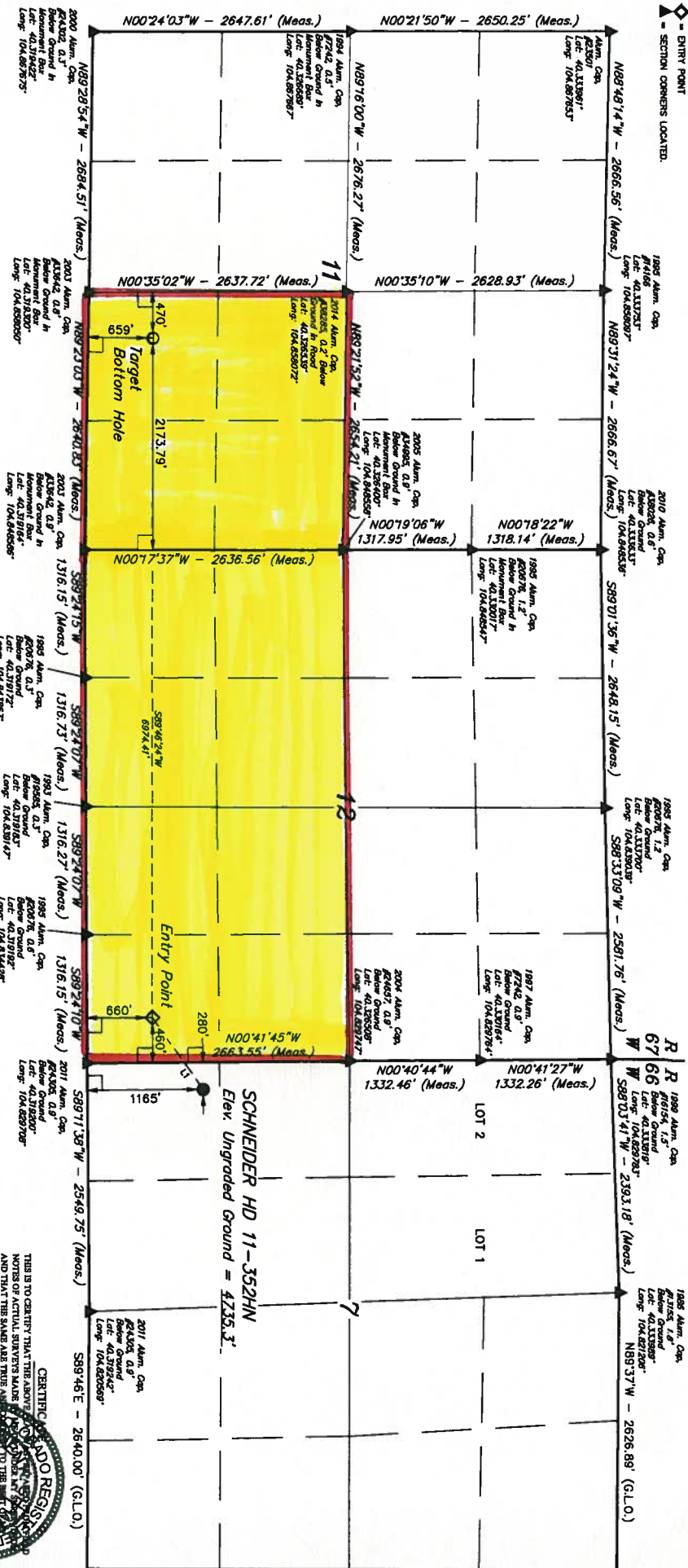
Allison Linz

Allison Linz
Regulatory Technician
Great Western Operating Company, LLC

LEGEND:

- 80' SYMBOL
- PROPOSED WELLHEAD
- TARGET BOTTOM HOLE
- ENTRY POINT
- SECTION CORNERS LOCATED

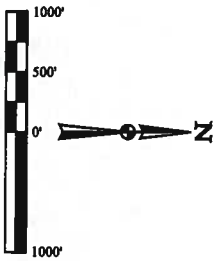
T4N, R66W, 6th P.M.



BASIS OF BEARINGS
BASIS OF ELEVATION

USGS COOPERATIVE BASE NETWORK CONTROL STATION,
DESIGNATION "VERMILION" NOS DATA SHEET LISTS THE
NAVD 88 ELEVATION AS BEING 5026 FEET.

UTAH
Corporate Office - 85 South 200 East
Vernal, UT 84078 - (435) 783-1817



LINE TABLE		
LINE	DIRECTION	LENGTH
L1	S54°59'45\"W	885.87'

NAD 83 (GARS) BOTTOM POINT		NAD 83 (ENTRY POINT)		NAD 83 (SURFACE LOCATION)	
LATITUDE	40°17'15.8\"N	LATITUDE	40°17'15.8\"N	LATITUDE	40°17'15.8\"N
LONGITUDE	-106°11'22.9\"W	LONGITUDE	-106°11'22.9\"W	LONGITUDE	-106°11'22.9\"W
NAD 83 (GARS) BOTTOM POINT		NAD 83 (ENTRY POINT)		NAD 83 (SURFACE LOCATION)	
LATITUDE	40°17'15.8\"N	LATITUDE	40°17'15.8\"N	LATITUDE	40°17'15.8\"N
LONGITUDE	-106°11'22.9\"W	LONGITUDE	-106°11'22.9\"W	LONGITUDE	-106°11'22.9\"W

PDOP = 1.4

GREAT WESTERN OIL & GAS COMPANY
SW 1/4 SW 1/4 SECTION 11, T4N, R66W, 6th P.M.
WELD COUNTY, COLORADO
SURVEYED BY: DALLAS NIELSEN, J.S.
DATE: 08-18-14
DRAWN BY: J.W.
DATE: 08-18-14
REVISOR: 10-16-14
WELL LOCATION PLAN

CERTIFICATE AND RECORD
NOTES OF ACTUAL SURVEY MADE
AND THAT THE SAME ARE TRUE AND
KNOWLEDGE AND BELIEF.
STATE OF COLORADO
COUNTY OF WELD
JUL 18 2014
JUL 18 2014

NORTH - 5280.00' (G.L.O.)