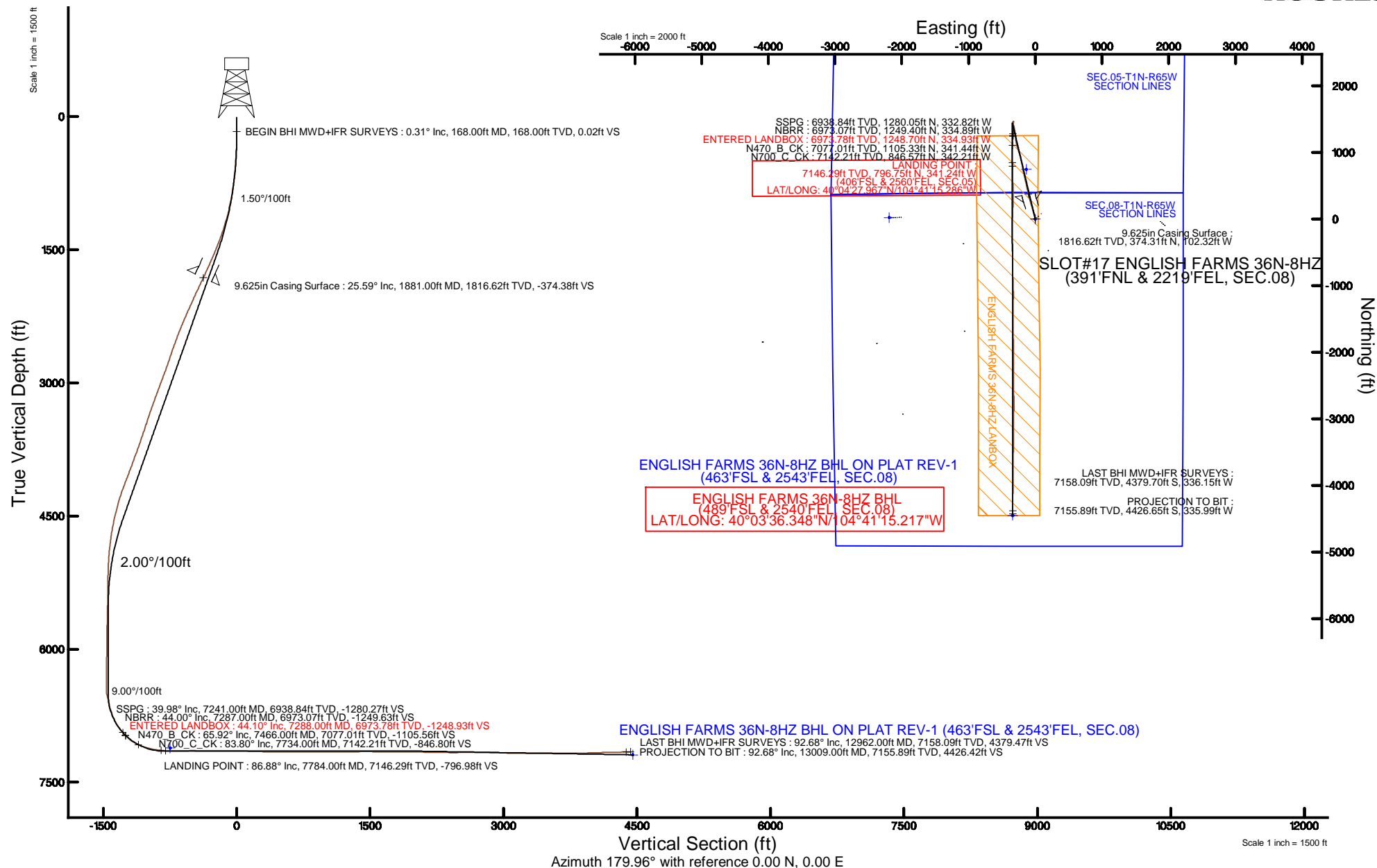


Location:	COLORADO	Slot:	SLOT#17 ENGLISH FARMS 36N-8HZ (391'FNL & 2219'FEL, SEC.08)
Field:	WELD COUNTY (UTM/TRUE NORTH)	Well:	ENGLISH FARMS 36N-8HZ
Facility:	SEC.08-T1N-R65W	Wellbore:	ENGLISH FARMS 36N-8HZ PWB

Plot reference wellpath is ENGLISH FARMS 36N-8HZ (REV-A.0) PWP	
True vertical depths are referenced to XTREME 24 (16'KB) (RKB)	Grid System: NAD83 / UTM Zone 13 North, US feet
Measured depths are referenced to XTREME 24 (16'KB) (RKB)	North Reference: True north
XTREME 24 (16'KB) (RKB) to Mean Sea Level: 4964 feet	Scale: True distance
Mean Sea Level to Mud line (At Slot: SLOT#17 ENGLISH FARMS 36N-8HZ (391'FNL & 2219'FEL, SEC.0)): 0 feet	Depths are in feet
Coordinates are in feet referenced to Slot:	Created by: amarcas on 27/Jul/2015





# Actual Wellpath Report

ENGLISH FARMS 36N-8HZ AWP  
Page 1 of 6



## REFERENCE WELLPATH IDENTIFICATION

Operator	KERR-MCGEE OIL & GAS ONSHORE LP (WA)	Slot	SLOT#17 ENGLISH FARMS 36N-8HZ (391'FNL & 2219'FEL, SEC.08)
Area	COLORADO	Well	ENGLISH FARMS 36N-8HZ
Field	WELD COUNTY (UTM/TRUE NORTH)	Wellbore	ENGLISH FARMS 36N-8HZ AWB <13009>
Facility	SEC.08-T1N-R65W		

## REPORT SETUP INFORMATION

Projection System	NAD83 / UTM Zone 13 North, US feet	Software System	WellArchitect® 4.0.0
North Reference	True	User	Amarcar
Scale	0.999609	Report Generated	27/Jul/2015 at 13:38
Convergence at slot	0.20° East	Database/Source file	KERR MCGEE UTM/ENGLISH_FARMS_36N-8HZ_AWB__13009_.xml

## WELLPATH LOCATION

	Local coordinates		Grid coordinates		Geographic coordinates	
	North[ft]	East[ft]	Easting[US ft]	Northing[US ft]	Latitude	Longitude
Slot Location	363.63	-1561.66	1728159.28	14553196.68	40°04'20.093"N	104°41'10.896"W
Facility Reference Pt			1729721.63	14552838.79	40°04'16.500"N	104°40'50.808"W
Field Reference Pt			1698235.31	14552047.82	40°04'09.600"N	104°47'36.000"W

## WELLPATH DATUM

Calculation method	Minimum curvature	XTREME 24 (16'KB) (RKB) to Facility Vertical Datum	4964.00ft
Horizontal Reference Pt	Slot	XTREME 24 (16'KB) (RKB) to Mean Sea Level	4964.00ft
Vertical Reference Pt	XTREME 24 (16'KB) (RKB)	XTREME 24 (16'KB) (RKB) to Mud Line at Slot (SLOT#17 ENGLISH FARMS 36N-8HZ (391'FNL & 2219'FEL, SEC.08))	4964.00ft
MD Reference Pt	XTREME 24 (16'KB) (RKB)	Section Origin	N 0.00, E 0.00 ft
Field Vertical Reference	Mean Sea Level	Section Azimuth	179.96°

## REFERENCE WELLPATH IDENTIFICATION

Operator	KERR-MCGEE OIL & GAS ONSHORE LP (WA)	Slot	SLOT#17 ENGLISH FARMS 36N-8HZ (391'FNL & 2219'FEL, SEC.08)
Area	COLORADO	Well	ENGLISH FARMS 36N-8HZ
Field	WELD COUNTY (UTM/TRUE NORTH)	Wellbore	ENGLISH FARMS 36N-8HZ AWB <13009>
Facility	SEC.08-T1N-R65W		

## WELLPATH DATA (132 stations) † = interpolated/extrapolated station

MD [ft]	Inclination [°]	Azimuth [°]	TVD [ft]	Vert Sect [ft]	North [ft]	East [ft]	Latitude	Longitude	DLS [°/100ft]	Comments
0.00†	0.000	92.470	0.00	0.00	0.00	0.00	40°04'20.093"N	104°41'10.896"W	0.00	
16.00	0.000	92.470	16.00	0.00	0.00	0.00	40°04'20.093"N	104°41'10.896"W	0.00	
168.00	0.310	92.470	168.00	0.02	-0.02	0.41	40°04'20.093"N	104°41'10.891"W	0.20	BEGIN BHI MWD+IFR SURVEYS
229.00	0.250	65.890	229.00	-0.03	0.03	0.70	40°04'20.093"N	104°41'10.887"W	0.23	
326.00	1.510	8.110	325.99	-1.38	1.38	1.07	40°04'20.107"N	104°41'10.882"W	1.44	
421.00	3.010	351.650	420.91	-5.09	5.09	0.88	40°04'20.143"N	104°41'10.885"W	1.70	
516.00	3.840	350.850	515.74	-10.70	10.70	0.02	40°04'20.199"N	104°41'10.896"W	0.88	
611.00	5.470	344.190	610.42	-18.20	18.19	-1.72	40°04'20.273"N	104°41'10.918"W	1.80	
706.00	6.780	345.790	704.88	-27.99	27.99	-4.33	40°04'20.370"N	104°41'10.952"W	1.39	
801.00	8.800	344.620	799.00	-40.44	40.43	-7.64	40°04'20.493"N	104°41'10.994"W	2.13	
896.00	9.770	344.880	892.75	-55.23	55.22	-11.67	40°04'20.639"N	104°41'11.046"W	1.02	
990.00	12.400	344.690	984.99	-72.67	72.66	-16.41	40°04'20.811"N	104°41'11.107"W	2.80	
1085.00	14.630	341.450	1077.36	-93.89	93.87	-22.92	40°04'21.021"N	104°41'11.191"W	2.48	
1180.00	16.530	342.740	1168.86	-118.18	118.15	-30.75	40°04'21.261"N	104°41'11.292"W	2.03	
1275.00	18.750	343.240	1259.39	-145.71	145.68	-39.17	40°04'21.533"N	104°41'11.400"W	2.34	
1370.00	20.470	344.220	1348.87	-176.32	176.29	-48.09	40°04'21.835"N	104°41'11.515"W	1.84	
1464.00	22.420	344.060	1436.36	-209.39	209.35	-57.48	40°04'22.162"N	104°41'11.635"W	2.08	
1559.00	23.140	342.830	1523.95	-244.65	244.60	-67.97	40°04'22.510"N	104°41'11.770"W	0.91	
1654.00	24.490	344.070	1610.86	-281.43	281.37	-78.88	40°04'22.874"N	104°41'11.911"W	1.52	
1749.00	24.750	345.110	1697.23	-319.59	319.53	-89.40	40°04'23.251"N	104°41'12.046"W	0.53	
1838.00	25.470	347.570	1777.82	-356.29	356.22	-98.30	40°04'23.613"N	104°41'12.161"W	1.42	
1953.00	25.780	347.050	1881.51	-404.82	404.74	-109.23	40°04'24.093"N	104°41'12.301"W	0.33	
2048.00	25.700	347.870	1967.08	-445.09	445.01	-118.19	40°04'24.491"N	104°41'12.416"W	0.38	
2143.00	25.090	347.650	2052.90	-484.91	484.83	-126.82	40°04'24.884"N	104°41'12.527"W	0.65	
2238.00	24.750	347.740	2139.06	-524.03	523.94	-135.35	40°04'25.271"N	104°41'12.637"W	0.36	
2333.00	24.020	347.710	2225.58	-562.36	562.26	-143.69	40°04'25.649"N	104°41'12.744"W	0.77	
2428.00	23.220	347.620	2312.62	-599.55	599.45	-151.82	40°04'26.017"N	104°41'12.849"W	0.84	
2523.00	22.160	347.270	2400.27	-635.32	635.22	-159.79	40°04'26.370"N	104°41'12.951"W	1.12	
2618.00	21.030	347.320	2488.60	-669.44	669.32	-167.48	40°04'26.707"N	104°41'13.050"W	1.19	
2712.00	20.350	347.410	2576.53	-701.85	701.73	-174.74	40°04'27.028"N	104°41'13.144"W	0.72	
2807.00	18.860	347.430	2666.02	-732.96	732.84	-181.68	40°04'27.335"N	104°41'13.233"W	1.57	
2902.00	19.000	352.220	2755.89	-763.28	763.15	-187.12	40°04'27.635"N	104°41'13.303"W	1.64	
2996.00	20.060	350.620	2844.48	-794.35	794.22	-191.82	40°04'27.942"N	104°41'13.363"W	1.26	
3091.00	21.150	348.010	2933.41	-827.19	827.06	-198.04	40°04'28.266"N	104°41'13.443"W	1.50	
3186.00	20.160	348.080	3022.30	-859.98	859.84	-204.98	40°04'28.590"N	104°41'13.533"W	1.04	
3281.00	21.070	346.040	3111.22	-892.58	892.43	-212.48	40°04'28.912"N	104°41'13.629"W	1.22	
3376.00	19.730	345.840	3200.26	-924.71	924.56	-220.52	40°04'29.230"N	104°41'13.733"W	1.41	
3470.00	21.070	344.570	3288.36	-956.38	956.23	-228.90	40°04'29.543"N	104°41'13.840"W	1.50	
3565.00	18.560	342.030	3377.73	-987.24	987.08	-238.11	40°04'29.847"N	104°41'13.959"W	2.79	
3660.00	19.520	342.910	3467.53	-1016.80	1016.63	-247.44	40°04'30.140"N	104°41'14.079"W	1.05	
3755.00	19.410	341.270	3557.10	-1046.93	1046.75	-257.17	40°04'30.437"N	104°41'14.204"W	0.59	
3850.00	19.210	342.980	3646.76	-1076.83	1076.65	-266.81	40°04'30.733"N	104°41'14.328"W	0.63	
3945.00	20.890	344.460	3736.00	-1108.10	1107.91	-275.93	40°04'31.042"N	104°41'14.445"W	1.85	
4040.00	20.930	348.210	3824.74	-1141.03	1140.84	-283.93	40°04'31.367"N	104°41'14.548"W	1.41	
4135.00	19.430	353.150	3913.92	-1173.34	1173.14	-289.28	40°04'31.686"N	104°41'14.617"W	2.39	

## REFERENCE WELLPATH IDENTIFICATION

Operator	KERR-MCGEE OIL & GAS ONSHORE LP (WA)	Slot	SLOT#17 ENGLISH FARMS 36N-8HZ (391'FNL & 2219'FEL, SEC.08)
Area	COLORADO	Well	ENGLISH FARMS 36N-8HZ
Field	WELD COUNTY (UTM/TRUE NORTH)	Wellbore	ENGLISH FARMS 36N-8HZ AWP <13009>
Facility	SEC.08-T1N-R65W		

## WELLPATH DATA (132 stations) † = interpolated/extrapolated station

MD [ft]	Inclination [°]	Azimuth [°]	TVD [ft]	Vert Sect [ft]	North [ft]	East [ft]	Latitude	Longitude	DLS [°/100ft]	Comments
4230.00	21.330	354.830	4002.97	-1206.24	1206.04	-292.73	40°04'32.011"N	104°41'14.662"W	2.09	
4324.00	20.760	354.140	4090.70	-1239.84	1239.64	-295.97	40°04'32.343"N	104°41'14.703"W	0.66	
4419.00	20.490	353.670	4179.61	-1273.12	1272.92	-299.52	40°04'32.672"N	104°41'14.749"W	0.33	
4514.00	18.230	351.870	4269.23	-1304.36	1304.16	-303.46	40°04'32.981"N	104°41'14.800"W	2.46	
4608.00	15.730	349.080	4359.13	-1331.44	1331.23	-307.95	40°04'33.248"N	104°41'14.857"W	2.80	
4704.00	13.800	348.090	4451.95	-1355.42	1355.21	-312.78	40°04'33.485"N	104°41'14.920"W	2.03	
4799.00	13.360	347.170	4544.30	-1377.21	1377.00	-317.55	40°04'33.701"N	104°41'14.981"W	0.52	
4894.00	10.380	344.080	4637.26	-1396.15	1395.93	-322.34	40°04'33.888"N	104°41'15.043"W	3.21	
4988.00	8.640	342.910	4729.96	-1411.05	1410.83	-326.74	40°04'34.035"N	104°41'15.099"W	1.86	
5083.00	7.130	339.000	4824.06	-1423.38	1423.15	-330.95	40°04'34.157"N	104°41'15.153"W	1.69	
5178.00	5.360	332.830	4918.49	-1432.83	1432.61	-335.09	40°04'34.250"N	104°41'15.207"W	1.99	
5273.00	4.020	336.950	5013.17	-1439.85	1439.62	-338.42	40°04'34.320"N	104°41'15.249"W	1.45	
5367.00	1.780	333.960	5107.05	-1444.19	1443.96	-340.35	40°04'34.362"N	104°41'15.274"W	2.39	
5462.00	0.590	26.710	5202.03	-1445.96	1445.72	-340.78	40°04'34.380"N	104°41'15.280"W	1.58	
5841.00	1.560	25.860	5580.96	-1452.34	1452.11	-337.65	40°04'34.443"N	104°41'15.239"W	0.26	
6125.00	0.900	44.240	5864.89	-1457.41	1457.19	-334.41	40°04'34.493"N	104°41'15.198"W	0.27	
6410.00	1.890	57.900	6149.80	-1461.51	1461.29	-328.86	40°04'34.534"N	104°41'15.126"W	0.36	
6599.00	0.880	315.460	6338.77	-1464.20	1463.98	-327.24	40°04'34.560"N	104°41'15.106"W	1.19	
6694.00	0.300	310.480	6433.76	-1464.88	1464.66	-327.94	40°04'34.567"N	104°41'15.115"W	0.61	
6789.00	11.860	180.350	6528.09	-1455.25	1455.02	-328.19	40°04'34.472"N	104°41'15.118"W	12.69	
6884.00	13.540	184.910	6620.77	-1434.40	1434.18	-329.20	40°04'34.266"N	104°41'15.131"W	2.06	
6979.00	18.310	182.950	6712.10	-1408.41	1408.18	-330.92	40°04'34.009"N	104°41'15.153"W	5.05	
7074.00	26.870	178.480	6799.73	-1371.97	1371.75	-331.12	40°04'33.649"N	104°41'15.156"W	9.18	
7168.00	34.220	181.000	6880.64	-1324.24	1324.02	-331.02	40°04'33.177"N	104°41'15.154"W	7.94	
7241.00†	39.984	183.526	6938.84	-1280.27	1280.05	-332.82	40°04'32.743"N	104°41'15.177"W	8.17	SSPG
7263.00	41.730	184.170	6955.48	-1265.91	1265.69	-333.79	40°04'32.601"N	104°41'15.190"W	8.17	
7287.00†	44.004	183.537	6973.07	-1249.63	1249.40	-334.89	40°04'32.440"N	104°41'15.204"W	9.65	NBRR
7288.00†	44.099	183.512	6973.78	-1248.93	1248.70	-334.93	40°04'32.433"N	104°41'15.204"W	9.65	ENTERED LANDBOX
7358.00	50.750	181.930	7021.12	-1197.47	1197.24	-337.34	40°04'31.924"N	104°41'15.235"W	9.65	
7453.00	64.870	183.030	7071.60	-1117.36	1117.13	-340.87	40°04'31.133"N	104°41'15.281"W	14.90	
7466.00†	65.922	182.534	7077.01	-1105.56	1105.33	-341.44	40°04'31.016"N	104°41'15.288"W	8.80	N470_B_CK
7547.00	72.510	179.610	7105.75	-1029.89	1029.66	-342.81	40°04'30.268"N	104°41'15.306"W	8.80	
7642.00	79.410	180.420	7128.78	-937.79	937.56	-342.85	40°04'29.358"N	104°41'15.306"W	7.31	
7734.00†	83.797	178.793	7142.21	-846.80	846.57	-342.21	40°04'28.459"N	104°41'15.298"W	5.08	N700_C_CK
7737.00	83.940	178.740	7142.53	-843.82	843.59	-342.15	40°04'28.429"N	104°41'15.297"W	5.08	
7784.00†	86.879	179.028	7146.29	-796.98	796.75	-341.24	40°04'27.967"N	104°41'15.286"W	6.28	LANDING POINT
7832.00	89.880	179.320	7147.65	-749.01	748.78	-340.55	40°04'27.493"N	104°41'15.277"W	6.28	
7926.00	90.680	178.250	7147.19	-655.04	654.81	-338.55	40°04'26.564"N	104°41'15.251"W	1.42	
8021.00	91.140	178.520	7145.68	-560.08	559.86	-335.88	40°04'25.626"N	104°41'15.217"W	0.56	
8115.00	89.420	179.190	7145.22	-466.11	465.88	-334.00	40°04'24.697"N	104°41'15.192"W	1.96	
8210.00	88.460	180.120	7146.98	-371.13	370.90	-333.43	40°04'23.758"N	104°41'15.185"W	1.41	
8305.00	89.750	179.650	7148.46	-276.14	275.91	-333.24	40°04'22.820"N	104°41'15.183"W	1.45	
8400.00	89.200	182.780	7149.33	-181.18	180.95	-335.25	40°04'21.881"N	104°41'15.208"W	3.35	
8495.00	90.580	182.330	7149.52	-86.28	86.05	-339.48	40°04'20.943"N	104°41'15.263"W	1.53	
8589.00	89.230	181.570	7149.67	7.66	-7.89	-342.68	40°04'20.015"N	104°41'15.304"W	1.65	

## REFERENCE WELLPATH IDENTIFICATION

Operator	KERR-MCGEE OIL & GAS ONSHORE LP (WA)	Slot	SLOT#17 ENGLISH FARMS 36N-8HZ (391'FNL & 2219'FEL, SEC.08)
Area	COLORADO	Well	ENGLISH FARMS 36N-8HZ
Field	WELD COUNTY (UTM/TRUE NORTH)	Wellbore	ENGLISH FARMS 36N-8HZ AWB <13009>
Facility	SEC.08-T1N-R65W		

## WELLPATH DATA (132 stations)

MD [ft]	Inclination [°]	Azimuth [°]	TVD [ft]	Vert Sect [ft]	North [ft]	East [ft]	Latitude	Longitude	DLS [°/100ft]	Comments
8684.00	90.120	180.780	7150.21	102.64	-102.87	-344.63	40°04'19.076"N	104°41'15.329"W	1.25	
8779.00	87.930	179.960	7151.83	197.61	-197.85	-345.24	40°04'18.138"N	104°41'15.337"W	2.46	
8874.00	88.030	179.250	7155.18	292.55	-292.79	-344.59	40°04'17.200"N	104°41'15.328"W	0.75	
8969.00	88.650	179.380	7157.93	387.51	-387.74	-343.45	40°04'16.261"N	104°41'15.314"W	0.67	
9064.00	89.260	179.090	7159.66	482.48	-482.71	-342.19	40°04'15.323"N	104°41'15.298"W	0.71	
9158.00	90.990	179.570	7159.46	576.47	-576.70	-341.09	40°04'14.394"N	104°41'15.283"W	1.91	
9253.00	91.510	179.430	7157.38	671.45	-671.68	-340.26	40°04'13.455"N	104°41'15.273"W	0.57	
9442.00	88.460	178.120	7157.43	860.38	-860.61	-336.22	40°04'11.588"N	104°41'15.221"W	1.76	
9632.00	90.150	178.040	7159.74	1050.26	-1050.48	-329.85	40°04'09.712"N	104°41'15.139"W	0.89	
9726.00	91.050	180.060	7158.75	1144.23	-1144.46	-328.29	40°04'08.783"N	104°41'15.119"W	2.35	
9821.00	90.650	181.290	7157.34	1239.21	-1239.44	-329.41	40°04'07.845"N	104°41'15.133"W	1.36	
9916.00	91.020	180.210	7155.96	1334.19	-1334.42	-330.66	40°04'06.906"N	104°41'15.149"W	1.20	
10106.00	89.450	179.720	7155.18	1524.18	-1524.41	-330.54	40°04'05.028"N	104°41'15.148"W	0.87	
10200.00	89.380	180.220	7156.14	1618.18	-1618.40	-330.49	40°04'04.100"N	104°41'15.147"W	0.54	
10295.00	89.200	179.550	7157.32	1713.17	-1713.40	-330.30	40°04'03.161"N	104°41'15.144"W	0.73	
10389.00	88.980	178.460	7158.81	1807.14	-1807.37	-328.67	40°04'02.232"N	104°41'15.123"W	1.18	
10484.00	89.940	179.460	7159.71	1902.12	-1902.35	-326.94	40°04'01.294"N	104°41'15.101"W	1.46	
10579.00	90.060	179.420	7159.71	1997.12	-1997.34	-326.02	40°04'00.355"N	104°41'15.089"W	0.13	
10674.00	89.510	181.130	7160.06	2092.11	-2092.34	-326.47	40°03'59.416"N	104°41'15.095"W	1.89	
10768.00	89.320	180.310	7161.02	2186.10	-2186.32	-327.65	40°03'58.487"N	104°41'15.110"W	0.90	
10863.00	88.740	179.780	7162.63	2281.09	-2281.31	-327.73	40°03'57.549"N	104°41'15.111"W	0.83	
10958.00	88.390	179.430	7165.01	2376.05	-2376.28	-327.07	40°03'56.610"N	104°41'15.103"W	0.52	
11053.00	91.080	178.310	7165.45	2471.02	-2471.25	-325.20	40°03'55.672"N	104°41'15.079"W	3.07	
11147.00	90.590	179.060	7164.08	2564.99	-2565.21	-323.04	40°03'54.743"N	104°41'15.051"W	0.95	
11242.00	89.540	179.730	7163.97	2659.98	-2660.20	-322.04	40°03'53.804"N	104°41'15.038"W	1.31	
11337.00	90.250	179.180	7164.14	2754.98	-2755.20	-321.14	40°03'52.866"N	104°41'15.026"W	0.95	
11432.00	88.240	181.250	7165.40	2849.96	-2850.18	-321.49	40°03'51.927"N	104°41'15.031"W	3.04	
11526.00	88.620	180.770	7167.97	2943.91	-2944.13	-323.15	40°03'50.998"N	104°41'15.052"W	0.65	
11621.00	88.490	180.320	7170.37	3038.87	-3039.09	-324.05	40°03'50.060"N	104°41'15.064"W	0.49	
11716.00	89.320	179.970	7172.18	3133.85	-3134.08	-324.29	40°03'49.121"N	104°41'15.067"W	0.95	
11811.00	89.480	179.270	7173.18	3228.85	-3229.07	-323.66	40°03'48.183"N	104°41'15.059"W	0.76	
11906.00	89.540	181.260	7173.99	3323.84	-3324.06	-324.10	40°03'47.244"N	104°41'15.064"W	2.10	
12001.00	91.010	181.660	7173.53	3418.80	-3419.02	-326.52	40°03'46.305"N	104°41'15.096"W	1.60	
12095.00	89.540	181.250	7173.08	3512.76	-3512.99	-328.91	40°03'45.377"N	104°41'15.126"W	1.62	
12190.00	89.510	181.060	7173.87	3607.74	-3607.97	-330.82	40°03'44.438"N	104°41'15.151"W	0.20	
12285.00	89.720	180.520	7174.51	3702.73	-3702.96	-332.13	40°03'43.500"N	104°41'15.168"W	0.61	
12380.00	91.450	181.060	7173.54	3797.71	-3797.94	-333.44	40°03'42.561"N	104°41'15.184"W	1.91	
12475.00	91.230	180.270	7171.32	3892.68	-3892.90	-334.55	40°03'41.622"N	104°41'15.199"W	0.86	
12664.00	92.090	180.160	7165.84	4081.59	-4081.82	-335.25	40°03'39.756"N	104°41'15.208"W	0.46	
12759.00	90.490	180.430	7163.70	4176.56	-4176.79	-335.74	40°03'38.817"N	104°41'15.214"W	1.71	
12962.00	92.680	179.800	7158.09	4379.47	-4379.70	-336.15	40°03'36.812"N	104°41'15.219"W	1.12	LAST BHI MWD+IFR SURVEYS
13009.00	92.680	179.800	7155.89	4426.42	-4426.65	-335.99	40°03'36.348"N	104°41'15.217"W	0.00	PROJECTION TO BIT

## REFERENCE WELLPATH IDENTIFICATION

Operator	KERR-MCGEE OIL & GAS ONSHORE LP (WA)	Slot	SLOT#17 ENGLISH FARMS 36N-8HZ (391'FNL & 2219'FEL, SEC.08)
Area	COLORADO	Well	ENGLISH FARMS 36N-8HZ
Field	WELD COUNTY (UTM/TRUE NORTH)	Wellbore	ENGLISH FARMS 36N-8HZ AWB <13009>
Facility	SEC.08-T1N-R65W		

## HOLE & CASING SECTIONS - Ref Wellbore: ENGLISH FARMS 36N-8HZ AWB <13009> Ref Wellpath: ENGLISH FARMS 36N-8HZ AWP

String/Diameter	Start MD [ft]	End MD [ft]	Interval [ft]	Start TVD [ft]	End TVD [ft]	Start N/S [ft]	Start E/W [ft]	End N/S [ft]	End E/W [ft]
13.5in Open Hole	16.00	1891.00	1875.00	16.00	1825.64	0.00	0.00	378.53	-103.27
9.625in Casing Surface	16.00	1881.00	1865.00	16.00	1816.62	0.00	0.00	374.31	-102.32
7.875in Open Hole	1891.00	13009.00	11118.00	1825.64	7155.89	378.53	-103.27	-4426.65	-335.99

## TARGETS

Name	TVD [ft]	North [ft]	East [ft]	Grid East [US ft]	Grid North [US ft]	Latitude	Longitude	Shape
SEC.05-T1N-R65W SECTION LINES	7114.00	746.40	-133.48	1728023.23	14553942.30	40°04'27.469"N	104°41'12.613"W	polygon
SEC.08-T1N-R65W SECTION LINES	7114.00	21.25	-2188.57	1725971.51	14553210.20	40°04'20.302"N	104°41'39.048"W	polygon
ENGLISH FARMS 36N-8HZ BHL ON PLAT REV-1 (463'FSL & 2543'FEL, SEC.08)	7191.00	-4452.75	-339.25	1727835.85	14548744.51	40°03'36.090"N	104°41'15.259"W	point
ENGLISH FARMS 36N-8HZ LANBOX	7191.00	0.00	0.00	1728159.28	14553196.68	40°04'20.093"N	104°41'10.896"W	polygon

## WELLPATH COMPOSITION - Ref Wellbore: ENGLISH FARMS 36N-8HZ AWB <13009> Ref Wellpath: ENGLISH FARMS 36N-8HZ AWP

Start MD [ft]	End MD [ft]	Positional Uncertainty Model	Log Name/Comment	Wellbore
16.00	1838.00	Custom APC_ISCWSA REV 2 MWD+IFR1+SC (approximation)	BHI MWD+IFR SURVEYS 13.5" <168-1838>	ENGLISH FARMS 36N-8HZ AWB <13009>
1838.00	12962.00	Custom APC_ISCWSA REV 2 MWD+IFR1+SC (approximation)	BHI MWD+IFR SURVEYS 7.875" <1953-12962>	ENGLISH FARMS 36N-8HZ AWB <13009>
12962.00	13009.00	Blind Drilling (std)	Projection to bit	ENGLISH FARMS 36N-8HZ AWB <13009>



# Actual Wellpath Report

ENGLISH FARMS 36N-8HZ AWP  
Page 6 of 6



## REFERENCE WELLPATH IDENTIFICATION

Operator	KERR-MCGEE OIL & GAS ONSHORE LP (WA)	Slot	SLOT#17 ENGLISH FARMS 36N-8HZ (391'FNL & 2219'FEL, SEC.08)
Area	COLORADO	Well	ENGLISH FARMS 36N-8HZ
Field	WELD COUNTY (UTM/TRUE NORTH)	Wellbore	ENGLISH FARMS 36N-8HZ AWB <13009>
Facility	SEC.08-T1N-R65W		

## WELLPATH COMMENTS

MD [ft]	Inclination [°]	Azimuth [°]	TVD [ft]	Comment
168.00	0.310	92.470	168.00	BEGIN BHI MWD+IFR SURVEYS
7241.00	39.984	183.526	6938.84	SSPG
7287.00	44.004	183.537	6973.07	NBRR
7288.00	44.099	183.512	6973.78	ENTERED LANDBOX
7466.00	65.922	182.534	7077.01	N470_B_CK
7734.00	83.797	178.793	7142.21	N700_C_CK
7784.00	86.879	179.028	7146.29	LANDING POINT
12962.00	92.680	179.800	7158.09	LAST BHI MWD+IFR SURVEYS
13009.00	92.680	179.800	7155.89	PROJECTION TO BIT