

1801 Broadway  
Suite 500  
Denver, Colorado 80202



Allison Linz  
Regulatory Technician  
Tel: 303.398.0355  
E-mail: alinz@gwogco.com

September 3, 2015

Colorado Oil and Gas Conservation Commission  
1120 Lincoln Street, Suite 801  
Denver, Colorado 80203

RE: **Proposed Wellbore Spacing Unit**  
Schneider HD 11-209HC

Codell New Drill  
Township 4 North, Range 66 West, 6<sup>th</sup> P.M.  
SWSW Section 7  
Weld County, Colorado

Dear Director:

Great Western Operating Company, LLC is planning to drill the above captioned well in accordance with the provisions of COGCC Rule 318A.e.

Great Western proposed wellbore spacing unit consists of:

- **SE/4 Section 11, S/2 Section 12**
- **480 Acres**

The 30 day notification time period has passed and we have not received any objections to such well locations or proposed spacing unit, therefore Great Western hereby requests the Director to approve the above mentioned well. Great Western Operating Company, LLC respectfully requests that the COGCC review the enclosed map illustrating the proposed wellbore spacing unit.

Respectfully,

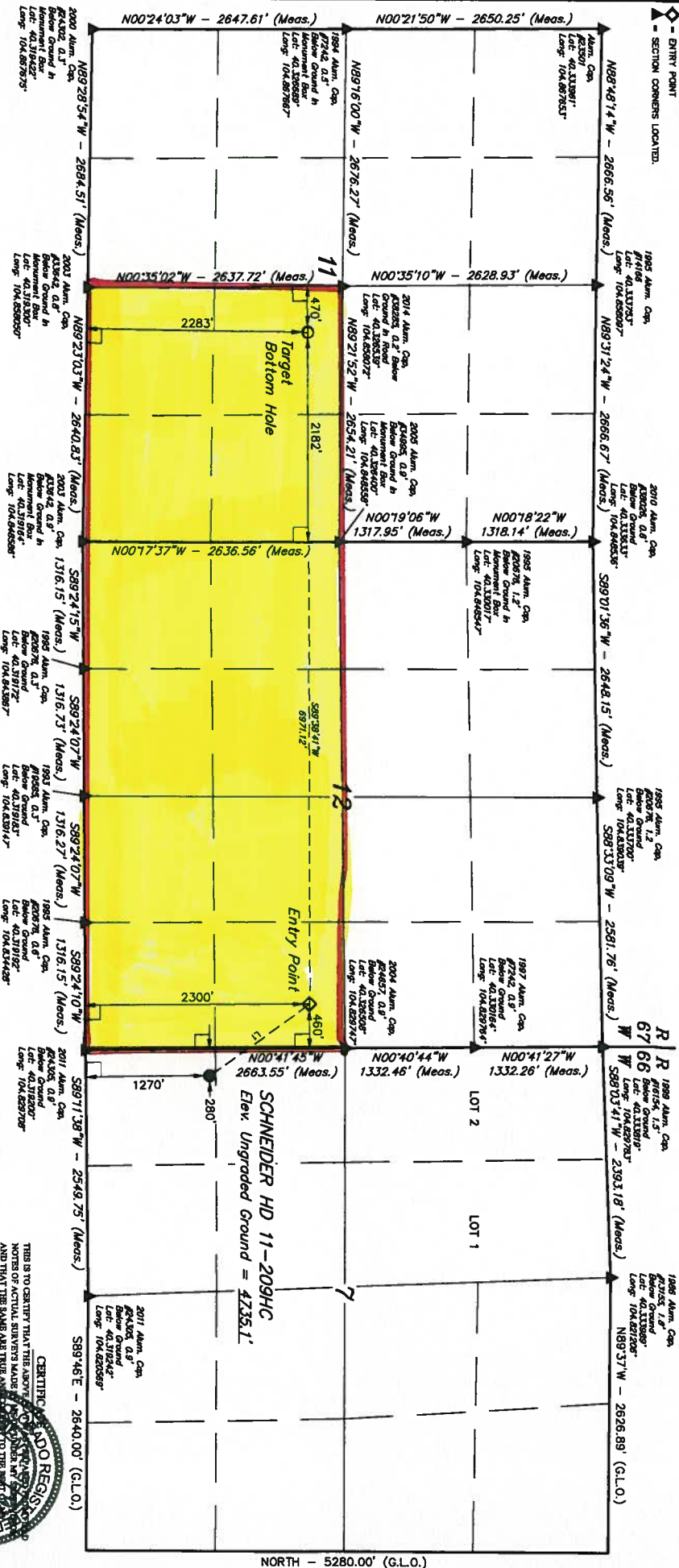
*Allison Linz*

Allison Linz  
Regulatory Technician  
Great Western Operating Company, LLC

# LEGEND:

- 80' SIMBO.
- PROPOSED WELLHEAD.
- TARGET BOTTOM HOLE.
- ◆ ENTRY POINT
- ◆ SECTION CORNERS LOCATED.

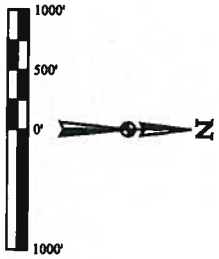
T4N, R66W, 6th P.M.



**BASIS OF BEARINGS**  
BASIS OF ELEVATION  
USGS COOPERATIVE BASE NETWORK CONTROL STATION,  
DESIGNATION "VERMILYEA", NOS DATA SHEET LISTS THE  
NAVD 88 ELEVATION AS BEING 9026 FEET.



UEL'S, LLC  
Corporate Office - 85 South 200 East  
Vernal, UT 84078 - (435) 785-1017



| LINE TABLE |             |          |
|------------|-------------|----------|
| LINE       | DIRECTION   | LENGTH   |
| L1         | N56°23'30"W | 1268.30' |

| R66W (T4N) BOTTOM HOLE |                             | R66W (T4N) ENTRY POINT |                             | R66W (T4N) WELLS |                             |
|------------------------|-----------------------------|------------------------|-----------------------------|------------------|-----------------------------|
| LATITUDE               | 40°19'11.87" (40.323548)    | LATITUDE               | 40°19'11.87" (40.323548)    | LATITUDE         | 40°19'11.87" (40.323548)    |
| LONGITUDE              | -106°12'12.97" (106.203596) | LONGITUDE              | -106°12'12.97" (106.203596) | LONGITUDE        | -106°12'12.97" (106.203596) |
| R66W (T4N) ENTRY POINT |                             | R66W (T4N) WELLS       |                             | R66W (T4N) WELLS |                             |
| LATITUDE               | 40°19'11.87" (40.323548)    | LATITUDE               | 40°19'11.87" (40.323548)    | LATITUDE         | 40°19'11.87" (40.323548)    |
| LONGITUDE              | -106°12'12.97" (106.203596) | LONGITUDE              | -106°12'12.97" (106.203596) | LONGITUDE        | -106°12'12.97" (106.203596) |

POOF - 1.2

**GREAT WESTERN OIL & GAS COMPANY**  
SW 1/4 SW 1/4 SECTION 11, T4N, R66W, 6th P.M.  
WELD COUNTY, COLORADO  
SURVEYED BY: DALLAS NILES, J.S.  
DATE: 08-18-14  
DRAWN BY: J.W.  
DATE: 08-18-14  
REVISOR: 10-16-14  
WELL LOCATION PLAT



THIS IS TO CERTIFY THAT THE ABOVE  
NOTES OF ACTUAL SURVEY MADE  
AND THAT THE SAME ARE TRUE AND  
KNOWLEDGE AND BELIEF.

NORTH - 5280.00' (G.L.O.)