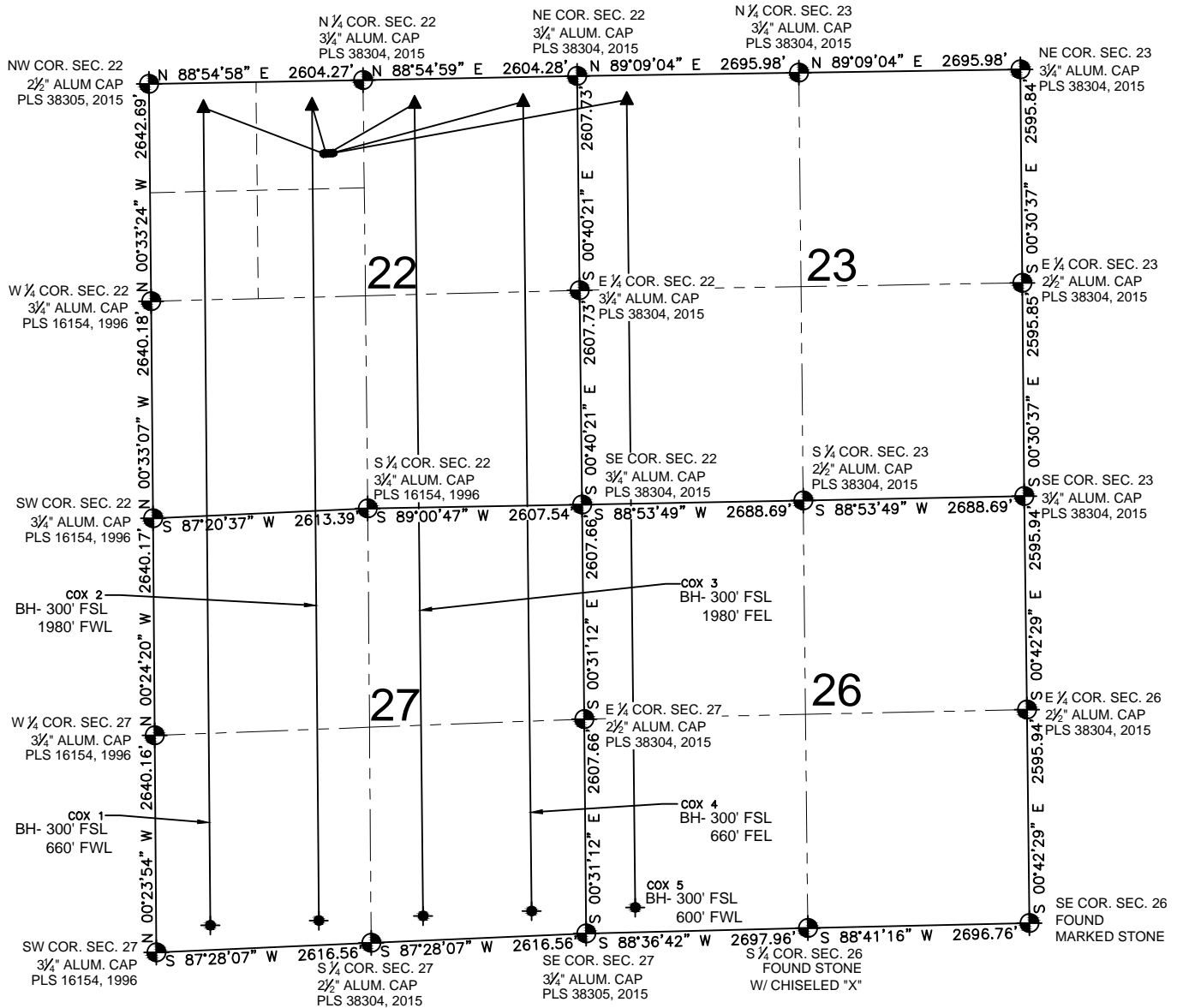


COX 22-B PAD MULTI-WELL PLAN



LEGEND

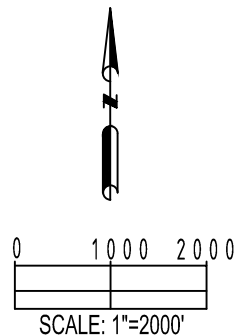
- = EXISTING MONUMENT
- = PROPOSED WELL
- ▲ = LANDING POINT
- = BOTTOM HOLE
- LP = LANDING POINT
- BH = BOTTOM HOLE

NOTES:

- COX 1 TO BE AT 887' FNL, 2114' FWL.
- BOTTOM HOLE AT 300' FSL & 660' FWL, SEC 27.
- COX 2 TO BE AT 886' FNL, 2144' FWL.
- BOTTOM HOLE AT 300' FSL & 1980' FWL, SEC 27.
- COX 3 TO BE AT 884' FNL, 2173' FWL.
- BOTTOM HOLE AT 300' FSL & 1980' FEL, SEC 27.
- COX 4 TO BE AT 883' FNL, 2203' FWL.
- BOTTOM HOLE AT 300' FSL & 660' FEL, SEC 27.
- COX 5 TO BE AT 882' FNL, 2233' FWL.
- BOTTOM HOLE AT 300' FSL & 600' FWL, SEC 26.

NOTES:

1. THIS FIELD SURVEY CONFORMS TO THE MINIMUM STANDARDS SET BY THE C.O.G.C.C., RULE NO. 215
2. BEARINGS AND DISTANCE SHOWN HEREON ARE GRID AND BASED ON THE COLORADO STATE PLANE COORDINATE SYSTEM, NAD 83/2011 BETWEEN MONUMENTS AS LABELED HEREON AND ELEVATIONS SHOWN ARE NAVD 88, AS DERIVED BY GPS OBSERVATIONS.
3. GRID DISTANCES ARE SHOWN, AS MEASURED IN THE FIELD, WITH TIES TO WELLS MEASURED PERPENDICULAR TO SECTION LINES.



PREPARED BY:



FIELD DATE:

05-05-15

DRAWING DATE:

05-06-15

BY:

SMF

CHECKED BY:

TJN

SITE NAME:

COX 22-B PAD

SURFACE LOCATION:

NE 1/4 NW 1/4, SEC. 22, T12N, R64W, 6TH P.M.
WELD COUNTY, COLORADO

PREPARED FOR:

