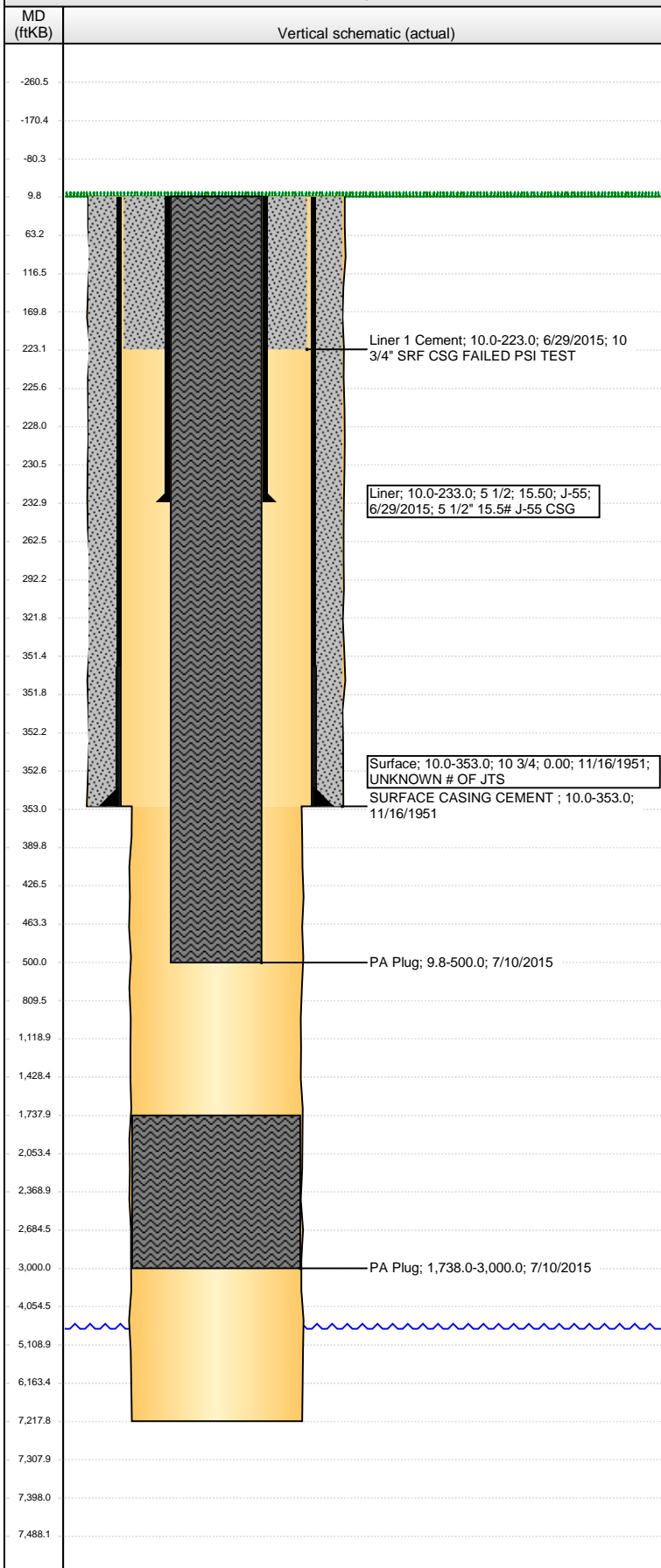


**Well Name: STATE-SLW RANCH 01**

VERTICAL - ORIGINAL HOLE, 9/2/2015 3:34:09 PM



## Well Header

API	Business Unit	District	Well Config
05-123-05187	DJ BASIN	15	VERTICAL
Original KB Elevation (ft)	KB - GL / MSL (ftKB)	Spud Date	P & A Date
4,670.00	10.00	11/16/1951	12/12/1951

Comment  
VERY LIMITED & SPARSE DETAIL ON DA WELL. WBI RE-ENTRY.

USED HEAVY MUD FROM TD TO BOTTOM OF SURF CSG. SET CMT PLUG AT TOP OF SURFACE - UNKNOWN # OF SXS USED - CALCULATED PLUG USING 5 SXS CMT.

Directions To Well  
CR 388 AND 61 NORTH .5 NORTH EAST .2 NORTH 1 EAST ALONG FENCE LINE .75 TO LOCATION

## Congressional Location

Quarter 1	Quarter 2	Quarter 3	Quarter 4	Section	Township	Twnshp N...	Range	Rng E/W Dir
				18	5	N	63	W

## Bottom Hole Location

North-South Distance (ft)	From N or S Line	East-West Distance (ft)	From E or W Line

## Plug Back Total Depths

Date	Depth (ftKB)	Method	Com

## Wellbore Sections

Section Des	Size (in)	Act Top, MD (ftKB)	Act Btm, MD (ftKB)
SURFACE	13 1/2	10.0	353.0
PRODUCTION	9	353.0	7,218.0

## Zone Statuses

Zone Name	Status Date	Status	Fluid Type	Job	Prod Method

## Casing Strings

### Liner, 233.0ftKB

Casing Description	Run Date	OD (in)	Wt/Len (l...	Grade	Top, MD (ft...	MD (ftKB)
Liner	6/29/2015	5 1/2	15.50	J-55	10.0	233.0

### Surface, 353.0ftKB

Casing Description	Run Date	OD (in)	Wt/Len (l...	Grade	Top, MD (ft...	MD (ftKB)
Surface	11/16/1951	10 3/4			10.0	353.0

## Cement

Description	Top Depth (ftKB)	Bottom Depth (ftKB)
SURFACE CASING CEMENT	10.0	353.0
Cement Plug		
Cement Plug		
Liner 1 Cement	10.0	223.0
PA Plug	1,738.0	3,000.0
PA Plug	9.8	500.0

## Tubing Strings

Tubing Description	Run Date	String...	ID (in)	Wt (lb/ft)	Grade	Len (ft)	Set De...

## Perforation Data

Zone	Bnch/St g	Entered Shot Total	Top (ftKB)	Btm (ftKB)	Date

## Other In Hole

Run Date	Des	OD (in)	Top (ftKB)	Btm (ftKB)

## Logs

Date	Type	Top, MD (ftKB)	Btm, MD (ftKB)
12/4/1951	ELECTRICAL LOG	326.0	6,438.0