

T10N, R58W, 6th P.M.

WHITING OIL & GAS CORP.

Target Bottom Hole

2012 UELS Alum. Cap,
#28285, 0.3' High
Lat: 40.860647°
Long: 103.823292°

2012 UELS Alum. Cap,
#28285, 0.3' High
Lat: 40.860664°
Long: 103.813706°

2006 Private Alum.
Cap, #24949,
0.6' Below Ground
Lat: 40.860678°
Long: 103.804117°

R 58
R 57
W W

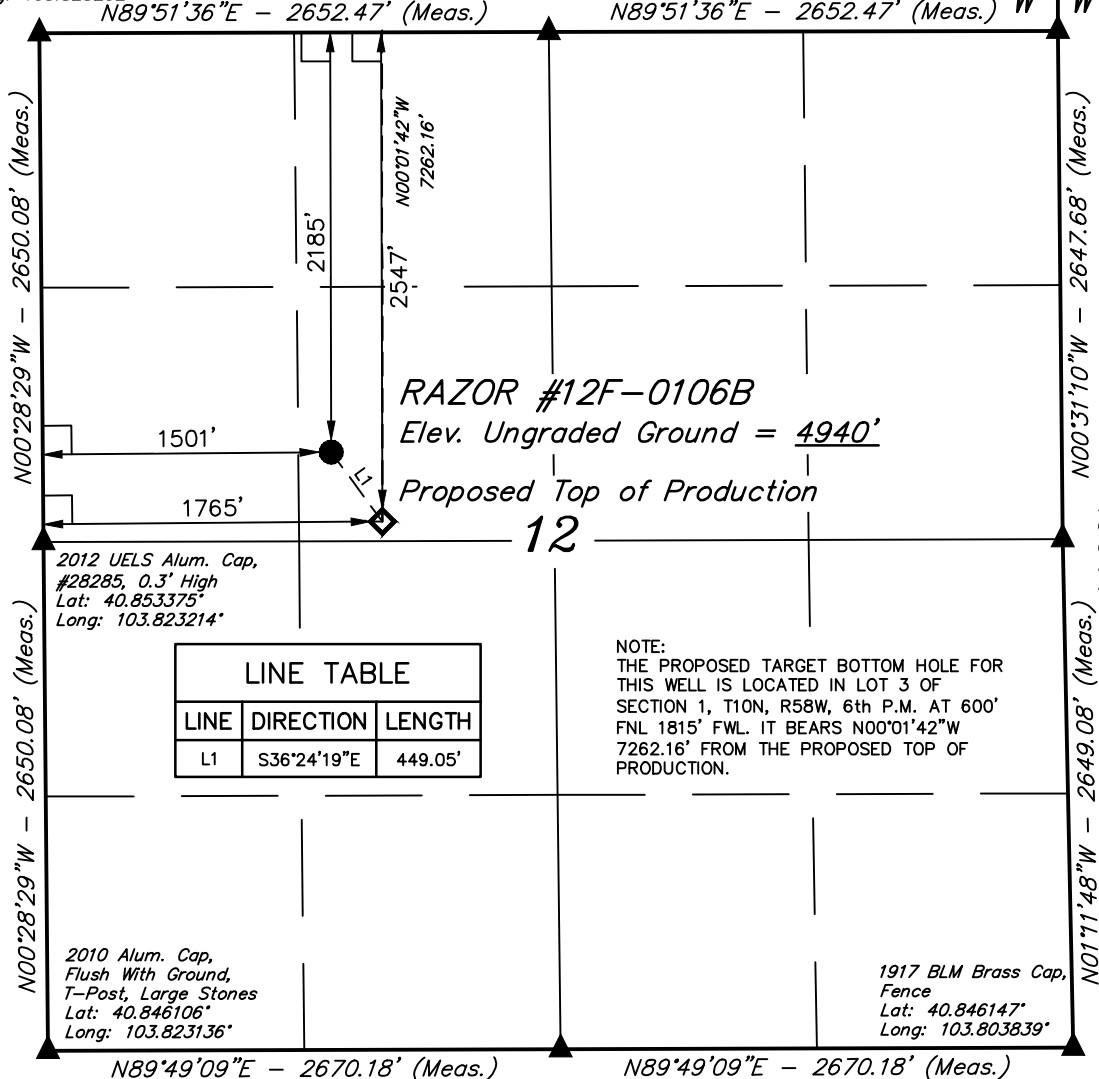
Well location, RAZOR #12F-0106B (SURFACE LOCATION), located as shown in the SE 1/4 NW 1/4 of Section 12, T10N, R58W, 6th P.M., Weld County, Colorado.

BASIS OF ELEVATION

SPOT ELEVATION LOCATED AT THE NORTHEAST CORNER OF SECTION 15, T9N, R58W, 6th P.M. TAKEN FROM THE GATEHOOK SPRING, QUADRANGLE, COLORADO, WELD COUNTY, 7.5 MINUTE QUAD (TOPOGRAPHIC MAP) PUBLISHED BY THE UNITED STATES DEPARTMENT OF THE INTERIOR, GEOLOGICAL SURVEY. SAID ELEVATION IS MARKED AS BEING 4679 FEET.

BASIS OF BEARINGS

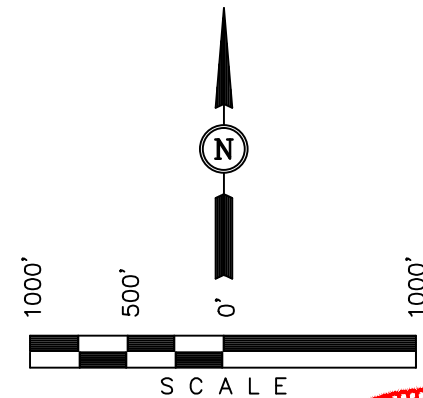
BASIS OF BEARINGS IS A G.P.S. OBSERVATION.



LINE TABLE		
LINE	DIRECTION	LENGTH
L1	S36°24'19\"E	449.05'

NOTE:
THE PROPOSED TARGET BOTTOM HOLE FOR THIS WELL IS LOCATED IN LOT 3 OF SECTION 1, T10N, R58W, 6th P.M. AT 600' FNL 1815' FWL. IT BEARS N00°01'42\"W 7262.16' FROM THE PROPOSED TOP OF PRODUCTION.

2006 Private Alum.
Cap, #24949,
0.6' Below Ground
Lat: 40.853414°
Long: 103.804036°



CERTIFICATION

THIS IS TO CERTIFY THAT THE ABOVE PLAT WAS PREPARED FROM FIELD NOTES OF ACTUAL SURVEYS MADE BY ME OR UNDER MY SUPERVISION AND THAT THE SAME ARE TRUE AND CORRECT TO THE BEST OF MY KNOWLEDGE AND BELIEF.

REGISTERED LAND SURVEYOR
REGISTRATION NO. 28285
STATE OF COLORADO

REV: 08-31-15 J.P.
REV: 07-02-13 B.D.H.

UINTAH ENGINEERING & LAND SURVEYING
85 SOUTH 200 EAST - VERNAL, UTAH 84078
(435) 789-1017

LEGEND:

- └─┘ = 90° SYMBOL
- = PROPOSED WELL HEAD.
- ▲ = SECTION CORNERS LOCATED.
- ◆ = PROPOSED TOP OF PRODUCTION

2012 UELS Alum. Cap,
#28285, 0.3' High
Lat: 40.846125°
Long: 103.813489°

PDOP = 2.6

NAD 83 (PROPOSED TOP OF PRODUCTION)	NAD 83 (SURFACE LOCATION)
LATITUDE = 40°51'13.21" (40.853669)	LATITUDE = 40°51'16.78" (40.854661)
LONGITUDE = 103°49'00.62" (103.816839)	LONGITUDE = 103°49'04.09" (103.817803)
NAD 27 (PROPOSED TOP OF PRODUCTION)	NAD 27 (SURFACE LOCATION)
LATITUDE = 40°51'13.26" (40.853683)	LATITUDE = 40°51'16.83" (40.854675)
LONGITUDE = 103°48'58.81" (103.816336)	LONGITUDE = 103°49'02.28" (103.817300)

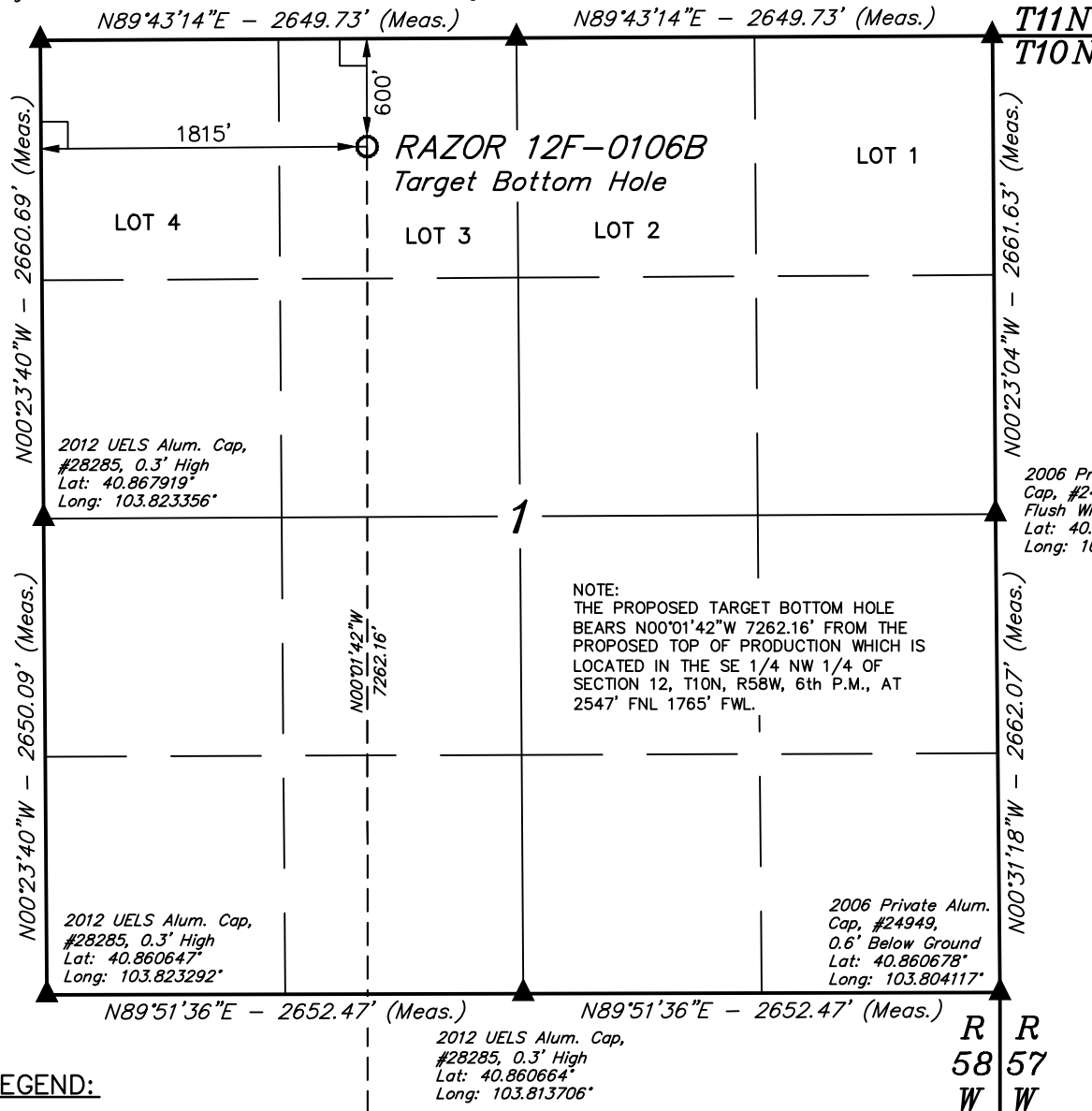
SCALE 1" = 1000'	DATE SURVEYED: 05-14-13	DATE DRAWN: 05-20-13
PARTY J.H. K.H. A.D.	REFERENCES G.L.O. PLAT	
WEATHER WARM	FILE WHITING OIL & GAS CORP.	

T10N, R58W, 6th P.M.

2012 UELS Alum. Cap,
#28285, 0.3' High
Lat: 40.875219°
Long: 103.823419°

2012 UELS Alum. Cap,
#28285, 0.3' High
Lat: 40.875256°
Long: 103.813842°

1917 BLM Brass Cap,
0.5' High, N-W Fence
Lat: 40.875286°
Long: 103.804261°



LEGEND:

- └─┘ = 90° SYMBOL
- = PROPOSED WELL HEAD.
- ▲ = SECTION CORNERS LOCATED.
- ◆ = PROPOSED TOP OF PRODUCTION

Proposed Top
of Production

NAD 83 (TARGET BOTTOM HOLE)	
LATITUDE	= 40°52'24.95" (40.873597)
LONGITUDE	= 103°49'00.64" (103.816844)
NAD 27 (TARGET BOTTOM HOLE)	
LATITUDE	= 40°52'25.00" (40.873611)
LONGITUDE	= 103°48'58.83" (103.816342)

WHITING OIL & GAS CORP.

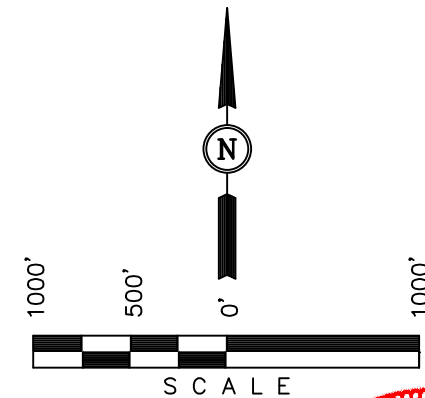
Well location, RAZOR #12F-0106B (TARGET BOTTOM HOLE), located as shown in LOT 3 of Section 1, T10N, R58W, 6th P.M., Weld County, Colorado.

BASIS OF ELEVATION

SPOT ELEVATION LOCATED AT THE NORTHEAST CORNER OF SECTION 15, T9N, R58W, 6th P.M. TAKEN FROM THE GATEHOOK SPRING, QUADRANGLE, COLORADO, WELD COUNTY, 7.5 MINUTE QUAD (TOPOGRAPHIC MAP) PUBLISHED BY THE UNITED STATES DEPARTMENT OF THE INTERIOR, GEOLOGICAL SURVEY. SAID ELEVATION IS MARKED AS BEING 4679 FEET.

BASIS OF BEARINGS

BASIS OF BEARINGS IS A G.P.S. OBSERVATION.



CERTIFICATION

THIS IS TO CERTIFY THAT THE ABOVE PLAT WAS PREPARED FROM FIELD NOTES OF ACTUAL SURVEYS MADE BY ME OR UNDER MY SUPERVISION AND THAT THE SAME ARE TRUE AND CORRECT TO THE BEST OF MY KNOWLEDGE AND BELIEF.

REGISTERED LAND SURVEYOR
REGISTRATION NO. 28285
STATE OF COLORADO

REV: 08-31-15 J.P.
REV: 07-02-13 B.D.H.

UINTAH ENGINEERING & LAND SURVEYING
85 SOUTH 200 EAST - VERNAL, UTAH 84078
(435) 789-1017

SCALE 1" = 1000'	DATE SURVEYED: 05-14-13	DATE DRAWN: 05-20-13
PARTY J.H. K.H. A.D.	REFERENCES G.L.O. PLAT	
WEATHER WARM	FILE WHITING OIL & GAS CORP.	