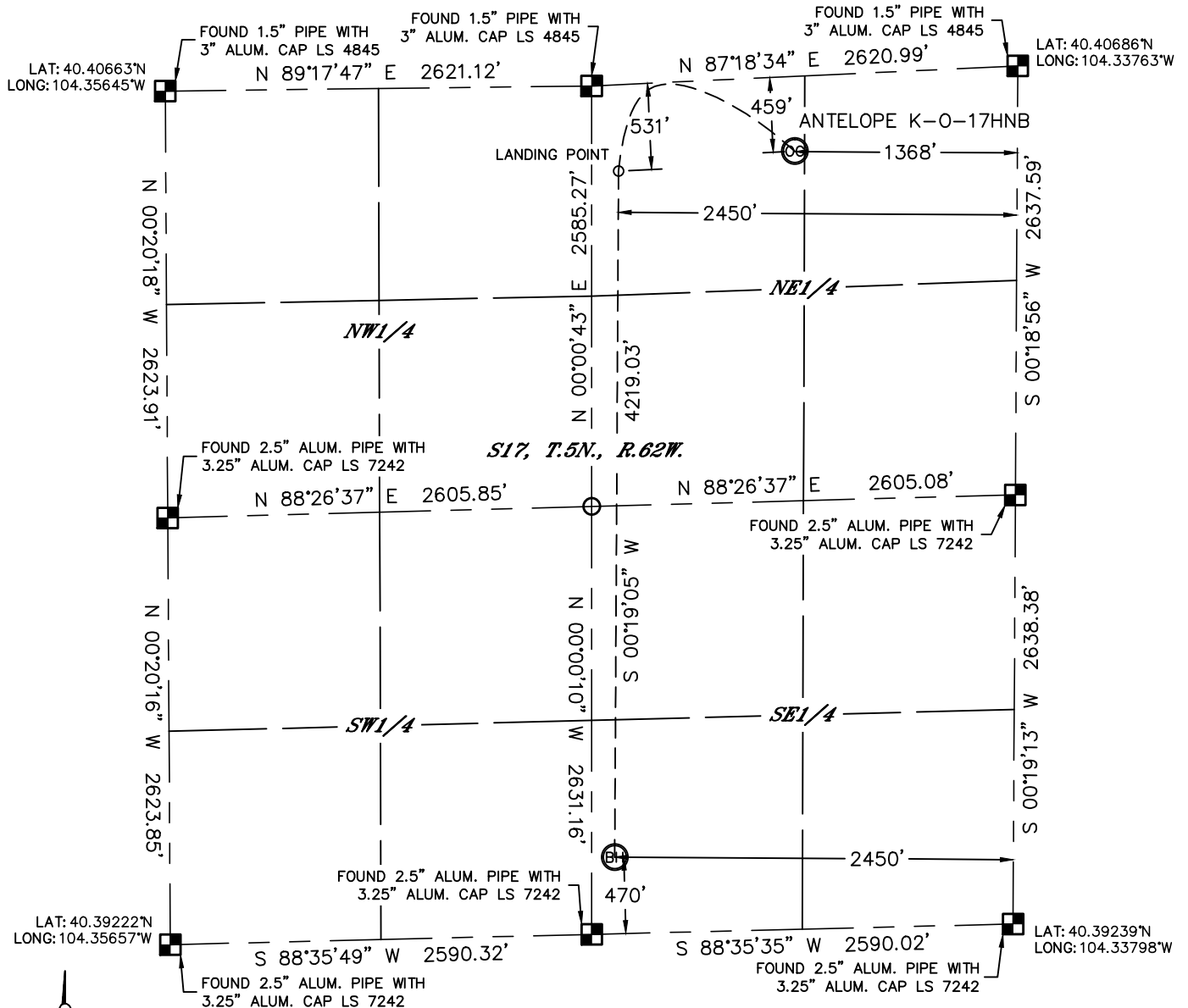


WELL LOCATION CERTIFICATE

THIS MAP DOES NOT REPRESENT A BOUNDARY SURVEY

SECTION: 17
TOWNSHIP: 5N
RANGE: 62W



In accordance with a request from Keith Caplan with BONANZA CREEK ENERGY, INC. Lat40^o, Inc. has determined the surface location of the ANTELOPE K-O-17HNB to be 459' from the NORTH line and 1368' from the EAST line and the bottom hole to be 470' from the SOUTH line and 2450' from the EAST line as measured at right angles from the section lines of Section 17, Township 5 North, Range 62 West of the Sixth Principal Meridian, County of Weld, State of Colorado.

I hereby state that this Well Location Certificate was prepared by me, or under my direct supervision, that the fieldwork was completed on 8/14/2013, for and on behalf of BONANZA CREEK ENERGY, INC.. That this is not a Land Survey Plat or an Improvement Survey Plat, and that it is not to be relied upon for establishment of fence, building, or other future improvement lines.

SURFACE LOCATION

LAT: 40.40548°N
LONG: 104.34258°W
PDOP: 2.2
ELEV: 4695'
1/4,1/4: NW1/4NE1
NEAREST PROPERTY

LANDING POINT

LAT: 40.40518°N
LONG: 104.34647°W
1/4,1/4: NW1/4NE1/4

BOTTOM HOLE

LAT: 40.39360°N
LONG: 104.34675°W
1/4.1/4: SW1/4SE1/4

NEAREST PROPERTY LINE: 459' NORTH



NOTE:

- 1) Bearings shown are Grid Bearings of the Colorado State Plane Coordinate System, North Zone, North American Datum 1983/2007. The lineal dimensions as contained herein are based upon the "U.S. Survey Foot."
- 2) Ground elevations are based on an observed GPS elevation (NAVD 1988 DATUM).
- 3) IMPROVEMENTS: See LOCATION DRAWING for all visible improvements within 400' of disturbed area.
- 4) SURFACE USE: RANGELAND
- 5) INSTRUMENT OPERATOR: ADAM KELLY

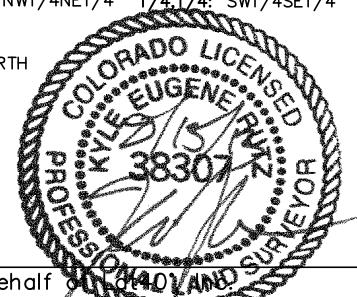
NOTE

NOTE
According to Colorado law, you must commence any legal action based upon any defect in this W.L.C. within three years after you discover such defect. In no event, may any action based upon any defect in this survey be commenced more than ten years after the date of the certificate shown hereon. (13-80-105 C.R.S.)

LEGEND

- LEGEND
-  = ALIQUOT MONUMENT AS DESCRIBED
-  = CALCULATED POSITION

Kyle E. Rutz—On behalf of 
Colorado Licensed Professional Land Surveyor No. 38307
DATE: 08/15/2013 Rev. 8/15/2013
PROJECT#: 2012052



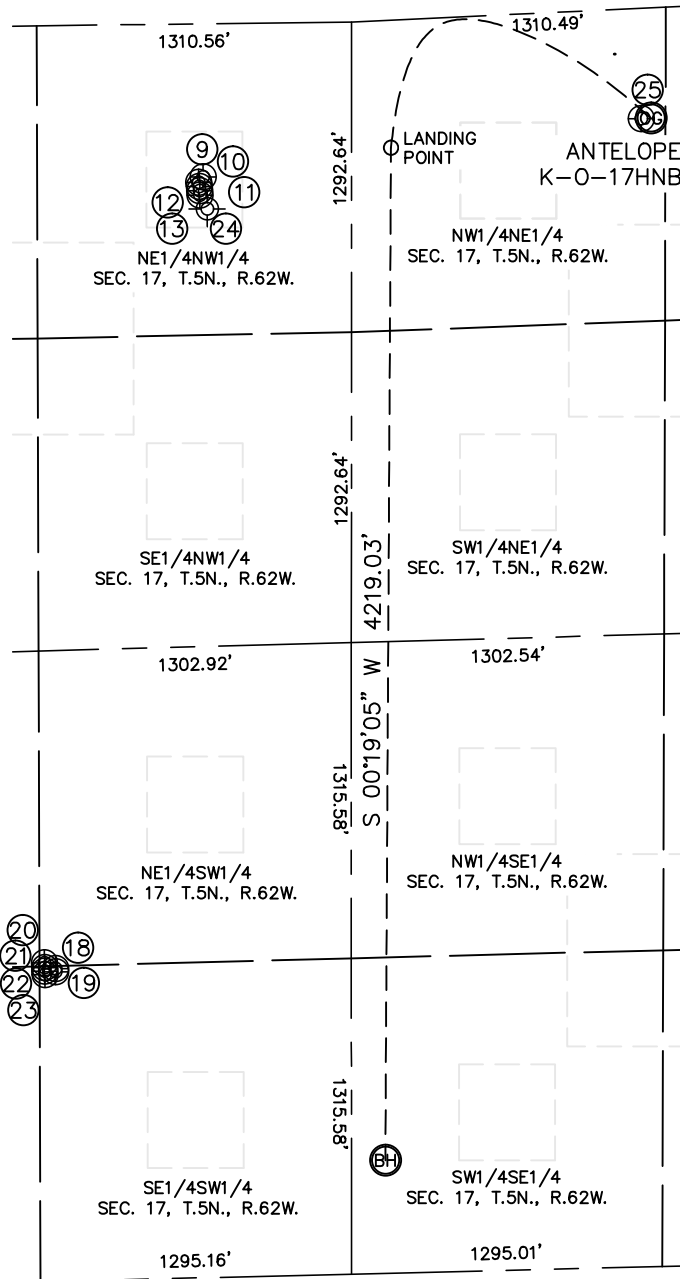


Lat40°, Inc. 1635 Foxtrail Drive, Suite 325 Loveland, CO 970-776-3321

SITE SKETCH

ANTELOPE K-O-17HNB

SECTION: 17
TOWNSHIP: 5N
RANGE: 63W



⑨
ANTELOPE L-17
NE1/4NW1/4
639' FNL
1999' FWL
LAT-40.40487°N
LONG-104.34928°W
PDOP:1.2
ELEV: 4691'

⑩
ANTELOPE 11-17
NE1/4NW1/4
660' FNL
1981' FWL
LAT-40.40481°N
LONG-104.34935°W
PDOP:1.5
ELEV: 4690'

⑪
ANTELOPE G-17
NE1/4NW1/4
678' FNL
1983' FWL
LAT-40.40476°N
LONG-104.34934°W
PDOP:1.3
ELEV: 4690'

⑫
ANTELOPE 21-17
NE1/4NW1/4
696' FNL
1984' FWL
LAT-40.40471°N
LONG-104.34934°W
PDOP:1.5
ELEV: 4691'

⑬
ANTELOPE 22-17
NE1/4NW1/4
713' FNL
1985' FWL
LAT-40.40466°N
LONG-104.34934°W
PDOP:1.3
ELEV: 4691'

⑭
ANTELOPE M-17
SE1/4SW1/4
1303' FSL
1365' FWL
LAT-40.39584°N
LONG-104.35164°W
PDOP:1.1
ELEV: 4642'

⑮
ANTELOPE N-17
SE1/4SW1/4
1289' FSL
1366' FWL
LAT-40.39581°N
LONG-104.35164°W
PDOP:1.0
ELEV: 4642'

⑯
ANTELOPE I-17
NE1/4SW1/4
1327' FSL
1320' FWL
LAT-40.39591°N
LONG-104.35180°W
PDOP:1.0
ELEV: 4642'

⑰
ANTELOPE 24-17
SE1/4SW1/4
1278' FSL
1321' FWL
LAT-40.39577°N
LONG-104.35180°W
PDOP:1.5
ELEV: 4642'

⑱
BROWN & MANNING 1 (COGCC)
(PLUGGED & ABANDONED)
NE1/4NW1/4 (COGCC)
771' FNL
2016' FWL
LAT-40.40451°N (COGCC)
LONG-104.34923°W (COGCC)
PDOP:N/A
ELEV: 4691' (COGCC)

⑲
ANTELOPE 23-17
SE1/4SW1/4
1308' FSL
1321' FWL
LAT-40.39586°N
LONG-104.35180°W
PDOP:1.5
ELEV: 4642'

⑳
ANTELOPE 14-17
SE1/4SW1/4
1293' FSL
1320' FWL
LAT-40.39581°N
LONG-104.35180°W
PDOP:1.5
ELEV: 4642'

㉑
ANTELOPE P-T-17HZ
NW1/4NE1/4
460' FNL
1409' FEL
LAT-40.40547°N
LONG-104.34272°W
PDOP:2.1
ELEV: 4696'

DATE: rev.8/15/2013
PROJECT#: 2012052