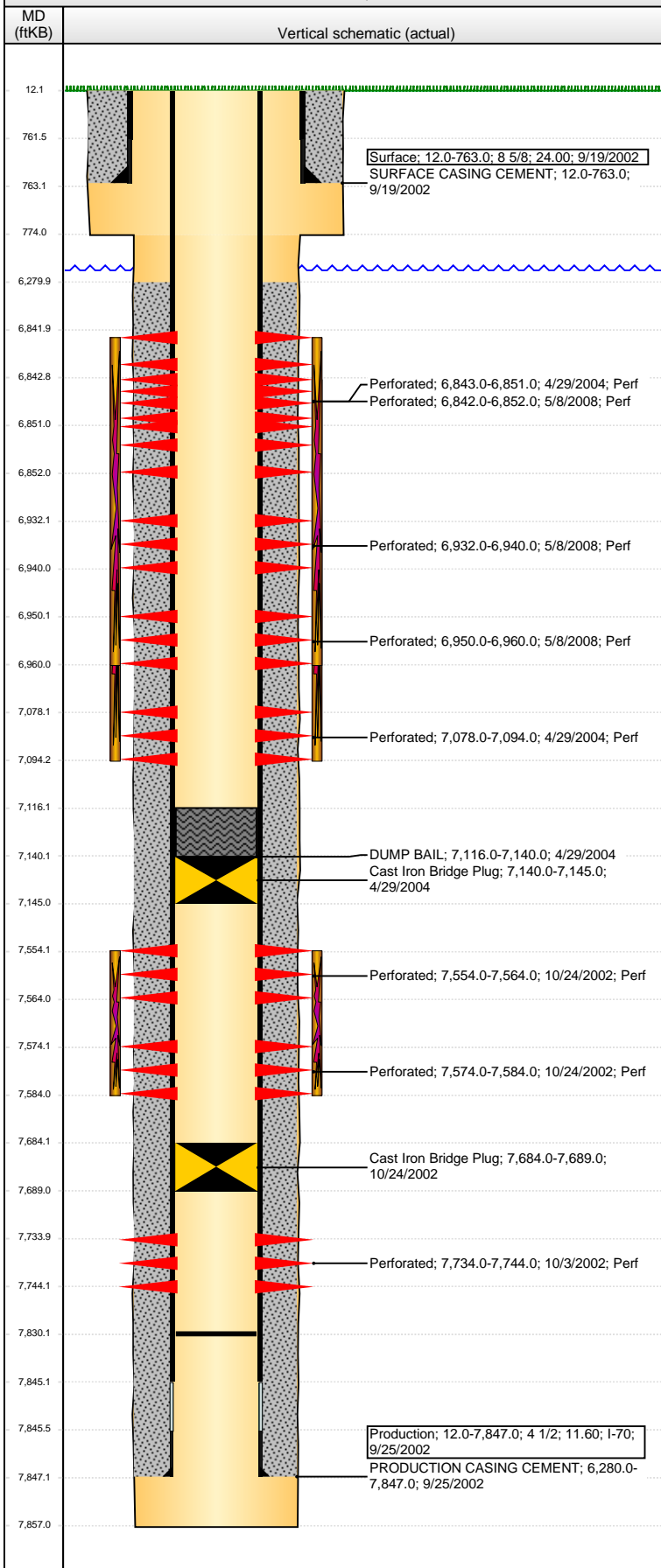


**Well Name: GRAY 10-6**

VERTICAL - ORIGINAL HOLE, 9/1/2015 8:52:35 AM



## Well Header

API 05-123-20989	Business Unit DJ BASIN	District 15	Well Config VERTICAL
Original KB Elevation (ft) 4,855.00	KB - GL / MSL (ftKB) 12.00	Spud Date 9/18/2002	P & A Date

## Comment

MISSING DRILL REPORTS FOR RECOMPLETE AND REFRAC

NO TUBING INFORMATION FOUND

## Directions To Well

## Congressional Location

Quarter 1	Quarter 2	Quarter 3	Quarter 4	Section	Township	Twntshp N...	Range	Rng E/W Dir
	SW	NW	SE	6	2	N	64	W

## Bottom Hole Location

North-South Distance (ft)	From N or S Line	East-West Distance (ft)	From E or W Line

## Plug Back Total Depths

Date	Depth (ftKB)	Method	Com
9/25/2002	7,832.0	CASING TALLY	FLOAT COLLAR ON CASING TALLY
10/3/2002	7,830.0	CASED HOLE LOG	DEPTH LOGGER ON CBL

## Wellbore Sections

Section Des	Size (in)	Act Top, MD (ftKB)	Act Btm, MD (ftKB)
SURFACE	12 1/4	12.0	774.0
PRODUCTION	7 7/8	774.0	7,857.0

## Zone Statuses

Zone Name	Status Date	Status	Fluid Type	Job	Prod Method
DAKOTA	10/24/2002	AB		DRILLING/CO...	
J SAND	12/4/2002	PR		DRILLING/CO...	
J SAND	4/29/2004	AB		RECOMPLETI...	
NIOBRARA	5/4/2004	PR		RECOMPLETI...	
NIOBRARA	5/12/2008	PR		RE-FRAC, 5/27...	
NIOBRARA	5/27/2009	PR		RE-FRAC, 5/27...	
CODELL	5/4/2004	PR		RECOMPLETI...	
CODELL	5/27/2009	PR		RE-FRAC, 5/27...	

## Casing Strings

### Surface, 763.0ftKB

Casing Description	Run Date	OD (in)	Wt/Len (l...	Grade	Top, MD (ft...	MD (ftKB)
Surface	9/19/2002	8 5/8	24.00		12.0	763.0

### Production, 7,847.0ftKB

Casing Description	Run Date	OD (in)	Wt/Len (l...	Grade	Top, MD (ft...	MD (ftKB)
Production	9/25/2002	4 1/2	11.60	I-70	12.0	7,847.0

## Cement

Description	Top Depth (ftKB)	Bottom Depth (ftKB)
SURFACE CASING CEMENT	12.0	763.0
PRODUCTION CASING CEMENT	6,280.0	7,847.0
DUMP BAIL	7,116.0	7,140.0

## Tubing Strings

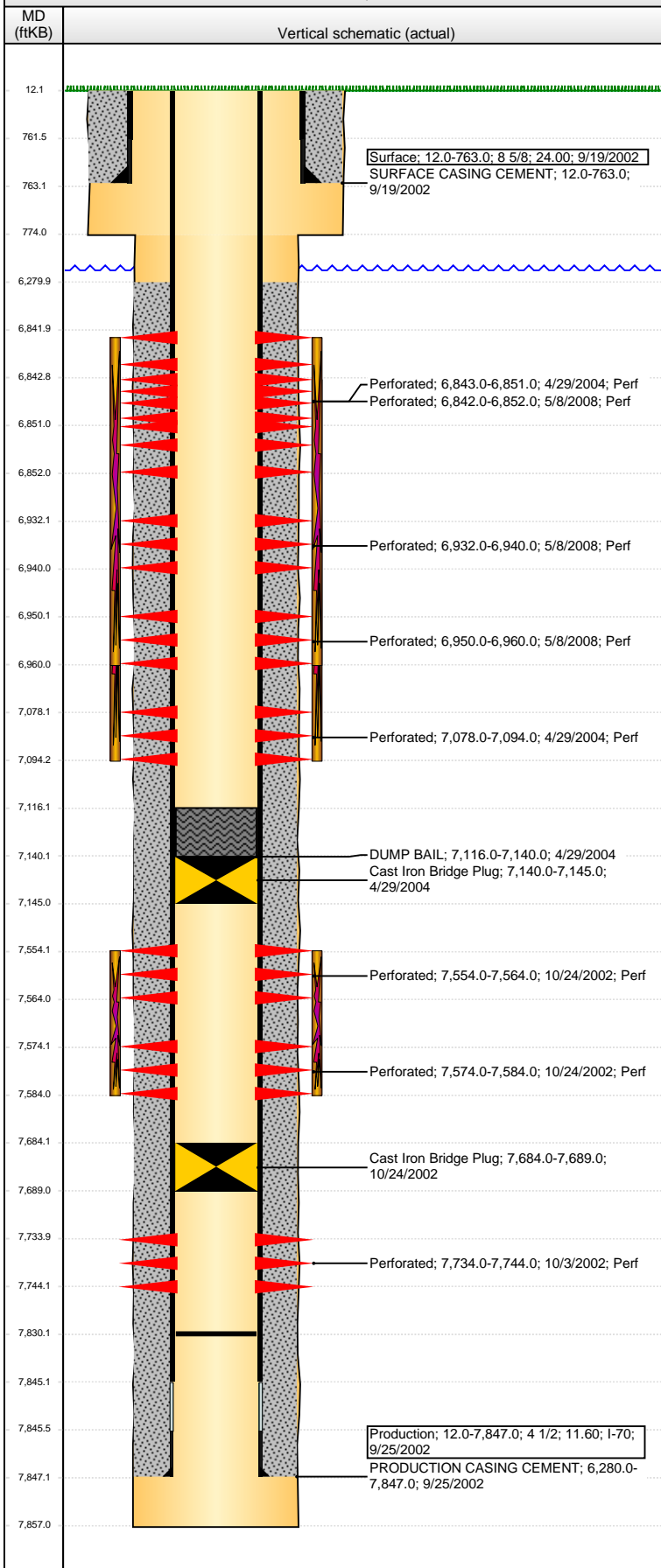
Tubing Description	Run Date	String...	ID (in)	Wt (lb/ft)	Grade	Len (ft)	Set De...

## Perforation Data

Zone	Bnch/St g	Entered Shot Total	Top (ftKB)	Btm (ftKB)	Date
NIOBRARA, ORIGINAL HOLE	B	20	6,842.00	6,852.00	5/8/2008
NIOBRARA, ORIGINAL HOLE	B	7	6,843.00	6,851.00	4/29/2004
NIOBRARA, ORIGINAL HOLE	C	16	6,932.00	6,940.00	5/8/2008
NIOBRARA, ORIGINAL HOLE	C	20	6,950.00	6,960.00	5/8/2008
CODELL, ORIGINAL HOLE		34	7,078.00	7,094.00	4/29/2004
J SAND, ORIGINAL HOLE		30	7,554.00	7,564.00	10/24/2002
J SAND, ORIGINAL HOLE		30	7,574.00	7,584.00	10/24/2002
DAKOTA, ORIGINAL HOLE		40	7,734.00	7,744.00	10/3/2002

**Well Name: GRAY 10-6**

VERTICAL - ORIGINAL HOLE, 9/1/2015 8:52:38 AM



## Stimulations & Treatments

Date	Zone	Primary Job Type
11/5/2002	J SAND, ORIGINAL HOLE	DRILLING/COMPLETION - ORIGINAL
Technical Result	Tech Result Details	Tech Result Note

Comment

Date	Zone	Primary Job Type
4/30/2004	NIOBRARA-CODELL, ORIGINAL HOLE	RECOMPLETION
Technical Result	Tech Result Details	Tech Result Note

Comment

Date	Zone	Primary Job Type
5/9/2008	NIOBRARA, ORIGINAL HOLE	RE-FRAC
Technical Result	Tech Result Details	Tech Result Note

Comment

## Other In Hole

Run Date	Des	OD (in)	Top (ftKB)	Btm (ftKB)
10/24/2002	Cast Iron Bridge Plug	4	7,684.0	7,689.0
4/29/2004	Cast Iron Bridge Plug	4	7,140.0	7,145.0

## Logs

Date	Type	Top, MD (ftKB)	Btm, MD (ftKB)
9/25/2002	GAMMA RAY	4,300.0	7,846.0
9/25/2002	INDUCTION	720.0	7,846.0
10/3/2002	CEMENT BOND	3,600.0	7,810.0