

LEGEND:

- = 90° SYMBOL
- = PROPOSED WELLHEAD.
- = TARGET BOTTOM HOLE.
- ◆ = PROPOSED TOP OF PRODUCTION
- ▲ = SECTION CORNERS LOCATED.

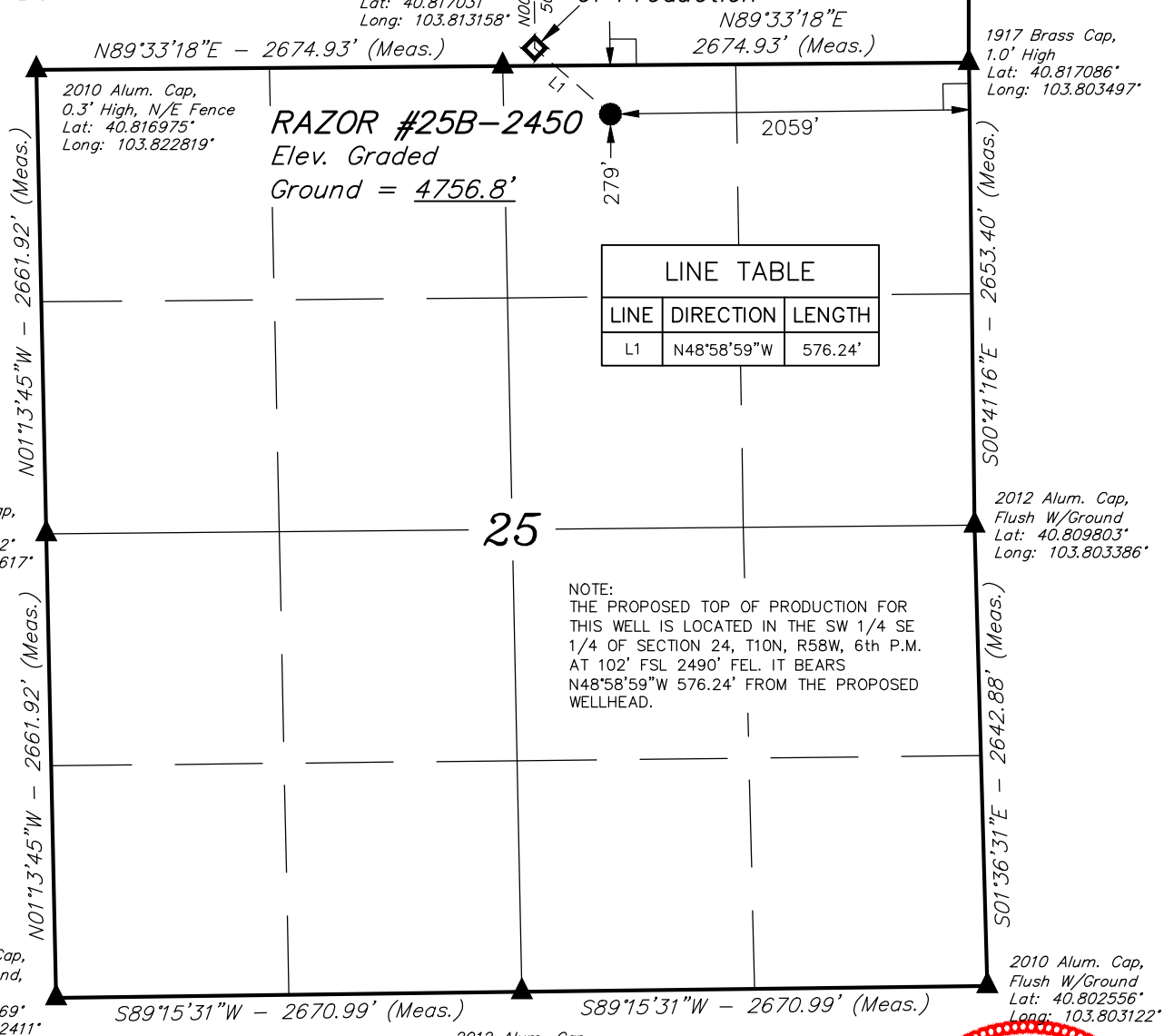
T10N, R58W, 6th P.M.

Target
Bottom Hole

Proposed Top
of Production

R
58
W

R
57
W



LINE TABLE		
LINE	DIRECTION	LENGTH
L1	N48°58'59"W	576.24'

PDOP = 1.3

NAD 83 (SURFACE LOCATION)	
LATITUDE = 40°48'58.59" (40.816275)	
LONGITUDE = 103°48'39.32" (103.810922)	
NAD 27 (SURFACE LOCATION)	
LATITUDE = 40°48'58.65" (40.816292)	
LONGITUDE = 103°48'37.52" (103.810422)	



CERTIFICATE

THIS IS TO CERTIFY THAT THE ABOVE PLAT WAS PREPARED FROM FIELD NOTES OF ACTUAL SURVEYS MADE BY ME OR UNDER MY SUPERVISION AND THAT THE SAME ARE TRUE AND CORRECT TO THE BEST OF MY KNOWLEDGE AND BELIEF.

REGISTERED LAND SURVEYOR
REGISTRATION NO. 28285
STATE OF COLORADO

BASIS OF BEARINGS
BASIS OF BEARINGS IS A G.P.S. OBSERVATION

BASIS OF ELEVATION

SPOT ELEVATION LOCATED AT THE NORTHEAST CORNER OF SECTION 15, T9N, R58W, 6th P.M. TAKEN FROM THE GATEHOOK SPRING, QUADRANGLE, COLORADO, WELD COUNTY, 7.5 MINUTE QUAD (TOPOGRAPHIC MAP) PUBLISHED BY THE UNITED STATES DEPARTMENT OF THE INTERIOR, GEOLOGICAL SURVEY. SAID ELEVATION IS MARKED AS BEING 4679 FEET.

WHITING OIL & GAS CORP.

RAZOR #25B-2450 (SURFACE LOCATION)
NW 1/4 NE 1/4, SECTION 25, T10N, R58W, 6th P.M.
WELD COUNTY, COLORADO

SURVEYED BY: JARED CHRISTOPHER, B.C.	DATE: 03-10-15
DRAWN BY: J.S.	DATE DRAWN: 03-23-15
SCALE: 1" = 1000'	REVISED: 08-18-15 M.O.E.

WELL LOCATION PLAT



UELS, LLC
Corporate Office * 85 South 200 East
Vernal, UT 84078 * (435) 789-1017



LEGEND:

- = 90° SYMBOL
 ● = PROPOSED WELLHEAD.
 ○ = TARGET BOTTOM HOLE.
 ◆ = PROPOSED TOP OF PRODUCTION
 ▲ = SECTION CORNERS LOCATED.

T10N, R58W, 6th P.M.

2012 Alum. Cap,
0.3' High
Lat: 40.831575°
Long: 103.813317°

R
58
W

2011 Alum. Cap,
0.6' Below Ground
Lat: 40.831603°
Long: 103.803653°

N89°45'45"E - 2674.52' (Meas.)

N89°45'45"E - 2674.52' (Meas.)

Set Stone
Lat: 40.831547°
Long: 103.822978°

RAZOR #25B-2450
Target Bottom Hole

N00°29'14"W - 2655.18' (Meas.)

S00°31'12"E - 2648.35' (Meas.)

2012 Alum. Cap,
0.4' High
Lat: 40.824261°
Long: 103.822900°

1917 Brass Cap,
2.0' High
Lat: 40.824336°
Long: 103.803572°

NOTE:
THE PROPOSED TOP OF PRODUCTION BEARS
N48°58'59"W 576.24' FROM THE PROPOSED
WELLHEAD WHICH IS LOCATED IN THE NW
1/4 NE 1/4 OF SECTION 25, T10N, R58W,
6th P.M. AT 279' FNL 2059' FEL.

24

LINE TABLE

LINE	DIRECTION	LENGTH
L1	N48°58'59"W	576.24'

N00°29'14"W - 2655.18' (Meas.)

S00°28'24"E - 2642.62' (Meas.)

Proposed Top
of Production

2010 Alum. Cap,
0.3' High, N/E Fence
Lat: 40.816975°
Long: 103.822819°

N89°33'18"E - 2674.93' (Meas.)

N89°33'18"E - 2674.93' (Meas.)

1917 Brass Cap,
1.0' High
Lat: 40.817086°
Long: 103.803497°

2012 Alum. Cap,
0.4' High
Lat: 40.817031°
Long: 103.813158°

● Surface Location



CERTIFICATE

THIS IS TO CERTIFY THAT THE ABOVE PLAT WAS PREPARED FROM FIELD
NOTES OF ACTUAL SURVEYS MADE BY ME OR UNDER MY SUPERVISION
AND THAT THE SAME ARE TRUE AND CORRECT TO THE BEST OF MY
KNOWLEDGE AND BELIEF.

REGISTERED LAND SURVEYOR
REGISTRATION NO. 28285
STATE OF COLORADO

NAD 83 (TARGET BOTTOM HOLE)	NAD 83 (PROPOSED TOP OF PRODUCTION)
LATITUDE = 40°49'52.69" (40.831303)	LATITUDE = 40°49'02.33" (40.817314)
LONGITUDE = 103°48'45.33" (103.812592)	LONGITUDE = 103°48'44.97" (103.812492)
NAD 27 (TARGET BOTTOM HOLE)	NAD 27 (PROPOSED TOP OF PRODUCTION)
LATITUDE = 40°49'52.74" (40.831317)	LATITUDE = 40°49'02.38" (40.817328)
LONGITUDE = 103°48'43.53" (103.812092)	LONGITUDE = 103°48'43.17" (103.811992)

BASIS OF BEARINGS

BASIS OF BEARINGS IS A G.P.S. OBSERVATION

BASIS OF ELEVATION

SPOT ELEVATION LOCATED AT THE NORTHEAST CORNER OF SECTION 15, T9N, R58W,
6th P.M. TAKEN FROM THE GATEHOOK SPRING, QUADRANGLE, COLORADO, WELD
COUNTY, 7.5 MINUTE QUAD (TOPOGRAPHIC MAP) PUBLISHED BY THE UNITED STATES
DEPARTMENT OF THE INTERIOR, GEOLOGICAL SURVEY. SAID ELEVATION IS MARKED
AS BEING 4679 FEET.

WHITING OIL & GAS CORP.

RAZOR #25B-2450 (TARGET BOTTOM HOLE)
NW 1/4 NE 1/4, SECTION 24, T10N, R58W, 6th P.M.
WELD COUNTY, COLORADO

SURVEYED BY: JARED CHRISTOPHER, B.C.	DATE: 03-10-15
DRAWN BY: J.S.	DATE DRAWN: 03-23-15
SCALE: 1" = 1000'	REVISED: 08-28-15 K.B.

WELL LOCATION PLAT



UELS, LLC
Corporate Office * 85 South 200 East
Vernal, UT 84078 * (435) 789-1017

