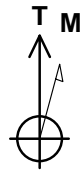
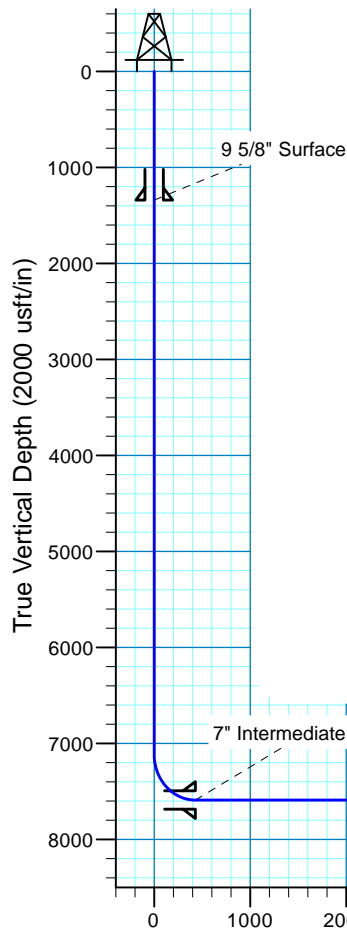
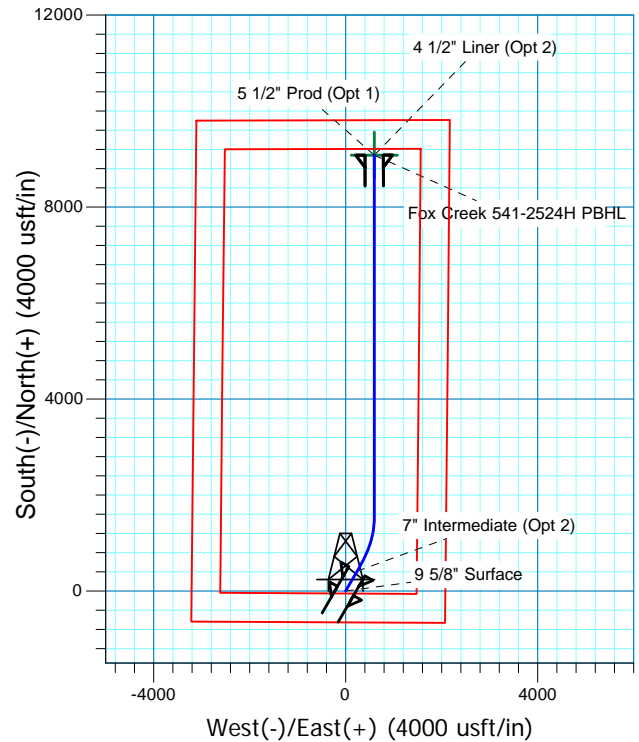


Fox Creek 541-2524H
 Sec.25-T12N-R63W
 Weld County, Colorado

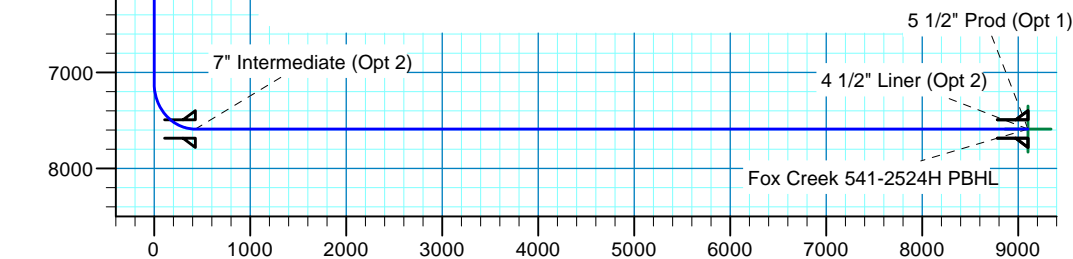
Surface Location			
NAD 1927 (NADCON CONUS) Colorado North 501			
Ground Elevation: 5398.0 RKB @ 5423.0usft (KB GL+25')			
Northing	Easting	Latitude	Longitude
600059.38	2309644.29	40° 58' 30.635 N	104° 22' 43.315 W



Azimuths to True North
 Magnetic North: 8.26°
 Magnetic Field
 Strength: 52946.8snT
 Dip Angle: 67.42°
 Date: 7/7/2015
 Model: IGRF2015



Project: DJ - Hereford Ranch
 Site: Fox Creek F25 SWSE Pad
 Well: Fox Creek 541-2524H
 Plan: APD Plan (Plat Cert 6/2/15)



Vertical Section at 3.76° (2000 usft/in)

SECTION DETAILS										
Sec	MD	Inc	Azi	TVD	+N/-S	+E/-W	Dleg	TFace	VSect	Target
1	0.0	0.00	0.00	0.0	0.0	0.0	0.00	0.00	0.0	
2	7113.5	0.00	0.00	7113.5	0.0	0.0	0.00	0.00	0.0	
3	7863.5	90.00	30.00	7591.0	413.5	238.7	12.00	30.00	428.3	
4	8068.5	90.00	30.00	7591.0	591.0	341.2	0.00	0.00	612.1	
5	9068.6	90.00	360.00	7591.0	1546.0	597.1	3.00	-90.00	1581.8	Fox Creek 541-2524H PBHL
6	16605.1	90.00	360.00	7591.0	9082.6	596.9	0.00	0.00	9102.2	Fox Creek 541-2524H PBHL
TARGET DETAILS										
Name	TVD	+N/-S	+E/-W	Northing	Easting	Latitude	Longitude	Shape		
Fox Creek 541-2524H PBHL	7591.0	9082.6	596.9	609148.81	2310126.26	41° 0' 0.374 N	104° 22' 35.532 W	Point		

Denver Division- Colorado

**DJ - Hereford Ranch
Fox Creek F25 SWSE Pad
Fox Creek 541-2524H**

OH

Plan: APD Plan (Plat Cert 6/2/15)

Standard Planning Report

07 July, 2015

EOG Resources, Inc.

Planning Report

Database:	EDM_DENVER	Local Co-ordinate Reference:	Well Fox Creek 541-2524H
Company:	Denver Division- Colorado	TVD Reference:	RKB @ 5423.0usft (KB GL+25')
Project:	DJ - Hereford Ranch	MD Reference:	RKB @ 5423.0usft (KB GL+25')
Site:	Fox Creek F25 SWSE Pad	North Reference:	True
Well:	Fox Creek 541-2524H	Survey Calculation Method:	Minimum Curvature
Wellbore:	OH		
Design:	APD Plan (Plat Cert 6/2/15)		

Project	DJ - Hereford Ranch, Weld County		
Map System:	US State Plane 1927 (Exact solution)	System Datum:	Mean Sea Level
Geo Datum:	NAD 1927 (NADCON CONUS)		
Map Zone:	Colorado North 501		

Site	Fox Creek F25 SWSE Pad		
Site Position:		Northing:	600,100.00 usft
From:	Map	Easting:	2,309,500.00 usft
Position Uncertainty:	0.0 usft	Slot Radius:	13-3/16 "
		Latitude:	40° 58' 31.054 N
		Longitude:	104° 22' 45.190 W
		Grid Convergence:	0.72 °

Well	Fox Creek 541-2524H		
Well Position	+N/-S	-42.4 usft	Northing:
	+E/-W	143.8 usft	Easting:
Position Uncertainty	0.0 usft	Wellhead Elevation:	0.0 usft
		Latitude:	40° 58' 30.635 N
		Longitude:	104° 22' 43.315 W
		Ground Level:	5,398.0 usft

Wellbore	OH				
Magnetics	Model Name	Sample Date	Declination (°)	Dip Angle (°)	Field Strength (nT)
	IGRF2015	7/7/2015	8.26	67.42	52,947

Design	APD Plan (Plat Cert 6/2/15)			
Audit Notes:				
Version:	Phase:	PROTOTYPE	Tie On Depth:	0.0
Vertical Section:	Depth From (TVD) (usft)	+N/-S (usft)	+E/-W (usft)	Direction (°)
	0.0	0.0	0.0	3.76

Plan Sections										
Measured Depth (usft)	Inclination (°)	Azimuth (°)	Vertical Depth (usft)	+N/-S (usft)	+E/-W (usft)	Dogleg Rate (°/100usft)	Build Rate (°/100usft)	Turn Rate (°/100usft)	TFO (°)	Target
0.0	0.00	0.00	0.0	0.0	0.0	0.00	0.00	0.00	0.00	
7,113.5	0.00	0.00	7,113.5	0.0	0.0	0.00	0.00	0.00	0.00	
7,863.5	90.00	30.00	7,591.0	413.5	238.7	12.00	12.00	0.00	30.00	
8,068.5	90.00	30.00	7,591.0	591.0	341.2	0.00	0.00	0.00	0.00	
9,068.6	90.00	360.00	7,591.0	1,546.0	597.1	3.00	0.00	-3.00	-90.00	Fox Creek 541-2524H
16,605.1	90.00	360.00	7,591.0	9,082.6	596.9	0.00	0.00	0.00	0.00	Fox Creek 541-2524H

EOG Resources, Inc.

Planning Report

Database:	EDM_DENVER	Local Co-ordinate Reference:	Well Fox Creek 541-2524H
Company:	Denver Division- Colorado	TVD Reference:	RKB @ 5423.0usft (KB GL+25')
Project:	DJ - Hereford Ranch	MD Reference:	RKB @ 5423.0usft (KB GL+25')
Site:	Fox Creek F25 SWSE Pad	North Reference:	True
Well:	Fox Creek 541-2524H	Survey Calculation Method:	Minimum Curvature
Wellbore:	OH		
Design:	APD Plan (Plat Cert 6/2/15)		

Planned Survey									
Measured Depth (usft)	Inclination (°)	Azimuth (°)	Vertical Depth (usft)	+N/-S (usft)	+E/-W (usft)	Vertical Section (usft)	Dogleg Rate (°/100usft)	Build Rate (°/100usft)	Turn Rate (°/100usft)
0.0	0.00	0.00	0.0	0.0	0.0	0.0	0.00	0.00	0.00
100.0	0.00	0.00	100.0	0.0	0.0	0.0	0.00	0.00	0.00
200.0	0.00	0.00	200.0	0.0	0.0	0.0	0.00	0.00	0.00
300.0	0.00	0.00	300.0	0.0	0.0	0.0	0.00	0.00	0.00
400.0	0.00	0.00	400.0	0.0	0.0	0.0	0.00	0.00	0.00
500.0	0.00	0.00	500.0	0.0	0.0	0.0	0.00	0.00	0.00
600.0	0.00	0.00	600.0	0.0	0.0	0.0	0.00	0.00	0.00
700.0	0.00	0.00	700.0	0.0	0.0	0.0	0.00	0.00	0.00
800.0	0.00	0.00	800.0	0.0	0.0	0.0	0.00	0.00	0.00
900.0	0.00	0.00	900.0	0.0	0.0	0.0	0.00	0.00	0.00
1,000.0	0.00	0.00	1,000.0	0.0	0.0	0.0	0.00	0.00	0.00
1,100.0	0.00	0.00	1,100.0	0.0	0.0	0.0	0.00	0.00	0.00
1,200.0	0.00	0.00	1,200.0	0.0	0.0	0.0	0.00	0.00	0.00
1,300.0	0.00	0.00	1,300.0	0.0	0.0	0.0	0.00	0.00	0.00
1,341.0	0.00	0.00	1,341.0	0.0	0.0	0.0	0.00	0.00	0.00
9 5/8" Surface									
1,400.0	0.00	0.00	1,400.0	0.0	0.0	0.0	0.00	0.00	0.00
1,500.0	0.00	0.00	1,500.0	0.0	0.0	0.0	0.00	0.00	0.00
1,600.0	0.00	0.00	1,600.0	0.0	0.0	0.0	0.00	0.00	0.00
1,700.0	0.00	0.00	1,700.0	0.0	0.0	0.0	0.00	0.00	0.00
1,800.0	0.00	0.00	1,800.0	0.0	0.0	0.0	0.00	0.00	0.00
1,900.0	0.00	0.00	1,900.0	0.0	0.0	0.0	0.00	0.00	0.00
2,000.0	0.00	0.00	2,000.0	0.0	0.0	0.0	0.00	0.00	0.00
2,100.0	0.00	0.00	2,100.0	0.0	0.0	0.0	0.00	0.00	0.00
2,200.0	0.00	0.00	2,200.0	0.0	0.0	0.0	0.00	0.00	0.00
2,300.0	0.00	0.00	2,300.0	0.0	0.0	0.0	0.00	0.00	0.00
2,400.0	0.00	0.00	2,400.0	0.0	0.0	0.0	0.00	0.00	0.00
2,500.0	0.00	0.00	2,500.0	0.0	0.0	0.0	0.00	0.00	0.00
2,600.0	0.00	0.00	2,600.0	0.0	0.0	0.0	0.00	0.00	0.00
2,700.0	0.00	0.00	2,700.0	0.0	0.0	0.0	0.00	0.00	0.00
2,800.0	0.00	0.00	2,800.0	0.0	0.0	0.0	0.00	0.00	0.00
2,900.0	0.00	0.00	2,900.0	0.0	0.0	0.0	0.00	0.00	0.00
3,000.0	0.00	0.00	3,000.0	0.0	0.0	0.0	0.00	0.00	0.00
3,100.0	0.00	0.00	3,100.0	0.0	0.0	0.0	0.00	0.00	0.00
3,200.0	0.00	0.00	3,200.0	0.0	0.0	0.0	0.00	0.00	0.00
3,300.0	0.00	0.00	3,300.0	0.0	0.0	0.0	0.00	0.00	0.00
3,400.0	0.00	0.00	3,400.0	0.0	0.0	0.0	0.00	0.00	0.00
3,500.0	0.00	0.00	3,500.0	0.0	0.0	0.0	0.00	0.00	0.00
3,600.0	0.00	0.00	3,600.0	0.0	0.0	0.0	0.00	0.00	0.00
3,700.0	0.00	0.00	3,700.0	0.0	0.0	0.0	0.00	0.00	0.00
3,800.0	0.00	0.00	3,800.0	0.0	0.0	0.0	0.00	0.00	0.00
3,900.0	0.00	0.00	3,900.0	0.0	0.0	0.0	0.00	0.00	0.00
4,000.0	0.00	0.00	4,000.0	0.0	0.0	0.0	0.00	0.00	0.00
4,100.0	0.00	0.00	4,100.0	0.0	0.0	0.0	0.00	0.00	0.00
4,200.0	0.00	0.00	4,200.0	0.0	0.0	0.0	0.00	0.00	0.00
4,300.0	0.00	0.00	4,300.0	0.0	0.0	0.0	0.00	0.00	0.00
4,400.0	0.00	0.00	4,400.0	0.0	0.0	0.0	0.00	0.00	0.00
4,500.0	0.00	0.00	4,500.0	0.0	0.0	0.0	0.00	0.00	0.00
4,600.0	0.00	0.00	4,600.0	0.0	0.0	0.0	0.00	0.00	0.00
4,700.0	0.00	0.00	4,700.0	0.0	0.0	0.0	0.00	0.00	0.00
4,800.0	0.00	0.00	4,800.0	0.0	0.0	0.0	0.00	0.00	0.00
4,900.0	0.00	0.00	4,900.0	0.0	0.0	0.0	0.00	0.00	0.00
5,000.0	0.00	0.00	5,000.0	0.0	0.0	0.0	0.00	0.00	0.00
5,100.0	0.00	0.00	5,100.0	0.0	0.0	0.0	0.00	0.00	0.00

EOG Resources, Inc.

Planning Report

Database:	EDM_DENVER	Local Co-ordinate Reference:	Well Fox Creek 541-2524H
Company:	Denver Division- Colorado	TVD Reference:	RKB @ 5423.0usft (KB GL+25')
Project:	DJ - Hereford Ranch	MD Reference:	RKB @ 5423.0usft (KB GL+25')
Site:	Fox Creek F25 SWSE Pad	North Reference:	True
Well:	Fox Creek 541-2524H	Survey Calculation Method:	Minimum Curvature
Wellbore:	OH		
Design:	APD Plan (Plat Cert 6/2/15)		

Planned Survey									
Measured Depth (usft)	Inclination (°)	Azimuth (°)	Vertical Depth (usft)	+N/-S (usft)	+E/-W (usft)	Vertical Section (usft)	Dogleg Rate (°/100usft)	Build Rate (°/100usft)	Turn Rate (°/100usft)
5,200.0	0.00	0.00	5,200.0	0.0	0.0	0.0	0.00	0.00	0.00
5,300.0	0.00	0.00	5,300.0	0.0	0.0	0.0	0.00	0.00	0.00
5,400.0	0.00	0.00	5,400.0	0.0	0.0	0.0	0.00	0.00	0.00
5,500.0	0.00	0.00	5,500.0	0.0	0.0	0.0	0.00	0.00	0.00
5,600.0	0.00	0.00	5,600.0	0.0	0.0	0.0	0.00	0.00	0.00
5,700.0	0.00	0.00	5,700.0	0.0	0.0	0.0	0.00	0.00	0.00
5,800.0	0.00	0.00	5,800.0	0.0	0.0	0.0	0.00	0.00	0.00
5,900.0	0.00	0.00	5,900.0	0.0	0.0	0.0	0.00	0.00	0.00
6,000.0	0.00	0.00	6,000.0	0.0	0.0	0.0	0.00	0.00	0.00
6,100.0	0.00	0.00	6,100.0	0.0	0.0	0.0	0.00	0.00	0.00
6,200.0	0.00	0.00	6,200.0	0.0	0.0	0.0	0.00	0.00	0.00
6,300.0	0.00	0.00	6,300.0	0.0	0.0	0.0	0.00	0.00	0.00
6,400.0	0.00	0.00	6,400.0	0.0	0.0	0.0	0.00	0.00	0.00
6,500.0	0.00	0.00	6,500.0	0.0	0.0	0.0	0.00	0.00	0.00
6,600.0	0.00	0.00	6,600.0	0.0	0.0	0.0	0.00	0.00	0.00
6,700.0	0.00	0.00	6,700.0	0.0	0.0	0.0	0.00	0.00	0.00
6,800.0	0.00	0.00	6,800.0	0.0	0.0	0.0	0.00	0.00	0.00
6,900.0	0.00	0.00	6,900.0	0.0	0.0	0.0	0.00	0.00	0.00
7,000.0	0.00	0.00	7,000.0	0.0	0.0	0.0	0.00	0.00	0.00
7,100.0	0.00	0.00	7,100.0	0.0	0.0	0.0	0.00	0.00	0.00
7,113.5	0.00	0.00	7,113.5	0.0	0.0	0.0	0.00	0.00	0.00
7,200.0	10.38	30.00	7,199.5	6.8	3.9	7.0	12.00	12.00	0.00
7,300.0	22.38	30.00	7,295.3	31.1	18.0	32.3	12.00	12.00	0.00
7,400.0	34.38	30.00	7,383.1	72.2	41.7	74.8	12.00	12.00	0.00
7,500.0	46.38	30.00	7,459.2	128.2	74.0	132.8	12.00	12.00	0.00
7,600.0	58.38	30.00	7,520.1	196.7	113.6	203.7	12.00	12.00	0.00
7,700.0	70.38	30.00	7,563.2	274.7	158.6	284.5	12.00	12.00	0.00
7,800.0	82.38	30.00	7,586.7	358.7	207.1	371.5	12.00	12.00	0.00
7,863.5	90.00	30.00	7,591.0	413.5	238.7	428.3	12.00	12.00	0.00
7,864.0	90.00	30.00	7,591.0	413.9	239.0	428.7	0.00	0.00	0.00
7" Intermediate (Opt 2)									
7,900.0	90.00	30.00	7,591.0	445.1	257.0	461.0	0.00	0.00	0.00
8,000.0	90.00	30.00	7,591.0	531.7	307.0	550.7	0.00	0.00	0.00
8,068.5	90.00	30.00	7,591.0	591.0	341.2	612.1	0.00	0.00	0.00
8,100.0	90.00	29.06	7,591.0	618.4	356.8	640.5	3.00	0.00	-3.00
8,200.0	90.00	26.06	7,591.0	707.1	403.0	732.0	3.00	0.00	-3.00
8,300.0	90.00	23.06	7,591.0	798.0	444.6	825.5	3.00	0.00	-3.00
8,400.0	90.00	20.06	7,591.0	891.0	481.3	920.7	3.00	0.00	-3.00
8,500.0	90.00	17.06	7,591.0	985.8	513.1	1,017.3	3.00	0.00	-3.00
8,600.0	90.00	14.06	7,591.0	1,082.1	539.9	1,115.2	3.00	0.00	-3.00
8,700.0	90.00	11.06	7,591.0	1,179.7	561.7	1,214.0	3.00	0.00	-3.00
8,800.0	90.00	8.06	7,591.0	1,278.3	578.3	1,313.5	3.00	0.00	-3.00
8,900.0	90.00	5.06	7,591.0	1,377.7	589.7	1,413.4	3.00	0.00	-3.00
9,000.0	90.00	2.06	7,591.0	1,477.5	595.9	1,513.4	3.00	0.00	-3.00
9,068.6	90.00	360.00	7,591.0	1,546.0	597.1	1,581.8	3.00	0.00	-3.00
9,100.0	90.00	360.00	7,591.0	1,577.5	597.1	1,613.2	0.00	0.00	0.00
9,200.0	90.00	360.00	7,591.0	1,677.5	597.1	1,713.0	0.00	0.00	0.00
9,300.0	90.00	360.00	7,591.0	1,777.5	597.1	1,812.8	0.00	0.00	0.00
9,400.0	90.00	360.00	7,591.0	1,877.5	597.1	1,912.6	0.00	0.00	0.00
9,500.0	90.00	360.00	7,591.0	1,977.5	597.1	2,012.4	0.00	0.00	0.00
9,600.0	90.00	360.00	7,591.0	2,077.5	597.1	2,112.1	0.00	0.00	0.00
9,700.0	90.00	360.00	7,591.0	2,177.5	597.1	2,211.9	0.00	0.00	0.00
9,800.0	90.00	360.00	7,591.0	2,277.5	597.1	2,311.7	0.00	0.00	0.00

EOG Resources, Inc.

Planning Report

Database:	EDM_DENVER	Local Co-ordinate Reference:	Well Fox Creek 541-2524H
Company:	Denver Division- Colorado	TVD Reference:	RKB @ 5423.0usft (KB GL+25')
Project:	DJ - Hereford Ranch	MD Reference:	RKB @ 5423.0usft (KB GL+25')
Site:	Fox Creek F25 SWSE Pad	North Reference:	True
Well:	Fox Creek 541-2524H	Survey Calculation Method:	Minimum Curvature
Wellbore:	OH		
Design:	APD Plan (Plat Cert 6/2/15)		

Planned Survey									
Measured Depth (usft)	Inclination (°)	Azimuth (°)	Vertical Depth (usft)	+N/-S (usft)	+E/-W (usft)	Vertical Section (usft)	Dogleg Rate (°/100usft)	Build Rate (°/100usft)	Turn Rate (°/100usft)
9,900.0	90.00	360.00	7,591.0	2,377.5	597.1	2,411.5	0.00	0.00	0.00
10,000.0	90.00	360.00	7,591.0	2,477.5	597.1	2,511.3	0.00	0.00	0.00
10,100.0	90.00	360.00	7,591.0	2,577.5	597.1	2,611.1	0.00	0.00	0.00
10,200.0	90.00	360.00	7,591.0	2,677.5	597.1	2,710.9	0.00	0.00	0.00
10,300.0	90.00	360.00	7,591.0	2,777.5	597.1	2,810.6	0.00	0.00	0.00
10,400.0	90.00	360.00	7,591.0	2,877.5	597.1	2,910.4	0.00	0.00	0.00
10,500.0	90.00	360.00	7,591.0	2,977.5	597.1	3,010.2	0.00	0.00	0.00
10,600.0	90.00	360.00	7,591.0	3,077.5	597.1	3,110.0	0.00	0.00	0.00
10,700.0	90.00	360.00	7,591.0	3,177.5	597.1	3,209.8	0.00	0.00	0.00
10,800.0	90.00	360.00	7,591.0	3,277.5	597.0	3,309.6	0.00	0.00	0.00
10,900.0	90.00	360.00	7,591.0	3,377.5	597.0	3,409.3	0.00	0.00	0.00
11,000.0	90.00	360.00	7,591.0	3,477.5	597.0	3,509.1	0.00	0.00	0.00
11,100.0	90.00	360.00	7,591.0	3,577.5	597.0	3,608.9	0.00	0.00	0.00
11,200.0	90.00	360.00	7,591.0	3,677.5	597.0	3,708.7	0.00	0.00	0.00
11,300.0	90.00	360.00	7,591.0	3,777.5	597.0	3,808.5	0.00	0.00	0.00
11,400.0	90.00	360.00	7,591.0	3,877.5	597.0	3,908.3	0.00	0.00	0.00
11,500.0	90.00	360.00	7,591.0	3,977.5	597.0	4,008.1	0.00	0.00	0.00
11,600.0	90.00	360.00	7,591.0	4,077.5	597.0	4,107.8	0.00	0.00	0.00
11,700.0	90.00	360.00	7,591.0	4,177.5	597.0	4,207.6	0.00	0.00	0.00
11,800.0	90.00	360.00	7,591.0	4,277.5	597.0	4,307.4	0.00	0.00	0.00
11,900.0	90.00	360.00	7,591.0	4,377.5	597.0	4,407.2	0.00	0.00	0.00
12,000.0	90.00	360.00	7,591.0	4,477.5	597.0	4,507.0	0.00	0.00	0.00
12,100.0	90.00	360.00	7,591.0	4,577.5	597.0	4,606.8	0.00	0.00	0.00
12,200.0	90.00	360.00	7,591.0	4,677.5	597.0	4,706.5	0.00	0.00	0.00
12,300.0	90.00	360.00	7,591.0	4,777.5	597.0	4,806.3	0.00	0.00	0.00
12,400.0	90.00	360.00	7,591.0	4,877.5	597.0	4,906.1	0.00	0.00	0.00
12,500.0	90.00	360.00	7,591.0	4,977.5	597.0	5,005.9	0.00	0.00	0.00
12,600.0	90.00	360.00	7,591.0	5,077.5	597.0	5,105.7	0.00	0.00	0.00
12,700.0	90.00	360.00	7,591.0	5,177.5	597.0	5,205.5	0.00	0.00	0.00
12,800.0	90.00	360.00	7,591.0	5,277.5	597.0	5,305.2	0.00	0.00	0.00
12,900.0	90.00	360.00	7,591.0	5,377.5	597.0	5,405.0	0.00	0.00	0.00
13,000.0	90.00	360.00	7,591.0	5,477.5	597.0	5,504.8	0.00	0.00	0.00
13,100.0	90.00	360.00	7,591.0	5,577.5	597.0	5,604.6	0.00	0.00	0.00
13,200.0	90.00	360.00	7,591.0	5,677.5	597.0	5,704.4	0.00	0.00	0.00
13,300.0	90.00	360.00	7,591.0	5,777.5	597.0	5,804.2	0.00	0.00	0.00
13,400.0	90.00	360.00	7,591.0	5,877.5	597.0	5,904.0	0.00	0.00	0.00
13,500.0	90.00	360.00	7,591.0	5,977.5	597.0	6,003.7	0.00	0.00	0.00
13,600.0	90.00	360.00	7,591.0	6,077.5	597.0	6,103.5	0.00	0.00	0.00
13,700.0	90.00	360.00	7,591.0	6,177.5	597.0	6,203.3	0.00	0.00	0.00
13,800.0	90.00	360.00	7,591.0	6,277.5	597.0	6,303.1	0.00	0.00	0.00
13,900.0	90.00	360.00	7,591.0	6,377.5	597.0	6,402.9	0.00	0.00	0.00
14,000.0	90.00	360.00	7,591.0	6,477.5	596.9	6,502.7	0.00	0.00	0.00
14,100.0	90.00	360.00	7,591.0	6,577.5	596.9	6,602.4	0.00	0.00	0.00
14,200.0	90.00	360.00	7,591.0	6,677.5	596.9	6,702.2	0.00	0.00	0.00
14,300.0	90.00	360.00	7,591.0	6,777.5	596.9	6,802.0	0.00	0.00	0.00
14,400.0	90.00	360.00	7,591.0	6,877.5	596.9	6,901.8	0.00	0.00	0.00
14,500.0	90.00	360.00	7,591.0	6,977.5	596.9	7,001.6	0.00	0.00	0.00
14,600.0	90.00	360.00	7,591.0	7,077.5	596.9	7,101.4	0.00	0.00	0.00
14,700.0	90.00	360.00	7,591.0	7,177.5	596.9	7,201.2	0.00	0.00	0.00
14,800.0	90.00	360.00	7,591.0	7,277.5	596.9	7,300.9	0.00	0.00	0.00
14,900.0	90.00	360.00	7,591.0	7,377.5	596.9	7,400.7	0.00	0.00	0.00
15,000.0	90.00	360.00	7,591.0	7,477.5	596.9	7,500.5	0.00	0.00	0.00
15,100.0	90.00	360.00	7,591.0	7,577.5	596.9	7,600.3	0.00	0.00	0.00
15,200.0	90.00	360.00	7,591.0	7,677.5	596.9	7,700.1	0.00	0.00	0.00

EOG Resources, Inc.

Planning Report

Database:	EDM_DENVER	Local Co-ordinate Reference:	Well Fox Creek 541-2524H
Company:	Denver Division- Colorado	TVD Reference:	RKB @ 5423.0usft (KB GL+25')
Project:	DJ - Hereford Ranch	MD Reference:	RKB @ 5423.0usft (KB GL+25')
Site:	Fox Creek F25 SWSE Pad	North Reference:	True
Well:	Fox Creek 541-2524H	Survey Calculation Method:	Minimum Curvature
Wellbore:	OH		
Design:	APD Plan (Plat Cert 6/2/15)		

Planned Survey										
Measured Depth (usft)	Inclination (°)	Azimuth (°)	Vertical Depth (usft)	+N/-S (usft)	+E/-W (usft)	Vertical Section (usft)	Dogleg Rate (°/100usft)	Build Rate (°/100usft)	Turn Rate (°/100usft)	
15,300.0	90.00	360.00	7,591.0	7,777.5	596.9	7,799.9	0.00	0.00	0.00	
15,400.0	90.00	360.00	7,591.0	7,877.5	596.9	7,899.6	0.00	0.00	0.00	
15,500.0	90.00	360.00	7,591.0	7,977.5	596.9	7,999.4	0.00	0.00	0.00	
15,600.0	90.00	360.00	7,591.0	8,077.5	596.9	8,099.2	0.00	0.00	0.00	
15,700.0	90.00	360.00	7,591.0	8,177.5	596.9	8,199.0	0.00	0.00	0.00	
15,800.0	90.00	360.00	7,591.0	8,277.5	596.9	8,298.8	0.00	0.00	0.00	
15,900.0	90.00	360.00	7,591.0	8,377.5	596.9	8,398.6	0.00	0.00	0.00	
16,000.0	90.00	360.00	7,591.0	8,477.5	596.9	8,498.4	0.00	0.00	0.00	
16,100.0	90.00	360.00	7,591.0	8,577.5	596.9	8,598.1	0.00	0.00	0.00	
16,200.0	90.00	360.00	7,591.0	8,677.5	596.9	8,697.9	0.00	0.00	0.00	
16,300.0	90.00	360.00	7,591.0	8,777.5	596.9	8,797.7	0.00	0.00	0.00	
16,400.0	90.00	360.00	7,591.0	8,877.5	596.9	8,897.5	0.00	0.00	0.00	
16,500.0	90.00	360.00	7,591.0	8,977.5	596.9	8,997.3	0.00	0.00	0.00	
16,600.0	90.00	360.00	7,591.0	9,077.5	596.9	9,097.1	0.00	0.00	0.00	
16,605.1	90.00	360.00	7,591.0	9,082.6	596.9	9,102.2	0.00	0.00	0.00	
5 1/2" Prod (Opt 1) - 4 1/2" Liner (Opt 2)										

Design Targets										
Target Name	Dip Angle (°)	Dip Dir. (°)	TVD (usft)	+N/-S (usft)	+E/-W (usft)	Northing (usft)	Easting (usft)	Latitude	Longitude	
- hit/miss target										
- Shape										
Fox Creek 541-2524H P	0.00	0.00	7,591.0	9,082.6	596.9	609,148.81	2,310,126.26	41° 0' 0.374 N	104° 22' 35.532 W	
- plan misses target center by 0.1usft at 16605.1usft MD (7591.0 TVD, 9082.6 N, 596.9 E)										
- Point										

Casing Points						
Measured Depth (usft)	Vertical Depth (usft)	Name	Casing Diameter (")	Hole Diameter (")		
1,341.0	1,341.0	9 5/8" Surface	9-5/8	13-1/2		
7,864.0	7,591.0	7" Intermediate (Opt 2)	7	8-3/4		
16,605.1	7,591.0	5 1/2" Prod (Opt 1)	5-1/2	7-7/8		
16,605.1	7,591.0	4 1/2" Liner (Opt 2)	4-1/2	6-1/8		