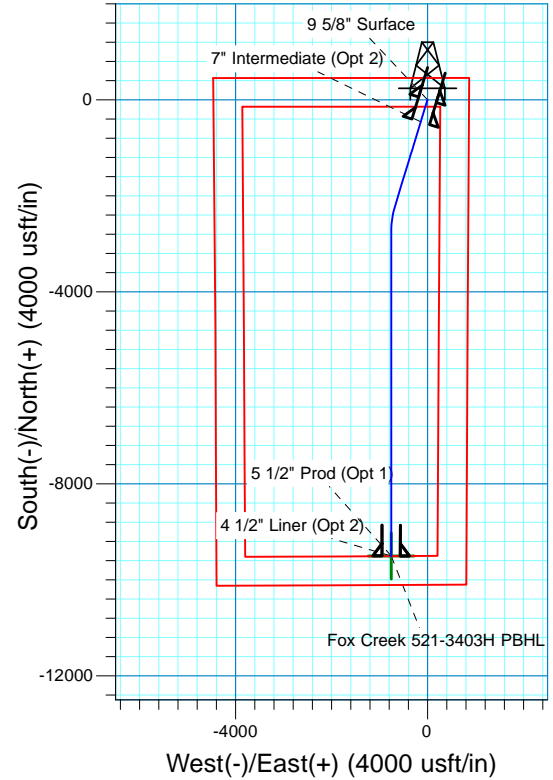
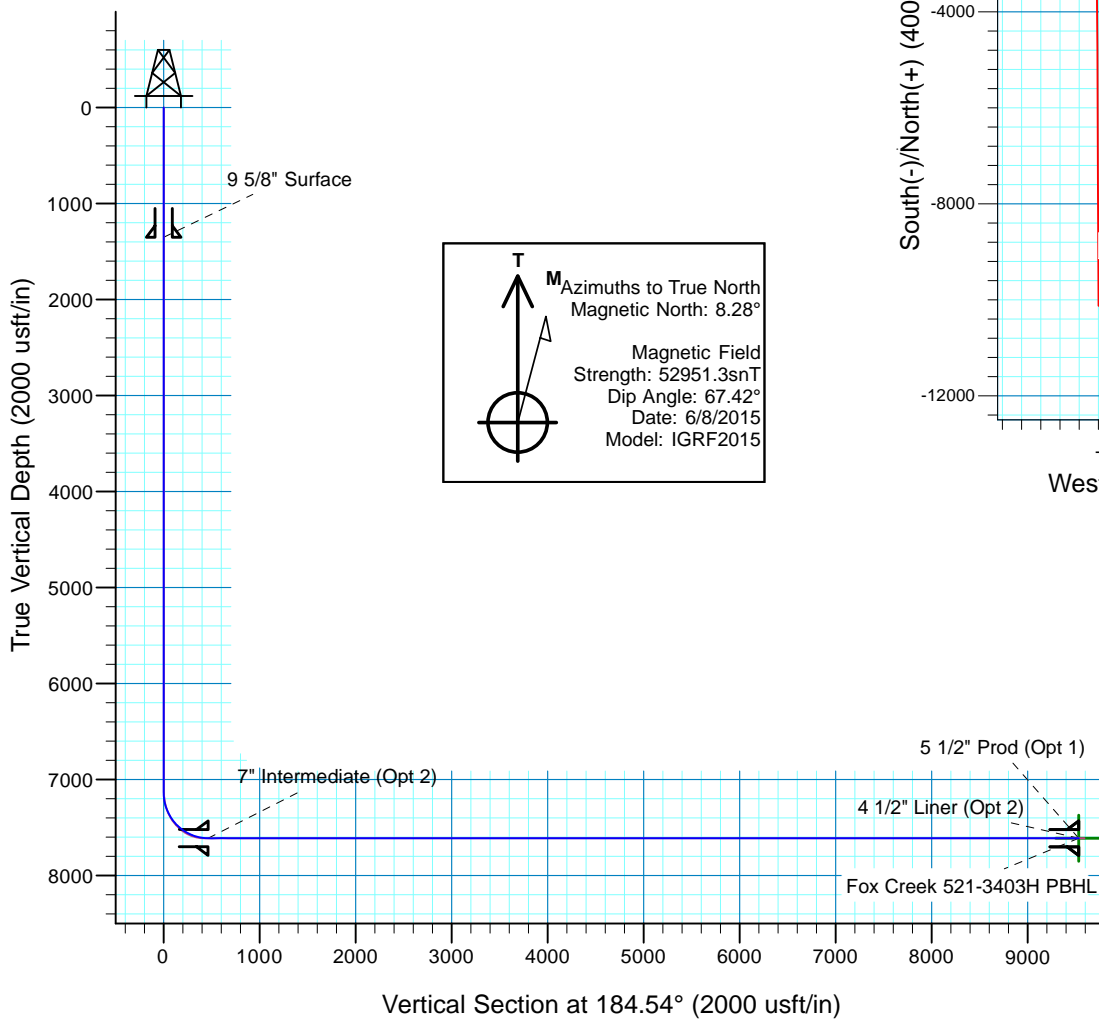




**Fox Creek 521-3403H**  
Section 34-T12N-R63W  
Weld County, CO

#### Surface Location

NAD 1927 (NADCON CONUS) Colorado North 501  
Ground Elevation: 5352.0 RKB @ 5377.0usft (KB GL+25')  
Northing Easting Latitude Longitude  
598746.99 2300443.98 40° 58' 18.801 N 104° 24' 43.453 W



Project: DJ - Hereford Ranch  
Site: Fox Creek F34 NENE Pad  
Well: Fox Creek 521-3403H  
Plan: APD (Plat Cert 4/30/15)

#### SECTION DETAILS

Sec	MD	Inc	Azi	TVD	+N/-S	+E/-W	Dleg	TFace	VSect	Target
1	0.0	0.00	0.00	0.0	0.0	0.0	0.00	0.00	0.0	
2	7135.5	0.00	0.00	7135.5	0.0	0.0	0.00	0.00	0.0	
3	7885.5	90.00	197.00	7613.0	-456.6	-139.6	12.00	197.00	466.2	
4	9705.5	90.00	197.00	7613.0	-2197.1	-671.7	0.00	0.00	2243.4	
5	10272.1	90.00	180.00	7613.0	-2755.4	-755.2	3.00	-90.00	2806.6	Fox Creek 521-3403H PBHL
6	17020.5	90.00	180.00	7613.0	-9503.8	-755.5	0.00	0.00	9533.8	Fox Creek 521-3403H PBHL

#### TARGET DETAILS

Name	TVD	+N/-S	+E/-W	Northing	Easting	Latitude	Longitude	Shape
Fox Creek 521-3403H PBHL	7613.0	-9503.8	-755.5	589234.60	2299805.17	40° 56' 44.898 N	104° 24' 53.297 W	Point

# **Denver Division- Colorado**

**DJ - Hereford Ranch  
Fox Creek F34 NENE Pad  
Fox Creek 521-3403H**

**OH**

**Plan: APD (Plat Cert 4/30/15)**

## **Standard Planning Report**

**12 August, 2015**

# EOG Resources, Inc.

## Planning Report

<b>Database:</b>	EDM_DENVER	<b>Local Co-ordinate Reference:</b>	Well Fox Creek 521-3403H
<b>Company:</b>	Denver Division- Colorado	<b>TVD Reference:</b>	RKB @ 5377.0usft (KB GL+25')
<b>Project:</b>	DJ - Hereford Ranch	<b>MD Reference:</b>	RKB @ 5377.0usft (KB GL+25')
<b>Site:</b>	Fox Creek F34 NENE Pad	<b>North Reference:</b>	True
<b>Well:</b>	Fox Creek 521-3403H	<b>Survey Calculation Method:</b>	Minimum Curvature
<b>Wellbore:</b>	OH		
<b>Design:</b>	APD (Plat Cert 4/30/15)		

<b>Project</b>	DJ - Hereford Ranch, Weld County		
<b>Map System:</b>	US State Plane 1927 (Exact solution)	<b>System Datum:</b>	Mean Sea Level
<b>Geo Datum:</b>	NAD 1927 (NADCON CONUS)		
<b>Map Zone:</b>	Colorado North 501		

<b>Site</b>	Fox Creek F34 NENE Pad		
<b>Site Position:</b>		<b>Northing:</b>	598,700.00 usft
<b>From:</b>	Map	<b>Easting:</b>	2,300,650.00 usft
<b>Position Uncertainty:</b>	0.0 usft	<b>Slot Radius:</b>	13-3/16 "
		<b>Latitude:</b>	40° 58' 18.312 N
		<b>Longitude:</b>	104° 24' 40.775 W
		<b>Grid Convergence:</b>	0.70 °

<b>Well</b>	Fox Creek 521-3403H		
<b>Well Position</b>	<b>+N/-S</b>	49.5 usft	<b>Northing:</b>
	<b>+E/-W</b>	-205.4 usft	<b>Easting:</b>
<b>Position Uncertainty</b>	0.0 usft		<b>Wellhead Elevation:</b>
			<b>Ground Level:</b>
			5,352.0 usft

<b>Wellbore</b>	OH		
<b>Magnetics</b>	<b>Model Name</b>	<b>Sample Date</b>	<b>Declination</b>
			(°)
	IGRF2015	6/8/2015	8.28
			<b>Dip Angle</b>
			(°)
			67.42
			<b>Field Strength</b>
			(nT)
			52,951

<b>Design</b>	APD (Plat Cert 4/30/15)		
<b>Audit Notes:</b>			
<b>Version:</b>	<b>Phase:</b>	PROTOTYPE	<b>Tie On Depth:</b>
			0.0
<b>Vertical Section:</b>	<b>Depth From (TVD)</b>	<b>+N/-S</b>	<b>+E/-W</b>
	(usft)	(usft)	(usft)
	0.0	0.0	0.0
			<b>Direction</b>
			(°)
			184.54

<b>Plan Sections</b>										
<b>Measured</b>	<b>Inclination</b>	<b>Azimuth</b>	<b>Vertical</b>	<b>+N/-S</b>	<b>+E/-W</b>	<b>Dogleg</b>	<b>Build</b>	<b>Turn</b>	<b>TFO</b>	<b>Target</b>
<b>Depth</b>	(°)	(°)	<b>Depth</b>	(usft)	(usft)	<b>Rate</b>	<b>Rate</b>	<b>Rate</b>	(°)	
(usft)			(usft)			(°/100usft)	(°/100usft)	(°/100usft)		
0.0	0.00	0.00	0.0	0.0	0.0	0.00	0.00	0.00	0.00	
7,135.5	0.00	0.00	7,135.5	0.0	0.0	0.00	0.00	0.00	0.00	
7,885.5	90.00	197.00	7,613.0	-456.6	-139.6	12.00	12.00	0.00	197.00	
9,705.5	90.00	197.00	7,613.0	-2,197.1	-671.7	0.00	0.00	0.00	0.00	
10,272.1	90.00	180.00	7,613.0	-2,755.4	-755.2	3.00	0.00	-3.00	-90.00	Fox Creek 521-3403H
17,020.5	90.00	180.00	7,613.0	-9,503.8	-755.5	0.00	0.00	0.00	0.00	Fox Creek 521-3403H

# EOG Resources, Inc.

## Planning Report

<b>Database:</b>	EDM_DENVER	<b>Local Co-ordinate Reference:</b>	Well Fox Creek 521-3403H
<b>Company:</b>	Denver Division- Colorado	<b>TVD Reference:</b>	RKB @ 5377.0usft (KB GL+25')
<b>Project:</b>	DJ - Hereford Ranch	<b>MD Reference:</b>	RKB @ 5377.0usft (KB GL+25')
<b>Site:</b>	Fox Creek F34 NENE Pad	<b>North Reference:</b>	True
<b>Well:</b>	Fox Creek 521-3403H	<b>Survey Calculation Method:</b>	Minimum Curvature
<b>Wellbore:</b>	OH		
<b>Design:</b>	APD (Plat Cert 4/30/15)		

Planned Survey									
Measured Depth (usft)	Inclination (°)	Azimuth (°)	Vertical Depth (usft)	+N/-S (usft)	+E/-W (usft)	Vertical Section (usft)	Dogleg Rate (°/100usft)	Build Rate (°/100usft)	Turn Rate (°/100usft)
0.0	0.00	0.00	0.0	0.0	0.0	0.0	0.00	0.00	0.00
100.0	0.00	0.00	100.0	0.0	0.0	0.0	0.00	0.00	0.00
200.0	0.00	0.00	200.0	0.0	0.0	0.0	0.00	0.00	0.00
300.0	0.00	0.00	300.0	0.0	0.0	0.0	0.00	0.00	0.00
400.0	0.00	0.00	400.0	0.0	0.0	0.0	0.00	0.00	0.00
500.0	0.00	0.00	500.0	0.0	0.0	0.0	0.00	0.00	0.00
600.0	0.00	0.00	600.0	0.0	0.0	0.0	0.00	0.00	0.00
700.0	0.00	0.00	700.0	0.0	0.0	0.0	0.00	0.00	0.00
800.0	0.00	0.00	800.0	0.0	0.0	0.0	0.00	0.00	0.00
900.0	0.00	0.00	900.0	0.0	0.0	0.0	0.00	0.00	0.00
1,000.0	0.00	0.00	1,000.0	0.0	0.0	0.0	0.00	0.00	0.00
1,100.0	0.00	0.00	1,100.0	0.0	0.0	0.0	0.00	0.00	0.00
1,200.0	0.00	0.00	1,200.0	0.0	0.0	0.0	0.00	0.00	0.00
1,300.0	0.00	0.00	1,300.0	0.0	0.0	0.0	0.00	0.00	0.00
1,353.0	0.00	0.00	1,353.0	0.0	0.0	0.0	0.00	0.00	0.00
9 5/8" Surface									
1,400.0	0.00	0.00	1,400.0	0.0	0.0	0.0	0.00	0.00	0.00
1,500.0	0.00	0.00	1,500.0	0.0	0.0	0.0	0.00	0.00	0.00
1,600.0	0.00	0.00	1,600.0	0.0	0.0	0.0	0.00	0.00	0.00
1,700.0	0.00	0.00	1,700.0	0.0	0.0	0.0	0.00	0.00	0.00
1,800.0	0.00	0.00	1,800.0	0.0	0.0	0.0	0.00	0.00	0.00
1,900.0	0.00	0.00	1,900.0	0.0	0.0	0.0	0.00	0.00	0.00
2,000.0	0.00	0.00	2,000.0	0.0	0.0	0.0	0.00	0.00	0.00
2,100.0	0.00	0.00	2,100.0	0.0	0.0	0.0	0.00	0.00	0.00
2,200.0	0.00	0.00	2,200.0	0.0	0.0	0.0	0.00	0.00	0.00
2,300.0	0.00	0.00	2,300.0	0.0	0.0	0.0	0.00	0.00	0.00
2,400.0	0.00	0.00	2,400.0	0.0	0.0	0.0	0.00	0.00	0.00
2,500.0	0.00	0.00	2,500.0	0.0	0.0	0.0	0.00	0.00	0.00
2,600.0	0.00	0.00	2,600.0	0.0	0.0	0.0	0.00	0.00	0.00
2,700.0	0.00	0.00	2,700.0	0.0	0.0	0.0	0.00	0.00	0.00
2,800.0	0.00	0.00	2,800.0	0.0	0.0	0.0	0.00	0.00	0.00
2,900.0	0.00	0.00	2,900.0	0.0	0.0	0.0	0.00	0.00	0.00
3,000.0	0.00	0.00	3,000.0	0.0	0.0	0.0	0.00	0.00	0.00
3,100.0	0.00	0.00	3,100.0	0.0	0.0	0.0	0.00	0.00	0.00
3,200.0	0.00	0.00	3,200.0	0.0	0.0	0.0	0.00	0.00	0.00
3,300.0	0.00	0.00	3,300.0	0.0	0.0	0.0	0.00	0.00	0.00
3,400.0	0.00	0.00	3,400.0	0.0	0.0	0.0	0.00	0.00	0.00
3,500.0	0.00	0.00	3,500.0	0.0	0.0	0.0	0.00	0.00	0.00
3,600.0	0.00	0.00	3,600.0	0.0	0.0	0.0	0.00	0.00	0.00
3,700.0	0.00	0.00	3,700.0	0.0	0.0	0.0	0.00	0.00	0.00
3,800.0	0.00	0.00	3,800.0	0.0	0.0	0.0	0.00	0.00	0.00
3,900.0	0.00	0.00	3,900.0	0.0	0.0	0.0	0.00	0.00	0.00
4,000.0	0.00	0.00	4,000.0	0.0	0.0	0.0	0.00	0.00	0.00
4,100.0	0.00	0.00	4,100.0	0.0	0.0	0.0	0.00	0.00	0.00
4,200.0	0.00	0.00	4,200.0	0.0	0.0	0.0	0.00	0.00	0.00
4,300.0	0.00	0.00	4,300.0	0.0	0.0	0.0	0.00	0.00	0.00
4,400.0	0.00	0.00	4,400.0	0.0	0.0	0.0	0.00	0.00	0.00
4,500.0	0.00	0.00	4,500.0	0.0	0.0	0.0	0.00	0.00	0.00
4,600.0	0.00	0.00	4,600.0	0.0	0.0	0.0	0.00	0.00	0.00
4,700.0	0.00	0.00	4,700.0	0.0	0.0	0.0	0.00	0.00	0.00
4,800.0	0.00	0.00	4,800.0	0.0	0.0	0.0	0.00	0.00	0.00
4,900.0	0.00	0.00	4,900.0	0.0	0.0	0.0	0.00	0.00	0.00
5,000.0	0.00	0.00	5,000.0	0.0	0.0	0.0	0.00	0.00	0.00
5,100.0	0.00	0.00	5,100.0	0.0	0.0	0.0	0.00	0.00	0.00

# EOG Resources, Inc.

## Planning Report

<b>Database:</b>	EDM_DENVER	<b>Local Co-ordinate Reference:</b>	Well Fox Creek 521-3403H
<b>Company:</b>	Denver Division- Colorado	<b>TVD Reference:</b>	RKB @ 5377.0usft (KB GL+25')
<b>Project:</b>	DJ - Hereford Ranch	<b>MD Reference:</b>	RKB @ 5377.0usft (KB GL+25')
<b>Site:</b>	Fox Creek F34 NENE Pad	<b>North Reference:</b>	True
<b>Well:</b>	Fox Creek 521-3403H	<b>Survey Calculation Method:</b>	Minimum Curvature
<b>Wellbore:</b>	OH		
<b>Design:</b>	APD (Plat Cert 4/30/15)		

Planned Survey									
Measured Depth (usft)	Inclination (°)	Azimuth (°)	Vertical Depth (usft)	+N/-S (usft)	+E/-W (usft)	Vertical Section (usft)	Dogleg Rate (°/100usft)	Build Rate (°/100usft)	Turn Rate (°/100usft)
5,200.0	0.00	0.00	5,200.0	0.0	0.0	0.0	0.00	0.00	0.00
5,300.0	0.00	0.00	5,300.0	0.0	0.0	0.0	0.00	0.00	0.00
5,400.0	0.00	0.00	5,400.0	0.0	0.0	0.0	0.00	0.00	0.00
5,500.0	0.00	0.00	5,500.0	0.0	0.0	0.0	0.00	0.00	0.00
5,600.0	0.00	0.00	5,600.0	0.0	0.0	0.0	0.00	0.00	0.00
5,700.0	0.00	0.00	5,700.0	0.0	0.0	0.0	0.00	0.00	0.00
5,800.0	0.00	0.00	5,800.0	0.0	0.0	0.0	0.00	0.00	0.00
5,900.0	0.00	0.00	5,900.0	0.0	0.0	0.0	0.00	0.00	0.00
6,000.0	0.00	0.00	6,000.0	0.0	0.0	0.0	0.00	0.00	0.00
6,100.0	0.00	0.00	6,100.0	0.0	0.0	0.0	0.00	0.00	0.00
6,200.0	0.00	0.00	6,200.0	0.0	0.0	0.0	0.00	0.00	0.00
6,300.0	0.00	0.00	6,300.0	0.0	0.0	0.0	0.00	0.00	0.00
6,400.0	0.00	0.00	6,400.0	0.0	0.0	0.0	0.00	0.00	0.00
6,500.0	0.00	0.00	6,500.0	0.0	0.0	0.0	0.00	0.00	0.00
6,600.0	0.00	0.00	6,600.0	0.0	0.0	0.0	0.00	0.00	0.00
6,700.0	0.00	0.00	6,700.0	0.0	0.0	0.0	0.00	0.00	0.00
6,800.0	0.00	0.00	6,800.0	0.0	0.0	0.0	0.00	0.00	0.00
6,900.0	0.00	0.00	6,900.0	0.0	0.0	0.0	0.00	0.00	0.00
7,000.0	0.00	0.00	7,000.0	0.0	0.0	0.0	0.00	0.00	0.00
7,100.0	0.00	0.00	7,100.0	0.0	0.0	0.0	0.00	0.00	0.00
7,135.5	0.00	0.00	7,135.5	0.0	0.0	0.0	0.00	0.00	0.00
7,200.0	7.74	197.00	7,199.8	-4.2	-1.3	4.2	12.00	12.00	0.00
7,300.0	19.74	197.00	7,296.8	-26.8	-8.2	27.4	12.00	12.00	0.00
7,400.0	31.74	197.00	7,386.7	-68.3	-20.9	69.7	12.00	12.00	0.00
7,500.0	43.74	197.00	7,465.6	-126.7	-38.7	129.4	12.00	12.00	0.00
7,600.0	55.74	197.00	7,530.1	-199.6	-61.0	203.8	12.00	12.00	0.00
7,700.0	67.74	197.00	7,577.4	-283.6	-86.7	289.6	12.00	12.00	0.00
7,800.0	79.74	197.00	7,605.3	-375.3	-114.7	383.2	12.00	12.00	0.00
7,885.0	89.94	197.00	7,613.0	-456.1	-139.5	465.7	12.00	12.00	0.00
7" Intermediate (Opt 2)									
7,885.5	90.00	197.00	7,613.0	-456.6	-139.6	466.2	12.00	12.00	0.00
7,900.0	90.00	197.00	7,613.0	-470.5	-143.8	480.4	0.00	0.00	0.00
8,000.0	90.00	197.00	7,613.0	-566.1	-173.1	578.0	0.00	0.00	0.00
8,100.0	90.00	197.00	7,613.0	-661.7	-202.3	675.7	0.00	0.00	0.00
8,200.0	90.00	197.00	7,613.0	-757.4	-231.5	773.3	0.00	0.00	0.00
8,300.0	90.00	197.00	7,613.0	-853.0	-260.8	871.0	0.00	0.00	0.00
8,400.0	90.00	197.00	7,613.0	-948.6	-290.0	968.6	0.00	0.00	0.00
8,500.0	90.00	197.00	7,613.0	-1,044.3	-319.3	1,066.3	0.00	0.00	0.00
8,600.0	90.00	197.00	7,613.0	-1,139.9	-348.5	1,163.9	0.00	0.00	0.00
8,700.0	90.00	197.00	7,613.0	-1,235.5	-377.7	1,261.6	0.00	0.00	0.00
8,800.0	90.00	197.00	7,613.0	-1,331.1	-407.0	1,359.2	0.00	0.00	0.00
8,900.0	90.00	197.00	7,613.0	-1,426.8	-436.2	1,456.9	0.00	0.00	0.00
9,000.0	90.00	197.00	7,613.0	-1,522.4	-465.4	1,554.5	0.00	0.00	0.00
9,100.0	90.00	197.00	7,613.0	-1,618.0	-494.7	1,652.1	0.00	0.00	0.00
9,200.0	90.00	197.00	7,613.0	-1,713.7	-523.9	1,749.8	0.00	0.00	0.00
9,300.0	90.00	197.00	7,613.0	-1,809.3	-553.2	1,847.4	0.00	0.00	0.00
9,400.0	90.00	197.00	7,613.0	-1,904.9	-582.4	1,945.1	0.00	0.00	0.00
9,500.0	90.00	197.00	7,613.0	-2,000.6	-611.6	2,042.7	0.00	0.00	0.00
9,600.0	90.00	197.00	7,613.0	-2,096.2	-640.9	2,140.4	0.00	0.00	0.00
9,700.0	90.00	197.00	7,613.0	-2,191.8	-670.1	2,238.0	0.00	0.00	0.00
9,705.5	90.00	197.00	7,613.0	-2,197.1	-671.7	2,243.4	0.00	0.00	0.00
9,800.0	90.00	194.17	7,613.0	-2,288.1	-697.1	2,336.1	3.00	0.00	-3.00
9,900.0	90.00	191.17	7,613.0	-2,385.6	-719.0	2,435.1	3.00	0.00	-3.00

# EOG Resources, Inc.

## Planning Report

<b>Database:</b>	EDM_DENVER	<b>Local Co-ordinate Reference:</b>	Well Fox Creek 521-3403H
<b>Company:</b>	Denver Division- Colorado	<b>TVD Reference:</b>	RKB @ 5377.0usft (KB GL+25')
<b>Project:</b>	DJ - Hereford Ranch	<b>MD Reference:</b>	RKB @ 5377.0usft (KB GL+25')
<b>Site:</b>	Fox Creek F34 NENE Pad	<b>North Reference:</b>	True
<b>Well:</b>	Fox Creek 521-3403H	<b>Survey Calculation Method:</b>	Minimum Curvature
<b>Wellbore:</b>	OH		
<b>Design:</b>	APD (Plat Cert 4/30/15)		

Planned Survey									
Measured Depth (usft)	Inclination (°)	Azimuth (°)	Vertical Depth (usft)	+N/-S (usft)	+E/-W (usft)	Vertical Section (usft)	Dogleg Rate (°/100usft)	Build Rate (°/100usft)	Turn Rate (°/100usft)
10,000.0	90.00	188.17	7,613.0	-2,484.2	-735.8	2,534.7	3.00	0.00	-3.00
10,100.0	90.00	185.17	7,613.0	-2,583.5	-747.4	2,634.6	3.00	0.00	-3.00
10,200.0	90.00	182.17	7,613.0	-2,683.3	-753.8	2,734.6	3.00	0.00	-3.00
10,272.1	90.00	180.00	7,613.0	-2,755.4	-755.2	2,806.6	3.00	0.00	-3.00
10,300.0	90.00	180.00	7,613.0	-2,783.3	-755.2	2,834.4	0.00	0.00	0.00
10,400.0	90.00	180.00	7,613.0	-2,883.3	-755.2	2,934.1	0.00	0.00	0.00
10,500.0	90.00	180.00	7,613.0	-2,983.3	-755.2	3,033.8	0.00	0.00	0.00
10,600.0	90.00	180.00	7,613.0	-3,083.3	-755.2	3,133.4	0.00	0.00	0.00
10,700.0	90.00	180.00	7,613.0	-3,183.3	-755.2	3,233.1	0.00	0.00	0.00
10,800.0	90.00	180.00	7,613.0	-3,283.3	-755.2	3,332.8	0.00	0.00	0.00
10,900.0	90.00	180.00	7,613.0	-3,383.3	-755.2	3,432.5	0.00	0.00	0.00
11,000.0	90.00	180.00	7,613.0	-3,483.3	-755.2	3,532.2	0.00	0.00	0.00
11,100.0	90.00	180.00	7,613.0	-3,583.3	-755.2	3,631.9	0.00	0.00	0.00
11,200.0	90.00	180.00	7,613.0	-3,683.3	-755.2	3,731.6	0.00	0.00	0.00
11,300.0	90.00	180.00	7,613.0	-3,783.3	-755.2	3,831.2	0.00	0.00	0.00
11,400.0	90.00	180.00	7,613.0	-3,883.3	-755.2	3,930.9	0.00	0.00	0.00
11,500.0	90.00	180.00	7,613.0	-3,983.3	-755.2	4,030.6	0.00	0.00	0.00
11,600.0	90.00	180.00	7,613.0	-4,083.3	-755.2	4,130.3	0.00	0.00	0.00
11,700.0	90.00	180.00	7,613.0	-4,183.3	-755.2	4,230.0	0.00	0.00	0.00
11,800.0	90.00	180.00	7,613.0	-4,283.3	-755.2	4,329.7	0.00	0.00	0.00
11,900.0	90.00	180.00	7,613.0	-4,383.3	-755.2	4,429.4	0.00	0.00	0.00
12,000.0	90.00	180.00	7,613.0	-4,483.3	-755.2	4,529.0	0.00	0.00	0.00
12,100.0	90.00	180.00	7,613.0	-4,583.3	-755.2	4,628.7	0.00	0.00	0.00
12,200.0	90.00	180.00	7,613.0	-4,683.3	-755.3	4,728.4	0.00	0.00	0.00
12,300.0	90.00	180.00	7,613.0	-4,783.3	-755.3	4,828.1	0.00	0.00	0.00
12,400.0	90.00	180.00	7,613.0	-4,883.3	-755.3	4,927.8	0.00	0.00	0.00
12,500.0	90.00	180.00	7,613.0	-4,983.3	-755.3	5,027.5	0.00	0.00	0.00
12,600.0	90.00	180.00	7,613.0	-5,083.3	-755.3	5,127.2	0.00	0.00	0.00
12,700.0	90.00	180.00	7,613.0	-5,183.3	-755.3	5,226.8	0.00	0.00	0.00
12,800.0	90.00	180.00	7,613.0	-5,283.3	-755.3	5,326.5	0.00	0.00	0.00
12,900.0	90.00	180.00	7,613.0	-5,383.3	-755.3	5,426.2	0.00	0.00	0.00
13,000.0	90.00	180.00	7,613.0	-5,483.3	-755.3	5,525.9	0.00	0.00	0.00
13,100.0	90.00	180.00	7,613.0	-5,583.3	-755.3	5,625.6	0.00	0.00	0.00
13,200.0	90.00	180.00	7,613.0	-5,683.3	-755.3	5,725.3	0.00	0.00	0.00
13,300.0	90.00	180.00	7,613.0	-5,783.3	-755.3	5,825.0	0.00	0.00	0.00
13,400.0	90.00	180.00	7,613.0	-5,883.3	-755.3	5,924.6	0.00	0.00	0.00
13,500.0	90.00	180.00	7,613.0	-5,983.3	-755.3	6,024.3	0.00	0.00	0.00
13,600.0	90.00	180.00	7,613.0	-6,083.3	-755.3	6,124.0	0.00	0.00	0.00
13,700.0	90.00	180.00	7,613.0	-6,183.3	-755.3	6,223.7	0.00	0.00	0.00
13,800.0	90.00	180.00	7,613.0	-6,283.3	-755.3	6,323.4	0.00	0.00	0.00
13,900.0	90.00	180.00	7,613.0	-6,383.3	-755.3	6,423.1	0.00	0.00	0.00
14,000.0	90.00	180.00	7,613.0	-6,483.3	-755.3	6,522.8	0.00	0.00	0.00
14,100.0	90.00	180.00	7,613.0	-6,583.3	-755.3	6,622.4	0.00	0.00	0.00
14,200.0	90.00	180.00	7,613.0	-6,683.3	-755.3	6,722.1	0.00	0.00	0.00
14,300.0	90.00	180.00	7,613.0	-6,783.3	-755.3	6,821.8	0.00	0.00	0.00
14,400.0	90.00	180.00	7,613.0	-6,883.3	-755.3	6,921.5	0.00	0.00	0.00
14,500.0	90.00	180.00	7,613.0	-6,983.3	-755.4	7,021.2	0.00	0.00	0.00
14,600.0	90.00	180.00	7,613.0	-7,083.3	-755.4	7,120.9	0.00	0.00	0.00
14,700.0	90.00	180.00	7,613.0	-7,183.3	-755.4	7,220.6	0.00	0.00	0.00
14,800.0	90.00	180.00	7,613.0	-7,283.3	-755.4	7,320.3	0.00	0.00	0.00
14,900.0	90.00	180.00	7,613.0	-7,383.3	-755.4	7,419.9	0.00	0.00	0.00
15,000.0	90.00	180.00	7,613.0	-7,483.3	-755.4	7,519.6	0.00	0.00	0.00
15,100.0	90.00	180.00	7,613.0	-7,583.3	-755.4	7,619.3	0.00	0.00	0.00
15,200.0	90.00	180.00	7,613.0	-7,683.3	-755.4	7,719.0	0.00	0.00	0.00

# EOG Resources, Inc.

## Planning Report

<b>Database:</b>	EDM_DENVER	<b>Local Co-ordinate Reference:</b>	Well Fox Creek 521-3403H
<b>Company:</b>	Denver Division- Colorado	<b>TVD Reference:</b>	RKB @ 5377.0usft (KB GL+25')
<b>Project:</b>	DJ - Hereford Ranch	<b>MD Reference:</b>	RKB @ 5377.0usft (KB GL+25')
<b>Site:</b>	Fox Creek F34 NENE Pad	<b>North Reference:</b>	True
<b>Well:</b>	Fox Creek 521-3403H	<b>Survey Calculation Method:</b>	Minimum Curvature
<b>Wellbore:</b>	OH		
<b>Design:</b>	APD (Plat Cert 4/30/15)		

Planned Survey										
Measured Depth (usft)	Inclination (°)	Azimuth (°)	Vertical Depth (usft)	+N/-S (usft)	+E/-W (usft)	Vertical Section (usft)	Dogleg Rate (°/100usft)	Build Rate (°/100usft)	Turn Rate (°/100usft)	
15,300.0	90.00	180.00	7,613.0	-7,783.3	-755.4	7,818.7	0.00	0.00	0.00	
15,400.0	90.00	180.00	7,613.0	-7,883.3	-755.4	7,918.4	0.00	0.00	0.00	
15,500.0	90.00	180.00	7,613.0	-7,983.3	-755.4	8,018.1	0.00	0.00	0.00	
15,600.0	90.00	180.00	7,613.0	-8,083.3	-755.4	8,117.7	0.00	0.00	0.00	
15,700.0	90.00	180.00	7,613.0	-8,183.3	-755.4	8,217.4	0.00	0.00	0.00	
15,800.0	90.00	180.00	7,613.0	-8,283.3	-755.4	8,317.1	0.00	0.00	0.00	
15,900.0	90.00	180.00	7,613.0	-8,383.3	-755.4	8,416.8	0.00	0.00	0.00	
16,000.0	90.00	180.00	7,613.0	-8,483.3	-755.4	8,516.5	0.00	0.00	0.00	
16,100.0	90.00	180.00	7,613.0	-8,583.3	-755.4	8,616.2	0.00	0.00	0.00	
16,200.0	90.00	180.00	7,613.0	-8,683.3	-755.4	8,715.9	0.00	0.00	0.00	
16,300.0	90.00	180.00	7,613.0	-8,783.3	-755.4	8,815.5	0.00	0.00	0.00	
16,400.0	90.00	180.00	7,613.0	-8,883.3	-755.4	8,915.2	0.00	0.00	0.00	
16,500.0	90.00	180.00	7,613.0	-8,983.3	-755.4	9,014.9	0.00	0.00	0.00	
16,600.0	90.00	180.00	7,613.0	-9,083.3	-755.4	9,114.6	0.00	0.00	0.00	
16,700.0	90.00	180.00	7,613.0	-9,183.3	-755.4	9,214.3	0.00	0.00	0.00	
16,800.0	90.00	180.00	7,613.0	-9,283.3	-755.5	9,314.0	0.00	0.00	0.00	
16,900.0	90.00	180.00	7,613.0	-9,383.3	-755.5	9,413.7	0.00	0.00	0.00	
17,000.0	90.00	180.00	7,613.0	-9,483.3	-755.5	9,513.3	0.00	0.00	0.00	
17,020.5	90.00	180.00	7,613.0	-9,503.8	-755.5	9,533.8	0.00	0.00	0.00	
5 1/2" Prod (Opt 1) - 4 1/2" Liner (Opt 2)										

Design Targets										
Target Name	Dip Angle (°)	Dip Dir. (°)	TVD (usft)	+N/-S (usft)	+E/-W (usft)	Northing (usft)	Easting (usft)	Latitude	Longitude	
- hit/miss target										
- Shape										
Fox Creek 521-3403H P	0.00	0.00	7,613.0	-9,503.8	-755.5	589,234.60	2,299,805.17	40° 56' 44.898 N	104° 24' 53.297 W	
- plan misses target center by 0.1usft at 17020.5usft MD (7613.0 TVD, -9503.8 N, -755.5 E)										
- Point										

Casing Points					
Measured Depth (usft)	Vertical Depth (usft)	Name	Casing Diameter (")	Hole Diameter (")	
1,353.0	1,353.0	9 5/8" Surface	9-5/8	13-1/2	
7,885.0	7,613.0	7" Intermediate (Opt 2)	7	8-3/4	
17,020.5	7,613.0	5 1/2" Prod (Opt 1)	5-1/2	7-7/8	
17,020.5	7,613.0	4 1/2" Liner (Opt 2)	4-1/2	6-1/8	