

1801 Broadway  
Suite 500  
Denver, Colorado 80202



Allison Linz  
Regulatory Technician  
Tel: 303.398.0355  
E-mail: alinz@gwogco.com

August 11, 2015

Colorado Oil and Gas Conservation Commission  
1120 Lincoln Street, Suite 801  
Denver, Colorado 80203

RE: **Proposed Wellbore Spacing Unit**  
Leffler FE 20-062HC

Codell New Drill  
Township 6 North, Range 66 West, 6<sup>th</sup> P.M.  
NENE Section 21  
Weld County, Colorado

Dear Director:

Great Western Operating Company, LLC is planning to drill the above captioned well in accordance with the provisions of COGCC Rule 318A.e.

Great Western proposed wellbore spacing unit consists of:

- **N2 Sec 20, N2 Sec 21**
- **640 Acres**

The 30 day notification time period has passed and we have not received any objections to such well locations or proposed spacing unit, therefore Great Western hereby requests the Director to approve the above mentioned well. Great Western Operating Company, LLC respectfully requests that the COGCC review the enclosed map illustrating the proposed wellbore spacing unit.

Respectfully,

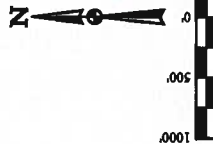
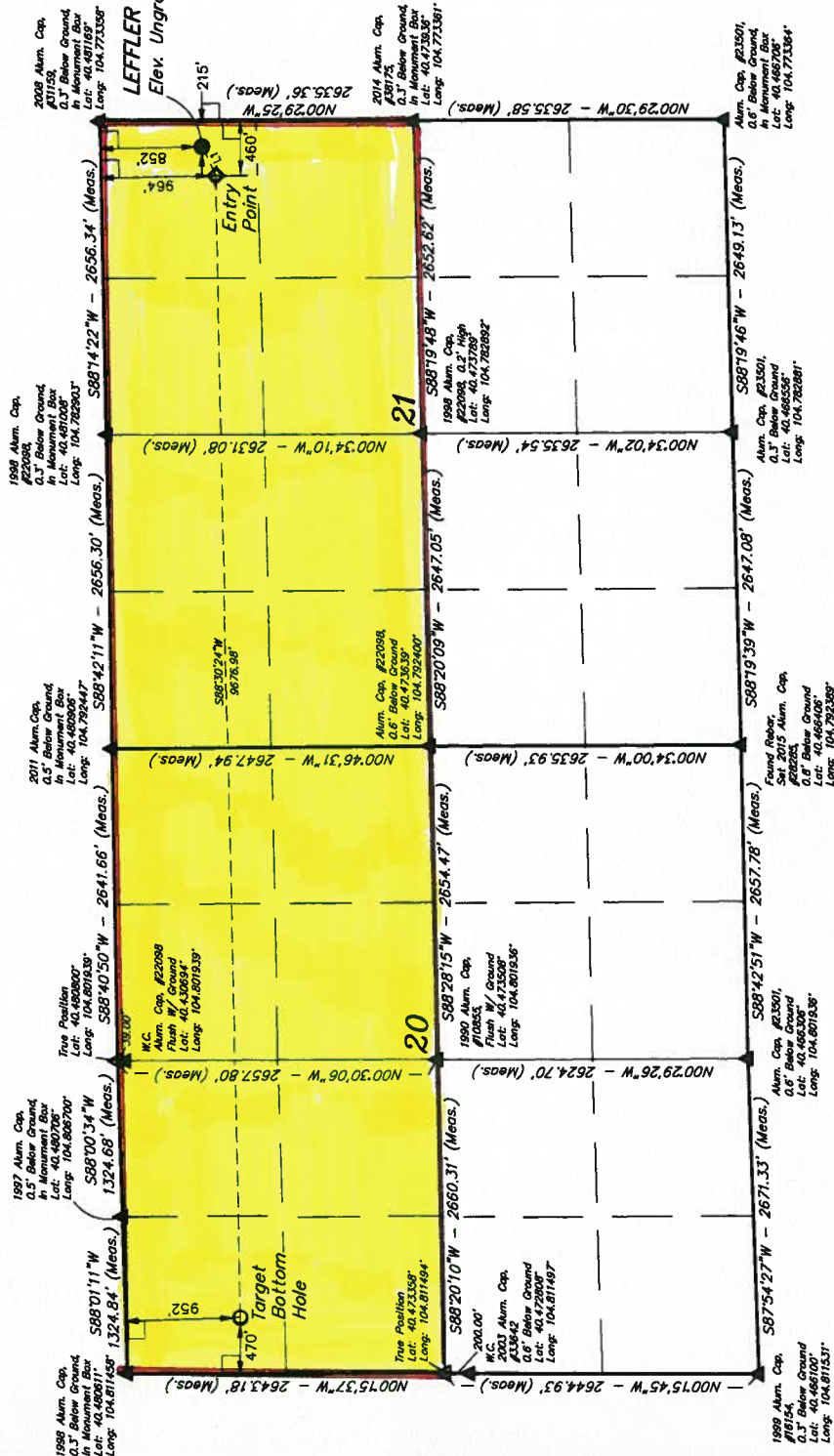
*Allison Linz*

Allison Linz  
Regulatory Technician  
Great Western Operating Company, LLC

T6N, R66W, 6th P.M.

GREAT WESTERN OIL & GAS COMPANY  
LEFFLER FE 20-062HC  
NE 1/4 NE 1/4, SECTION 21, T6N, R66W, 6th P.M.  
WELD COUNTY, COLORADO

BASIS OF BEARINGS  
BASIS OF ELEVATION  
USGS COOPERATIVE BASE NETWORK CONTROL STATION,  
DESIGNATION "VERMILYEA" - NGS DATA SHEET LISTS THE  
NAVD 88 ELEVATION AS BEING 5026 FEET.



CERTIFICATE OF RECORD  
THIS IS TO CERTIFY THAT THE ABOVE SURVEY WAS MADE BY THE SURVEYOR AND THAT THE SAME ARE TRUE AND CORRECT TO THE BEST OF HIS KNOWLEDGE AND BELIEF.  
SURVEYED BY: DALLAS NIELSEN, B.C.  
DATE: 04-21-15  
DRAWN BY: K.B.  
DATE DRAWN: 04-23-15  
SCALE: 1" = 100'

LEGEND:  
 = 90° SYMBOL  
 = PROPOSED WELLSHEAD  
 = TARGET BOTTOM HOLE  
 = SECTION CORNERS LOCATED  
 = ENTRY POINT  
 = SECTION CORNERS RE-ESTABLISHED.  
 (Not Set on Ground)

DPDP = L3

| NAD 83 (TARGET BOTTOM HOLE)   | NAD 83 (ENTRY POINT)  | NAD 83 (SURFACE LOCATION)   |
|---|---|---|
| LATITUDE = 40°28'40.91" (40.478031)<br>LONGITUDE = 104°46'51.21" (104.807781) | LATITUDE = 40°28'42.58" (40.478494)<br>LONGITUDE = 104°46'50.05" (104.775014) | LATITUDE = 40°28'43.74" (40.478817)<br>LONGITUDE = 104°46'50.85" (104.774133) |
| LATITUDE = 40°28'40.98" (40.478050)<br>LONGITUDE = 104°46'51.32" (104.807926) | LATITUDE = 40°28'42.55" (40.478314)<br>LONGITUDE = 104°46'52.16" (104.774899) | LATITUDE = 40°28'43.81" (40.478836)<br>LONGITUDE = 104°46'52.99" (104.775058) |

UNITHAH  
SURVEYING & LAND SURVEYING  
 URLS, LLC  
 Corporate Office: 25 South 200 East  
 Vernal, UT 84078 • (435) 789-1817  
 SURVEYED BY: DALLAS NIELSEN, B.C.  
 DATE: 04-21-15  
 DRAWN BY: K.B.  
 DATE DRAWN: 04-23-15  
 SCALE: 1" = 100'  
 WELL LOCATION PLAN