

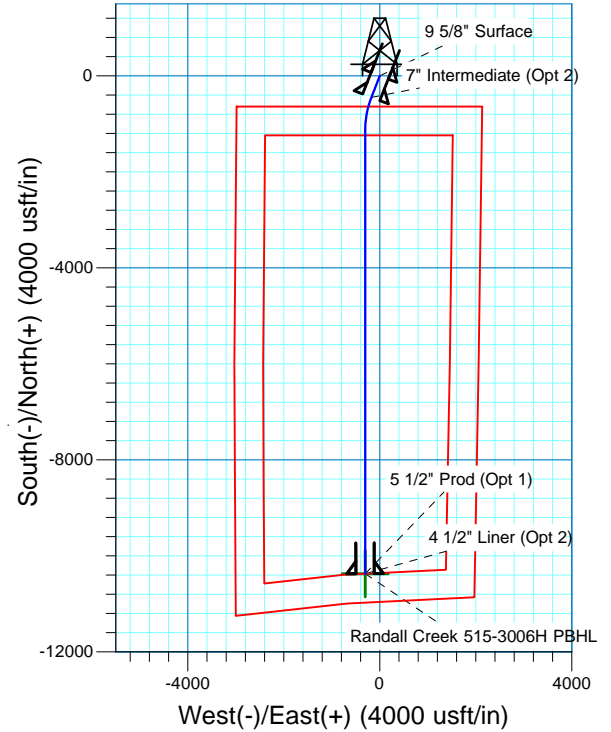
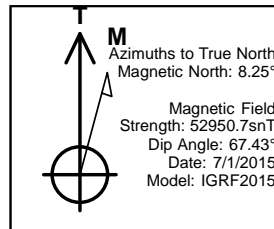
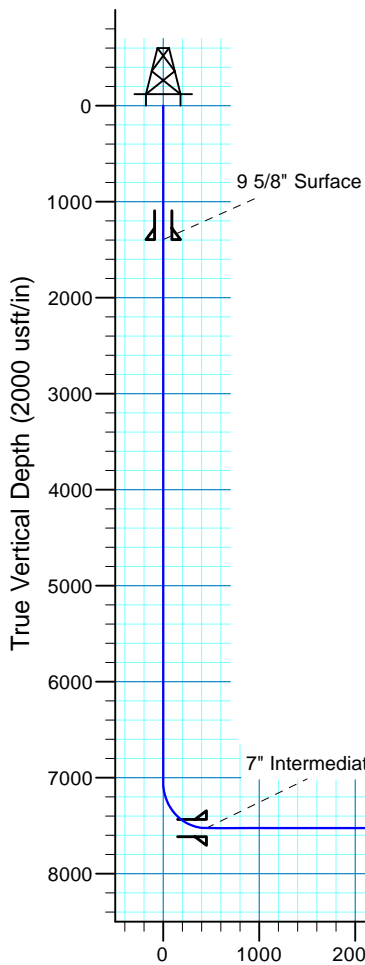


**Randall Creek 515-3006H**  
Section 30-T12N-R62W  
Weld County, CO

#### Surface Location

NAD 1927 (NADCON CONUS) Colorado North 501  
Ground Elevation: 5375.0 RKB @ 5400.0usft (KB GL+25')  
Northing Easting Latitude Longitude  
600100.00 2314700.00 40° 58' 30.399 N 104° 21' 37.407 W

Project: DJ - Hereford Ranch  
Site: Randall Creek R30 SWSE  
Well: Randall Creek 515-3006H  
Plan: APD Plan (Plat Cert 5/19/15)



Vertical Section at 181.67° (2000 usft/in)

#### SECTION DETAILS

Sec	MD	Inc	Azi	TVD	+N/-S	+E/-W	Dleg	TFace	Vsect	Target
1	0.0	0.00	0.00	0.0	0.0	0.0	0.00	0.00	0.0	
2	7049.5	0.00	0.00	7049.5	0.0	0.0	0.00	0.00	0.0	
3	7799.5	90.00	201.25	7527.0	-445.0	-173.1	12.00	201.25	449.9	
4	8507.9	90.00	180.00	7527.0	-1137.3	-302.9	3.00	-90.00	1145.6	Randall Creek 515-3006H PBHL
5	17740.9	90.00	180.00	7527.0	-10370.3	-302.5	0.00	0.00	10374.7	Randall Creek 515-3006H PBHL

#### TARGET DETAILS

Name	TVD	+N/-S	+E/-W	Northing	Easting	Latitude	Longitude	Shape Point
Randall Creek 515-3006H PBHL	7527.0	-10370.3	-302.5	589726.67	2314530.76	40° 56' 47.935 N	104° 21' 41.349 W	

# **Denver Division- Colorado**

**DJ - Hereford Ranch  
Randall Creek R30 SWSE  
Randall Creek 515-3006H**

**OH**

**Plan: APD Plan (Plat Cert 5/19/15)**

## **Standard Planning Report**

**01 July, 2015**

# EOG Resources, Inc.

## Planning Report

<b>Database:</b>	EDM_DENVER	<b>Local Co-ordinate Reference:</b>	Well Randall Creek 515-3006H
<b>Company:</b>	Denver Division- Colorado	<b>TVD Reference:</b>	RKB @ 5400.0usft (KB GL+25')
<b>Project:</b>	DJ - Hereford Ranch	<b>MD Reference:</b>	RKB @ 5400.0usft (KB GL+25')
<b>Site:</b>	Randall Creek R30 SWSE	<b>North Reference:</b>	True
<b>Well:</b>	Randall Creek 515-3006H	<b>Survey Calculation Method:</b>	Minimum Curvature
<b>Wellbore:</b>	OH		
<b>Design:</b>	APD Plan (Plat Cert 5/19/15)		

<b>Project</b>	DJ - Hereford Ranch, Weld County		
<b>Map System:</b>	US State Plane 1927 (Exact solution)	<b>System Datum:</b>	Mean Sea Level
<b>Geo Datum:</b>	NAD 1927 (NADCON CONUS)		
<b>Map Zone:</b>	Colorado North 501		

<b>Site</b>	Randall Creek R30 SWSE		
<b>Site Position:</b>		<b>Northing:</b>	600,100.00 usft
<b>From:</b>	Map	<b>Easting:</b>	2,314,700.00 usft
<b>Position Uncertainty:</b>	0.0 usft	<b>Slot Radius:</b>	13-3/16 "
		<b>Latitude:</b>	40° 58' 30.399 N
		<b>Longitude:</b>	104° 21' 37.407 W
		<b>Grid Convergence:</b>	0.74 °

<b>Well</b>	Randall Creek 515-3006H		
<b>Well Position</b>	<b>+N/-S</b>	0.0 usft	<b>Northing:</b>
	<b>+E/-W</b>	0.0 usft	<b>Easting:</b>
<b>Position Uncertainty</b>	0.0 usft	<b>Wellhead Elevation:</b>	0.0 usft
		<b>Latitude:</b>	40° 58' 30.399 N
		<b>Longitude:</b>	104° 21' 37.407 W
		<b>Ground Level:</b>	5,375.0 usft

<b>Wellbore</b>	OH				
<b>Magnetics</b>	<b>Model Name</b>	<b>Sample Date</b>	<b>Declination (°)</b>	<b>Dip Angle (°)</b>	<b>Field Strength (nT)</b>
	IGRF2015	7/1/2015	8.25	67.43	52,951

<b>Design</b>	APD Plan (Plat Cert 5/19/15)			
<b>Audit Notes:</b>				
<b>Version:</b>	<b>Phase:</b>	PROTOTYPE	<b>Tie On Depth:</b>	0.0
<b>Vertical Section:</b>	<b>Depth From (TVD) (usft)</b>	<b>+N/-S (usft)</b>	<b>+E/-W (usft)</b>	<b>Direction (°)</b>
	0.0	0.0	0.0	181.67

<b>Plan Sections</b>										
Measured Depth (usft)	Inclination (°)	Azimuth (°)	Vertical Depth (usft)	+N/-S (usft)	+E/-W (usft)	Dogleg Rate (°/100usft)	Build Rate (°/100usft)	Turn Rate (°/100usft)	TFO (°)	Target
0.0	0.00	0.00	0.0	0.0	0.0	0.00	0.00	0.00	0.00	
7,049.5	0.00	0.00	7,049.5	0.0	0.0	0.00	0.00	0.00	0.00	
7,799.5	90.00	201.25	7,527.0	-445.0	-173.1	12.00	12.00	0.00	201.25	
8,507.9	90.00	180.00	7,527.0	-1,137.3	-302.9	3.00	0.00	-3.00	-90.00	Randall Creek 515-3C
17,740.9	90.00	180.00	7,527.0	-10,370.3	-302.5	0.00	0.00	0.00	0.00	Randall Creek 515-3C

# EOG Resources, Inc.

## Planning Report

<b>Database:</b>	EDM_DENVER	<b>Local Co-ordinate Reference:</b>	Well Randall Creek 515-3006H
<b>Company:</b>	Denver Division- Colorado	<b>TVD Reference:</b>	RKB @ 5400.0usft (KB GL+25')
<b>Project:</b>	DJ - Hereford Ranch	<b>MD Reference:</b>	RKB @ 5400.0usft (KB GL+25')
<b>Site:</b>	Randall Creek R30 SWSE	<b>North Reference:</b>	True
<b>Well:</b>	Randall Creek 515-3006H	<b>Survey Calculation Method:</b>	Minimum Curvature
<b>Wellbore:</b>	OH		
<b>Design:</b>	APD Plan (Plat Cert 5/19/15)		

Planned Survey									
Measured Depth (usft)	Inclination (°)	Azimuth (°)	Vertical Depth (usft)	+N/-S (usft)	+E/-W (usft)	Vertical Section (usft)	Dogleg Rate (°/100usft)	Build Rate (°/100usft)	Turn Rate (°/100usft)
0.0	0.00	0.00	0.0	0.0	0.0	0.0	0.00	0.00	0.00
100.0	0.00	0.00	100.0	0.0	0.0	0.0	0.00	0.00	0.00
200.0	0.00	0.00	200.0	0.0	0.0	0.0	0.00	0.00	0.00
300.0	0.00	0.00	300.0	0.0	0.0	0.0	0.00	0.00	0.00
400.0	0.00	0.00	400.0	0.0	0.0	0.0	0.00	0.00	0.00
500.0	0.00	0.00	500.0	0.0	0.0	0.0	0.00	0.00	0.00
600.0	0.00	0.00	600.0	0.0	0.0	0.0	0.00	0.00	0.00
700.0	0.00	0.00	700.0	0.0	0.0	0.0	0.00	0.00	0.00
800.0	0.00	0.00	800.0	0.0	0.0	0.0	0.00	0.00	0.00
900.0	0.00	0.00	900.0	0.0	0.0	0.0	0.00	0.00	0.00
1,000.0	0.00	0.00	1,000.0	0.0	0.0	0.0	0.00	0.00	0.00
1,100.0	0.00	0.00	1,100.0	0.0	0.0	0.0	0.00	0.00	0.00
1,200.0	0.00	0.00	1,200.0	0.0	0.0	0.0	0.00	0.00	0.00
1,300.0	0.00	0.00	1,300.0	0.0	0.0	0.0	0.00	0.00	0.00
1,396.0	0.00	0.00	1,396.0	0.0	0.0	0.0	0.00	0.00	0.00
9 5/8" Surface									
1,400.0	0.00	0.00	1,400.0	0.0	0.0	0.0	0.00	0.00	0.00
1,500.0	0.00	0.00	1,500.0	0.0	0.0	0.0	0.00	0.00	0.00
1,600.0	0.00	0.00	1,600.0	0.0	0.0	0.0	0.00	0.00	0.00
1,700.0	0.00	0.00	1,700.0	0.0	0.0	0.0	0.00	0.00	0.00
1,800.0	0.00	0.00	1,800.0	0.0	0.0	0.0	0.00	0.00	0.00
1,900.0	0.00	0.00	1,900.0	0.0	0.0	0.0	0.00	0.00	0.00
2,000.0	0.00	0.00	2,000.0	0.0	0.0	0.0	0.00	0.00	0.00
2,100.0	0.00	0.00	2,100.0	0.0	0.0	0.0	0.00	0.00	0.00
2,200.0	0.00	0.00	2,200.0	0.0	0.0	0.0	0.00	0.00	0.00
2,300.0	0.00	0.00	2,300.0	0.0	0.0	0.0	0.00	0.00	0.00
2,400.0	0.00	0.00	2,400.0	0.0	0.0	0.0	0.00	0.00	0.00
2,500.0	0.00	0.00	2,500.0	0.0	0.0	0.0	0.00	0.00	0.00
2,600.0	0.00	0.00	2,600.0	0.0	0.0	0.0	0.00	0.00	0.00
2,700.0	0.00	0.00	2,700.0	0.0	0.0	0.0	0.00	0.00	0.00
2,800.0	0.00	0.00	2,800.0	0.0	0.0	0.0	0.00	0.00	0.00
2,900.0	0.00	0.00	2,900.0	0.0	0.0	0.0	0.00	0.00	0.00
3,000.0	0.00	0.00	3,000.0	0.0	0.0	0.0	0.00	0.00	0.00
3,100.0	0.00	0.00	3,100.0	0.0	0.0	0.0	0.00	0.00	0.00
3,200.0	0.00	0.00	3,200.0	0.0	0.0	0.0	0.00	0.00	0.00
3,300.0	0.00	0.00	3,300.0	0.0	0.0	0.0	0.00	0.00	0.00
3,400.0	0.00	0.00	3,400.0	0.0	0.0	0.0	0.00	0.00	0.00
3,500.0	0.00	0.00	3,500.0	0.0	0.0	0.0	0.00	0.00	0.00
3,600.0	0.00	0.00	3,600.0	0.0	0.0	0.0	0.00	0.00	0.00
3,700.0	0.00	0.00	3,700.0	0.0	0.0	0.0	0.00	0.00	0.00
3,800.0	0.00	0.00	3,800.0	0.0	0.0	0.0	0.00	0.00	0.00
3,900.0	0.00	0.00	3,900.0	0.0	0.0	0.0	0.00	0.00	0.00
4,000.0	0.00	0.00	4,000.0	0.0	0.0	0.0	0.00	0.00	0.00
4,100.0	0.00	0.00	4,100.0	0.0	0.0	0.0	0.00	0.00	0.00
4,200.0	0.00	0.00	4,200.0	0.0	0.0	0.0	0.00	0.00	0.00
4,300.0	0.00	0.00	4,300.0	0.0	0.0	0.0	0.00	0.00	0.00
4,400.0	0.00	0.00	4,400.0	0.0	0.0	0.0	0.00	0.00	0.00
4,500.0	0.00	0.00	4,500.0	0.0	0.0	0.0	0.00	0.00	0.00
4,600.0	0.00	0.00	4,600.0	0.0	0.0	0.0	0.00	0.00	0.00
4,700.0	0.00	0.00	4,700.0	0.0	0.0	0.0	0.00	0.00	0.00
4,800.0	0.00	0.00	4,800.0	0.0	0.0	0.0	0.00	0.00	0.00
4,900.0	0.00	0.00	4,900.0	0.0	0.0	0.0	0.00	0.00	0.00
5,000.0	0.00	0.00	5,000.0	0.0	0.0	0.0	0.00	0.00	0.00
5,100.0	0.00	0.00	5,100.0	0.0	0.0	0.0	0.00	0.00	0.00

# EOG Resources, Inc.

## Planning Report

<b>Database:</b>	EDM_DENVER	<b>Local Co-ordinate Reference:</b>	Well Randall Creek 515-3006H
<b>Company:</b>	Denver Division- Colorado	<b>TVD Reference:</b>	RKB @ 5400.0usft (KB GL+25')
<b>Project:</b>	DJ - Hereford Ranch	<b>MD Reference:</b>	RKB @ 5400.0usft (KB GL+25')
<b>Site:</b>	Randall Creek R30 SWSE	<b>North Reference:</b>	True
<b>Well:</b>	Randall Creek 515-3006H	<b>Survey Calculation Method:</b>	Minimum Curvature
<b>Wellbore:</b>	OH		
<b>Design:</b>	APD Plan (Plat Cert 5/19/15)		

Planned Survey									
Measured Depth (usft)	Inclination (°)	Azimuth (°)	Vertical Depth (usft)	+N/-S (usft)	+E/-W (usft)	Vertical Section (usft)	Dogleg Rate (°/100usft)	Build Rate (°/100usft)	Turn Rate (°/100usft)
5,200.0	0.00	0.00	5,200.0	0.0	0.0	0.0	0.00	0.00	0.00
5,300.0	0.00	0.00	5,300.0	0.0	0.0	0.0	0.00	0.00	0.00
5,400.0	0.00	0.00	5,400.0	0.0	0.0	0.0	0.00	0.00	0.00
5,500.0	0.00	0.00	5,500.0	0.0	0.0	0.0	0.00	0.00	0.00
5,600.0	0.00	0.00	5,600.0	0.0	0.0	0.0	0.00	0.00	0.00
5,700.0	0.00	0.00	5,700.0	0.0	0.0	0.0	0.00	0.00	0.00
5,800.0	0.00	0.00	5,800.0	0.0	0.0	0.0	0.00	0.00	0.00
5,900.0	0.00	0.00	5,900.0	0.0	0.0	0.0	0.00	0.00	0.00
6,000.0	0.00	0.00	6,000.0	0.0	0.0	0.0	0.00	0.00	0.00
6,100.0	0.00	0.00	6,100.0	0.0	0.0	0.0	0.00	0.00	0.00
6,200.0	0.00	0.00	6,200.0	0.0	0.0	0.0	0.00	0.00	0.00
6,300.0	0.00	0.00	6,300.0	0.0	0.0	0.0	0.00	0.00	0.00
6,400.0	0.00	0.00	6,400.0	0.0	0.0	0.0	0.00	0.00	0.00
6,500.0	0.00	0.00	6,500.0	0.0	0.0	0.0	0.00	0.00	0.00
6,600.0	0.00	0.00	6,600.0	0.0	0.0	0.0	0.00	0.00	0.00
6,700.0	0.00	0.00	6,700.0	0.0	0.0	0.0	0.00	0.00	0.00
6,800.0	0.00	0.00	6,800.0	0.0	0.0	0.0	0.00	0.00	0.00
6,900.0	0.00	0.00	6,900.0	0.0	0.0	0.0	0.00	0.00	0.00
7,000.0	0.00	0.00	7,000.0	0.0	0.0	0.0	0.00	0.00	0.00
7,049.5	0.00	0.00	7,049.5	0.0	0.0	0.0	0.00	0.00	0.00
7,100.0	6.06	201.25	7,099.9	-2.5	-1.0	2.5	12.00	12.00	0.00
7,200.0	18.06	201.25	7,197.5	-21.9	-8.5	22.2	12.00	12.00	0.00
7,300.0	30.06	201.25	7,288.7	-59.9	-23.3	60.5	12.00	12.00	0.00
7,400.0	42.06	201.25	7,369.4	-114.6	-44.6	115.9	12.00	12.00	0.00
7,500.0	54.06	201.25	7,436.1	-183.8	-71.5	185.8	12.00	12.00	0.00
7,600.0	66.06	201.25	7,485.9	-264.4	-102.8	267.3	12.00	12.00	0.00
7,700.0	78.06	201.25	7,516.6	-352.9	-137.2	356.8	12.00	12.00	0.00
7,799.5	90.00	201.25	7,527.0	-445.0	-173.1	449.9	12.00	12.00	0.00
7,800.0	90.00	201.24	7,527.0	-445.5	-173.2	450.3	3.00	0.00	-3.00
7" Intermediate (Opt 2)									
7,900.0	90.00	198.24	7,527.0	-539.6	-207.0	545.4	3.00	0.00	-3.00
8,000.0	90.00	195.24	7,527.0	-635.3	-235.8	641.9	3.00	0.00	-3.00
8,100.0	90.00	192.24	7,527.0	-732.5	-259.5	739.7	3.00	0.00	-3.00
8,200.0	90.00	189.24	7,527.0	-830.7	-278.2	838.5	3.00	0.00	-3.00
8,300.0	90.00	186.24	7,527.0	-929.8	-291.6	937.9	3.00	0.00	-3.00
8,400.0	90.00	183.24	7,527.0	-1,029.4	-299.9	1,037.7	3.00	0.00	-3.00
8,500.0	90.00	180.24	7,527.0	-1,129.4	-302.9	1,137.7	3.00	0.00	-3.00
8,507.9	90.00	180.00	7,527.0	-1,137.3	-302.9	1,145.6	3.00	0.00	-3.00
8,600.0	90.00	180.00	7,527.0	-1,229.4	-302.9	1,237.7	0.00	0.00	0.00
8,700.0	90.00	180.00	7,527.0	-1,329.4	-302.9	1,337.6	0.00	0.00	0.00
8,800.0	90.00	180.00	7,527.0	-1,429.4	-302.9	1,437.6	0.00	0.00	0.00
8,900.0	90.00	180.00	7,527.0	-1,529.4	-302.9	1,537.6	0.00	0.00	0.00
9,000.0	90.00	180.00	7,527.0	-1,629.4	-302.9	1,637.5	0.00	0.00	0.00
9,100.0	90.00	180.00	7,527.0	-1,729.4	-302.9	1,737.5	0.00	0.00	0.00
9,200.0	90.00	180.00	7,527.0	-1,829.4	-302.9	1,837.4	0.00	0.00	0.00
9,300.0	90.00	180.00	7,527.0	-1,929.4	-302.9	1,937.4	0.00	0.00	0.00
9,400.0	90.00	180.00	7,527.0	-2,029.4	-302.9	2,037.3	0.00	0.00	0.00
9,500.0	90.00	180.00	7,527.0	-2,129.4	-302.9	2,137.3	0.00	0.00	0.00
9,600.0	90.00	180.00	7,527.0	-2,229.4	-302.9	2,237.3	0.00	0.00	0.00
9,700.0	90.00	180.00	7,527.0	-2,329.4	-302.9	2,337.2	0.00	0.00	0.00
9,800.0	90.00	180.00	7,527.0	-2,429.4	-302.9	2,437.2	0.00	0.00	0.00
9,900.0	90.00	180.00	7,527.0	-2,529.4	-302.9	2,537.1	0.00	0.00	0.00
10,000.0	90.00	180.00	7,527.0	-2,629.4	-302.8	2,637.1	0.00	0.00	0.00

# EOG Resources, Inc.

## Planning Report

<b>Database:</b>	EDM_DENVER	<b>Local Co-ordinate Reference:</b>	Well Randall Creek 515-3006H
<b>Company:</b>	Denver Division- Colorado	<b>TVD Reference:</b>	RKB @ 5400.0usft (KB GL+25')
<b>Project:</b>	DJ - Hereford Ranch	<b>MD Reference:</b>	RKB @ 5400.0usft (KB GL+25')
<b>Site:</b>	Randall Creek R30 SWSE	<b>North Reference:</b>	True
<b>Well:</b>	Randall Creek 515-3006H	<b>Survey Calculation Method:</b>	Minimum Curvature
<b>Wellbore:</b>	OH		
<b>Design:</b>	APD Plan (Plat Cert 5/19/15)		

Planned Survey									
Measured Depth (usft)	Inclination (°)	Azimuth (°)	Vertical Depth (usft)	+N/-S (usft)	+E/-W (usft)	Vertical Section (usft)	Dogleg Rate (°/100usft)	Build Rate (°/100usft)	Turn Rate (°/100usft)
10,100.0	90.00	180.00	7,527.0	-2,729.4	-302.8	2,737.0	0.00	0.00	0.00
10,200.0	90.00	180.00	7,527.0	-2,829.4	-302.8	2,837.0	0.00	0.00	0.00
10,300.0	90.00	180.00	7,527.0	-2,929.4	-302.8	2,937.0	0.00	0.00	0.00
10,400.0	90.00	180.00	7,527.0	-3,029.4	-302.8	3,036.9	0.00	0.00	0.00
10,500.0	90.00	180.00	7,527.0	-3,129.4	-302.8	3,136.9	0.00	0.00	0.00
10,600.0	90.00	180.00	7,527.0	-3,229.4	-302.8	3,236.8	0.00	0.00	0.00
10,700.0	90.00	180.00	7,527.0	-3,329.4	-302.8	3,336.8	0.00	0.00	0.00
10,800.0	90.00	180.00	7,527.0	-3,429.4	-302.8	3,436.7	0.00	0.00	0.00
10,900.0	90.00	180.00	7,527.0	-3,529.4	-302.8	3,536.7	0.00	0.00	0.00
11,000.0	90.00	180.00	7,527.0	-3,629.4	-302.8	3,636.7	0.00	0.00	0.00
11,100.0	90.00	180.00	7,527.0	-3,729.4	-302.8	3,736.6	0.00	0.00	0.00
11,200.0	90.00	180.00	7,527.0	-3,829.4	-302.8	3,836.6	0.00	0.00	0.00
11,300.0	90.00	180.00	7,527.0	-3,929.4	-302.8	3,936.5	0.00	0.00	0.00
11,400.0	90.00	180.00	7,527.0	-4,029.4	-302.8	4,036.5	0.00	0.00	0.00
11,500.0	90.00	180.00	7,527.0	-4,129.4	-302.8	4,136.4	0.00	0.00	0.00
11,600.0	90.00	180.00	7,527.0	-4,229.4	-302.8	4,236.4	0.00	0.00	0.00
11,700.0	90.00	180.00	7,527.0	-4,329.4	-302.8	4,336.4	0.00	0.00	0.00
11,800.0	90.00	180.00	7,527.0	-4,429.4	-302.8	4,436.3	0.00	0.00	0.00
11,900.0	90.00	180.00	7,527.0	-4,529.4	-302.8	4,536.3	0.00	0.00	0.00
12,000.0	90.00	180.00	7,527.0	-4,629.4	-302.8	4,636.2	0.00	0.00	0.00
12,100.0	90.00	180.00	7,527.0	-4,729.4	-302.8	4,736.2	0.00	0.00	0.00
12,200.0	90.00	180.00	7,527.0	-4,829.4	-302.8	4,836.1	0.00	0.00	0.00
12,300.0	90.00	180.00	7,527.0	-4,929.4	-302.8	4,936.1	0.00	0.00	0.00
12,400.0	90.00	180.00	7,527.0	-5,029.4	-302.8	5,036.1	0.00	0.00	0.00
12,500.0	90.00	180.00	7,527.0	-5,129.4	-302.7	5,136.0	0.00	0.00	0.00
12,600.0	90.00	180.00	7,527.0	-5,229.4	-302.7	5,236.0	0.00	0.00	0.00
12,700.0	90.00	180.00	7,527.0	-5,329.4	-302.7	5,335.9	0.00	0.00	0.00
12,800.0	90.00	180.00	7,527.0	-5,429.4	-302.7	5,435.9	0.00	0.00	0.00
12,900.0	90.00	180.00	7,527.0	-5,529.4	-302.7	5,535.8	0.00	0.00	0.00
13,000.0	90.00	180.00	7,527.0	-5,629.4	-302.7	5,635.8	0.00	0.00	0.00
13,100.0	90.00	180.00	7,527.0	-5,729.4	-302.7	5,735.8	0.00	0.00	0.00
13,200.0	90.00	180.00	7,527.0	-5,829.4	-302.7	5,835.7	0.00	0.00	0.00
13,300.0	90.00	180.00	7,527.0	-5,929.4	-302.7	5,935.7	0.00	0.00	0.00
13,400.0	90.00	180.00	7,527.0	-6,029.4	-302.7	6,035.6	0.00	0.00	0.00
13,500.0	90.00	180.00	7,527.0	-6,129.4	-302.7	6,135.6	0.00	0.00	0.00
13,600.0	90.00	180.00	7,527.0	-6,229.4	-302.7	6,235.6	0.00	0.00	0.00
13,700.0	90.00	180.00	7,527.0	-6,329.4	-302.7	6,335.5	0.00	0.00	0.00
13,800.0	90.00	180.00	7,527.0	-6,429.4	-302.7	6,435.5	0.00	0.00	0.00
13,900.0	90.00	180.00	7,527.0	-6,529.4	-302.7	6,535.4	0.00	0.00	0.00
14,000.0	90.00	180.00	7,527.0	-6,629.4	-302.7	6,635.4	0.00	0.00	0.00
14,100.0	90.00	180.00	7,527.0	-6,729.4	-302.7	6,735.3	0.00	0.00	0.00
14,200.0	90.00	180.00	7,527.0	-6,829.4	-302.7	6,835.3	0.00	0.00	0.00
14,300.0	90.00	180.00	7,527.0	-6,929.4	-302.7	6,935.3	0.00	0.00	0.00
14,400.0	90.00	180.00	7,527.0	-7,029.4	-302.7	7,035.2	0.00	0.00	0.00
14,500.0	90.00	180.00	7,527.0	-7,129.4	-302.7	7,135.2	0.00	0.00	0.00
14,600.0	90.00	180.00	7,527.0	-7,229.4	-302.7	7,235.1	0.00	0.00	0.00
14,700.0	90.00	180.00	7,527.0	-7,329.4	-302.7	7,335.1	0.00	0.00	0.00
14,800.0	90.00	180.00	7,527.0	-7,429.4	-302.7	7,435.0	0.00	0.00	0.00
14,900.0	90.00	180.00	7,527.0	-7,529.4	-302.6	7,535.0	0.00	0.00	0.00
15,000.0	90.00	180.00	7,527.0	-7,629.4	-302.6	7,635.0	0.00	0.00	0.00
15,100.0	90.00	180.00	7,527.0	-7,729.4	-302.6	7,734.9	0.00	0.00	0.00
15,200.0	90.00	180.00	7,527.0	-7,829.4	-302.6	7,834.9	0.00	0.00	0.00
15,300.0	90.00	180.00	7,527.0	-7,929.4	-302.6	7,934.8	0.00	0.00	0.00
15,400.0	90.00	180.00	7,527.0	-8,029.4	-302.6	8,034.8	0.00	0.00	0.00

# EOG Resources, Inc.

## Planning Report

<b>Database:</b>	EDM_DENVER	<b>Local Co-ordinate Reference:</b>	Well Randall Creek 515-3006H
<b>Company:</b>	Denver Division- Colorado	<b>TVD Reference:</b>	RKB @ 5400.0usft (KB GL+25')
<b>Project:</b>	DJ - Hereford Ranch	<b>MD Reference:</b>	RKB @ 5400.0usft (KB GL+25')
<b>Site:</b>	Randall Creek R30 SWSE	<b>North Reference:</b>	True
<b>Well:</b>	Randall Creek 515-3006H	<b>Survey Calculation Method:</b>	Minimum Curvature
<b>Wellbore:</b>	OH		
<b>Design:</b>	APD Plan (Plat Cert 5/19/15)		

Planned Survey										
Measured Depth (usft)	Inclination (°)	Azimuth (°)	Vertical Depth (usft)	+N/-S (usft)	+E/-W (usft)	Vertical Section (usft)	Dogleg Rate (°/100usft)	Build Rate (°/100usft)	Turn Rate (°/100usft)	
15,500.0	90.00	180.00	7,527.0	-8,129.4	-302.6	8,134.7	0.00	0.00	0.00	
15,600.0	90.00	180.00	7,527.0	-8,229.4	-302.6	8,234.7	0.00	0.00	0.00	
15,700.0	90.00	180.00	7,527.0	-8,329.4	-302.6	8,334.7	0.00	0.00	0.00	
15,800.0	90.00	180.00	7,527.0	-8,429.4	-302.6	8,434.6	0.00	0.00	0.00	
15,900.0	90.00	180.00	7,527.0	-8,529.4	-302.6	8,534.6	0.00	0.00	0.00	
16,000.0	90.00	180.00	7,527.0	-8,629.4	-302.6	8,634.5	0.00	0.00	0.00	
16,100.0	90.00	180.00	7,527.0	-8,729.4	-302.6	8,734.5	0.00	0.00	0.00	
16,200.0	90.00	180.00	7,527.0	-8,829.4	-302.6	8,834.4	0.00	0.00	0.00	
16,300.0	90.00	180.00	7,527.0	-8,929.4	-302.6	8,934.4	0.00	0.00	0.00	
16,400.0	90.00	180.00	7,527.0	-9,029.4	-302.6	9,034.4	0.00	0.00	0.00	
16,500.0	90.00	180.00	7,527.0	-9,129.4	-302.6	9,134.3	0.00	0.00	0.00	
16,600.0	90.00	180.00	7,527.0	-9,229.4	-302.6	9,234.3	0.00	0.00	0.00	
16,700.0	90.00	180.00	7,527.0	-9,329.4	-302.6	9,334.2	0.00	0.00	0.00	
16,800.0	90.00	180.00	7,527.0	-9,429.4	-302.6	9,434.2	0.00	0.00	0.00	
16,900.0	90.00	180.00	7,527.0	-9,529.4	-302.6	9,534.1	0.00	0.00	0.00	
17,000.0	90.00	180.00	7,527.0	-9,629.4	-302.6	9,634.1	0.00	0.00	0.00	
17,100.0	90.00	180.00	7,527.0	-9,729.4	-302.6	9,734.1	0.00	0.00	0.00	
17,200.0	90.00	180.00	7,527.0	-9,829.4	-302.6	9,834.0	0.00	0.00	0.00	
17,300.0	90.00	180.00	7,527.0	-9,929.4	-302.6	9,934.0	0.00	0.00	0.00	
17,400.0	90.00	180.00	7,527.0	-10,029.4	-302.5	10,033.9	0.00	0.00	0.00	
17,500.0	90.00	180.00	7,527.0	-10,129.4	-302.5	10,133.9	0.00	0.00	0.00	
17,600.0	90.00	180.00	7,527.0	-10,229.4	-302.5	10,233.8	0.00	0.00	0.00	
17,700.0	90.00	180.00	7,527.0	-10,329.4	-302.5	10,333.8	0.00	0.00	0.00	
17,740.9	90.00	180.00	7,527.0	-10,370.3	-302.5	10,374.7	0.00	0.00	0.00	
5 1/2" Prod (Opt 1) - 4 1/2" Liner (Opt 2)										

Design Targets										
Target Name	Dip Angle (°)	Dip Dir. (°)	TVD (usft)	+N/-S (usft)	+E/-W (usft)	Northing (usft)	Easting (usft)	Latitude	Longitude	
- hit/miss target										
- Shape										
Randall Creek 515-3006	0.00	0.00	7,527.0	-10,370.3	-302.5	589,726.67	2,314,530.76	40° 56' 47.935 N	104° 21' 41.349 W	
- plan hits target center										
- Point										

Casing Points						
Measured Depth (usft)	Vertical Depth (usft)	Name	Casing Diameter (")	Hole Diameter (")		
1,396.0	1,396.0	9 5/8" Surface	9-5/8	13-1/2		
7,800.0	7,527.0	7" Intermediate (Opt 2)	7	8-3/4		
17,740.9	7,527.0	5 1/2" Prod (Opt 1)	5-1/2	8-3/4		
17,740.9	7,527.0	4 1/2" Liner (Opt 2)	4-1/2	6-1/8		