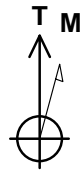
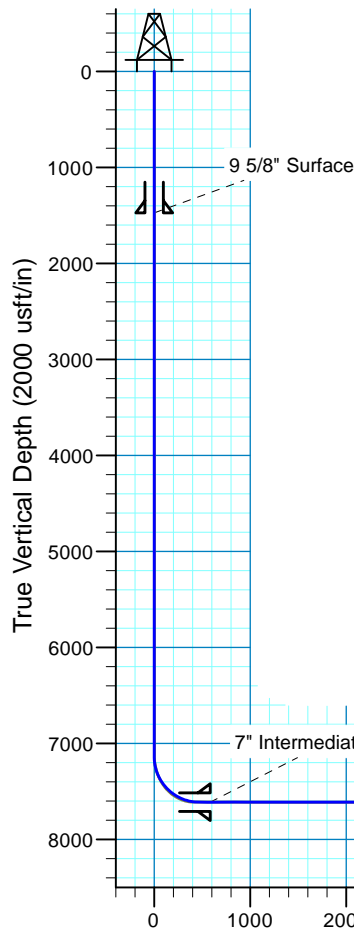
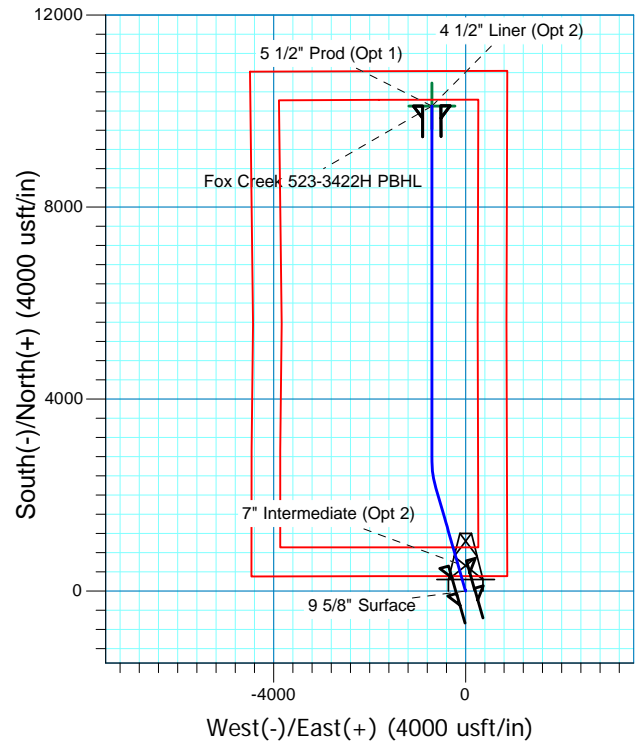


Fox Creek 523-3422H
 Sec.34-T12N-R63W
 Weld County, Colorado

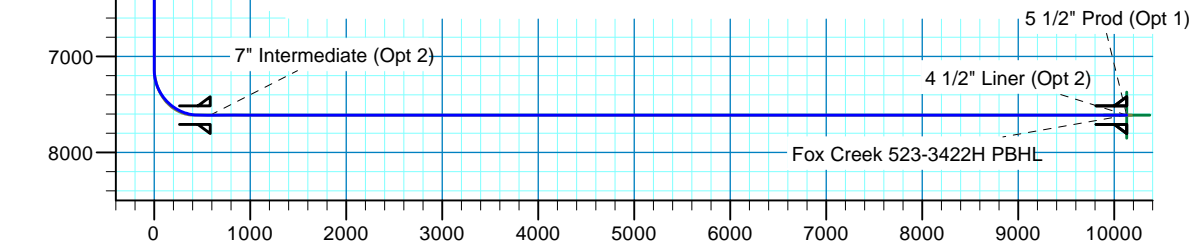
Surface Location			
NAD 1927 (NADCON CONUS) Colorado North 501			
Ground Elevation: 5352.0 RKB @ 5377.0usft (KB GL+25')			
Northing	Easting	Latitude	Longitude
598897.02	2300442.03	40° 58' 20.283 N	104° 24' 43.455 W



Azimuths to True North
 Magnetic North: 8.28°
 Magnetic Field
 Strength: 52951.5snT
 Dip Angle: 67.42°
 Date: 6/8/2015
 Model: IGRF2015



Project: DJ - Hereford Ranch
 Site: Fox Creek F34 NENE Pad
 Well: Fox Creek 523-3422H
 Plan: APD Plan (Plat Cert 5/7/15)



SECTION DETAILS										
Sec	MD	Inc	Azi	TVD	+N/-S	+E/-W	Dleg	TFace	VSect	Target
1	0.0	0.00	0.00	0.0	0.0	0.0	0.00	0.00	0.0	
2	7135.3	0.00	0.00	7135.3	0.0	0.0	0.00	0.00	0.0	
3	7885.3	90.00	344.00	7612.8	459.0	-131.6	12.00	344.00	467.0	
4	9680.3	90.00	344.00	7612.8	2184.4	-626.4	0.00	0.00	2222.5	
5	10213.7	90.00	360.00	7612.8	2710.9	-700.4	3.00	90.00	2752.8	Fox Creek 523-3422H PBHL
6	17608.9	90.00	360.00	7612.8	10106.1	-700.4	0.00	0.00	10130.4	Fox Creek 523-3422H PBHL
TARGET DETAILS										
Name	TVD	+N/-S	+E/-W	Northing	Easting	Latitude	Longitude	Shape		
Fox Creek 523-3422H PBHL	7613.0	10106.1	-700.4	608993.78	2299617.69	41° 0' 0.136 N	104° 24' 52.589 W	Point		

Denver Division- Colorado

**DJ - Hereford Ranch
Fox Creek F34 NENE Pad
Fox Creek 523-3422H**

OH

Plan: APD Plan (Plat Cert 5/7/15)

Standard Planning Report

13 August, 2015

EOG Resources, Inc.

Planning Report

Database:	EDM_DENVER	Local Co-ordinate Reference:	Well Fox Creek 523-3422H
Company:	Denver Division- Colorado	TVD Reference:	RKB @ 5377.0usft (KB GL+25')
Project:	DJ - Hereford Ranch	MD Reference:	RKB @ 5377.0usft (KB GL+25')
Site:	Fox Creek F34 NENE Pad	North Reference:	True
Well:	Fox Creek 523-3422H	Survey Calculation Method:	Minimum Curvature
Wellbore:	OH		
Design:	APD Plan (Plat Cert 5/7/15)		

Project	DJ - Hereford Ranch, Weld County		
Map System:	US State Plane 1927 (Exact solution)	System Datum:	Mean Sea Level
Geo Datum:	NAD 1927 (NADCON CONUS)		
Map Zone:	Colorado North 501		

Site	Fox Creek F34 NENE Pad		
Site Position:		Northing:	598,700.00 usft
From:	Map	Easting:	2,300,650.00 usft
Position Uncertainty:	0.0 usft	Slot Radius:	13-3/16 "
		Latitude:	40° 58' 18.312 N
		Longitude:	104° 24' 40.775 W
		Grid Convergence:	0.70 °

Well	Fox Creek 523-3422H		
Well Position	+N/-S	199.6 usft	Northing: 598,897.02 usft
	+E/-W	-205.5 usft	Easting: 2,300,442.03 usft
Position Uncertainty	0.0 usft	Wellhead Elevation:	0.0 usft
		Latitude:	40° 58' 20.283 N
		Longitude:	104° 24' 43.455 W
		Ground Level:	5,352.0 usft

Wellbore	OH		
Magnetics	Model Name	Sample Date	Declination (°)
	IGRF2015	6/8/2015	8.28
			Dip Angle (°)
			67.42
			Field Strength (nT)
			52,951

Design	APD Plan (Plat Cert 5/7/15)		
Audit Notes:			
Version:	Phase:	PROTOTYPE	Tie On Depth: 0.0
Vertical Section:	Depth From (TVD) (usft)	+N/-S (usft)	+E/-W (usft)
	0.0	0.0	0.0
			Direction (°)
			356.04

Plan Sections										
Measured Depth (usft)	Inclination (°)	Azimuth (°)	Vertical Depth (usft)	+N/-S (usft)	+E/-W (usft)	Dogleg Rate (°/100usft)	Build Rate (°/100usft)	Turn Rate (°/100usft)	TFO (°)	Target
0.0	0.00	0.00	0.0	0.0	0.0	0.00	0.00	0.00	0.00	
7,135.3	0.00	0.00	7,135.3	0.0	0.0	0.00	0.00	0.00	0.00	
7,885.3	90.00	344.00	7,612.8	459.0	-131.6	12.00	12.00	0.00	344.00	
9,680.3	90.00	344.00	7,612.8	2,184.4	-626.4	0.00	0.00	0.00	0.00	
10,213.7	90.00	360.00	7,612.8	2,710.9	-700.4	3.00	0.00	3.00	90.00	Fox Creek 523-3422H
17,608.9	90.00	360.00	7,612.8	10,106.1	-700.4	0.00	0.00	0.00	0.00	Fox Creek 523-3422H

EOG Resources, Inc.

Planning Report

Database:	EDM_DENVER	Local Co-ordinate Reference:	Well Fox Creek 523-3422H
Company:	Denver Division- Colorado	TVD Reference:	RKB @ 5377.0usft (KB GL+25')
Project:	DJ - Hereford Ranch	MD Reference:	RKB @ 5377.0usft (KB GL+25')
Site:	Fox Creek F34 NENE Pad	North Reference:	True
Well:	Fox Creek 523-3422H	Survey Calculation Method:	Minimum Curvature
Wellbore:	OH		
Design:	APD Plan (Plat Cert 5/7/15)		

Planned Survey									
Measured Depth (usft)	Inclination (°)	Azimuth (°)	Vertical Depth (usft)	+N/-S (usft)	+E/-W (usft)	Vertical Section (usft)	Dogleg Rate (°/100usft)	Build Rate (°/100usft)	Turn Rate (°/100usft)
0.0	0.00	0.00	0.0	0.0	0.0	0.0	0.00	0.00	0.00
100.0	0.00	0.00	100.0	0.0	0.0	0.0	0.00	0.00	0.00
200.0	0.00	0.00	200.0	0.0	0.0	0.0	0.00	0.00	0.00
300.0	0.00	0.00	300.0	0.0	0.0	0.0	0.00	0.00	0.00
400.0	0.00	0.00	400.0	0.0	0.0	0.0	0.00	0.00	0.00
500.0	0.00	0.00	500.0	0.0	0.0	0.0	0.00	0.00	0.00
600.0	0.00	0.00	600.0	0.0	0.0	0.0	0.00	0.00	0.00
700.0	0.00	0.00	700.0	0.0	0.0	0.0	0.00	0.00	0.00
800.0	0.00	0.00	800.0	0.0	0.0	0.0	0.00	0.00	0.00
900.0	0.00	0.00	900.0	0.0	0.0	0.0	0.00	0.00	0.00
1,000.0	0.00	0.00	1,000.0	0.0	0.0	0.0	0.00	0.00	0.00
1,100.0	0.00	0.00	1,100.0	0.0	0.0	0.0	0.00	0.00	0.00
1,200.0	0.00	0.00	1,200.0	0.0	0.0	0.0	0.00	0.00	0.00
1,300.0	0.00	0.00	1,300.0	0.0	0.0	0.0	0.00	0.00	0.00
1,400.0	0.00	0.00	1,400.0	0.0	0.0	0.0	0.00	0.00	0.00
1,475.0	0.00	0.00	1,475.0	0.0	0.0	0.0	0.00	0.00	0.00
9 5/8" Surface									
1,500.0	0.00	0.00	1,500.0	0.0	0.0	0.0	0.00	0.00	0.00
1,600.0	0.00	0.00	1,600.0	0.0	0.0	0.0	0.00	0.00	0.00
1,700.0	0.00	0.00	1,700.0	0.0	0.0	0.0	0.00	0.00	0.00
1,800.0	0.00	0.00	1,800.0	0.0	0.0	0.0	0.00	0.00	0.00
1,900.0	0.00	0.00	1,900.0	0.0	0.0	0.0	0.00	0.00	0.00
2,000.0	0.00	0.00	2,000.0	0.0	0.0	0.0	0.00	0.00	0.00
2,100.0	0.00	0.00	2,100.0	0.0	0.0	0.0	0.00	0.00	0.00
2,200.0	0.00	0.00	2,200.0	0.0	0.0	0.0	0.00	0.00	0.00
2,300.0	0.00	0.00	2,300.0	0.0	0.0	0.0	0.00	0.00	0.00
2,400.0	0.00	0.00	2,400.0	0.0	0.0	0.0	0.00	0.00	0.00
2,500.0	0.00	0.00	2,500.0	0.0	0.0	0.0	0.00	0.00	0.00
2,600.0	0.00	0.00	2,600.0	0.0	0.0	0.0	0.00	0.00	0.00
2,700.0	0.00	0.00	2,700.0	0.0	0.0	0.0	0.00	0.00	0.00
2,800.0	0.00	0.00	2,800.0	0.0	0.0	0.0	0.00	0.00	0.00
2,900.0	0.00	0.00	2,900.0	0.0	0.0	0.0	0.00	0.00	0.00
3,000.0	0.00	0.00	3,000.0	0.0	0.0	0.0	0.00	0.00	0.00
3,100.0	0.00	0.00	3,100.0	0.0	0.0	0.0	0.00	0.00	0.00
3,200.0	0.00	0.00	3,200.0	0.0	0.0	0.0	0.00	0.00	0.00
3,300.0	0.00	0.00	3,300.0	0.0	0.0	0.0	0.00	0.00	0.00
3,400.0	0.00	0.00	3,400.0	0.0	0.0	0.0	0.00	0.00	0.00
3,500.0	0.00	0.00	3,500.0	0.0	0.0	0.0	0.00	0.00	0.00
3,600.0	0.00	0.00	3,600.0	0.0	0.0	0.0	0.00	0.00	0.00
3,700.0	0.00	0.00	3,700.0	0.0	0.0	0.0	0.00	0.00	0.00
3,800.0	0.00	0.00	3,800.0	0.0	0.0	0.0	0.00	0.00	0.00
3,900.0	0.00	0.00	3,900.0	0.0	0.0	0.0	0.00	0.00	0.00
4,000.0	0.00	0.00	4,000.0	0.0	0.0	0.0	0.00	0.00	0.00
4,100.0	0.00	0.00	4,100.0	0.0	0.0	0.0	0.00	0.00	0.00
4,200.0	0.00	0.00	4,200.0	0.0	0.0	0.0	0.00	0.00	0.00
4,300.0	0.00	0.00	4,300.0	0.0	0.0	0.0	0.00	0.00	0.00
4,400.0	0.00	0.00	4,400.0	0.0	0.0	0.0	0.00	0.00	0.00
4,500.0	0.00	0.00	4,500.0	0.0	0.0	0.0	0.00	0.00	0.00
4,600.0	0.00	0.00	4,600.0	0.0	0.0	0.0	0.00	0.00	0.00
4,700.0	0.00	0.00	4,700.0	0.0	0.0	0.0	0.00	0.00	0.00
4,800.0	0.00	0.00	4,800.0	0.0	0.0	0.0	0.00	0.00	0.00
4,900.0	0.00	0.00	4,900.0	0.0	0.0	0.0	0.00	0.00	0.00
5,000.0	0.00	0.00	5,000.0	0.0	0.0	0.0	0.00	0.00	0.00
5,100.0	0.00	0.00	5,100.0	0.0	0.0	0.0	0.00	0.00	0.00

EOG Resources, Inc.

Planning Report

Database:	EDM_DENVER	Local Co-ordinate Reference:	Well Fox Creek 523-3422H
Company:	Denver Division- Colorado	TVD Reference:	RKB @ 5377.0usft (KB GL+25')
Project:	DJ - Hereford Ranch	MD Reference:	RKB @ 5377.0usft (KB GL+25')
Site:	Fox Creek F34 NENE Pad	North Reference:	True
Well:	Fox Creek 523-3422H	Survey Calculation Method:	Minimum Curvature
Wellbore:	OH		
Design:	APD Plan (Plat Cert 5/7/15)		

Planned Survey									
Measured Depth (usft)	Inclination (°)	Azimuth (°)	Vertical Depth (usft)	+N/-S (usft)	+E/-W (usft)	Vertical Section (usft)	Dogleg Rate (°/100usft)	Build Rate (°/100usft)	Turn Rate (°/100usft)
5,200.0	0.00	0.00	5,200.0	0.0	0.0	0.0	0.00	0.00	0.00
5,300.0	0.00	0.00	5,300.0	0.0	0.0	0.0	0.00	0.00	0.00
5,400.0	0.00	0.00	5,400.0	0.0	0.0	0.0	0.00	0.00	0.00
5,500.0	0.00	0.00	5,500.0	0.0	0.0	0.0	0.00	0.00	0.00
5,600.0	0.00	0.00	5,600.0	0.0	0.0	0.0	0.00	0.00	0.00
5,700.0	0.00	0.00	5,700.0	0.0	0.0	0.0	0.00	0.00	0.00
5,800.0	0.00	0.00	5,800.0	0.0	0.0	0.0	0.00	0.00	0.00
5,900.0	0.00	0.00	5,900.0	0.0	0.0	0.0	0.00	0.00	0.00
6,000.0	0.00	0.00	6,000.0	0.0	0.0	0.0	0.00	0.00	0.00
6,100.0	0.00	0.00	6,100.0	0.0	0.0	0.0	0.00	0.00	0.00
6,200.0	0.00	0.00	6,200.0	0.0	0.0	0.0	0.00	0.00	0.00
6,300.0	0.00	0.00	6,300.0	0.0	0.0	0.0	0.00	0.00	0.00
6,400.0	0.00	0.00	6,400.0	0.0	0.0	0.0	0.00	0.00	0.00
6,500.0	0.00	0.00	6,500.0	0.0	0.0	0.0	0.00	0.00	0.00
6,600.0	0.00	0.00	6,600.0	0.0	0.0	0.0	0.00	0.00	0.00
6,700.0	0.00	0.00	6,700.0	0.0	0.0	0.0	0.00	0.00	0.00
6,800.0	0.00	0.00	6,800.0	0.0	0.0	0.0	0.00	0.00	0.00
6,900.0	0.00	0.00	6,900.0	0.0	0.0	0.0	0.00	0.00	0.00
7,000.0	0.00	0.00	7,000.0	0.0	0.0	0.0	0.00	0.00	0.00
7,100.0	0.00	0.00	7,100.0	0.0	0.0	0.0	0.00	0.00	0.00
7,135.3	0.00	0.00	7,135.3	0.0	0.0	0.0	0.00	0.00	0.00
7,200.0	7.76	344.00	7,199.8	4.2	-1.2	4.3	12.00	12.00	0.00
7,300.0	19.76	344.00	7,296.8	27.0	-7.7	27.5	12.00	12.00	0.00
7,400.0	31.76	344.00	7,386.7	68.7	-19.7	69.9	12.00	12.00	0.00
7,500.0	43.76	344.00	7,465.6	127.5	-36.6	129.7	12.00	12.00	0.00
7,600.0	55.76	344.00	7,530.1	200.7	-57.6	204.2	12.00	12.00	0.00
7,700.0	67.76	344.00	7,577.3	285.2	-81.8	290.2	12.00	12.00	0.00
7,800.0	79.76	344.00	7,605.2	377.4	-108.2	383.9	12.00	12.00	0.00
7,885.3	90.00	344.00	7,612.8	459.0	-131.6	467.0	12.00	12.00	0.00
7,900.0	90.00	344.00	7,612.8	473.1	-135.6	481.3	0.00	0.00	0.00
8,000.0	90.00	344.00	7,612.8	569.2	-163.2	579.1	0.00	0.00	0.00
8,007.0	90.00	344.00	7,612.8	575.9	-165.1	585.9	0.00	0.00	0.00
7" Intermediate (Opt 2)									
8,100.0	90.00	344.00	7,612.8	665.3	-190.8	676.9	0.00	0.00	0.00
8,200.0	90.00	344.00	7,612.8	761.4	-218.3	774.7	0.00	0.00	0.00
8,300.0	90.00	344.00	7,612.8	857.6	-245.9	872.5	0.00	0.00	0.00
8,400.0	90.00	344.00	7,612.8	953.7	-273.5	970.3	0.00	0.00	0.00
8,500.0	90.00	344.00	7,612.8	1,049.8	-301.0	1,068.1	0.00	0.00	0.00
8,600.0	90.00	344.00	7,612.8	1,145.9	-328.6	1,165.9	0.00	0.00	0.00
8,700.0	90.00	344.00	7,612.8	1,242.1	-356.2	1,263.7	0.00	0.00	0.00
8,800.0	90.00	344.00	7,612.8	1,338.2	-383.7	1,361.5	0.00	0.00	0.00
8,900.0	90.00	344.00	7,612.8	1,434.3	-411.3	1,459.3	0.00	0.00	0.00
9,000.0	90.00	344.00	7,612.8	1,530.4	-438.8	1,557.1	0.00	0.00	0.00
9,100.0	90.00	344.00	7,612.8	1,626.6	-466.4	1,654.9	0.00	0.00	0.00
9,200.0	90.00	344.00	7,612.8	1,722.7	-494.0	1,752.7	0.00	0.00	0.00
9,300.0	90.00	344.00	7,612.8	1,818.8	-521.5	1,850.5	0.00	0.00	0.00
9,400.0	90.00	344.00	7,612.8	1,914.9	-549.1	1,948.3	0.00	0.00	0.00
9,500.0	90.00	344.00	7,612.8	2,011.1	-576.7	2,046.1	0.00	0.00	0.00
9,600.0	90.00	344.00	7,612.8	2,107.2	-604.2	2,143.9	0.00	0.00	0.00
9,680.3	90.00	344.00	7,612.8	2,184.4	-626.4	2,222.5	0.00	0.00	0.00
9,700.0	90.00	344.59	7,612.8	2,203.3	-631.7	2,241.8	3.00	0.00	3.00
9,800.0	90.00	347.59	7,612.8	2,300.4	-655.7	2,340.2	3.00	0.00	3.00
9,900.0	90.00	350.59	7,612.8	2,398.6	-674.7	2,439.5	3.00	0.00	3.00

EOG Resources, Inc.

Planning Report

Database:	EDM_DENVER	Local Co-ordinate Reference:	Well Fox Creek 523-3422H
Company:	Denver Division- Colorado	TVD Reference:	RKB @ 5377.0usft (KB GL+25')
Project:	DJ - Hereford Ranch	MD Reference:	RKB @ 5377.0usft (KB GL+25')
Site:	Fox Creek F34 NENE Pad	North Reference:	True
Well:	Fox Creek 523-3422H	Survey Calculation Method:	Minimum Curvature
Wellbore:	OH		
Design:	APD Plan (Plat Cert 5/7/15)		

Planned Survey										
Measured Depth (usft)	Inclination (°)	Azimuth (°)	Vertical Depth (usft)	+N/-S (usft)	+E/-W (usft)	Vertical Section (usft)	Dogleg Rate (°/100usft)	Build Rate (°/100usft)	Turn Rate (°/100usft)	
10,000.0	90.00	353.59	7,612.8	2,497.6	-688.4	2,539.2	3.00	0.00	3.00	
10,100.0	90.00	356.59	7,612.8	2,597.2	-697.0	2,639.2	3.00	0.00	3.00	
10,200.0	90.00	359.59	7,612.8	2,697.2	-700.3	2,739.1	3.00	0.00	3.00	
10,213.7	90.00	360.00	7,612.8	2,710.9	-700.4	2,752.8	3.00	0.00	3.00	
10,300.0	90.00	360.00	7,612.8	2,797.2	-700.4	2,838.9	0.00	0.00	0.00	
10,400.0	90.00	360.00	7,612.8	2,897.2	-700.4	2,938.7	0.00	0.00	0.00	
10,500.0	90.00	360.00	7,612.8	2,997.2	-700.4	3,038.4	0.00	0.00	0.00	
10,600.0	90.00	360.00	7,612.8	3,097.2	-700.4	3,138.2	0.00	0.00	0.00	
10,700.0	90.00	360.00	7,612.8	3,197.2	-700.4	3,238.0	0.00	0.00	0.00	
10,800.0	90.00	360.00	7,612.8	3,297.2	-700.4	3,337.7	0.00	0.00	0.00	
10,900.0	90.00	360.00	7,612.8	3,397.2	-700.4	3,437.5	0.00	0.00	0.00	
11,000.0	90.00	360.00	7,612.8	3,497.2	-700.4	3,537.2	0.00	0.00	0.00	
11,100.0	90.00	360.00	7,612.8	3,597.2	-700.4	3,637.0	0.00	0.00	0.00	
11,200.0	90.00	360.00	7,612.8	3,697.2	-700.4	3,736.8	0.00	0.00	0.00	
11,300.0	90.00	360.00	7,612.8	3,797.2	-700.4	3,836.5	0.00	0.00	0.00	
11,400.0	90.00	360.00	7,612.8	3,897.2	-700.4	3,936.3	0.00	0.00	0.00	
11,500.0	90.00	360.00	7,612.8	3,997.2	-700.4	4,036.0	0.00	0.00	0.00	
11,600.0	90.00	360.00	7,612.8	4,097.2	-700.4	4,135.8	0.00	0.00	0.00	
11,700.0	90.00	360.00	7,612.8	4,197.2	-700.4	4,235.6	0.00	0.00	0.00	
11,800.0	90.00	360.00	7,612.8	4,297.2	-700.4	4,335.3	0.00	0.00	0.00	
11,900.0	90.00	360.00	7,612.8	4,397.2	-700.4	4,435.1	0.00	0.00	0.00	
12,000.0	90.00	360.00	7,612.8	4,497.2	-700.4	4,534.8	0.00	0.00	0.00	
12,100.0	90.00	360.00	7,612.8	4,597.2	-700.4	4,634.6	0.00	0.00	0.00	
12,200.0	90.00	360.00	7,612.8	4,697.2	-700.4	4,734.4	0.00	0.00	0.00	
12,300.0	90.00	360.00	7,612.8	4,797.2	-700.4	4,834.1	0.00	0.00	0.00	
12,400.0	90.00	360.00	7,612.8	4,897.2	-700.4	4,933.9	0.00	0.00	0.00	
12,500.0	90.00	360.00	7,612.8	4,997.2	-700.4	5,033.6	0.00	0.00	0.00	
12,600.0	90.00	360.00	7,612.8	5,097.2	-700.4	5,133.4	0.00	0.00	0.00	
12,700.0	90.00	360.00	7,612.8	5,197.2	-700.4	5,233.2	0.00	0.00	0.00	
12,800.0	90.00	360.00	7,612.8	5,297.2	-700.4	5,332.9	0.00	0.00	0.00	
12,900.0	90.00	360.00	7,612.8	5,397.2	-700.4	5,432.7	0.00	0.00	0.00	
13,000.0	90.00	360.00	7,612.8	5,497.2	-700.4	5,532.4	0.00	0.00	0.00	
13,100.0	90.00	360.00	7,612.8	5,597.2	-700.4	5,632.2	0.00	0.00	0.00	
13,200.0	90.00	360.00	7,612.8	5,697.2	-700.4	5,732.0	0.00	0.00	0.00	
13,300.0	90.00	360.00	7,612.8	5,797.2	-700.4	5,831.7	0.00	0.00	0.00	
13,400.0	90.00	360.00	7,612.8	5,897.2	-700.4	5,931.5	0.00	0.00	0.00	
13,500.0	90.00	360.00	7,612.8	5,997.2	-700.4	6,031.3	0.00	0.00	0.00	
13,600.0	90.00	360.00	7,612.8	6,097.2	-700.4	6,131.0	0.00	0.00	0.00	
13,700.0	90.00	360.00	7,612.8	6,197.2	-700.4	6,230.8	0.00	0.00	0.00	
13,800.0	90.00	360.00	7,612.8	6,297.2	-700.4	6,330.5	0.00	0.00	0.00	
13,900.0	90.00	360.00	7,612.8	6,397.2	-700.4	6,430.3	0.00	0.00	0.00	
14,000.0	90.00	360.00	7,612.8	6,497.2	-700.4	6,530.1	0.00	0.00	0.00	
14,100.0	90.00	360.00	7,612.8	6,597.2	-700.4	6,629.8	0.00	0.00	0.00	
14,200.0	90.00	360.00	7,612.8	6,697.2	-700.4	6,729.6	0.00	0.00	0.00	
14,300.0	90.00	360.00	7,612.8	6,797.2	-700.4	6,829.3	0.00	0.00	0.00	
14,400.0	90.00	360.00	7,612.8	6,897.2	-700.4	6,929.1	0.00	0.00	0.00	
14,500.0	90.00	360.00	7,612.8	6,997.2	-700.4	7,028.9	0.00	0.00	0.00	
14,600.0	90.00	360.00	7,612.8	7,097.2	-700.4	7,128.6	0.00	0.00	0.00	
14,700.0	90.00	360.00	7,612.8	7,197.2	-700.4	7,228.4	0.00	0.00	0.00	
14,800.0	90.00	360.00	7,612.8	7,297.2	-700.4	7,328.1	0.00	0.00	0.00	
14,900.0	90.00	360.00	7,612.8	7,397.2	-700.4	7,427.9	0.00	0.00	0.00	
15,000.0	90.00	360.00	7,612.8	7,497.2	-700.4	7,527.7	0.00	0.00	0.00	
15,100.0	90.00	360.00	7,612.8	7,597.2	-700.4	7,627.4	0.00	0.00	0.00	
15,200.0	90.00	360.00	7,612.8	7,697.2	-700.4	7,727.2	0.00	0.00	0.00	

EOG Resources, Inc.

Planning Report

Database:	EDM_DENVER	Local Co-ordinate Reference:	Well Fox Creek 523-3422H
Company:	Denver Division- Colorado	TVD Reference:	RKB @ 5377.0usft (KB GL+25')
Project:	DJ - Hereford Ranch	MD Reference:	RKB @ 5377.0usft (KB GL+25')
Site:	Fox Creek F34 NENE Pad	North Reference:	True
Well:	Fox Creek 523-3422H	Survey Calculation Method:	Minimum Curvature
Wellbore:	OH		
Design:	APD Plan (Plat Cert 5/7/15)		

Planned Survey										
Measured Depth (usft)	Inclination (°)	Azimuth (°)	Vertical Depth (usft)	+N/-S (usft)	+E/-W (usft)	Vertical Section (usft)	Dogleg Rate (°/100usft)	Build Rate (°/100usft)	Turn Rate (°/100usft)	
15,300.0	90.00	360.00	7,612.8	7,797.2	-700.4	7,826.9	0.00	0.00	0.00	
15,400.0	90.00	360.00	7,612.8	7,897.2	-700.4	7,926.7	0.00	0.00	0.00	
15,500.0	90.00	360.00	7,612.8	7,997.2	-700.4	8,026.5	0.00	0.00	0.00	
15,600.0	90.00	360.00	7,612.8	8,097.2	-700.4	8,126.2	0.00	0.00	0.00	
15,700.0	90.00	360.00	7,612.8	8,197.2	-700.4	8,226.0	0.00	0.00	0.00	
15,800.0	90.00	360.00	7,612.8	8,297.2	-700.4	8,325.7	0.00	0.00	0.00	
15,900.0	90.00	360.00	7,612.8	8,397.2	-700.4	8,425.5	0.00	0.00	0.00	
16,000.0	90.00	360.00	7,612.8	8,497.2	-700.4	8,525.3	0.00	0.00	0.00	
16,100.0	90.00	360.00	7,612.8	8,597.2	-700.4	8,625.0	0.00	0.00	0.00	
16,200.0	90.00	360.00	7,612.8	8,697.2	-700.4	8,724.8	0.00	0.00	0.00	
16,300.0	90.00	360.00	7,612.8	8,797.2	-700.4	8,824.6	0.00	0.00	0.00	
16,400.0	90.00	360.00	7,612.8	8,897.2	-700.4	8,924.3	0.00	0.00	0.00	
16,500.0	90.00	360.00	7,612.8	8,997.2	-700.4	9,024.1	0.00	0.00	0.00	
16,600.0	90.00	360.00	7,612.8	9,097.2	-700.4	9,123.8	0.00	0.00	0.00	
16,700.0	90.00	360.00	7,612.8	9,197.2	-700.4	9,223.6	0.00	0.00	0.00	
16,800.0	90.00	360.00	7,612.8	9,297.2	-700.4	9,323.4	0.00	0.00	0.00	
16,900.0	90.00	360.00	7,612.8	9,397.2	-700.4	9,423.1	0.00	0.00	0.00	
17,000.0	90.00	360.00	7,612.8	9,497.2	-700.4	9,522.9	0.00	0.00	0.00	
17,100.0	90.00	360.00	7,612.8	9,597.2	-700.4	9,622.6	0.00	0.00	0.00	
17,200.0	90.00	360.00	7,612.8	9,697.2	-700.4	9,722.4	0.00	0.00	0.00	
17,300.0	90.00	360.00	7,612.8	9,797.2	-700.4	9,822.2	0.00	0.00	0.00	
17,400.0	90.00	360.00	7,612.8	9,897.2	-700.4	9,921.9	0.00	0.00	0.00	
17,500.0	90.00	360.00	7,612.8	9,997.2	-700.4	10,021.7	0.00	0.00	0.00	
17,600.0	90.00	360.00	7,612.8	10,097.2	-700.4	10,121.4	0.00	0.00	0.00	
17,608.9	90.00	360.00	7,612.8	10,106.1	-700.4	10,130.3	0.00	0.00	0.00	
5 1/2" Prod (Opt 1) - 4 1/2" Liner (Opt 2)										

Design Targets										
Target Name	Dip Angle (°)	Dip Dir. (°)	TVD (usft)	+N/-S (usft)	+E/-W (usft)	Northing (usft)	Easting (usft)	Latitude	Longitude	
- hit/miss target										
- Shape										
Fox Creek 523-3422H P	0.00	0.00	7,613.0	10,106.1	-700.4	608,993.78	2,299,617.69	41° 0' 0.136 N	104° 24' 52.589 W	
- plan misses target center by 0.2usft at 17608.9usft MD (7612.8 TVD, 10106.1 N, -700.4 E)										
- Point										

Casing Points					
Measured Depth (usft)	Vertical Depth (usft)	Name	Casing Diameter (")	Hole Diameter (")	
1,475.0	1,475.0	9 5/8" Surface	9-5/8	13-1/2	
8,007.0	7,612.8	7" Intermediate (Opt 2)	7	8-3/4	
17,608.9	7,612.8	5 1/2" Prod (Opt 1)	5-1/2	7-7/8	
17,608.9	7,612.8	4 1/2" Liner (Opt 2)	4-1/2	6-1/8	