

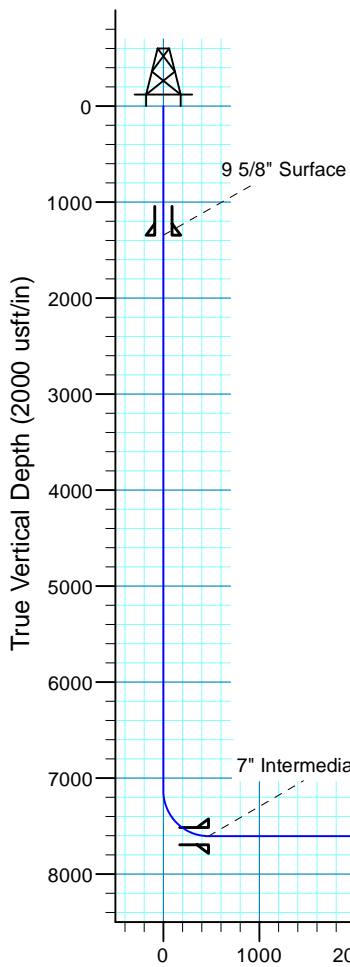


**Fox Creek 525-2623H**  
 Section 26-T12N-R63W  
 Weld County, CO

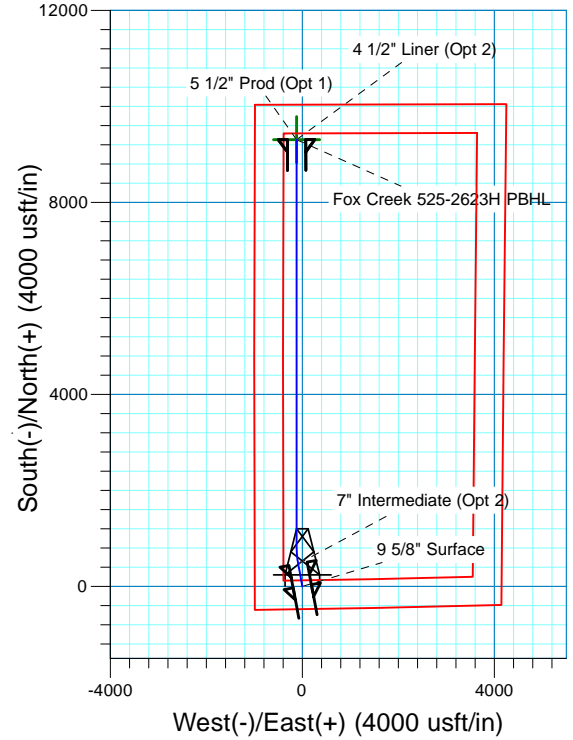
#### Surface Location

NAD 1927 (NADCON CONUS) Colorado North 501  
 Ground Elevation: 5420.0 RKB @ 5445.0usft (KB GL+25')  
 Northing Easting Latitude Longitude  
 599720.76 2302289.76 40° 58' 28.197 N 104° 24' 19.238 W

Project: DJ - Hereford Ranch  
 Site: Fox Creek F26 SWSW Pad  
 Well: Fox Creek 525-2623H  
 Plan: APD Plan (Plat Cert 4/27/15)



Vertical Section at 359.27° (2000 usft/in)



#### SECTION DETAILS

Sec	MD	Inc	Azi	TVD	+N/-S	+E/-W	Dleg	TFace	VSect	Target
1	0.0	0.00	0.00	0.0	0.0	0.0	0.00	0.00	0.0	
2	7127.5	0.00	0.00	7127.5	0.0	0.0	0.00	0.00	0.0	
3	7877.5	90.00	349.60	7605.0	469.6	-86.2	12.00	349.60	470.7	
4	8224.1	90.00	360.00	7605.0	814.3	-117.6	3.00	90.00	815.7	Fox Creek 525-2623H PBHL
5	16714.3	90.00	360.00	7605.0	9304.5	-117.9	0.00	0.00	9305.3	Fox Creek 525-2623H PBHL

#### TARGET DETAILS

Name	TVD	+N/-S	+E/-W	Northing	Easting	Latitude	Longitude	Shape Point
Fox Creek 525-2623H PBHL	7605.0	9304.5	-117.9	609023.11	2302057.00	41° 0' 0.130 N 104° 24' 20.775 W		

# **Denver Division- Colorado**

**DJ - Hereford Ranch  
Fox Creek F26 SWSW Pad  
Fox Creek 525-2623H**

**OH**

**Plan: APD Plan (Plat Cert 4/27/15)**

## **Standard Planning Report**

**30 June, 2015**

# EOG Resources, Inc.

## Planning Report

<b>Database:</b>	EDM_DENVER	<b>Local Co-ordinate Reference:</b>	Well Fox Creek 525-2623H
<b>Company:</b>	Denver Division- Colorado	<b>TVD Reference:</b>	RKB @ 5445.0usft (KB GL+25')
<b>Project:</b>	DJ - Hereford Ranch	<b>MD Reference:</b>	RKB @ 5445.0usft (KB GL+25')
<b>Site:</b>	Fox Creek F26 SWSW Pad	<b>North Reference:</b>	True
<b>Well:</b>	Fox Creek 525-2623H	<b>Survey Calculation Method:</b>	Minimum Curvature
<b>Wellbore:</b>	OH		
<b>Design:</b>	APD Plan (Plat Cert 4/27/15)		

<b>Project</b>	DJ - Hereford Ranch, Weld County		
<b>Map System:</b>	US State Plane 1927 (Exact solution)	<b>System Datum:</b>	Mean Sea Level
<b>Geo Datum:</b>	NAD 1927 (NADCON CONUS)		
<b>Map Zone:</b>	Colorado North 501		

<b>Site</b>	Fox Creek F26 SWSW Pad		
<b>Site Position:</b>		<b>Northing:</b>	599,650.00 usft
<b>From:</b>	Map	<b>Easting:</b>	2,302,300.00 usft
<b>Position Uncertainty:</b>	0.0 usft	<b>Slot Radius:</b>	13-3/16 "
		<b>Latitude:</b>	40° 58' 27.497 N
		<b>Longitude:</b>	104° 24' 19.115 W
		<b>Grid Convergence:</b>	0.71 °

<b>Well</b>	Fox Creek 525-2623H		
<b>Well Position</b>	<b>+N/-S</b>	70.9 usft	<b>Northing:</b>
	<b>+E/-W</b>	-9.4 usft	<b>Easting:</b>
<b>Position Uncertainty</b>	0.0 usft	<b>Wellhead Elevation:</b>	0.0 usft
		<b>Latitude:</b>	40° 58' 28.197 N
		<b>Longitude:</b>	104° 24' 19.238 W
		<b>Ground Level:</b>	5,420.0 usft

<b>Wellbore</b>	OH				
<b>Magnetics</b>	<b>Model Name</b>	<b>Sample Date</b>	<b>Declination (°)</b>	<b>Dip Angle (°)</b>	<b>Field Strength (nT)</b>
	IGRF2015	6/30/2015	8.27	67.42	52,946

<b>Design</b>	APD Plan (Plat Cert 4/27/15)			
<b>Audit Notes:</b>				
<b>Version:</b>	<b>Phase:</b>	PROTOTYPE	<b>Tie On Depth:</b>	0.0
<b>Vertical Section:</b>	<b>Depth From (TVD) (usft)</b>	<b>+N/-S (usft)</b>	<b>+E/-W (usft)</b>	<b>Direction (°)</b>
	0.0	0.0	0.0	359.27

<b>Plan Sections</b>										
Measured Depth (usft)	Inclination (°)	Azimuth (°)	Vertical Depth (usft)	+N/-S (usft)	+E/-W (usft)	Dogleg Rate (°/100usft)	Build Rate (°/100usft)	Turn Rate (°/100usft)	TFO (°)	Target
0.0	0.00	0.00	0.0	0.0	0.0	0.00	0.00	0.00	0.00	
7,127.5	0.00	0.00	7,127.5	0.0	0.0	0.00	0.00	0.00	0.00	
7,877.5	90.00	349.60	7,605.0	469.6	-86.2	12.00	12.00	0.00	349.60	
8,224.1	90.00	360.00	7,605.0	814.3	-117.6	3.00	0.00	3.00	90.00	Fox Creek 525-2623H
16,714.3	90.00	360.00	7,605.0	9,304.5	-117.9	0.00	0.00	0.00	0.00	Fox Creek 525-2623H

# EOG Resources, Inc.

## Planning Report

<b>Database:</b>	EDM_DENVER	<b>Local Co-ordinate Reference:</b>	Well Fox Creek 525-2623H
<b>Company:</b>	Denver Division- Colorado	<b>TVD Reference:</b>	RKB @ 5445.0usft (KB GL+25')
<b>Project:</b>	DJ - Hereford Ranch	<b>MD Reference:</b>	RKB @ 5445.0usft (KB GL+25')
<b>Site:</b>	Fox Creek F26 SWSW Pad	<b>North Reference:</b>	True
<b>Well:</b>	Fox Creek 525-2623H	<b>Survey Calculation Method:</b>	Minimum Curvature
<b>Wellbore:</b>	OH		
<b>Design:</b>	APD Plan (Plat Cert 4/27/15)		

Planned Survey									
Measured Depth (usft)	Inclination (°)	Azimuth (°)	Vertical Depth (usft)	+N/-S (usft)	+E/-W (usft)	Vertical Section (usft)	Dogleg Rate (°/100usft)	Build Rate (°/100usft)	Turn Rate (°/100usft)
0.0	0.00	0.00	0.0	0.0	0.0	0.0	0.00	0.00	0.00
100.0	0.00	0.00	100.0	0.0	0.0	0.0	0.00	0.00	0.00
200.0	0.00	0.00	200.0	0.0	0.0	0.0	0.00	0.00	0.00
300.0	0.00	0.00	300.0	0.0	0.0	0.0	0.00	0.00	0.00
400.0	0.00	0.00	400.0	0.0	0.0	0.0	0.00	0.00	0.00
500.0	0.00	0.00	500.0	0.0	0.0	0.0	0.00	0.00	0.00
600.0	0.00	0.00	600.0	0.0	0.0	0.0	0.00	0.00	0.00
700.0	0.00	0.00	700.0	0.0	0.0	0.0	0.00	0.00	0.00
800.0	0.00	0.00	800.0	0.0	0.0	0.0	0.00	0.00	0.00
900.0	0.00	0.00	900.0	0.0	0.0	0.0	0.00	0.00	0.00
1,000.0	0.00	0.00	1,000.0	0.0	0.0	0.0	0.00	0.00	0.00
1,100.0	0.00	0.00	1,100.0	0.0	0.0	0.0	0.00	0.00	0.00
1,200.0	0.00	0.00	1,200.0	0.0	0.0	0.0	0.00	0.00	0.00
1,300.0	0.00	0.00	1,300.0	0.0	0.0	0.0	0.00	0.00	0.00
1,345.0	0.00	0.00	1,345.0	0.0	0.0	0.0	0.00	0.00	0.00
9 5/8" Surface									
1,400.0	0.00	0.00	1,400.0	0.0	0.0	0.0	0.00	0.00	0.00
1,500.0	0.00	0.00	1,500.0	0.0	0.0	0.0	0.00	0.00	0.00
1,600.0	0.00	0.00	1,600.0	0.0	0.0	0.0	0.00	0.00	0.00
1,700.0	0.00	0.00	1,700.0	0.0	0.0	0.0	0.00	0.00	0.00
1,800.0	0.00	0.00	1,800.0	0.0	0.0	0.0	0.00	0.00	0.00
1,900.0	0.00	0.00	1,900.0	0.0	0.0	0.0	0.00	0.00	0.00
2,000.0	0.00	0.00	2,000.0	0.0	0.0	0.0	0.00	0.00	0.00
2,100.0	0.00	0.00	2,100.0	0.0	0.0	0.0	0.00	0.00	0.00
2,200.0	0.00	0.00	2,200.0	0.0	0.0	0.0	0.00	0.00	0.00
2,300.0	0.00	0.00	2,300.0	0.0	0.0	0.0	0.00	0.00	0.00
2,400.0	0.00	0.00	2,400.0	0.0	0.0	0.0	0.00	0.00	0.00
2,500.0	0.00	0.00	2,500.0	0.0	0.0	0.0	0.00	0.00	0.00
2,600.0	0.00	0.00	2,600.0	0.0	0.0	0.0	0.00	0.00	0.00
2,700.0	0.00	0.00	2,700.0	0.0	0.0	0.0	0.00	0.00	0.00
2,800.0	0.00	0.00	2,800.0	0.0	0.0	0.0	0.00	0.00	0.00
2,900.0	0.00	0.00	2,900.0	0.0	0.0	0.0	0.00	0.00	0.00
3,000.0	0.00	0.00	3,000.0	0.0	0.0	0.0	0.00	0.00	0.00
3,100.0	0.00	0.00	3,100.0	0.0	0.0	0.0	0.00	0.00	0.00
3,200.0	0.00	0.00	3,200.0	0.0	0.0	0.0	0.00	0.00	0.00
3,300.0	0.00	0.00	3,300.0	0.0	0.0	0.0	0.00	0.00	0.00
3,400.0	0.00	0.00	3,400.0	0.0	0.0	0.0	0.00	0.00	0.00
3,500.0	0.00	0.00	3,500.0	0.0	0.0	0.0	0.00	0.00	0.00
3,600.0	0.00	0.00	3,600.0	0.0	0.0	0.0	0.00	0.00	0.00
3,700.0	0.00	0.00	3,700.0	0.0	0.0	0.0	0.00	0.00	0.00
3,800.0	0.00	0.00	3,800.0	0.0	0.0	0.0	0.00	0.00	0.00
3,900.0	0.00	0.00	3,900.0	0.0	0.0	0.0	0.00	0.00	0.00
4,000.0	0.00	0.00	4,000.0	0.0	0.0	0.0	0.00	0.00	0.00
4,100.0	0.00	0.00	4,100.0	0.0	0.0	0.0	0.00	0.00	0.00
4,200.0	0.00	0.00	4,200.0	0.0	0.0	0.0	0.00	0.00	0.00
4,300.0	0.00	0.00	4,300.0	0.0	0.0	0.0	0.00	0.00	0.00
4,400.0	0.00	0.00	4,400.0	0.0	0.0	0.0	0.00	0.00	0.00
4,500.0	0.00	0.00	4,500.0	0.0	0.0	0.0	0.00	0.00	0.00
4,600.0	0.00	0.00	4,600.0	0.0	0.0	0.0	0.00	0.00	0.00
4,700.0	0.00	0.00	4,700.0	0.0	0.0	0.0	0.00	0.00	0.00
4,800.0	0.00	0.00	4,800.0	0.0	0.0	0.0	0.00	0.00	0.00
4,900.0	0.00	0.00	4,900.0	0.0	0.0	0.0	0.00	0.00	0.00
5,000.0	0.00	0.00	5,000.0	0.0	0.0	0.0	0.00	0.00	0.00
5,100.0	0.00	0.00	5,100.0	0.0	0.0	0.0	0.00	0.00	0.00

# EOG Resources, Inc.

## Planning Report

<b>Database:</b>	EDM_DENVER	<b>Local Co-ordinate Reference:</b>	Well Fox Creek 525-2623H
<b>Company:</b>	Denver Division- Colorado	<b>TVD Reference:</b>	RKB @ 5445.0usft (KB GL+25')
<b>Project:</b>	DJ - Hereford Ranch	<b>MD Reference:</b>	RKB @ 5445.0usft (KB GL+25')
<b>Site:</b>	Fox Creek F26 SWSW Pad	<b>North Reference:</b>	True
<b>Well:</b>	Fox Creek 525-2623H	<b>Survey Calculation Method:</b>	Minimum Curvature
<b>Wellbore:</b>	OH		
<b>Design:</b>	APD Plan (Plat Cert 4/27/15)		

Planned Survey									
Measured Depth (usft)	Inclination (°)	Azimuth (°)	Vertical Depth (usft)	+N/-S (usft)	+E/-W (usft)	Vertical Section (usft)	Dogleg Rate (°/100usft)	Build Rate (°/100usft)	Turn Rate (°/100usft)
5,200.0	0.00	0.00	5,200.0	0.0	0.0	0.0	0.00	0.00	0.00
5,300.0	0.00	0.00	5,300.0	0.0	0.0	0.0	0.00	0.00	0.00
5,400.0	0.00	0.00	5,400.0	0.0	0.0	0.0	0.00	0.00	0.00
5,500.0	0.00	0.00	5,500.0	0.0	0.0	0.0	0.00	0.00	0.00
5,600.0	0.00	0.00	5,600.0	0.0	0.0	0.0	0.00	0.00	0.00
5,700.0	0.00	0.00	5,700.0	0.0	0.0	0.0	0.00	0.00	0.00
5,800.0	0.00	0.00	5,800.0	0.0	0.0	0.0	0.00	0.00	0.00
5,900.0	0.00	0.00	5,900.0	0.0	0.0	0.0	0.00	0.00	0.00
6,000.0	0.00	0.00	6,000.0	0.0	0.0	0.0	0.00	0.00	0.00
6,100.0	0.00	0.00	6,100.0	0.0	0.0	0.0	0.00	0.00	0.00
6,200.0	0.00	0.00	6,200.0	0.0	0.0	0.0	0.00	0.00	0.00
6,300.0	0.00	0.00	6,300.0	0.0	0.0	0.0	0.00	0.00	0.00
6,400.0	0.00	0.00	6,400.0	0.0	0.0	0.0	0.00	0.00	0.00
6,500.0	0.00	0.00	6,500.0	0.0	0.0	0.0	0.00	0.00	0.00
6,600.0	0.00	0.00	6,600.0	0.0	0.0	0.0	0.00	0.00	0.00
6,700.0	0.00	0.00	6,700.0	0.0	0.0	0.0	0.00	0.00	0.00
6,800.0	0.00	0.00	6,800.0	0.0	0.0	0.0	0.00	0.00	0.00
6,900.0	0.00	0.00	6,900.0	0.0	0.0	0.0	0.00	0.00	0.00
7,000.0	0.00	0.00	7,000.0	0.0	0.0	0.0	0.00	0.00	0.00
7,100.0	0.00	0.00	7,100.0	0.0	0.0	0.0	0.00	0.00	0.00
7,127.5	0.00	0.00	7,127.5	0.0	0.0	0.0	0.00	0.00	0.00
7,200.0	8.70	349.60	7,199.7	5.4	-1.0	5.4	12.00	12.00	0.00
7,300.0	20.70	349.60	7,296.3	30.3	-5.6	30.4	12.00	12.00	0.00
7,400.0	32.70	349.60	7,385.4	74.4	-13.7	74.6	12.00	12.00	0.00
7,500.0	44.70	349.60	7,463.3	135.8	-24.9	136.1	12.00	12.00	0.00
7,600.0	56.70	349.60	7,526.6	211.8	-38.9	212.3	12.00	12.00	0.00
7,700.0	68.70	349.60	7,572.3	299.0	-54.9	299.7	12.00	12.00	0.00
7,800.0	80.70	349.60	7,598.7	393.7	-72.3	394.6	12.00	12.00	0.00
7,877.5	90.00	349.60	7,605.0	469.6	-86.2	470.7	12.00	12.00	0.00
7,878.0	90.00	349.62	7,605.0	470.1	-86.3	471.2	3.00	0.00	3.00
7" Intermediate (Opt 2)									
7,900.0	90.00	350.28	7,605.0	491.8	-90.1	492.9	3.00	0.00	3.00
8,000.0	90.00	353.28	7,605.0	590.7	-104.4	592.0	3.00	0.00	3.00
8,100.0	90.00	356.28	7,605.0	690.3	-113.5	691.7	3.00	0.00	3.00
8,200.0	90.00	359.28	7,605.0	790.2	-117.4	791.6	3.00	0.00	3.00
8,224.1	90.00	360.00	7,605.0	814.3	-117.6	815.7	3.00	0.00	3.00
8,300.0	90.00	360.00	7,605.0	890.2	-117.6	891.6	0.00	0.00	0.00
8,400.0	90.00	360.00	7,605.0	990.2	-117.6	991.6	0.00	0.00	0.00
8,500.0	90.00	360.00	7,605.0	1,090.2	-117.6	1,091.6	0.00	0.00	0.00
8,600.0	90.00	360.00	7,605.0	1,190.2	-117.6	1,191.6	0.00	0.00	0.00
8,700.0	90.00	360.00	7,605.0	1,290.2	-117.6	1,291.6	0.00	0.00	0.00
8,800.0	90.00	360.00	7,605.0	1,390.2	-117.6	1,391.6	0.00	0.00	0.00
8,900.0	90.00	360.00	7,605.0	1,490.2	-117.6	1,491.6	0.00	0.00	0.00
9,000.0	90.00	360.00	7,605.0	1,590.2	-117.6	1,591.6	0.00	0.00	0.00
9,100.0	90.00	360.00	7,605.0	1,690.2	-117.6	1,691.6	0.00	0.00	0.00
9,200.0	90.00	360.00	7,605.0	1,790.2	-117.6	1,791.6	0.00	0.00	0.00
9,300.0	90.00	360.00	7,605.0	1,890.2	-117.6	1,891.6	0.00	0.00	0.00
9,400.0	90.00	360.00	7,605.0	1,990.2	-117.6	1,991.6	0.00	0.00	0.00
9,500.0	90.00	360.00	7,605.0	2,090.2	-117.6	2,091.5	0.00	0.00	0.00
9,600.0	90.00	360.00	7,605.0	2,190.2	-117.6	2,191.5	0.00	0.00	0.00
9,700.0	90.00	360.00	7,605.0	2,290.2	-117.6	2,291.5	0.00	0.00	0.00
9,800.0	90.00	360.00	7,605.0	2,390.2	-117.6	2,391.5	0.00	0.00	0.00
9,900.0	90.00	360.00	7,605.0	2,490.2	-117.6	2,491.5	0.00	0.00	0.00

# EOG Resources, Inc.

## Planning Report

<b>Database:</b>	EDM_DENVER	<b>Local Co-ordinate Reference:</b>	Well Fox Creek 525-2623H
<b>Company:</b>	Denver Division- Colorado	<b>TVD Reference:</b>	RKB @ 5445.0usft (KB GL+25')
<b>Project:</b>	DJ - Hereford Ranch	<b>MD Reference:</b>	RKB @ 5445.0usft (KB GL+25')
<b>Site:</b>	Fox Creek F26 SWSW Pad	<b>North Reference:</b>	True
<b>Well:</b>	Fox Creek 525-2623H	<b>Survey Calculation Method:</b>	Minimum Curvature
<b>Wellbore:</b>	OH		
<b>Design:</b>	APD Plan (Plat Cert 4/27/15)		

Planned Survey									
Measured Depth (usft)	Inclination (°)	Azimuth (°)	Vertical Depth (usft)	+N/-S (usft)	+E/-W (usft)	Vertical Section (usft)	Dogleg Rate (°/100usft)	Build Rate (°/100usft)	Turn Rate (°/100usft)
10,000.0	90.00	360.00	7,605.0	2,590.2	-117.6	2,591.5	0.00	0.00	0.00
10,100.0	90.00	360.00	7,605.0	2,690.2	-117.6	2,691.5	0.00	0.00	0.00
10,200.0	90.00	360.00	7,605.0	2,790.2	-117.6	2,791.5	0.00	0.00	0.00
10,300.0	90.00	360.00	7,605.0	2,890.2	-117.7	2,891.5	0.00	0.00	0.00
10,400.0	90.00	360.00	7,605.0	2,990.2	-117.7	2,991.5	0.00	0.00	0.00
10,500.0	90.00	360.00	7,605.0	3,090.2	-117.7	3,091.5	0.00	0.00	0.00
10,600.0	90.00	360.00	7,605.0	3,190.2	-117.7	3,191.5	0.00	0.00	0.00
10,700.0	90.00	360.00	7,605.0	3,290.2	-117.7	3,291.4	0.00	0.00	0.00
10,800.0	90.00	360.00	7,605.0	3,390.2	-117.7	3,391.4	0.00	0.00	0.00
10,900.0	90.00	360.00	7,605.0	3,490.2	-117.7	3,491.4	0.00	0.00	0.00
11,000.0	90.00	360.00	7,605.0	3,590.2	-117.7	3,591.4	0.00	0.00	0.00
11,100.0	90.00	360.00	7,605.0	3,690.2	-117.7	3,691.4	0.00	0.00	0.00
11,200.0	90.00	360.00	7,605.0	3,790.2	-117.7	3,791.4	0.00	0.00	0.00
11,300.0	90.00	360.00	7,605.0	3,890.2	-117.7	3,891.4	0.00	0.00	0.00
11,400.0	90.00	360.00	7,605.0	3,990.2	-117.7	3,991.4	0.00	0.00	0.00
11,500.0	90.00	360.00	7,605.0	4,090.2	-117.7	4,091.4	0.00	0.00	0.00
11,600.0	90.00	360.00	7,605.0	4,190.2	-117.7	4,191.4	0.00	0.00	0.00
11,700.0	90.00	360.00	7,605.0	4,290.2	-117.7	4,291.4	0.00	0.00	0.00
11,800.0	90.00	360.00	7,605.0	4,390.2	-117.7	4,391.4	0.00	0.00	0.00
11,900.0	90.00	360.00	7,605.0	4,490.2	-117.7	4,491.4	0.00	0.00	0.00
12,000.0	90.00	360.00	7,605.0	4,590.2	-117.7	4,591.3	0.00	0.00	0.00
12,100.0	90.00	360.00	7,605.0	4,690.2	-117.7	4,691.3	0.00	0.00	0.00
12,200.0	90.00	360.00	7,605.0	4,790.2	-117.7	4,791.3	0.00	0.00	0.00
12,300.0	90.00	360.00	7,605.0	4,890.2	-117.7	4,891.3	0.00	0.00	0.00
12,400.0	90.00	360.00	7,605.0	4,990.2	-117.7	4,991.3	0.00	0.00	0.00
12,500.0	90.00	360.00	7,605.0	5,090.2	-117.7	5,091.3	0.00	0.00	0.00
12,600.0	90.00	360.00	7,605.0	5,190.2	-117.7	5,191.3	0.00	0.00	0.00
12,700.0	90.00	360.00	7,605.0	5,290.2	-117.7	5,291.3	0.00	0.00	0.00
12,800.0	90.00	360.00	7,605.0	5,390.2	-117.8	5,391.3	0.00	0.00	0.00
12,900.0	90.00	360.00	7,605.0	5,490.2	-117.8	5,491.3	0.00	0.00	0.00
13,000.0	90.00	360.00	7,605.0	5,590.2	-117.8	5,591.3	0.00	0.00	0.00
13,100.0	90.00	360.00	7,605.0	5,690.2	-117.8	5,691.3	0.00	0.00	0.00
13,200.0	90.00	360.00	7,605.0	5,790.2	-117.8	5,791.2	0.00	0.00	0.00
13,300.0	90.00	360.00	7,605.0	5,890.2	-117.8	5,891.2	0.00	0.00	0.00
13,400.0	90.00	360.00	7,605.0	5,990.2	-117.8	5,991.2	0.00	0.00	0.00
13,500.0	90.00	360.00	7,605.0	6,090.2	-117.8	6,091.2	0.00	0.00	0.00
13,600.0	90.00	360.00	7,605.0	6,190.2	-117.8	6,191.2	0.00	0.00	0.00
13,700.0	90.00	360.00	7,605.0	6,290.2	-117.8	6,291.2	0.00	0.00	0.00
13,800.0	90.00	360.00	7,605.0	6,390.2	-117.8	6,391.2	0.00	0.00	0.00
13,900.0	90.00	360.00	7,605.0	6,490.2	-117.8	6,491.2	0.00	0.00	0.00
14,000.0	90.00	360.00	7,605.0	6,590.2	-117.8	6,591.2	0.00	0.00	0.00
14,100.0	90.00	360.00	7,605.0	6,690.2	-117.8	6,691.2	0.00	0.00	0.00
14,200.0	90.00	360.00	7,605.0	6,790.2	-117.8	6,791.2	0.00	0.00	0.00
14,300.0	90.00	360.00	7,605.0	6,890.2	-117.8	6,891.2	0.00	0.00	0.00
14,400.0	90.00	360.00	7,605.0	6,990.2	-117.8	6,991.2	0.00	0.00	0.00
14,500.0	90.00	360.00	7,605.0	7,090.2	-117.8	7,091.1	0.00	0.00	0.00
14,600.0	90.00	360.00	7,605.0	7,190.2	-117.8	7,191.1	0.00	0.00	0.00
14,700.0	90.00	360.00	7,605.0	7,290.2	-117.8	7,291.1	0.00	0.00	0.00
14,800.0	90.00	360.00	7,605.0	7,390.2	-117.8	7,391.1	0.00	0.00	0.00
14,900.0	90.00	360.00	7,605.0	7,490.2	-117.8	7,491.1	0.00	0.00	0.00
15,000.0	90.00	360.00	7,605.0	7,590.2	-117.8	7,591.1	0.00	0.00	0.00
15,100.0	90.00	360.00	7,605.0	7,690.2	-117.8	7,691.1	0.00	0.00	0.00
15,200.0	90.00	360.00	7,605.0	7,790.2	-117.9	7,791.1	0.00	0.00	0.00
15,300.0	90.00	360.00	7,605.0	7,890.2	-117.9	7,891.1	0.00	0.00	0.00

# EOG Resources, Inc.

## Planning Report

<b>Database:</b>	EDM_DENVER	<b>Local Co-ordinate Reference:</b>	Well Fox Creek 525-2623H
<b>Company:</b>	Denver Division- Colorado	<b>TVD Reference:</b>	RKB @ 5445.0usft (KB GL+25')
<b>Project:</b>	DJ - Hereford Ranch	<b>MD Reference:</b>	RKB @ 5445.0usft (KB GL+25')
<b>Site:</b>	Fox Creek F26 SWSW Pad	<b>North Reference:</b>	True
<b>Well:</b>	Fox Creek 525-2623H	<b>Survey Calculation Method:</b>	Minimum Curvature
<b>Wellbore:</b>	OH		
<b>Design:</b>	APD Plan (Plat Cert 4/27/15)		

Planned Survey										
Measured Depth (usft)	Inclination (°)	Azimuth (°)	Vertical Depth (usft)	+N/-S (usft)	+E/-W (usft)	Vertical Section (usft)	Dogleg Rate (°/100usft)	Build Rate (°/100usft)	Turn Rate (°/100usft)	
15,400.0	90.00	360.00	7,605.0	7,990.2	-117.9	7,991.1	0.00	0.00	0.00	
15,500.0	90.00	360.00	7,605.0	8,090.2	-117.9	8,091.1	0.00	0.00	0.00	
15,600.0	90.00	360.00	7,605.0	8,190.2	-117.9	8,191.1	0.00	0.00	0.00	
15,700.0	90.00	360.00	7,605.0	8,290.2	-117.9	8,291.0	0.00	0.00	0.00	
15,800.0	90.00	360.00	7,605.0	8,390.2	-117.9	8,391.0	0.00	0.00	0.00	
15,900.0	90.00	360.00	7,605.0	8,490.2	-117.9	8,491.0	0.00	0.00	0.00	
16,000.0	90.00	360.00	7,605.0	8,590.2	-117.9	8,591.0	0.00	0.00	0.00	
16,100.0	90.00	360.00	7,605.0	8,690.2	-117.9	8,691.0	0.00	0.00	0.00	
16,200.0	90.00	360.00	7,605.0	8,790.2	-117.9	8,791.0	0.00	0.00	0.00	
16,300.0	90.00	360.00	7,605.0	8,890.2	-117.9	8,891.0	0.00	0.00	0.00	
16,400.0	90.00	360.00	7,605.0	8,990.2	-117.9	8,991.0	0.00	0.00	0.00	
16,500.0	90.00	360.00	7,605.0	9,090.2	-117.9	9,091.0	0.00	0.00	0.00	
16,600.0	90.00	360.00	7,605.0	9,190.2	-117.9	9,191.0	0.00	0.00	0.00	
16,700.0	90.00	360.00	7,605.0	9,290.2	-117.9	9,291.0	0.00	0.00	0.00	
16,714.0	90.00	360.00	7,605.0	9,304.2	-117.9	9,305.0	0.00	0.00	0.00	
5 1/2" Prod (Opt 1) - 4 1/2" Liner (Opt 2)										
16,714.3	90.00	360.00	7,605.0	9,304.5	-117.9	9,305.3	0.00	0.00	0.00	

Design Targets										
Target Name	Dip Angle (°)	Dip Dir. (°)	TVD (usft)	+N/-S (usft)	+E/-W (usft)	Northing (usft)	Easting (usft)	Latitude	Longitude	
- hit/miss target										
- Shape										
Fox Creek 525-2623H P	0.00	0.00	7,605.0	9,304.5	-117.9	609,023.11	2,302,057.00	41° 0' 0.130 N	104° 24' 20.775 W	
- plan hits target center										
- Point										

Casing Points						
Measured Depth (usft)	Vertical Depth (usft)	Name	Casing Diameter (")	Hole Diameter (")		
1,345.0	1,345.0	9 5/8" Surface	9-5/8	13-1/2		
7,878.0	7,605.0	7" Intermediate (Opt 2)	7	8-3/4		
16,714.0	7,605.0	5 1/2" Prod (Opt 1)	5-1/2	8-3/4		
16,714.0	7,605.0	4 1/2" Liner (Opt 2)	4-1/2	6-1/8		