

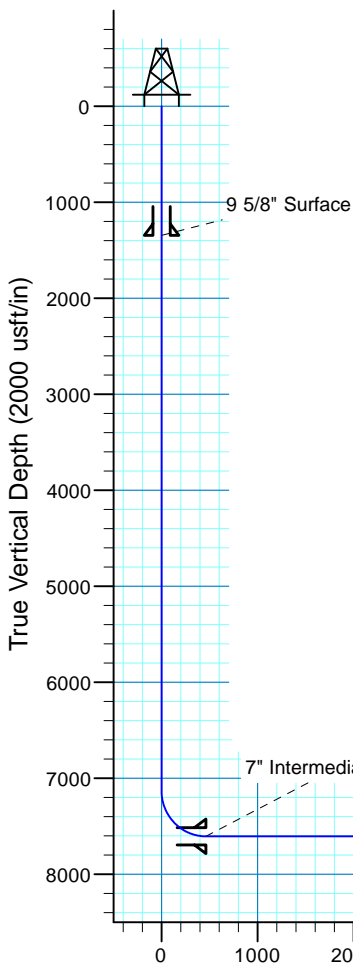


Fox Creek 524-2602H
Section 26-T12N-R63W
Weld County, CO

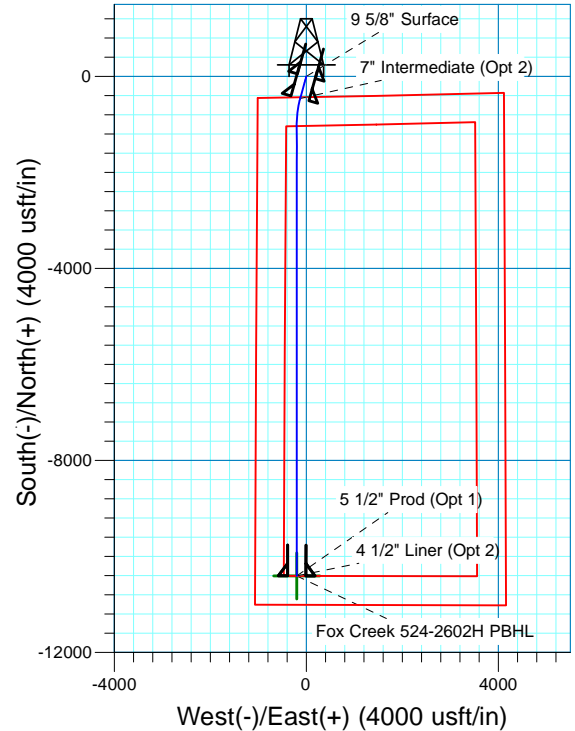
Surface Location

NAD 1927 (NADCON CONUS) Colorado North 501
Ground Elevation: 5420.0 RKB @ 5445.0usft (KB GL+25')
Northing Easting Latitude Longitude
599677.69 2302315.05 40° 58' 27.768 N 104° 24' 18.915 W

Project: DJ - Hereford Ranch
Site: Fox Creek F26 SWSW Pad
Well: Fox Creek 524-2602H
Plan: APD Plan (Plat Cert 4/27/15)



Vertical Section at 181.10° (2000 usft/in)



SECTION DETAILS

Sec	MD	Inc	Azi	TVD	+N/-S	+E/-W	Dleg	TFace	VSect	Target
1	0.0	0.00	0.00	0.0	0.0	0.0	0.00	0.00	0.0	
2	7128.0	0.00	0.00	7128.0	0.0	0.0	0.00	0.00	0.0	
3	7878.0	90.00	195.60	7605.5	-459.9	-128.4	12.00	195.60	462.2	
4	8397.9	90.00	180.00	7605.5	-973.4	-198.8	3.00	-90.00	977.0	Fox Creek 524-2602H PBHL
5	17830.7	90.00	180.00	7605.5	-10406.2	-199.1	0.00	0.00	10408.1	Fox Creek 524-2602H PBHL

TARGET DETAILS

Name	TVD	+N/-S	+E/-W	Northing	Easting	Latitude	Longitude	Shape
Fox Creek 524-2602H PBHL	7605.5	-10406.2	-199.1	589269.87	2302244.42	40° 56' 44.950 N	104° 24' 21.509 W	Point

Denver Division- Colorado

**DJ - Hereford Ranch
Fox Creek F26 SWSW Pad
Fox Creek 524-2602H**

OH

Plan: APD Plan (Plat Cert 4/27/15)

Standard Planning Report

30 June, 2015

EOG Resources, Inc.

Planning Report

Database:	EDM_DENVER	Local Co-ordinate Reference:	Well Fox Creek 524-2602H
Company:	Denver Division- Colorado	TVD Reference:	RKB @ 5445.0usft (KB GL+25')
Project:	DJ - Hereford Ranch	MD Reference:	RKB @ 5445.0usft (KB GL+25')
Site:	Fox Creek F26 SWSW Pad	North Reference:	True
Well:	Fox Creek 524-2602H	Survey Calculation Method:	Minimum Curvature
Wellbore:	OH		
Design:	APD Plan (Plat Cert 4/27/15)		

Project	DJ - Hereford Ranch, Weld County		
Map System:	US State Plane 1927 (Exact solution)	System Datum:	Mean Sea Level
Geo Datum:	NAD 1927 (NADCON CONUS)		
Map Zone:	Colorado North 501		

Site	Fox Creek F26 SWSW Pad		
Site Position:		Northing:	599,650.00 usft
From:	Map	Easting:	2,302,300.00 usft
Position Uncertainty:	0.0 usft	Slot Radius:	13-3/16 "
		Latitude:	40° 58' 27.497 N
		Longitude:	104° 24' 19.115 W
		Grid Convergence:	0.71 °

Well	Fox Creek 524-2602H		
Well Position	+N/-S	27.5 usft	Northing:
	+E/-W	15.4 usft	Easting:
Position Uncertainty	0.0 usft	Wellhead Elevation:	0.0 usft
		Latitude:	40° 58' 27.768 N
		Longitude:	104° 24' 18.915 W
		Ground Level:	5,420.0 usft

Wellbore	OH		
Magnetics	Model Name	Sample Date	Declination
			(°)
	IGRF2015	6/30/2015	8.27
			Dip Angle
			(°)
			67.42
			Field Strength
			(nT)
			52,946

Design	APD Plan (Plat Cert 4/27/15)		
Audit Notes:			
Version:	Phase:	PROTOTYPE	Tie On Depth:
			0.0
Vertical Section:	Depth From (TVD)	+N/-S	+E/-W
	(usft)	(usft)	(usft)
	0.0	0.0	0.0
			Direction
			(°)
			181.10

Plan Sections										
Measured	Inclination	Azimuth	Vertical	+N/-S	+E/-W	Dogleg	Build	Turn	TFO	Target
Depth	(°)	(°)	Depth	(usft)	(usft)	Rate	Rate	Rate	(°)	
(usft)			(usft)			(°/100usft)	(°/100usft)	(°/100usft)		
0.0	0.00	0.00	0.0	0.0	0.0	0.00	0.00	0.00	0.00	
7,128.0	0.00	0.00	7,128.0	0.0	0.0	0.00	0.00	0.00	0.00	
7,878.0	90.00	195.60	7,605.5	-459.9	-128.4	12.00	12.00	0.00	195.60	
8,397.9	90.00	180.00	7,605.5	-973.4	-198.8	3.00	0.00	-3.00	-90.00	Fox Creek 524-2602H
17,830.7	90.00	180.00	7,605.5	-10,406.2	-199.1	0.00	0.00	0.00	0.00	Fox Creek 524-2602H

EOG Resources, Inc.

Planning Report

Database:	EDM_DENVER	Local Co-ordinate Reference:	Well Fox Creek 524-2602H
Company:	Denver Division- Colorado	TVD Reference:	RKB @ 5445.0usft (KB GL+25')
Project:	DJ - Hereford Ranch	MD Reference:	RKB @ 5445.0usft (KB GL+25')
Site:	Fox Creek F26 SWSW Pad	North Reference:	True
Well:	Fox Creek 524-2602H	Survey Calculation Method:	Minimum Curvature
Wellbore:	OH		
Design:	APD Plan (Plat Cert 4/27/15)		

Planned Survey									
Measured Depth (usft)	Inclination (°)	Azimuth (°)	Vertical Depth (usft)	+N/-S (usft)	+E/-W (usft)	Vertical Section (usft)	Dogleg Rate (°/100usft)	Build Rate (°/100usft)	Turn Rate (°/100usft)
0.0	0.00	0.00	0.0	0.0	0.0	0.0	0.00	0.00	0.00
100.0	0.00	0.00	100.0	0.0	0.0	0.0	0.00	0.00	0.00
200.0	0.00	0.00	200.0	0.0	0.0	0.0	0.00	0.00	0.00
300.0	0.00	0.00	300.0	0.0	0.0	0.0	0.00	0.00	0.00
400.0	0.00	0.00	400.0	0.0	0.0	0.0	0.00	0.00	0.00
500.0	0.00	0.00	500.0	0.0	0.0	0.0	0.00	0.00	0.00
600.0	0.00	0.00	600.0	0.0	0.0	0.0	0.00	0.00	0.00
700.0	0.00	0.00	700.0	0.0	0.0	0.0	0.00	0.00	0.00
800.0	0.00	0.00	800.0	0.0	0.0	0.0	0.00	0.00	0.00
900.0	0.00	0.00	900.0	0.0	0.0	0.0	0.00	0.00	0.00
1,000.0	0.00	0.00	1,000.0	0.0	0.0	0.0	0.00	0.00	0.00
1,100.0	0.00	0.00	1,100.0	0.0	0.0	0.0	0.00	0.00	0.00
1,200.0	0.00	0.00	1,200.0	0.0	0.0	0.0	0.00	0.00	0.00
1,300.0	0.00	0.00	1,300.0	0.0	0.0	0.0	0.00	0.00	0.00
1,345.0	0.00	0.00	1,345.0	0.0	0.0	0.0	0.00	0.00	0.00
9 5/8" Surface									
1,400.0	0.00	0.00	1,400.0	0.0	0.0	0.0	0.00	0.00	0.00
1,500.0	0.00	0.00	1,500.0	0.0	0.0	0.0	0.00	0.00	0.00
1,600.0	0.00	0.00	1,600.0	0.0	0.0	0.0	0.00	0.00	0.00
1,700.0	0.00	0.00	1,700.0	0.0	0.0	0.0	0.00	0.00	0.00
1,800.0	0.00	0.00	1,800.0	0.0	0.0	0.0	0.00	0.00	0.00
1,900.0	0.00	0.00	1,900.0	0.0	0.0	0.0	0.00	0.00	0.00
2,000.0	0.00	0.00	2,000.0	0.0	0.0	0.0	0.00	0.00	0.00
2,100.0	0.00	0.00	2,100.0	0.0	0.0	0.0	0.00	0.00	0.00
2,200.0	0.00	0.00	2,200.0	0.0	0.0	0.0	0.00	0.00	0.00
2,300.0	0.00	0.00	2,300.0	0.0	0.0	0.0	0.00	0.00	0.00
2,400.0	0.00	0.00	2,400.0	0.0	0.0	0.0	0.00	0.00	0.00
2,500.0	0.00	0.00	2,500.0	0.0	0.0	0.0	0.00	0.00	0.00
2,600.0	0.00	0.00	2,600.0	0.0	0.0	0.0	0.00	0.00	0.00
2,700.0	0.00	0.00	2,700.0	0.0	0.0	0.0	0.00	0.00	0.00
2,800.0	0.00	0.00	2,800.0	0.0	0.0	0.0	0.00	0.00	0.00
2,900.0	0.00	0.00	2,900.0	0.0	0.0	0.0	0.00	0.00	0.00
3,000.0	0.00	0.00	3,000.0	0.0	0.0	0.0	0.00	0.00	0.00
3,100.0	0.00	0.00	3,100.0	0.0	0.0	0.0	0.00	0.00	0.00
3,200.0	0.00	0.00	3,200.0	0.0	0.0	0.0	0.00	0.00	0.00
3,300.0	0.00	0.00	3,300.0	0.0	0.0	0.0	0.00	0.00	0.00
3,400.0	0.00	0.00	3,400.0	0.0	0.0	0.0	0.00	0.00	0.00
3,500.0	0.00	0.00	3,500.0	0.0	0.0	0.0	0.00	0.00	0.00
3,600.0	0.00	0.00	3,600.0	0.0	0.0	0.0	0.00	0.00	0.00
3,700.0	0.00	0.00	3,700.0	0.0	0.0	0.0	0.00	0.00	0.00
3,800.0	0.00	0.00	3,800.0	0.0	0.0	0.0	0.00	0.00	0.00
3,900.0	0.00	0.00	3,900.0	0.0	0.0	0.0	0.00	0.00	0.00
4,000.0	0.00	0.00	4,000.0	0.0	0.0	0.0	0.00	0.00	0.00
4,100.0	0.00	0.00	4,100.0	0.0	0.0	0.0	0.00	0.00	0.00
4,200.0	0.00	0.00	4,200.0	0.0	0.0	0.0	0.00	0.00	0.00
4,300.0	0.00	0.00	4,300.0	0.0	0.0	0.0	0.00	0.00	0.00
4,400.0	0.00	0.00	4,400.0	0.0	0.0	0.0	0.00	0.00	0.00
4,500.0	0.00	0.00	4,500.0	0.0	0.0	0.0	0.00	0.00	0.00
4,600.0	0.00	0.00	4,600.0	0.0	0.0	0.0	0.00	0.00	0.00
4,700.0	0.00	0.00	4,700.0	0.0	0.0	0.0	0.00	0.00	0.00
4,800.0	0.00	0.00	4,800.0	0.0	0.0	0.0	0.00	0.00	0.00
4,900.0	0.00	0.00	4,900.0	0.0	0.0	0.0	0.00	0.00	0.00
5,000.0	0.00	0.00	5,000.0	0.0	0.0	0.0	0.00	0.00	0.00
5,100.0	0.00	0.00	5,100.0	0.0	0.0	0.0	0.00	0.00	0.00

EOG Resources, Inc.

Planning Report

Database:	EDM_DENVER	Local Co-ordinate Reference:	Well Fox Creek 524-2602H
Company:	Denver Division- Colorado	TVD Reference:	RKB @ 5445.0usft (KB GL+25')
Project:	DJ - Hereford Ranch	MD Reference:	RKB @ 5445.0usft (KB GL+25')
Site:	Fox Creek F26 SWSW Pad	North Reference:	True
Well:	Fox Creek 524-2602H	Survey Calculation Method:	Minimum Curvature
Wellbore:	OH		
Design:	APD Plan (Plat Cert 4/27/15)		

Planned Survey									
Measured Depth (usft)	Inclination (°)	Azimuth (°)	Vertical Depth (usft)	+N/-S (usft)	+E/-W (usft)	Vertical Section (usft)	Dogleg Rate (°/100usft)	Build Rate (°/100usft)	Turn Rate (°/100usft)
5,200.0	0.00	0.00	5,200.0	0.0	0.0	0.0	0.00	0.00	0.00
5,300.0	0.00	0.00	5,300.0	0.0	0.0	0.0	0.00	0.00	0.00
5,400.0	0.00	0.00	5,400.0	0.0	0.0	0.0	0.00	0.00	0.00
5,500.0	0.00	0.00	5,500.0	0.0	0.0	0.0	0.00	0.00	0.00
5,600.0	0.00	0.00	5,600.0	0.0	0.0	0.0	0.00	0.00	0.00
5,700.0	0.00	0.00	5,700.0	0.0	0.0	0.0	0.00	0.00	0.00
5,800.0	0.00	0.00	5,800.0	0.0	0.0	0.0	0.00	0.00	0.00
5,900.0	0.00	0.00	5,900.0	0.0	0.0	0.0	0.00	0.00	0.00
6,000.0	0.00	0.00	6,000.0	0.0	0.0	0.0	0.00	0.00	0.00
6,100.0	0.00	0.00	6,100.0	0.0	0.0	0.0	0.00	0.00	0.00
6,200.0	0.00	0.00	6,200.0	0.0	0.0	0.0	0.00	0.00	0.00
6,300.0	0.00	0.00	6,300.0	0.0	0.0	0.0	0.00	0.00	0.00
6,400.0	0.00	0.00	6,400.0	0.0	0.0	0.0	0.00	0.00	0.00
6,500.0	0.00	0.00	6,500.0	0.0	0.0	0.0	0.00	0.00	0.00
6,600.0	0.00	0.00	6,600.0	0.0	0.0	0.0	0.00	0.00	0.00
6,700.0	0.00	0.00	6,700.0	0.0	0.0	0.0	0.00	0.00	0.00
6,800.0	0.00	0.00	6,800.0	0.0	0.0	0.0	0.00	0.00	0.00
6,900.0	0.00	0.00	6,900.0	0.0	0.0	0.0	0.00	0.00	0.00
7,000.0	0.00	0.00	7,000.0	0.0	0.0	0.0	0.00	0.00	0.00
7,100.0	0.00	0.00	7,100.0	0.0	0.0	0.0	0.00	0.00	0.00
7,128.0	0.00	0.00	7,128.0	0.0	0.0	0.0	0.00	0.00	0.00
7,200.0	8.64	195.60	7,199.7	-5.2	-1.5	5.2	12.00	12.00	0.00
7,300.0	20.64	195.60	7,296.3	-29.5	-8.2	29.7	12.00	12.00	0.00
7,400.0	32.64	195.60	7,385.5	-72.6	-20.3	73.0	12.00	12.00	0.00
7,500.0	44.64	195.60	7,463.5	-132.7	-37.0	133.3	12.00	12.00	0.00
7,600.0	56.64	195.60	7,526.8	-207.0	-57.8	208.1	12.00	12.00	0.00
7,700.0	68.64	195.60	7,572.7	-292.4	-81.6	293.9	12.00	12.00	0.00
7,800.0	80.64	195.60	7,599.1	-385.1	-107.5	387.1	12.00	12.00	0.00
7,878.0	90.00	195.60	7,605.5	-459.9	-128.4	462.2	12.00	12.00	0.00
7" Intermediate (Opt 2)									
7,900.0	90.00	194.94	7,605.5	-481.1	-134.2	483.6	3.00	0.00	-3.00
8,000.0	90.00	191.94	7,605.5	-578.3	-157.4	581.3	3.00	0.00	-3.00
8,100.0	90.00	188.94	7,605.5	-676.7	-175.6	679.9	3.00	0.00	-3.00
8,200.0	90.00	185.94	7,605.5	-775.8	-188.5	779.3	3.00	0.00	-3.00
8,300.0	90.00	182.94	7,605.5	-875.5	-196.2	879.1	3.00	0.00	-3.00
8,397.9	90.00	180.00	7,605.5	-973.4	-198.8	977.0	3.00	0.00	-3.00
8,400.0	90.00	180.00	7,605.5	-975.5	-198.8	979.1	0.00	0.00	0.00
8,500.0	90.00	180.00	7,605.5	-1,075.5	-198.8	1,079.1	0.00	0.00	0.00
8,600.0	90.00	180.00	7,605.5	-1,175.5	-198.8	1,179.1	0.00	0.00	0.00
8,700.0	90.00	180.00	7,605.5	-1,275.5	-198.8	1,279.0	0.00	0.00	0.00
8,800.0	90.00	180.00	7,605.5	-1,375.5	-198.8	1,379.0	0.00	0.00	0.00
8,900.0	90.00	180.00	7,605.5	-1,475.5	-198.8	1,479.0	0.00	0.00	0.00
9,000.0	90.00	180.00	7,605.5	-1,575.5	-198.8	1,579.0	0.00	0.00	0.00
9,100.0	90.00	180.00	7,605.5	-1,675.5	-198.8	1,679.0	0.00	0.00	0.00
9,200.0	90.00	180.00	7,605.5	-1,775.5	-198.8	1,779.0	0.00	0.00	0.00
9,300.0	90.00	180.00	7,605.5	-1,875.5	-198.8	1,878.9	0.00	0.00	0.00
9,400.0	90.00	180.00	7,605.5	-1,975.5	-198.8	1,978.9	0.00	0.00	0.00
9,500.0	90.00	180.00	7,605.5	-2,075.5	-198.8	2,078.9	0.00	0.00	0.00
9,600.0	90.00	180.00	7,605.5	-2,175.5	-198.8	2,178.9	0.00	0.00	0.00
9,700.0	90.00	180.00	7,605.5	-2,275.5	-198.8	2,278.9	0.00	0.00	0.00
9,800.0	90.00	180.00	7,605.5	-2,375.5	-198.8	2,378.8	0.00	0.00	0.00
9,900.0	90.00	180.00	7,605.5	-2,475.5	-198.8	2,478.8	0.00	0.00	0.00
10,000.0	90.00	180.00	7,605.5	-2,575.5	-198.8	2,578.8	0.00	0.00	0.00

EOG Resources, Inc.

Planning Report

Database:	EDM_DENVER	Local Co-ordinate Reference:	Well Fox Creek 524-2602H
Company:	Denver Division- Colorado	TVD Reference:	RKB @ 5445.0usft (KB GL+25')
Project:	DJ - Hereford Ranch	MD Reference:	RKB @ 5445.0usft (KB GL+25')
Site:	Fox Creek F26 SWSW Pad	North Reference:	True
Well:	Fox Creek 524-2602H	Survey Calculation Method:	Minimum Curvature
Wellbore:	OH		
Design:	APD Plan (Plat Cert 4/27/15)		

Planned Survey									
Measured Depth (usft)	Inclination (°)	Azimuth (°)	Vertical Depth (usft)	+N/-S (usft)	+E/-W (usft)	Vertical Section (usft)	Dogleg Rate (°/100usft)	Build Rate (°/100usft)	Turn Rate (°/100usft)
10,100.0	90.00	180.00	7,605.5	-2,675.5	-198.8	2,678.8	0.00	0.00	0.00
10,200.0	90.00	180.00	7,605.5	-2,775.5	-198.8	2,778.8	0.00	0.00	0.00
10,300.0	90.00	180.00	7,605.5	-2,875.5	-198.8	2,878.8	0.00	0.00	0.00
10,400.0	90.00	180.00	7,605.5	-2,975.5	-198.8	2,978.7	0.00	0.00	0.00
10,500.0	90.00	180.00	7,605.5	-3,075.5	-198.8	3,078.7	0.00	0.00	0.00
10,600.0	90.00	180.00	7,605.5	-3,175.5	-198.8	3,178.7	0.00	0.00	0.00
10,700.0	90.00	180.00	7,605.5	-3,275.5	-198.8	3,278.7	0.00	0.00	0.00
10,800.0	90.00	180.00	7,605.5	-3,375.5	-198.8	3,378.7	0.00	0.00	0.00
10,900.0	90.00	180.00	7,605.5	-3,475.5	-198.8	3,478.6	0.00	0.00	0.00
11,000.0	90.00	180.00	7,605.5	-3,575.5	-198.9	3,578.6	0.00	0.00	0.00
11,100.0	90.00	180.00	7,605.5	-3,675.5	-198.9	3,678.6	0.00	0.00	0.00
11,200.0	90.00	180.00	7,605.5	-3,775.5	-198.9	3,778.6	0.00	0.00	0.00
11,300.0	90.00	180.00	7,605.5	-3,875.5	-198.9	3,878.6	0.00	0.00	0.00
11,400.0	90.00	180.00	7,605.5	-3,975.5	-198.9	3,978.6	0.00	0.00	0.00
11,500.0	90.00	180.00	7,605.5	-4,075.5	-198.9	4,078.5	0.00	0.00	0.00
11,600.0	90.00	180.00	7,605.5	-4,175.5	-198.9	4,178.5	0.00	0.00	0.00
11,700.0	90.00	180.00	7,605.5	-4,275.5	-198.9	4,278.5	0.00	0.00	0.00
11,800.0	90.00	180.00	7,605.5	-4,375.5	-198.9	4,378.5	0.00	0.00	0.00
11,900.0	90.00	180.00	7,605.5	-4,475.5	-198.9	4,478.5	0.00	0.00	0.00
12,000.0	90.00	180.00	7,605.5	-4,575.5	-198.9	4,578.4	0.00	0.00	0.00
12,100.0	90.00	180.00	7,605.5	-4,675.5	-198.9	4,678.4	0.00	0.00	0.00
12,200.0	90.00	180.00	7,605.5	-4,775.5	-198.9	4,778.4	0.00	0.00	0.00
12,300.0	90.00	180.00	7,605.5	-4,875.5	-198.9	4,878.4	0.00	0.00	0.00
12,400.0	90.00	180.00	7,605.5	-4,975.5	-198.9	4,978.4	0.00	0.00	0.00
12,500.0	90.00	180.00	7,605.5	-5,075.5	-198.9	5,078.4	0.00	0.00	0.00
12,600.0	90.00	180.00	7,605.5	-5,175.5	-198.9	5,178.3	0.00	0.00	0.00
12,700.0	90.00	180.00	7,605.5	-5,275.5	-198.9	5,278.3	0.00	0.00	0.00
12,800.0	90.00	180.00	7,605.5	-5,375.5	-198.9	5,378.3	0.00	0.00	0.00
12,900.0	90.00	180.00	7,605.5	-5,475.5	-198.9	5,478.3	0.00	0.00	0.00
13,000.0	90.00	180.00	7,605.5	-5,575.5	-198.9	5,578.3	0.00	0.00	0.00
13,100.0	90.00	180.00	7,605.5	-5,675.5	-198.9	5,678.2	0.00	0.00	0.00
13,200.0	90.00	180.00	7,605.5	-5,775.5	-198.9	5,778.2	0.00	0.00	0.00
13,300.0	90.00	180.00	7,605.5	-5,875.5	-198.9	5,878.2	0.00	0.00	0.00
13,400.0	90.00	180.00	7,605.5	-5,975.5	-198.9	5,978.2	0.00	0.00	0.00
13,500.0	90.00	180.00	7,605.5	-6,075.5	-198.9	6,078.2	0.00	0.00	0.00
13,600.0	90.00	180.00	7,605.5	-6,175.5	-199.0	6,178.2	0.00	0.00	0.00
13,700.0	90.00	180.00	7,605.5	-6,275.5	-199.0	6,278.1	0.00	0.00	0.00
13,800.0	90.00	180.00	7,605.5	-6,375.5	-199.0	6,378.1	0.00	0.00	0.00
13,900.0	90.00	180.00	7,605.5	-6,475.5	-199.0	6,478.1	0.00	0.00	0.00
14,000.0	90.00	180.00	7,605.5	-6,575.5	-199.0	6,578.1	0.00	0.00	0.00
14,100.0	90.00	180.00	7,605.5	-6,675.5	-199.0	6,678.1	0.00	0.00	0.00
14,200.0	90.00	180.00	7,605.5	-6,775.5	-199.0	6,778.0	0.00	0.00	0.00
14,300.0	90.00	180.00	7,605.5	-6,875.5	-199.0	6,878.0	0.00	0.00	0.00
14,400.0	90.00	180.00	7,605.5	-6,975.5	-199.0	6,978.0	0.00	0.00	0.00
14,500.0	90.00	180.00	7,605.5	-7,075.5	-199.0	7,078.0	0.00	0.00	0.00
14,600.0	90.00	180.00	7,605.5	-7,175.5	-199.0	7,178.0	0.00	0.00	0.00
14,700.0	90.00	180.00	7,605.5	-7,275.5	-199.0	7,278.0	0.00	0.00	0.00
14,800.0	90.00	180.00	7,605.5	-7,375.5	-199.0	7,377.9	0.00	0.00	0.00
14,900.0	90.00	180.00	7,605.5	-7,475.5	-199.0	7,477.9	0.00	0.00	0.00
15,000.0	90.00	180.00	7,605.5	-7,575.5	-199.0	7,577.9	0.00	0.00	0.00
15,100.0	90.00	180.00	7,605.5	-7,675.5	-199.0	7,677.9	0.00	0.00	0.00
15,200.0	90.00	180.00	7,605.5	-7,775.5	-199.0	7,777.9	0.00	0.00	0.00
15,300.0	90.00	180.00	7,605.5	-7,875.5	-199.0	7,877.8	0.00	0.00	0.00
15,400.0	90.00	180.00	7,605.5	-7,975.5	-199.0	7,977.8	0.00	0.00	0.00

EOG Resources, Inc.

Planning Report

Database:	EDM_DENVER	Local Co-ordinate Reference:	Well Fox Creek 524-2602H
Company:	Denver Division- Colorado	TVD Reference:	RKB @ 5445.0usft (KB GL+25')
Project:	DJ - Hereford Ranch	MD Reference:	RKB @ 5445.0usft (KB GL+25')
Site:	Fox Creek F26 SWSW Pad	North Reference:	True
Well:	Fox Creek 524-2602H	Survey Calculation Method:	Minimum Curvature
Wellbore:	OH		
Design:	APD Plan (Plat Cert 4/27/15)		

Planned Survey										
Measured Depth (usft)	Inclination (°)	Azimuth (°)	Vertical Depth (usft)	+N/-S (usft)	+E/-W (usft)	Vertical Section (usft)	Dogleg Rate (°/100usft)	Build Rate (°/100usft)	Turn Rate (°/100usft)	
15,500.0	90.00	180.00	7,605.5	-8,075.5	-199.0	8,077.8	0.00	0.00	0.00	
15,600.0	90.00	180.00	7,605.5	-8,175.5	-199.0	8,177.8	0.00	0.00	0.00	
15,700.0	90.00	180.00	7,605.5	-8,275.5	-199.0	8,277.8	0.00	0.00	0.00	
15,800.0	90.00	180.00	7,605.5	-8,375.5	-199.0	8,377.8	0.00	0.00	0.00	
15,900.0	90.00	180.00	7,605.5	-8,475.5	-199.0	8,477.7	0.00	0.00	0.00	
16,000.0	90.00	180.00	7,605.5	-8,575.5	-199.0	8,577.7	0.00	0.00	0.00	
16,100.0	90.00	180.00	7,605.5	-8,675.5	-199.0	8,677.7	0.00	0.00	0.00	
16,200.0	90.00	180.00	7,605.5	-8,775.5	-199.1	8,777.7	0.00	0.00	0.00	
16,300.0	90.00	180.00	7,605.5	-8,875.5	-199.1	8,877.7	0.00	0.00	0.00	
16,400.0	90.00	180.00	7,605.5	-8,975.5	-199.1	8,977.6	0.00	0.00	0.00	
16,500.0	90.00	180.00	7,605.5	-9,075.5	-199.1	9,077.6	0.00	0.00	0.00	
16,600.0	90.00	180.00	7,605.5	-9,175.5	-199.1	9,177.6	0.00	0.00	0.00	
16,700.0	90.00	180.00	7,605.5	-9,275.5	-199.1	9,277.6	0.00	0.00	0.00	
16,800.0	90.00	180.00	7,605.5	-9,375.5	-199.1	9,377.6	0.00	0.00	0.00	
16,900.0	90.00	180.00	7,605.5	-9,475.5	-199.1	9,477.5	0.00	0.00	0.00	
17,000.0	90.00	180.00	7,605.5	-9,575.5	-199.1	9,577.5	0.00	0.00	0.00	
17,100.0	90.00	180.00	7,605.5	-9,675.5	-199.1	9,677.5	0.00	0.00	0.00	
17,200.0	90.00	180.00	7,605.5	-9,775.5	-199.1	9,777.5	0.00	0.00	0.00	
17,300.0	90.00	180.00	7,605.5	-9,875.5	-199.1	9,877.5	0.00	0.00	0.00	
17,400.0	90.00	180.00	7,605.5	-9,975.5	-199.1	9,977.5	0.00	0.00	0.00	
17,500.0	90.00	180.00	7,605.5	-10,075.5	-199.1	10,077.4	0.00	0.00	0.00	
17,600.0	90.00	180.00	7,605.5	-10,175.5	-199.1	10,177.4	0.00	0.00	0.00	
17,700.0	90.00	180.00	7,605.5	-10,275.5	-199.1	10,277.4	0.00	0.00	0.00	
17,800.0	90.00	180.00	7,605.5	-10,375.5	-199.1	10,377.4	0.00	0.00	0.00	
17,830.0	90.00	180.00	7,605.5	-10,405.5	-199.1	10,407.4	0.00	0.00	0.00	
5 1/2" Prod (Opt 1) - 4 1/2" Liner (Opt 2)										
17,830.7	90.00	180.00	7,605.5	-10,406.2	-199.1	10,408.1	0.00	0.00	0.00	

Design Targets										
Target Name	Dip Angle (°)	Dip Dir. (°)	TVD (usft)	+N/-S (usft)	+E/-W (usft)	Northing (usft)	Easting (usft)	Latitude	Longitude	
- hit/miss target										
- Shape										
Fox Creek 524-2602H P	0.00	0.00	7,605.0	-10,406.2	-199.1	589,269.87	2,302,244.42	40° 56' 44.950 N	104° 24' 21.509 W	
- plan misses target center by 0.5usft at 17830.7usft MD (7605.5 TVD, -10406.2 N, -199.1 E)										
- Point										

Casing Points						
Measured Depth (usft)	Vertical Depth (usft)	Name	Casing Diameter (")	Hole Diameter (")		
1,345.0	1,345.0	9 5/8" Surface	9-5/8	13-1/2		
7,878.0	7,605.5	7" Intermediate (Opt 2)	7	8-3/4		
17,830.0	7,605.5	5 1/2" Prod (Opt 1)	5-1/2	8-3/4		
17,830.0	7,605.5	4 1/2" Liner (Opt 2)	4-1/2	6-1/8		