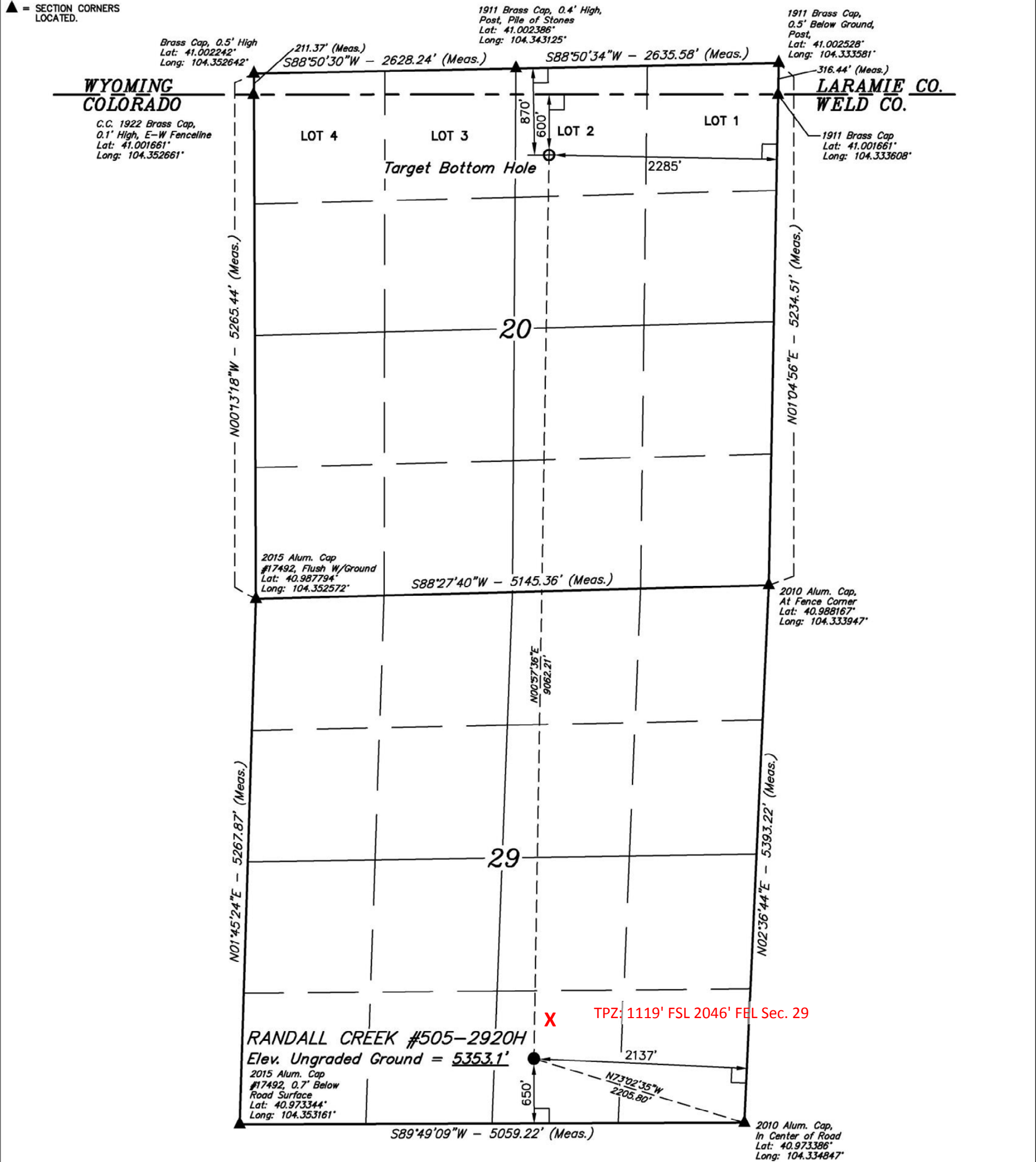


LEGEND:

- = 90° SYMBOL  
● = PROPOSED WELLHEAD.  
○ = TARGET BOTTOM HOLE.  
▲ = SECTION CORNERS LOCATED.

T12N, R62W, 6th P.M.



PDOP = 1.5	
NAD 83 (TARGET BOTTOM HOLE)	NAD 83 (SURFACE LOCATION)
LATITUDE = 41°00'00.05" (41.000014)	LATITUDE = 40°58'30.55" (40.975153)
LONGITUDE = 104°20'30.92" (104.341922)	LONGITUDE = 104°20'32.94" (104.342483)
NAD 27 (TARGET BOTTOM HOLE)	NAD 27 (SURFACE LOCATION)
LATITUDE = 41°00'00.11" (41.000031)	LATITUDE = 40°58'30.61" (40.975169)
LONGITUDE = 104°20'29.08" (104.341411)	LONGITUDE = 104°20'31.11" (104.341975)
STATE PLANE NAD 83 (CO. NORTH)	STATE PLANE NAD 83 (CO. NORTH)
N: 1609249.69 E: 3319672.60	N: 1600189.52 E: 3319635.84
STATE PLANE NAD 27 (CO. NORTH)	STATE PLANE NAD 27 (CO. NORTH)
N: 609247.08 E: 2319822.09	N: 600187.06 E: 2319785.26

BASIS OF BEARINGS  
BASIS OF BEARINGS IS A G.P.S. OBSERVATION  
BASIS OF ELEVATION

SPOT ELEVATION LOCATED AT THE NORTHEAST CORNER OF SECTION 1, T11N, R63W, 6th P.M. TAKEN FROM THE HERFORD, QUADRANGLE, COLORADO, WELD COUNTY, 7.5 MINUTE QUAD (TOPOGRAPHIC MAP) PUBLISHED BY THE UNITED STATES DEPARTMENT OF THE INTERIOR, GEOLOGICAL SURVEY. SAID ELEVATION IS MARKED AS BEING 5352 FEET.



UELS, LLC  
Corporate Office \* 85 South 200 East  
Vernal, UT 84078 \* (435) 789-1017



CERTIFICATE  
THIS IS TO CERTIFY THAT THE ABOVE PLAT WAS PREPARED FROM FIELD NOTES OF ACTUAL SURVEYS MADE BY ME OR UNDER MY SUPERVISION AND THAT THE SAME ARE TRUE AND CORRECT TO THE BEST OF MY KNOWLEDGE AND BELIEF.  
GREG WEIMER, C.J.  
REGISTERED LAND SURVEYOR  
REGISTRATION NO. 28285  
STATE OF COLORADO 05-27-15

EOG RESOURCES, INC.

RANDALL CREEK #505-2920H  
SW 1/4 SE 1/4, SECTION 29, T12N, R62W, 6th P.M.  
WELD COUNTY, COLORADO

SURVEYED BY: GREG WEIMER, C.J.	DATE: 05-07-15
DRAWN BY: C.D.L.	DATE DRAWN: 05-14-15
SCALE: 1" = 1000'	REVISED: 00-00-00

WELL LOCATION PLAT