

# LEGEND:

- = 90° SYMBOL
- = PROPOSED WELLHEAD.
- = TARGET BOTTOM HOLE.
- = PROPOSED TOP OF PRODUCTION
- = SECTION CORNERS LOCATED.

## T10N, R58W, 6th P.M.

Target  
 Bottom Hole

R  
58  
W

R  
57  
W  
1917 Brass Cap,  
1.0' High  
Lat: 40.817086°  
Long: 103.803497°

2012 Alum. Cap,  
0.4' High  
Lat: 40.817031°  
Long: 103.813158°

Proposed Top  
of Production

N89°33'18"E  
2674.93' (Meas.)

N89°33'18"E - 2674.93' (Meas.)

2010 Alum. Cap,  
0.3' High, N/E Fence  
Lat: 40.816975°  
Long: 103.822819°

**RAZOR #25B-2449**  
Elev. Graded  
Ground = 4756.7'

2089'

LINE TABLE		
LINE	DIRECTION	LENGTH
L1	N57°46'47"W	710.16'

25

NOTE:  
THE PROPOSED TOP OF PRODUCTION FOR  
THIS WELL IS LOCATED IN THE SE 1/4 SW  
1/4 OF SECTION 24, T10N, R58W, 6th P.M.  
AT 104' FSL 2664' FWL. IT BEARS  
N57°46'47"W 710.16' FROM THE PROPOSED  
WELLHEAD.

2012 Alum. Cap,  
0.1 High  
Lat: 40.809672°  
Long: 103.822617°

2012 Alum. Cap,  
Flush W/Ground  
Lat: 40.809803°  
Long: 103.803386°

2010 Alum. Cap,  
Flush W/Ground,  
N/W Fence  
Lat: 40.802369°  
Long: 103.822411°

S89°15'31"W - 2670.99' (Meas.)

S89°15'31"W - 2670.99' (Meas.)

2010 Alum. Cap,  
Flush W/Ground  
Lat: 40.802556°  
Long: 103.803122°

2012 Alum. Cap,  
0.2' High  
Lat: 40.802461°  
Long: 103.812767°

PDOP = 1.3

### NAD 83 (SURFACE LOCATION)

LATITUDE = 40°48'58.59" (40.816275)  
LONGITUDE = 103°48'39.71" (103.811031)

### NAD 27 (SURFACE LOCATION)

LATITUDE = 40°48'58.65" (40.816292)  
LONGITUDE = 103°48'37.91" (103.810531)



### CERTIFICATE

THIS IS TO CERTIFY THAT THE ABOVE PLAT WAS PREPARED FROM FIELD  
NOTES OF ACTUAL SURVEYS MADE BY ME OR UNDER MY SUPERVISION  
AND THAT THE SAME ARE TRUE AND CORRECT TO THE BEST OF MY  
KNOWLEDGE AND BELIEF.

REGISTERED LAND SURVEYOR  
REGISTRATION NO. 28285  
STATE OF COLORADO

### BASIS OF BEARINGS

BASIS OF BEARINGS IS A G.P.S. OBSERVATION

### BASIS OF ELEVATION

SPOT ELEVATION LOCATED AT THE NORTHEAST CORNER OF SECTION 15, T9N, R58W,  
6th P.M. TAKEN FROM THE GATEHOOK SPRING, QUADRANGLE, COLORADO, WELD  
COUNTY, 7.5 MINUTE QUAD (TOPOGRAPHIC MAP) PUBLISHED BY THE UNITED STATES  
DEPARTMENT OF THE INTERIOR, GEOLOGICAL SURVEY. SAID ELEVATION IS MARKED  
AS BEING 4679 FEET.



### WHITING OIL & GAS CORP.

**RAZOR #25B-2449 (SURFACE LOCATION)**  
NW 1/4 NE 1/4, SECTION 25, T10N, R58W, 6th P.M.  
WELD COUNTY, COLORADO

SURVEYED BY: JARED CHRISTOPHER, B.C.	DATE: 03-10-15
DRAWN BY: J.S.	DATE DRAWN: 03-23-15
SCALE: 1" = 1000'	REVISED: 08-18-15 M.O.E.

### WELL LOCATION PLAT



**UELS, LLC**  
Corporate Office \* 85 South 200 East  
Vernal, UT 84078 \* (435) 789-1017

**LEGEND:**

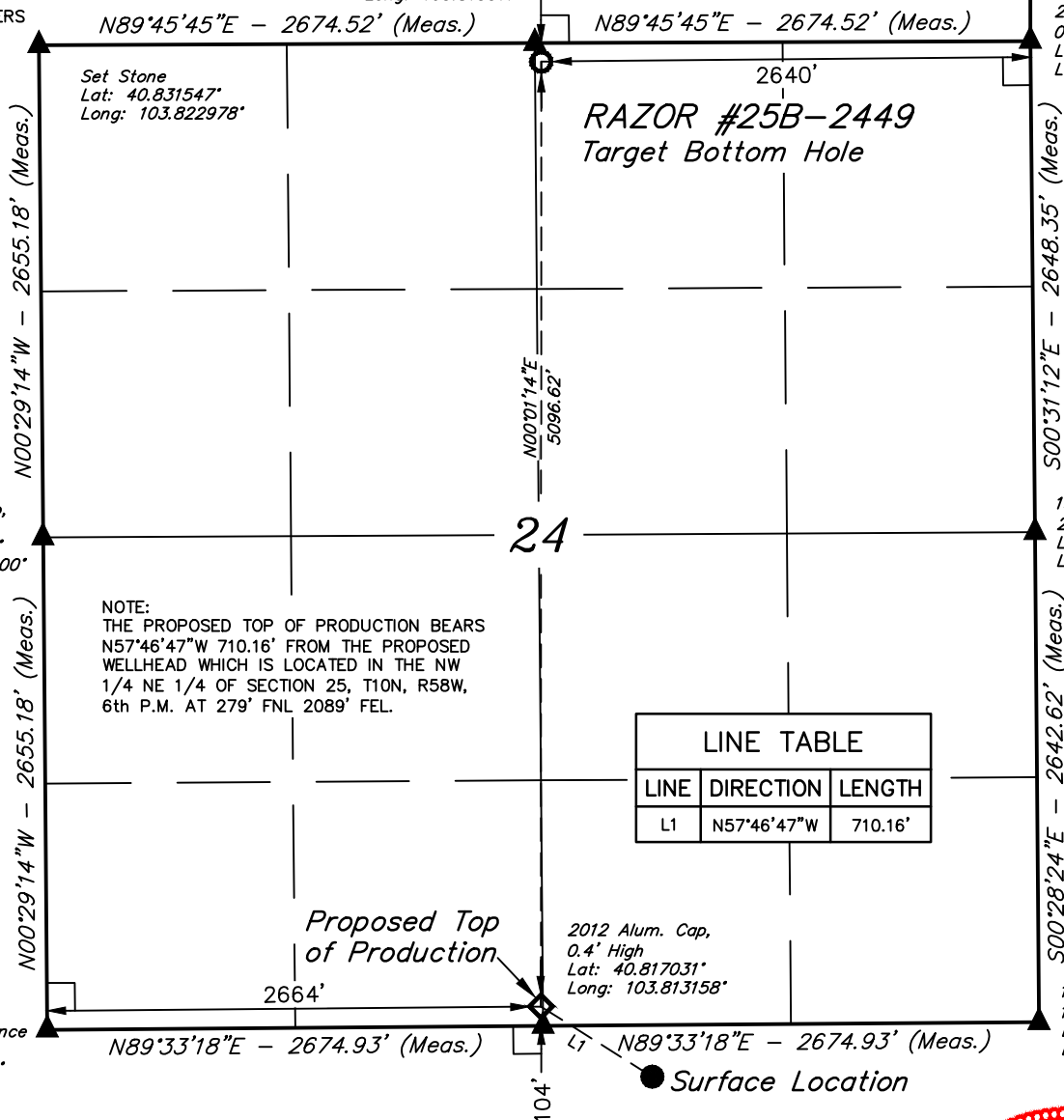
- = 90° SYMBOL  
 = PROPOSED WELLHEAD.  
 = TARGET BOTTOM HOLE.  
 = PROPOSED TOP OF PRODUCTION  
 = SECTION CORNERS LOCATED.

*T10N, R58W, 6th P.M.*

2012 Alum. Cap,  
0.3' High  
Lat: 40.831575°  
Long: 103.813317°

R  
58  
W

2011 Alum. Cap,  
0.6' Below Ground  
Lat: 40.831603°  
Long: 103.803653°



2010 Alum. Cap,  
0.3' High, N/E Fence  
Lat: 40.816975°  
Long: 103.822819°

2012 Alum. Cap,  
0.4' High  
Lat: 40.817031°  
Long: 103.813158°

1917 Brass Cap,  
2.0' High  
Lat: 40.824336°  
Long: 103.803572°

1917 Brass Cap,  
1.0' High  
Lat: 40.817086°  
Long: 103.803497°



NAD 83 (TARGET BOTTOM HOLE)	NAD 83 (PROPOSED TOP OF PRODUCTION)
LATITUDE = 40°49'52.69" (40.831303)	LATITUDE = 40°49'02.34" (40.817317)
LONGITUDE = 103°48'47.48" (103.813189)	LONGITUDE = 103°48'47.52" (103.813200)
NAD 27 (TARGET BOTTOM HOLE)	NAD 27 (PROPOSED TOP OF PRODUCTION)
LATITUDE = 40°49'52.74" (40.831317)	LATITUDE = 40°49'02.39" (40.817331)
LONGITUDE = 103°48'45.67" (103.812686)	LONGITUDE = 103°48'45.72" (103.812700)

**CERTIFICATE**

THIS IS TO CERTIFY THAT THE ABOVE PLAT WAS PREPARED FROM FIELD NOTES OF ACTUAL SURVEYS MADE BY ME OR UNDER MY SUPERVISION AND THAT THE SAME ARE TRUE AND CORRECT TO THE BEST OF MY KNOWLEDGE AND BELIEF.

REGISTERED LAND SURVEYOR  
REGISTRATION NO. 28285  
STATE OF COLORADO

**BASIS OF BEARINGS**  
BASIS OF BEARINGS IS A G.P.S. OBSERVATION

**BASIS OF ELEVATION**

SPOT ELEVATION LOCATED AT THE NORTHEAST CORNER OF SECTION 15, T9N, R58W, 6th P.M. TAKEN FROM THE GATEHOOK SPRING, QUADRANGLE, COLORADO, WELD COUNTY, 7.5 MINUTE QUAD (TOPOGRAPHIC MAP) PUBLISHED BY THE UNITED STATES DEPARTMENT OF THE INTERIOR, GEOLOGICAL SURVEY. SAID ELEVATION IS MARKED AS BEING 4679 FEET.

**WHITING OIL & GAS CORP.**

**RAZOR #25B-2449 (TARGET BOTTOM HOLE)**  
NW 1/4 NE 1/4, SECTION 24, T10N, R58W, 6th P.M.  
WELD COUNTY, COLORADO

SURVEYED BY: JARED CHRISTOPHER, B.C.	DATE: 03-10-15
DRAWN BY: J.S.	DATE DRAWN: 03-23-15
SCALE: 1" = 1000'	REVISED: 08-28-15 K.B.

**WELL LOCATION PLAT**

**UELS, LLC**  
Corporate Office \* 85 South 200 East  
Vernal, UT 84078 \* (435) 789-1017

