

# Bayswater Exploration & Production, LLC

Well Name: **Ivey P-11-2HN**

Surface Location: Ivey Pad Sec.11-T1S-R68W

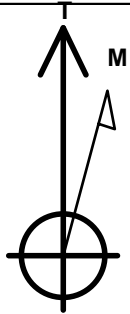
North American Datum 1983 , US State Plane 1983 , Colorado Northern Zone

Ground Elevation: 5106.0

+N/-S	+E/-W	Northing	Easting	Latitude	Longitude	Slot
0.0	0.0	1234283.02	3149880.17	39.975250	-104.965198	
RKB - 22.5' WELL @ 5128.5ft (RKB - 22.5')						

## WELLBORE TARGET DETAILS

Name	TVD	+N/-S	+E/-W	Shape
SHL 1175'FSL, 1619'FEL, SEC.11	1.0	0.0	0.0	Point
BHL 465'FNL, 190'FEL, SEC.2	7739.0	8671.1	1456.0	Point
LANDING PT. 1785'FSL, 190'FEL, SEC.11	7754.0	607.0	1428.8	Point



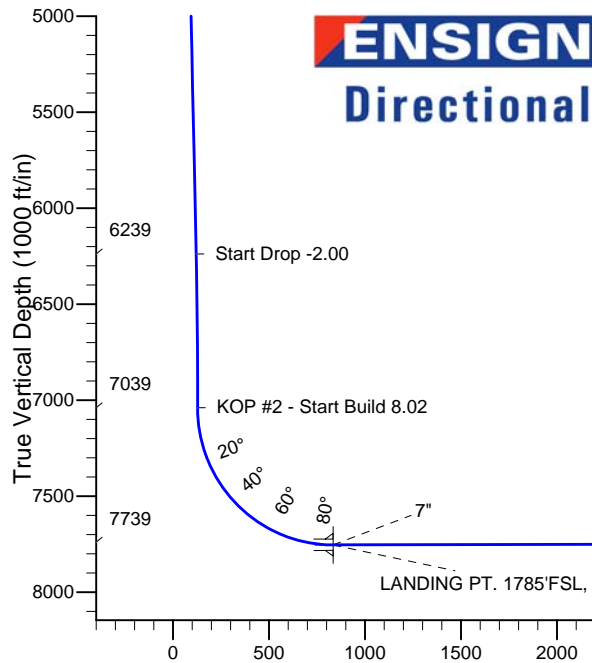
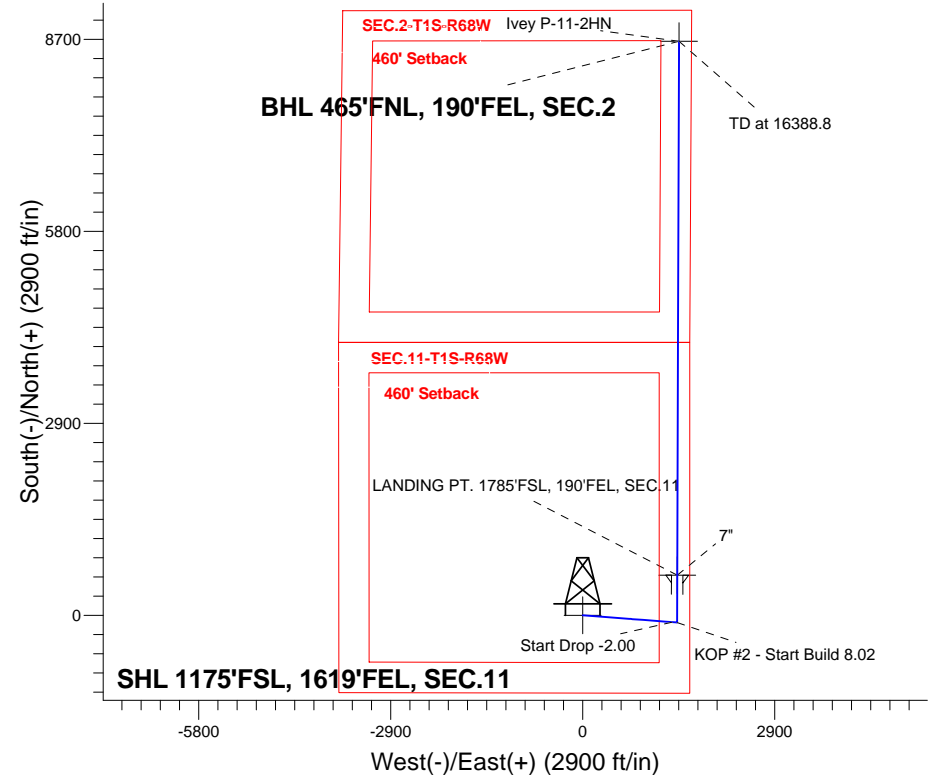
Azimuths to True North  
Magnetic North: 8.52°

Magnetic Field  
Strength: 52561.0srT  
Dip Angle: 66.57°  
Date: 7/10/2014  
Model: IGRF2010

Ivey Pad Sec.11-T1S-R68W  
Ivey P-11-2HN  
Plan #1 (9-4-14)

## ANNOTATIONS

TVD	MD	Annotation
200.0	200.0	KOP - Start Build 2.00
6238.7	6394.0	Start Drop -2.00
7039.4	7200.7	KOP #2 - Start Build 8.02
7739.0	16388.8	TD at 16388.8



## SECTION DETAILS

Sec	MD	Inc	Azi	TVD	+N/-S	+E/-W	DLeg	TFace	VSec	Target
1	0.0	0.00	0.00	0.0	0.0	0.0	0.00	0.00	0.0	
2	200.0	0.00	0.00	200.0	0.0	0.0	0.00	0.00	0.0	
3	867.3	13.35	94.37	861.3	-5.9	77.2	2.00	94.37	6.9	
4	6394.0	13.35	94.37	6238.7	-103.1	1349.2	0.00	0.00	121.3	
5	7061.3	0.00	0.00	6900.0	-109.0	1426.4	2.00	180.00	128.3	
6	7200.7	0.00	0.00	7039.4	-109.0	1426.4	0.00	0.00	128.3	
7	8324.6	90.11	0.19	7754.0	606.9	1428.8	8.02	0.19	834.8	
8	8324.6	90.11	0.19	7754.0	607.0	1428.8	0.00	0.00	834.8	LANDING PT. 1785'FSL, 190'FEL, SEC.11
9	8325.2	90.11	0.19	7754.0	607.6	1428.8	1.00	122.66	835.4	
10	16388.8	90.11	0.19	7739.0	8671.1	1456.0	0.00	0.00	8792.5	BHL 465'FNL, 190'FEL, SEC.2

Vertical Section at 9.51° (1000 ft/in)



# **Bayswater Exploration & Production, LLC**

**SEC.11-T1S-R68W**

**Ivey Pad Sec.11-T1S-R68W**

**Ivey P-11-2HN**

**Wellbore #1**

**Plan: Plan #1 (9-4-14)**

## **Standard Planning Report**

**05 September, 2014**



**BAYSWATER**  
**EXPLORATION & PRODUCTION, LLC**

<b>Database:</b>	landmark	<b>Local Co-ordinate Reference:</b>	Well Ivey P-11-2HN
<b>Company:</b>	Bayswater Exploration & Production, LLC	<b>TVD Reference:</b>	WELL @ 5128.5ft (RKB - 22.5')
<b>Project:</b>	SEC.11-T1S-R68W	<b>MD Reference:</b>	WELL @ 5128.5ft (RKB - 22.5')
<b>Site:</b>	Ivey Pad Sec.11-T1S-R68W	<b>North Reference:</b>	True
<b>Well:</b>	Ivey P-11-2HN	<b>Survey Calculation Method:</b>	Minimum Curvature
<b>Wellbore:</b>	Wellbore #1		
<b>Design:</b>	Plan #1 (9-4-14)		

<b>Project</b>	SEC.11-T1S-R68W, Weld County, Colorado		
<b>Map System:</b>	US State Plane 1983	<b>System Datum:</b>	Mean Sea Level
<b>Geo Datum:</b>	North American Datum 1983		Using Well Reference Point
<b>Map Zone:</b>	Colorado Northern Zone		Using geodetic scale factor

Site		Ivey Pad Sec.11-T1S-R68W			
Site Position:		Northing:	1,234,283.31 ft	Latitude:	39.975252
From:	Lat/Long	Easting:	3,149,805.06 ft	Longitude:	-104.965466
Position Uncertainty:	0.0 ft	Slot Radius:	"	Grid Convergence:	0.35 °

Well	Ivey P-11-2HN					
Well Position	+N/-S	-0.7 ft	Northing:	1,234,283.02 ft	Latitude:	39.975250
	+E/-W	75.1 ft	Easting:	3,149,880.17 ft	Longitude:	-104.965198
Position Uncertainty		0.0 ft	Wellhead Elevation:	ft	Ground Level:	5,106.0 ft

<b>Wellbore</b>	Wellbore #1				
<b>Magnetics</b>	<b>Model Name</b>	<b>Sample Date</b>	<b>Declination (°)</b>	<b>Dip Angle (°)</b>	<b>Field Strength (nT)</b>
	IGRF2010	7/10/2014	8.52	66.57	52,561

<b>Design</b>	Plan #1 (9-4-14)			
<b>Audit Notes:</b>				
<b>Version:</b>	<b>Phase:</b>	PROTOTYPE	<b>Tie On Depth:</b>	0.0
<b>Vertical Section:</b>	<b>Depth From (TVD) (ft)</b>	<b>+N/-S (ft)</b>	<b>+E/-W (ft)</b>	<b>Direction (°)</b>
	0.0	0.0	0.0	9.51

<b>Plan Sections</b>										
Measured Depth (ft)	Inclination (°)	Azimuth (°)	Vertical Depth (ft)	+N/-S (ft)	+E/-W (ft)	Dogleg Rate (°/100ft)	Build Rate (°/100ft)	Turn Rate (°/100ft)	TFO (°)	Target
0.0	0.00	0.00	0.0	0.0	0.0	0.00	0.00	0.00	0.00	
200.0	0.00	0.00	200.0	0.0	0.0	0.00	0.00	0.00	0.00	
867.3	13.35	94.37	861.3	-5.9	77.2	2.00	2.00	0.00	94.37	
6,394.0	13.35	94.37	6,238.7	-103.1	1,349.2	0.00	0.00	0.00	0.00	
7,061.3	0.00	0.00	6,900.0	-109.0	1,426.4	2.00	-2.00	0.00	180.00	
7,200.7	0.00	0.00	7,039.4	-109.0	1,426.4	0.00	0.00	0.00	0.00	
8,324.6	90.11	0.19	7,754.0	606.9	1,428.8	8.02	8.02	0.00	0.19	
8,324.6	90.11	0.19	7,754.0	607.0	1,428.8	0.00	0.00	0.00	0.00	LANDING PT. 1785
8,325.2	90.11	0.19	7,754.0	607.6	1,428.8	1.00	-0.54	0.84	122.66	
16,388.8	90.11	0.19	7,739.0	8,671.1	1,456.0	0.00	0.00	0.00	0.00	BHL 465'FNL, 190'f

<b>Database:</b>	landmark	<b>Local Co-ordinate Reference:</b>	Well Ivey P-11-2HN
<b>Company:</b>	Bayswater Exploration & Production, LLC	<b>TVD Reference:</b>	WELL @ 5128.5ft (RKB - 22.5')
<b>Project:</b>	SEC.11-T1S-R68W	<b>MD Reference:</b>	WELL @ 5128.5ft (RKB - 22.5')
<b>Site:</b>	Ivey Pad Sec.11-T1S-R68W	<b>North Reference:</b>	True
<b>Well:</b>	Ivey P-11-2HN	<b>Survey Calculation Method:</b>	Minimum Curvature
<b>Wellbore:</b>	Wellbore #1		
<b>Design:</b>	Plan #1 (9-4-14)		

Planned Survey									
Measured Depth (ft)	Inclination (°)	Azimuth (°)	Vertical Depth (ft)	+N/-S (ft)	+E/-W (ft)	Vertical Section (ft)	Dogleg Rate (°/100ft)	Build Rate (°/100ft)	Turn Rate (°/100ft)
0.0	0.00	0.00	0.0	0.0	0.0	0.0	0.00	0.00	0.00
100.0	0.00	0.00	100.0	0.0	0.0	0.0	0.00	0.00	0.00
200.0	0.00	0.00	200.0	0.0	0.0	0.0	0.00	0.00	0.00
<b>KOP - Start Build 2.00</b>									
300.0	2.00	94.37	300.0	-0.1	1.7	0.2	2.00	2.00	0.00
400.0	4.00	94.37	399.8	-0.5	7.0	0.6	2.00	2.00	0.00
500.0	6.00	94.37	499.5	-1.2	15.6	1.4	2.00	2.00	0.00
600.0	8.00	94.37	598.7	-2.1	27.8	2.5	2.00	2.00	0.00
700.0	10.00	94.37	697.5	-3.3	43.4	3.9	2.00	2.00	0.00
800.0	12.00	94.37	795.6	-4.8	62.4	5.6	2.00	2.00	0.00
867.3	13.35	94.37	861.3	-5.9	77.2	6.9	2.00	2.00	0.00
900.0	13.35	94.37	893.1	-6.5	84.7	7.6	0.00	0.00	0.00
1,000.0	13.35	94.37	990.4	-8.2	107.7	9.7	0.00	0.00	0.00
1,100.0	13.35	94.37	1,087.7	-10.0	130.7	11.8	0.00	0.00	0.00
1,200.0	13.35	94.37	1,185.0	-11.7	153.7	13.8	0.00	0.00	0.00
1,300.0	13.35	94.37	1,282.3	-13.5	176.7	15.9	0.00	0.00	0.00
1,400.0	13.35	94.37	1,379.6	-15.3	199.8	18.0	0.00	0.00	0.00
1,500.0	13.35	94.37	1,476.9	-17.0	222.8	20.0	0.00	0.00	0.00
1,600.0	13.35	94.37	1,574.2	-18.8	245.8	22.1	0.00	0.00	0.00
1,700.0	13.35	94.37	1,671.5	-20.5	268.8	24.2	0.00	0.00	0.00
1,800.0	13.35	94.37	1,768.8	-22.3	291.8	26.2	0.00	0.00	0.00
1,900.0	13.35	94.37	1,866.1	-24.1	314.8	28.3	0.00	0.00	0.00
2,000.0	13.35	94.37	1,963.4	-25.8	337.9	30.4	0.00	0.00	0.00
2,100.0	13.35	94.37	2,060.7	-27.6	360.9	32.5	0.00	0.00	0.00
2,200.0	13.35	94.37	2,158.0	-29.3	383.9	34.5	0.00	0.00	0.00
2,300.0	13.35	94.37	2,255.3	-31.1	406.9	36.6	0.00	0.00	0.00
2,400.0	13.35	94.37	2,352.6	-32.9	429.9	38.7	0.00	0.00	0.00
2,500.0	13.35	94.37	2,449.9	-34.6	453.0	40.7	0.00	0.00	0.00
2,600.0	13.35	94.37	2,547.2	-36.4	476.0	42.8	0.00	0.00	0.00
2,700.0	13.35	94.37	2,644.5	-38.1	499.0	44.9	0.00	0.00	0.00
2,800.0	13.35	94.37	2,741.8	-39.9	522.0	46.9	0.00	0.00	0.00
2,900.0	13.35	94.37	2,839.1	-41.6	545.0	49.0	0.00	0.00	0.00
3,000.0	13.35	94.37	2,936.4	-43.4	568.0	51.1	0.00	0.00	0.00
3,100.0	13.35	94.37	3,033.7	-45.2	591.1	53.2	0.00	0.00	0.00
3,200.0	13.35	94.37	3,131.0	-46.9	614.1	55.2	0.00	0.00	0.00
3,300.0	13.35	94.37	3,228.3	-48.7	637.1	57.3	0.00	0.00	0.00
3,400.0	13.35	94.37	3,325.6	-50.4	660.1	59.4	0.00	0.00	0.00
3,500.0	13.35	94.37	3,422.9	-52.2	683.1	61.4	0.00	0.00	0.00
3,600.0	13.35	94.37	3,520.2	-54.0	706.1	63.5	0.00	0.00	0.00
3,700.0	13.35	94.37	3,617.5	-55.7	729.2	65.6	0.00	0.00	0.00
3,800.0	13.35	94.37	3,714.8	-57.5	752.2	67.6	0.00	0.00	0.00
3,900.0	13.35	94.37	3,812.1	-59.2	775.2	69.7	0.00	0.00	0.00
4,000.0	13.35	94.37	3,909.4	-61.0	798.2	71.8	0.00	0.00	0.00
4,100.0	13.35	94.37	4,006.7	-62.8	821.2	73.9	0.00	0.00	0.00
4,200.0	13.35	94.37	4,104.0	-64.5	844.2	75.9	0.00	0.00	0.00
4,300.0	13.35	94.37	4,201.3	-66.3	867.3	78.0	0.00	0.00	0.00
4,400.0	13.35	94.37	4,298.6	-68.0	890.3	80.1	0.00	0.00	0.00
4,500.0	13.35	94.37	4,395.9	-69.8	913.3	82.1	0.00	0.00	0.00
4,600.0	13.35	94.37	4,493.2	-71.5	936.3	84.2	0.00	0.00	0.00
4,700.0	13.35	94.37	4,590.5	-73.3	959.3	86.3	0.00	0.00	0.00
4,800.0	13.35	94.37	4,687.8	-75.1	982.4	88.3	0.00	0.00	0.00
4,900.0	13.35	94.37	4,785.1	-76.8	1,005.4	90.4	0.00	0.00	0.00
5,000.0	13.35	94.37	4,882.4	-78.6	1,028.4	92.5	0.00	0.00	0.00
5,100.0	13.35	94.37	4,979.7	-80.3	1,051.4	94.6	0.00	0.00	0.00

<b>Database:</b>	landmark	<b>Local Co-ordinate Reference:</b>	Well Ivey P-11-2HN
<b>Company:</b>	Bayswater Exploration & Production, LLC	<b>TVD Reference:</b>	WELL @ 5128.5ft (RKB - 22.5')
<b>Project:</b>	SEC.11-T1S-R68W	<b>MD Reference:</b>	WELL @ 5128.5ft (RKB - 22.5')
<b>Site:</b>	Ivey Pad Sec.11-T1S-R68W	<b>North Reference:</b>	True
<b>Well:</b>	Ivey P-11-2HN	<b>Survey Calculation Method:</b>	Minimum Curvature
<b>Wellbore:</b>	Wellbore #1		
<b>Design:</b>	Plan #1 (9-4-14)		

Planned Survey										
Measured Depth (ft)	Inclination (°)	Azimuth (°)	Vertical Depth (ft)	+N/-S (ft)	+E/-W (ft)	Vertical Section (ft)	Dogleg Rate (°/100ft)	Build Rate (°/100ft)	Turn Rate (°/100ft)	
5,200.0	13.35	94.37	5,077.0	-82.1	1,074.4	96.6	0.00	0.00	0.00	
5,300.0	13.35	94.37	5,174.3	-83.9	1,097.4	98.7	0.00	0.00	0.00	
5,400.0	13.35	94.37	5,271.6	-85.6	1,120.5	100.8	0.00	0.00	0.00	
5,500.0	13.35	94.37	5,368.9	-87.4	1,143.5	102.8	0.00	0.00	0.00	
5,600.0	13.35	94.37	5,466.2	-89.1	1,166.5	104.9	0.00	0.00	0.00	
5,700.0	13.35	94.37	5,563.5	-90.9	1,189.5	107.0	0.00	0.00	0.00	
5,800.0	13.35	94.37	5,660.8	-92.7	1,212.5	109.0	0.00	0.00	0.00	
5,900.0	13.35	94.37	5,758.0	-94.4	1,235.5	111.1	0.00	0.00	0.00	
6,000.0	13.35	94.37	5,855.3	-96.2	1,258.6	113.2	0.00	0.00	0.00	
6,100.0	13.35	94.37	5,952.6	-97.9	1,281.6	115.2	0.00	0.00	0.00	
6,200.0	13.35	94.37	6,049.9	-99.7	1,304.6	117.3	0.00	0.00	0.00	
6,300.0	13.35	94.37	6,147.2	-101.5	1,327.6	119.4	0.00	0.00	0.00	
6,394.0	13.35	94.37	6,238.7	-103.1	1,349.3	121.3	0.00	0.00	0.00	
<b>Start Drop -2.00</b>										
6,400.0	13.23	94.37	6,244.5	-103.2	1,350.6	121.5	2.01	-2.01	0.00	
6,500.0	11.23	94.37	6,342.3	-104.8	1,371.7	123.4	2.00	-2.00	0.00	
6,600.0	9.23	94.37	6,440.7	-106.2	1,389.4	124.9	2.00	-2.00	0.00	
6,700.0	7.23	94.37	6,539.6	-107.3	1,403.7	126.2	2.00	-2.00	0.00	
6,800.0	5.23	94.37	6,639.1	-108.1	1,414.5	127.2	2.00	-2.00	0.00	
6,900.0	3.23	94.37	6,738.8	-108.7	1,421.9	127.9	2.00	-2.00	0.00	
7,000.0	1.23	94.37	6,838.7	-109.0	1,425.7	128.2	2.00	-2.00	0.00	
7,061.3	0.00	0.00	6,900.0	-109.0	1,426.4	128.3	2.00	-2.00	0.00	
7,100.0	0.00	0.00	6,938.7	-109.0	1,426.4	128.3	0.00	0.00	0.00	
7,200.0	0.00	0.00	7,038.7	-109.0	1,426.4	128.3	0.00	0.00	0.00	
7,200.7	0.00	0.00	7,039.4	-109.0	1,426.4	128.3	0.00	0.00	0.00	
<b>KOP #2 - Start Build 8.02</b>										
7,300.0	7.96	0.19	7,138.4	-102.1	1,426.4	135.1	8.02	8.02	0.00	
7,400.0	15.98	0.19	7,236.1	-81.4	1,426.5	155.5	8.02	8.02	0.00	
7,500.0	24.00	0.19	7,330.0	-47.2	1,426.6	189.2	8.02	8.02	0.00	
7,600.0	32.01	0.19	7,418.2	-0.3	1,426.8	235.5	8.02	8.02	0.00	
7,700.0	40.03	0.19	7,499.0	58.4	1,427.0	293.5	8.02	8.02	0.00	
7,800.0	48.05	0.19	7,570.9	127.9	1,427.2	362.0	8.02	8.02	0.00	
7,900.0	56.07	0.19	7,632.3	206.7	1,427.4	439.8	8.02	8.02	0.00	
8,000.0	64.09	0.19	7,682.2	293.3	1,427.7	525.2	8.02	8.02	0.00	
8,100.0	72.10	0.19	7,719.4	386.0	1,428.0	616.7	8.02	8.02	0.00	
8,200.0	80.12	0.19	7,743.4	483.0	1,428.3	712.4	8.02	8.02	0.00	
8,300.0	88.14	0.19	7,753.6	582.4	1,428.7	810.5	8.02	8.02	0.00	
8,324.6	90.11	0.19	7,754.0	607.0	1,428.8	834.8	8.01	8.01	0.00	
<b>7"</b>										
8,325.2	90.11	0.19	7,754.0	607.6	1,428.8	835.4	1.05	-0.57	0.88	
8,400.0	90.11	0.19	7,753.9	682.4	1,429.0	909.2	0.00	0.00	0.00	
8,500.0	90.11	0.19	7,753.7	782.4	1,429.3	1,007.9	0.00	0.00	0.00	
8,600.0	90.11	0.19	7,753.5	882.4	1,429.7	1,106.6	0.00	0.00	0.00	
8,700.0	90.11	0.19	7,753.3	982.4	1,430.0	1,205.2	0.00	0.00	0.00	
8,800.0	90.11	0.19	7,753.1	1,082.4	1,430.4	1,303.9	0.00	0.00	0.00	
8,900.0	90.11	0.19	7,752.9	1,182.4	1,430.7	1,402.6	0.00	0.00	0.00	
9,000.0	90.11	0.19	7,752.7	1,282.4	1,431.0	1,501.3	0.00	0.00	0.00	
9,100.0	90.11	0.19	7,752.6	1,382.4	1,431.4	1,600.0	0.00	0.00	0.00	
9,200.0	90.11	0.19	7,752.4	1,482.4	1,431.7	1,698.6	0.00	0.00	0.00	
9,300.0	90.11	0.19	7,752.2	1,582.4	1,432.1	1,797.3	0.00	0.00	0.00	
9,400.0	90.11	0.19	7,752.0	1,682.4	1,432.4	1,896.0	0.00	0.00	0.00	
9,500.0	90.11	0.19	7,751.8	1,782.4	1,432.7	1,994.7	0.00	0.00	0.00	
9,600.0	90.11	0.19	7,751.6	1,882.4	1,433.1	2,093.4	0.00	0.00	0.00	

<b>Database:</b>	landmark	<b>Local Co-ordinate Reference:</b>	Well Ivey P-11-2HN
<b>Company:</b>	Bayswater Exploration & Production, LLC	<b>TVD Reference:</b>	WELL @ 5128.5ft (RKB - 22.5')
<b>Project:</b>	SEC.11-T1S-R68W	<b>MD Reference:</b>	WELL @ 5128.5ft (RKB - 22.5')
<b>Site:</b>	Ivey Pad Sec.11-T1S-R68W	<b>North Reference:</b>	True
<b>Well:</b>	Ivey P-11-2HN	<b>Survey Calculation Method:</b>	Minimum Curvature
<b>Wellbore:</b>	Wellbore #1		
<b>Design:</b>	Plan #1 (9-4-14)		

Planned Survey										
Measured Depth (ft)	Inclination (°)	Azimuth (°)	Vertical Depth (ft)	+N/-S (ft)	+E/-W (ft)	Vertical Section (ft)	Dogleg Rate (°/100ft)	Build Rate (°/100ft)	Turn Rate (°/100ft)	
9,700.0	90.11	0.19	7,751.4	1,982.4	1,433.4	2,192.0	0.00	0.00	0.00	
9,800.0	90.11	0.19	7,751.3	2,082.4	1,433.7	2,290.7	0.00	0.00	0.00	
9,900.0	90.11	0.19	7,751.1	2,182.4	1,434.1	2,389.4	0.00	0.00	0.00	
10,000.0	90.11	0.19	7,750.9	2,282.4	1,434.4	2,488.1	0.00	0.00	0.00	
10,100.0	90.11	0.19	7,750.7	2,382.4	1,434.8	2,586.8	0.00	0.00	0.00	
10,200.0	90.11	0.19	7,750.5	2,482.4	1,435.1	2,685.4	0.00	0.00	0.00	
10,300.0	90.11	0.19	7,750.3	2,582.4	1,435.4	2,784.1	0.00	0.00	0.00	
10,400.0	90.11	0.19	7,750.1	2,682.4	1,435.8	2,882.8	0.00	0.00	0.00	
10,500.0	90.11	0.19	7,750.0	2,782.4	1,436.1	2,981.5	0.00	0.00	0.00	
10,600.0	90.11	0.19	7,749.8	2,882.4	1,436.4	3,080.2	0.00	0.00	0.00	
10,700.0	90.11	0.19	7,749.6	2,982.4	1,436.8	3,178.8	0.00	0.00	0.00	
10,800.0	90.11	0.19	7,749.4	3,082.4	1,437.1	3,277.5	0.00	0.00	0.00	
10,900.0	90.11	0.19	7,749.2	3,182.4	1,437.5	3,376.2	0.00	0.00	0.00	
11,000.0	90.11	0.19	7,749.0	3,282.4	1,437.8	3,474.9	0.00	0.00	0.00	
11,100.0	90.11	0.19	7,748.8	3,382.4	1,438.1	3,573.6	0.00	0.00	0.00	
11,200.0	90.11	0.19	7,748.7	3,482.4	1,438.5	3,672.2	0.00	0.00	0.00	
11,300.0	90.11	0.19	7,748.5	3,582.4	1,438.8	3,770.9	0.00	0.00	0.00	
11,400.0	90.11	0.19	7,748.3	3,682.4	1,439.2	3,869.6	0.00	0.00	0.00	
11,500.0	90.11	0.19	7,748.1	3,782.4	1,439.5	3,968.3	0.00	0.00	0.00	
11,600.0	90.11	0.19	7,747.9	3,882.4	1,439.8	4,066.9	0.00	0.00	0.00	
11,700.0	90.11	0.19	7,747.7	3,982.4	1,440.2	4,165.6	0.00	0.00	0.00	
11,800.0	90.11	0.19	7,747.5	4,082.4	1,440.5	4,264.3	0.00	0.00	0.00	
11,900.0	90.11	0.19	7,747.3	4,182.4	1,440.8	4,363.0	0.00	0.00	0.00	
12,000.0	90.11	0.19	7,747.2	4,282.4	1,441.2	4,461.7	0.00	0.00	0.00	
12,100.0	90.11	0.19	7,747.0	4,382.4	1,441.5	4,560.3	0.00	0.00	0.00	
12,200.0	90.11	0.19	7,746.8	4,482.4	1,441.9	4,659.0	0.00	0.00	0.00	
12,300.0	90.11	0.19	7,746.6	4,582.4	1,442.2	4,757.7	0.00	0.00	0.00	
12,400.0	90.11	0.19	7,746.4	4,682.4	1,442.5	4,856.4	0.00	0.00	0.00	
12,500.0	90.11	0.19	7,746.2	4,782.4	1,442.9	4,955.1	0.00	0.00	0.00	
12,600.0	90.11	0.19	7,746.0	4,882.4	1,443.2	5,053.7	0.00	0.00	0.00	
12,700.0	90.11	0.19	7,745.9	4,982.4	1,443.6	5,152.4	0.00	0.00	0.00	
12,800.0	90.11	0.19	7,745.7	5,082.4	1,443.9	5,251.1	0.00	0.00	0.00	
12,900.0	90.11	0.19	7,745.5	5,182.3	1,444.2	5,349.8	0.00	0.00	0.00	
13,000.0	90.11	0.19	7,745.3	5,282.3	1,444.6	5,448.5	0.00	0.00	0.00	
13,100.0	90.11	0.19	7,745.1	5,382.3	1,444.9	5,547.1	0.00	0.00	0.00	
13,200.0	90.11	0.19	7,744.9	5,482.3	1,445.2	5,645.8	0.00	0.00	0.00	
13,300.0	90.11	0.19	7,744.7	5,582.3	1,445.6	5,744.5	0.00	0.00	0.00	
13,400.0	90.11	0.19	7,744.6	5,682.3	1,445.9	5,843.2	0.00	0.00	0.00	
13,500.0	90.11	0.19	7,744.4	5,782.3	1,446.3	5,941.9	0.00	0.00	0.00	
13,600.0	90.11	0.19	7,744.2	5,882.3	1,446.6	6,040.5	0.00	0.00	0.00	
13,700.0	90.11	0.19	7,744.0	5,982.3	1,446.9	6,139.2	0.00	0.00	0.00	
13,800.0	90.11	0.19	7,743.8	6,082.3	1,447.3	6,237.9	0.00	0.00	0.00	
13,900.0	90.11	0.19	7,743.6	6,182.3	1,447.6	6,336.6	0.00	0.00	0.00	
14,000.0	90.11	0.19	7,743.4	6,282.3	1,447.9	6,435.3	0.00	0.00	0.00	
14,100.0	90.11	0.19	7,743.3	6,382.3	1,448.3	6,533.9	0.00	0.00	0.00	
14,200.0	90.11	0.19	7,743.1	6,482.3	1,448.6	6,632.6	0.00	0.00	0.00	
14,300.0	90.11	0.19	7,742.9	6,582.3	1,449.0	6,731.3	0.00	0.00	0.00	
14,400.0	90.11	0.19	7,742.7	6,682.3	1,449.3	6,830.0	0.00	0.00	0.00	
14,500.0	90.11	0.19	7,742.5	6,782.3	1,449.6	6,928.7	0.00	0.00	0.00	
14,600.0	90.11	0.19	7,742.3	6,882.3	1,450.0	7,027.3	0.00	0.00	0.00	
14,700.0	90.11	0.19	7,742.1	6,982.3	1,450.3	7,126.0	0.00	0.00	0.00	
14,800.0	90.11	0.19	7,742.0	7,082.3	1,450.7	7,224.7	0.00	0.00	0.00	
14,900.0	90.11	0.19	7,741.8	7,182.3	1,451.0	7,323.4	0.00	0.00	0.00	
15,000.0	90.11	0.19	7,741.6	7,282.3	1,451.3	7,422.1	0.00	0.00	0.00	

<b>Database:</b>	landmark	<b>Local Co-ordinate Reference:</b>	Well Ivey P-11-2HN
<b>Company:</b>	Bayswater Exploration & Production, LLC	<b>TVD Reference:</b>	WELL @ 5128.5ft (RKB - 22.5')
<b>Project:</b>	SEC.11-T1S-R68W	<b>MD Reference:</b>	WELL @ 5128.5ft (RKB - 22.5')
<b>Site:</b>	Ivey Pad Sec.11-T1S-R68W	<b>North Reference:</b>	True
<b>Well:</b>	Ivey P-11-2HN	<b>Survey Calculation Method:</b>	Minimum Curvature
<b>Wellbore:</b>	Wellbore #1		
<b>Design:</b>	Plan #1 (9-4-14)		

Planned Survey										
Measured Depth (ft)	Inclination (°)	Azimuth (°)	Vertical Depth (ft)	+N/-S (ft)	+E/-W (ft)	Vertical Section (ft)	Dogleg Rate (°/100ft)	Build Rate (°/100ft)	Turn Rate (°/100ft)	
15,100.0	90.11	0.19	7,741.4	7,382.3	1,451.7	7,520.7	0.00	0.00	0.00	
15,200.0	90.11	0.19	7,741.2	7,482.3	1,452.0	7,619.4	0.00	0.00	0.00	
15,300.0	90.11	0.19	7,741.0	7,582.3	1,452.3	7,718.1	0.00	0.00	0.00	
15,400.0	90.11	0.19	7,740.8	7,682.3	1,452.7	7,816.8	0.00	0.00	0.00	
15,500.0	90.11	0.19	7,740.7	7,782.3	1,453.0	7,915.5	0.00	0.00	0.00	
15,600.0	90.11	0.19	7,740.5	7,882.3	1,453.4	8,014.1	0.00	0.00	0.00	
15,700.0	90.11	0.19	7,740.3	7,982.3	1,453.7	8,112.8	0.00	0.00	0.00	
15,800.0	90.11	0.19	7,740.1	8,082.3	1,454.0	8,211.5	0.00	0.00	0.00	
15,900.0	90.11	0.19	7,739.9	8,182.3	1,454.4	8,310.2	0.00	0.00	0.00	
16,000.0	90.11	0.19	7,739.7	8,282.3	1,454.7	8,408.9	0.00	0.00	0.00	
16,100.0	90.11	0.19	7,739.5	8,382.3	1,455.1	8,507.5	0.00	0.00	0.00	
16,200.0	90.11	0.19	7,739.4	8,482.3	1,455.4	8,606.2	0.00	0.00	0.00	
16,300.0	90.11	0.19	7,739.2	8,582.3	1,455.7	8,704.9	0.00	0.00	0.00	
16,388.8	90.11	0.19	7,739.0	8,671.1	1,456.0	8,792.5	0.00	0.00	0.00	
TD at 16388.8										

Targets										
Target Name	Dip Angle (°)	Dip Dir. (°)	TVD (ft)	+N/-S (ft)	+E/-W (ft)	Northing (ft)	Easting (ft)	Latitude	Longitude	
- hit/miss target										
- Shape										
SHL 1176'FSL, 1694'f	0.00	0.00	0.0	0.7	-75.1	1,234,283.31	3,149,805.06	39.975252	-104.965466	
- plan misses by 75.1ft at 0.0ft MD (0.0 TVD, 0.0 N, 0.0 E)										
- Point										
SHL 1175'FSL, 1619'	0.00	0.00	1.0	0.0	0.0	1,234,283.03	3,149,880.17	39.975250	-104.965198	
- plan hits target										
- Point										
LANDING PT. 1785'F:	0.00	0.00	7,754.0	607.0	1,428.8	1,234,898.56	3,151,305.19	39.976916	-104.960100	
- plan hits target										
- Point										
BHL 465'FNL, 190'FE	0.00	0.00	7,739.0	8,671.1	1,456.0	1,242,962.50	3,151,283.83	39.999053	-104.960001	
- plan hits target										
- Point										

Casing Points						
Measured Depth (ft)	Vertical Depth (ft)	Name	Casing Diameter (")	Hole Diameter (")		
8,324.6	7,754.0	7"	7	7-1/2		

Plan Annotations					
Measured Depth (ft)	Vertical Depth (ft)	+N/-S (ft)	+E/-W (ft)	Comment	
200.0	200.0	0.0	0.0	KOP - Start Build 2.00	
6,394.0	6,238.7	-103.1	1,349.3	Start Drop -2.00	
7,200.7	7,039.4	-109.0	1,426.4	KOP #2 - Start Build 8.02	
16,388.8	7,739.0	8,671.1	1,456.0	TD at 16388.8	



# **Bayswater Exploration & Production, LLC**

**SEC.11-T1S-R68W**

**Ivey Pad Sec.11-T1S-R68W**

**Ivey P-11-2HN**

**Wellbore #1**

**Plan #1 (9-4-14)**

## **Anticollision Report**

**05 September, 2014**



**BAYSWATER**  
**EXPLORATION & PRODUCTION, LLC**



<b>Company:</b>	Bayswater Exploration & Production, LLC	<b>Local Co-ordinate Reference:</b>	Well Ivey P-11-2HN
<b>Project:</b>	SEC.11-T1S-R68W	<b>TVD Reference:</b>	WELL @ 5128.5ft (RKB - 22.5')
<b>Reference Site:</b>	Ivey Pad Sec.11-T1S-R68W	<b>MD Reference:</b>	WELL @ 5128.5ft (RKB - 22.5')
<b>Site Error:</b>	0.0ft	<b>North Reference:</b>	True
<b>Reference Well:</b>	Ivey P-11-2HN	<b>Survey Calculation Method:</b>	Minimum Curvature
<b>Well Error:</b>	0.0ft	<b>Output errors are at</b>	2.00 sigma
<b>Reference Wellbore</b>	Wellbore #1	<b>Database:</b>	landmark
<b>Reference Design:</b>	Plan #1 (9-4-14)	<b>Offset TVD Reference:</b>	Offset Datum

<b>Reference</b>	Plan #1 (9-4-14)		
<b>Filter type:</b>	NO GLOBAL FILTER: Using user defined selection & filtering criteria		
<b>Interpolation Method:</b>	MD Interval 100.0ft	<b>Error Model:</b>	ISCWSA
<b>Depth Range:</b>	Unlimited	<b>Scan Method:</b>	Closest Approach 3D
<b>Results Limited by:</b>	Maximum center-center distance of 600.0ft	<b>Error Surface:</b>	Elliptical Conic
<b>Warning Levels Evaluated at:</b>	2.00 Sigma		

<b>Survey Tool Program</b>	<b>Date</b> 9/5/2014			
<b>From (ft)</b>	<b>To (ft)</b>	<b>Survey (Wellbore)</b>	<b>Tool Name</b>	<b>Description</b>
0.0	16,388.8	Plan #1 (9-4-14) (Wellbore #1)	MWD	MWD - Standard

Summary						
Site Name	Reference Measured Depth (ft)	Offset Measured Depth (ft)	Distance Between Centres (ft)	Distance Between Ellipses (ft)	Separation Factor	Warning
Offset Well - Wellbore - Design						
Ivey Pad Sec.11-T1S-R68W						
Ivey H-11-2HN - Wellbore #1 - Plan #1 (9-4-14)	200.0	202.0	122.8	122.1	180.858 CC, ES	
Ivey H-11-2HN - Wellbore #1 - Plan #1 (9-4-14)	1,200.0	1,187.0	261.2	255.7	48.039 SF	
Ivey I-11-2HC - Wellbore #1 - Plan #1 (9-4-14)	200.0	202.0	99.7	99.1	146.951 CC, ES	
Ivey I-11-2HC - Wellbore #1 - Plan #1 (9-4-14)	900.0	895.1	178.7	174.8	45.560 SF	
Ivey I-11-2HN - Wellbore #1 - Plan #1 (9-4-14)	200.0	202.0	110.6	110.0	162.985 CC, ES	
Ivey I-11-2HN - Wellbore #1 - Plan #1 (9-4-14)	1,400.0	1,381.6	298.1	291.7	46.859 SF	
Ivey J-11-2HN - Wellbore #1 - Plan #1 (9-4-14)	200.0	202.0	89.6	88.9	131.978 CC, ES	
Ivey J-11-2HN - Wellbore #1 - Plan #1 (9-4-14)	800.0	797.6	149.4	146.0	43.573 SF	
Ivey K-11-2HN - Wellbore #1 - Plan #1 (9-4-14)	200.0	201.0	81.3	80.6	120.141 CC, ES	
Ivey K-11-2HN - Wellbore #1 - Plan #1 (9-4-14)	800.0	796.6	142.8	139.4	41.868 SF	
Ivey L-11-2HN - Wellbore #1 - Plan #1 (9-4-14)	200.0	201.0	75.1	74.4	111.027 CC, ES	
Ivey L-11-2HN - Wellbore #1 - Plan #1 (9-4-14)	700.0	698.5	118.6	115.6	40.336 SF	
Ivey M-11-12HC - Wellbore #1 - Plan #1 (7-02-14)	200.0	202.0	148.1	147.4	218.115 CC, ES	
Ivey M-11-12HC - Wellbore #1 - Plan #1 (7-02-14)	7,700.0	10,485.3	535.3	454.9	6.660 SF	
Ivey M-11-12HN - Wellbore #1 - Plan #2 (9-4-14)	200.0	202.0	135.3	134.6	199.320 CC, ES	
Ivey M-11-12HN - Wellbore #1 - Plan #2 (9-4-14)	7,800.0	10,276.4	217.6	144.9	2.995 SF	
Ivey M-11-2HC - Wellbore #1 - Plan #1 (9-4-14)	200.0	200.0	45.1	44.4	66.920 CC, ES	
Ivey M-11-2HC - Wellbore #1 - Plan #1 (9-4-14)	5,100.0	5,090.5	593.6	568.2	23.410 SF	
Ivey M-11-2HN - Wellbore #1 - Plan #1 (9-4-14)	200.0	201.0	60.0	59.3	88.653 CC, ES	
Ivey M-11-2HN - Wellbore #1 - Plan #1 (9-4-14)	4,100.0	4,096.2	598.0	578.2	30.197 SF	
Ivey N-11-12HN - Wellbore #1 - Plan #1 (7-02-13)	200.0	201.0	161.6	160.9	238.867 CC, ES	
Ivey N-11-12HN - Wellbore #1 - Plan #1 (7-02-13)	7,600.0	10,284.3	465.8	377.9	5.299 SF	
Ivey N-11-2HN - Wellbore #1 - Plan #1 (9-4-14)	200.0	200.0	30.0	29.3	44.473 CC, ES	
Ivey N-11-2HN - Wellbore #1 - Plan #1 (9-4-14)	6,100.0	6,093.7	556.5	525.4	17.942 SF	
Ivey O-11-12HN - Wellbore #1 - Plan #1 (8-21-14)	200.0	201.0	175.2	174.6	259.003 CC, ES	
Ivey O-11-12HN - Wellbore #1 - Plan #1 (8-21-14)	900.0	852.5	277.3	273.3	69.162 SF	
Ivey O-11-2HN - Wellbore #1 - Plan #1 (9-4-14)	200.0	200.0	15.1	14.5	22.445 CC, ES	
Ivey O-11-2HN - Wellbore #1 - Plan #1 (9-4-14)	16,388.8	16,416.7	342.1	15.5	1.047 Level 2, SF	
Ivey P-11-12HN - Wellbore #1 - Plan #1 (8-21-14)	166.3	167.3	189.0	188.5	359.855 CC	
Ivey P-11-12HN - Wellbore #1 - Plan #1 (8-21-14)	200.0	200.0	189.0	188.3	280.283 ES	
Ivey P-11-12HN - Wellbore #1 - Plan #1 (8-21-14)	1,500.0	1,368.5	572.0	564.6	77.571 SF	

<b>Company:</b>	Bayswater Exploration & Production, LLC	<b>Local Co-ordinate Reference:</b>	Well Ivey P-11-2HN
<b>Project:</b>	SEC.11-T1S-R68W	<b>TVD Reference:</b>	WELL @ 5128.5ft (RKB - 22.5')
<b>Reference Site:</b>	Ivey Pad Sec.11-T1S-R68W	<b>MD Reference:</b>	WELL @ 5128.5ft (RKB - 22.5')
<b>Site Error:</b>	0.0ft	<b>North Reference:</b>	True
<b>Reference Well:</b>	Ivey P-11-2HN	<b>Survey Calculation Method:</b>	Minimum Curvature
<b>Well Error:</b>	0.0ft	<b>Output errors are at</b>	2.00 sigma
<b>Reference Wellbore</b>	Wellbore #1	<b>Database:</b>	landmark
<b>Reference Design:</b>	Plan #1 (9-4-14)	<b>Offset TVD Reference:</b>	Offset Datum

<b>Offset Design</b> Ivey Pad Sec.11-T1S-R68W - Ivey H-11-2HN - Wellbore #1 - Plan #1 (9-4-14)												<b>Offset Site Error:</b>	0.0 ft
Survey Program: 0-MWD												<b>Offset Well Error:</b>	0.0 ft
Reference	Offset	Semi Major Axis		Distance									
Measured Depth (ft)	Vertical Depth (ft)	Measured Depth (ft)	Vertical Depth (ft)	Reference (ft)	Offset (ft)	Highside Toolface (°)	Offset Wellbore Centre +N/-S (ft)	+E/-W (ft)	Between Centres (ft)	Between Ellipses (ft)	Minimum Separation (ft)	Separation Factor	Warning
0.0	0.0	2.0	2.0	0.0	0.0	-124.73	-69.9	-100.9	122.8	122.8	0.00	N/A	
100.0	100.0	102.0	102.0	0.1	0.1	-124.73	-69.9	-100.9	122.8	122.5	0.23	535.481	
200.0	200.0	202.0	202.0	0.3	0.3	-124.73	-69.9	-100.9	122.8	122.1	0.68	180.858 CC, ES	
300.0	300.0	302.0	302.0	0.6	0.6	141.39	-69.9	-100.9	124.1	123.0	1.12	110.709	
400.0	399.8	401.8	401.8	0.8	0.8	142.80	-69.9	-100.9	128.3	126.7	1.57	81.745	
500.0	499.5	501.5	501.5	1.0	1.0	144.95	-69.9	-100.9	135.3	133.3	2.03	66.600	
600.0	598.7	600.7	600.7	1.3	1.2	147.59	-69.9	-100.9	145.5	143.0	2.51	58.031	
700.0	697.5	699.5	699.5	1.6	1.5	150.47	-69.9	-100.9	158.9	155.9	2.99	53.127	
800.0	795.6	797.6	797.6	2.0	1.7	153.37	-69.9	-100.9	175.8	172.4	3.48	50.493	
900.0	893.1	895.1	895.1	2.5	1.9	156.17	-69.9	-100.9	196.1	192.1	3.97	49.339	
1,000.0	990.4	992.4	992.4	2.9	2.1	158.62	-69.9	-100.9	217.5	213.1	4.46	48.728	
1,100.0	1,087.7	1,089.7	1,089.7	3.4	2.3	160.63	-69.9	-100.9	239.2	234.3	4.95	48.319	
1,200.0	1,185.0	1,187.0	1,187.0	3.9	2.6	162.31	-69.9	-100.9	261.2	255.7	5.44	48.039 SF	
1,300.0	1,282.3	1,277.1	1,277.1	4.4	2.7	163.70	-69.8	-101.9	284.4	278.5	5.90	48.186	
1,400.0	1,379.6	1,364.8	1,364.7	4.9	2.9	165.03	-69.2	-105.6	310.5	304.2	6.36	48.846	
1,500.0	1,476.9	1,450.8	1,450.5	5.4	3.1	166.29	-68.3	-111.7	339.6	332.8	6.81	49.890	
1,600.0	1,574.2	1,535.2	1,534.5	5.9	3.3	167.46	-67.1	-120.3	371.6	364.3	7.25	51.228	
1,700.0	1,671.5	1,617.9	1,616.4	6.4	3.5	168.54	-65.5	-131.0	406.3	398.6	7.70	52.797	
1,800.0	1,768.8	1,700.0	1,697.5	6.9	3.7	169.55	-63.5	-143.9	443.8	435.7	8.14	54.530	
1,900.0	1,866.1	1,777.5	1,773.6	7.4	4.0	170.43	-61.4	-158.3	483.9	475.3	8.57	56.434	
2,000.0	1,963.4	1,862.0	1,856.2	7.9	4.3	171.30	-58.8	-175.8	526.2	517.1	9.03	58.297	
2,100.0	2,060.7	1,952.2	1,944.4	8.4	4.6	172.11	-56.0	-194.7	568.8	559.3	9.48	60.013	

<b>Company:</b>	Bayswater Exploration & Production, LLC	<b>Local Co-ordinate Reference:</b>	Well Ivey P-11-2HN
<b>Project:</b>	SEC.11-T1S-R68W	<b>TVD Reference:</b>	WELL @ 5128.5ft (RKB - 22.5')
<b>Reference Site:</b>	Ivey Pad Sec.11-T1S-R68W	<b>MD Reference:</b>	WELL @ 5128.5ft (RKB - 22.5')
<b>Site Error:</b>	0.0ft	<b>North Reference:</b>	True
<b>Reference Well:</b>	Ivey P-11-2HN	<b>Survey Calculation Method:</b>	Minimum Curvature
<b>Well Error:</b>	0.0ft	<b>Output errors are at</b>	2.00 sigma
<b>Reference Wellbore</b>	Wellbore #1	<b>Database:</b>	landmark
<b>Reference Design:</b>	Plan #1 (9-4-14)	<b>Offset TVD Reference:</b>	Offset Datum

<b>Offset Design</b> Ivey Pad Sec.11-T1S-R68W - Ivey I-11-2HC - Wellbore #1 - Plan #1 (9-4-14)												<b>Offset Site Error:</b>	0.0 ft
Survey Program: 0-MWD												<b>Offset Well Error:</b>	0.0 ft
Reference		Offset		Semi Major Axis			Distance						
Measured Depth (ft)	Vertical Depth (ft)	Measured Depth (ft)	Vertical Depth (ft)	Reference (ft)	Offset (ft)	Highside Toolface (°)	Offset Wellbore Centre +N/-S (ft)	+E/-W (ft)	Between Centres (ft)	Between Ellipses (ft)	Minimum Separation (ft)	Separation Factor	Warning
0.0	0.0	2.0	2.0	0.0	0.0	-114.83	-41.9	-90.5	99.7	99.7	0.00	N/A	
100.0	100.0	102.0	102.0	0.1	0.1	-114.83	-41.9	-90.5	99.7	99.5	0.23	435.089	
200.0	200.0	202.0	202.0	0.3	0.3	-114.83	-41.9	-90.5	99.7	99.1	0.68	146.951 CC, ES	
300.0	300.0	302.0	302.0	0.6	0.6	151.26	-41.9	-90.5	101.3	100.2	1.12	90.252	
400.0	399.8	401.8	401.8	0.8	0.8	152.58	-41.9	-90.5	105.9	104.3	1.57	67.452	
500.0	499.5	501.5	501.5	1.0	1.0	154.54	-41.9	-90.5	113.7	111.7	2.03	56.037	
600.0	598.7	600.7	600.7	1.3	1.2	156.85	-41.9	-90.5	124.8	122.3	2.50	50.002	
700.0	697.5	699.5	699.5	1.6	1.5	159.27	-41.9	-90.5	139.4	136.4	2.97	46.933	
800.0	795.6	797.6	797.6	2.0	1.7	161.61	-41.9	-90.5	157.4	153.9	3.45	45.673	
900.0	893.1	895.1	895.1	2.5	1.9	163.78	-41.9	-90.5	178.7	174.8	3.92	45.560 SF	
1,000.0	990.4	992.4	992.4	2.9	2.1	165.62	-41.9	-90.5	201.1	196.6	4.40	45.690	
1,100.0	1,087.7	1,089.7	1,089.7	3.4	2.3	167.09	-41.9	-90.5	223.5	218.6	4.88	45.812	
1,200.0	1,185.0	1,187.0	1,187.0	3.9	2.6	168.29	-41.9	-90.5	246.1	240.7	5.36	45.923	
1,300.0	1,282.3	1,284.3	1,284.3	4.4	2.8	169.28	-41.9	-90.5	268.8	262.9	5.84	46.021	
1,400.0	1,379.6	1,381.6	1,381.6	4.9	3.0	170.13	-41.9	-90.5	291.5	285.2	6.32	46.108	
1,500.0	1,476.9	1,478.9	1,478.9	5.4	3.2	170.85	-41.9	-90.5	314.3	307.5	6.81	46.184	
1,600.0	1,574.2	1,576.2	1,576.2	5.9	3.4	171.47	-41.9	-90.5	337.1	329.8	7.29	46.251	
1,700.0	1,671.5	1,665.3	1,665.3	6.4	3.6	171.97	-42.0	-91.3	360.8	353.1	7.75	46.564	
1,800.0	1,768.8	1,750.5	1,750.5	6.9	3.8	172.37	-42.3	-94.5	387.3	379.1	8.20	47.254	
1,900.0	1,866.1	1,834.4	1,834.1	7.4	4.0	172.70	-42.9	-100.1	416.7	408.1	8.64	48.226	
2,000.0	1,963.4	1,916.6	1,916.0	7.9	4.1	172.97	-43.6	-107.9	448.9	439.8	9.08	49.416	
2,100.0	2,060.7	2,000.0	1,998.7	8.4	4.3	173.19	-44.7	-118.3	483.7	474.2	9.53	50.757	
2,200.0	2,158.0	2,080.0	2,077.8	8.9	4.5	173.36	-45.9	-130.3	521.0	511.1	9.97	52.241	
2,300.0	2,255.3	2,172.5	2,169.1	9.4	4.8	173.53	-47.4	-144.9	559.0	548.6	10.43	53.591	
2,400.0	2,352.6	2,265.0	2,260.5	9.9	5.0	173.68	-48.8	-159.4	597.0	586.2	10.89	54.821	

<b>Company:</b>	Bayswater Exploration & Production, LLC	<b>Local Co-ordinate Reference:</b>	Well Ivey P-11-2HN
<b>Project:</b>	SEC.11-T1S-R68W	<b>TVD Reference:</b>	WELL @ 5128.5ft (RKB - 22.5')
<b>Reference Site:</b>	Ivey Pad Sec.11-T1S-R68W	<b>MD Reference:</b>	WELL @ 5128.5ft (RKB - 22.5')
<b>Site Error:</b>	0.0ft	<b>North Reference:</b>	True
<b>Reference Well:</b>	Ivey P-11-2HN	<b>Survey Calculation Method:</b>	Minimum Curvature
<b>Well Error:</b>	0.0ft	<b>Output errors are at</b>	2.00 sigma
<b>Reference Wellbore</b>	Wellbore #1	<b>Database:</b>	landmark
<b>Reference Design:</b>	Plan #1 (9-4-14)	<b>Offset TVD Reference:</b>	Offset Datum

Offset Design Ivey Pad Sec.11-T1S-R68W - Ivey I-11-2HN - Wellbore #1 - Plan #1 (9-4-14)													Offset Site Error:	0.0 ft
Survey Program: 0-MWD													Offset Well Error:	0.0 ft
Reference		Offset		Semi Major Axis			Distance							
Measured Depth (ft)	Vertical Depth (ft)	Measured Depth (ft)	Vertical Depth (ft)	Reference (ft)	Offset (ft)	Highside Toolface (°)	Offset Wellbore Centre +N/-S (ft)	+E/-W (ft)	Between Centres (ft)	Between Ellipses (ft)	Minimum Separation (ft)	Separation Factor	Warning	
0.0	0.0	2.0	2.0	0.0	0.0	-120.25	-55.7	-95.6	110.6	110.6	0.00	N/A		
100.0	100.0	102.0	102.0	0.1	0.1	-120.25	-55.7	-95.6	110.6	110.4	0.23	482.563		
200.0	200.0	202.0	202.0	0.3	0.3	-120.25	-55.7	-95.6	110.6	110.0	0.68	162.985 CC, ES		
300.0	300.0	302.0	302.0	0.6	0.6	145.87	-55.7	-95.6	112.1	111.0	1.12	99.920		
400.0	399.8	401.8	401.8	0.8	0.8	147.27	-55.7	-95.6	116.4	114.9	1.57	74.194		
500.0	499.5	501.5	501.5	1.0	1.0	149.37	-55.7	-95.6	123.9	121.8	2.03	61.005		
600.0	598.7	600.7	600.7	1.3	1.2	151.91	-55.7	-95.6	134.5	132.0	2.50	53.766		
700.0	697.5	699.5	699.5	1.6	1.5	154.63	-55.7	-95.6	148.5	145.5	2.98	49.830		
800.0	795.6	797.6	797.6	2.0	1.7	157.31	-55.7	-95.6	166.0	162.5	3.46	47.923		
900.0	893.1	895.1	895.1	2.5	1.9	159.84	-55.7	-95.6	186.8	182.9	3.95	47.322		
1,000.0	990.4	992.4	992.4	2.9	2.1	162.02	-55.7	-95.6	208.7	204.3	4.43	47.108		
1,100.0	1,087.7	1,089.7	1,089.7	3.4	2.3	163.79	-55.7	-95.6	230.9	225.9	4.91	46.985		
1,200.0	1,185.0	1,187.0	1,187.0	3.9	2.6	165.24	-55.7	-95.6	253.1	247.7	5.40	46.915		
1,300.0	1,282.3	1,284.3	1,284.3	4.4	2.8	166.46	-55.7	-95.6	275.6	269.7	5.88	46.877		
1,400.0	1,379.6	1,381.6	1,381.6	4.9	3.0	167.50	-55.7	-95.6	298.1	291.7	6.36	46.859 SF		
1,500.0	1,476.9	1,470.9	1,470.9	5.4	3.2	168.33	-55.8	-96.4	321.7	314.8	6.82	47.155		
1,600.0	1,574.2	1,557.2	1,557.1	5.9	3.4	169.06	-56.0	-99.9	348.2	340.9	7.27	47.881		
1,700.0	1,671.5	1,641.9	1,641.7	6.4	3.5	169.69	-56.4	-105.8	377.6	369.9	7.72	48.925		
1,800.0	1,768.8	1,725.1	1,724.4	6.9	3.7	170.25	-56.9	-114.0	409.9	401.7	8.16	50.213		
1,900.0	1,866.1	1,800.0	1,798.7	7.4	3.9	170.68	-57.5	-123.4	445.0	436.4	8.59	51.782		
2,000.0	1,963.4	1,886.2	1,883.9	7.9	4.1	171.13	-58.3	-136.7	482.6	473.5	9.05	53.341		
2,100.0	2,060.7	1,966.2	1,962.5	8.4	4.3	171.49	-59.2	-151.2	522.7	513.2	9.49	55.066		
2,200.0	2,158.0	2,057.3	2,052.0	8.9	4.6	171.84	-60.3	-168.6	563.8	553.9	9.95	56.668		

<b>Company:</b>	Bayswater Exploration & Production, LLC	<b>Local Co-ordinate Reference:</b>	Well Ivey P-11-2HN
<b>Project:</b>	SEC.11-T1S-R68W	<b>TVD Reference:</b>	WELL @ 5128.5ft (RKB - 22.5')
<b>Reference Site:</b>	Ivey Pad Sec.11-T1S-R68W	<b>MD Reference:</b>	WELL @ 5128.5ft (RKB - 22.5')
<b>Site Error:</b>	0.0ft	<b>North Reference:</b>	True
<b>Reference Well:</b>	Ivey P-11-2HN	<b>Survey Calculation Method:</b>	Minimum Curvature
<b>Well Error:</b>	0.0ft	<b>Output errors are at</b>	2.00 sigma
<b>Reference Wellbore</b>	Wellbore #1	<b>Database:</b>	landmark
<b>Reference Design:</b>	Plan #1 (9-4-14)	<b>Offset TVD Reference:</b>	Offset Datum

<b>Offset Design</b> Ivey Pad Sec.11-T1S-R68W - Ivey J-11-2HN - Wellbore #1 - Plan #1 (9-4-14)												<b>Offset Site Error:</b>	0.0 ft
Survey Program: 0-MWD												<b>Offset Well Error:</b>	0.0 ft
Reference	Offset	Semi Major Axis		Distance									
Measured Depth (ft)	Vertical Depth (ft)	Measured Depth (ft)	Vertical Depth (ft)	Reference (ft)	Offset (ft)	Highside Toolface (°)	Offset Wellbore Centre +N/-S (ft)	+E/-W (ft)	Between Centres (ft)	Between Ellipses (ft)	Minimum Separation (ft)	Separation Factor	Warning
0.0	0.0	2.0	2.0	0.0	0.0	-108.00	-27.7	-85.2	89.6	89.6	0.00	N/A	
100.0	100.0	102.0	102.0	0.1	0.1	-108.00	-27.7	-85.2	89.6	89.4	0.23	390.759	
200.0	200.0	202.0	202.0	0.3	0.3	-108.00	-27.7	-85.2	89.6	88.9	0.68	131.978 CC, ES	
300.0	300.0	302.0	302.0	0.6	0.6	158.03	-27.7	-85.2	91.2	90.1	1.12	81.236	
400.0	399.8	401.8	401.8	0.8	0.8	159.17	-27.7	-85.2	96.1	94.5	1.57	61.180	
500.0	499.5	501.5	501.5	1.0	1.0	160.82	-27.7	-85.2	104.3	102.2	2.03	51.426	
600.0	598.7	600.7	600.7	1.3	1.2	162.73	-27.7	-85.2	115.9	113.4	2.49	46.512	
700.0	697.5	699.5	699.5	1.6	1.5	164.68	-27.7	-85.2	130.9	127.9	2.96	44.244	
800.0	795.6	797.6	797.6	2.0	1.7	166.52	-27.7	-85.2	149.4	146.0	3.43	43.573 SF	
900.0	893.1	895.1	895.1	2.5	1.9	168.20	-27.7	-85.2	171.2	167.3	3.90	43.898	
1,000.0	990.4	992.4	992.4	2.9	2.1	169.60	-27.7	-85.2	193.9	189.5	4.37	44.337	
1,100.0	1,087.7	1,089.7	1,089.7	3.4	2.3	170.70	-27.7	-85.2	216.6	211.8	4.85	44.681	
1,200.0	1,185.0	1,187.0	1,187.0	3.9	2.6	171.59	-27.7	-85.2	239.5	234.1	5.33	44.954	
1,300.0	1,282.3	1,284.3	1,284.3	4.4	2.8	172.33	-27.7	-85.2	262.3	256.5	5.81	45.176	
1,400.0	1,379.6	1,381.6	1,381.6	4.9	3.0	172.95	-27.7	-85.2	285.2	278.9	6.29	45.359	
1,500.0	1,476.9	1,478.9	1,478.9	5.4	3.2	173.47	-27.7	-85.2	308.2	301.4	6.77	45.512	
1,600.0	1,574.2	1,576.2	1,576.2	5.9	3.4	173.93	-27.7	-85.2	331.1	323.9	7.25	45.641	
1,700.0	1,671.5	1,673.5	1,673.5	6.4	3.6	174.32	-27.7	-85.2	354.1	346.3	7.74	45.751	
1,800.0	1,768.8	1,770.8	1,770.8	6.9	3.9	174.67	-27.7	-85.2	377.1	368.8	8.22	45.846	
1,900.0	1,866.1	1,859.8	1,859.8	7.4	4.1	174.94	-27.8	-85.8	400.8	392.1	8.69	46.143	
2,000.0	1,963.4	1,944.2	1,944.2	7.9	4.2	175.11	-28.3	-88.8	427.2	418.0	9.13	46.780	
2,100.0	2,060.7	2,027.2	2,027.0	8.4	4.4	175.22	-29.2	-94.1	456.4	446.8	9.57	47.672	
2,200.0	2,158.0	2,111.2	2,110.6	8.9	4.6	175.26	-30.4	-101.8	488.2	478.2	10.02	48.714	
2,300.0	2,255.3	2,205.7	2,204.6	9.4	4.8	175.29	-32.0	-111.4	521.0	510.5	10.48	49.715	
2,400.0	2,352.6	2,300.1	2,298.5	9.9	5.0	175.31	-33.6	-120.9	553.7	542.8	10.94	50.618	
2,500.0	2,449.9	2,394.6	2,392.5	10.4	5.2	175.34	-35.2	-130.5	586.4	575.0	11.40	51.435	

<b>Company:</b>	Bayswater Exploration & Production, LLC	<b>Local Co-ordinate Reference:</b>	Well Ivey P-11-2HN
<b>Project:</b>	SEC.11-T1S-R68W	<b>TVD Reference:</b>	WELL @ 5128.5ft (RKB - 22.5')
<b>Reference Site:</b>	Ivey Pad Sec.11-T1S-R68W	<b>MD Reference:</b>	WELL @ 5128.5ft (RKB - 22.5')
<b>Site Error:</b>	0.0ft	<b>North Reference:</b>	True
<b>Reference Well:</b>	Ivey P-11-2HN	<b>Survey Calculation Method:</b>	Minimum Curvature
<b>Well Error:</b>	0.0ft	<b>Output errors are at</b>	2.00 sigma
<b>Reference Wellbore</b>	Wellbore #1	<b>Database:</b>	landmark
<b>Reference Design:</b>	Plan #1 (9-4-14)	<b>Offset TVD Reference:</b>	Offset Datum

Offset Design Ivey Pad Sec.11-T1S-R68W - Ivey K-11-2HN - Wellbore #1 - Plan #1 (9-4-14)													Offset Site Error:	0.0 ft
Survey Program: 0-MWD													Offset Well Error:	0.0 ft
Reference		Offset		Semi Major Axis			Distance							
Measured Depth	Vertical Depth	Measured Depth	Vertical Depth	Reference	Offset	Highside Toolface	Offset Wellbore Centre		Between Centres	Between Ellipses	Minimum Separation	Separation Factor	Warning	
(ft)	(ft)	(ft)	(ft)	(ft)	(ft)	(°)	+N/-S (ft)	+E/-W (ft)	(ft)	(ft)	(ft)			
0.0	0.0	1.0	1.0	0.0	0.0	-99.55	-13.5	-80.2	81.3	81.3	0.00	N/A		
100.0	100.0	101.0	101.0	0.1	0.1	-99.55	-13.5	-80.2	81.3	81.1	0.23	358.045		
200.0	200.0	201.0	201.0	0.3	0.3	-99.55	-13.5	-80.2	81.3	80.6	0.68	120.141 CC, ES		
300.0	300.0	301.0	301.0	0.6	0.6	166.37	-13.5	-80.2	83.0	81.9	1.12	74.023		
400.0	399.8	400.8	400.8	0.8	0.8	167.15	-13.5	-80.2	88.1	86.5	1.57	56.151		
500.0	499.5	500.5	500.5	1.0	1.0	168.26	-13.5	-80.2	96.6	94.6	2.02	47.727		
600.0	598.7	599.7	599.7	1.3	1.2	169.53	-13.5	-80.2	108.6	106.1	2.48	43.708		
700.0	697.5	698.5	698.5	1.6	1.5	170.79	-13.5	-80.2	124.0	121.0	2.95	42.075		
800.0	795.6	796.6	796.6	2.0	1.7	171.96	-13.5	-80.2	142.8	139.4	3.41	41.868 SF		
900.0	893.1	894.1	894.1	2.5	1.9	173.01	-13.5	-80.2	165.0	161.1	3.88	42.536		
1,000.0	990.4	991.4	991.4	2.9	2.1	173.86	-13.5	-80.2	187.9	183.6	4.35	43.216		
1,100.0	1,087.7	1,088.7	1,088.7	3.4	2.3	174.54	-13.5	-80.2	210.9	206.1	4.82	43.732		
1,200.0	1,185.0	1,186.0	1,186.0	3.9	2.6	175.07	-13.5	-80.2	233.9	228.6	5.30	44.134		
1,300.0	1,282.3	1,283.3	1,283.3	4.4	2.8	175.52	-13.5	-80.2	256.9	251.1	5.78	44.454		
1,400.0	1,379.6	1,380.6	1,380.6	4.9	3.0	175.89	-13.5	-80.2	279.9	273.7	6.26	44.714		
1,500.0	1,476.9	1,477.9	1,477.9	5.4	3.2	176.20	-13.5	-80.2	303.0	296.2	6.74	44.929		
1,600.0	1,574.2	1,575.2	1,575.2	5.9	3.4	176.47	-13.5	-80.2	326.0	318.8	7.23	45.109		
1,700.0	1,671.5	1,672.5	1,672.5	6.4	3.6	176.70	-13.5	-80.2	349.0	341.3	7.71	45.262		
1,800.0	1,768.8	1,769.8	1,769.8	6.9	3.9	176.91	-13.5	-80.2	372.1	363.9	8.20	45.392		
1,900.0	1,866.1	1,867.1	1,867.1	7.4	4.1	177.09	-13.5	-80.2	395.1	386.5	8.68	45.505		
2,000.0	1,963.4	1,964.4	1,964.4	7.9	4.3	177.25	-13.5	-80.2	418.2	409.0	9.17	45.604		
2,100.0	2,060.7	2,054.8	2,054.8	8.4	4.5	177.34	-13.8	-80.6	441.7	432.1	9.63	45.861		
2,200.0	2,158.0	2,140.3	2,140.3	8.9	4.7	177.24	-15.4	-83.0	467.5	457.4	10.07	46.403		
2,300.0	2,255.3	2,224.6	2,224.4	9.4	4.8	176.98	-18.3	-87.5	495.6	485.1	10.51	47.147		
2,400.0	2,352.6	2,316.0	2,315.4	9.9	5.0	176.59	-22.7	-94.1	525.5	514.6	10.97	47.927		
2,500.0	2,449.9	2,411.3	2,410.4	10.4	5.2	176.22	-27.3	-101.1	555.6	544.2	11.42	48.632		
2,600.0	2,547.2	2,506.6	2,505.3	10.9	5.4	175.89	-31.9	-108.1	585.7	573.8	11.89	49.264		

<b>Company:</b>	Bayswater Exploration & Production, LLC	<b>Local Co-ordinate Reference:</b>	Well Ivey P-11-2HN
<b>Project:</b>	SEC.11-T1S-R68W	<b>TVD Reference:</b>	WELL @ 5128.5ft (RKB - 22.5')
<b>Reference Site:</b>	Ivey Pad Sec.11-T1S-R68W	<b>MD Reference:</b>	WELL @ 5128.5ft (RKB - 22.5')
<b>Site Error:</b>	0.0ft	<b>North Reference:</b>	True
<b>Reference Well:</b>	Ivey P-11-2HN	<b>Survey Calculation Method:</b>	Minimum Curvature
<b>Well Error:</b>	0.0ft	<b>Output errors are at</b>	2.00 sigma
<b>Reference Wellbore</b>	Wellbore #1	<b>Database:</b>	landmark
<b>Reference Design:</b>	Plan #1 (9-4-14)	<b>Offset TVD Reference:</b>	Offset Datum

<b>Offset Design</b> Ivey Pad Sec.11-T1S-R68W - Ivey L-11-2HN - Wellbore #1 - Plan #1 (9-4-14)												<b>Offset Site Error:</b>	0.0 ft
Survey Program: 0-MWD												<b>Offset Well Error:</b>	0.0 ft
Reference		Offset		Semi Major Axis			Distance						
Measured Depth (ft)	Vertical Depth (ft)	Measured Depth (ft)	Vertical Depth (ft)	Reference (ft)	Offset (ft)	Highside Toolface (°)	Offset Wellbore Centre +N/-S (ft)	+E/-W (ft)	Between Centres (ft)	Between Ellipses (ft)	Minimum Separation (ft)	Separation Factor	Warning
0.0	0.0	1.0	1.0	0.0	0.0	-89.44	0.7	-75.1	75.1	75.1	0.00	N/A	
100.0	100.0	101.0	101.0	0.1	0.1	-89.44	0.7	-75.1	75.1	74.9	0.23	330.881	
200.0	200.0	201.0	201.0	0.3	0.3	-89.44	0.7	-75.1	75.1	74.4	0.68	111.027 CC, ES	
300.0	300.0	301.0	301.0	0.6	0.6	176.27	0.7	-75.1	76.9	75.7	1.12	68.546	
400.0	399.8	400.8	400.8	0.8	0.8	176.50	0.7	-75.1	82.1	80.5	1.57	52.331	
500.0	499.5	500.5	500.5	1.0	1.0	176.83	0.7	-75.1	90.8	88.8	2.02	44.889	
600.0	598.7	599.7	599.7	1.3	1.2	177.19	0.7	-75.1	102.9	100.5	2.48	41.517	
700.0	697.5	698.5	698.5	1.6	1.5	177.55	0.7	-75.1	118.6	115.6	2.94	40.336 SF	
800.0	795.6	796.6	796.6	2.0	1.7	177.88	0.7	-75.1	137.6	134.2	3.40	40.457	
900.0	893.1	894.1	894.1	2.5	1.9	178.16	0.7	-75.1	159.9	156.1	3.87	41.367	
1,000.0	990.4	991.4	991.4	2.9	2.1	178.39	0.7	-75.1	183.0	178.7	4.33	42.222	
1,100.0	1,087.7	1,088.7	1,088.7	3.4	2.3	178.57	0.7	-75.1	206.1	201.3	4.81	42.869	
1,200.0	1,185.0	1,186.0	1,186.0	3.9	2.6	178.72	0.7	-75.1	229.2	223.9	5.28	43.371	
1,300.0	1,282.3	1,283.3	1,283.3	4.4	2.8	178.83	0.7	-75.1	252.3	246.5	5.76	43.770	
1,400.0	1,379.6	1,380.6	1,380.6	4.9	3.0	178.93	0.7	-75.1	275.3	269.1	6.24	44.094	
1,500.0	1,476.9	1,477.9	1,477.9	5.4	3.2	179.01	0.7	-75.1	298.4	291.7	6.73	44.362	
1,600.0	1,574.2	1,575.2	1,575.2	5.9	3.4	179.09	0.7	-75.1	321.5	314.3	7.21	44.586	
1,700.0	1,671.5	1,672.5	1,672.5	6.4	3.6	179.15	0.7	-75.1	344.6	336.9	7.70	44.776	
1,800.0	1,768.8	1,769.8	1,769.8	6.9	3.9	179.20	0.7	-75.1	367.7	359.5	8.18	44.939	
1,900.0	1,866.1	1,867.1	1,867.1	7.4	4.1	179.25	0.7	-75.1	390.7	382.1	8.67	45.081	
2,000.0	1,963.4	1,964.4	1,964.4	7.9	4.3	179.29	0.7	-75.1	413.8	404.7	9.15	45.204	
2,100.0	2,060.7	2,061.7	2,061.7	8.4	4.5	179.33	0.7	-75.1	436.9	427.3	9.64	45.312	
2,200.0	2,158.0	2,159.0	2,159.0	8.9	4.7	179.36	0.7	-75.1	460.0	449.9	10.13	45.409	
2,300.0	2,255.3	2,256.3	2,256.3	9.4	5.0	179.39	0.7	-75.1	483.1	472.5	10.62	45.494	
2,400.0	2,352.6	2,353.6	2,353.6	9.9	5.2	179.42	0.7	-75.1	506.2	495.1	11.11	45.571	
2,500.0	2,449.9	2,450.9	2,450.9	10.4	5.4	179.44	0.7	-75.1	529.2	517.6	11.60	45.640	
2,600.0	2,547.2	2,558.2	2,558.2	10.9	5.6	179.44	0.4	-74.6	551.9	539.8	12.09	45.634	
2,700.0	2,644.5	2,677.1	2,676.9	11.4	5.9	179.25	-2.1	-70.4	571.4	558.8	12.59	45.393	
2,800.0	2,741.8	2,792.4	2,791.9	11.9	6.1	178.86	-6.8	-62.3	587.3	574.3	13.07	44.925	



<b>Company:</b>	Bayswater Exploration & Production, LLC	<b>Local Co-ordinate Reference:</b>	Well Ivey P-11-2HN
<b>Project:</b>	SEC.11-T1S-R68W	<b>TVD Reference:</b>	WELL @ 5128.5ft (RKB - 22.5')
<b>Reference Site:</b>	Ivey Pad Sec.11-T1S-R68W	<b>MD Reference:</b>	WELL @ 5128.5ft (RKB - 22.5')
<b>Site Error:</b>	0.0ft	<b>North Reference:</b>	True
<b>Reference Well:</b>	Ivey P-11-2HN	<b>Survey Calculation Method:</b>	Minimum Curvature
<b>Well Error:</b>	0.0ft	<b>Output errors are at</b>	2.00 sigma
<b>Reference Wellbore</b>	Wellbore #1	<b>Database:</b>	landmark
<b>Reference Design:</b>	Plan #1 (9-4-14)	<b>Offset TVD Reference:</b>	Offset Datum

<b>Offset Design</b> Ivey Pad Sec.11-T1S-R68W - Ivey M-11-12HC - Wellbore #1 - Plan #1 (7-02-14)												<b>Offset Site Error:</b>	0.0 ft
Survey Program: 0-MWD												<b>Offset Well Error:</b>	0.0 ft
Reference	Offset	Semi Major Axis		Distance									
Measured Depth (ft)	Vertical Depth (ft)	Measured Depth (ft)	Vertical Depth (ft)	Reference (ft)	Offset (ft)	Highside Toolface (°)	Offset Wellbore Centre +N/-S (ft)	+E/-W (ft)	Between Centres (ft)	Between Ellipses (ft)	Minimum Separation (ft)	Separation Factor	Warning
0.0	0.0	2.0	2.0	0.0	0.0	-131.44	-98.0	-111.0	148.1	148.1	0.00	N/A	
100.0	100.0	102.0	102.0	0.1	0.1	-131.44	-98.0	-111.0	148.1	147.8	0.23	645.791	
200.0	200.0	202.0	202.0	0.3	0.3	-131.44	-98.0	-111.0	148.1	147.4	0.68	218.115 CC, ES	
300.0	300.0	302.0	302.0	0.6	0.6	134.65	-98.0	-111.0	149.3	148.2	1.12	133.228	
400.0	399.8	401.8	401.8	0.8	0.8	135.99	-98.0	-111.0	153.0	151.4	1.57	97.566	
500.0	499.5	501.5	501.5	1.0	1.0	138.08	-98.0	-111.0	159.4	157.4	2.03	78.387	
600.0	598.7	600.7	600.7	1.3	1.2	140.72	-98.0	-111.0	168.7	166.2	2.51	67.071	
700.0	697.5	699.5	699.5	1.6	1.5	143.69	-98.0	-111.0	181.1	178.1	3.01	60.158	
800.0	795.6	797.6	797.6	2.0	1.7	146.79	-98.0	-111.0	196.9	193.4	3.52	55.995	
900.0	893.1	888.9	888.9	2.5	1.9	149.83	-98.1	-112.4	217.4	213.4	4.01	54.241	
1,000.0	990.4	978.3	978.2	2.9	2.1	152.77	-98.2	-116.5	242.0	237.5	4.49	53.921	
1,100.0	1,087.7	1,066.1	1,065.7	3.4	2.3	155.33	-98.5	-123.3	270.1	265.1	4.96	54.434	
1,200.0	1,185.0	1,152.1	1,151.2	3.9	2.5	157.53	-99.0	-132.6	301.4	296.0	5.43	55.531	
1,300.0	1,282.3	1,236.2	1,234.5	4.4	2.7	159.42	-99.5	-144.1	335.9	330.0	5.89	57.038	
1,400.0	1,379.6	1,318.4	1,315.6	4.9	2.9	161.03	-100.1	-157.7	373.3	366.9	6.35	58.806	
1,500.0	1,476.9	1,407.4	1,403.0	5.4	3.2	162.52	-100.8	-174.2	412.8	406.0	6.81	60.621	
1,600.0	1,574.2	1,498.7	1,492.8	5.9	3.5	163.79	-101.6	-191.2	452.5	445.3	7.27	62.277	
1,700.0	1,671.5	1,590.1	1,582.5	6.4	3.9	164.86	-102.4	-208.2	492.4	484.7	7.73	63.725	
1,800.0	1,768.8	1,681.4	1,672.2	6.9	4.2	165.76	-103.1	-225.2	532.5	524.3	8.19	65.007	
1,900.0	1,866.1	1,772.7	1,762.0	7.4	4.5	166.54	-103.9	-242.2	572.6	563.9	8.66	66.093	
7,600.0	7,418.2	10,485.3	7,987.0	31.9	69.4	180.00	-166.0	1,426.2	590.5	502.9	87.57	6.743	
7,700.0	7,499.0	10,485.3	7,987.0	32.0	69.4	180.00	-166.0	1,426.2	535.3	454.9	80.38	6.660 SF	
7,800.0	7,570.9	10,485.3	7,987.0	32.1	69.4	180.00	-166.0	1,426.2	507.8	435.8	72.04	7.049	
7,834.1	7,593.1	10,485.3	7,987.0	32.1	69.4	180.00	-166.0	1,426.2	505.9	436.9	69.00	7.332	
7,900.0	7,632.3	10,485.3	7,987.0	32.2	69.4	180.00	-166.0	1,426.2	513.2	450.2	62.90	8.158	
8,000.0	7,682.2	10,485.3	7,987.0	32.4	69.4	180.00	-166.0	1,426.2	550.2	496.7	53.46	10.291	



<b>Company:</b>	Bayswater Exploration & Production, LLC	<b>Local Co-ordinate Reference:</b>	Well Ivey P-11-2HN
<b>Project:</b>	SEC.11-T1S-R68W	<b>TVD Reference:</b>	WELL @ 5128.5ft (RKB - 22.5')
<b>Reference Site:</b>	Ivey Pad Sec.11-T1S-R68W	<b>MD Reference:</b>	WELL @ 5128.5ft (RKB - 22.5')
<b>Site Error:</b>	0.0ft	<b>North Reference:</b>	True
<b>Reference Well:</b>	Ivey P-11-2HN	<b>Survey Calculation Method:</b>	Minimum Curvature
<b>Well Error:</b>	0.0ft	<b>Output errors are at</b>	2.00 sigma
<b>Reference Wellbore</b>	Wellbore #1	<b>Database:</b>	landmark
<b>Reference Design:</b>	Plan #1 (9-4-14)	<b>Offset TVD Reference:</b>	Offset Datum

Offset Design Ivey Pad Sec.11-T1S-R68W - Ivey M-11-12HN - Wellbore #1 - Plan #2 (9-4-14)												Offset Site Error:	0.0 ft
Survey Program: 0-MWD												Offset Well Error:	0.0 ft
Reference	Offset	Semi Major Axis		Distance		Warning							
Measured Depth (ft)	Vertical Depth (ft)	Measured Depth (ft)	Vertical Depth (ft)	Reference (ft)	Offset (ft)	Highside Toolface (°)	Offset Wellbore Centre +N/-S (ft)	+E/-W (ft)	Between Centres (ft)	Between Ellipses (ft)	Minimum Separation (ft)	Separation Factor	
0.0	0.0	2.0	2.0	0.0	0.0	-128.46	-84.2	-105.9	135.3	135.3	0.00	N/A	
100.0	100.0	102.0	102.0	0.1	0.1	-128.46	-84.2	-105.9	135.3	135.1	0.23	590.143	
200.0	200.0	202.0	202.0	0.3	0.3	-128.46	-84.2	-105.9	135.3	134.6	0.68	199.320 CC, ES	
300.0	300.0	302.0	302.0	0.6	0.6	137.65	-84.2	-105.9	136.6	135.5	1.12	121.863	
400.0	399.8	401.8	401.8	0.8	0.8	139.03	-84.2	-105.9	140.5	138.9	1.57	89.570	
500.0	499.5	501.5	501.5	1.0	1.0	141.17	-84.2	-105.9	147.2	145.2	2.03	72.416	
600.0	598.7	600.7	600.7	1.3	1.2	143.84	-84.2	-105.9	156.9	154.4	2.51	62.477	
700.0	697.5	699.5	699.5	1.6	1.5	146.80	-84.2	-105.9	169.8	166.8	3.00	56.574	
800.0	795.6	797.6	797.6	2.0	1.7	149.84	-84.2	-105.9	186.1	182.6	3.50	53.181	
900.0	893.1	895.1	895.1	2.5	1.9	152.82	-84.2	-105.9	205.8	201.8	4.00	51.443	
1,000.0	990.4	992.4	992.4	2.9	2.1	155.48	-84.2	-105.9	226.7	222.2	4.50	50.410	
1,100.0	1,087.7	1,083.0	1,083.0	3.4	2.3	157.65	-84.1	-107.1	249.2	244.2	4.97	50.128	
1,200.0	1,185.0	1,171.6	1,171.5	3.9	2.5	159.65	-83.7	-111.1	274.8	269.4	5.44	50.567	
1,300.0	1,282.3	1,258.6	1,258.2	4.4	2.7	161.47	-83.2	-117.6	303.6	297.7	5.89	51.520	
1,400.0	1,379.6	1,343.8	1,343.0	4.9	2.9	163.10	-82.5	-126.5	335.3	329.0	6.34	52.854	
1,500.0	1,476.9	1,427.3	1,425.7	5.4	3.1	164.55	-81.7	-137.6	370.0	363.2	6.79	54.472	
1,600.0	1,574.2	1,508.8	1,506.1	5.9	3.3	165.84	-80.6	-150.9	407.5	400.3	7.24	56.305	
1,700.0	1,671.5	1,588.3	1,584.2	6.4	3.6	166.97	-79.4	-165.9	447.7	440.0	7.68	58.295	
1,800.0	1,768.8	1,668.0	1,662.0	6.9	3.9	167.99	-78.1	-183.2	490.5	482.4	8.13	60.345	
1,900.0	1,866.1	1,757.6	1,749.3	7.4	4.2	168.99	-76.5	-203.4	534.2	525.7	8.58	62.252	
2,000.0	1,963.4	1,847.2	1,836.5	7.9	4.6	169.83	-74.9	-223.5	578.1	569.1	9.03	63.997	
7,400.0	7,236.1	10,277.5	7,748.2	31.8	69.9	178.40	-1.0	1,428.5	516.3	418.2	98.14	5.261	
7,500.0	7,330.0	10,277.2	7,748.2	31.8	69.9	179.35	-1.0	1,428.2	418.7	324.7	93.99	4.455	
7,600.0	7,418.2	10,276.9	7,748.2	31.9	69.9	179.63	-1.0	1,427.9	327.9	239.7	88.20	3.718	
7,700.0	7,499.0	10,276.6	7,748.2	32.0	69.9	179.76	-1.0	1,427.6	254.2	173.2	81.01	3.138	
7,800.0	7,570.9	10,276.4	7,748.2	32.1	69.9	179.84	-1.0	1,427.4	217.6	144.9	72.65	2.995 SF	
7,816.3	7,581.7	10,276.3	7,748.2	32.1	69.9	179.85	-1.0	1,427.3	216.8	145.6	71.20	3.045	
7,900.0	7,632.3	10,276.1	7,748.2	32.2	69.9	179.89	-1.0	1,427.1	236.9	173.4	63.47	3.732	
8,000.0	7,682.2	10,276.0	7,748.2	32.4	69.9	179.93	-1.0	1,427.0	301.2	247.2	53.97	5.581	
8,100.0	7,719.4	10,275.9	7,748.2	32.6	69.9	179.96	-1.0	1,426.9	387.9	343.0	44.92	8.637	
8,200.0	7,743.4	10,275.8	7,748.2	32.9	69.9	179.99	-1.0	1,426.8	484.0	446.4	37.62	12.868	
8,300.0	7,753.6	10,275.7	7,748.2	33.2	69.9	-179.90	-1.0	1,426.7	583.5	549.5	33.94	17.191	

<b>Company:</b>	Bayswater Exploration & Production, LLC	<b>Local Co-ordinate Reference:</b>	Well Ivey P-11-2HN
<b>Project:</b>	SEC.11-T1S-R68W	<b>TVD Reference:</b>	WELL @ 5128.5ft (RKB - 22.5')
<b>Reference Site:</b>	Ivey Pad Sec.11-T1S-R68W	<b>MD Reference:</b>	WELL @ 5128.5ft (RKB - 22.5')
<b>Site Error:</b>	0.0ft	<b>North Reference:</b>	True
<b>Reference Well:</b>	Ivey P-11-2HN	<b>Survey Calculation Method:</b>	Minimum Curvature
<b>Well Error:</b>	0.0ft	<b>Output errors are at</b>	2.00 sigma
<b>Reference Wellbore</b>	Wellbore #1	<b>Database:</b>	landmark
<b>Reference Design:</b>	Plan #1 (9-4-14)	<b>Offset TVD Reference:</b>	Offset Datum

Offset Design Ivey Pad Sec.11-T1S-R68W - Ivey M-11-2HC - Wellbore #1 - Plan #1 (9-4-14)													Offset Site Error:	0.0 ft
Survey Program: 0-MWD													Offset Well Error:	0.0 ft
Reference		Offset		Semi Major Axis			Distance							Warning
Measured Depth (ft)	Vertical Depth (ft)	Measured Depth (ft)	Vertical Depth (ft)	Reference (ft)	Offset (ft)	Highside Toolface (°)	Offset Wellbore Centre +N/-S (ft)	+E/-W (ft)	Between Centres (ft)	Between Ellipses (ft)	Minimum Separation (ft)	Separation Factor		
0.0	0.0	0.0	0.0	0.0	0.0	-89.53	0.4	-45.1	45.1					
100.0	100.0	100.0	100.0	0.1	0.1	-89.53	0.4	-45.1	45.1	44.9	0.22	200.760		
200.0	200.0	200.0	200.0	0.3	0.3	-89.53	0.4	-45.1	45.1	44.4	0.67	66.920 CC, ES		
300.0	300.0	300.0	300.0	0.6	0.6	176.24	0.4	-45.1	46.9	45.7	1.12	41.881		
400.0	399.8	399.8	399.8	0.8	0.8	176.61	0.4	-45.1	52.1	50.5	1.57	33.256		
500.0	499.5	499.5	499.5	1.0	1.0	177.09	0.4	-45.1	60.8	58.8	2.02	30.093		
600.0	598.7	598.7	598.7	1.3	1.2	177.56	0.4	-45.1	73.0	70.5	2.48	29.452		
700.0	697.5	697.5	697.5	1.6	1.5	177.98	0.4	-45.1	88.6	85.7	2.94	30.162		
800.0	795.6	795.6	795.6	2.0	1.7	178.33	0.4	-45.1	107.7	104.3	3.40	31.670		
900.0	893.1	893.1	893.1	2.5	1.9	178.61	0.4	-45.1	130.0	126.1	3.86	33.639		
1,000.0	990.4	990.4	990.4	2.9	2.1	178.82	0.4	-45.1	153.1	148.7	4.33	35.333		
1,100.0	1,087.7	1,093.4	1,093.4	3.4	2.3	178.93	0.1	-43.6	174.7	169.9	4.80	36.431		
1,200.0	1,185.0	1,198.4	1,198.3	3.9	2.5	178.89	-0.8	-38.3	192.8	187.6	5.25	36.730		
1,300.0	1,282.3	1,304.8	1,304.2	4.4	2.8	178.74	-2.3	-29.1	207.4	201.6	5.72	36.245		
1,400.0	1,379.6	1,409.6	1,408.2	4.9	3.0	178.51	-4.4	-16.4	218.4	212.2	6.20	35.215		
1,500.0	1,476.9	1,509.1	1,506.8	5.4	3.3	178.28	-6.6	-3.5	228.5	221.8	6.69	34.171		
1,600.0	1,574.2	1,608.6	1,605.5	5.9	3.6	178.07	-8.8	9.5	238.6	231.4	7.18	33.243		
1,700.0	1,671.5	1,708.1	1,704.1	6.4	3.8	177.87	-10.9	22.4	248.7	241.0	7.67	32.415		
1,800.0	1,768.8	1,807.5	1,802.7	6.9	4.1	177.70	-13.1	35.4	258.8	250.7	8.17	31.672		
1,900.0	1,866.1	1,907.0	1,901.3	7.4	4.4	177.53	-15.2	48.3	269.0	260.3	8.68	31.005		
2,000.0	1,963.4	2,006.5	1,999.9	7.9	4.7	177.38	-17.4	61.3	279.1	269.9	9.18	30.401		
2,100.0	2,060.7	2,106.0	2,098.5	8.4	5.0	177.24	-19.6	74.2	289.2	279.5	9.69	29.852		
2,200.0	2,158.0	2,205.5	2,197.1	8.9	5.3	177.11	-21.7	87.2	299.4	289.2	10.20	29.352		
2,300.0	2,255.3	2,305.0	2,295.7	9.4	5.7	176.98	-23.9	100.2	309.5	298.8	10.71	28.896		
2,400.0	2,352.6	2,404.4	2,394.4	9.9	6.0	176.87	-26.1	113.1	319.6	308.4	11.22	28.477		
2,500.0	2,449.9	2,503.9	2,493.0	10.4	6.3	176.76	-28.2	126.1	329.8	318.0	11.74	28.091		
2,600.0	2,547.2	2,603.4	2,591.6	10.9	6.6	176.66	-30.4	139.0	339.9	327.7	12.26	27.735		
2,700.0	2,644.5	2,702.9	2,690.2	11.4	6.9	176.56	-32.6	152.0	350.0	337.3	12.77	27.405		
2,800.0	2,741.8	2,802.4	2,788.8	11.9	7.2	176.47	-34.7	164.9	360.2	346.9	13.29	27.100		
2,900.0	2,839.1	2,901.9	2,887.4	12.4	7.6	176.38	-36.9	177.9	370.3	356.5	13.81	26.815		
3,000.0	2,936.4	3,001.3	2,986.0	12.9	7.9	176.30	-39.1	190.8	380.5	366.1	14.33	26.550		
3,100.0	3,033.7	3,100.8	3,084.6	13.4	8.2	176.23	-41.2	203.8	390.6	375.8	14.85	26.302		
3,200.0	3,131.0	3,200.3	3,183.3	13.9	8.5	176.15	-43.4	216.8	400.8	385.4	15.37	26.070		
3,300.0	3,228.3	3,299.8	3,281.9	14.4	8.9	176.08	-45.6	229.7	410.9	395.0	15.89	25.852		
3,400.0	3,325.6	3,399.3	3,380.5	14.9	9.2	176.02	-47.7	242.7	421.0	404.6	16.42	25.647		
3,500.0	3,422.9	3,498.8	3,479.1	15.4	9.5	175.96	-49.9	255.6	431.2	414.2	16.94	25.454		
3,600.0	3,520.2	3,598.2	3,577.7	15.9	9.8	175.90	-52.0	268.6	441.3	423.9	17.46	25.271		
3,700.0	3,617.5	3,697.7	3,676.3	16.4	10.2	175.84	-54.2	281.5	451.5	433.5	17.99	25.099		
3,800.0	3,714.8	3,797.2	3,774.9	16.9	10.5	175.78	-56.4	294.5	461.6	443.1	18.51	24.937		
3,900.0	3,812.1	3,896.7	3,873.5	17.4	10.8	175.73	-58.5	307.4	471.8	452.7	19.04	24.782		
4,000.0	3,909.4	3,996.2	3,972.1	17.9	11.2	175.68	-60.7	320.4	481.9	462.4	19.56	24.636		
4,100.0	4,006.7	4,095.7	4,070.8	18.4	11.5	175.63	-62.9	333.4	492.1	472.0	20.09	24.496		
4,200.0	4,104.0	4,195.1	4,169.4	18.9	11.8	175.59	-65.0	346.3	502.2	481.6	20.61	24.364		
4,300.0	4,201.3	4,294.6	4,268.0	19.4	12.2	175.54	-67.2	359.3	512.4	491.2	21.14	24.238		
4,400.0	4,298.6	4,394.1	4,366.6	19.9	12.5	175.50	-69.4	372.2	522.5	500.8	21.67	24.117		
4,500.0	4,395.9	4,493.6	4,465.2	20.4	12.8	175.46	-71.5	385.2	532.7	510.5	22.19	24.003		
4,600.0	4,493.2	4,593.1	4,563.8	20.9	13.2	175.42	-73.7	398.1	542.8	520.1	22.72	23.893		
4,700.0	4,590.5	4,692.5	4,662.4	21.4	13.5	175.38	-75.9	411.1	553.0	529.7	23.25	23.788		
4,800.0	4,687.8	4,792.0	4,761.0	21.9	13.8	175.34	-78.0	424.0	563.1	539.3	23.77	23.687		
4,900.0	4,785.1	4,891.5	4,859.7	22.4	14.1	175.31	-80.2	437.0	573.3	549.0	24.30	23.591		
5,000.0	4,882.4	4,991.0	4,958.3	22.9	14.5	175.27	-82.3	450.0	583.4	558.6	24.83	23.498		
5,100.0	4,979.7	5,090.5	5,056.9	23.4	14.8	175.24	-84.5	462.9	593.6	568.2	25.36	23.410 SF		

CC - Min centre to center distance or convergent point, SF - min separation factor, ES - min ellipse separation

<b>Company:</b>	Bayswater Exploration & Production, LLC	<b>Local Co-ordinate Reference:</b>	Well Ivey P-11-2HN
<b>Project:</b>	SEC.11-T1S-R68W	<b>TVD Reference:</b>	WELL @ 5128.5ft (RKB - 22.5')
<b>Reference Site:</b>	Ivey Pad Sec.11-T1S-R68W	<b>MD Reference:</b>	WELL @ 5128.5ft (RKB - 22.5')
<b>Site Error:</b>	0.0ft	<b>North Reference:</b>	True
<b>Reference Well:</b>	Ivey P-11-2HN	<b>Survey Calculation Method:</b>	Minimum Curvature
<b>Well Error:</b>	0.0ft	<b>Output errors are at</b>	2.00 sigma
<b>Reference Wellbore</b>	Wellbore #1	<b>Database:</b>	landmark
<b>Reference Design:</b>	Plan #1 (9-4-14)	<b>Offset TVD Reference:</b>	Offset Datum

<b>Company:</b>	Bayswater Exploration & Production, LLC	<b>Local Co-ordinate Reference:</b>	Well Ivey P-11-2HN
<b>Project:</b>	SEC.11-T1S-R68W	<b>TVD Reference:</b>	WELL @ 5128.5ft (RKB - 22.5')
<b>Reference Site:</b>	Ivey Pad Sec.11-T1S-R68W	<b>MD Reference:</b>	WELL @ 5128.5ft (RKB - 22.5')
<b>Site Error:</b>	0.0ft	<b>North Reference:</b>	True
<b>Reference Well:</b>	Ivey P-11-2HN	<b>Survey Calculation Method:</b>	Minimum Curvature
<b>Well Error:</b>	0.0ft	<b>Output errors are at</b>	2.00 sigma
<b>Reference Wellbore</b>	Wellbore #1	<b>Database:</b>	landmark
<b>Reference Design:</b>	Plan #1 (9-4-14)	<b>Offset TVD Reference:</b>	Offset Datum

Offset Design Ivey Pad Sec.11-T1S-R68W - Ivey M-11-2HN - Wellbore #1 - Plan #1 (9-4-14)													Offset Site Error:	0.0 ft
Survey Program: 0-MWD													Offset Well Error:	0.0 ft
Reference	Offset	Semi Major Axis		Distance										Warning
Measured Depth (ft)	Vertical Depth (ft)	Measured Depth (ft)	Vertical Depth (ft)	Reference (ft)	Offset (ft)	Highside Toolface (°)	Offset Wellbore Centre +N/-S (ft)	+E/-W (ft)	Between Centres (ft)	Between Ellipses (ft)	Minimum Separation (ft)	Separation Factor		
0.0	0.0	1.0	1.0	0.0	0.0	-89.65	0.4	-60.0	60.0	60.0	0.00	N/A		
100.0	100.0	101.0	101.0	0.1	0.1	-89.65	0.4	-60.0	60.0	59.8	0.23	264.203		
200.0	200.0	201.0	201.0	0.3	0.3	-89.65	0.4	-60.0	60.0	59.3	0.68	88.653 CC, ES		
300.0	300.0	301.0	301.0	0.6	0.6	176.09	0.4	-60.0	61.7	60.6	1.12	55.046		
400.0	399.8	400.8	400.8	0.8	0.8	176.39	0.4	-60.0	66.9	65.4	1.57	42.679		
500.0	499.5	500.5	500.5	1.0	1.0	176.80	0.4	-60.0	75.6	73.6	2.02	37.403		
600.0	598.7	599.7	599.7	1.3	1.2	177.23	0.4	-60.0	87.8	85.3	2.48	35.412		
700.0	697.5	698.5	698.5	1.6	1.5	177.64	0.4	-60.0	103.4	100.5	2.94	35.187		
800.0	795.6	796.6	796.6	2.0	1.7	177.99	0.4	-60.0	122.5	119.1	3.40	36.009		
900.0	893.1	894.1	894.1	2.5	1.9	178.29	0.4	-60.0	144.8	140.9	3.87	37.454		
1,000.0	990.4	991.4	991.4	2.9	2.1	178.53	0.4	-60.0	167.9	163.5	4.33	38.733		
1,100.0	1,087.7	1,088.7	1,088.7	3.4	2.3	178.70	0.4	-60.0	191.0	186.2	4.81	39.723		
1,200.0	1,185.0	1,186.0	1,186.0	3.9	2.6	178.84	0.4	-60.0	214.0	208.8	5.28	40.510		
1,300.0	1,282.3	1,283.3	1,283.3	4.4	2.8	178.96	0.4	-60.0	237.1	231.4	5.76	41.147		
1,400.0	1,379.6	1,380.6	1,380.6	4.9	3.0	179.05	0.4	-60.0	260.2	254.0	6.24	41.674		
1,500.0	1,476.9	1,477.9	1,477.9	5.4	3.2	179.13	0.4	-60.0	283.3	276.6	6.73	42.115		
1,600.0	1,574.2	1,584.1	1,584.0	5.9	3.4	179.16	0.1	-58.8	305.3	298.1	7.21	42.329		
1,700.0	1,671.5	1,694.3	1,694.2	6.4	3.7	179.08	-1.0	-53.5	323.7	316.0	7.69	42.109		
1,800.0	1,768.8	1,806.0	1,805.4	6.9	3.9	178.90	-3.1	-44.0	338.3	330.1	8.17	41.399		
1,900.0	1,866.1	1,910.3	1,909.0	7.4	4.1	178.66	-5.7	-31.9	349.8	341.1	8.65	40.427		
2,000.0	1,963.4	2,009.7	2,007.6	7.9	4.4	178.44	-8.3	-20.2	361.1	351.9	9.13	39.527		
2,100.0	2,060.7	2,109.0	2,106.3	8.4	4.6	178.23	-10.8	-8.4	372.3	362.7	9.62	38.699		
2,200.0	2,158.0	2,208.4	2,204.9	8.9	4.9	178.03	-13.4	3.4	383.6	373.5	10.11	37.937		
2,300.0	2,255.3	2,307.8	2,303.5	9.4	5.1	177.85	-15.9	15.2	394.8	384.2	10.60	37.235		
2,400.0	2,352.6	2,407.1	2,402.1	9.9	5.4	177.67	-18.5	27.0	406.1	395.0	11.10	36.584		
2,500.0	2,449.9	2,506.5	2,500.7	10.4	5.7	177.51	-21.0	38.8	417.4	405.8	11.60	35.981		
2,600.0	2,547.2	2,605.8	2,599.4	10.9	6.0	177.35	-23.6	50.6	428.7	416.5	12.10	35.421		
2,700.0	2,644.5	2,705.2	2,698.0	11.4	6.2	177.20	-26.2	62.4	439.9	427.3	12.61	34.900		
2,800.0	2,741.8	2,804.5	2,796.6	11.9	6.5	177.06	-28.7	74.2	451.2	438.1	13.11	34.414		
2,900.0	2,839.1	2,903.9	2,895.2	12.4	6.8	176.93	-31.3	85.9	462.5	448.9	13.62	33.960		
3,000.0	2,936.4	3,003.2	2,993.8	12.9	7.1	176.80	-33.8	97.7	473.8	459.7	14.13	33.535		
3,100.0	3,033.7	3,102.6	3,092.5	13.4	7.4	176.68	-36.4	109.5	485.1	470.4	14.64	33.136		
3,200.0	3,131.0	3,202.0	3,191.1	13.9	7.7	176.56	-38.9	121.3	496.4	481.2	15.15	32.761		
3,300.0	3,228.3	3,301.3	3,289.7	14.4	8.0	176.45	-41.5	133.1	507.7	492.0	15.66	32.409		
3,400.0	3,325.6	3,400.7	3,388.3	14.9	8.3	176.34	-44.1	144.9	518.9	502.8	16.18	32.076		
3,500.0	3,422.9	3,500.0	3,486.9	15.4	8.6	176.24	-46.6	156.7	530.2	513.5	16.69	31.762		
3,600.0	3,520.2	3,599.4	3,585.6	15.9	8.9	176.14	-49.2	168.5	541.5	524.3	17.21	31.466		
3,700.0	3,617.5	3,698.7	3,684.2	16.4	9.2	176.05	-51.7	180.3	552.8	535.1	17.73	31.185		
3,800.0	3,714.8	3,798.1	3,782.8	16.9	9.5	175.96	-54.3	192.0	564.1	545.9	18.25	30.919		
3,900.0	3,812.1	3,897.4	3,881.4	17.4	9.8	175.87	-56.8	203.8	575.4	556.7	18.76	30.666		
4,000.0	3,909.4	3,996.8	3,980.1	17.9	10.1	175.79	-59.4	215.6	586.7	567.5	19.28	30.426		
4,100.0	4,006.7	4,096.2	4,078.7	18.4	10.4	175.71	-62.0	227.4	598.0	578.2	19.80	30.197 SF		

<b>Company:</b>	Bayswater Exploration & Production, LLC	<b>Local Co-ordinate Reference:</b>	Well Ivey P-11-2HN
<b>Project:</b>	SEC.11-T1S-R68W	<b>TVD Reference:</b>	WELL @ 5128.5ft (RKB - 22.5')
<b>Reference Site:</b>	Ivey Pad Sec.11-T1S-R68W	<b>MD Reference:</b>	WELL @ 5128.5ft (RKB - 22.5')
<b>Site Error:</b>	0.0ft	<b>North Reference:</b>	True
<b>Reference Well:</b>	Ivey P-11-2HN	<b>Survey Calculation Method:</b>	Minimum Curvature
<b>Well Error:</b>	0.0ft	<b>Output errors are at</b>	2.00 sigma
<b>Reference Wellbore</b>	Wellbore #1	<b>Database:</b>	landmark
<b>Reference Design:</b>	Plan #1 (9-4-14)	<b>Offset TVD Reference:</b>	Offset Datum

<b>Offset Design</b> Ivey Pad Sec.11-T1S-R68W - Ivey N-11-12HN - Wellbore #1 - Plan #1 (7-02-13)												<b>Offset Site Error:</b>	0.0 ft
Survey Program: 0-MWD												<b>Offset Well Error:</b>	0.0 ft
Reference		Offset		Semi Major Axis			Distance						
Measured Depth (ft)	Vertical Depth (ft)	Measured Depth (ft)	Vertical Depth (ft)	Reference (ft)	Offset (ft)	Highside Toolface (°)	Offset Wellbore Centre +N/-S (ft)	+E/-W (ft)	Between Centres (ft)	Between Ellipses (ft)	Minimum Separation (ft)	Separation Factor	Warning
0.0	0.0	1.0	1.0	0.0	0.0	-133.97	-112.2	-116.3	161.6				
100.0	100.0	101.0	101.0	0.1	0.1	-133.97	-112.2	-116.3	161.6	161.4	0.23	711.870	
200.0	200.0	201.0	201.0	0.3	0.3	-133.97	-112.2	-116.3	161.6	160.9	0.68	238.867	CC, ES
300.0	300.0	301.0	301.0	0.6	0.6	132.10	-112.2	-116.3	162.8	161.7	1.12	145.597	
400.0	399.8	400.8	400.8	0.8	0.8	133.39	-112.2	-116.3	166.3	164.8	1.57	106.235	
500.0	499.5	500.5	500.5	1.0	1.0	135.40	-112.2	-116.3	172.4	170.4	2.03	84.867	
600.0	598.7	599.7	599.7	1.3	1.2	137.98	-112.2	-116.3	181.3	178.8	2.52	72.074	
700.0	697.5	692.7	692.7	1.6	1.4	140.91	-112.5	-117.8	194.7	191.7	3.00	64.991	
800.0	795.6	783.8	783.7	2.0	1.6	144.16	-113.2	-122.1	214.4	211.0	3.49	61.437	
900.0	893.1	872.6	872.2	2.5	1.8	147.45	-114.5	-129.1	240.5	236.5	3.99	60.226	
1,000.0	990.4	959.4	958.4	2.9	2.0	150.47	-116.2	-138.5	270.8	266.3	4.48	60.391	
1,100.0	1,087.7	1,044.3	1,042.5	3.4	2.3	152.97	-118.3	-150.1	304.5	299.6	4.97	61.309	
1,200.0	1,185.0	1,127.2	1,124.2	3.9	2.5	155.05	-120.8	-163.9	341.5	336.0	5.44	62.731	
1,300.0	1,282.3	1,208.1	1,203.5	4.4	2.8	156.76	-123.7	-179.6	381.4	375.5	5.91	64.490	
1,400.0	1,379.6	1,286.9	1,280.3	4.9	3.1	158.18	-126.8	-196.9	424.1	417.7	6.38	66.467	
1,500.0	1,476.9	1,373.5	1,364.4	5.4	3.5	159.50	-130.6	-217.6	468.7	461.9	6.86	68.370	
1,600.0	1,574.2	1,462.5	1,450.7	5.9	3.9	160.62	-134.5	-238.8	513.6	506.2	7.33	70.081	
1,700.0	1,671.5	1,551.5	1,537.0	6.4	4.3	161.56	-138.3	-260.1	558.5	550.7	7.80	71.612	
7,400.0	7,236.1	10,284.9	7,747.2	31.8	70.0	179.73	-331.1	1,427.4	567.9	469.8	98.07	5.790	
7,500.0	7,330.0	10,284.6	7,747.2	31.8	70.0	179.81	-331.1	1,427.1	503.7	409.9	93.77	5.372	
7,600.0	7,418.2	10,284.3	7,747.2	31.9	70.0	179.86	-331.1	1,426.8	465.8	377.9	87.89	5.299	SF
7,662.6	7,469.8	10,284.1	7,747.2	32.0	70.0	179.88	-331.1	1,426.6	458.8	375.3	83.49	5.495	
7,700.0	7,499.0	10,284.0	7,747.2	32.0	70.0	179.89	-331.1	1,426.5	461.3	380.7	80.62	5.722	
7,800.0	7,570.9	10,283.8	7,747.2	32.1	70.0	179.92	-331.1	1,426.3	491.3	419.1	72.20	6.804	
7,900.0	7,632.3	10,283.5	7,747.2	32.2	70.0	179.94	-331.1	1,426.1	549.7	486.7	62.99	8.726	

<b>Company:</b>	Bayswater Exploration & Production, LLC	<b>Local Co-ordinate Reference:</b>	Well Ivey P-11-2HN
<b>Project:</b>	SEC.11-T1S-R68W	<b>TVD Reference:</b>	WELL @ 5128.5ft (RKB - 22.5')
<b>Reference Site:</b>	Ivey Pad Sec.11-T1S-R68W	<b>MD Reference:</b>	WELL @ 5128.5ft (RKB - 22.5')
<b>Site Error:</b>	0.0ft	<b>North Reference:</b>	True
<b>Reference Well:</b>	Ivey P-11-2HN	<b>Survey Calculation Method:</b>	Minimum Curvature
<b>Well Error:</b>	0.0ft	<b>Output errors are at</b>	2.00 sigma
<b>Reference Wellbore</b>	Wellbore #1	<b>Database:</b>	landmark
<b>Reference Design:</b>	Plan #1 (9-4-14)	<b>Offset TVD Reference:</b>	Offset Datum

Offset Design Ivey Pad Sec.11-T1S-R68W - Ivey N-11-2HN - Wellbore #1 - Plan #1 (9-4-14)													Offset Site Error:	0.0 ft
Survey Program: 0-MWD													Offset Well Error:	0.0 ft
Measured Depth (ft)	Vertical Depth (ft)	Measured Depth (ft)	Vertical Depth (ft)	Reference (ft)	Offset (ft)	Semi Major Axis Highside Toolface (°)	Offset Wellbore Centre +N/-S (ft)	+E/-W (ft)	Between Centres (ft)	Between Ellipses (ft)	Minimum Separation (ft)	Separation Factor	Warning	
0.0	0.0	0.0	0.0	0.0	0.0	-89.99	0.0	-30.0	30.0					
100.0	100.0	100.0	100.0	0.1	0.1	-89.99	0.0	-30.0	30.0	29.8	0.22	133.420		
200.0	200.0	200.0	200.0	0.3	0.3	-89.99	0.0	-30.0	30.0	29.3	0.67	44.473 CC, ES		
300.0	300.0	300.0	300.0	0.6	0.6	175.88	0.0	-30.0	31.7	30.6	1.12	28.354		
400.0	399.8	399.8	399.8	0.8	0.8	176.45	0.0	-30.0	37.0	35.4	1.57	23.591		
500.0	499.5	499.5	499.5	1.0	1.0	177.12	0.0	-30.0	45.7	43.6	2.02	22.599		
600.0	598.7	598.7	598.7	1.3	1.2	177.72	0.0	-30.0	57.8	55.3	2.48	23.342		
700.0	697.5	697.5	697.5	1.6	1.5	178.19	0.0	-30.0	73.5	70.5	2.94	25.010		
800.0	795.6	795.6	795.6	2.0	1.7	178.56	0.0	-30.0	92.5	89.1	3.40	27.220		
900.0	893.1	896.9	896.9	2.5	1.9	178.77	-0.2	-28.4	113.3	109.4	3.85	29.433		
1,000.0	990.4	999.7	999.5	2.9	2.1	178.81	-0.9	-23.1	131.3	127.0	4.29	30.609		
1,100.0	1,087.7	1,103.6	1,103.1	3.4	2.3	178.73	-2.1	-14.1	145.8	141.0	4.75	30.685		
1,200.0	1,185.0	1,208.6	1,207.2	3.9	2.6	178.54	-3.9	-1.2	156.7	151.4	5.23	29.956		
1,300.0	1,282.3	1,309.7	1,307.2	4.4	2.9	178.31	-5.9	13.9	164.9	159.2	5.72	28.848		
1,400.0	1,379.6	1,409.4	1,405.7	4.9	3.2	178.10	-7.9	28.8	173.1	166.8	6.21	27.859		
1,500.0	1,476.9	1,509.0	1,504.2	5.4	3.5	177.90	-10.0	43.8	181.2	174.5	6.71	26.994		
1,600.0	1,574.2	1,608.7	1,602.7	5.9	3.8	177.73	-12.0	58.7	189.3	182.1	7.22	26.229		
1,700.0	1,671.5	1,708.4	1,701.2	6.4	4.1	177.57	-14.0	73.7	197.5	189.8	7.73	25.562		
1,800.0	1,768.8	1,808.0	1,799.8	6.9	4.5	177.42	-16.0	88.6	205.6	197.4	8.24	24.961		
1,900.0	1,866.1	1,907.7	1,898.3	7.4	4.8	177.28	-18.1	103.6	213.8	205.0	8.75	24.425		
2,000.0	1,963.4	2,007.4	1,996.8	7.9	5.1	177.15	-20.1	118.5	221.9	212.7	9.27	23.942		
2,100.0	2,060.7	2,107.0	2,095.3	8.4	5.5	177.03	-22.1	133.5	230.1	220.3	9.79	23.507		
2,200.0	2,158.0	2,206.7	2,193.8	8.9	5.8	176.92	-24.1	148.4	238.2	227.9	10.31	23.111		
2,300.0	2,255.3	2,306.4	2,292.3	9.4	6.2	176.82	-26.1	163.4	246.4	235.6	10.83	22.751		
2,400.0	2,352.6	2,406.0	2,390.9	9.9	6.5	176.73	-28.2	178.3	254.6	243.2	11.35	22.421		
2,500.0	2,449.9	2,505.7	2,489.4	10.4	6.9	176.63	-30.2	193.3	262.7	250.8	11.88	22.119		
2,600.0	2,547.2	2,605.4	2,587.9	10.9	7.2	176.55	-32.2	208.2	270.9	258.5	12.40	21.840		
2,700.0	2,644.5	2,705.0	2,686.4	11.4	7.6	176.47	-34.2	223.2	279.0	266.1	12.93	21.583		
2,800.0	2,741.8	2,804.7	2,784.9	11.9	7.9	176.39	-36.2	238.1	287.2	273.7	13.45	21.345		
2,900.0	2,839.1	2,904.4	2,883.4	12.4	8.3	176.32	-38.3	253.1	295.3	281.3	13.98	21.123		
3,000.0	2,936.4	3,004.0	2,982.0	12.9	8.7	176.26	-40.3	268.0	303.5	289.0	14.51	20.917		
3,100.0	3,033.7	3,103.7	3,080.5	13.4	9.0	176.19	-42.3	283.0	311.6	296.6	15.04	20.725		
3,200.0	3,131.0	3,203.3	3,179.0	13.9	9.4	176.13	-44.3	297.9	319.8	304.2	15.57	20.545		
3,300.0	3,228.3	3,303.0	3,277.5	14.4	9.7	176.07	-46.4	312.9	328.0	311.9	16.10	20.376		
3,400.0	3,325.6	3,402.7	3,376.0	14.9	10.1	176.02	-48.4	327.8	336.1	319.5	16.63	20.217		
3,500.0	3,422.9	3,502.3	3,474.6	15.4	10.4	175.97	-50.4	342.8	344.3	327.1	17.16	20.068		
3,600.0	3,520.2	3,602.0	3,573.1	15.9	10.8	175.92	-52.4	357.7	352.4	334.7	17.69	19.928		
3,700.0	3,617.5	3,701.7	3,671.6	16.4	11.2	175.87	-54.4	372.7	360.6	342.4	18.22	19.795		
3,800.0	3,714.8	3,801.3	3,770.1	16.9	11.5	175.82	-56.5	387.6	368.8	350.0	18.75	19.669		
3,900.0	3,812.1	3,901.0	3,868.6	17.4	11.9	175.78	-58.5	402.6	376.9	357.6	19.28	19.550		
4,000.0	3,909.4	4,000.7	3,967.1	17.9	12.2	175.74	-60.5	417.5	385.1	365.3	19.81	19.438		
4,100.0	4,006.7	4,100.3	4,065.7	18.4	12.6	175.70	-62.5	432.5	393.2	372.9	20.34	19.331		
4,200.0	4,104.0	4,200.0	4,164.2	18.9	13.0	175.66	-64.5	447.4	401.4	380.5	20.87	19.229		
4,300.0	4,201.3	4,299.7	4,262.7	19.4	13.3	175.62	-66.6	462.3	409.6	388.1	21.41	19.132		
4,400.0	4,298.6	4,399.3	4,361.2	19.9	13.7	175.59	-68.6	477.3	417.7	395.8	21.94	19.039		
4,500.0	4,395.9	4,499.0	4,459.7	20.4	14.1	175.55	-70.6	492.2	425.9	403.4	22.47	18.951		
4,600.0	4,493.2	4,598.7	4,558.3	20.9	14.4	175.52	-72.6	507.2	434.0	411.0	23.01	18.867		
4,700.0	4,590.5	4,698.3	4,656.8	21.4	14.8	175.49	-74.7	522.1	442.2	418.7	23.54	18.786		
4,800.0	4,687.8	4,798.0	4,755.3	21.9	15.1	175.46	-76.7	537.1	450.4	426.3	24.07	18.709		
4,900.0	4,785.1	4,897.7	4,853.8	22.4	15.5	175.43	-78.7	552.0	458.5	433.9	24.60	18.635		
5,000.0	4,882.4	4,997.3	4,952.3	22.9	15.9	175.40	-80.7	567.0	466.7	441.5	25.14	18.565		
5,100.0	4,979.7	5,097.0	5,050.8	23.4	16.2	175.38	-82.7	581.9	474.8	449.2	25.67	18.497		

CC - Min centre to center distance or convergent point, SF - min separation factor, ES - min ellipse separation

<b>Company:</b>	Bayswater Exploration & Production, LLC	<b>Local Co-ordinate Reference:</b>	Well Ivey P-11-2HN
<b>Project:</b>	SEC.11-T1S-R68W	<b>TVD Reference:</b>	WELL @ 5128.5ft (RKB - 22.5')
<b>Reference Site:</b>	Ivey Pad Sec.11-T1S-R68W	<b>MD Reference:</b>	WELL @ 5128.5ft (RKB - 22.5')
<b>Site Error:</b>	0.0ft	<b>North Reference:</b>	True
<b>Reference Well:</b>	Ivey P-11-2HN	<b>Survey Calculation Method:</b>	Minimum Curvature
<b>Well Error:</b>	0.0ft	<b>Output errors are at</b>	2.00 sigma
<b>Reference Wellbore</b>	Wellbore #1	<b>Database:</b>	landmark
<b>Reference Design:</b>	Plan #1 (9-4-14)	<b>Offset TVD Reference:</b>	Offset Datum

<b>Offset Design</b> Ivey Pad Sec.11-T1S-R68W - Ivey N-11-2HN - Wellbore #1 - Plan #1 (9-4-14)												<b>Offset Site Error:</b>	0.0 ft
Survey Program: 0-MWD												<b>Offset Well Error:</b>	0.0 ft
Reference		Offset		Semi Major Axis			Distance						
Measured Depth (ft)	Vertical Depth (ft)	Measured Depth (ft)	Vertical Depth (ft)	Reference (ft)	Offset (ft)	Highside Toolface (°)	Offset Wellbore Centre +N/-S (ft)	+E/-W (ft)	Between Centres (ft)	Between Ellipses (ft)	Minimum Separation (ft)	Separation Factor	Warning
5,200.0	5,077.0	5,196.7	5,149.4	23.9	16.6	175.35	-84.8	596.9	483.0	456.8	26.21	18.431	
5,300.0	5,174.3	5,296.3	5,247.9	24.4	17.0	175.32	-86.8	611.8	491.2	464.4	26.74	18.369	
5,400.0	5,271.6	5,396.0	5,346.4	24.9	17.3	175.30	-88.8	626.8	499.3	472.1	27.27	18.308	
5,500.0	5,368.9	5,495.7	5,444.9	25.4	17.7	175.28	-90.8	641.7	507.5	479.7	27.81	18.250	
5,600.0	5,466.2	5,595.3	5,543.4	25.9	18.0	175.25	-92.8	656.7	515.6	487.3	28.34	18.194	
5,700.0	5,563.5	5,695.0	5,642.0	26.4	18.4	175.23	-94.9	671.6	523.8	494.9	28.88	18.140	
5,800.0	5,660.8	5,794.7	5,740.5	26.9	18.8	175.21	-96.9	686.6	532.0	502.6	29.41	18.088	
5,900.0	5,758.0	5,894.3	5,839.0	27.4	19.1	175.19	-98.9	701.5	540.1	510.2	29.94	18.038	
6,000.0	5,855.3	5,994.0	5,937.5	27.9	19.5	175.17	-100.9	716.5	548.3	517.8	30.48	17.989	
6,100.0	5,952.6	6,093.7	6,036.0	28.4	19.9	175.15	-103.0	731.4	556.5	525.4	31.01	17.942 SF	
6,200.0	6,049.9	6,182.1	6,123.5	28.9	20.1	175.14	-104.7	744.1	565.3	533.8	31.50	17.945	
6,300.0	6,147.2	6,265.0	6,205.9	29.4	20.4	175.16	-106.0	753.7	576.9	544.9	31.94	18.059	
6,400.0	6,244.5	6,347.4	6,287.9	29.9	20.5	175.22	-106.9	761.0	591.3	558.9	32.37	18.264	

<b>Company:</b>	Bayswater Exploration & Production, LLC	<b>Local Co-ordinate Reference:</b>	Well Ivey P-11-2HN
<b>Project:</b>	SEC.11-T1S-R68W	<b>TVD Reference:</b>	WELL @ 5128.5ft (RKB - 22.5')
<b>Reference Site:</b>	Ivey Pad Sec.11-T1S-R68W	<b>MD Reference:</b>	WELL @ 5128.5ft (RKB - 22.5')
<b>Site Error:</b>	0.0ft	<b>North Reference:</b>	True
<b>Reference Well:</b>	Ivey P-11-2HN	<b>Survey Calculation Method:</b>	Minimum Curvature
<b>Well Error:</b>	0.0ft	<b>Output errors are at</b>	2.00 sigma
<b>Reference Wellbore</b>	Wellbore #1	<b>Database:</b>	landmark
<b>Reference Design:</b>	Plan #1 (9-4-14)	<b>Offset TVD Reference:</b>	Offset Datum

<b>Offset Design</b> Ivey Pad Sec.11-T1S-R68W - Ivey O-11-12HN - Wellbore #1 - Plan #1 (8-21-14)												<b>Offset Site Error:</b>	0.0 ft
Survey Program: 0-MWD												<b>Offset Well Error:</b>	0.0 ft
Reference	Offset	Semi Major Axis		Distance									
Measured Depth (ft)	Vertical Depth (ft)	Measured Depth (ft)	Vertical Depth (ft)	Reference (ft)	Offset (ft)	Highside Toolface (°)	Offset Wellbore Centre +N/-S (ft)	+E/-W (ft)	Between Centres (ft)	Between Ellipses (ft)	Minimum Separation (ft)	Separation Factor	Warning
0.0	0.0	1.0	1.0	0.0	0.0	-136.17	-126.4	-121.4	175.2				
100.0	100.0	101.0	101.0	0.1	0.1	-136.17	-126.4	-121.4	175.2	175.0	0.23	771.881	
200.0	200.0	201.0	201.0	0.3	0.3	-136.17	-126.4	-121.4	175.2	174.6	0.68	259.003 CC, ES	
300.0	300.0	301.0	301.0	0.6	0.6	129.88	-126.4	-121.4	176.3	175.2	1.12	157.771	
400.0	399.8	400.0	400.0	0.8	0.8	131.10	-126.4	-121.4	179.7	178.2	1.56	114.966	
500.0	499.5	494.6	494.6	1.0	1.0	133.06	-127.1	-122.8	187.2	185.2	2.01	93.174	
600.0	598.7	587.2	587.0	1.3	1.2	135.65	-128.9	-126.9	200.4	198.0	2.48	80.937	
700.0	697.5	678.0	677.6	1.6	1.4	138.54	-132.0	-133.6	219.8	216.9	2.97	73.953	
800.0	795.6	766.6	765.6	2.0	1.6	141.42	-136.1	-142.7	245.5	242.0	3.49	70.404	
900.0	893.1	852.5	850.6	2.5	1.9	144.18	-141.2	-153.8	277.3	273.3	4.01	69.162 SF	
1,000.0	990.4	936.3	933.2	2.9	2.1	146.68	-147.2	-166.9	313.2	308.7	4.52	69.280	
1,100.0	1,087.7	1,020.9	1,016.1	3.4	2.5	148.74	-154.2	-182.2	352.1	347.1	5.04	69.890	
1,200.0	1,185.0	1,112.0	1,105.2	3.9	2.8	150.52	-162.0	-199.3	392.1	386.5	5.53	70.843	
1,300.0	1,282.3	1,203.0	1,194.3	4.4	3.2	151.98	-169.8	-216.4	432.3	426.3	6.03	71.642	
1,400.0	1,379.6	1,294.1	1,283.4	4.9	3.6	153.20	-177.6	-233.4	472.7	466.2	6.54	72.308	
1,500.0	1,476.9	1,385.1	1,372.4	5.4	4.0	154.22	-185.4	-250.5	513.3	506.3	7.04	72.877	
1,600.0	1,574.2	1,476.1	1,461.5	5.9	4.4	155.09	-193.2	-267.6	554.0	546.4	7.56	73.319	
1,700.0	1,671.5	1,567.2	1,550.6	6.4	4.8	155.85	-201.0	-284.6	594.8	586.7	8.07	73.725	



<b>Company:</b>	Bayswater Exploration & Production, LLC	<b>Local Co-ordinate Reference:</b>	Well Ivey P-11-2HN
<b>Project:</b>	SEC.11-T1S-R68W	<b>TVD Reference:</b>	WELL @ 5128.5ft (RKB - 22.5')
<b>Reference Site:</b>	Ivey Pad Sec.11-T1S-R68W	<b>MD Reference:</b>	WELL @ 5128.5ft (RKB - 22.5')
<b>Site Error:</b>	0.0ft	<b>North Reference:</b>	True
<b>Reference Well:</b>	Ivey P-11-2HN	<b>Survey Calculation Method:</b>	Minimum Curvature
<b>Well Error:</b>	0.0ft	<b>Output errors are at</b>	2.00 sigma
<b>Reference Wellbore</b>	Wellbore #1	<b>Database:</b>	landmark
<b>Reference Design:</b>	Plan #1 (9-4-14)	<b>Offset TVD Reference:</b>	Offset Datum

Offset Design Ivey Pad Sec.11-T1S-R68W - Ivey O-11-2HN - Wellbore #1 - Plan #1 (9-4-14)												Offset Site Error:	0.0 ft
Survey Program: 0-MWD												Offset Well Error:	0.0 ft
Reference		Offset		Semi Major Axis			Distance						Warning
Measured Depth (ft)	Vertical Depth (ft)	Measured Depth (ft)	Vertical Depth (ft)	Reference (ft)	Offset (ft)	Highside Toolface (°)	Offset Wellbore Centre +N/-S (ft)	+E/-W (ft)	Between Centres (ft)	Between Ellipses (ft)	Minimum Separation (ft)	Separation Factor	
0.0	0.0	0.0	0.0	0.0	0.0	-89.98	0.0	-15.1	15.1	15.1	0.00	N/A	
100.0	100.0	100.0	100.0	0.1	0.1	-89.98	0.0	-15.1	15.1	14.9	0.22	67.334	
200.0	200.0	200.0	200.0	0.3	0.3	-89.98	0.0	-15.1	15.1	14.5	0.67	22.445 CC, ES	
300.0	300.0	300.0	300.0	0.6	0.6	176.09	0.0	-15.1	16.9	15.8	1.12	15.080	
400.0	399.8	399.8	399.8	0.8	0.8	177.01	0.0	-15.1	22.1	20.5	1.57	14.109	
500.0	499.5	500.5	500.5	1.0	1.0	177.66	-0.2	-13.4	29.1	27.1	2.00	14.528	
600.0	598.7	601.4	601.2	1.3	1.2	177.93	-0.7	-8.1	36.0	33.6	2.43	14.826	
700.0	697.5	702.5	702.0	1.6	1.5	178.02	-1.5	0.8	42.9	40.0	2.87	14.947	
800.0	795.6	803.9	802.6	2.0	1.7	177.99	-2.8	13.2	49.8	46.5	3.33	14.957	
900.0	893.1	905.6	903.0	2.5	2.0	177.89	-4.3	29.2	56.4	52.6	3.80	14.831	
1,000.0	990.4	1,005.8	1,001.5	2.9	2.4	177.72	-6.1	47.1	61.6	57.3	4.30	14.314	
1,100.0	1,087.7	1,105.6	1,099.7	3.4	2.8	177.57	-7.8	65.1	66.7	61.9	4.81	13.866	
1,200.0	1,185.0	1,205.5	1,198.0	3.9	3.2	177.44	-9.6	83.1	71.8	66.5	5.33	13.487	
1,300.0	1,282.3	1,305.4	1,296.2	4.4	3.5	177.33	-11.3	101.1	77.0	71.1	5.85	13.163	
1,400.0	1,379.6	1,405.3	1,394.4	4.9	3.9	177.24	-13.1	119.0	82.1	75.7	6.37	12.889	
1,500.0	1,476.9	1,505.1	1,492.6	5.4	4.3	177.15	-14.8	137.0	87.2	80.3	6.90	12.649	
1,600.0	1,574.2	1,605.0	1,590.8	5.9	4.7	177.08	-16.6	155.0	92.4	84.9	7.43	12.439	
1,700.0	1,671.5	1,704.9	1,689.1	6.4	5.1	177.01	-18.3	172.9	97.5	89.5	7.96	12.254	
1,800.0	1,768.8	1,804.7	1,787.3	6.9	5.5	176.95	-20.1	190.9	102.6	94.1	8.49	12.091	
1,900.0	1,866.1	1,904.6	1,885.5	7.4	5.9	176.89	-21.8	208.9	107.8	98.7	9.02	11.945	
2,000.0	1,963.4	2,004.5	1,983.7	7.9	6.3	176.84	-23.6	226.9	112.9	103.3	9.55	11.814	
2,100.0	2,060.7	2,104.3	2,082.0	8.4	6.8	176.80	-25.3	244.8	118.0	107.9	10.09	11.696	
2,200.0	2,158.0	2,204.2	2,180.2	8.9	7.2	176.75	-27.1	262.8	123.1	112.5	10.63	11.590	
2,300.0	2,255.3	2,304.1	2,278.4	9.4	7.6	176.72	-28.8	280.8	128.3	117.1	11.16	11.492	
2,400.0	2,352.6	2,403.9	2,376.6	9.9	8.0	176.68	-30.6	298.7	133.4	121.7	11.70	11.404	
2,500.0	2,449.9	2,503.8	2,474.9	10.4	8.4	176.65	-32.3	316.7	138.5	126.3	12.24	11.322	
2,600.0	2,547.2	2,603.7	2,573.1	10.9	8.8	176.62	-34.1	334.7	143.7	130.9	12.77	11.247	
2,700.0	2,644.5	2,703.5	2,671.3	11.4	9.2	176.59	-35.8	352.7	148.8	135.5	13.31	11.178	
2,800.0	2,741.8	2,803.4	2,769.5	11.9	9.6	176.56	-37.6	370.6	153.9	140.1	13.85	11.114	
2,900.0	2,839.1	2,903.3	2,867.7	12.4	10.0	176.54	-39.3	388.6	159.0	144.7	14.39	11.054	
3,000.0	2,936.4	3,003.1	2,966.0	12.9	10.4	176.51	-41.1	406.6	164.2	149.3	14.93	10.999	
3,100.0	3,033.7	3,103.0	3,064.2	13.4	10.8	176.49	-42.8	424.5	169.3	153.8	15.47	10.947	
3,200.0	3,131.0	3,202.9	3,162.4	13.9	11.3	176.47	-44.6	442.5	174.4	158.4	16.01	10.899	
3,300.0	3,228.3	3,302.7	3,260.6	14.4	11.7	176.45	-46.3	460.5	179.6	163.0	16.54	10.853	
3,400.0	3,325.6	3,402.6	3,358.9	14.9	12.1	176.43	-48.1	478.4	184.7	167.6	17.08	10.811	
3,500.0	3,422.9	3,502.5	3,457.1	15.4	12.5	176.42	-49.8	496.4	189.8	172.2	17.62	10.771	
3,600.0	3,520.2	3,602.4	3,555.3	15.9	12.9	176.40	-51.6	514.4	195.0	176.8	18.16	10.733	
3,700.0	3,617.5	3,702.2	3,653.5	16.4	13.3	176.38	-53.3	532.4	200.1	181.4	18.70	10.697	
3,800.0	3,714.8	3,802.1	3,751.7	16.9	13.7	176.37	-55.1	550.3	205.2	186.0	19.24	10.663	
3,900.0	3,812.1	3,902.0	3,850.0	17.4	14.1	176.36	-56.8	568.3	210.3	190.6	19.79	10.632	
4,000.0	3,909.4	4,001.8	3,948.2	17.9	14.5	176.34	-58.6	586.3	215.5	195.2	20.33	10.601	
4,100.0	4,006.7	4,101.7	4,046.4	18.4	15.0	176.33	-60.3	604.2	220.6	199.7	20.87	10.572	
4,200.0	4,104.0	4,201.6	4,144.6	18.9	15.4	176.32	-62.1	622.2	225.7	204.3	21.41	10.545	
4,300.0	4,201.3	4,301.4	4,242.9	19.4	15.8	176.31	-63.8	640.2	230.9	208.9	21.95	10.519	
4,400.0	4,298.6	4,401.3	4,341.1	19.9	16.2	176.29	-65.6	658.2	236.0	213.5	22.49	10.494	
4,500.0	4,395.9	4,501.2	4,439.3	20.4	16.6	176.28	-67.3	676.1	241.1	218.1	23.03	10.470	
4,600.0	4,493.2	4,601.0	4,537.5	20.9	17.0	176.27	-69.1	694.1	246.3	222.7	23.57	10.448	
4,700.0	4,590.5	4,700.9	4,635.7	21.4	17.4	176.26	-70.8	712.1	251.4	227.3	24.11	10.426	
4,800.0	4,687.8	4,800.8	4,734.0	21.9	17.8	176.25	-72.6	730.0	256.5	231.9	24.65	10.405	
4,900.0	4,785.1	4,900.6	4,832.2	22.4	18.3	176.25	-74.3	748.0	261.7	236.5	25.19	10.385	
5,000.0	4,882.4	5,000.5	4,930.4	22.9	18.7	176.24	-76.1	766.0	266.8	241.0	25.74	10.366	
5,100.0	4,979.7	5,100.4	5,028.6	23.4	19.1	176.23	-77.8	784.0	271.9	245.6	26.28	10.348	

CC - Min centre to center distance or convergent point, SF - min separation factor, ES - min ellipse separation

<b>Company:</b>	Bayswater Exploration & Production, LLC	<b>Local Co-ordinate Reference:</b>	Well Ivey P-11-2HN
<b>Project:</b>	SEC.11-T1S-R68W	<b>TVD Reference:</b>	WELL @ 5128.5ft (RKB - 22.5')
<b>Reference Site:</b>	Ivey Pad Sec.11-T1S-R68W	<b>MD Reference:</b>	WELL @ 5128.5ft (RKB - 22.5')
<b>Site Error:</b>	0.0ft	<b>North Reference:</b>	True
<b>Reference Well:</b>	Ivey P-11-2HN	<b>Survey Calculation Method:</b>	Minimum Curvature
<b>Well Error:</b>	0.0ft	<b>Output errors are at</b>	2.00 sigma
<b>Reference Wellbore</b>	Wellbore #1	<b>Database:</b>	landmark
<b>Reference Design:</b>	Plan #1 (9-4-14)	<b>Offset TVD Reference:</b>	Offset Datum

<b>Offset Design</b> Ivey Pad Sec.11-T1S-R68W - Ivey O-11-2HN - Wellbore #1 - Plan #1 (9-4-14)												<b>Offset Site Error:</b>	0.0 ft
Survey Program: 0-MWDD												<b>Offset Well Error:</b>	0.0 ft
Reference		Offset		Semi Major Axis			Distance						
Measured Depth (ft)	Vertical Depth (ft)	Measured Depth (ft)	Vertical Depth (ft)	Reference (ft)	Offset (ft)	Highside Toolface (°)	Offset Wellbore Centre +N/-S (ft)	+E/-W (ft)	Between Centres (ft)	Between Ellipses (ft)	Minimum Separation (ft)	Separation Factor	Warning
5,200.0	5,077.0	5,200.2	5,126.9	23.9	19.5	176.22	-79.6	801.9	277.0	250.2	26.82	10.331	
5,300.0	5,174.3	5,300.1	5,225.1	24.4	19.9	176.21	-81.3	819.9	282.2	254.8	27.36	10.314	
5,400.0	5,271.6	5,400.0	5,323.3	24.9	20.3	176.21	-83.1	837.9	287.3	259.4	27.90	10.297	
5,500.0	5,368.9	5,499.9	5,421.5	25.4	20.7	176.20	-84.8	855.8	292.4	264.0	28.44	10.282	
5,600.0	5,466.2	5,599.7	5,519.7	25.9	21.1	176.19	-86.6	873.8	297.6	268.6	28.98	10.267	
5,700.0	5,563.5	5,699.6	5,618.0	26.4	21.6	176.18	-88.3	891.8	302.7	273.2	29.52	10.252	
5,800.0	5,660.8	5,799.5	5,716.2	26.9	22.0	176.18	-90.1	909.8	307.8	277.8	30.07	10.238	
5,900.0	5,758.0	5,899.3	5,814.4	27.4	22.4	176.17	-91.8	927.7	313.0	282.3	30.61	10.225	
6,000.0	5,855.3	5,999.2	5,912.6	27.9	22.8	176.17	-93.6	945.7	318.1	286.9	31.15	10.211	
6,100.0	5,952.6	6,099.1	6,010.9	28.4	23.2	176.16	-95.3	963.7	323.2	291.5	31.69	10.199	
6,200.0	6,049.9	6,198.9	6,109.1	28.9	23.6	176.15	-97.1	981.6	328.3	296.1	32.23	10.187	
6,300.0	6,147.2	6,298.8	6,207.3	29.4	24.0	176.15	-98.8	999.6	333.5	300.7	32.77	10.175	
6,400.0	6,244.5	6,398.7	6,305.5	29.9	24.4	176.14	-100.6	1,017.6	338.6	305.3	33.32	10.163	
6,500.0	6,342.3	6,498.6	6,403.8	30.3	24.9	176.12	-102.3	1,035.6	341.8	308.0	33.82	10.105	
6,600.0	6,440.7	6,596.4	6,500.0	30.6	25.2	176.06	-104.0	1,053.1	341.5	307.3	34.28	9.964	
6,700.0	6,539.6	6,685.8	6,588.3	30.9	25.5	175.99	-105.4	1,067.3	339.9	305.3	34.61	9.821	
6,800.0	6,639.1	6,775.3	6,677.0	31.1	25.7	175.92	-106.5	1,078.7	338.0	303.1	34.89	9.686	
6,900.0	6,738.8	6,864.8	6,766.1	31.3	25.9	175.86	-107.4	1,087.3	335.6	300.5	35.11	9.559	
7,000.0	6,838.7	6,954.3	6,855.4	31.4	26.1	175.81	-107.9	1,093.2	332.9	297.7	35.28	9.438	
7,100.0	6,938.7	7,044.0	6,945.0	31.5	26.2	-89.87	-108.2	1,096.3	330.1	294.6	35.50	9.299	
7,186.2	7,024.9	7,123.8	7,024.9	31.6	26.3	-89.88	-108.3	1,096.9	329.5	293.8	35.78	9.211	
7,200.0	7,038.7	7,137.6	7,038.7	31.6	26.3	-89.88	-108.3	1,096.9	329.5	293.7	35.82	9.199	
7,218.0	7,056.7	7,155.7	7,056.7	31.6	26.3	-90.11	-108.3	1,096.9	329.5	293.7	35.86	9.188	
7,300.0	7,138.4	7,237.4	7,138.4	31.7	26.4	-91.24	-108.3	1,096.9	329.6	293.3	36.27	9.087	
7,400.0	7,236.1	7,338.5	7,239.1	31.8	26.5	-93.43	-100.0	1,096.9	330.1	293.2	36.89	8.948	
7,500.0	7,330.0	7,441.4	7,339.4	31.8	26.6	-95.55	-77.1	1,096.9	331.1	293.7	37.48	8.836	
7,600.0	7,418.2	7,546.3	7,437.1	31.9	26.7	-97.57	-39.2	1,097.0	332.5	294.6	37.96	8.759	
7,700.0	7,499.0	7,653.1	7,529.7	32.0	26.8	-99.44	13.7	1,097.2	334.2	295.9	38.36	8.712	
7,800.0	7,570.9	7,761.7	7,614.9	32.1	26.9	-101.12	81.0	1,097.3	336.1	297.3	38.75	8.672	
7,900.0	7,632.3	7,822.1	7,689.9	32.2	27.1	-102.56	161.7	1,097.5	337.9	298.7	39.24	8.610	
8,000.0	7,682.2	7,883.9	7,752.3	32.4	27.2	-103.73	254.4	1,097.7	339.6	299.6	40.03	8.484	
8,100.0	7,719.4	8,097.0	7,800.0	32.6	27.5	-104.61	356.8	1,098.0	341.0	299.7	41.26	8.264	
8,200.0	7,743.4	8,210.9	7,831.1	32.9	27.9	-105.17	466.3	1,098.3	342.0	298.9	43.06	7.942	
8,300.0	7,753.6	8,325.4	7,844.5	33.2	28.5	-105.40	579.8	1,098.5	342.4	297.0	45.42	7.539	
8,400.0	7,753.9	8,429.2	7,844.8	33.7	29.1	-105.41	683.7	1,098.9	342.5	294.9	47.54	7.204	
8,500.0	7,753.7	8,529.2	7,844.7	34.3	29.9	-105.41	783.7	1,099.2	342.5	292.7	49.80	6.877	
8,600.0	7,753.5	8,629.2	7,844.5	35.0	30.8	-105.40	883.7	1,099.5	342.4	290.2	52.22	6.557	
8,700.0	7,753.3	8,729.2	7,844.3	35.8	31.8	-105.40	983.7	1,099.9	342.4	287.6	54.79	6.250	
8,800.0	7,753.1	8,829.2	7,844.1	36.7	32.9	-105.40	1,083.7	1,100.2	342.4	284.9	57.49	5.957	
8,900.0	7,752.9	8,929.2	7,843.9	37.7	34.1	-105.40	1,183.7	1,100.6	342.4	282.1	60.29	5.680	
9,000.0	7,752.7	9,029.2	7,843.7	38.8	35.4	-105.40	1,283.7	1,100.9	342.4	279.2	63.19	5.419	
9,100.0	7,752.6	9,129.2	7,843.5	39.9	36.7	-105.39	1,383.7	1,101.2	342.4	276.3	66.16	5.175	
9,200.0	7,752.4	9,229.2	7,843.3	41.2	38.1	-105.39	1,483.7	1,101.6	342.4	273.2	69.21	4.947	
9,300.0	7,752.2	9,329.2	7,843.1	42.4	39.5	-105.39	1,583.7	1,101.9	342.4	270.1	72.32	4.734	
9,400.0	7,752.0	9,429.2	7,842.9	43.8	41.0	-105.39	1,683.7	1,102.3	342.4	266.9	75.49	4.536	
9,500.0	7,751.8	9,529.2	7,842.7	45.2	42.5	-105.39	1,783.7	1,102.6	342.4	263.7	78.70	4.351	
9,600.0	7,751.6	9,629.2	7,842.5	46.6	44.1	-105.39	1,883.7	1,102.9	342.4	260.4	81.96	4.178	
9,700.0	7,751.4	9,729.2	7,842.3	48.1	45.7	-105.38	1,983.7	1,103.3	342.4	257.1	85.25	4.016	
9,800.0	7,751.3	9,829.2	7,842.1	49.6	47.3	-105.38	2,083.7	1,103.6	342.4	253.8	88.58	3.865	
9,900.0	7,751.1	9,929.2	7,841.9	51.1	48.9	-105.38	2,183.7	1,104.0	342.4	250.5	91.93	3.724	
10,000.0	7,750.9	10,029.2	7,841.7	52.7	50.6	-105.38	2,283.7	1,104.3	342.4	247.1	95.31	3.592	
10,100.0	7,750.7	10,129.2	7,841.5	54.3	52.2	-105.38	2,383.7	1,104.6	342.4	243.7	98.72	3.468	

CC - Min centre to center distance or convergent point, SF - min separation factor, ES - min ellipse separation

<b>Company:</b>	Bayswater Exploration & Production, LLC	<b>Local Co-ordinate Reference:</b>	Well Ivey P-11-2HN
<b>Project:</b>	SEC.11-T1S-R68W	<b>TVD Reference:</b>	WELL @ 5128.5ft (RKB - 22.5')
<b>Reference Site:</b>	Ivey Pad Sec.11-T1S-R68W	<b>MD Reference:</b>	WELL @ 5128.5ft (RKB - 22.5')
<b>Site Error:</b>	0.0ft	<b>North Reference:</b>	True
<b>Reference Well:</b>	Ivey P-11-2HN	<b>Survey Calculation Method:</b>	Minimum Curvature
<b>Well Error:</b>	0.0ft	<b>Output errors are at</b>	2.00 sigma
<b>Reference Wellbore</b>	Wellbore #1	<b>Database:</b>	landmark
<b>Reference Design:</b>	Plan #1 (9-4-14)	<b>Offset TVD Reference:</b>	Offset Datum

Offset Design Ivey Pad Sec.11-T1S-R68W - Ivey O-11-2HN - Wellbore #1 - Plan #1 (9-4-14)												Offset Site Error:	0.0ft
Survey Program: 0-MWDD												Offset Well Error:	0.0ft
Reference		Offset		Semi Major Axis			Distance						
Measured Depth (ft)	Vertical Depth (ft)	Measured Depth (ft)	Vertical Depth (ft)	Reference (ft)	Offset (ft)	Highside Toolface (°)	Offset Wellbore Centre +N/-S (ft)	+E/-W (ft)	Between Centres (ft)	Between Ellipses (ft)	Minimum Separation (ft)	Separation Factor	Warning
10,200.0	7,750.5	10,229.2	7,841.3	55.9	53.9	-105.37	2,483.7	1,105.0	342.4	240.2	102.15	3.352	
10,300.0	7,750.3	10,329.2	7,841.1	57.5	55.6	-105.37	2,583.7	1,105.3	342.4	236.8	105.59	3.242	
10,400.0	7,750.1	10,429.2	7,840.9	59.1	57.3	-105.37	2,683.7	1,105.7	342.4	233.3	109.06	3.139	
10,500.0	7,750.0	10,529.2	7,840.7	60.8	59.1	-105.37	2,783.7	1,106.0	342.4	229.8	112.54	3.042	
10,600.0	7,749.8	10,629.2	7,840.5	62.5	60.8	-105.37	2,883.7	1,106.3	342.4	226.3	116.03	2.951	
10,700.0	7,749.6	10,729.2	7,840.3	64.2	62.6	-105.36	2,983.7	1,106.7	342.4	222.8	119.54	2.864	
10,800.0	7,749.4	10,829.2	7,840.1	65.9	64.3	-105.36	3,083.7	1,107.0	342.3	219.3	123.06	2.782	
10,900.0	7,749.2	10,929.2	7,839.9	67.6	66.1	-105.36	3,183.7	1,107.4	342.3	215.8	126.59	2.704	
11,000.0	7,749.0	11,029.2	7,839.7	69.4	67.9	-105.36	3,283.7	1,107.7	342.3	212.2	130.13	2.631	
11,100.0	7,748.8	11,129.2	7,839.5	71.1	69.7	-105.36	3,383.7	1,108.0	342.3	208.7	133.68	2.561	
11,200.0	7,748.7	11,229.2	7,839.3	72.8	71.4	-105.35	3,483.7	1,108.4	342.3	205.1	137.24	2.494	
11,300.0	7,748.5	11,329.2	7,839.1	74.6	73.2	-105.35	3,583.7	1,108.7	342.3	201.5	140.81	2.431	
11,400.0	7,748.3	11,429.2	7,838.9	76.4	75.0	-105.35	3,683.7	1,109.1	342.3	197.9	144.38	2.371	
11,500.0	7,748.1	11,529.2	7,838.7	78.1	76.8	-105.35	3,783.7	1,109.4	342.3	194.4	147.96	2.314	
11,600.0	7,747.9	11,629.2	7,838.5	79.9	78.7	-105.35	3,883.7	1,109.7	342.3	190.8	151.55	2.259	
11,700.0	7,747.7	11,729.2	7,838.3	81.7	80.5	-105.34	3,983.7	1,110.1	342.3	187.2	155.14	2.206	
11,800.0	7,747.5	11,829.2	7,838.1	83.5	82.3	-105.34	4,083.7	1,110.4	342.3	183.6	158.74	2.156	
11,900.0	7,747.3	11,929.2	7,837.9	85.3	84.1	-105.34	4,183.7	1,110.7	342.3	180.0	162.35	2.108	
12,000.0	7,747.2	12,029.2	7,837.7	87.1	86.0	-105.34	4,283.7	1,111.1	342.3	176.3	165.95	2.063	
12,100.0	7,747.0	12,129.2	7,837.5	88.9	87.8	-105.34	4,383.7	1,111.4	342.3	172.7	169.57	2.019	
12,200.0	7,746.8	12,229.2	7,837.3	90.7	89.6	-105.33	4,483.7	1,111.8	342.3	169.1	173.19	1.976	
12,300.0	7,746.6	12,329.2	7,837.1	92.5	91.5	-105.33	4,583.7	1,112.1	342.3	165.5	176.81	1.936	
12,400.0	7,746.4	12,429.2	7,836.9	94.4	93.3	-105.33	4,683.7	1,112.4	342.3	161.8	180.43	1.897	
12,500.0	7,746.2	12,529.2	7,836.7	96.2	95.2	-105.33	4,783.7	1,112.8	342.3	158.2	184.06	1.860	
12,600.0	7,746.0	12,629.2	7,836.5	98.0	97.0	-105.33	4,883.7	1,113.1	342.3	154.6	187.69	1.824	
12,700.0	7,745.9	12,729.2	7,836.3	99.8	98.9	-105.32	4,983.7	1,113.5	342.3	150.9	191.33	1.789	
12,800.0	7,745.7	12,829.2	7,836.1	101.7	100.7	-105.32	5,083.7	1,113.8	342.3	147.3	194.97	1.755	
12,900.0	7,745.5	12,929.2	7,835.9	103.5	102.6	-105.32	5,183.6	1,114.1	342.2	143.6	198.61	1.723	
13,000.0	7,745.3	13,029.2	7,835.7	105.3	104.4	-105.32	5,283.6	1,114.5	342.2	140.0	202.25	1.692	
13,100.0	7,745.1	13,129.2	7,835.5	107.2	106.3	-105.32	5,383.6	1,114.8	342.2	136.3	205.90	1.662	
13,200.0	7,744.9	13,229.2	7,835.3	109.0	108.1	-105.32	5,483.6	1,115.2	342.2	132.7	209.55	1.633	
13,300.0	7,744.7	13,329.2	7,835.1	110.9	110.0	-105.31	5,583.6	1,115.5	342.2	129.0	213.20	1.605	
13,400.0	7,744.6	13,429.2	7,834.9	112.7	111.9	-105.31	5,683.6	1,115.8	342.2	125.4	216.86	1.578	
13,500.0	7,744.4	13,529.2	7,834.7	114.6	113.7	-105.31	5,783.6	1,116.2	342.2	121.7	220.51	1.552	
13,600.0	7,744.2	13,629.2	7,834.5	116.4	115.6	-105.31	5,883.6	1,116.5	342.2	118.0	224.17	1.527	
13,700.0	7,744.0	13,729.2	7,834.3	118.3	117.5	-105.31	5,983.6	1,116.9	342.2	114.4	227.83	1.502	
13,800.0	7,743.8	13,829.2	7,834.1	120.1	119.3	-105.30	6,083.6	1,117.2	342.2	110.7	231.49	1.478 Level 3	
13,900.0	7,743.6	13,929.2	7,833.9	122.0	121.2	-105.30	6,183.6	1,117.5	342.2	107.1	235.15	1.455 Level 3	
14,000.0	7,743.4	14,029.2	7,833.7	123.9	123.1	-105.30	6,283.6	1,117.9	342.2	103.4	238.82	1.433 Level 3	
14,100.0	7,743.3	14,129.2	7,833.5	125.7	125.0	-105.30	6,383.6	1,118.2	342.2	99.7	242.48	1.411 Level 3	
14,200.0	7,743.1	14,229.2	7,833.3	127.6	126.8	-105.30	6,483.6	1,118.6	342.2	96.0	246.15	1.390 Level 3	
14,300.0	7,742.9	14,329.2	7,833.1	129.5	128.7	-105.29	6,583.6	1,118.9	342.2	92.4	249.82	1.370 Level 3	
14,400.0	7,742.7	14,429.2	7,832.9	131.3	130.6	-105.29	6,683.6	1,119.2	342.2	88.7	253.49	1.350 Level 3	
14,500.0	7,742.5	14,529.2	7,832.7	133.2	132.5	-105.29	6,783.6	1,119.6	342.2	85.0	257.16	1.331 Level 3	
14,600.0	7,742.3	14,629.2	7,832.5	135.1	134.4	-105.29	6,883.6	1,119.9	342.2	81.3	260.84	1.312 Level 3	
14,700.0	7,742.1	14,729.2	7,832.3	136.9	136.2	-105.29	6,983.6	1,120.3	342.2	77.7	264.51	1.294 Level 3	
14,800.0	7,742.0	14,829.2	7,832.2	138.8	138.1	-105.28	7,083.6	1,120.6	342.2	74.0	268.18	1.276 Level 3	
14,900.0	7,741.8	14,929.2	7,832.0	140.7	140.0	-105.28	7,183.6	1,120.9	342.2	70.3	271.86	1.259 Level 3	
15,000.0	7,741.6	15,029.2	7,831.8	142.5	141.9	-105.28	7,283.6	1,121.3	342.2	66.6	275.54	1.242 Level 2	
15,100.0	7,741.4	15,129.2	7,831.6	144.4	143.8	-105.28	7,383.6	1,121.6	342.1	62.9	279.22	1.225 Level 2	
15,200.0	7,741.2	15,229.2	7,831.4	146.3	145.7	-105.28	7,483.6	1,122.0	342.1	59.2	282.90	1.209 Level 2	
15,300.0	7,741.0	15,329.2	7,831.2	148.2	147.5	-105.27	7,583.6	1,122.3	342.1	55.6	286.58	1.194 Level 2	

CC - Min centre to center distance or convergent point, SF - min separation factor, ES - min ellipse separation

<b>Company:</b>	Bayswater Exploration & Production, LLC	<b>Local Co-ordinate Reference:</b>	Well Ivey P-11-2HN
<b>Project:</b>	SEC.11-T1S-R68W	<b>TVD Reference:</b>	WELL @ 5128.5ft (RKB - 22.5')
<b>Reference Site:</b>	Ivey Pad Sec.11-T1S-R68W	<b>MD Reference:</b>	WELL @ 5128.5ft (RKB - 22.5')
<b>Site Error:</b>	0.0ft	<b>North Reference:</b>	True
<b>Reference Well:</b>	Ivey P-11-2HN	<b>Survey Calculation Method:</b>	Minimum Curvature
<b>Well Error:</b>	0.0ft	<b>Output errors are at</b>	2.00 sigma
<b>Reference Wellbore</b>	Wellbore #1	<b>Database:</b>	landmark
<b>Reference Design:</b>	Plan #1 (9-4-14)	<b>Offset TVD Reference:</b>	Offset Datum

<b>Offset Design</b> Ivey Pad Sec.11-T1S-R68W - Ivey O-11-2HN - Wellbore #1 - Plan #1 (9-4-14)												<b>Offset Site Error:</b>	0.0 ft
Survey Program: 0-MWD												<b>Offset Well Error:</b>	0.0 ft
Reference		Offset		Semi Major Axis			Distance						
Measured Depth (ft)	Vertical Depth (ft)	Measured Depth (ft)	Vertical Depth (ft)	Reference (ft)	Offset (ft)	Highside Toolface (°)	Offset Wellbore Centre +N/-S (ft)	+E/-W (ft)	Between Centres (ft)	Between Ellipses (ft)	Minimum Separation (ft)	Separation Factor	Warning
15,400.0	7,740.8	15,429.2	7,831.0	150.0	149.4	-105.27	7,683.6	1,122.6	342.1	51.9	290.26	1.179	Level 2
15,500.0	7,740.7	15,529.2	7,830.8	151.9	151.3	-105.27	7,783.6	1,123.0	342.1	48.2	293.94	1.164	Level 2
15,600.0	7,740.5	15,629.2	7,830.6	153.8	153.2	-105.27	7,883.6	1,123.3	342.1	44.5	297.63	1.150	Level 2
15,700.0	7,740.3	15,729.2	7,830.4	155.7	155.1	-105.27	7,983.6	1,123.7	342.1	40.8	301.31	1.135	Level 2
15,800.0	7,740.1	15,829.2	7,830.2	157.6	157.0	-105.26	8,083.6	1,124.0	342.1	37.1	304.99	1.122	Level 2
15,900.0	7,739.9	15,929.2	7,830.0	159.5	158.9	-105.26	8,183.6	1,124.3	342.1	33.4	308.68	1.108	Level 2
16,000.0	7,739.7	16,029.2	7,829.8	161.3	160.8	-105.26	8,283.6	1,124.7	342.1	29.7	312.37	1.095	Level 2
16,100.0	7,739.5	16,129.2	7,829.6	163.2	162.7	-105.26	8,383.6	1,125.0	342.1	26.0	316.05	1.082	Level 2
16,200.0	7,739.4	16,229.2	7,829.4	165.1	164.5	-105.26	8,483.6	1,125.3	342.1	22.4	319.74	1.070	Level 2
16,300.0	7,739.2	16,329.2	7,829.2	167.0	166.4	-105.25	8,583.6	1,125.7	342.1	18.7	323.43	1.058	Level 2
16,364.3	7,739.0	16,393.5	7,829.0	168.2	167.7	-105.25	8,647.9	1,125.9	342.1	16.3	325.80	1.050	Level 2
16,388.8	7,739.0	16,416.7	7,829.0	168.7	168.1	-105.25	8,671.1	1,126.0	342.1	15.5	326.62	1.047	Level 2, SF

<b>Company:</b>	Bayswater Exploration & Production, LLC	<b>Local Co-ordinate Reference:</b>	Well Ivey P-11-2HN
<b>Project:</b>	SEC.11-T1S-R68W	<b>TVD Reference:</b>	WELL @ 5128.5ft (RKB - 22.5')
<b>Reference Site:</b>	Ivey Pad Sec.11-T1S-R68W	<b>MD Reference:</b>	WELL @ 5128.5ft (RKB - 22.5')
<b>Site Error:</b>	0.0ft	<b>North Reference:</b>	True
<b>Reference Well:</b>	Ivey P-11-2HN	<b>Survey Calculation Method:</b>	Minimum Curvature
<b>Well Error:</b>	0.0ft	<b>Output errors are at</b>	2.00 sigma
<b>Reference Wellbore</b>	Wellbore #1	<b>Database:</b>	landmark
<b>Reference Design:</b>	Plan #1 (9-4-14)	<b>Offset TVD Reference:</b>	Offset Datum

Offset Design Ivey Pad Sec.11-T1S-R68W - Ivey P-11-12HN - Wellbore #1 - Plan #1 (8-21-14)													Offset Site Error:	0.0 ft
Survey Program: 0-MWD													Offset Well Error:	0.0 ft
Reference		Offset		Semi Major Axis			Distance							Warning
Measured Depth	Vertical Depth	Measured Depth	Vertical Depth	Reference	Offset	Highside Toolface	Offset Wellbore Centre		Between Centres	Between Ellipses	Minimum Separation	Separation Factor		
(ft)	(ft)	(ft)	(ft)	(ft)	(ft)	(°)	+N/-S (ft)	+E/-W (ft)	(ft)	(ft)	(ft)			
0.0	0.0	1.0	1.0	0.0	0.0	-137.91	-140.2	-126.7	189.0					
100.0	100.0	101.0	101.0	0.1	0.1	-137.91	-140.2	-126.7	189.0	188.8	0.23	832.512		
166.3	166.3	167.3	167.3	0.3	0.3	-137.91	-140.2	-126.7	189.0	188.5	0.53	359.855 CC		
200.0	200.0	200.0	200.0	0.3	0.3	-137.91	-140.2	-126.7	189.0	188.3	0.67	280.283 ES		
300.0	300.0	294.8	294.8	0.6	0.5	128.16	-141.2	-127.9	191.7	190.6	1.09	175.619		
400.0	399.8	388.0	387.9	0.8	0.7	129.39	-143.9	-131.7	199.8	198.3	1.53	130.913		
500.0	499.5	480.2	479.8	1.0	1.0	131.22	-148.4	-137.7	213.6	211.6	2.00	107.016		
600.0	598.7	570.8	569.7	1.3	1.2	133.36	-154.4	-146.0	233.0	230.5	2.49	93.630		
700.0	697.5	659.2	657.3	1.6	1.5	135.58	-162.0	-156.3	258.4	255.3	3.01	85.963		
800.0	795.6	745.1	741.9	2.0	1.8	137.69	-170.9	-168.3	289.6	286.0	3.54	81.750		
900.0	893.1	828.2	823.2	2.5	2.1	139.74	-180.9	-182.0	326.4	322.3	4.09	79.760		
1,000.0	990.4	915.0	907.7	2.9	2.5	141.83	-192.6	-197.8	366.5	361.8	4.64	78.936		
1,100.0	1,087.7	1,005.7	996.0	3.4	3.0	143.59	-204.9	-214.6	407.2	402.0	5.18	78.617		
1,200.0	1,185.0	1,096.4	1,084.3	3.9	3.4	145.03	-217.2	-231.3	448.1	442.4	5.72	78.327		
1,300.0	1,282.3	1,187.1	1,172.5	4.4	3.8	146.23	-229.5	-248.1	489.3	483.0	6.27	78.065		
1,400.0	1,379.6	1,277.8	1,260.8	4.9	4.3	147.25	-241.8	-264.8	530.6	523.8	6.82	77.793		
1,500.0	1,476.9	1,368.5	1,349.1	5.4	4.7	148.12	-254.1	-281.6	572.0	564.6	7.37	77.571 SF		

<b>Company:</b>	Bayswater Exploration & Production, LLC	<b>Local Co-ordinate Reference:</b>	Well Ivey P-11-2HN
<b>Project:</b>	SEC.11-T1S-R68W	<b>TVD Reference:</b>	WELL @ 5128.5ft (RKB - 22.5')
<b>Reference Site:</b>	Ivey Pad Sec.11-T1S-R68W	<b>MD Reference:</b>	WELL @ 5128.5ft (RKB - 22.5')
<b>Site Error:</b>	0.0ft	<b>North Reference:</b>	True
<b>Reference Well:</b>	Ivey P-11-2HN	<b>Survey Calculation Method:</b>	Minimum Curvature
<b>Well Error:</b>	0.0ft	<b>Output errors are at</b>	2.00 sigma
<b>Reference Wellbore</b>	Wellbore #1	<b>Database:</b>	landmark
<b>Reference Design:</b>	Plan #1 (9-4-14)	<b>Offset TVD Reference:</b>	Offset Datum

Reference Depths are relative to WELL @ 5128.5ft (RKB - 22.5')

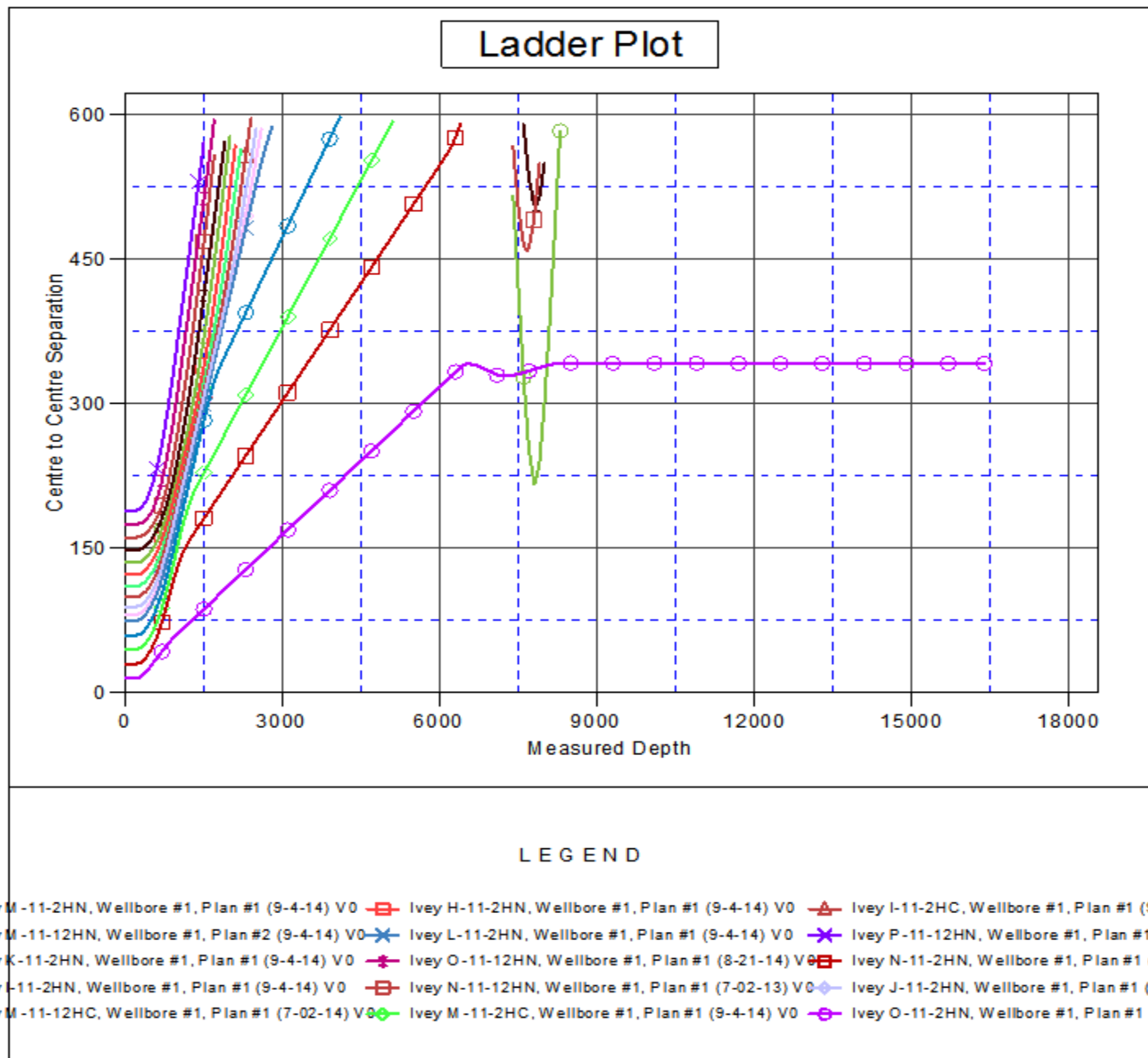
Offset Depths are relative to Offset Datum

Central Meridian is -105.500000 °

Coordinates are relative to: Ivey P-11-2HN

Coordinate System is US State Plane 1983, Colorado Northern Zone

Grid Convergence at Surface is: 0.35°



<b>Company:</b>	Bayswater Exploration & Production, LLC	<b>Local Co-ordinate Reference:</b>	Well Ivey P-11-2HN
<b>Project:</b>	SEC.11-T1S-R68W	<b>TVD Reference:</b>	WELL @ 5128.5ft (RKB - 22.5')
<b>Reference Site:</b>	Ivey Pad Sec.11-T1S-R68W	<b>MD Reference:</b>	WELL @ 5128.5ft (RKB - 22.5')
<b>Site Error:</b>	0.0ft	<b>North Reference:</b>	True
<b>Reference Well:</b>	Ivey P-11-2HN	<b>Survey Calculation Method:</b>	Minimum Curvature
<b>Well Error:</b>	0.0ft	<b>Output errors are at</b>	2.00 sigma
<b>Reference Wellbore</b>	Wellbore #1	<b>Database:</b>	landmark
<b>Reference Design:</b>	Plan #1 (9-4-14)	<b>Offset TVD Reference:</b>	Offset Datum

Reference Depths are relative to WELL @ 5128.5ft (RKB - 22.5')

Offset Depths are relative to Offset Datum

Central Meridian is -105.500000 °

Coordinates are relative to: Ivey P-11-2HN

Coordinate System is US State Plane 1983, Colorado Northern Zone

Grid Convergence at Surface is: 0.35°

