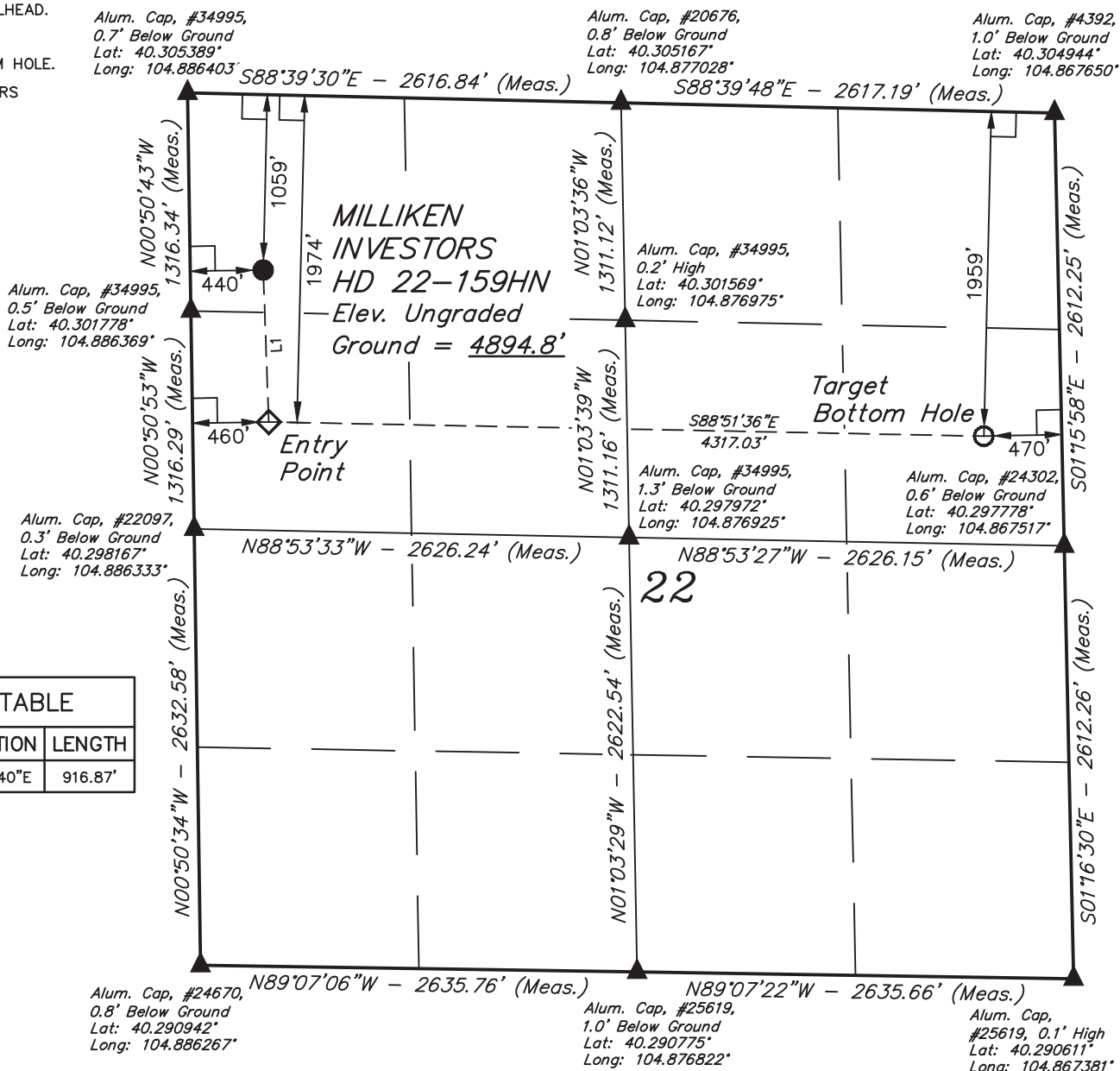


LEGEND:

- = 90° SYMBOL
- = PROPOSED WELLHEAD.
- ◆ = ENTRY POINT.
- = TARGET BOTTOM HOLE.
- ▲ = SECTION CORNERS LOCATED.

T4N, R67W, 6th P.M.



NAD 83 (TARGET BOTTOM HOLE)	
LATITUDE = 40°17'58.58" (40.299606)	
LONGITUDE = 104°52'09.25" (104.869236)	
NAD 27 (TARGET BOTTOM HOLE)	
LATITUDE = 40°17'58.64" (40.299622)	
LONGITUDE = 104°52'07.34" (104.868706)	
NAD 83 (ENTRY POINT)	
LATITUDE = 40°17'59.75" (40.299931)	
LONGITUDE = 104°53'04.93" (104.884703)	
NAD 27 (ENTRY POINT)	
LATITUDE = 40°17'59.81" (40.299947)	
LONGITUDE = 104°53'03.02" (104.884172)	
NAD 83 (SURFACE LOCATION)	
LATITUDE = 40°18'08.80" (40.302444)	
LONGITUDE = 104°53'05.27" (104.884797)	
NAD 27 (SURFACE LOCATION)	
LATITUDE = 40°18'08.87" (40.302464)	
LONGITUDE = 104°53'03.36" (104.884267)	



CERTIFICATE

THIS IS TO CERTIFY THAT THE ABOVE PLAT WAS PREPARED FROM FIELD NOTES OF ACTUAL SURVEYS MADE BY ME OR UNDER MY SUPERVISION AND THAT THE SAME ARE TRUE AND CORRECT TO THE BEST OF MY KNOWLEDGE AND BELIEF.

[Signature] 28285

REGISTERED LAND SURVEYOR
REGISTRATION NO. 28285
STATE OF COLORADO

BASIS OF BEARINGS
BASIS OF BEARINGS IS A G.P.S. OBSERVATION

BASIS OF ELEVATION

USGS COOPERATIVE BASE NETWORK CONTROL STATION, DESIGNATION "VERMILYEA". NGS DATA SHEET LISTS THE NAVD 88 ELEVATION AS BEING 5026 FEET.

GREAT WESTERN OIL & GAS COMPANY

MILLIKEN INVESTORS HD 22-159HN
NW 1/4 NW 1/4, SECTION 22, T4N, R67W, 6th P.M.
WELD COUNTY, COLORADO

SURVEYED BY: DALLAS NIELSEN, J.S.	DATE: 11-13-14
DRAWN BY: J.W.	DATE DRAWN: 11-19-14
SCALE: 1" = 1000'	REVISED: 00-00-00

WELL LOCATION PLAT



UELS, LLC
Corporate Office * 85 South 200 East
Vernal, UT 84078 * (435) 789-1017

