

1801 Broadway
Suite 500
Denver, Colorado 80202



Callie Fiddes
Regulatory Compliance Specialist
Tel: 303.398.0550
E-mail: cfiddes@gwogco.com

May 11, 2015

Colorado Oil and Gas Conservation Commission
1120 Lincoln Street, Suite 801
Denver, Colorado 80203

RE: **Proposed Wellbore Spacing Unit**
Milliken Investors HD 22-159HN

Niobrara New Drill
Township 4 North, Range 67 West, 6th P.M.
NWNW Section 22
Weld County, Colorado

Dear Director:

Great Western Operating Company, LLC is planning to drill the above captioned well in accordance with the provisions of COGCC Rule 318A.e.

Great Western proposed wellbore spacing unit consists of:

- **N2 Sec 22-4N-67W**
- **320 Acres**

The 30 day notification time period has passed and we have not received any objections to such well locations or proposed spacing unit, therefore Great Western hereby requests the Director to approve the above mentioned well. Great Western Operating Company, LLC respectfully requests that the COGCC review the enclosed map illustrating the proposed wellbore spacing unit.

Respectfully,

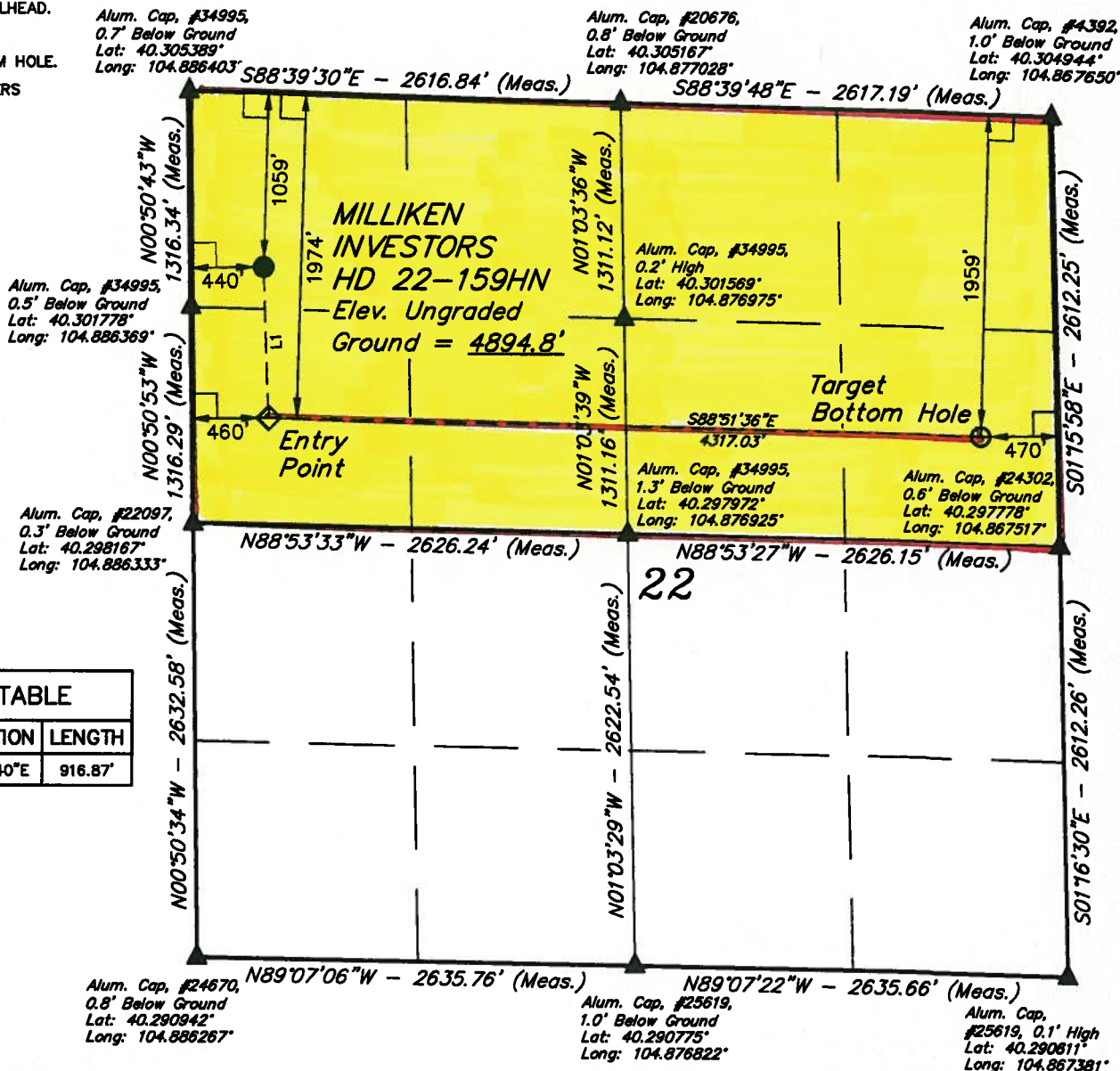
Callie Fiddes

Callie Fiddes
Regulatory Compliance Specialist
Great Western Operating Company, LLC

LEGEND:

- = 90° SYMBOL
- = PROPOSED WELLHEAD.
- ◆ = ENTRY POINT.
- = TARGET BOTTOM HOLE.
- ▲ = SECTION CORNERS LOCATED.

T4N, R67W, 6th P.M.



LINE TABLE		
LINE	DIRECTION	LENGTH
L1	S02°05'40"E	916.87'

PDOP = 1.3

NAD 83 (TARGET BOTTOM HOLE)
LATITUDE = 40°17'58.58" (40.299606)
LONGITUDE = 104°52'09.25" (104.869236)
NAD 27 (TARGET BOTTOM HOLE)
LATITUDE = 40°17'58.64" (40.299622)
LONGITUDE = 104°52'07.34" (104.868706)
NAD 83 (ENTRY POINT)
LATITUDE = 40°17'59.75" (40.299931)
LONGITUDE = 104°53'04.93" (104.884703)
NAD 27 (ENTRY POINT)
LATITUDE = 40°17'59.81" (40.299947)
LONGITUDE = 104°53'03.02" (104.884172)

NAD 83 (SURFACE LOCATION)
LATITUDE = 40°18'08.80" (40.302444)
LONGITUDE = 104°53'05.27" (104.884797)
NAD 27 (SURFACE LOCATION)
LATITUDE = 40°18'08.87" (40.302464)
LONGITUDE = 104°53'03.36" (104.884267)

CERTIFICATE
THIS IS TO CERTIFY THAT THE ABOVE PLAT WAS PREPARED FROM FIELD NOTES OF ACTUAL SURVEYS MADE BY ME OR UNDER MY SUPERVISION AND THAT THE SAME ARE TRUE AND CORRECT TO THE BEST OF MY KNOWLEDGE AND BELIEF.

REGISTERED LAND SURVEYOR
REGISTRATION NO. 28285
STATE OF COLORADO
JAN 15

BASIS OF BEARINGS
BASIS OF BEARINGS IS A G.P.S. OBSERVATION
BASIS OF ELEVATION

USGS COOPERATIVE BASE NETWORK CONTROL STATION, DESIGNATION "VERMILYEA". NGS DATA SHEET LISTS THE NAVD 88 ELEVATION AS BEING 5026 FEET.



UELS, LLC
Corporate Office * 85 South 200 East
Vernal, UT 84078 * (435) 789-1017

GREAT WESTERN OIL & GAS COMPANY

MILLIKEN INVESTORS HD 22-159HN
NW 1/4 NW 1/4, SECTION 22, T4N, R67W, 6th P.M.
WELD COUNTY, COLORADO

SURVEYED BY: DALLAS NIELSEN, J.S.	DATE: 11-13-14
DRAWN BY: J.W.	DATE DRAWN: 11-19-14
SCALE: 1" = 1000'	REVISED: 00-00-00

WELL LOCATION PLAT