

BONANZA CREEK ENERGY INC.

WELD COUNTY, COLORADO (NAD 83)

NW NW SEC. 22 T5N R61W 6th P.M.

PRONGHORN F-J-22HNB

ORIGINAL WELLBORE

10 August, 2015

Plan: PROPOSAL #3





Project: WELD COUNTY, COLORADO (NAD 83)
Site: NW NW SEC. 22 T5N R61W 6th P.M.
Well: PRONGHORN F-J-22HNB
Wellbore: ORIGINAL WELLBORE
Design: PROPOSAL #3

ANNOTATIONS

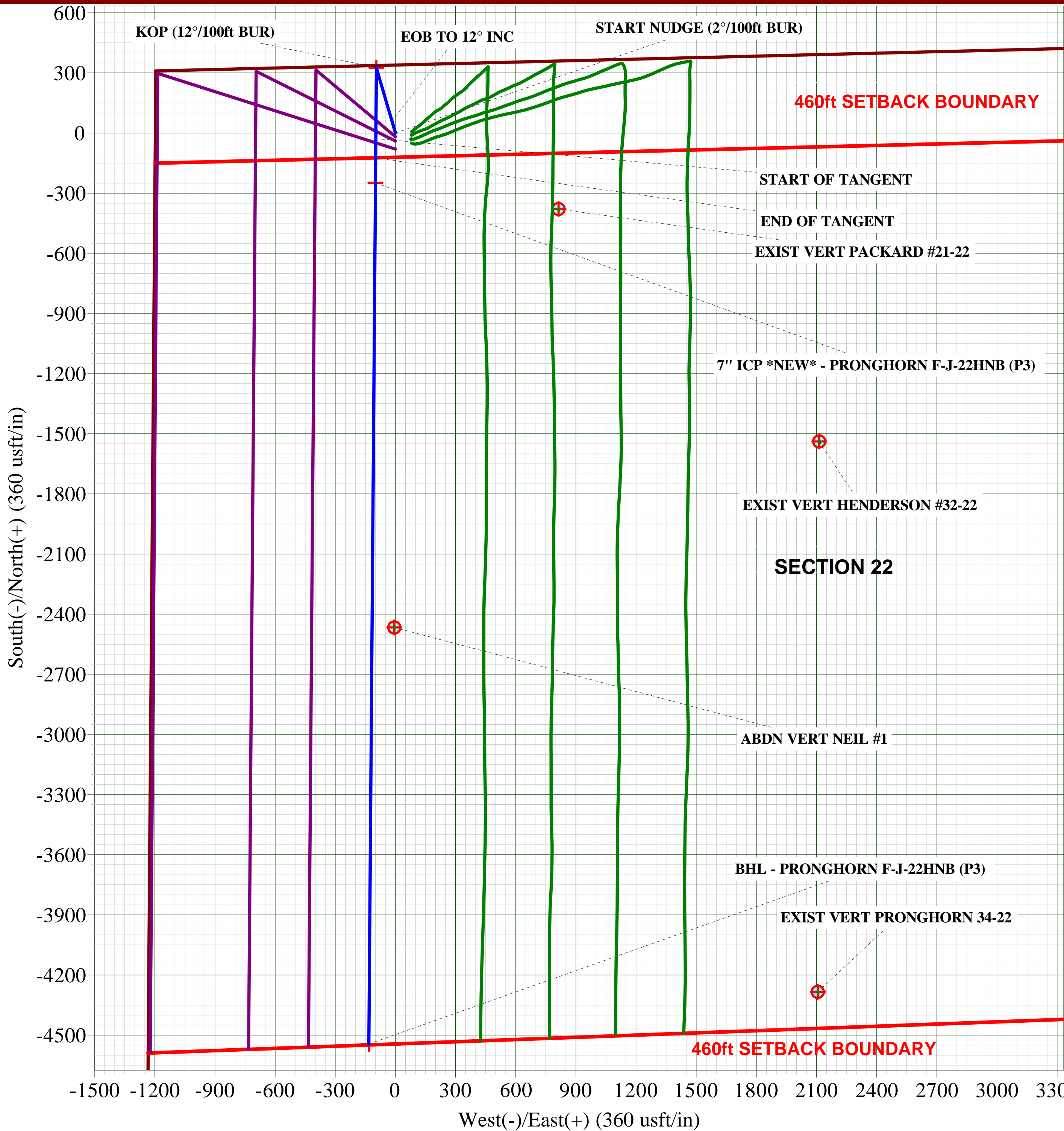
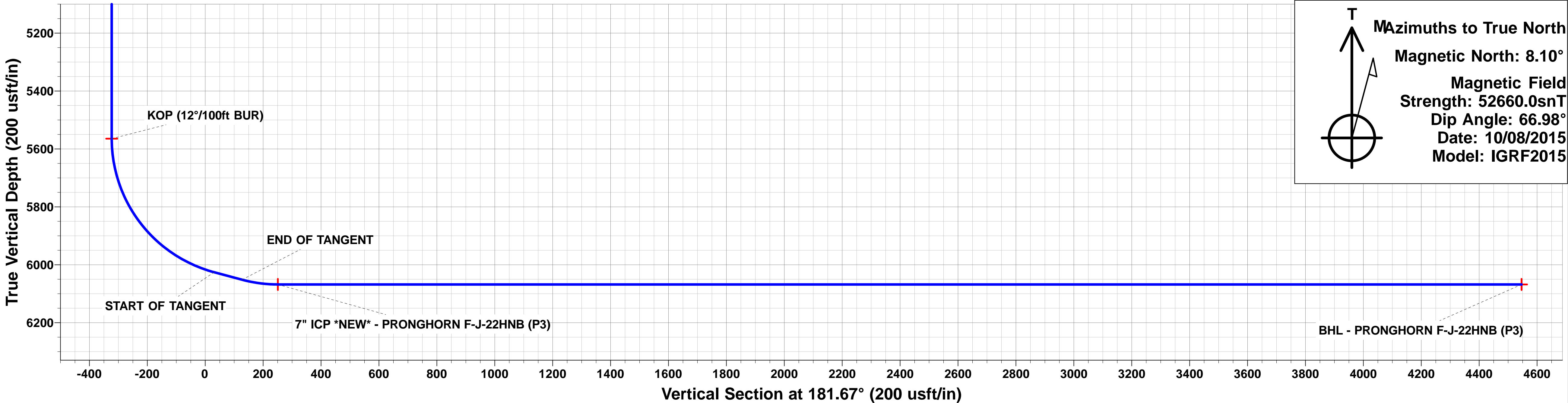
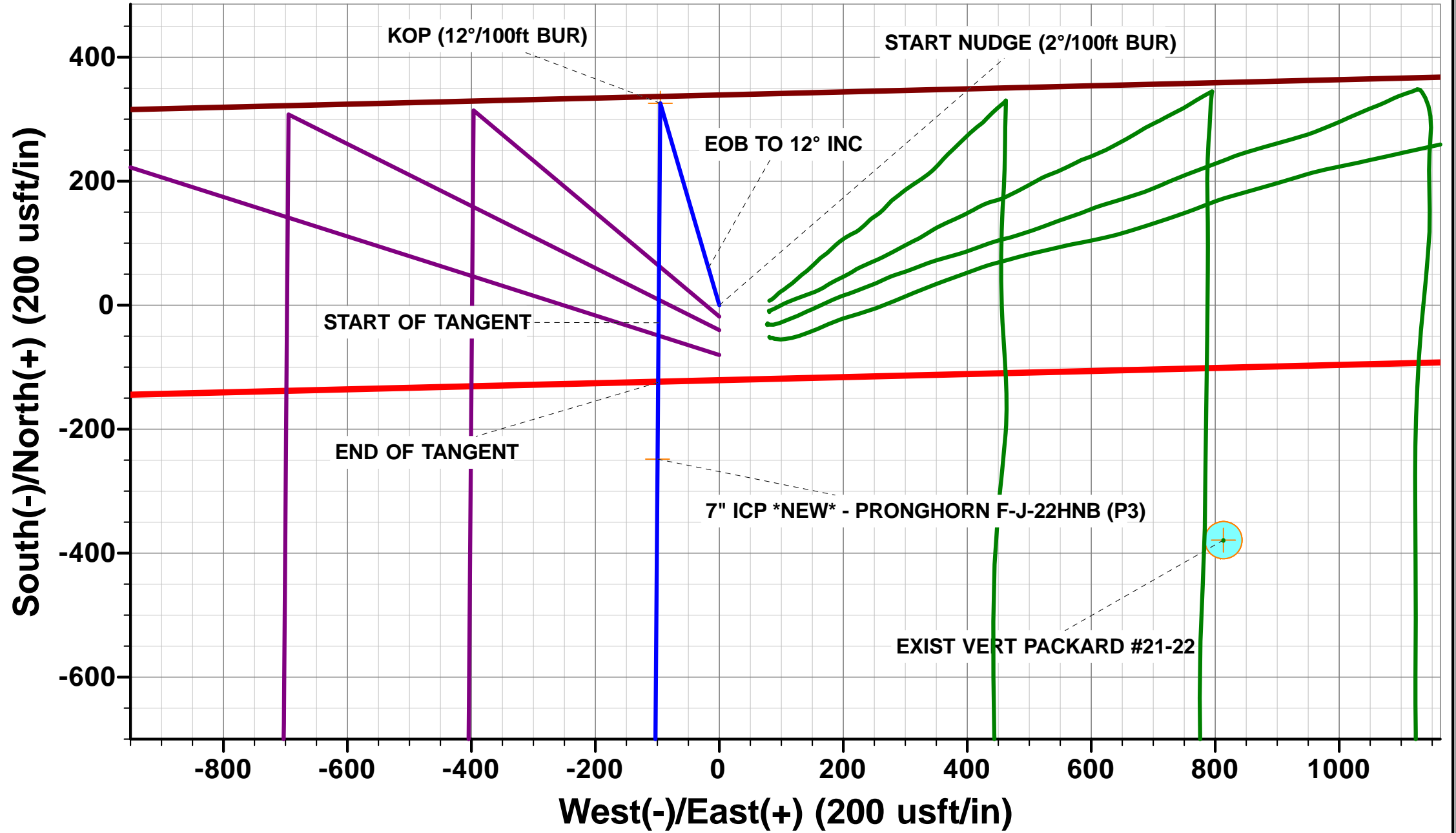
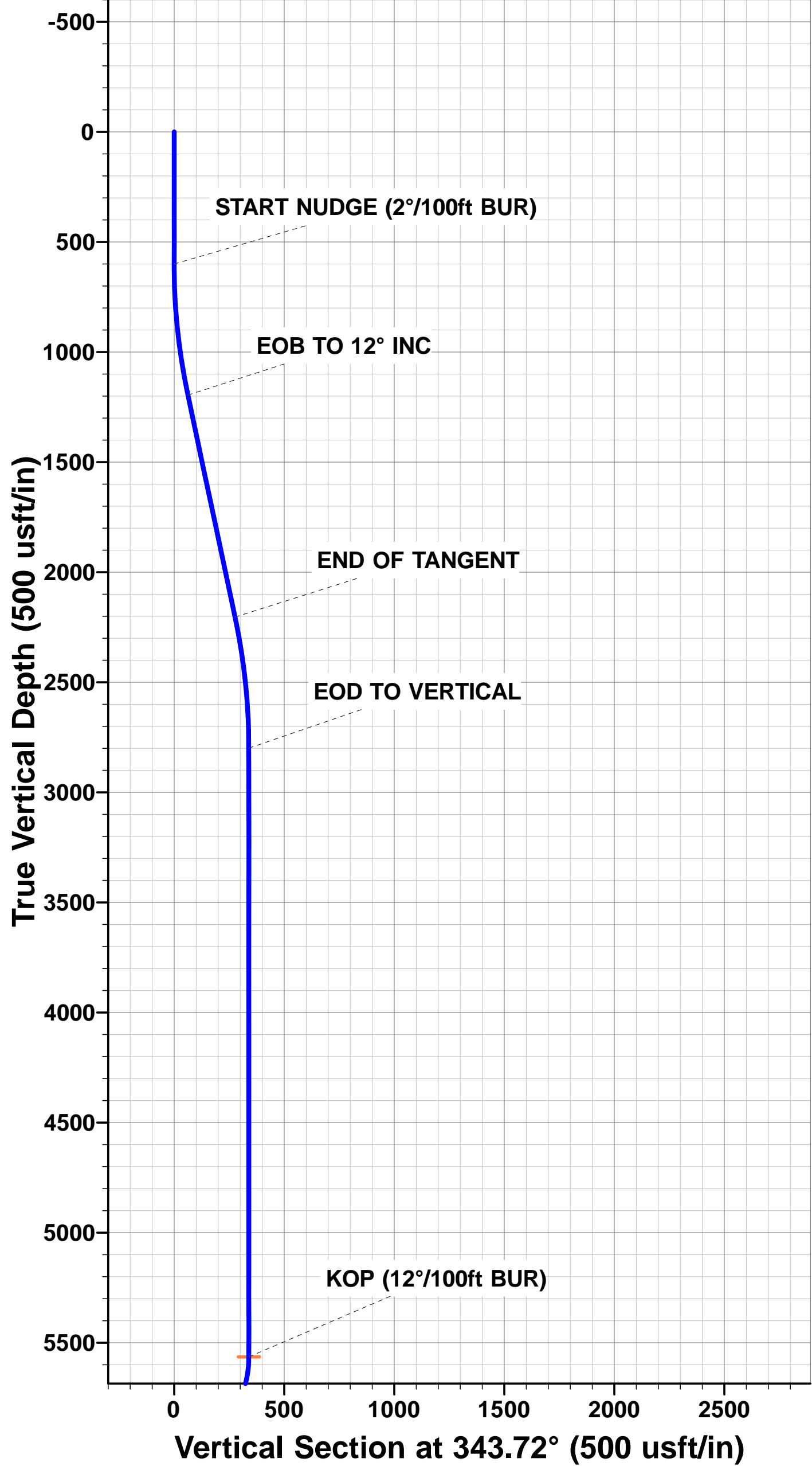
TVD	MD	Inc	Azi	+N/-S	+E/-W	VSect	Dep	Annotation
600.0	600.0	0.00	0.00	0.0	0.0	0.0	0.0	START NUDGE (2°/100ft BUR)
1195.5	1199.9	12.00	343.72	60.1	-17.5	-59.5	62.6	EOB TO 12° INC
2204.2	2231.1	12.00	343.72	265.8	-77.7	-263.5	276.9	END OF TANGENT
2799.7	2831.0	0.00	0.00	325.9	-95.2	-323.0	339.5	EOD TO VERTICAL
5564.7	5596.0	0.00	0.00	325.9	-95.2	-323.0	339.5	KOP (12°/100ft BUR)
6025.9	6221.0	75.00	180.44	-28.0	-97.9	30.8	693.4	START OF TANGENT
6051.8	6321.0	75.00	180.44	-124.6	-98.7	127.4	790.0	END OF TANGENT
6068.0	6446.0	90.00	180.44	-248.2	-99.6	251.0	913.6	7" ICP *NEW* - PRONGHORN F-J-22HNB (P3)
6068.0	10742.3	90.00	180.44	-4544.3	-132.5	4546.2	5209.9	BHL - PRONGHORN F-J-22HNB (P3)

LOCAL COORDINATES:

SHL: 339ft FNL & 1199ft FWL Sec 22
7" ICP *NEW*: ft 589ft FNL & 1100ft FWL Sec 22
BHL: 470ft FSL & 1100ft FWL Sec 22

WELLBORE TARGET DETAILS (LAT/LONG)

Name	TVD	+N/-S	+E/-W	Latitude	Longitude
KOP - PRONGHORN F-J-22HNB (P3)	5564.7	325.9	-95.2	40.393625	-104.200482
BHL - PRONGHORN F-J-22HNB (P3)	6068.0	-4544.3	-132.5	40.380256	-104.200616
7" ICP *NEW* - PRONGHORN F-J-22HNB (P3)	6068.0	-248.1	-99.6	40.392049	-104.200498



Database:	EDM 5000.1 Single User Db	Local Co-ordinate Reference:	Well PRONGHORN F-J-22HNB
Company:	BONANZA CREEK ENERGY INC.	TVD Reference:	KB-EST @ 4678.0usft (Original Well Elev)
Project:	WELD COUNTY, COLORADO (NAD 83)	MD Reference:	KB-EST @ 4678.0usft (Original Well Elev)
Site:	NW NW SEC. 22 T5N R61W 6th P.M.	North Reference:	True
Well:	PRONGHORN F-J-22HNB	Survey Calculation Method:	Minimum Curvature
Wellbore:	ORIGINAL WELLBORE		
Design:	PROPOSAL #3		

Project	WELD COUNTY, COLORADO (NAD 83)		
Map System:	US State Plane 1983	System Datum:	Mean Sea Level
Geo Datum:	North American Datum 1983		
Map Zone:	Colorado Northern Zone		Using geodetic scale factor

Site	NW NW SEC. 22 T5N R61W 6th P.M.				
Site Position:		Northing:	1,388,515.79 usft	Latitude:	40.392590
From:	Lat/Long	Easting:	3,362,131.84 usft	Longitude:	-104.199850
Position Uncertainty:	0.0 usft	Slot Radius:	1.10000 ft	Grid Convergence:	0.84 °

Well	PRONGHORN F-J-22HNB					
Well Position	+N-S	51.0 usft	Northing:	1,388,565.59 usfi	Latitude:	40.392730
	+E-W	-80.8 usft	Easting:	3,362,050.33 usfi	Longitude:	-104.200140
Position Uncertainty		0.0 usft	Wellhead Elevation:	usfi	Ground Level:	4,661.0 usfi

Wellbore	ORIGINAL WELLBORE				
Magnetics	Model Name	Sample Date	Declination (°)	Dip Angle (°)	Field Strength (nT)
	IGRF2015	10/08/2015	8.10	66.98	52,660

Design	PROPOSAL #3			
Audit Notes:				
Version:	Phase:	PROTOTYPE	Tie On Depth:	0.0
Vertical Section:	Depth From (TVD) (usft)	+N-S (usft)	+E-W (usft)	Direction (°)
	6,068.0	0.0	0.0	181.67

Plan Sections											
MD (usft)	Inc (°)	Azi (°)	Vertical Depth	SS (usft)	+N-S (usft)	+E-W (usft)	Dogleg Rate (°/100usf)	Build Rate (°/100usf)	Turn Rate (°/100usf)	TFO (°)	Target
0.0	0.00	0.00	0.0	-4,678.0	0.0	0.0	0.00	0.00	0.00	0.00	
600.0	0.00	0.00	600.0	-4,078.0	0.0	0.0	0.00	0.00	0.00	0.00	
1,199.9	12.00	343.72	1,195.5	-3,482.5	60.1	-17.5	2.00	2.00	0.00	343.72	
2,231.1	12.00	343.72	2,204.2	-2,473.8	265.8	-77.7	0.00	0.00	0.00	0.00	
2,831.0	0.00	0.00	2,799.7	-1,878.3	325.9	-95.2	2.00	-2.00	0.00	180.00	
5,596.0	0.00	0.00	5,564.7	886.7	325.9	-95.2	0.00	0.00	0.00	0.00	KOP - PRONGHOF
6,221.0	75.00	180.44	6,025.9	1,347.9	-28.0	-97.9	12.00	12.00	0.00	180.44	
6,321.0	75.00	180.44	6,051.8	1,373.8	-124.6	-98.7	0.00	0.00	0.00	0.00	
6,446.0	90.00	180.44	6,068.0	1,390.0	-248.1	-99.6	12.00	12.00	0.00	0.00	
10,742.3	90.00	180.44	6,068.0	1,390.0	-4,544.3	-132.5	0.00	0.00	0.00	-65.26	BHL - PRONGHOR

Database:	EDM 5000.1 Single User Db	Local Co-ordinate Reference:	Well PRONGHORN F-J-22HNB
Company:	BONANZA CREEK ENERGY INC.	TVD Reference:	KB-EST @ 4678.0usft (Original Well Elev)
Project:	WELD COUNTY, COLORADO (NAD 83)	MD Reference:	KB-EST @ 4678.0usft (Original Well Elev)
Site:	NW NW SEC. 22 T5N R61W 6th P.M.	North Reference:	True
Well:	PRONGHORN F-J-22HNB	Survey Calculation Method:	Minimum Curvature
Wellbore:	ORIGINAL WELLBORE		
Design:	PROPOSAL #3		

Planned Survey

MD (usft)	Inc (°)	Azi (°)	TVD (usft)	SS (usft)	+N/-S (usft)	+E/-W (usft)	Vertical Section (usft)	Dogleg Rate (°/100usft)	Build Rate (°/100usft)	Turn Rate (°/100usft)
0.0	0.00	0.00	0.0	4,678.00	0.0	0.0	0.0	0.00	0.00	0.00
100.0	0.00	0.00	100.0	4,578.00	0.0	0.0	0.0	0.00	0.00	0.00
200.0	0.00	0.00	200.0	4,478.00	0.0	0.0	0.0	0.00	0.00	0.00
300.0	0.00	0.00	300.0	4,378.00	0.0	0.0	0.0	0.00	0.00	0.00
400.0	0.00	0.00	400.0	4,278.00	0.0	0.0	0.0	0.00	0.00	0.00
500.0	0.00	0.00	500.0	4,178.00	0.0	0.0	0.0	0.00	0.00	0.00
START NUDGE (2°/100ft BUR)										
600.0	0.00	0.00	600.0	4,078.00	0.0	0.0	0.0	0.00	0.00	0.00
700.0	2.00	343.72	700.0	3,978.02	1.7	-0.5	-1.7	2.00	2.00	0.00
800.0	4.00	343.72	799.8	3,878.16	6.7	-2.0	-6.6	2.00	2.00	0.00
900.0	6.00	343.72	899.5	3,778.55	15.1	-4.4	-14.9	2.00	2.00	0.00
1,000.0	8.00	343.72	998.7	3,679.30	26.8	-7.8	-26.5	2.00	2.00	0.00
1,100.0	10.00	343.72	1,097.5	3,580.53	41.8	-12.2	-41.4	2.00	2.00	0.00
EOB TO 12° INC										
1,199.9	12.00	343.72	1,195.5	3,482.47	60.1	-17.5	-59.5	2.00	2.00	0.00
1,200.0	12.00	343.72	1,195.6	3,482.38	60.1	-17.6	-59.6	0.00	0.00	0.00
1,300.0	12.00	343.72	1,293.4	3,384.56	80.0	-23.4	-79.3	0.00	0.00	0.00
1,400.0	12.00	343.72	1,391.3	3,286.75	100.0	-29.2	-99.1	0.00	0.00	0.00
1,500.0	12.00	343.72	1,489.1	3,188.93	120.0	-35.0	-118.9	0.00	0.00	0.00
1,600.0	12.00	343.72	1,586.9	3,091.11	139.9	-40.9	-138.7	0.00	0.00	0.00
1,700.0	12.00	343.72	1,684.7	2,993.30	159.9	-46.7	-158.4	0.00	0.00	0.00
1,800.0	12.00	343.72	1,782.5	2,895.48	179.8	-52.5	-178.2	0.00	0.00	0.00
1,900.0	12.00	343.72	1,880.3	2,797.67	199.8	-58.4	-198.0	0.00	0.00	0.00
2,000.0	12.00	343.72	1,978.1	2,699.85	219.7	-64.2	-217.8	0.00	0.00	0.00
2,100.0	12.00	343.72	2,076.0	2,602.04	239.7	-70.0	-237.5	0.00	0.00	0.00
2,200.0	12.00	343.72	2,173.8	2,504.22	259.6	-75.8	-257.3	0.00	0.00	0.00
END OF TANGENT										
2,231.1	12.00	343.72	2,204.2	2,473.80	265.8	-77.7	-263.5	0.00	0.00	0.00
2,300.0	10.62	343.72	2,271.8	2,406.24	278.8	-81.4	-276.3	2.00	-2.00	0.00
2,400.0	8.62	343.72	2,370.3	2,307.65	294.8	-86.1	-292.2	2.00	-2.00	0.00
2,500.0	6.62	343.72	2,469.5	2,208.54	307.6	-89.8	-304.8	2.00	-2.00	0.00
2,600.0	4.62	343.72	2,569.0	2,109.03	317.0	-92.6	-314.1	2.00	-2.00	0.00
2,700.0	2.62	343.72	2,668.8	2,009.23	323.0	-94.4	-320.1	2.00	-2.00	0.00
2,800.0	0.62	343.72	2,768.7	1,909.27	325.7	-95.2	-322.8	2.00	-2.00	0.00
EOD TO VERTICAL										
2,831.0	0.00	0.00	2,799.7	1,878.28	325.9	-95.2	-323.0	2.00	-2.00	0.00
2,900.0	0.00	0.00	2,868.7	1,809.28	325.9	-95.2	-323.0	0.00	0.00	0.00
3,000.0	0.00	0.00	2,968.7	1,709.28	325.9	-95.2	-323.0	0.00	0.00	0.00
3,100.0	0.00	0.00	3,068.7	1,609.28	325.9	-95.2	-323.0	0.00	0.00	0.00
3,200.0	0.00	0.00	3,168.7	1,509.28	325.9	-95.2	-323.0	0.00	0.00	0.00
3,300.0	0.00	0.00	3,268.7	1,409.28	325.9	-95.2	-323.0	0.00	0.00	0.00
3,400.0	0.00	0.00	3,368.7	1,309.28	325.9	-95.2	-323.0	0.00	0.00	0.00
3,500.0	0.00	0.00	3,468.7	1,209.28	325.9	-95.2	-323.0	0.00	0.00	0.00
3,600.0	0.00	0.00	3,568.7	1,109.28	325.9	-95.2	-323.0	0.00	0.00	0.00
3,700.0	0.00	0.00	3,668.7	1,009.28	325.9	-95.2	-323.0	0.00	0.00	0.00
3,800.0	0.00	0.00	3,768.7	909.28	325.9	-95.2	-323.0	0.00	0.00	0.00
3,900.0	0.00	0.00	3,868.7	809.28	325.9	-95.2	-323.0	0.00	0.00	0.00
4,000.0	0.00	0.00	3,968.7	709.28	325.9	-95.2	-323.0	0.00	0.00	0.00
4,100.0	0.00	0.00	4,068.7	609.28	325.9	-95.2	-323.0	0.00	0.00	0.00
4,200.0	0.00	0.00	4,168.7	509.28	325.9	-95.2	-323.0	0.00	0.00	0.00
4,300.0	0.00	0.00	4,268.7	409.28	325.9	-95.2	-323.0	0.00	0.00	0.00
4,400.0	0.00	0.00	4,368.7	309.28	325.9	-95.2	-323.0	0.00	0.00	0.00
4,500.0	0.00	0.00	4,468.7	209.28	325.9	-95.2	-323.0	0.00	0.00	0.00
4,600.0	0.00	0.00	4,568.7	109.28	325.9	-95.2	-323.0	0.00	0.00	0.00

Database:	EDM 5000.1 Single User Db	Local Co-ordinate Reference:	Well PRONGHORN F-J-22HNB
Company:	BONANZA CREEK ENERGY INC.	TVD Reference:	KB-EST @ 4678.0usft (Original Well Elev)
Project:	WELD COUNTY, COLORADO (NAD 83)	MD Reference:	KB-EST @ 4678.0usft (Original Well Elev)
Site:	NW NW SEC. 22 T5N R61W 6th P.M.	North Reference:	True
Well:	PRONGHORN F-J-22HNB	Survey Calculation Method:	Minimum Curvature
Wellbore:	ORIGINAL WELLBORE		
Design:	PROPOSAL #3		

Planned Survey										
MD (usft)	Inc (°)	Azi (°)	TVD (usft)	SS (usft)	+N/-S (usft)	+E/-W (usft)	Vertical Section (usft)	Dogleg Rate (°/100usft)	Build Rate (°/100usft)	Turn Rate (°/100usft)
4,700.0	0.00	0.00	4,668.7	9.28	325.9	-95.2	-323.0	0.00	0.00	0.00
4,800.0	0.00	0.00	4,768.7	-90.72	325.9	-95.2	-323.0	0.00	0.00	0.00
4,900.0	0.00	0.00	4,868.7	-190.72	325.9	-95.2	-323.0	0.00	0.00	0.00
5,000.0	0.00	0.00	4,968.7	-290.72	325.9	-95.2	-323.0	0.00	0.00	0.00
5,100.0	0.00	0.00	5,068.7	-390.72	325.9	-95.2	-323.0	0.00	0.00	0.00
5,200.0	0.00	0.00	5,168.7	-490.72	325.9	-95.2	-323.0	0.00	0.00	0.00
5,300.0	0.00	0.00	5,268.7	-590.72	325.9	-95.2	-323.0	0.00	0.00	0.00
5,400.0	0.00	0.00	5,368.7	-690.72	325.9	-95.2	-323.0	0.00	0.00	0.00
5,500.0	0.00	0.00	5,468.7	-790.72	325.9	-95.2	-323.0	0.00	0.00	0.00
KOP (12°/100ft BUR)										
5,596.0	0.00	0.00	5,564.7	-886.72	325.9	-95.2	-323.0	0.00	0.00	0.00
5,600.0	0.48	180.44	5,568.7	-890.72	325.9	-95.2	-323.0	12.07	12.07	0.00
5,700.0	12.48	180.44	5,667.9	-989.90	314.6	-95.3	-311.7	12.00	12.00	0.00
5,800.0	24.48	180.44	5,762.6	-1,084.57	283.0	-95.5	-280.1	12.00	12.00	0.00
5,900.0	36.48	180.44	5,848.6	-1,170.59	232.3	-95.9	-229.4	12.00	12.00	0.00
6,000.0	48.48	180.44	5,922.2	-1,244.21	164.9	-96.4	-162.0	12.00	12.00	0.00
6,100.0	60.48	180.44	5,980.2	-1,302.19	83.7	-97.1	-80.8	12.00	12.00	0.00
6,200.0	72.48	180.44	6,020.0	-1,342.02	-7.8	-97.8	10.7	12.00	12.00	0.00
START OF TANGENT										
6,221.0	75.00	180.44	6,025.9	-1,347.90	-28.0	-97.9	30.8	11.99	11.99	0.00
6,300.0	75.00	180.44	6,046.3	-1,368.35	-104.3	-98.5	107.1	0.00	0.00	0.00
END OF TANGENT										
6,321.0	75.00	180.44	6,051.8	-1,373.78	-124.6	-98.7	127.4	0.00	0.00	0.00
6,400.0	84.48	180.44	6,065.8	-1,387.83	-202.2	-99.3	205.0	12.00	12.00	0.00
7" ICP *NEW* - PRONGHORN F-J-22HNB (P3)										
6,446.0	90.00	180.44	6,068.0	-1,390.05	-248.2	-99.6	251.0	11.99	11.99	0.00
6,500.0	90.00	180.44	6,068.0	-1,390.05	-302.2	-100.0	305.0	0.00	0.00	0.00
6,600.0	90.00	180.44	6,068.0	-1,390.05	-402.2	-100.8	404.9	0.00	0.00	0.00
6,700.0	90.00	180.44	6,068.0	-1,390.05	-502.2	-101.6	504.9	0.00	0.00	0.00
6,800.0	90.00	180.44	6,068.0	-1,390.05	-602.2	-102.3	604.9	0.00	0.00	0.00
6,900.0	90.00	180.44	6,068.0	-1,390.05	-702.2	-103.1	704.9	0.00	0.00	0.00
7,000.0	90.00	180.44	6,068.0	-1,390.05	-802.1	-103.9	804.8	0.00	0.00	0.00
7,100.0	90.00	180.44	6,068.0	-1,390.05	-902.1	-104.6	904.8	0.00	0.00	0.00
7,200.0	90.00	180.44	6,068.0	-1,390.05	-1,002.1	-105.4	1,004.8	0.00	0.00	0.00
7,300.0	90.00	180.44	6,068.0	-1,390.04	-1,102.1	-106.2	1,104.8	0.00	0.00	0.00
7,400.0	90.00	180.44	6,068.0	-1,390.04	-1,202.1	-106.9	1,204.7	0.00	0.00	0.00
7,500.0	90.00	180.44	6,068.0	-1,390.04	-1,302.1	-107.7	1,304.7	0.00	0.00	0.00
7,600.0	90.00	180.44	6,068.0	-1,390.04	-1,402.1	-108.5	1,404.7	0.00	0.00	0.00
7,700.0	90.00	180.44	6,068.0	-1,390.04	-1,502.1	-109.2	1,504.7	0.00	0.00	0.00
7,800.0	90.00	180.44	6,068.0	-1,390.04	-1,602.1	-110.0	1,604.7	0.00	0.00	0.00
7,900.0	90.00	180.44	6,068.0	-1,390.04	-1,702.1	-110.8	1,704.6	0.00	0.00	0.00
8,000.0	90.00	180.44	6,068.0	-1,390.04	-1,802.1	-111.5	1,804.6	0.00	0.00	0.00
8,100.0	90.00	180.44	6,068.0	-1,390.04	-1,902.1	-112.3	1,904.6	0.00	0.00	0.00
8,200.0	90.00	180.44	6,068.0	-1,390.04	-2,002.1	-113.1	2,004.6	0.00	0.00	0.00
8,300.0	90.00	180.44	6,068.0	-1,390.04	-2,102.1	-113.8	2,104.5	0.00	0.00	0.00
8,400.0	90.00	180.44	6,068.0	-1,390.04	-2,202.1	-114.6	2,204.5	0.00	0.00	0.00
8,500.0	90.00	180.44	6,068.0	-1,390.04	-2,302.1	-115.4	2,304.5	0.00	0.00	0.00
8,600.0	90.00	180.44	6,068.0	-1,390.03	-2,402.1	-116.1	2,404.5	0.00	0.00	0.00
8,700.0	90.00	180.44	6,068.0	-1,390.03	-2,502.1	-116.9	2,504.4	0.00	0.00	0.00
8,800.0	90.00	180.44	6,068.0	-1,390.03	-2,602.1	-117.7	2,604.4	0.00	0.00	0.00
8,900.0	90.00	180.44	6,068.0	-1,390.03	-2,702.1	-118.4	2,704.4	0.00	0.00	0.00
9,000.0	90.00	180.44	6,068.0	-1,390.03	-2,802.1	-119.2	2,804.4	0.00	0.00	0.00
9,100.0	90.00	180.44	6,068.0	-1,390.03	-2,902.1	-120.0	2,904.4	0.00	0.00	0.00

Database:	EDM 5000.1 Single User Db	Local Co-ordinate Reference:	Well PRONGHORN F-J-22HNB
Company:	BONANZA CREEK ENERGY INC.	TVD Reference:	KB-EST @ 4678.0usft (Original Well Elev)
Project:	WELD COUNTY, COLORADO (NAD 83)	MD Reference:	KB-EST @ 4678.0usft (Original Well Elev)
Site:	NW NW SEC. 22 T5N R61W 6th P.M.	North Reference:	True
Well:	PRONGHORN F-J-22HNB	Survey Calculation Method:	Minimum Curvature
Wellbore:	ORIGINAL WELLBORE		
Design:	PROPOSAL #3		

Planned Survey

MD (usft)	Inc (°)	Azi (°)	TVD (usft)	SS (usft)	+N/-S (usft)	+E/-W (usft)	Vertical Section (usft)	Dogleg Rate (°/100usft)	Build Rate (°/100usft)	Turn Rate (°/100usft)
9,200.0	90.00	180.44	6,068.0	-1,390.03	-3,002.1	-120.7	3,004.3	0.00	0.00	0.00
9,300.0	90.00	180.44	6,068.0	-1,390.03	-3,102.1	-121.5	3,104.3	0.00	0.00	0.00
9,400.0	90.00	180.44	6,068.0	-1,390.02	-3,202.1	-122.2	3,204.3	0.00	0.00	0.00
9,500.0	90.00	180.44	6,068.0	-1,390.02	-3,302.1	-123.0	3,304.3	0.00	0.00	0.00
9,600.0	90.00	180.44	6,068.0	-1,390.02	-3,402.1	-123.8	3,404.2	0.00	0.00	0.00
9,700.0	90.00	180.44	6,068.0	-1,390.02	-3,502.1	-124.5	3,504.2	0.00	0.00	0.00
9,800.0	90.00	180.44	6,068.0	-1,390.02	-3,602.1	-125.3	3,604.2	0.00	0.00	0.00
9,900.0	90.00	180.44	6,068.0	-1,390.02	-3,702.1	-126.1	3,704.2	0.00	0.00	0.00
10,000.0	90.00	180.44	6,068.0	-1,390.01	-3,802.1	-126.8	3,804.1	0.00	0.00	0.00
10,100.0	90.00	180.44	6,068.0	-1,390.01	-3,902.1	-127.6	3,904.1	0.00	0.00	0.00
10,200.0	90.00	180.44	6,068.0	-1,390.01	-4,002.1	-128.4	4,004.1	0.00	0.00	0.00
10,300.0	90.00	180.44	6,068.0	-1,390.01	-4,102.1	-129.1	4,104.1	0.00	0.00	0.00
10,400.0	90.00	180.44	6,068.0	-1,390.01	-4,202.0	-129.9	4,204.0	0.00	0.00	0.00
10,500.0	90.00	180.44	6,068.0	-1,390.01	-4,302.0	-130.7	4,304.0	0.00	0.00	0.00
10,600.0	90.00	180.44	6,068.0	-1,390.00	-4,402.0	-131.4	4,404.0	0.00	0.00	0.00
10,700.0	90.00	180.44	6,068.0	-1,390.00	-4,502.0	-132.2	4,504.0	0.00	0.00	0.00
BHL - PRONGHORN F-J-22HNB (P3)										
10,742.3	90.00	180.44	6,068.0	-1,390.00	-4,544.3	-132.5	4,546.2	0.00	0.00	0.00

Plan Annotations

MD (usft)	TVD (usft)	Local Coordinates		Comment
		+N/-S (usft)	+E/-W (usft)	
600.0	600.0	0.0	0.0	START NUDGE (2°/100ft BUR)
1,199.9	1,195.5	60.1	-17.5	EOB TO 12° INC
2,231.1	2,204.2	265.8	-77.7	END OF TANGENT
2,831.0	2,799.7	325.9	-95.2	EOD TO VERTICAL
5,596.0	5,564.7	325.9	-95.2	KOP (12°/100ft BUR)
6,221.0	6,025.9	-28.0	-97.9	START OF TANGENT
6,321.0	6,051.8	-124.6	-98.7	END OF TANGENT
6,446.0	6,068.0	-248.2	-99.6	7" ICP *NEW* - PRONGHORN F-J-22HNB (P3)
10,742.3	6,068.0	-4,544.3	-132.5	BHL - PRONGHORN F-J-22HNB (P3)