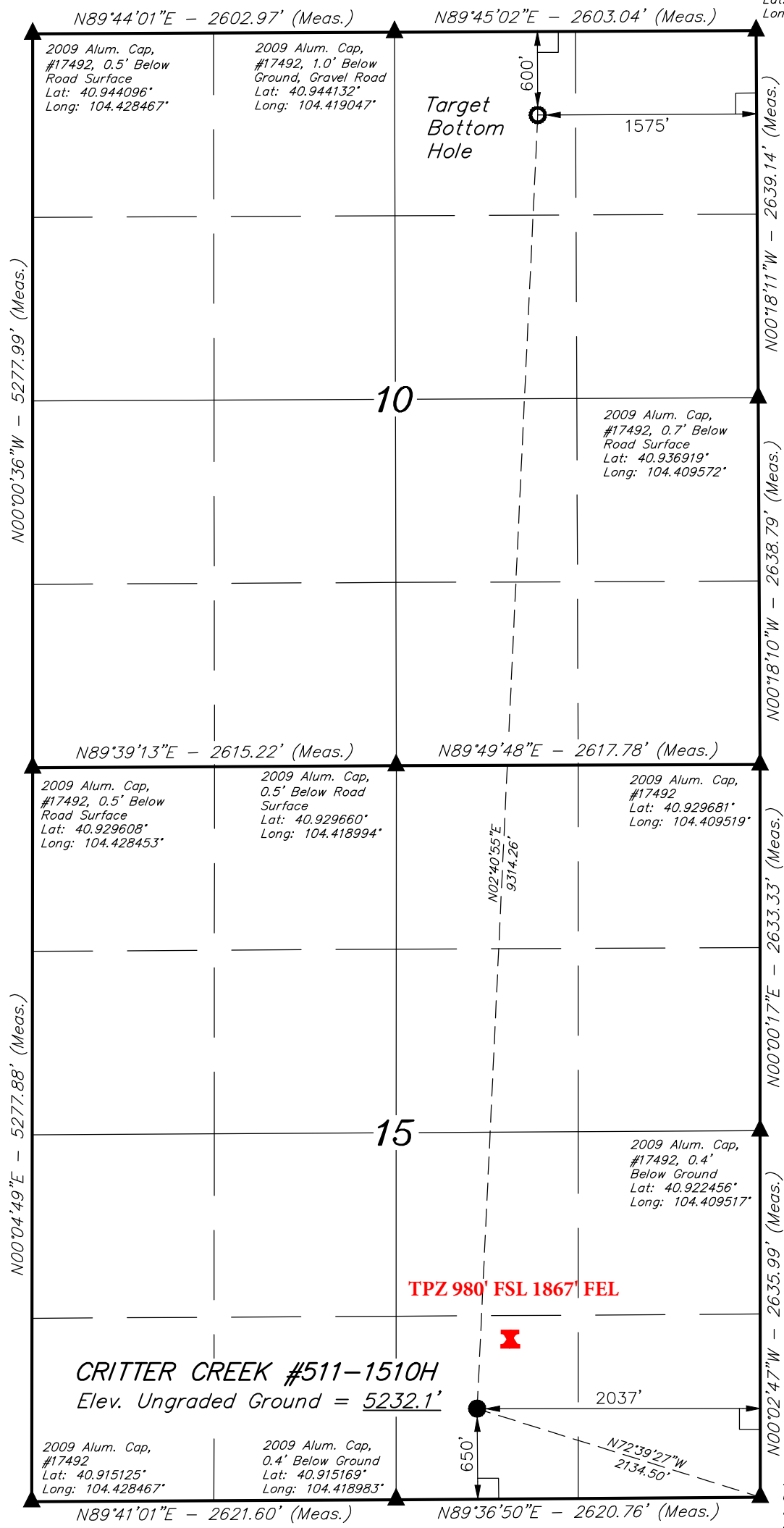


LEGEND:

- └─ = 90° SYMBOL
- = PROPOSED WELLHEAD.
- = TARGET BOTTOM HOLE.
- ▲ = SECTION CORNERS LOCATED.

T11N, R63W, 6th P.M.

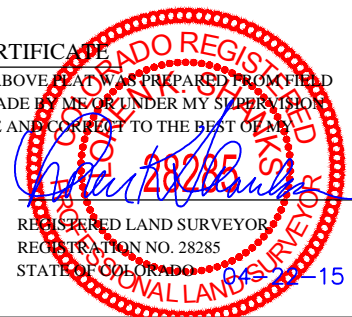
1921 Brass Cap,
1.2' Below Ground,
Gravel Road
Lat: 40.944161°
Long: 104.409628°



NAD 83 (TARGET BOTTOM HOLE)	NAD 83 (SURFACE LOCATION)
LATITUDE = 40°56'32.98" (40.942494)	LATITUDE = 40°55'01.07" (40.916964)
LONGITUDE = 104°24'55.13" (104.415314)	LONGITUDE = 104°25'00.75" (104.416875)
NAD 27 (TARGET BOTTOM HOLE)	NAD 27 (SURFACE LOCATION)
LATITUDE = 40°56'33.04" (40.942511)	LATITUDE = 40°55'01.14" (40.916983)
LONGITUDE = 104°24'53.29" (104.414803)	LONGITUDE = 104°24'58.91" (104.416364)
STATE PLANE NAD 83 (CO. NORTH)	STATE PLANE NAD 83 (CO. NORTH)
N: 1588037.15 E: 3299670.90	N: 1578730.51 E: 3299353.50
STATE PLANE NAD 27 (CO. NORTH)	STATE PLANE NAD 27 (CO. NORTH)
N: 588034.96 E: 2299820.34	N: 578728.51 E: 2299502.89

CERTIFICATE

THIS IS TO CERTIFY THAT THE ABOVE PLAT WAS PREPARED FROM FIELD NOTES OF ACTUAL SURVEYS MADE BY ME OR UNDER MY SUPERVISION AND THAT THE SAME ARE TRUE AND CORRECT TO THE BEST OF MY KNOWLEDGE AND BELIEF.



BASIS OF BEARINGS
BASIS OF BEARINGS IS A G.P.S. OBSERVATION

BASIS OF ELEVATION
SPOT ELEVATION LOCATED AT THE NORTHEAST CORNER OF SECTION 1, T11N, R63W, 6th P.M. TAKEN FROM THE HERFORD, QUADRANGLE, COLORADO, WELD COUNTY, 7.5 MINUTE QUAD (TOPOGRAPHIC MAP) PUBLISHED BY THE UNITED STATES DEPARTMENT OF THE INTERIOR, GEOLOGICAL SURVEY. SAID ELEVATION IS MARKED AS BEING 5352 FEET.



EOG RESOURCES, INC.
CRITTER CREEK #511-1510H
SECTION 15, T11N, R63W, 6th P.M.
SW 1/4 SE 1/4
WELD COUNTY, COLORADO

SURVEYED BY: GREG WEIMER, C.J.	DATE: 04-03-15
DRAWN BY: M.F.D.	DATE DRAWN: 04-06-15
SCALE: 1" = 1000'	REVISED: 00-00-00

WELL LOCATION PLAT



UELS, LLC
Corporate Office * 85 South 200 East
Vernal, UT 84078 * (435) 789-1017