

Crittter Creek 560-1510H

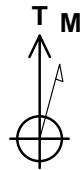
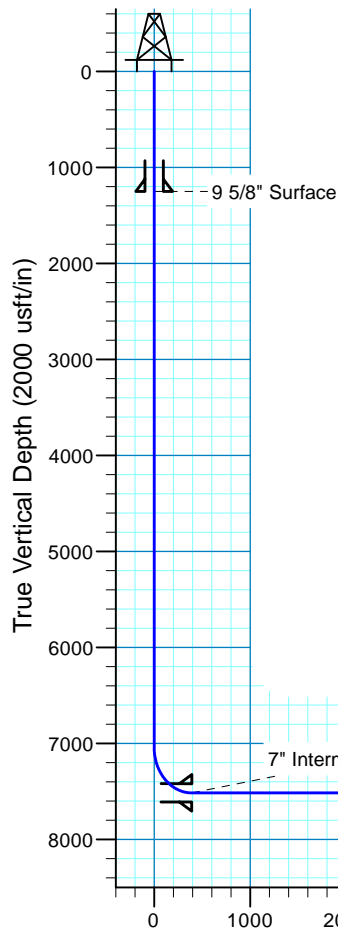
Sec.15-T11N-R63W
Weld County, Colorado

Surface Location

NAD 1927 (NADCON CONUS) Colorado North 501

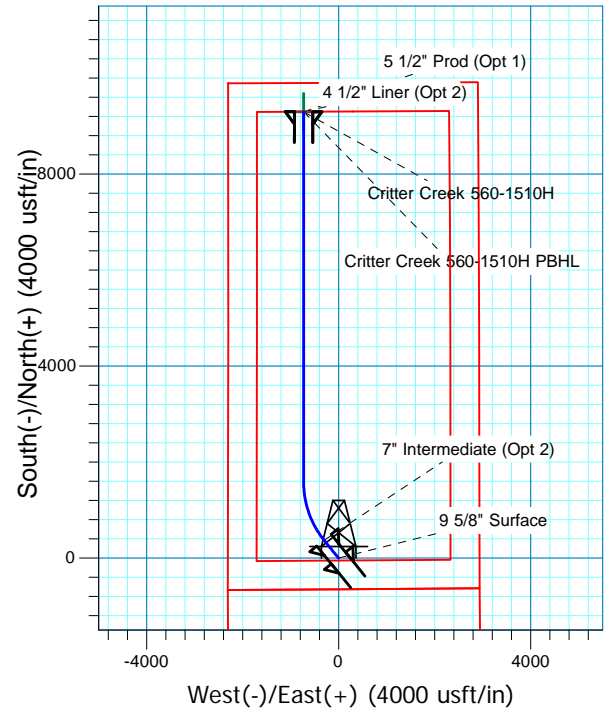
Ground Elevation: 5235.0 WELL @ 5260.0usft (Original Well Elev)

Northing	Easting	Latitude	Longitude
578711.38	2298599.38	40° 55' 1.075 N	104° 25' 10.679 W

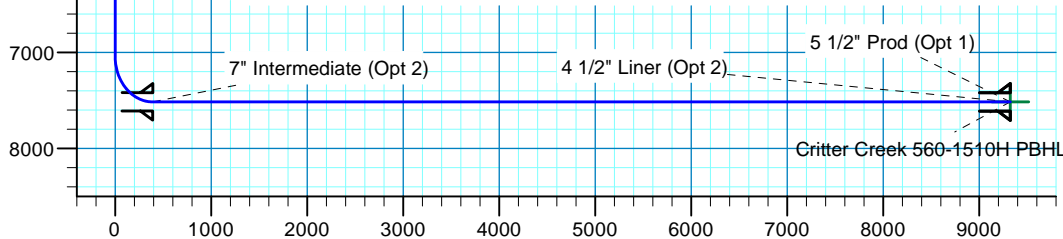


Azimuths to True North
Magnetic North: 8.17°

Magnetic Field
Strength: 53002.5snT
Dip Angle: 67.38°
Date: 7/9/2015
Model: IGRF2010



Project: DJ - Hereford Ranch
Site: Crittter Creek C15 SESW Pad
Well: Crittter Creek 560-1510H
Plan: APD Plan (Plat 4/21/15)



Vertical Section at 355.55° (2000 usft/in)

SECTION DETAILS

Sec	MD	Inc	Azi	TVD	+N/-S	+E/-W	Dleg	TFace	VSec	Target
1	0.0	0.00	0.00	0.0	0.0	0.0	0.00	0.00	0.0	
2	7039.5	0.00	0.00	7039.5	0.0	0.0	0.00	0.00	0.0	
3	7789.5	90.00	321.00	7517.0	371.1	-300.5	12.00	321.00	393.3	
4	9090.0	90.00	0.02	7517.0	1573.5	-726.1	3.00	90.00	1625.1	Crittter Creek 560-1510H PBHL
5	16814.3	90.00	0.02	7517.0	9297.8	-724.0	0.00	0.00	9325.9	Crittter Creek 560-1510H PBHL

TARGET DETAILS

Name	TVD	+N/-S	+E/-W	Northing	Easting	Latitude	Longitude	Shape
Crittter Creek 560-1510H PBHL	7517.0	9297.8	-724.0	587999.63	2297762.13	40° 56' 32.943 N	104° 25' 20.113 W	Point

Denver Division- Colorado

**DJ - Hereford Ranch
Crittter Creek C15 SESW Pad
Crittter Creek 560-1510H**

OK

Plan: APD Plan (Plat 4/21/15)

Standard Survey Report

09 July, 2015

EOG Resources, Inc.

Survey Report

Company:	Denver Division- Colorado	Local Co-ordinate Reference:	Well Critter Creek 560-1510H
Project:	DJ - Hereford Ranch	TVD Reference:	WELL @ 5260.0usft (Original Well Elev)
Site:	Critter Creek C15 SESW Pad	MD Reference:	WELL @ 5260.0usft (Original Well Elev)
Well:	Critter Creek 560-1510H	North Reference:	True
Wellbore:	OK	Survey Calculation Method:	Minimum Curvature
Design:	APD Plan (Plat 4/21/15)	Database:	EDM_DENVER

Project	DJ - Hereford Ranch, Weld County		
Map System:	US State Plane 1927 (Exact solution)	System Datum:	Mean Sea Level
Geo Datum:	NAD 1927 (NADCON CONUS)		
Map Zone:	Colorado North 501		

Site	Critter Creek C15 SESW Pad		
Site Position:		Northing:	578,700.00 usft
From:	Map	Easting:	2,298,700.00 usft
Position Uncertainty:	0.0 usft	Slot Radius:	13-3/16 "
		Latitude:	40° 55' 0.951 N
		Longitude:	104° 25' 9.370 W
		Grid Convergence:	0.70 °

Well	Critter Creek 560-1510H		
Well Position	+N/-S	0.0 usft	Northing:
	+E/-W	0.0 usft	Easting:
Position Uncertainty	0.0 usft	Wellhead Elevation:	0.0 usft
		Latitude:	40° 55' 1.075 N
		Longitude:	104° 25' 10.679 W
		Ground Level:	5,235.0 usft

Wellbore	OK		
Magnetics	Model Name	Sample Date	Declination
			(°)
	IGRF2010	7/9/2015	8.17
			Dip Angle
			(°)
			67.38
			Field Strength
			(nT)
			53,002

Design	APD Plan (Plat 4/21/15)		
Audit Notes:			
Version:	Phase:	PROTOTYPE	Tie On Depth:
			0.0
Vertical Section:	Depth From (TVD)	+N/-S	+E/-W
	(usft)	(usft)	(usft)
	0.0	0.0	0.0
			Direction
			(°)
			355.55

Survey Tool Program	Date	7/9/2015		
From	To	Survey (Wellbore)	Tool Name	Description
(usft)	(usft)			
0.0	16,814.3	APD Plan (Plat 4/21/15) (OK)	MWD	MWD - Standard

Planned Survey									
Measured	Inclination	Azimuth	Vertical	+N/-S	+E/-W	Vertical	Dogleg	Build	Turn
Depth	(°)	(°)	Depth	(usft)	(usft)	Section	Rate	Rate	Rate
(usft)			(usft)			(usft)	(°/100usft)	(°/100usft)	(°/100usft)
0.0	0.00	0.00	0.0	0.0	0.0	0.0	0.00	0.00	0.00
100.0	0.00	0.00	100.0	0.0	0.0	0.0	0.00	0.00	0.00
200.0	0.00	0.00	200.0	0.0	0.0	0.0	0.00	0.00	0.00
300.0	0.00	0.00	300.0	0.0	0.0	0.0	0.00	0.00	0.00
400.0	0.00	0.00	400.0	0.0	0.0	0.0	0.00	0.00	0.00
500.0	0.00	0.00	500.0	0.0	0.0	0.0	0.00	0.00	0.00
600.0	0.00	0.00	600.0	0.0	0.0	0.0	0.00	0.00	0.00
700.0	0.00	0.00	700.0	0.0	0.0	0.0	0.00	0.00	0.00
800.0	0.00	0.00	800.0	0.0	0.0	0.0	0.00	0.00	0.00
900.0	0.00	0.00	900.0	0.0	0.0	0.0	0.00	0.00	0.00

EOG Resources, Inc.

Survey Report

Company:	Denver Division- Colorado	Local Co-ordinate Reference:	Well Critter Creek 560-1510H
Project:	DJ - Hereford Ranch	TVD Reference:	WELL @ 5260.0usft (Original Well Elev)
Site:	Critter Creek C15 SESW Pad	MD Reference:	WELL @ 5260.0usft (Original Well Elev)
Well:	Critter Creek 560-1510H	North Reference:	True
Wellbore:	OK	Survey Calculation Method:	Minimum Curvature
Design:	APD Plan (Plat 4/21/15)	Database:	EDM_DENVER

Planned Survey

Measured Depth (usft)	Inclination (°)	Azimuth (°)	Vertical Depth (usft)	+N/-S (usft)	+E/-W (usft)	Vertical Section (usft)	Dogleg Rate (°/100usft)	Build Rate (°/100usft)	Turn Rate (°/100usft)
1,000.0	0.00	0.00	1,000.0	0.0	0.0	0.0	0.00	0.00	0.00
1,100.0	0.00	0.00	1,100.0	0.0	0.0	0.0	0.00	0.00	0.00
1,200.0	0.00	0.00	1,200.0	0.0	0.0	0.0	0.00	0.00	0.00
1,251.0	0.00	0.00	1,251.0	0.0	0.0	0.0	0.00	0.00	0.00
9 5/8" Surface									
1,300.0	0.00	0.00	1,300.0	0.0	0.0	0.0	0.00	0.00	0.00
1,400.0	0.00	0.00	1,400.0	0.0	0.0	0.0	0.00	0.00	0.00
1,500.0	0.00	0.00	1,500.0	0.0	0.0	0.0	0.00	0.00	0.00
1,600.0	0.00	0.00	1,600.0	0.0	0.0	0.0	0.00	0.00	0.00
1,700.0	0.00	0.00	1,700.0	0.0	0.0	0.0	0.00	0.00	0.00
1,800.0	0.00	0.00	1,800.0	0.0	0.0	0.0	0.00	0.00	0.00
1,900.0	0.00	0.00	1,900.0	0.0	0.0	0.0	0.00	0.00	0.00
2,000.0	0.00	0.00	2,000.0	0.0	0.0	0.0	0.00	0.00	0.00
2,100.0	0.00	0.00	2,100.0	0.0	0.0	0.0	0.00	0.00	0.00
2,200.0	0.00	0.00	2,200.0	0.0	0.0	0.0	0.00	0.00	0.00
2,300.0	0.00	0.00	2,300.0	0.0	0.0	0.0	0.00	0.00	0.00
2,400.0	0.00	0.00	2,400.0	0.0	0.0	0.0	0.00	0.00	0.00
2,500.0	0.00	0.00	2,500.0	0.0	0.0	0.0	0.00	0.00	0.00
2,600.0	0.00	0.00	2,600.0	0.0	0.0	0.0	0.00	0.00	0.00
2,700.0	0.00	0.00	2,700.0	0.0	0.0	0.0	0.00	0.00	0.00
2,800.0	0.00	0.00	2,800.0	0.0	0.0	0.0	0.00	0.00	0.00
2,900.0	0.00	0.00	2,900.0	0.0	0.0	0.0	0.00	0.00	0.00
3,000.0	0.00	0.00	3,000.0	0.0	0.0	0.0	0.00	0.00	0.00
3,100.0	0.00	0.00	3,100.0	0.0	0.0	0.0	0.00	0.00	0.00
3,200.0	0.00	0.00	3,200.0	0.0	0.0	0.0	0.00	0.00	0.00
3,300.0	0.00	0.00	3,300.0	0.0	0.0	0.0	0.00	0.00	0.00
3,400.0	0.00	0.00	3,400.0	0.0	0.0	0.0	0.00	0.00	0.00
3,500.0	0.00	0.00	3,500.0	0.0	0.0	0.0	0.00	0.00	0.00
3,600.0	0.00	0.00	3,600.0	0.0	0.0	0.0	0.00	0.00	0.00
3,700.0	0.00	0.00	3,700.0	0.0	0.0	0.0	0.00	0.00	0.00
3,800.0	0.00	0.00	3,800.0	0.0	0.0	0.0	0.00	0.00	0.00
3,900.0	0.00	0.00	3,900.0	0.0	0.0	0.0	0.00	0.00	0.00
4,000.0	0.00	0.00	4,000.0	0.0	0.0	0.0	0.00	0.00	0.00
4,100.0	0.00	0.00	4,100.0	0.0	0.0	0.0	0.00	0.00	0.00
4,200.0	0.00	0.00	4,200.0	0.0	0.0	0.0	0.00	0.00	0.00
4,300.0	0.00	0.00	4,300.0	0.0	0.0	0.0	0.00	0.00	0.00
4,400.0	0.00	0.00	4,400.0	0.0	0.0	0.0	0.00	0.00	0.00
4,500.0	0.00	0.00	4,500.0	0.0	0.0	0.0	0.00	0.00	0.00
4,600.0	0.00	0.00	4,600.0	0.0	0.0	0.0	0.00	0.00	0.00
4,700.0	0.00	0.00	4,700.0	0.0	0.0	0.0	0.00	0.00	0.00
4,800.0	0.00	0.00	4,800.0	0.0	0.0	0.0	0.00	0.00	0.00
4,900.0	0.00	0.00	4,900.0	0.0	0.0	0.0	0.00	0.00	0.00
5,000.0	0.00	0.00	5,000.0	0.0	0.0	0.0	0.00	0.00	0.00
5,100.0	0.00	0.00	5,100.0	0.0	0.0	0.0	0.00	0.00	0.00

EOG Resources, Inc.

Survey Report

Company:	Denver Division- Colorado	Local Co-ordinate Reference:	Well Critter Creek 560-1510H
Project:	DJ - Hereford Ranch	TVD Reference:	WELL @ 5260.0usft (Original Well Elev)
Site:	Critter Creek C15 SESW Pad	MD Reference:	WELL @ 5260.0usft (Original Well Elev)
Well:	Critter Creek 560-1510H	North Reference:	True
Wellbore:	OK	Survey Calculation Method:	Minimum Curvature
Design:	APD Plan (Plat 4/21/15)	Database:	EDM_DENVER

Planned Survey

Measured Depth (usft)	Inclination (°)	Azimuth (°)	Vertical Depth (usft)	+N/-S (usft)	+E/-W (usft)	Vertical Section (usft)	Dogleg Rate (°/100usft)	Build Rate (°/100usft)	Turn Rate (°/100usft)
5,200.0	0.00	0.00	5,200.0	0.0	0.0	0.0	0.00	0.00	0.00
5,300.0	0.00	0.00	5,300.0	0.0	0.0	0.0	0.00	0.00	0.00
5,400.0	0.00	0.00	5,400.0	0.0	0.0	0.0	0.00	0.00	0.00
5,500.0	0.00	0.00	5,500.0	0.0	0.0	0.0	0.00	0.00	0.00
5,600.0	0.00	0.00	5,600.0	0.0	0.0	0.0	0.00	0.00	0.00
5,700.0	0.00	0.00	5,700.0	0.0	0.0	0.0	0.00	0.00	0.00
5,800.0	0.00	0.00	5,800.0	0.0	0.0	0.0	0.00	0.00	0.00
5,900.0	0.00	0.00	5,900.0	0.0	0.0	0.0	0.00	0.00	0.00
6,000.0	0.00	0.00	6,000.0	0.0	0.0	0.0	0.00	0.00	0.00
6,100.0	0.00	0.00	6,100.0	0.0	0.0	0.0	0.00	0.00	0.00
6,200.0	0.00	0.00	6,200.0	0.0	0.0	0.0	0.00	0.00	0.00
6,300.0	0.00	0.00	6,300.0	0.0	0.0	0.0	0.00	0.00	0.00
6,400.0	0.00	0.00	6,400.0	0.0	0.0	0.0	0.00	0.00	0.00
6,500.0	0.00	0.00	6,500.0	0.0	0.0	0.0	0.00	0.00	0.00
6,600.0	0.00	0.00	6,600.0	0.0	0.0	0.0	0.00	0.00	0.00
6,700.0	0.00	0.00	6,700.0	0.0	0.0	0.0	0.00	0.00	0.00
6,800.0	0.00	0.00	6,800.0	0.0	0.0	0.0	0.00	0.00	0.00
6,900.0	0.00	0.00	6,900.0	0.0	0.0	0.0	0.00	0.00	0.00
7,000.0	0.00	0.00	7,000.0	0.0	0.0	0.0	0.00	0.00	0.00
7,039.5	0.00	0.00	7,039.5	0.0	0.0	0.0	0.00	0.00	0.00
7,100.0	7.26	321.00	7,099.8	3.0	-2.4	3.2	12.00	12.00	0.00
7,200.0	19.26	321.00	7,197.0	20.8	-16.8	22.0	12.00	12.00	0.00
7,300.0	31.26	321.00	7,287.3	53.9	-43.6	57.1	12.00	12.00	0.00
7,400.0	43.26	321.00	7,366.7	100.8	-81.7	106.9	12.00	12.00	0.00
7,500.0	55.26	321.00	7,431.9	159.6	-129.2	169.2	12.00	12.00	0.00
7,600.0	67.26	321.00	7,479.9	227.6	-184.3	241.3	12.00	12.00	0.00
7,700.0	79.26	321.00	7,508.6	301.9	-244.5	320.0	12.00	12.00	0.00
7,789.0	89.94	321.00	7,517.0	370.7	-300.2	392.9	12.00	12.00	0.00
7" Intermediate (Opt 2)									
7,789.5	90.00	321.00	7,517.0	371.1	-300.5	393.3	12.00	12.00	0.00
7,800.0	90.00	321.32	7,517.0	379.2	-307.1	401.9	3.00	0.00	3.00
7,900.0	90.00	324.32	7,517.0	458.9	-367.5	486.0	3.00	0.00	3.00
8,000.0	90.00	327.32	7,517.0	541.6	-423.7	572.9	3.00	0.00	3.00
8,100.0	90.00	330.32	7,517.0	627.2	-475.5	662.2	3.00	0.00	3.00
8,200.0	90.00	333.32	7,517.0	715.3	-522.7	753.7	3.00	0.00	3.00
8,300.0	90.00	336.32	7,517.0	805.8	-565.2	847.2	3.00	0.00	3.00
8,400.0	90.00	339.32	7,517.0	898.4	-603.0	942.5	3.00	0.00	3.00
8,500.0	90.00	342.32	7,517.0	992.8	-635.8	1,039.2	3.00	0.00	3.00
8,600.0	90.00	345.32	7,517.0	1,088.8	-663.7	1,137.1	3.00	0.00	3.00
8,700.0	90.00	348.32	7,517.0	1,186.2	-686.5	1,235.9	3.00	0.00	3.00
8,800.0	90.00	351.32	7,517.0	1,284.6	-704.2	1,335.4	3.00	0.00	3.00
8,900.0	90.00	354.32	7,517.0	1,383.8	-716.7	1,435.2	3.00	0.00	3.00
9,000.0	90.00	357.32	7,517.0	1,483.5	-724.0	1,535.2	3.00	0.00	3.00

EOG Resources, Inc.

Survey Report

Company:	Denver Division- Colorado	Local Co-ordinate Reference:	Well Critter Creek 560-1510H
Project:	DJ - Hereford Ranch	TVD Reference:	WELL @ 5260.0usft (Original Well Elev)
Site:	Critter Creek C15 SESW Pad	MD Reference:	WELL @ 5260.0usft (Original Well Elev)
Well:	Critter Creek 560-1510H	North Reference:	True
Wellbore:	OK	Survey Calculation Method:	Minimum Curvature
Design:	APD Plan (Plat 4/21/15)	Database:	EDM_DENVER

Planned Survey

Measured Depth (usft)	Inclination (°)	Azimuth (°)	Vertical Depth (usft)	+N/-S (usft)	+E/-W (usft)	Vertical Section (usft)	Dogleg Rate (°/100usft)	Build Rate (°/100usft)	Turn Rate (°/100usft)
9,090.0	90.00	0.02	7,517.0	1,573.5	-726.1	1,625.1	3.00	0.00	3.00
9,100.0	90.00	0.02	7,517.0	1,583.5	-726.1	1,635.1	0.00	0.00	0.00
9,200.0	90.00	0.02	7,517.0	1,683.5	-726.1	1,734.8	0.00	0.00	0.00
9,300.0	90.00	0.02	7,517.0	1,783.5	-726.0	1,834.5	0.00	0.00	0.00
9,400.0	90.00	0.02	7,517.0	1,883.5	-726.0	1,934.2	0.00	0.00	0.00
9,500.0	90.00	0.02	7,517.0	1,983.5	-726.0	2,033.8	0.00	0.00	0.00
9,600.0	90.00	0.02	7,517.0	2,083.5	-726.0	2,133.5	0.00	0.00	0.00
9,700.0	90.00	0.02	7,517.0	2,183.5	-725.9	2,233.2	0.00	0.00	0.00
9,800.0	90.00	0.02	7,517.0	2,283.5	-725.9	2,332.9	0.00	0.00	0.00
9,900.0	90.00	0.02	7,517.0	2,383.5	-725.9	2,432.6	0.00	0.00	0.00
10,000.0	90.00	0.02	7,517.0	2,483.5	-725.9	2,532.3	0.00	0.00	0.00
10,100.0	90.00	0.02	7,517.0	2,583.5	-725.8	2,632.0	0.00	0.00	0.00
10,200.0	90.00	0.02	7,517.0	2,683.5	-725.8	2,731.7	0.00	0.00	0.00
10,300.0	90.00	0.02	7,517.0	2,783.5	-725.8	2,831.4	0.00	0.00	0.00
10,400.0	90.00	0.02	7,517.0	2,883.5	-725.7	2,931.1	0.00	0.00	0.00
10,500.0	90.00	0.02	7,517.0	2,983.5	-725.7	3,030.8	0.00	0.00	0.00
10,600.0	90.00	0.02	7,517.0	3,083.5	-725.7	3,130.5	0.00	0.00	0.00
10,700.0	90.00	0.02	7,517.0	3,183.5	-725.7	3,230.2	0.00	0.00	0.00
10,800.0	90.00	0.02	7,517.0	3,283.5	-725.6	3,329.9	0.00	0.00	0.00
10,900.0	90.00	0.02	7,517.0	3,383.5	-725.6	3,429.6	0.00	0.00	0.00
11,000.0	90.00	0.02	7,517.0	3,483.5	-725.6	3,529.3	0.00	0.00	0.00
11,100.0	90.00	0.02	7,517.0	3,583.5	-725.6	3,629.0	0.00	0.00	0.00
11,200.0	90.00	0.02	7,517.0	3,683.5	-725.5	3,728.7	0.00	0.00	0.00
11,300.0	90.00	0.02	7,517.0	3,783.5	-725.5	3,828.4	0.00	0.00	0.00
11,400.0	90.00	0.02	7,517.0	3,883.5	-725.5	3,928.1	0.00	0.00	0.00
11,500.0	90.00	0.02	7,517.0	3,983.5	-725.5	4,027.8	0.00	0.00	0.00
11,600.0	90.00	0.02	7,517.0	4,083.5	-725.4	4,127.5	0.00	0.00	0.00
11,700.0	90.00	0.02	7,517.0	4,183.5	-725.4	4,227.2	0.00	0.00	0.00
11,800.0	90.00	0.02	7,517.0	4,283.5	-725.4	4,326.9	0.00	0.00	0.00
11,900.0	90.00	0.02	7,517.0	4,383.5	-725.3	4,426.6	0.00	0.00	0.00
12,000.0	90.00	0.02	7,517.0	4,483.5	-725.3	4,526.3	0.00	0.00	0.00
12,100.0	90.00	0.02	7,517.0	4,583.5	-725.3	4,625.9	0.00	0.00	0.00
12,200.0	90.00	0.02	7,517.0	4,683.5	-725.3	4,725.6	0.00	0.00	0.00
12,300.0	90.00	0.02	7,517.0	4,783.5	-725.2	4,825.3	0.00	0.00	0.00
12,400.0	90.00	0.02	7,517.0	4,883.5	-725.2	4,925.0	0.00	0.00	0.00
12,500.0	90.00	0.02	7,517.0	4,983.5	-725.2	5,024.7	0.00	0.00	0.00
12,600.0	90.00	0.02	7,517.0	5,083.5	-725.2	5,124.4	0.00	0.00	0.00
12,700.0	90.00	0.02	7,517.0	5,183.5	-725.1	5,224.1	0.00	0.00	0.00
12,800.0	90.00	0.02	7,517.0	5,283.5	-725.1	5,323.8	0.00	0.00	0.00
12,900.0	90.00	0.02	7,517.0	5,383.5	-725.1	5,423.5	0.00	0.00	0.00
13,000.0	90.00	0.02	7,517.0	5,483.5	-725.1	5,523.2	0.00	0.00	0.00
13,100.0	90.00	0.02	7,517.0	5,583.5	-725.0	5,622.9	0.00	0.00	0.00
13,200.0	90.00	0.02	7,517.0	5,683.5	-725.0	5,722.6	0.00	0.00	0.00
13,300.0	90.00	0.02	7,517.0	5,783.5	-725.0	5,822.3	0.00	0.00	0.00

EOG Resources, Inc.

Survey Report

Company:	Denver Division- Colorado	Local Co-ordinate Reference:	Well Critter Creek 560-1510H
Project:	DJ - Hereford Ranch	TVD Reference:	WELL @ 5260.0usft (Original Well Elev)
Site:	Critter Creek C15 SESW Pad	MD Reference:	WELL @ 5260.0usft (Original Well Elev)
Well:	Critter Creek 560-1510H	North Reference:	True
Wellbore:	OK	Survey Calculation Method:	Minimum Curvature
Design:	APD Plan (Plat 4/21/15)	Database:	EDM_DENVER

Planned Survey

Measured Depth (usft)	Inclination (°)	Azimuth (°)	Vertical Depth (usft)	+N/-S (usft)	+E/-W (usft)	Vertical Section (usft)	Dogleg Rate (°/100usft)	Build Rate (°/100usft)	Turn Rate (°/100usft)
13,400.0	90.00	0.02	7,517.0	5,883.5	-724.9	5,922.0	0.00	0.00	0.00
13,500.0	90.00	0.02	7,517.0	5,983.5	-724.9	6,021.7	0.00	0.00	0.00
13,600.0	90.00	0.02	7,517.0	6,083.5	-724.9	6,121.4	0.00	0.00	0.00
13,700.0	90.00	0.02	7,517.0	6,183.5	-724.9	6,221.1	0.00	0.00	0.00
13,800.0	90.00	0.02	7,517.0	6,283.5	-724.8	6,320.8	0.00	0.00	0.00
13,900.0	90.00	0.02	7,517.0	6,383.5	-724.8	6,420.5	0.00	0.00	0.00
14,000.0	90.00	0.02	7,517.0	6,483.5	-724.8	6,520.2	0.00	0.00	0.00
14,100.0	90.00	0.02	7,517.0	6,583.5	-724.8	6,619.9	0.00	0.00	0.00
14,200.0	90.00	0.02	7,517.0	6,683.5	-724.7	6,719.6	0.00	0.00	0.00
14,300.0	90.00	0.02	7,517.0	6,783.5	-724.7	6,819.3	0.00	0.00	0.00
14,400.0	90.00	0.02	7,517.0	6,883.5	-724.7	6,919.0	0.00	0.00	0.00
14,500.0	90.00	0.02	7,517.0	6,983.5	-724.6	7,018.7	0.00	0.00	0.00
14,600.0	90.00	0.02	7,517.0	7,083.5	-724.6	7,118.4	0.00	0.00	0.00
14,700.0	90.00	0.02	7,517.0	7,183.5	-724.6	7,218.0	0.00	0.00	0.00
14,800.0	90.00	0.02	7,517.0	7,283.5	-724.6	7,317.7	0.00	0.00	0.00
14,900.0	90.00	0.02	7,517.0	7,383.5	-724.5	7,417.4	0.00	0.00	0.00
15,000.0	90.00	0.02	7,517.0	7,483.5	-724.5	7,517.1	0.00	0.00	0.00
15,100.0	90.00	0.02	7,517.0	7,583.5	-724.5	7,616.8	0.00	0.00	0.00
15,200.0	90.00	0.02	7,517.0	7,683.5	-724.5	7,716.5	0.00	0.00	0.00
15,300.0	90.00	0.02	7,517.0	7,783.5	-724.4	7,816.2	0.00	0.00	0.00
15,400.0	90.00	0.02	7,517.0	7,883.5	-724.4	7,915.9	0.00	0.00	0.00
15,500.0	90.00	0.02	7,517.0	7,983.5	-724.4	8,015.6	0.00	0.00	0.00
15,600.0	90.00	0.02	7,517.0	8,083.5	-724.4	8,115.3	0.00	0.00	0.00
15,700.0	90.00	0.02	7,517.0	8,183.5	-724.3	8,215.0	0.00	0.00	0.00
15,800.0	90.00	0.02	7,517.0	8,283.5	-724.3	8,314.7	0.00	0.00	0.00
15,900.0	90.00	0.02	7,517.0	8,383.5	-724.3	8,414.4	0.00	0.00	0.00
16,000.0	90.00	0.02	7,517.0	8,483.5	-724.2	8,514.1	0.00	0.00	0.00
16,100.0	90.00	0.02	7,517.0	8,583.5	-724.2	8,613.8	0.00	0.00	0.00
16,200.0	90.00	0.02	7,517.0	8,683.5	-724.2	8,713.5	0.00	0.00	0.00
16,300.0	90.00	0.02	7,517.0	8,783.5	-724.2	8,813.2	0.00	0.00	0.00
16,400.0	90.00	0.02	7,517.0	8,883.5	-724.1	8,912.9	0.00	0.00	0.00
16,500.0	90.00	0.02	7,517.0	8,983.5	-724.1	9,012.6	0.00	0.00	0.00
16,600.0	90.00	0.02	7,517.0	9,083.5	-724.1	9,112.3	0.00	0.00	0.00
16,700.0	90.00	0.02	7,517.0	9,183.5	-724.1	9,212.0	0.00	0.00	0.00
16,800.0	90.00	0.02	7,517.0	9,283.5	-724.0	9,311.7	0.00	0.00	0.00
16,814.0	90.00	0.02	7,517.0	9,297.5	-724.0	9,325.6	0.00	0.00	0.00
5 1/2" Prod (Opt 1) - 4 1/2" Liner (Opt 2)									
16,814.3	90.00	0.02	7,517.0	9,297.8	-724.0	9,325.9	0.00	0.00	0.00
Critter Creek 560-1510H PBHL									

EOG Resources, Inc.

Survey Report

Company:	Denver Division- Colorado	Local Co-ordinate Reference:	Well Critter Creek 560-1510H
Project:	DJ - Hereford Ranch	TVD Reference:	WELL @ 5260.0usft (Original Well Elev)
Site:	Critter Creek C15 SESW Pad	MD Reference:	WELL @ 5260.0usft (Original Well Elev)
Well:	Critter Creek 560-1510H	North Reference:	True
Wellbore:	OK	Survey Calculation Method:	Minimum Curvature
Design:	APD Plan (Plat 4/21/15)	Database:	EDM_DENVER

Design Targets

Target Name - hit/miss target - Shape	Dip Angle (°)	Dip Dir. (°)	TVD (usft)	+N/-S (usft)	+E/-W (usft)	Northing (usft)	Easting (usft)	Latitude	Longitude
Critter Creek 560-1510H - plan hits target center - Point	0.00	0.00	7,517.0	9,297.8	-724.0	587,999.63	2,297,762.13	40° 56' 32.943 N	104° 25' 20.113 W

Casing Points

Measured Depth (usft)	Vertical Depth (usft)	Name	Casing Diameter (")	Hole Diameter (")
1,251.0	1,251.0	9 5/8" Surface	9-5/8	13-1/2
7,789.0	7,517.0	7" Intermediate (Opt 2)	7	8-3/4
16,814.0	7,517.0	5 1/2" Prod (Opt 1)	5-1/2	8-3/4
16,814.0	7,517.0	4 1/2" Liner (Opt 2)	4-1/2	6-1/8

Checked By: _____ Approved By: _____ Date: _____