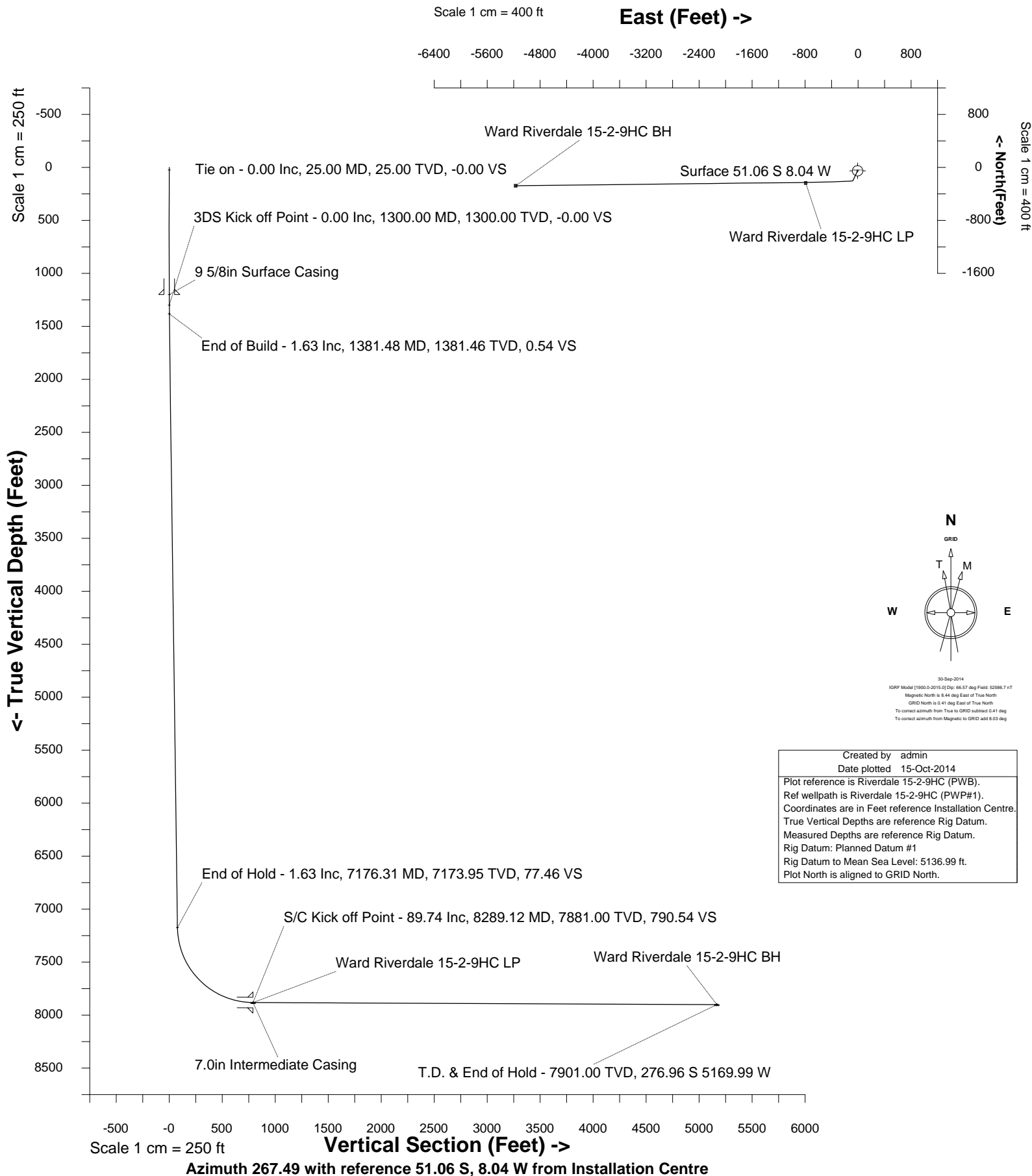




WARD PETROLEUM

Location	ADAMS COUNTY, CO	Slot	Slot #14
Field	West Brighton	Well	Riverdale 15-2-9HC
Installation	Riverdale	Wellbore	Riverdale 15-2-9HC (PWB)





WARD PETROLEUM

INTEGRATED PETROLEUM TECHNOLOGIES, INC
SYSDRILL
Well Design Combined Report
Wellbore: Riverdale 15-2-9HC (PWB)



Wellhead Details

Name	Northing	Easting	Latitude	Longitude	North	East	Elevation Above Inst.
Slot #14	1230003.8676	3178199.9726	39.96299000	-104.86426000	51.06S	8.04W	0.83

Declination

Date	Source	Time
30-Sep-2014	IGRF Model [1900.0-2015.0]	10:30

Site Details

Name	Northing	Easting	Coord System Name	North Alignment
Riverdale	1230054.9248	3178208.0159	CO83-NF on NORTH AMERICAN DATUM 1983 datum	Grid

Summary Wellpath

MD[ft]	Inc[deg]	Azi[deg]	TVD[ft]	North[ft]	East[ft]	Dogleg [deg/100ft]	Vertical Section[ft]	Northing	Easting
25.00	0.00	0.000	25.00	0.00N	0.00E		0.00	1230003.87	3178199.97
1300.00	0.00	205.320	1300.00	0.00N	0.00E	==>	0.00	1230003.87	3178199.97
12667.81	89.74	269.350	7901.00	225.90S	5161.95W	==>	5166.89	1229777.97	3173038.19

Interpolated Wellpath

MD[ft]	Inc[deg]	Azi[deg]	TVD[ft]	North[ft]	East[ft]	Dogleg [deg/100ft]	Vertical Section[ft]	Northing	Easting
0.00	0.00	0.000	0.00	0.00N	0.00E		0.00	1230003.87	3178199.97
25.00	0.00	0.000	25.00	0.00N	0.00E	==>	0.00	1230003.87	3178199.97
100.00	0.00	0.000	100.00	0.00N	0.00E	==>	0.00	1230003.87	3178199.97
200.00	0.00	0.000	200.00	0.00N	0.00E	==>	0.00	1230003.87	3178199.97
300.00	0.00	0.000	300.00	0.00N	0.00E	==>	0.00	1230003.87	3178199.97
400.00	0.00	0.000	400.00	0.00N	0.00E	==>	0.00	1230003.87	3178199.97
500.00	0.00	0.000	500.00	0.00N	0.00E	==>	0.00	1230003.87	3178199.97
600.00	0.00	0.000	600.00	0.00N	0.00E	==>	0.00	1230003.87	3178199.97
700.00	0.00	0.000	700.00	0.00N	0.00E	==>	0.00	1230003.87	3178199.97
800.00	0.00	0.000	800.00	0.00N	0.00E	==>	0.00	1230003.87	3178199.97
900.00	0.00	0.000	900.00	0.00N	0.00E	==>	0.00	1230003.87	3178199.97
1000.00	0.00	0.000	1000.00	0.00N	0.00E	==>	0.00	1230003.87	3178199.97
1100.00	0.00	0.000	1100.00	0.00N	0.00E	==>	0.00	1230003.87	3178199.97
1200.00	0.00	0.000	1200.00	0.00N	0.00E	==>	0.00	1230003.87	3178199.97
1275.00	0.00	0.000	1275.00	0.00N	0.00E	==>	0.00	1230003.87	3178199.97
1300.00	0.00	205.320	1300.00	0.00N	0.00E	==>	0.00	1230003.87	3178199.97
1375.00	1.50	205.320	1374.99	0.89S	0.42W	2.00	0.46	1230002.98	3178199.55
1400.00	1.63	205.320	1399.98	1.52S	0.72W	==>	0.79	1230002.34	3178199.25
1500.00	1.63	205.320	1499.94	4.09S	1.94W	==>	2.11	1229999.77	3178198.04
1600.00	1.63	205.320	1599.90	6.66S	3.15W	==>	3.44	1229997.20	3178196.82
1700.00	1.63	205.320	1699.86	9.23S	4.37W	==>	4.77	1229994.63	3178195.60
1800.00	1.63	205.320	1799.82	11.81S	5.59W	==>	6.10	1229992.06	3178194.39
1900.00	1.63	205.320	1899.78	14.38S	6.80W	==>	7.42	1229989.49	3178193.17
2000.00	1.63	205.320	1999.74	16.95S	8.02W	==>	8.75	1229986.92	3178191.96
2100.00	1.63	205.320	2099.70	19.52S	9.23W	==>	10.08	1229984.35	3178190.74
2200.00	1.63	205.320	2199.66	22.09S	10.45W	==>	11.41	1229981.78	3178189.52
2300.00	1.63	205.320	2299.62	24.66S	11.67W	==>	12.73	1229979.21	3178188.31
2400.00	1.63	205.320	2399.58	27.23S	12.88W	==>	14.06	1229976.64	3178187.09
2500.00	1.63	205.320	2499.54	29.80S	14.10W	==>	15.39	1229974.07	3178185.88
2600.00	1.63	205.320	2599.50	32.37S	15.31W	==>	16.71	1229971.50	3178184.66
2700.00	1.63	205.320	2699.46	34.94S	16.53W	==>	18.04	1229968.93	3178183.44
2800.00	1.63	205.320	2799.42	37.51S	17.75W	==>	19.37	1229966.36	3178182.23
2900.00	1.63	205.320	2899.37	40.08S	18.96W	==>	20.70	1229963.79	3178181.01
3000.00	1.63	205.320	2999.33	42.65S	20.18W	==>	22.02	1229961.22	3178179.79
3100.00	1.63	205.320	3099.29	45.22S	21.39W	==>	23.35	1229958.65	3178178.58
3200.00	1.63	205.320	3199.25	47.79S	22.61W	==>	24.68	1229956.08	3178177.36
3300.00	1.63	205.320	3299.21	50.36S	23.83W	==>	26.01	1229953.51	3178176.15
3400.00	1.63	205.320	3399.17	52.93S	25.04W	==>	27.33	1229950.94	3178174.93
3500.00	1.63	205.320	3499.13	55.50S	26.26W	==>	28.66	1229948.37	3178173.71

All data is in Feet unless otherwise stated
Coordinates are from Slot MD's are from Rig (Planned Datum #1 5137.0ft above Mean Sea Level)
Vertical Section is from 0.00N 0.00E on azimuth 267.490 degrees
Bottom hole distance is 5166.89 Feet on azimuth 267.49 degrees from Wellhead
Calculation method uses Minimum Curvature method
Prepared by Integrated Petroleum Technologies, Inc.
Date Printed: 15-Oct-2014



WARD PETROLEUM

INTEGRATED PETROLEUM TECHNOLOGIES, INC SYSDRILL

Well Design Combined Report
Wellbore: Riverdale 15-2-9HC (PWB)



Interpolated Wellpath									
MD[ft]	Inc[deg]	Azi[deg]	TVD[ft]	North[ft]	East[ft]	Dogleg [deg/100ft]	Vertical Section[ft]	Northing	Easting
3600.00	1.63	205.320	3599.09	58.07S	27.47W	==>	29.99	1229945.80	3178172.50
3700.00	1.63	205.320	3699.05	60.64S	28.69W	==>	31.32	1229943.22	3178171.28
3800.00	1.63	205.320	3799.01	63.22S	29.91W	==>	32.64	1229940.65	3178170.07
3900.00	1.63	205.320	3898.97	65.79S	31.12W	==>	33.97	1229938.08	3178168.85
4000.00	1.63	205.320	3998.93	68.36S	32.34W	==>	35.30	1229935.51	3178167.63
4100.00	1.63	205.320	4098.89	70.93S	33.56W	==>	36.62	1229932.94	3178166.42
4200.00	1.63	205.320	4198.85	73.50S	34.77W	==>	37.95	1229930.37	3178165.20
4300.00	1.63	205.320	4298.81	76.07S	35.99W	==>	39.28	1229927.80	3178163.99
4400.00	1.63	205.320	4398.77	78.64S	37.20W	==>	40.61	1229925.23	3178162.77
4500.00	1.63	205.320	4498.73	81.21S	38.42W	==>	41.93	1229922.66	3178161.55
4600.00	1.63	205.320	4598.69	83.78S	39.64W	==>	43.26	1229920.09	3178160.34
4700.00	1.63	205.320	4698.65	86.35S	40.85W	==>	44.59	1229917.52	3178159.12
4800.00	1.63	205.320	4798.61	88.92S	42.07W	==>	45.92	1229914.95	3178157.91
4900.00	1.63	205.320	4898.57	91.49S	43.28W	==>	47.24	1229912.38	3178156.69
5000.00	1.63	205.320	4998.53	94.06S	44.50W	==>	48.57	1229909.81	3178155.47
5100.00	1.63	205.320	5098.49	96.63S	45.72W	==>	49.90	1229907.24	3178154.26
5200.00	1.63	205.320	5198.44	99.20S	46.93W	==>	51.22	1229904.67	3178153.04
5300.00	1.63	205.320	5298.40	101.77S	48.15W	==>	52.55	1229902.10	3178151.83
5400.00	1.63	205.320	5398.36	104.34S	49.36W	==>	53.88	1229899.53	3178150.61
5500.00	1.63	205.320	5498.32	106.91S	50.58W	==>	55.21	1229896.96	3178149.39
5600.00	1.63	205.320	5598.28	109.48S	51.80W	==>	56.53	1229894.39	3178148.18
5700.00	1.63	205.320	5698.24	112.05S	53.01W	==>	57.86	1229891.82	3178146.96
5800.00	1.63	205.320	5798.20	114.63S	54.23W	==>	59.19	1229889.25	3178145.75
5900.00	1.63	205.320	5898.16	117.20S	55.45W	==>	60.52	1229886.68	3178144.53
6000.00	1.63	205.320	5998.12	119.77S	56.66W	==>	61.84	1229884.11	3178143.31
6100.00	1.63	205.320	6098.08	122.34S	57.88W	==>	63.17	1229881.54	3178142.10
6200.00	1.63	205.320	6198.04	124.91S	59.09W	==>	64.50	1229878.96	3178140.88
6300.00	1.63	205.320	6298.00	127.48S	60.31W	==>	65.83	1229876.39	3178139.66
6400.00	1.63	205.320	6397.96	130.05S	61.53W	==>	67.15	1229873.82	3178138.45
6500.00	1.63	205.320	6497.92	132.62S	62.74W	==>	68.48	1229871.25	3178137.23
6600.00	1.63	205.320	6597.88	135.19S	63.96W	==>	69.81	1229868.68	3178136.02
6700.00	1.63	205.320	6697.84	137.76S	65.17W	==>	71.13	1229866.11	3178134.80
6800.00	1.63	205.320	6797.80	140.33S	66.39W	==>	72.46	1229863.54	3178133.58
6900.00	1.63	205.320	6897.76	142.90S	67.61W	==>	73.79	1229860.97	3178132.37
7000.00	1.63	205.320	6997.72	145.47S	68.82W	==>	75.12	1229858.40	3178131.15
7100.00	1.63	205.320	7097.68	148.04S	70.04W	==>	76.44	1229855.83	3178129.94
7200.00	2.99	240.050	7197.63	150.62S	71.65W	8.00	78.16	1229853.26	3178128.33
7300.00	10.71	261.580	7296.85	153.28S	83.12W	8.00	89.74	1229850.59	3178116.86
7400.00	18.66	265.010	7393.51	156.04S	108.29W	8.00	115.01	1229847.83	3178091.69
7500.00	26.65	266.430	7485.72	158.83S	146.67W	8.00	153.48	1229845.04	3178053.31
7600.00	34.64	267.230	7571.68	161.60S	197.52W	8.00	204.40	1229842.27	3178002.46
7700.00	42.63	267.760	7649.74	164.30S	259.84W	8.00	266.78	1229839.57	3177940.14
7800.00	50.62	268.150	7718.36	166.87S	332.43W	8.00	339.40	1229837.00	3177867.56
7900.00	58.62	268.460	7776.21	169.27S	413.86W	8.00	420.86	1229834.61	3177786.13
8000.00	66.62	268.720	7822.16	171.44S	502.56W	8.00	509.57	1229832.43	3177697.43
8100.00	74.61	268.950	7855.33	173.35S	596.79W	8.00	603.80	1229830.52	3177603.20
8200.00	82.61	269.170	7875.06	174.96S	694.73W	8.00	701.72	1229828.92	3177505.26
8300.00	89.74	269.350	7881.05	176.23S	794.47W	==>	801.41	1229827.64	3177405.53
8400.00	89.74	269.350	7881.50	177.37S	894.46W	==>	901.36	1229826.50	3177305.54
8500.00	89.74	269.350	7881.96	178.51S	994.45W	==>	1001.30	1229825.37	3177205.55
8600.00	89.74	269.350	7882.42	179.64S	1094.44W	==>	1101.25	1229824.23	3177105.56
8700.00	89.74	269.350	7882.87	180.78S	1194.44W	==>	1201.20	1229823.09	3177005.58
8800.00	89.74	269.350	7883.33	181.92S	1294.43W	==>	1301.14	1229821.95	3176905.59
8900.00	89.74	269.350	7883.79	183.06S	1394.42W	==>	1401.09	1229820.82	3176805.60
9000.00	89.74	269.350	7884.24	184.19S	1494.41W	==>	1501.04	1229819.68	3176705.61
9100.00	89.74	269.350	7884.70	185.33S	1594.41W	==>	1600.98	1229818.54	3176605.62
9200.00	89.74	269.350	7885.16	186.47S	1694.40W	==>	1700.93	1229817.41	3176505.63
9300.00	89.74	269.350	7885.61	187.61S	1794.39W	==>	1800.88	1229816.27	3176405.64
9400.00	89.74	269.350	7886.07	188.74S	1894.38W	==>	1900.82	1229815.13	3176305.65
9500.00	89.74	269.350	7886.53	189.88S	1994.38W	==>	2000.77	1229813.99	3176205.66

All data is in Feet unless otherwise stated
Coordinates are from Slot MD's are from Rig and TVD's are from Rig (Planned Datum #1 5137.0ft above Mean Sea Level)
Vertical Section is from 0.00N 0.00E on azimuth 267.490 degrees
Bottom hole distance is 5166.89 Feet on azimuth 267.49 degrees from Wellhead
Calculation method uses Minimum Curvature method
Prepared by Integrated Petroleum Technologies, Inc.
Date Printed: 15-Oct-2014



WARD PETROLEUM

INTEGRATED PETROLEUM TECHNOLOGIES, INC
SYSDRILL
Well Design Combined Report
Wellbore: Riverdale 15-2-9HC (PWB)



Interpolated Wellpath									
MD[ft]	Inc[deg]	Azi[deg]	TVD[ft]	North[ft]	East[ft]	Dogleg [deg/100ft]	Vertical Section[ft]	Northing	Easting
9600.00	89.74	269.350	7886.98	191.02S	2094.37W	==>	2100.72	1229812.86	3176105.67
9700.00	89.74	269.350	7887.44	192.15S	2194.36W	==>	2200.66	1229811.72	3176005.68
9800.00	89.74	269.350	7887.90	193.29S	2294.35W	==>	2300.61	1229810.58	3175905.69
9900.00	89.74	269.350	7888.35	194.43S	2394.35W	==>	2400.56	1229809.45	3175805.70
10000.00	89.74	269.350	7888.81	195.57S	2494.34W	==>	2500.50	1229808.31	3175705.72
10100.00	89.74	269.350	7889.27	196.70S	2594.33W	==>	2600.45	1229807.17	3175605.73
10200.00	89.74	269.350	7889.73	197.84S	2694.32W	==>	2700.40	1229806.03	3175505.74
10300.00	89.74	269.350	7890.18	198.98S	2794.32W	==>	2800.34	1229804.90	3175405.75
10400.00	89.74	269.350	7890.64	200.11S	2894.31W	==>	2900.29	1229803.76	3175305.76
10500.00	89.74	269.350	7891.10	201.25S	2994.30W	==>	3000.24	1229802.62	3175205.77
10600.00	89.74	269.350	7891.55	202.39S	3094.29W	==>	3100.18	1229801.48	3175105.78
10700.00	89.74	269.350	7892.01	203.53S	3194.29W	==>	3200.13	1229800.35	3175005.79
10800.00	89.74	269.350	7892.47	204.66S	3294.28W	==>	3300.08	1229799.21	3174905.80
10900.00	89.74	269.350	7892.92	205.80S	3394.27W	==>	3400.02	1229798.07	3174805.81
11000.00	89.74	269.350	7893.38	206.94S	3494.26W	==>	3499.97	1229796.94	3174705.82
11100.00	89.74	269.350	7893.84	208.08S	3594.26W	==>	3599.92	1229795.80	3174605.83
11200.00	89.74	269.350	7894.29	209.21S	3694.25W	==>	3699.86	1229794.66	3174505.84
11300.00	89.74	269.350	7894.75	210.35S	3794.24W	==>	3799.81	1229793.52	3174405.86
11400.00	89.74	269.350	7895.21	211.49S	3894.23W	==>	3899.76	1229792.39	3174305.87
11500.00	89.74	269.350	7895.66	212.62S	3994.23W	==>	3999.70	1229791.25	3174205.88
11600.00	89.74	269.350	7896.12	213.76S	4094.22W	==>	4099.65	1229790.11	3174105.89
11700.00	89.74	269.350	7896.58	214.90S	4194.21W	==>	4199.60	1229788.98	3174005.90
11800.00	89.74	269.350	7897.03	216.04S	4294.20W	==>	4299.54	1229787.84	3173905.91
11900.00	89.74	269.350	7897.49	217.17S	4394.20W	==>	4399.49	1229786.70	3173805.92
12000.00	89.74	269.350	7897.95	218.31S	4494.19W	==>	4499.44	1229785.56	3173705.93
12100.00	89.74	269.350	7898.40	219.45S	4594.18W	==>	4599.38	1229784.43	3173605.94
12200.00	89.74	269.350	7898.86	220.58S	4694.17W	==>	4699.33	1229783.29	3173505.95
12300.00	89.74	269.350	7899.32	221.72S	4794.17W	==>	4799.28	1229782.15	3173405.96
12400.00	89.74	269.350	7899.77	222.86S	4894.16W	==>	4899.22	1229781.02	3173305.97
12500.00	89.74	269.350	7900.23	224.00S	4994.15W	==>	4999.17	1229779.88	3173205.98
12600.00	89.74	269.350	7900.69	225.13S	5094.14W	==>	5099.12	1229778.74	3173106.00
12667.81	89.74	269.350	7901.00	225.90S	5161.95W	==>	5166.89	1229777.97	3173038.19

All data is in Feet unless otherwise stated
Coordinates are from Slot MD's are from Rig and TVD's are from Rig (Planned Datum #1 5137.0ft above Mean Sea Level)
Vertical Section is from 0.00N 0.00E on azimuth 267.490 degrees
Bottom hole distance is 5166.89 Feet on azimuth 267.49 degrees from Wellhead
Calculation method uses Minimum Curvature method
Prepared by Integrated Petroleum Technologies, Inc.
Date Printed: 15-Oct-2014



WARD PETROLEUM

INTEGRATED PETROLEUM TECHNOLOGIES, INC
SYSDRILL
Well Design Combined Report
Wellbore: Riverdale 15-2-9HC (PWB)



Hole Sections								
Diameter [in]	Start MD[ft]	Start TVD[ft]	Start North[ft]	Start East[ft]	End MD[ft]	End TVD[ft]	End North[ft]	End East[ft]
13 1/2	25.00	25.00	0.00N	0.00E	1200.00	1200.00	0.00N	0.00E
8 3/4	1200.00	1200.00	0.00N	0.00E	8289.00	7881.00	176.11S	783.47W
6 1/8	8289.00	7881.00	176.11S	783.47W	12667.83		225.91S	5161.97W

Casings								
Name	Top MD[ft]	Top TVD[ft]	Top North[ft]	Top East[ft]	Shoe MD[ft]	Shoe TVD[ft]	Shoe North[ft]	Shoe East[ft]
9 5/8in Surface Casing	25.00	25.00	0.00N	0.00E	1200.00	1200.00	0.00N	0.00E
7.0in Intermediate Casing	25.00	25.00	0.00N	0.00E	8289.00	7881.00	176.11S	783.47W
4 1/2in Production Liner	8089.00	7852.33	173.15S	586.21W	12667.83		225.91S	5161.97W

Targets								
Name	North[ft]	East[ft]	TVD[ft]	Latitude	Longitude	Northing	Easting	Last Revised
Ward Riverdale 15-2-9HC BH	225.90S	5161.95W	7901.00	39.96247000	-104.88268000	1229777.97	3173038.19	30-Sep-2014
Ward Riverdale 15-2-9HC LP	184.11S	783.59W	7881.00	39.96250000	-104.86706000	1229819.76	3177416.41	30-Sep-2014

Survey Tool Program						
Reference	Survey Name	MD[ft]	TVD[ft]	Survey Tool	Error Model	
305088	Planned	12667.81	7901.00	WdW Rate Gyro	Standard	

Notes

All data is in Feet unless otherwise stated
Coordinates are from Slot MD's are from Rig and TVD's are from Rig (Planned Datum #1 5137.0ft above Mean Sea Level)
Vertical Section is from 0.00N 0.00E on azimuth 267.490 degrees
Bottom hole distance is 5166.89 Feet on azimuth 267.49 degrees from Wellhead
Calculation method uses Minimum Curvature method
Prepared by Integrated Petroleum Technologies, Inc.
Date Printed: 15-Oct-2014



WARD PETROLEUM

SYSDRILL
Closest Approach + Clearance Factor Summary Report
Wellbore: Riverdale 15-2-9HC (PWB)



Ellipse separations are reported ONLY if BOTH wells have uncertainty data
Only Depth and Magnetic Reference Field error terms are correlated across tie points
Proximities beyond 2500.00ft with expansion rate of 0.00ft/1000ft are not reported
Scan limit is calculated on CENTRE to CENTRE distance

Summary data uses Closest Approach clearance calculation for all minima
Hole size/Casings ARE included
Hole size/Casings are NOT subtracted from Centre-Centre distance
Confidence limit of 95.00% / 2.80 SD.

Wellbore		
Name	Created	Last Revised
Riverdale 15-2-9HC (PWB)	30-Sep-2014	2-Oct-2014

Well		
Name	Government ID	Last Revised
Riverdale 15-2-9HC		1-Oct-2014

Slot						
Name	Grid Northing	Grid Easting	Latitude	Longitude	North	East
Slot #14	1230003.8676	3178199.9726	39.96299000	-104.86426000	51.06S	8.04W

Installation				
Name	Easting	Northing	Coord System Name	North Alignment
Riverdale	3178208.0159	1230054.9248	CO83-NF on NORTH AMERICAN DATUM 1983 datum	Grid

Field				
Name	Easting	Northing	Coord System Name	North Alignment
West Brighton	3178196.4983	1231661.3262	CO83-NF on NORTH AMERICAN DATUM 1983 datum	Grid

Clearance Summary								
Offset Wellbore	Offset Structure	Separation [ft]	MD[ft]	Diverging From[ft]	Ellipse Separation [ft]	Ellipse MD[ft]	Clearance Factor	Clearance MD[ft]
Riverdale 14-4-9HN (PWB)	Riverdale	4.75	1558.01	7618.65	1.62	1558.01	1.51	7618.65
Riverdale 14-4-8HC (PWB)	Riverdale	11.00	1320.93	7784.28	8.26	1337.34	3.92	1189.70
Riverdale 15-2-10HN (PWB)	Riverdale	14.02	1391.94	12667.81	11.16	1391.94	4.85	1425.00
Riverdale 15-2-8HN (PWB)	Riverdale	14.57	1275.42	8284.42	11.73	1189.70	5.13	1189.70
Riverdale 14-4-10HC (PWB)	Riverdale	20.69	1566.99	7809.83	17.55	1566.99	6.51	1616.21
Riverdale 14-4-7HN (PWB)	Riverdale	23.42	1250.10	7598.89	20.58	1189.70	8.25	1189.70
Riverdale 15-2-7HC (PWB)	Riverdale	29.14	1250.37	1250.37	26.30	1189.70	9.27	12667.81
Riverdale 15-2-11HC (PWB)	Riverdale	32.79	1298.41	12667.81	29.94	1189.70	9.42	12667.81
Riverdale 14-4-6HC (PWB)	Riverdale	37.39	1225.36	7770.39	34.55	1189.70	13.16	1189.70
Riverdale 14-4-11HN (PWB)	Riverdale	40.86	1399.25	7655.92	37.99	1399.25	13.95	1468.57
Riverdale 15-2-6HN (PWB)	Riverdale	43.71	1225.37	1225.37	40.87	1189.70	14.19	12667.81

All data is in Feet unless otherwise stated
Coordinates are from Slot MD's are from Rig and TVD's are from Rig (Planned Datum #1 5137.0ft above Mean Sea Level)
Vertical Section is from 0.00N 0.00E on azimuth 267.490 degrees
Prepared by Integrated Petroleum Technologies, Inc.
Date Printed: 15-Oct-2014



WARD PETROLEUM

SYSDRILL
Closest Approach + Clearance Factor Summary Report
Wellbore: Riverdale 15-2-9HC (PWB)



Offset Wellbore	Offset Structure	Separation [ft]	MD[ft]	Diverging From[ft]	Ellipse Separation [ft]	Ellipse MD[ft]	Clearance Factor	Clearance MD[ft]
Riverdale 15-2-12HN (PWB)	Riverdale	47.36	1248.35	12667.81	44.52	1189.70	14.41	12667.81
Riverdale 14-4-5HN (PWB)	Riverdale	51.69	1189.70	1189.70	48.85	1189.70	18.21	1189.70
Riverdale 14-4-12HC (PWB)	Riverdale	55.29	1247.93	7846.19	52.44	1189.70	19.45	1189.70
Riverdale 15-2-5HC (PWB)	Riverdale	58.29	1200.47	1200.47	55.45	1189.70	18.55	12667.81
Riverdale 22-2-1HC (PWB)	Riverdale	61.93	1197.55	12667.81	59.07	1197.55	18.76	12667.81
Riverdale 23-4-1HN (PWB)	Riverdale	69.72	1197.53	7711.81	66.87	1197.53	24.43	1197.53
W United Bank of Denver 1 (AWB)	Offsets	76.01	5239.89	5239.89	54.70	5239.89	3.57	5239.89
W Ehler, John 15 (AWB)	Offsets	941.87	5130.02	5130.02	920.80	5130.02	44.70	5143.11
W Adams County 1 (AWB)	Offsets	1189.26	5281.34	5281.34	1168.12	5281.34	56.23	5307.15
W United Bank of Denver 3 (AWB)	Offsets	1358.96	1304.53	1304.53	1349.48	1320.93	67.98	5241.54
W RC Nauman 2 (AWB)	Offsets	1429.01	1300.00	1300.00	1419.45	1304.53	72.29	5339.96
W Ehler, John 20 (AWB)	Offsets	1533.48	5294.69	5294.69	1512.33	5294.69	72.44	5339.96
W Ehler, John 18 (AWB)	Offsets	1723.40	1304.53	1304.53	1713.69	1320.93	84.21	5274.34
W Nauman 1-14 (AWB)	Offsets	1874.18	1300.00	1300.00	1862.40	1320.93	65.51	7472.51
W United Bank of Denver 2 (AWB)	Offsets	2063.72	5262.62	5262.62	2042.72	5262.62	98.06	5372.77
W RC Nauman 4 (AWB)	Offsets	2123.84	1304.53	1304.53	2114.23	1320.93	105.81	5290.75
W Ehler, John 22 (AWB)	Offsets	2253.58	5216.38	5216.38	2232.36	5216.38	105.95	5339.96
W Renslow 1 (AWB)	Offsets	2491.34	5314.48	5314.48	2470.30	5314.48	118.11	5454.79