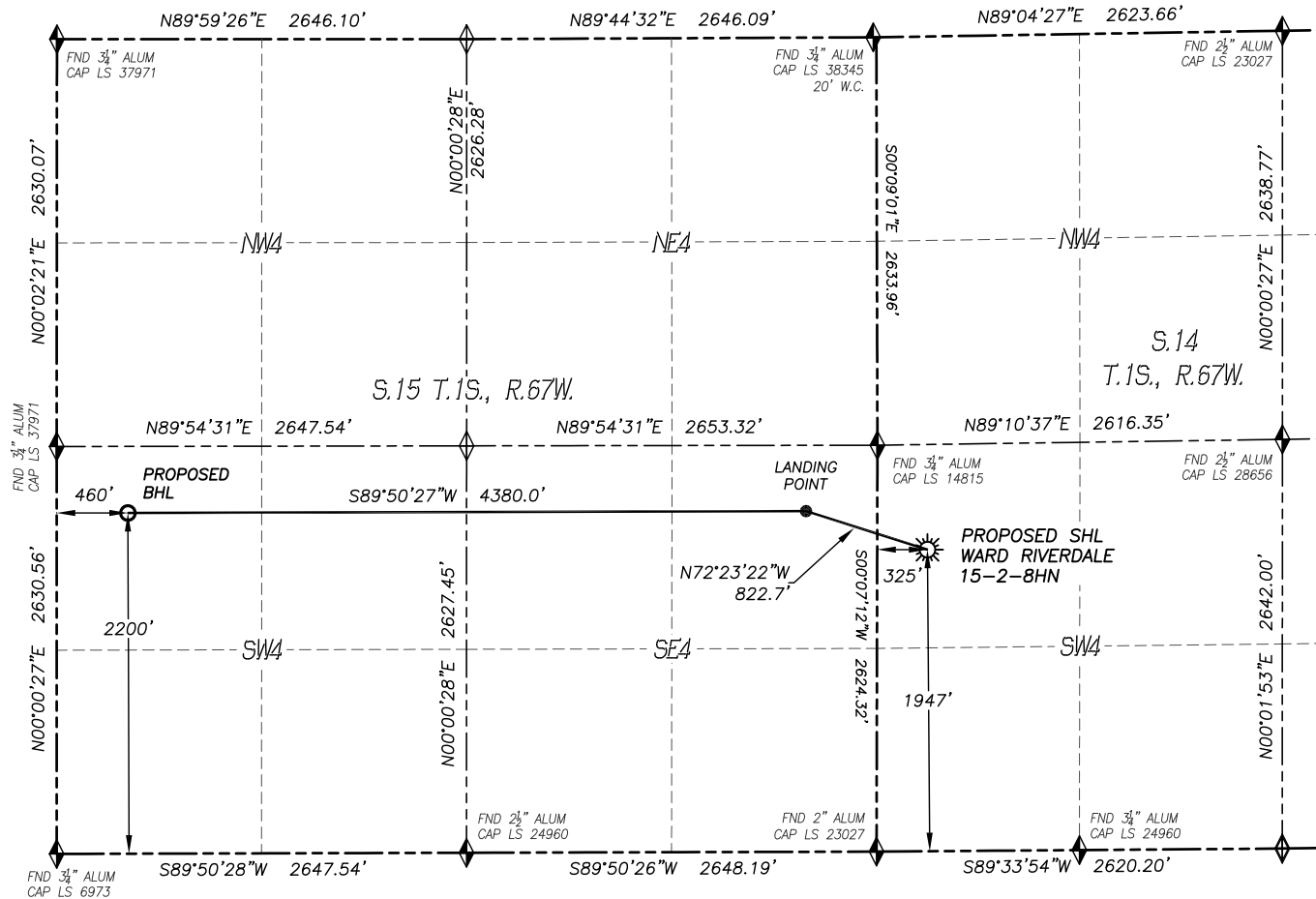


DALEY LAND SURVEYING, INC. PARKER, CO. 80134 303 953 9841
WELL LOCATION CERTIFICATE – WARD RIVERDALE 15-2-8HN
 SECTION 14, TOWNSHIP 1 SOUTH, RANGE 67 WEST OF THE 6TH PRINCIPAL MERIDIAN



NAD 83 LATITUDE AND LONGITUDE

SURFACE LOCATION:

LATITUDE: N39.96303°
 LONGITUDE: W104.86426°
 ELEVATION: 5112'
 FOOTAGE: 1947' FSL, 325' FWL
 QTR/QTR: NW4/SW4
 PDOP: 1.6

LANDING POINT:

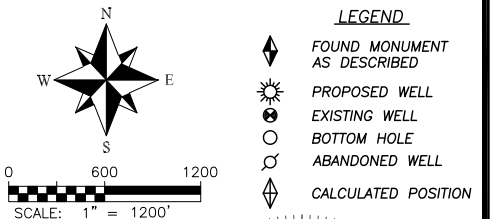
LATITUDE: N39.96371°
 LONGITUDE: W104.86706°
 FOOTAGE: 2200' FSL, 460' FEL
 OF SEC.15-T1S-R67W

BOTTOM HOLE:

LATITUDE: N39.96367°
 LONGITUDE: W104.88268°
 FOOTAGE: 2200' FSL, 460' FWL
 OF SEC.15-T1S-R67W

NEAREST CULTURAL ITEMS:

- | | |
|--------------------------------|----------|
| 1. BUILDING: | 420'± NE |
| 2. BUILDING UNIT: | 567'± W |
| 3. HIGH OCC. BLD. UNIT: | 5280'± |
| 4. DES. OUTSIDE ACTIVITY AREA: | 5280'± |
| 5. PUBLIC ROAD: | 658'± NW |
| 6. ABOVE GROUND UTILITY: | 306'± W |
| 7. RAILROAD: | 5280'± |
| 8. PROPERTY LINE: | 325'± W |

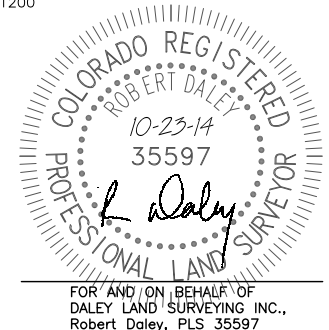


IN ACCORDANCE WITH A REQUEST FROM WARD PETROLEUM., DALEY LAND SURVEYING, INC. HAS DETERMINED THE SURFACE LOCATION OF THE WARD RIVERDALE 15-2-8HN WELL TO BE 1947' FSL, 325' FWL, AS MEASURED AT NINETY (90) DEGREES FROM THE SECTION LINES OF SECTION 14, TOWNSHIP 1 SOUTH, RANGE 67 WEST, AND THE BOTTOM HOLE LOCATION TO BE 2200' FSL, 460' FWL, AS MEASURED AT NINETY (90) DEGREES FROM THE SECTION LINES OF SECTION 15, TOWNSHIP 1 SOUTH, RANGE 67 WEST, OF THE 6TH PRINCIPAL MERIDIAN, ADAMS COUNTY, COLORADO.

I HEREBY STATE THAT THIS WELL LOCATION CERTIFICATE WAS PREPARED BY ME OR UNDER MY DIRECT SUPERVISION, THAT THE WORK WAS COMPLETED ON 10/2/2014 FOR AND ON BEHALF OF WARD PETROLEUM, AND THAT THIS MAP DOES NOT REPRESENT A BOUNDARY SURVEY, IT IS NOT A LAND SURVEY PLAT OR AN IMPROVEMENT SURVEY PLAT AND IT IS NOT TO BE RELIED UPON FOR THE ESTABLISHMENT OF FENCE, BUILDING OR OTHER FUTURE IMPROVEMENT LINES.

NOTES:

- BEARINGS FOR THIS MAP ARE ASSUMED AND BASED UPON GPS OBSERVATIONS MADE BETWEEN MONUMENTS LOCATED AT THE SOUTHWEST CORNER AND WEST QUARTER CORNER OF SECTION 14, T.1S., R.67W.
- HORIZONTAL DATUM IS NAD83.
- VERTICAL DATUM IS NAVD88 AND ORIGINATES FROM THE LOCAL C.O.R.S. NETWORK, UTILIZING THE GEOID09 MODEL.
- SEE LOCATION DRAWING FOR VISIBLE IMPROVEMENTS WITHIN 500' OF PROPOSED DISTURBED AREA.
- SURFACE USE: NON AGRICULTURAL.
- INST. OPERATOR: TREVOR DALEY



FOR AND ON BEHALF OF
 DALEY LAND SURVEYING INC.,
 Robert Daley, PLS 35597